



深圳市联笙科技有限公司

ShengZhen LianSheng Technology Co.,Ltd.

规格承认书

SPECIFICATION FOR APPROVAL

日期 Date 2018/08/16

编号 File No SA000605

版本 Revision 1.0

客户

CUSTOMER:

慧为

客户料号

CUSTOMER NO:

品名

主 WIFI Antenna L总=430MM

供方料号

LSF.A833.S081.04

送样日期 Date:

送样数量 Q"TY:

PCS

客户确认 CUSTOMER APPROVED BY

APPROVAL

CHIEF

SUPERVISOR

供方确认 SUPPLIER SIGNATURE

APPROVAL

CHECK

DESIGN

ChenGuoqiang

WenXue

ChenXingcheng

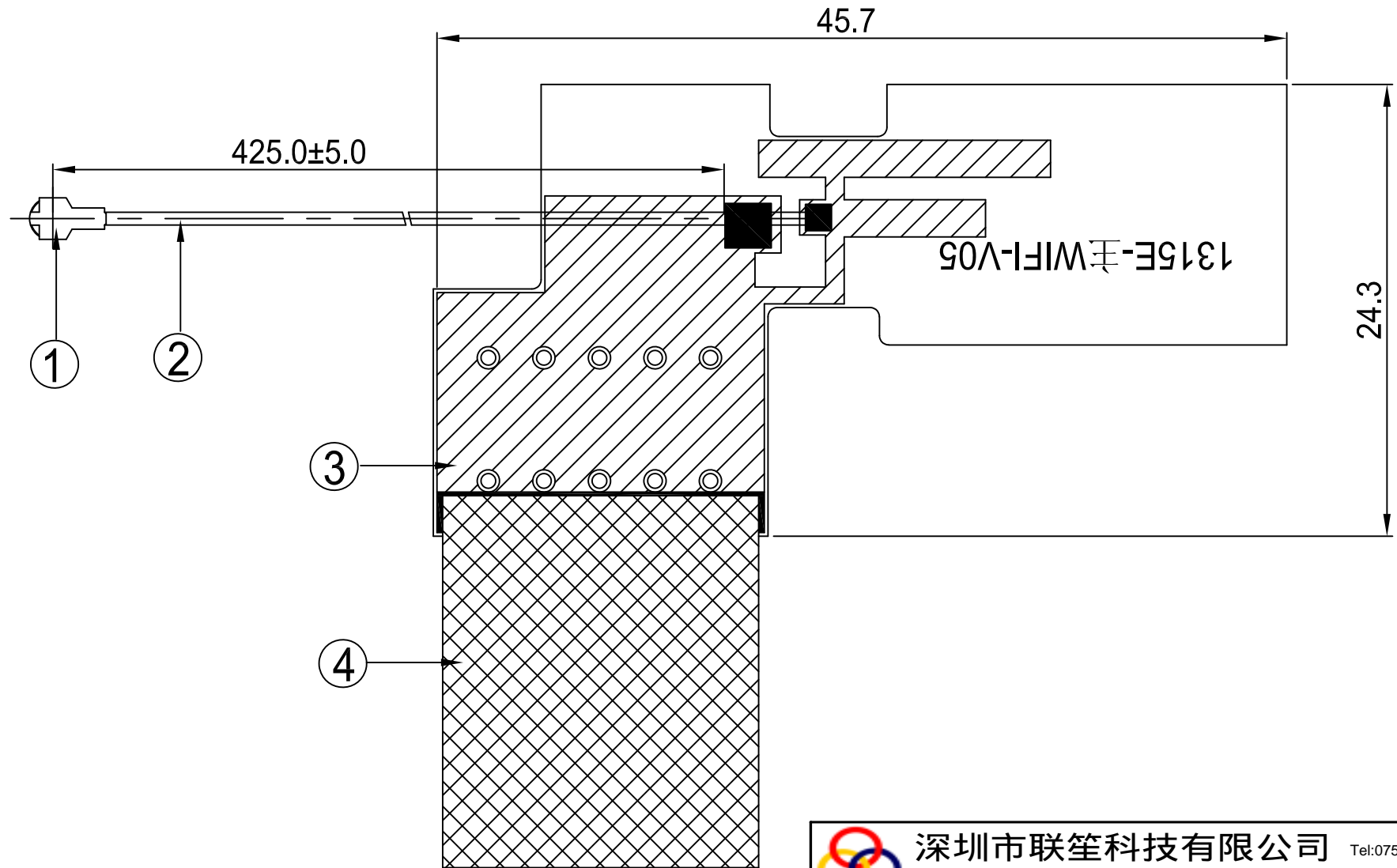
承认书项目表

NO	内容 (Contents)	页数 (Number of Page)	页码 (Page Code)
1	承认书封面 (Spec Cover)	1	1
2	承认书项目表 (Spec Item)	1	2
3	工程成品图 (Drawing)	1	3
4	天线规格 (Antenna Specification)	1	4
5	S参数测试 (S Parameter)	1	5
6	无源测试 (Passive Test)	3	6 ~ 8
7	天线装配图 (Antenna Profile)	2	9 ~ 10
8	N/A	N/A	N/A
9	-	-	-
10	-	-	-
11	-	-	-
12	-	-	-
13	-	-	-

RoHS
Compatible

CUSTOMER	
PART NO	1315E

REV.	DESCRIPTION	DATE
△	首次发行	2018.08.16



4	Conductive Fabric	17.0*20.0MM	Fabric	FAB100XXA.P01	1
3	FPCB	45.7*24.3MM	FPCB	FPC100XXA.P01	1
2	Coaxial Cable	O.D.0.81 Gray	O.D.0.81	COA100XXA.P01	1
1	Mini Connector	Au Plated 4代	Cu	TER10004A.P01	1
NO	PART NAME	DESCRIPTION	Material	Part Number	Q.TY


深圳市联笙科技有限公司 Tel:0755-82885545
 ShengZhen LianSheng Technology Co.,Ltd. MP:13823198410

PART NAME: 主WIFI Antenna L=425mm MHF
 PART NO.: LSF.A833.S081.04 DATE: 2018-08-16

APPROVED BY	CHECKED BY	DESIGNED BY	 Tolerance X.X ±0.50 X.XX±0.15 X° ±3°
陈国强	文雪	汪婷	
UNITS: mm SCALE: 1/1 REVISION: A			

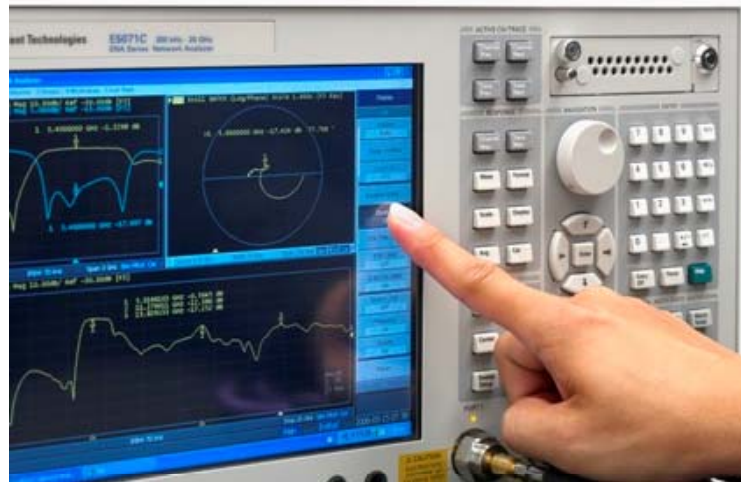
天线规格

Antenna Specification

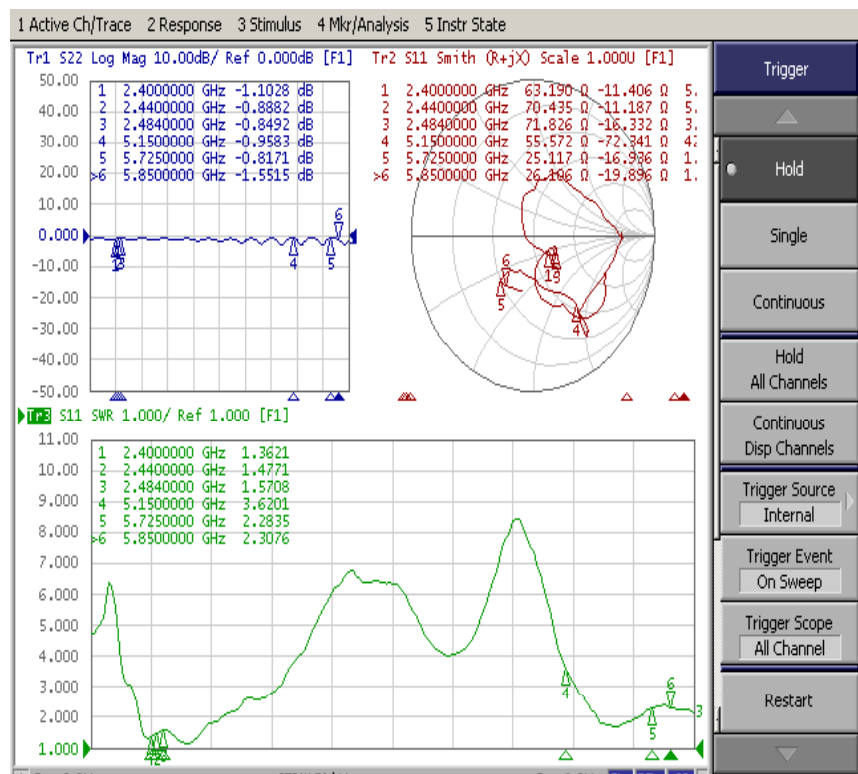
Electrical Properties	
Frequency	2.4-2.5GHz 5.15-5.85GHz
Impedance	50 Ohm Nominal
V.S.W.R	See Page 5
Return Loss	See Page 5
Radiation	Omni-directional
Gain (Peak)	See Page 7 ~ 8
Polarization	Linear
Connector	4代IPEX
Physical Properties	
Antenna Material	FPC
Cable Type	O.D.0.81mm//L=425mm
Operating Temp.	-10 ~ +60 °C
Storage Temp.	-10 ~ +70 °C
Cable Color	Gray

Antenna Performance Test

**Agilent
E5071B**



**S
Parameter
Test //
WIFI ±**

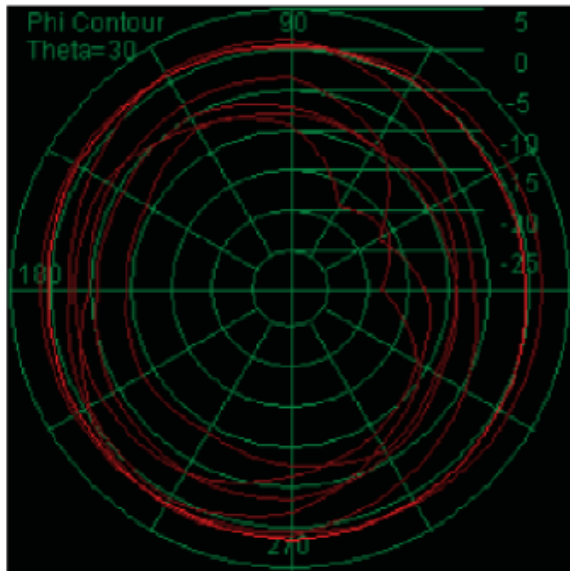


Antenna Passive Test

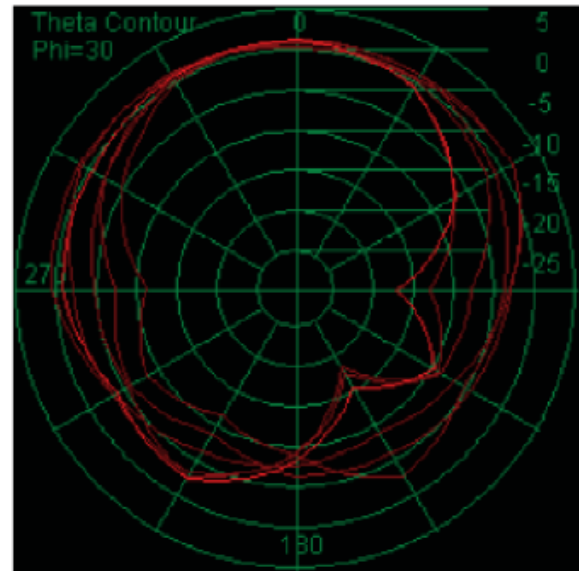


2.4G Patten

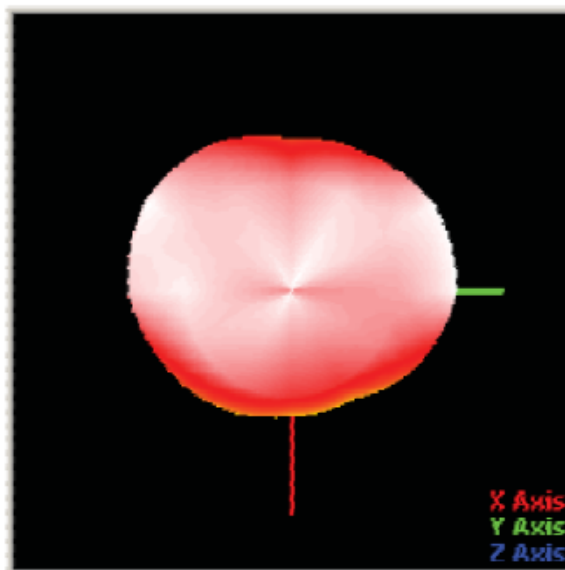
XZ Plane



YZ Plane

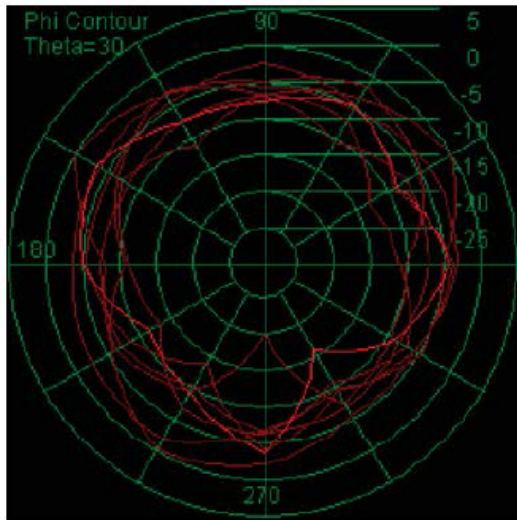


3D

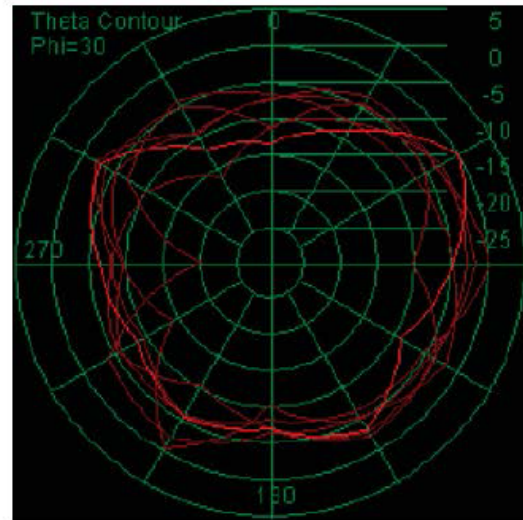


5G Patten

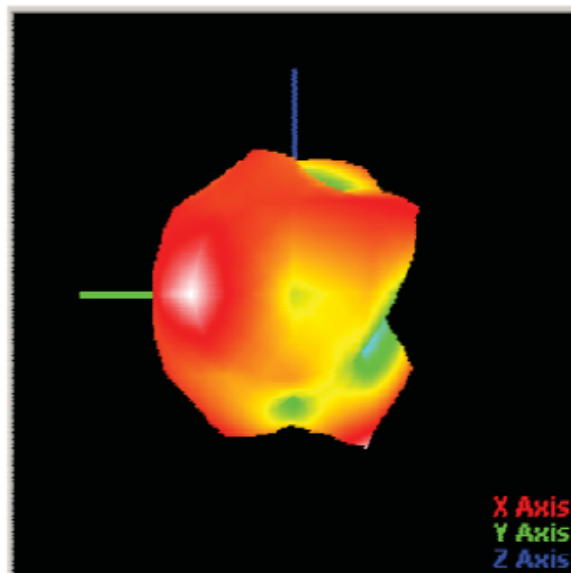
XZ Plane



YZ Plane



3D



Passive Test For WiFi(2.4G)-主

Freq (MHz)	Effi (%)	Effi (dB)	Gain (dBi)
2400	33.4	-4.8	1.2
2410	33.9	-4.7	1.4
2420	34.0	-4.7	1.1
2430	34.0	-4.7	0.8
2440	33.8	-4.7	0.4
2450	34.0	-4.7	0.1
2460	33.0	-4.8	-0.4
2470	31.5	-5.0	-0.5
2480	30.1	-5.2	-0.6
2490	29.5	-5.3	-0.6
2500	28.6	-5.4	-0.6

Passive Test For WiFi(5.8G)-主

Freq (MHz)	Effi (%)	Effi (dB)	Gain (dBi)
5150	25.2	-6.0	2.0
5200	21.5	-6.7	1.1
5250	19.1	-7.2	2.0
5300	20.0	-7.0	2.3
5350	20.8	-6.8	1.8
5400	21.2	-6.7	2.2
5450	22.9	-6.4	1.3
5500	21.0	-6.8	1.4
5550	27.2	-5.7	2.9
5600	25.4	-5.9	1.7
5650	24.6	-6.1	1.1
5700	23.7	-6.3	1.4
5750	24.1	-6.2	1.6
5800	24.7	-6.1	1.5
5850	25.2	-6.0	2.2

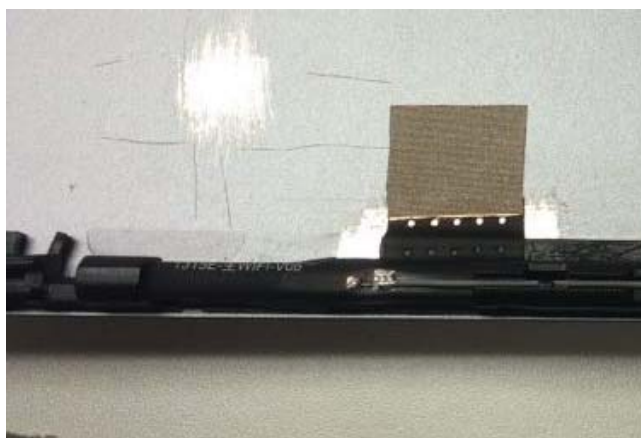
Antenna Profile

Device

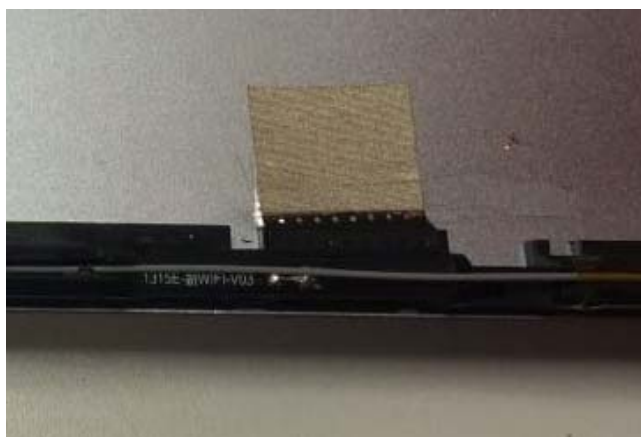


Antenna

WIFI
主



WIFI
副



Assembly Drawing

