



**User Manual**  
**LINCPLUS P1**

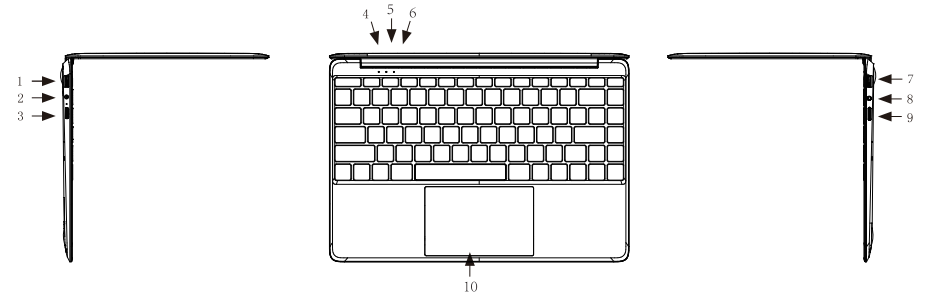
## Product Features

- OS Windows RS4
- 13.3" IPS screen
- Dual core
- DDR4 4GB, eMMC 32GB
- Bluetooth 4.2
- Camera front 0.3MP
- Wi-Fi 2.4G + 5 G
- Support USB host
- Micro SD
- speakers
- SSD expanding support

## Cautions


- Be careful of using, display can be damaged if it undergo external shocks or pressure.
- In case of external damage or transformation, customer needs to pay repairing charge even though in warranty period.
- Do not give excessive shock to equipment or drop it.
  - Be careful of long time using with high volume. It can occur hearing damage.
  - Do not discretionally disassemble equipment as you can't receive free warranty service.
  - Equipment can be damaged excessively or loss date if the equipment cable is disconnected or powered off during firmware update and file uploading or downloading.
  - Do not use in cold, wet and dusty place. It may occurs external transformation or screen condensation, and malfunction.
  - We don't take responsibility for data loss stored in equipment. Please use equipment after back important file up.
  - Please avoid using in dusty environments as dust may goes into inside of equipment or screen.

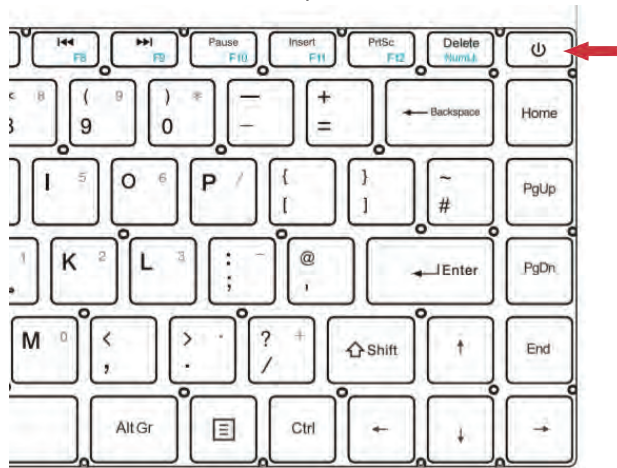
## Name of Parts



FEATURE	FUNCTIONALITY
1. USB port	Connect USB devices
2. DC-In socket	Connect the supplied power adapter to charge the battery
3. Micro HDMI port	Connect HD television via optional Micro HDMI cable and switch the display to a wider screen (Not Included)
4. Power light / Charging Indicator	Indicates the battery-charge status
5. Caps Lock Indicator	Indicates when all letters are capitalised
6. Close Touchpad Indicator	Closing the touch board function
7. USB port	Connect USB devices
8. Audio port	Connect a headset, headphones, microphone, or other audio equipment, to listen to stereo sound, record audio, or make web phone calls
9. SD card slot	Reads and writes files stored on a MicroSD Card
10. Precision Touchpad	Functions like a computer mouse

## Turn on PC

1. Press Power button  on the keyboard to turn on the PC



## Turn off PC

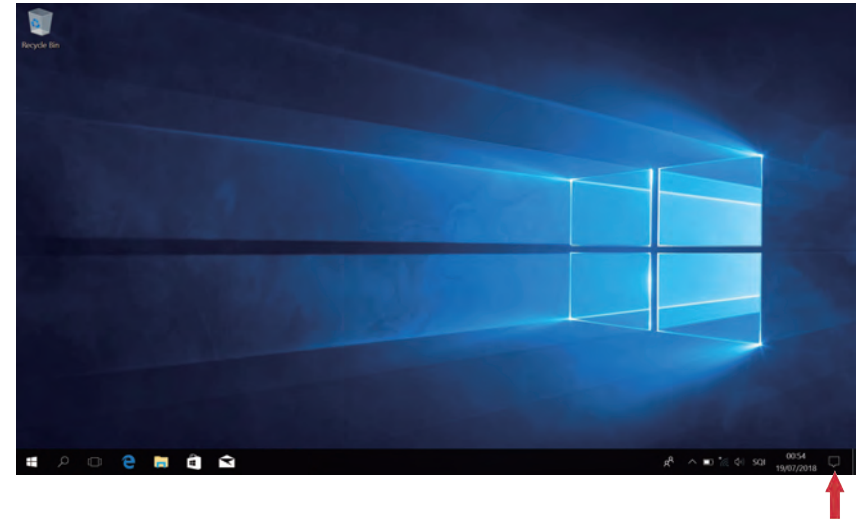
1. Click the Windows icon , 2. Power icon , 3. "Shut down" on the bottom left corner of the screen.



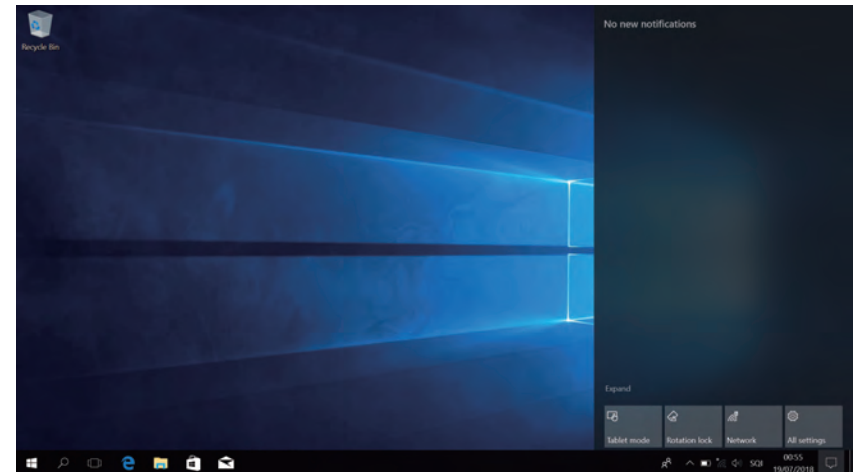
## Understanding the Screen

### Charm menu

1. Click the Charm menu icon  on the bottom right corner of the screen, or push buttons "Windows Key  + A" on the keyboard.



2. "Tablet mode", "Rotation lock", "Setting", "Wi-Fi" and other functions comes up.

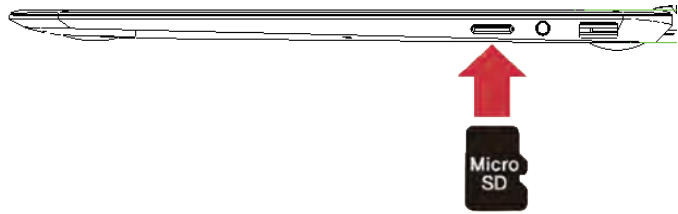


## Micro SD card slot

Micro SD is the removable drive and can move various data easily and expand capacity of PC

### Using Card

1. Insert the Micro SD card into Micro SD card slot



2. Message in top of right side

8G (D:)  
Choose what to do with removable drives.

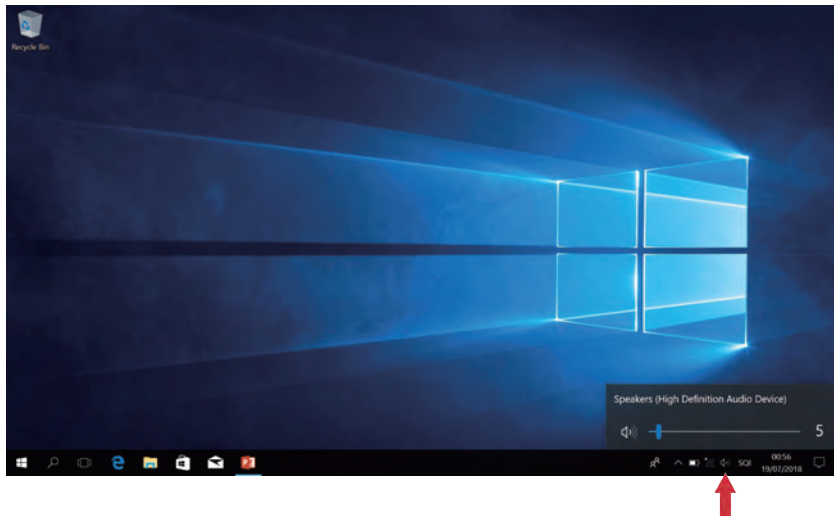
3. Click and touch 'Open folder to view files'
4. Now you can save, move and delete data on Micro SD card.
5. After finish use, press inserted Micro SD card and Micro SD card sticks out.

## Setting Volume

Volume setting is available by button and the volume icon on the bottom right corner of screen.

### Setting Volume by volume icon

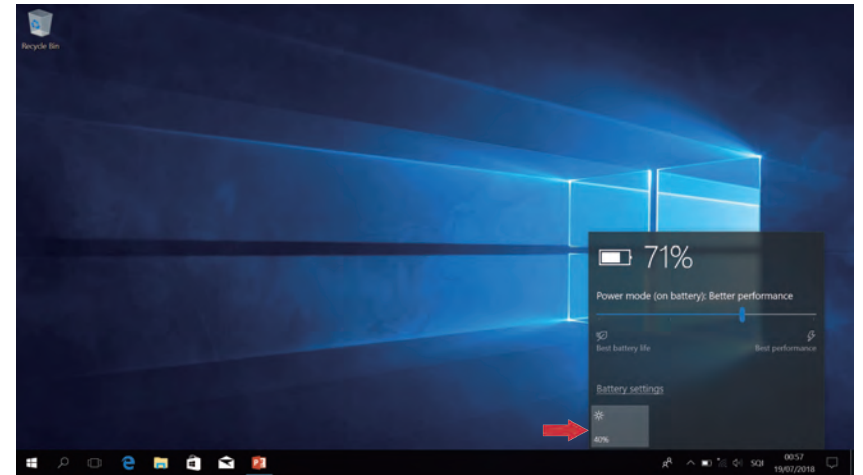
Click the volume icon on the bottom right corner of screen.



## Setting LCD brightness

※ The brightest setting when use adpoter, and dark setting when use battery to increase battery using time more longer

1. Open the Charm menu.
2. Set the screen brightness by clicking the Brightness icon.

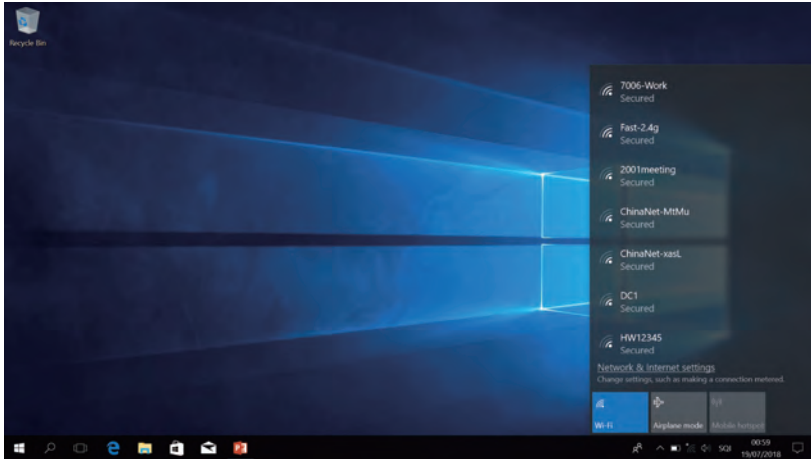


## Wireless Network (Wi-Fi)

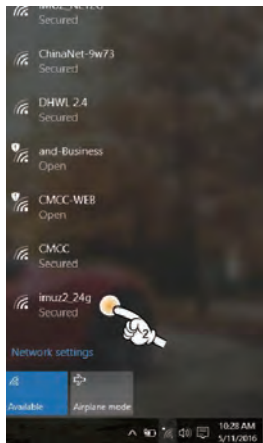
Can simply connect to wireless network if there are Wi-Fi nearby.

### Connecting wireless LAN

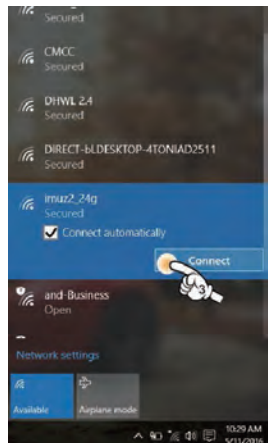
1. Click the Wi-Fi icon on the bottom right corner of screen. All available Wi-Fi list will be shown up.



2. Click the desired Wi-Fi on the list.



3. Click the connect icon.



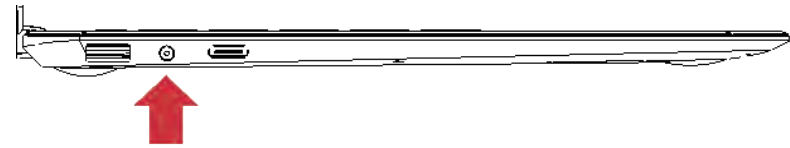
※ Network security key need to be checked by network manager

## Battery


If use PC with battery, not adopter, please refer to this description

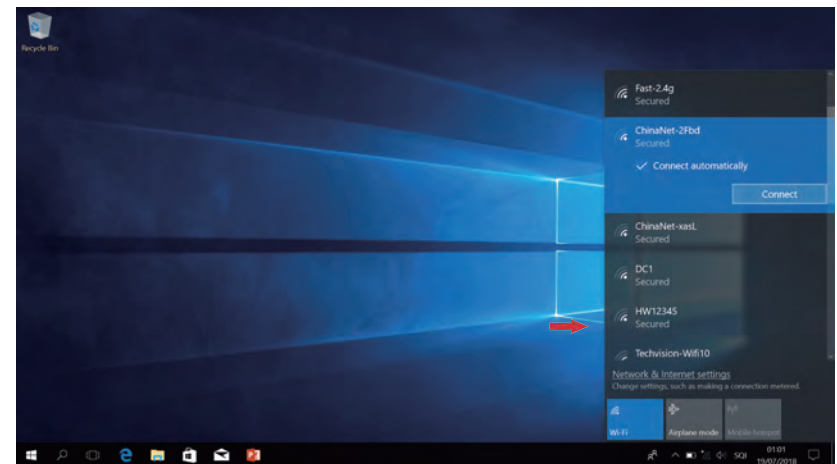
### How to charge the battery

Please plug charger in PC charging port

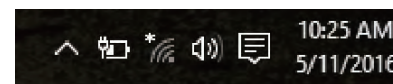


### How to check battery remains

1. After separate charger port from PC, move the battery icon  on the bottom right corner of screen.



2. Battery remain will show up on the battery icon.



### Battery use period information

As a consumable, battery use period is decreased if is used long time

If hour of battery use is decreased to half than the time of purchase, please change to new one

If battery is not in use for long periods of time, please keep it when remains 30-40%

Can extend the battery life if you keep it according to above

### Caution

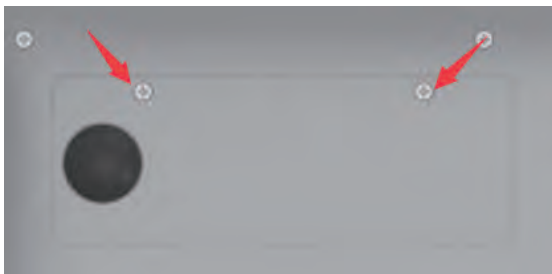
If don't change the battery correctly, there is a risk of explosion

Used batteries, please discard according to supplier's instruction

### SSD installation instructions


Note: You must shut down the machine before installing the SSD,And you should choose 2282 size SSD.

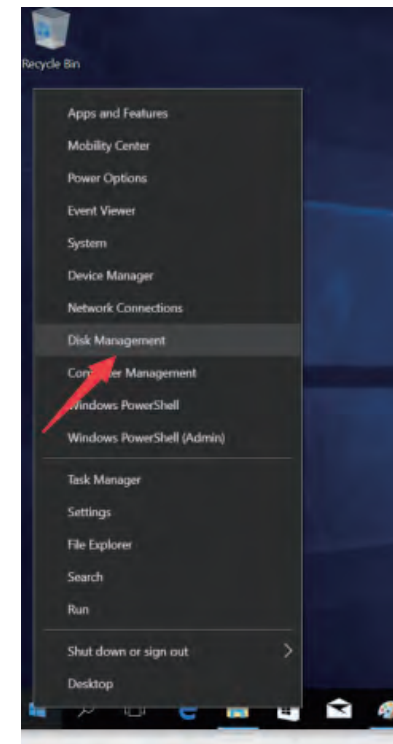
1.Twist the SSD cover screw and remove the cover (as picture shows)



2.Insert the SSD into the mini PCI-E interface, and then screw it to fix the SSD (as picture shows).

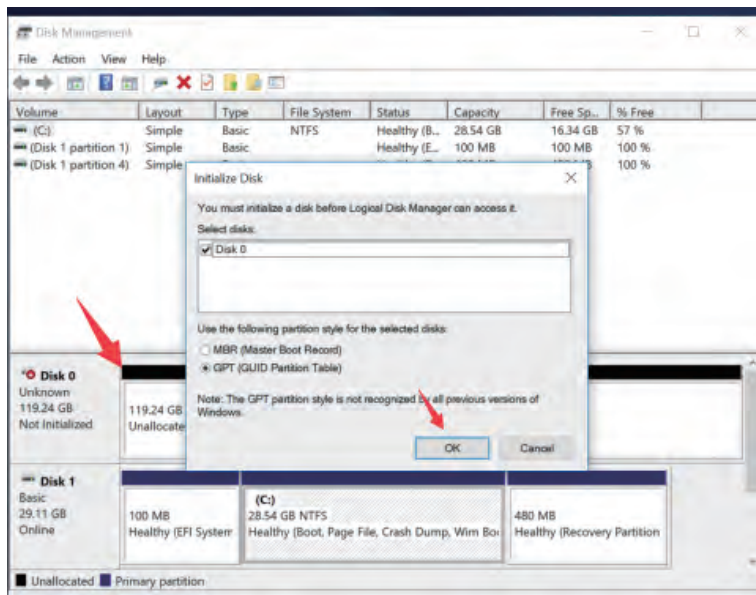


3.After assembly finished,Power on the laptop,Boot to System desktop,right click  Item, and Choose Disk Management(as picture shows) .

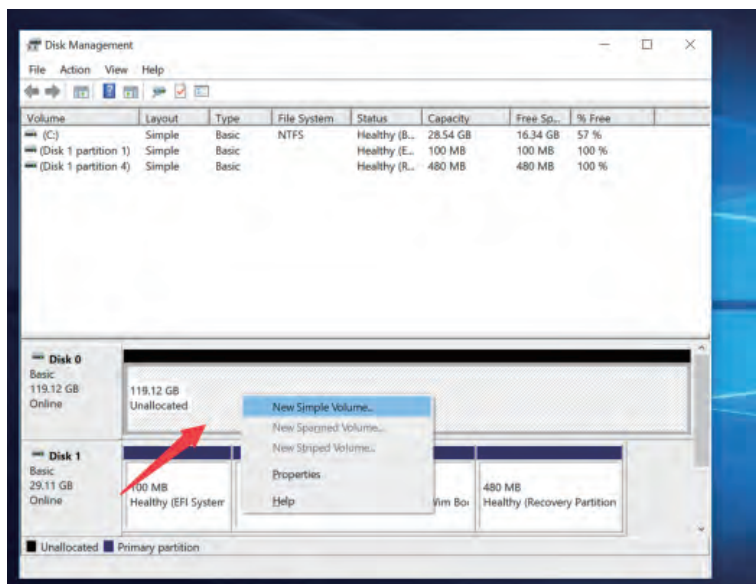


4.Right click the new disk(see below disk 0),pop-up Initialize Disk window,press "ok" to start partition disk.(as picture shows)

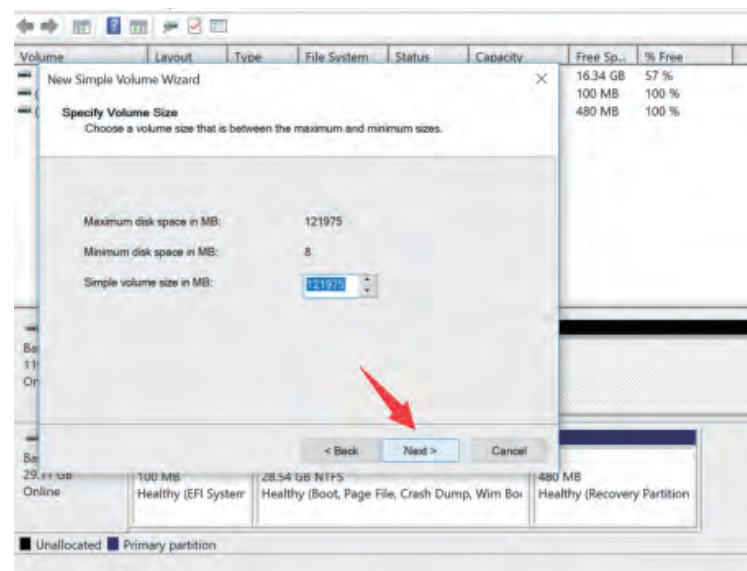
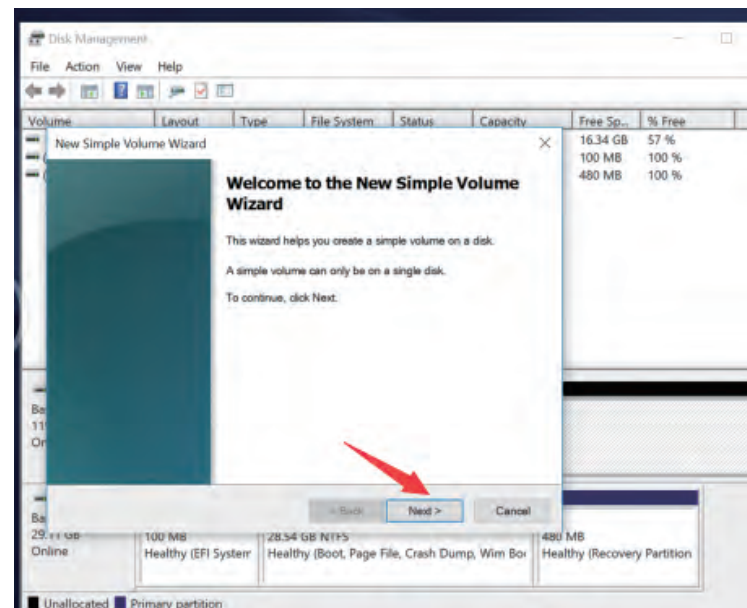


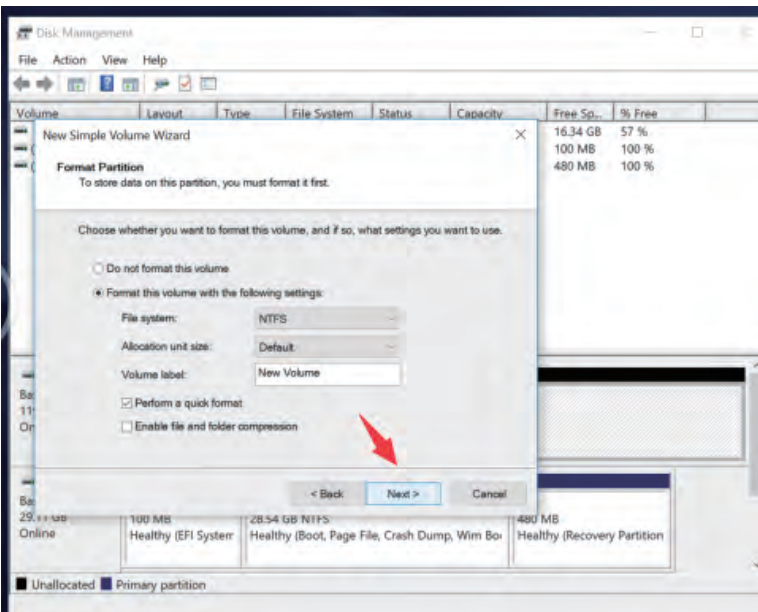
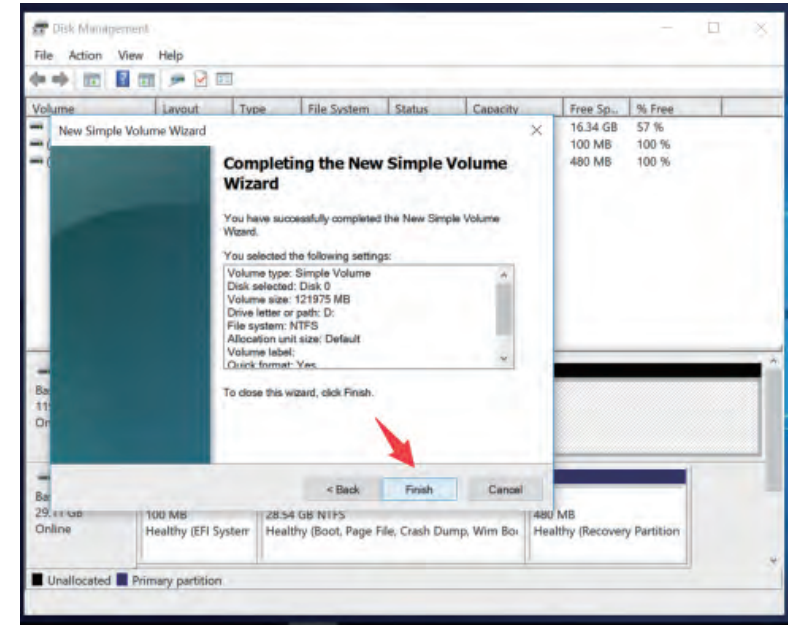
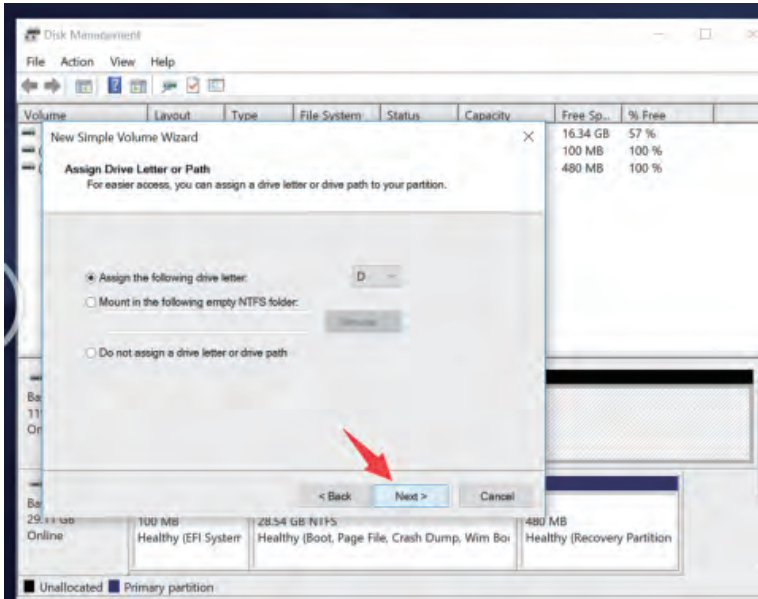


5. After finished, right click the "Disk 0", Choose New Simple Volume (as picture shows)

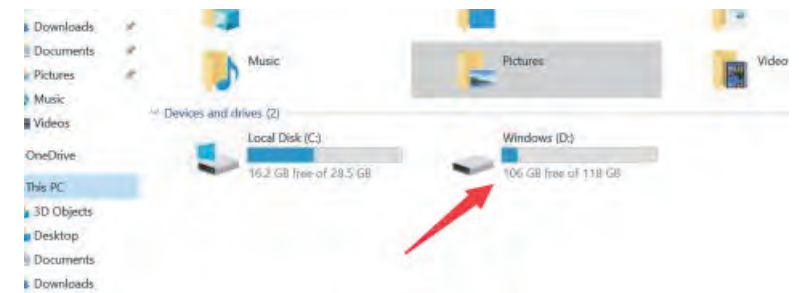


6. Keep Pressing "next" until you see "finish" (see below picture)





7.boot into the desktop, open my computer file, you will see a new removable disk (as picture shows)





This device complies with part 15 of the FCC Rules. Operation is subject to the condition that this device does not cause harmful interference (1) this device may not cause harmful interference, and (2) this device must accept any interference received, including interference that may cause undesired operation. Any changes or modifications not expressly approved by the party responsible for compliance could void the user's authority to operate the equipment. NOTE: This equipment has been tested and found to comply with the limits for a Class B digital device, pursuant to Part 15 of the FCC Rules. These limits are designed to provide reasonable protection against harmful interference in a residential installation. This equipment generates, uses and can radiate radio frequency energy and, if not installed and used in accordance with the instructions, may cause harmful interference to radio communications. However, there is no guarantee that interference will not occur in a particular installation. If this equipment does cause harmful interference to radio or television reception, which can be determined by turning the equipment off and on, the user is encouraged to try to correct the interference by one or more of the following measures:

- Reorient or relocate the receiving antenna.
- Increase the separation between the equipment and receiver.
- Connect the equipment into an outlet on a circuit different from that to which the receiver is connected.
- Consult the dealer or an experienced radio/TV technician for help. The device has been evaluated to meet general RF exposure requirement. The device can be used in portable exposure condition without restriction.

The FCC Statement of Exposure to RF and the SAR limit for the United States (FCC) is 1.6 W/kg average for each gram of tissue. This device was tested for typical operations of use on the body, with the back of the Notebook at 0mm from the body. To maintain compliance with FCC RF exposure requirements, use accessories that maintain a distance of 0mm between the user's body and the back of the Notebook.