

# USER MANUAL

PBX-412200



## PROFESSIONAL SPEAKER

PLEASE READ THIS USER MANUAL CAREFULLY BEFORE SYSTEM CONNECT

## IMPORTANT SAFETY MEASURES

Before using this machine, please read all the safety and operating instructions. meanwhile, please observe all the indications about safe operating. These safety and operating instructions should be kept in condition of consultation.

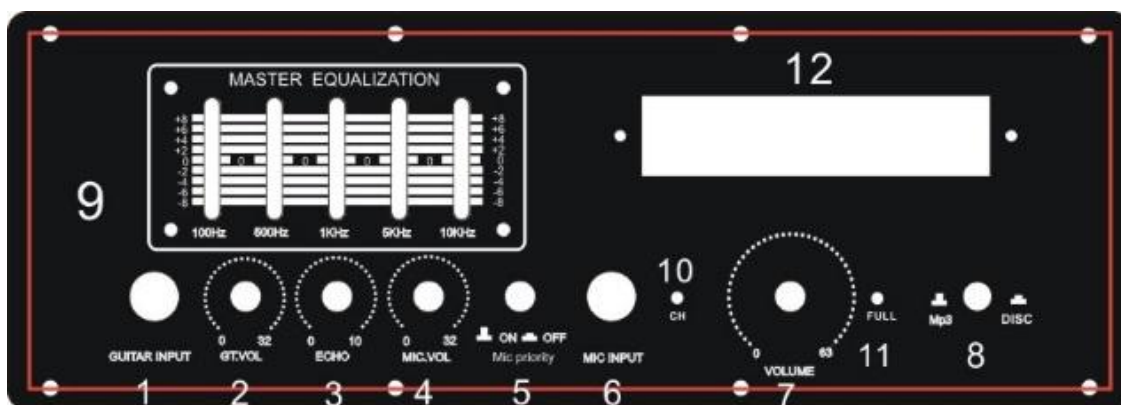


1. Protection of electric power supply line: Be aware that the electric power supply line is not Tramped, pressed by heavy objects Pay special attention to the plug of power supply line and outlet on the machine. DO NOT lengthen the electric shock. DO NOT pull or drag the power supply line
2. Ventilation: This set must be put in ventilated place. DO NOT put disk on it or cloth to cover it the distance away from the wall should not be less than 10 centimeters. DO NOT put this set on the bed.
3. Casing Dismantling: DO not dismantle the casing if one touches the inner components, he will probably get serious electric shock.
4. Unusual smell: When you discover unusual smell and smoke, cut power supplies immediately and pulls out the plus from the outlet on the wall Contact the sell shop or nearest repairing center  
Attention: This sat applies to AC 120V-240W 50Hz-60Hz power supply Use standard power supply Please be sure for the correct power supply before use it

## 1-1 PRODUCT FEATURES

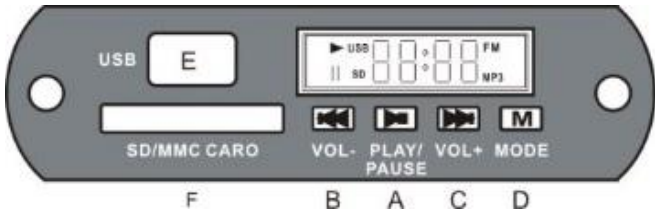
1. High output power;
2. With Karaoke function;
3. The treble is clear, natural and bass is powerful;
4. Compatible to DVD/VCD/CD/TAPE/VIDEO/MP4/AUX

## 2-1 FRONT PANEL FUNCTION INSTRUCTION

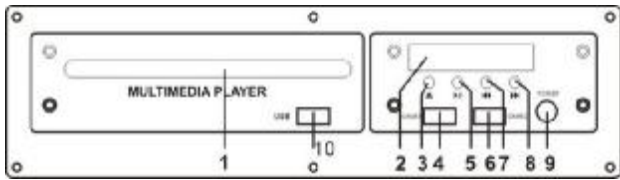


01. Guitar input socket
02. Guitar sound volume knob
03. Mic echo vol.
04. Mic vol
05. Mic priority
06. Mic input socket
07. Music vol.
08. INPUT(DVD/MP3)
09. EQ MUSIC EQ control knob
10. Charging indicator

11. Full of electric lights



- A. Play/pause: (FM state; short -cycle according to the selected table, according to the factory, automatic search platform, automatic save table)
- B. For MP3 mode, previous song with short press. For FM mode, previous channel with short press. Volume reduce with long press
- C. For MP3 mode, next song with short press. For FM mode, Next channel with short press. Volume increase with long press.
- D. Mode conversion
- E.USB card jack
- F.SD/MMC card socket



- 01. The DVD disc slot
- 02. LED Display
- 03. OPEN/CLOSE button
- 04. Game stick input 1
- 05. Play/pause button
- 06. Game stick input 2
- 07. Previous song
- 08. Next song
- 09. Power switch
- 10. USB socket



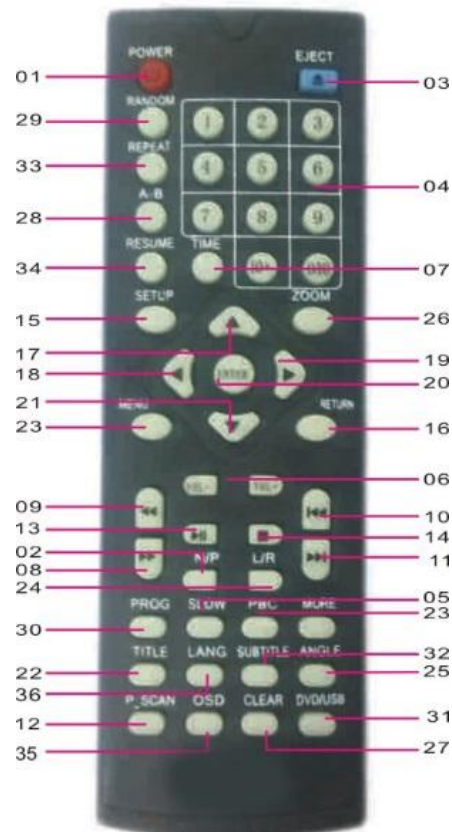
- 1.SCREEN ROTATION
- 2.THE SIMULATION MENU
- 3.THE POWER SWITCH
- 4.THE SIMULATION -
- 5.THE SIMULATION +

## REMOTE CONTROL

01. Standby state
02. MODE: Mode conversion (USB/AUX/FM/Bluetooth)
03. Previous song with short press. For FM mode, manual search channel backward which has signal with long press
04. Play/pause in Mp3 mode. For FM mode, to the next channel with short press
05. Next song with short press. For FM mode, manual search channel forward which has signal with long press.
06. For MP3 mode, change EQ adjustment with short press. For FM mode, to the previous channel with short press.
07. VOL+: Volume increase
08. VOL-: Volume reduce
09. Mute
10. Repeated a song in MP3 mode, cancel recording file with long press
11. SCAN/INT/ALL: For FM mode, automatic search channel with one press . The channel will automatic saved in the system
12. 0-9 directly select the channel which has saved in the system already
13. RECORD: recording
14. REPLAY: replay



- 01.POWER
- 02.PAL/NTSC
- 03.OPEN/CLOSE
- 04.1-10,10+ : THE NUMBER CHOOSING KEY
- 05.SHOW
- 06.VOLUME
- 07.TIME SETUP
- 08.FORWARD
- 09.REWIND
- 10.PREVIOUS
- 11.NEXT
- 12.P\_SCAN
- 13.PLAY/PAUSE
- 14.STOP
- 15.SETUP
- 16.RETURN
- 17.THE UP DIRECTION IN DVD MODE BUTTON
- 18.THE LEFT DIRECTION IN DVD MODE BUTTON
- 19.THE RIGHT DIRECTION IN DVD MODE BUTTON
- 20.ENTER
- 21.THE DOWN DIRECTION IN DVD MODE BUTTON
- 22.DISPLAY TITLE SCREENING DVD MODE NCD 2 0 DISC
- 23.PBC:THE DOWN DIRECTION IN DVD MODE BUTTON



- 24.LEFT/RIGHT SOUND CHANNEL
- 25.ANGLE
- 26.ZOOM
- 27.CLEAR
- 28.REPEAT THE PROGRAM A-B
- 29.RANDOM
- 30.PROG
- 31.USB/DVD
- 32.SUBTITLE
- 33.REPEAT
- 34.RESUME
- 35.OSD
- 36.LANGUAGE

**Bluetooth Use Instruction:**

The Bluetooth sign light twinkles. Bluetooth connect successfully when speaker 'DI' sound Set on mobile phone. Connect to Bluetooth data, search equipment and match properly The proper connect Bluetooth lights keep on, and music work on speaker normally

**Record function**

Speaker can record the sound of music from microphone. FM radio, or AUX sound sources. And save the record file in memory card.

Operation as below:

1. Put the memory card on speaker
2. Connect with microphone to speaker or turn FM radio to play, or connect AUX and play
3. Press “Record” button to record, after record finish. Press “Record” again to save the file
4. Press” Replay” to play the record file

**3-1 USE INSTRUCTION**

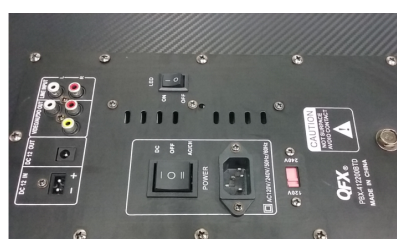
1. connect the signal cables according to the back panel connection instruction
2. To sure the correct the Voltages .insert electronic source cable, turn on the power switch button
3. Adjust function keys to your satisfied best sound effect

**4-1 PRODUCT EQUIPMENT LIST**

1. Speaker
2. Power cable
3. VIDEO remote control
4. User manual
5. AV cable

**5-1 BACK PANEL CONNECTION DIAGRAM**

- 1.Audio input jack
- 2.Speaker LED power supply switch



- 3.100V/240V power switch
- 4.AC input
- 5.AC DC switch
- 6.DC 12V OUTPUT
- 7.Video out
- 8.Audio out
- 9.DC 12V INPUT

## 6-1 PRECAUTION

In order to prevent operating problems or serious damage to the device, please comply with the following remarks

1. Hold the electric out let while pulling out the plug. Do not pull the wire.
2. Operating audio appliances should be kept away from heating facilities.
3. Do not attempt to fix or revise the circuit
4. Do not touch the internal parts, otherwise electric shock or serious damage to the device might cause
5. Pull out the plug if not in use for long
6. Ensure the audio product in a ventilated dry condition with about 20mm Space around as for heating dispersion

Warning: Do not expose this appliance to rain or moisture and vessel containing liquids, such as a cup.

Vase, is not supposed to be placed on or above the appliance

This device complies with part 15 of the FCC Rules. Operation is subject to the following two conditions: (1) This device may not cause harmful interference, and (2) this device must accept any interference received, including interference that may cause undesired operation.

Any Changes or modifications not expressly approved by the party responsible for compliance could void the user's authority to operate the equipment.

**Note:** This equipment has been tested and found to comply with the limits for a Class B digital device, pursuant to part 15 of the FCC Rules. These limits are designed to provide reasonable protection against harmful interference in a residential installation. This equipment generates uses and can radiate radio frequency energy and, if not installed and used in accordance with the instructions, may cause harmful interference to radio communications. However, there is no guarantee that interference will not occur in a particular installation. If this equipment does cause harmful interference to radio or television reception, which can be determined by turning the equipment off and on, the user is encouraged to try to correct the interference by one or more of the following measures:

- Reorient or relocate the receiving antenna.
- Increase the separation between the equipment and receiver.
- Connect the equipment into an outlet on a circuit different from that to which the receiver is connected.
- Consult the dealer or an experienced radio/TV technician for help.