



About this product

The **Commuter Pro RT** has an anti-glare beam to provide light exactly where needed, and not into oncoming traffic. This light is daytime visible from 2km.

The **Bontrager Flare RT** adds safety as a rear daytime running light. Both are rechargeable and remote controllable when paired with our Transmitter Micro Remote.



WARNING:

The front light is very bright. Do not stare at an operating front light. Staring may be harmful to the eyes.

WARNING:

The front light may be hot and could cause a burn or damage material it may contact. Do not activate (turn on) light in enclosed area.

WARNING:

Do not use if the battery is impacted. Also do not puncture, crush, deform, disassemble, or heat a lithium-ion battery above the permitted temperature. Inflicted damage to the battery may result in a fire, explosion, or coming in contact with specks of lithium or lithium dust.

IMPORTANT: Check your local lighting laws. Flashing lights and full brightness may not be allowed in all locations. These lights do not conform to the German road traffic regulation StVZO.

Specifications

- **Battery charging and operating temperature:** 32°F to 104°F (0°C to 40°C)
Reduced performance when operating below freezing.
- **Commuter Pro RT:** 4900 mAh, 3.6V, 17.64Wh, 21700 lithium-ion battery
Weight: 228g (8.0oz)
- **Flare RT:** 420mAh, 3.7 Vdc, 1.6 Wh lithium polymer battery
- **Commuter Pro RT/Flare RT:** Water Proof Rating IPX7

Table 2

Flare RT mode change

Quick-press the power button. Each press moves to the next mode.

Model	Power Button/Status LED	Mode	Max Output (lumens)	Runtime (hours) ²	Power Button/Status LED Color	Battery Life, %
Flare RT		Day Flash ¹	90	6	Green Steady	25 to 100%
		All Day Flash ¹	45	12		
		Night Flash	5	15	Red Steady	5 to 25%
		Day Steady ¹	25	4.5	Red Flashing	Less than 5%
		Night Steady	5	13.5		

¹With auto brightness enabled.

Battery charging and care (see Table 3)

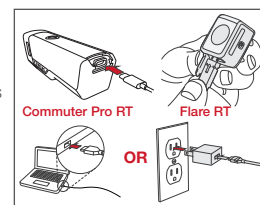
Both the Commuter Pro RT and Flare RT were charged prior to packaging, but we recommend that you charge them before first use.

To charge the battery

IMPORTANT: For best results, charge at room temperature in a dry place. Use a certified CE or UL approved USB-C cable rated for 2Amps or greater. Avoid extreme conditions including wet, cold, or extreme heat.

Note: If the main button indicator is flashing red while plugged in, the light is either too hot or too cold to charge. Charging will begin when the light is between 32°F and 104°F (0°C and 40°C).

1. Open the USB port cover.
2. Plug the USB-C cable into the USB port on the light.
3. Plug the cable into a wall adapter.
4. When the charge is complete, unplug the USB-C cable and close the USB port cover.



IMPORTANT: Ensure the USB cover is latched before riding in rain or in wet conditions. If the USB cover is not closed, damage to the light may occur.

Table 3

Commuter Pro RT battery charging and care

- Left row: Commuter Pro RT battery level
- Right row: blank when charging
- Top light will flash until charged

Fuel Gauge	Charge, %	Charge Duration
Five lights green	80% – 100%	5 hours
Four lights green	60% – 80%	
Three lights green	40% – 60%	
Two lights amber	20% – 40%	
One light red	5% – 20%	
One light red flashing	0% – 5%	

1. When fully charged, the five green lights stay on for 1 minute, then turn off.
2. When plugged in after the battery is completely discharged, it may take a minute for the LED indicator to turn on indicating a charge is occurring.

Table 4

Flare RT charging status indicator

The status LED tells the percent of battery charge that remains.

Power Button/Status LED Color	Charge, %	Charge Duration (hours)
Red Flash	0% – 75%	1.5
Green Flash	75%-99%	
Green Steady ²	99%-100%	

Low battery feature Commuter Pro RT

The left row of lights will show:

- One red light when below 20%
- One red light flashing when 5% or below

NOTE: When below 5%, the modes and settings will be disabled.

Low battery feature Flare RT

When the battery has fallen below 20% life, the bottom LED will flash red.

Caring for the battery

- Store the light at room temperature in a dry place. Avoid moisture, or extreme hot or cold.
- Store the light in a charged condition. Battery life will decrease if the battery is stored in a fully discharged condition.
- Over time, the run time of the battery will diminish. Expect about 500 full charges, depending on care. After a full life, the battery will continue to charge but with a lower run time. When the run time is unsatisfactory, do not open the case of the light or incinerate; please recycle.

Traveling with the battery

When traveling by air, verify with your carrier how lithium ion batteries of this capacity must be treated. Often these lights need to be packed in carry-on luggage.

Protection

These lights are designed and tested for use in all riding conditions and have an ingress rating of IPX7. Lights are not intended to be stored outdoors and should be stored indoors after use.

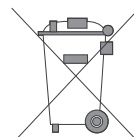
Recycling

Please recycle the light with the battery. In the US, you can find out where to do this at www.call2recycle.org.

European and International consumers, please contact your bike shop.

This symbol on the product(s) and / or accompanying documents means that used electrical and electronic products should not be mixed with general household waste. For proper treatment, recovery and recycling, outside the US, please take this product(s) to designated collection points. Alternatively, in some countries you may be able to return your products to your local retailer upon purchase of an equivalent new product.

Disposing of this product correctly will help save valuable resources and prevent any potential negative effects on human health and the environment, which could otherwise arise from inappropriate waste handling. Please contact your local authority for further details of your nearest designated collection point. Penalties may be applicable for incorrect disposal of this waste, in accordance with your national legislation.



Commuter Pro RT and Bontrager Flare RT

trekbikes.com

PN 5286387

For more information

If you need help not offered by this manual, talk to your Trek bike shop or visit trekbikes.com.

Parts list

	Commuter Pro RT (included)
Light	
Mount	25.4 - 35.0mm Adjustable Bar Mount with shim PN W552375
Charging Cable	USB-C Cable PN W5268686
	Flare RT (included)
Light	
Mount	Quick-connect bracket for tail light PN W533846
Charging Cable	Micro USB Cable PN W559136 (4-wire)

WARNING

A bicycle without correct lights and reflectors might be difficult for other people to see, and you might not be able to see them. If you cannot see, or other people cannot see you, you could have an accident. Make sure your lights are set up, operating correctly, and that batteries are charged.

Table 1

Modes, run times, and battery life

Power Button/Status LED	Mode	Max Output (lumens)	Run time (hours)	Power Button
	High beam	1000	1.5	Blue
	Low beam	500	3.0	White
	Day Flash	300 / OFF	12	Blue pulse

Basic operation Commuter Pro RT (see Table 1)

1. To turn on, double click the power button.
 - The power button illuminates.
2. To turn off, press and hold the power button for 1 second.
3. To change modes, single-click the power button to advance through the mode list: High beam > Low beam > Day Flash
- The power button shows blue solid for High beam, white solid for Low beam, and blue pulse for Day Flash.
 - If Wireless is enabled, the power button will show blue flash before indicating the mode.

Enable/Disable Flash Bypass mode

For riding at night, you can disable the flash mode to easily transition between steady (basic) modes.

1. To enable Flash Bypass mode: With the light on, press and hold the power button for 8 seconds.
2. Release the button after the flash.
- Flash Bypass mode changes the light from flashing to steady. In this setting, a single button click will alternate between High beam and Low beam modes only — no flash.

Charge-out feature (cable not included)

The Commuter Pro RT can become a backup battery device.

1. To enable the charge-out feature, turn the light off.
 2. Press and hold the power button for 8 seconds.
 3. When the main light flashes once, release the button.
 - Once in charge out mode, connect a USB-C cable from the Commuter Pro RT to the device to charge.
- NOTE:** The light must be in charge out mode before the USB-C cable is connected to the device.
- The left light row indicates the remaining battery life for the Commuter Pro RT.
 - The right light row flashes to indicate power is shared to the other device.
4. To exit charge-out mode, unplug any external device and single-click the power button.
 - The right light row will stop blinking.

Pairing feature

The Commuter Pro RT can be paired to another Trek/Bontrager RT light wirelessly.

1. To pair a light, turn the Commuter Pro RT off.
2. Place the light within 6in (15cm) of the Commuter Pro RT.
3. Press and hold the Commuter Pro RT power button for 15 seconds.
4. When the main light flashes twice, release the button.
 - The bottom indicator button LED flashes red while searching, then a quick blue flash when discovered.
 - Once discovered, the remote light turns on and pairing stops.
 - The right light row shows the remote light's battery status, then row lights disappear.
5. To disable a tethered light, press and hold the Commuter Pro RT power button for 15 seconds.

Control a paired light

1. To turn on a paired light, double-click the Commuter Pro RT.
2. To turn off the paired light, press the Commuter Pro RT power button for 1 second.
3. To change the remote light's mode, use the Commuter Pro RT to turn the paired light on (double-click).
4. Use the button on the paired light to advance the mode.
5. **Turn the light off with the Commuter Pro RT**

Reset

To reset the light to factory default settings:

- With the light plugged in to charge, press and hold the power button for 15 seconds. The main LED will flash once at 8 seconds and again at 15 seconds.
- Release the button after the second flash.

Basic operation Flare RT (see Table 2)

- To power on, press the power button. The light will be in the output mode last used.
- To power off, press and hold the power button until the light turns off.

Locking/Unlocking the mode

Turn on and select the desired mode, then press and hold the power button 8 seconds to select it. The light will turn off and the main LED will flash once. To unlock, repeat the process.

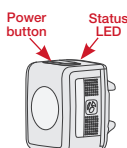
Reset

To reset the light to factory default settings, with the light on, press and hold the power button for 15 seconds. The main LED will flash once at 8 seconds, and again at 15 seconds. Release the button after the second flash.

Wireless Communication

The light is shipped with ANT+ and Bluetooth wireless connectivity enabled. To disable, with the light off, press and hold the power button for 15 seconds. The main LED will flash once at 8 seconds, and again at 15 seconds. Release the button after the second flash.

NOTE: The status LED turns on blue for 3 seconds IF the wireless is enabled. After 3 seconds, the status LED continues to display the battery level. If the wireless is detected, the status LED immediately displays the battery level.



Light installation

Commuter Pro RT information, installation, and special features

NOTE: Due to the unique cutoff beam, this front light cannot be mounted upside down.

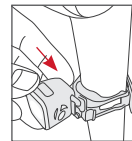
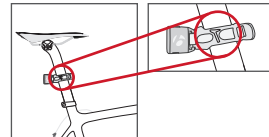
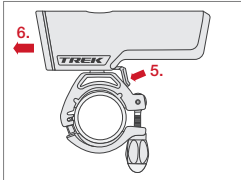
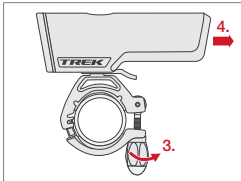
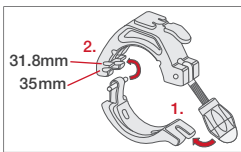
Installation

1. Loosen knob and open.
2. Adjust for bar size (31.8mm or 35mm).
3. Close and tighten knob.
4. Slide light onto mount until it locks in place.

NOTE: Use provided shim to fit 25.4 bars.

Removal

5. Press down.
6. Slide light to remove.



Trek Bicycle Corporation contact information:

North America

Trek Bicycle Corporation
801 West Madison Street
Waterloo, WI 53594 USA
Tél: 1-800-585-8735

Europe

Bikeurope BV
Ceintuurbaan 2-20C
3847 LG Harderwijk
The Netherlands
Tel: +31 (0)88 4500699

Australia

Trek Bicycle Corp. Au.
8 Townsville Street
(Level One)
Fyshwick (ACT)
2609 AU
Tél: +61 (02) 61 732 400

United Kingdom

Trek Bicycle Corporation Ltd.
9 Sherbourne Drive, Tilbrook,
Milton Keynes, MK7 8HX
Tél: +44 1908 360 140

Industry Canada Compliance

CAN ICES-3(B)/NMB-3(B)

These devices comply with Industry Canada license-exempt RSS standard(s).

Operation is subject to the following two conditions: (1) these devices may not cause interference, and (2) these devices must accept any interference, including interference that may cause undesired operation of the device.

Leprésent appareil est conforme aux CNR d'Industrie Canada applicable aux appareils radio.

Exempts de licence. L'exploitation est autorisée aux deux conditions suivantes:

(1) l'appareil ne doit pas produire de brouillage, et (2) l'utilisateur de l'appareil doit accepter tout brouillage radioélectrique subi, même si le brouillage est susceptible d'en compromettre le fonctionnement.

The Commuter Pro RT and the Flare RT lighting equipment comply with FCC and IC radiation exposure limits set forth for an uncontrolled environment. Status of the listing in the Industry Canada's REL (Radio Equipment List) can be found at the following web address:

<http://www.ic.gc.ca/app/sitt/reitel/srch/nwRdSrch.do?lang=eng>

Additional Canadian information on RF exposure also can be found at the following web address:

<http://www.ic.gc.ca/eic/site/smt-gst.nsf/eng/sf08792.html>

Cet appareil est conforme aux limites d'exposition à la fréquence radio (FR) d'IC et de FCC. La puissance de sortie émise par l'appareil de sans fil Ion Pro RT est inférieure à la limite d'exposition aux fréquences radio d'Industry Canada (IC). Cet appareil est en contact direct avec l'utilisateur dans des conditions normales d'utilisation. L'émetteur ne doit pas être co-implémenté ou utilisé conjointement avec une autre antenne ou un autre émetteur. Ce périphérique est homologué pour l'utilisation au Canada. Pour consulter l'entrée correspondant à l'appareil dans la liste d'équipement radio (REL - Radio Equipment List) d'Industry Canada rendez-vous sur: <http://www.ic.gc.ca/app/sitt/reitel/srch/nwRdSrch.do?lang=fra>

Pour des informations supplémentaires concernant l'exposition aux RF au Canada rendezvous sur:

<http://www.ic.gc.ca/eic/site/smt-gst.nsf/fra/sf08792.html>

If you wish to see these manuals in another language, please visit www.trekbikes.com/support and look for the Commuter Pro RT & Flare RT manual on the Manuals and user guides page.

CZ Pokud si přejete vidět tyto příručky v jiném jazyce, navštívte prosím www.trekbikes.com/support a vyhledejte příručku Commuter Pro RT & Flare RT na stránce Návodů a uživatelské příručky.

DE Wenn Sie dieses Handbuch in einer anderen Sprache lesen möchten, besuchen Sie bitte www.trekbikes.com/support und suchen Sie auf der Seite Handbücher und Benutzerhandbücher nach dem Commuter Pro RT -Handbuch.

FR Si vous souhaitez voir ce manuel dans une autre langue, rendez-vous sur le site www.trekbikes.com/support et recherchez le manuel Commuter Pro RT sur la page Manuels et guides de l'utilisateur.

ES Si desea ver este manual en otro idioma, visite www.trekbikes.com/support y busque el manual de Commuter Pro RT en la página Manuales y guías del usuario.

IT Se desideri vedere questi manuali in un'altra lingua, visita www.trekbikes.com/support e cercare il manuale Commuter Pro RT e Flare RT nella pagina Manuali e guide utente.

PL Jeśli chcesz zobaczyć tę instrukcję w innym języku, odwiedź stronę www.trekbikes.com/support i poszukaj instrukcji Commuter Pro RT na stronie Podręczniki i instrukcje obsługi.

Flare RT installation

1. Install the quick-connect bracket on the seatpost with the lever to the drive side of the bike. When installed properly, the lens will be perpendicular to the ground and the saddle icon will point the same direction as the saddle on the bike.

2. Stretch the strap around the seatpost and connect to the hook.

3. Slide the light onto the bracket.

Statements of Regulatory Compliance

FCC Compliance

Commuter Pro RT & Flare RT

These devices comply with part 15 of the FCC Rules. Operation is subject to the following conditions: (1) these devices may not cause harmful interference, and (2) these devices must accept any interference received, including interference that may cause undesired operation.

NOTE: This equipment has been tested and found to comply with the limits for a Class B digital device, pursuant to Part 15 of the FCC Rules. These limits are designed to provide reasonable protection against harmful interference in a residential installation. This equipment generates uses and can radiate radio frequency energy and, if not installed and used in accordance with the instructions, may cause harmful interference to radio communications. However, there is no guarantee that interference will not occur in a particular installation.

These products may cause interference to radio equipment and should not be installed near maritime safety communications equipment or other critical navigation or communication equipment operating between 0.45-30 MHz.

If this equipment does cause harmful interference to radio or television reception, which can be determined by turning the equipment off and on, the user is encouraged to try to correct the interference by one or more of the following measures:

- Reorient or relocate the receiving antenna.
- Increase the separation between the equipment and receiver.
- Connect the equipment into an outlet on a circuit different from that to which the receiver is connected.
- Consult the dealer or experienced radio / TV technician for help.

NOTES: TREK BICYCLE CORPORATION IS NOT RESPONSIBLE FOR ANY RADIO OR TV INTERFERENCE CAUSED BY UNAUTHORIZED MODIFICATIONS TO THIS EQUIPMENT. ANY CHANGES OR MODIFICATIONS NOT EXPRESSLY APPROVED BY TREK BICYCLE CORPORATION OF THIS DEVICE COULD VOID THE USER'S AUTHORITY TO OPERATE THE DEVICE.

Exposure to radio frequency energy.

The radiated output power of this device meets the limits of FCC/IC radio frequency exposure limits. This device should be operated with a minimum separation distance of 5mm (1/4 inches) between the equipment and a person's body.

European Union Compliance

Trek Bicycle Corporation and Bontrager hereby declare that the lighting device(s) identified as 'Commuter Pro RT' and 'Flare RT' are in compliance with the following European Directives:

Commuter Pro RT

- EMC Directive 2014/30/EU
- Low Voltage Directive 2014/35/EU
- RoHS Directive 2011/65/EU
- RoHS Directive 2015/863/EU
- Radio Equipment Directive 2014/53/EU

Flare RT

- EMC Directive 2014/30/EU
- Low Voltage Directive 2014/35/EU
- RoHS Directive 2011/65/EU
- RoHS Directive 2015/863/EU
- Radio Equipment Directive 2014/53/EU

The full text of the EU declaration of conformity is available from your dealer, or at the following internet address: www.trekbikes.com/coc-doc

The Commuter pro RT and the Flare RT do not conform to the German StVZO regulations.

PT Se você deseja ver este manual em outro idioma, visite www.trekbikes.com/support e procure o manual Commuter Pro RT na página Manuais e guias do usuário.

NL Als u deze handleiding in een andere taal wilt bekijken, gaat u naar www.trekbikes.com/support en zoekt u naar de Commuter Pro RT -handleiding op de pagina Handleidingen en gebruikershandleidingen.

SL Ak si chcete pozrieť tieto príručky v inom jazyku, navštívte stránku www.trekbikes.com/support a vyhľadajte príručku Commuter Pro RT & Flare RT na stránke Návodů a používateľské príručky.

JA このマニュアルを別の言語で表示したい場合は、www.trekbikes.com/supportにアクセスし、マニュアルおよびユーザーガイドページのCommuter Pro RT マニュアルを参照してください。

KO 이 매뉴얼을 다른 언어로보고 싶다면 www.trekbikes.com/support를 방문하여 매뉴얼 및 사용자 가이드 페이지에서 Commuter Pro RT 매뉴얼을 찾으십시오.

ZH 如果您希望以其他语言查看本手册, 请访问www.trekbikes.com/support, 并在手册和用户指南页面上查找Commuter Pro RT 手册。