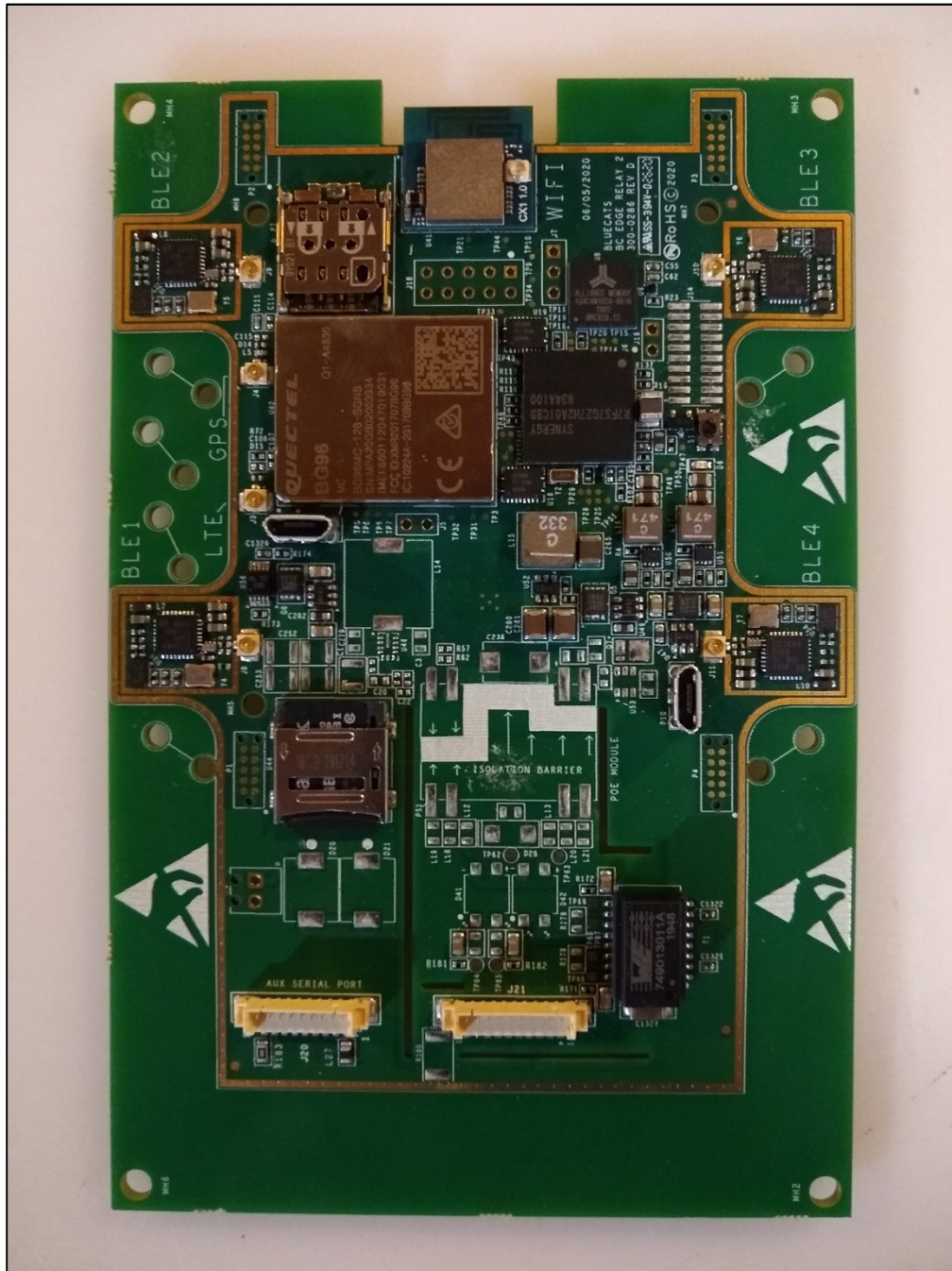


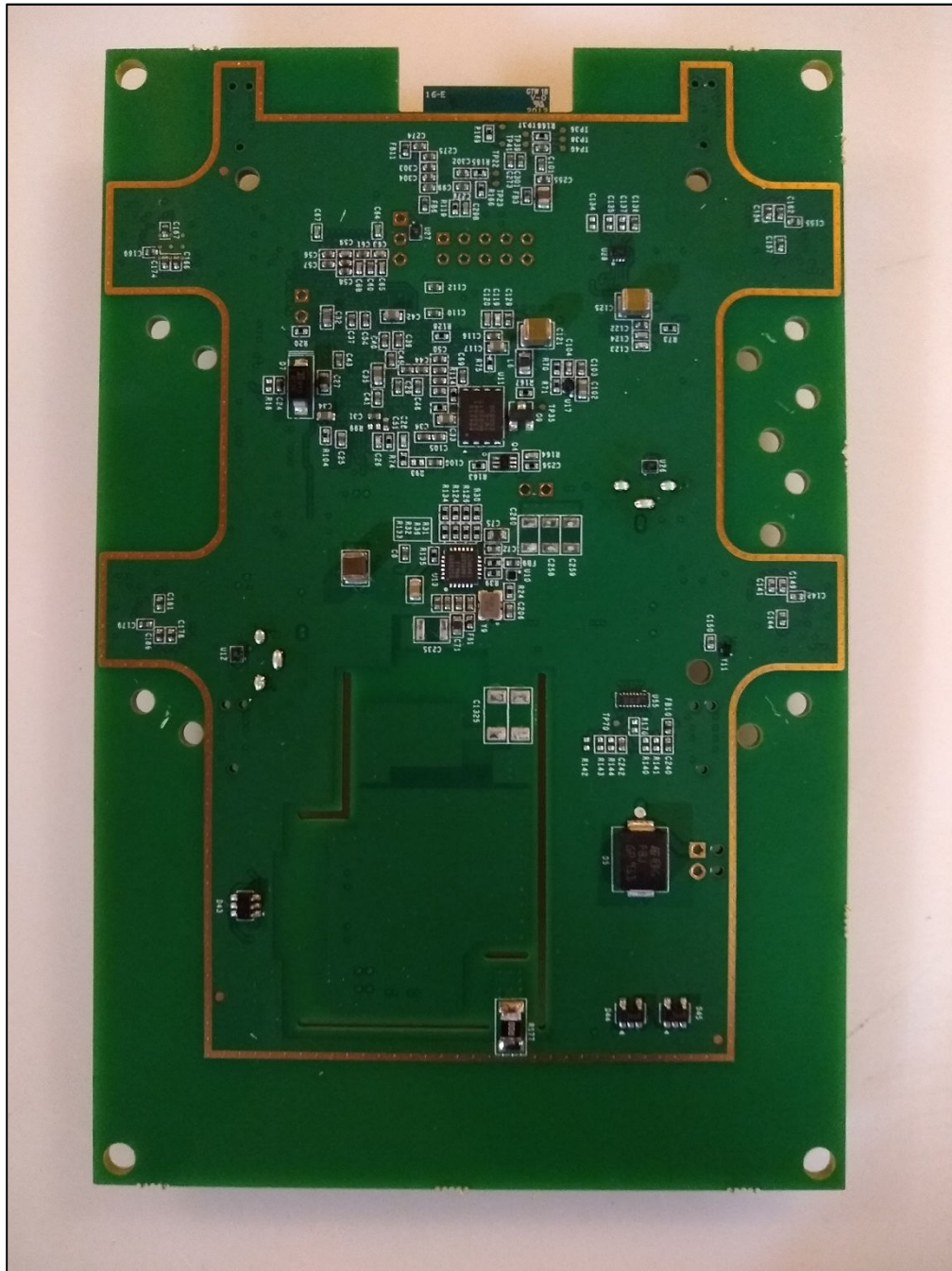


Photograph 1. EUT – Front Cover Removed



Photograph 2. EUT – PCB Front Side





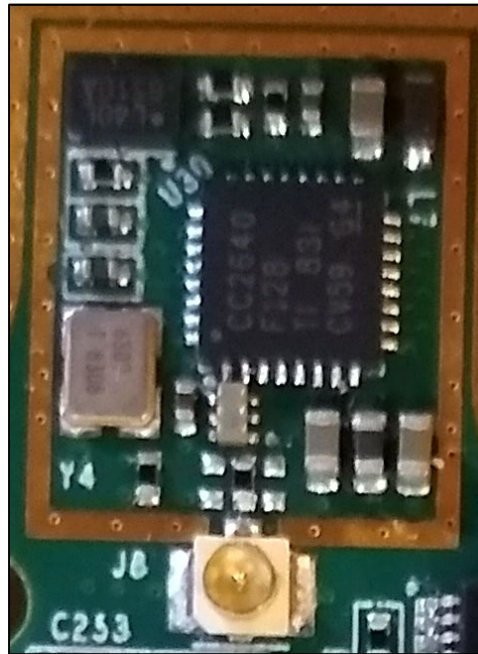
Photograph 3. EUT – PCB Back Side



Photograph 4. Cellular Module (Quectel BG96)



Photograph 5. WLAN Module (RedPine RS9116W-DB00-CC1)



Photograph 6. BLE Chip (Texas Instruments CC2640)