

1.0 Purpose

This document describes the LBRD-2 Wearable Antenna Assembly (WAA) product using photos of the external device in accordance with FCC Part 15 and Part 18 guidelines.

2.0 Scope

This document applies to the WAA product as part of the Freedom Spinal Cord Stimulator (SCS) System.

3.0 LBRD-2 External Photos



Figure 1. (left) Front side of LBRD-2. (right) Back side of LBRD-2.



Figure 2. Top face of the LBRD-2



Figure 3. Bottom face of the LBRD-2

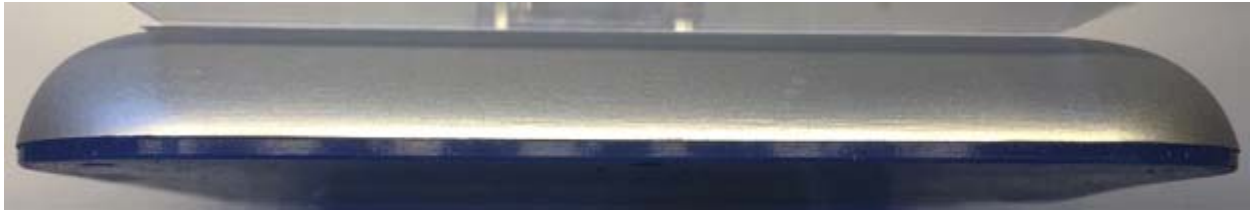


Figure 4. Right Face of the LBRD-2



Figure 5. Left Face of the LBRD-2

4.0 LBRD-2 Accessory

The LBRD-2 has one accessory, a wall-plug. Shown in Figure 6.



Figure 6. Image of the USB Wall Plug used in the LBRD-2 System.