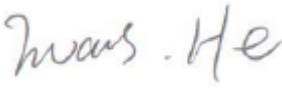
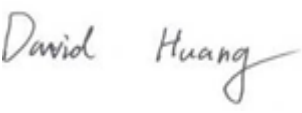



# EMC TEST REPORT



Report No.: 17070791-FCC-E

Supersede Report No: N/A

Applicant	Bean Information Technology Co., Ltd.	
Product Name	Smartwatch	
Model No.	S2	
Serial No.	N/A	
Test Standard	FCC Part 15 Subpart B Class B:2016, ANSI C63.4: 2014	
Test Date	August 25 to September 07, 2017	
Issue Date	September 08, 2017	
Test Result	<input checked="" type="checkbox"/> Pass <input type="checkbox"/> Fail	
Equipment complied with the specification <input checked="" type="checkbox"/>		
Equipment did not comply with the specification <input type="checkbox"/>		
		
Evans He Test Engineer	David Huang Checked By	
This test report may be reproduced in full only Test result presented in this test report is applicable to the tested sample only		

Issued by:

**SIEMIC (SHENZHEN-CHINA) LABORATORIES**

Zone A, Floor 1, Building 2 Wan Ye Long Technology Park

South Side of Zhoushi Road, Bao' an District, Shenzhen, Guangdong China 518108

Phone: +86 0755 2601 4629801 Email: [China@siemic.com.cn](mailto:China@siemic.com.cn)

## Laboratories Introduction

SIEMIC, headquartered in the heart of Silicon Valley, with superior facilities in US and Asia, is one of the leading independent testing and certification facilities providing customers with one-stop shop services for Compliance Testing and Global Certifications.



In addition to testing and certification, SIEMIC provides initial design reviews and compliance management throughout a project. Our extensive experience with China, Asia Pacific, North America, European, and International compliance requirements, assures the fastest, most cost effective way to attain regulatory compliance for the global markets.

### Accreditations for Conformity Assessment

Country/Region	Scope
USA	EMC, RF/Wireless, SAR, Telecom
Canada	EMC, RF/Wireless, SAR, Telecom
Taiwan	EMC, RF, Telecom, SAR, Safety
Hong Kong	RF/Wireless, SAR, Telecom
Australia	EMC, RF, Telecom, SAR, Safety
Korea	EMI, EMS, RF, SAR, Telecom, Safety
Japan	EMI, RF/Wireless, SAR, Telecom
Singapore	EMC, RF, SAR, Telecom
Europe	EMC, RF, SAR, Telecom, Safety

Test Report	17070791-FCC-E
Page	3 of 33

This page has been left blank intentionally.

## CONTENTS

1. REPORT REVISION HISTORY .....	5
2. CUSTOMER INFORMATION.....	5
3. TEST SITE INFORMATION .....	5
4. EQUIPMENT UNDER TEST (EUT) INFORMATION .....	6
5. TEST SUMMARY .....	7
6. MEASUREMENTS, EXAMINATION AND DERIVED RESULTS.....	8
6.1 AC POWER LINE CONDUCTED EMISSIONS.....	8
6.2 RADIATED EMISSIONS.....	14
ANNEX A. TEST INSTRUMENT.....	19
ANNEX B. EUT AND TEST SETUP PHOTOGRAPHS.....	20
ANNEX C. TEST SETUP AND SUPPORTING EQUIPMENT .....	29
ANNEX D. USER MANUAL / BLOCK DIAGRAM / SCHEMATICS / PARTLIST .....	32
ANNEX E. DECLARATION OF SIMILARITY .....	33

## 1. Report Revision History

Report No.	Report Version	Description	Issue Date
17070791-FCC-E	NONE	Original	September 08, 2017

## 2. Customer information

Applicant Name	Bean Information Technology Co., Ltd.
Applicant Add	C203-204 Virtual University Park Industrial Building, Yuexing Three Road, South of Technology Park, Nanshan District, Shenzhen, China
Manufacturer	Bean Information Technology Co., Ltd.
Manufacturer Add	C203-204 Virtual University Park Industrial Building, Yuexing Three Road, South of Technology Park, Nanshan District, Shenzhen, China

## 3. Test site information

Lab performing tests	SIEMIC (Shenzhen-China) LABORATORIES
Lab Address	Zone A, Floor 1, Building 2 Wan Ye Long Technology Park South Side of Zhoushi Road, Bao' an District, Shenzhen, Guangdong China 518108
FCC Test Site No.	535293
IC Test Site No.	4842E-1
Test Software of Radiated Emission	Radiated Emission Program-To Shenzhen v2.0
Test Software of Conducted Emission	EZ-EMC(ver.lcp-03A1)

## 4. Equipment under Test (EUT) Information

Description of EUT:	Smartwatch
Main Model:	S2
Serial Model:	N/A
Antenna Gain:	Bluetooth/BLE: 1.2dBi
Antenna Type:	Monopole antenna
Input Power:	Battery: Spec: 3.7V, 180mAh, 0.6Wh
Equipment Category :	JBP
Type of Modulation:	Bluetooth: GFSK, $\pi$ /4DQPSK, 8DPSK BLE: GFSK
RF Operating Frequency (ies):	Bluetooth& BLE: 2402-2480 MHz
Number of Channels:	Bluetooth: 79CH BLE: 40CH
Port:	Charging Port and data Port
Trade Name :	Bit
FCC ID:	2AHWTS2
Date EUT received:	August 24, 2017
Test Date(s):	August 25 to September 07, 2017

## 5. Test Summary

The product was tested in accordance with the following specifications.

All testing has been performed according to below product classification:

FCC Rules	Description of Test	Result
§15.107; ANSI C63.4: 2014	AC Power Line Conducted Emissions	Compliance
§15.109; ANSI C63.4: 2014	Radiated Emissions	Compliance

### Measurement Uncertainty


Parameter	Uncertainty
AC Power Line Conducted Emissions (150kHz~30MHz)	±3.11dB
Radiated Emission(30MHz~1GHz)	±5.12dB
Radiated Emission(1GHz~6GHz)	±5.34dB

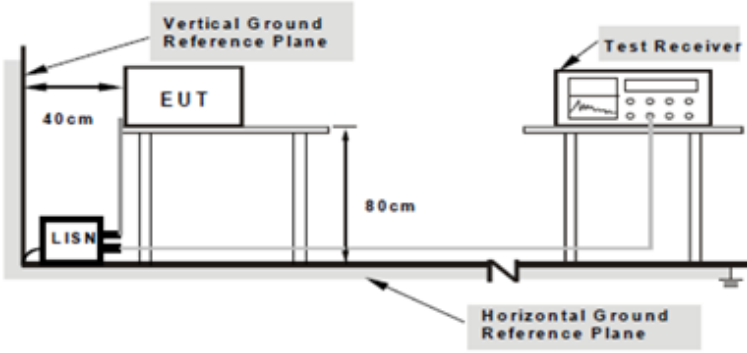
## 6. Measurements, Examination And Derived Results

### 6.1 AC Power Line Conducted Emissions

Temperature	26 °C
Relative Humidity	57%
Atmospheric Pressure	1025mbar
Test date :	August 25, 2017
Tested By :	Evans He

#### Requirement(s):

Spec	Item	Requirement	Applicable														
47CFR§15.107	a)	For Low-power radio-frequency devices that is designed to be connected to the public utility (AC) power line, the radio frequency voltage that is conducted back onto the AC power line on any frequency or frequencies, within the band 150 kHz to 30 MHz, shall not exceed the limits in the following table, as measured using a 50 [mu] H/50 ohms line impedance stabilization network (LISN). The lower limit applies at the boundary between the frequencies ranges.															
		<table><tr><th rowspan="2">Frequency ranges (MHz)</th><th colspan="2">Limit (dBµV)</th></tr><tr><th>QP</th><th>Average</th></tr><tr><td>0.15 ~ 0.5</td><td>66 – 56</td><td>56 – 46</td></tr><tr><td>0.5 ~ 5</td><td>56</td><td>46</td></tr><tr><td>5 ~ 30</td><td>60</td><td>50</td></tr></table>		Frequency ranges (MHz)	Limit (dBµV)		QP	Average	0.15 ~ 0.5	66 – 56	56 – 46	0.5 ~ 5	56	46	5 ~ 30	60	50
		Frequency ranges (MHz)			Limit (dBµV)												
				QP	Average												
		0.15 ~ 0.5		66 – 56	56 – 46												
		0.5 ~ 5		56	46												
5 ~ 30	60	50															

Test Setup	 <p>Note: 1.Support units were connected to second LISN. 2.Both of LISNs (AMN) are 80cm from EUT and at least 80cm from other units and other metal planes support units.</p>
------------	---

Procedure	<ol style="list-style-type: none"> <li>The EUT and supporting equipment were set up in accordance with the requirements of the standard on top of a 1.5m x 1m x 0.8m high, non-metallic table.</li> <li>The power supply for the EUT was fed through a 50Ω /50mH EUT LISN, connected to filtered mains.</li> </ol>
-----------	--

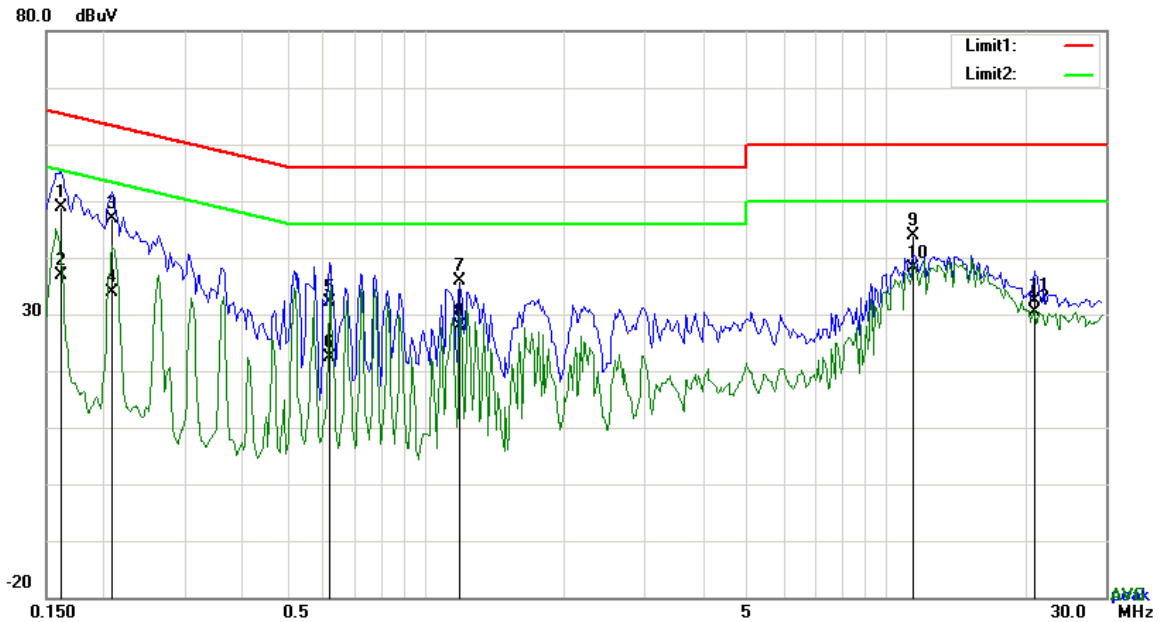


	<p>3. The RF OUT of the EUT LISN was connected to the EMI test receiver via a low-loss coaxial cable.</p> <p>4. All other supporting equipment were powered separately from another main supply.</p> <p>5. The EUT was switched on and allowed to warm up to its normal operating condition.</p> <p>6. A scan was made on the NEUTRAL line (for AC mains) or Earth line (for DC power) over the required frequency range using an EMI test receiver.</p> <p>7. High peaks, relative to the limit line, The EMI test receiver was then tuned to the selected frequencies and the necessary measurements made with a receiver bandwidth setting of 10 kHz.</p> <p>8. Step 7 was then repeated for the LIVE line (for AC mains) or DC line (for DC power).</p>
Remark	
Result	<input checked="" type="checkbox"/> Pass <input type="checkbox"/> Fail

Test Data ☒ Yes ☐ N/A

Test Plot ☒ Yes (See below) ☐ N/A

**Test Mode : USB Mode**

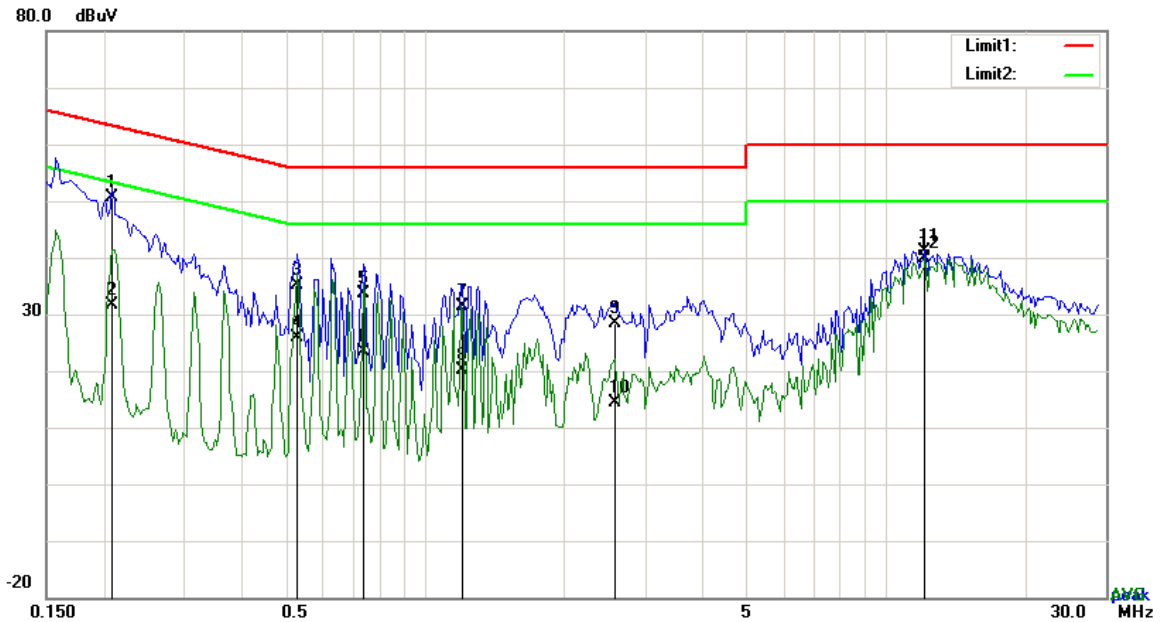


### Test Data

#### Phase Line Plot at 120Vac, 60Hz

No.	P/L	Frequency	Reading	Detector	Corrected	Result	Limit	Margin
		(MHz)	(dBuV)		(dB)	(dBuV)	(dBuV)	(dB)
1	L1	0.1617	38.86	QP	10.03	48.89	65.38	-16.49
2	L1	0.1617	26.90	AVG	10.03	36.93	55.38	-18.45
3	L1	0.2085	36.79	QP	10.03	46.82	63.26	-16.44
4	L1	0.2085	23.83	AVG	10.03	33.86	53.26	-19.40
5	L1	0.6180	22.08	QP	10.03	32.11	56.00	-23.89
6	L1	0.6180	12.38	AVG	10.03	22.41	46.00	-23.59
7	L1	1.1874	25.90	QP	10.03	35.93	56.00	-20.07
8	L1	1.1874	17.73	AVG	10.03	27.76	46.00	-18.24
9	L1	11.4669	33.82	QP	10.17	43.99	60.00	-16.01
10	L1	11.4669	27.93	AVG	10.17	38.10	50.00	-11.90
11	L1	20.9400	21.98	QP	10.32	32.30	60.00	-27.70
12	L1	20.9400	20.18	AVG	10.32	30.50	50.00	-19.50

<b>Test Mode:</b>	<b>USB Mode</b>
-------------------	-----------------

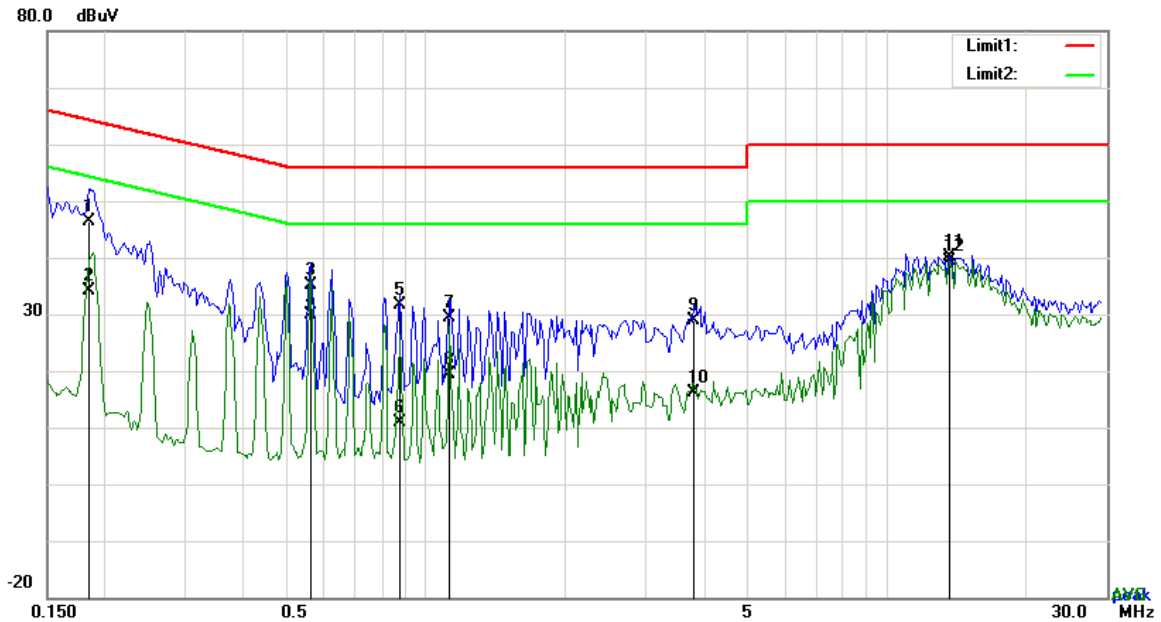


### Test Data

### Phase Neutral Plot at 120Vac, 60Hz

No.	P/L	Frequency	Reading	Detector	Corrected	Result	Limit	Margin
		(MHz)	(dBuV)		(dB}	(dBuV)	(dBuV)	(dB)
1	N	0.2085	40.56	QP	10.03	50.59	63.26	-12.67
2	N	0.2085	21.58	AVG	10.03	31.61	53.26	-21.65
3	N	0.5283	25.11	QP	10.03	35.14	56.00	-20.86
4	N	0.5283	15.83	AVG	10.03	25.86	46.00	-20.14
5	N	0.7350	23.53	QP	10.03	33.56	56.00	-22.44
6	N	0.7350	13.39	AVG	10.03	23.42	46.00	-22.58
7	N	1.2030	21.28	QP	10.03	31.31	56.00	-24.69
8	N	1.2030	10.16	AVG	10.03	20.19	46.00	-25.81
9	N	2.5797	18.40	QP	10.05	28.45	56.00	-27.55
10	N	2.5797	4.24	AVG	10.05	14.29	46.00	-31.71
11	N	12.1572	30.89	QP	10.18	41.07	60.00	-18.93
12	N	12.1572	29.71	AVG	10.18	39.89	50.00	-10.11

**Test Mode :** USB Mode

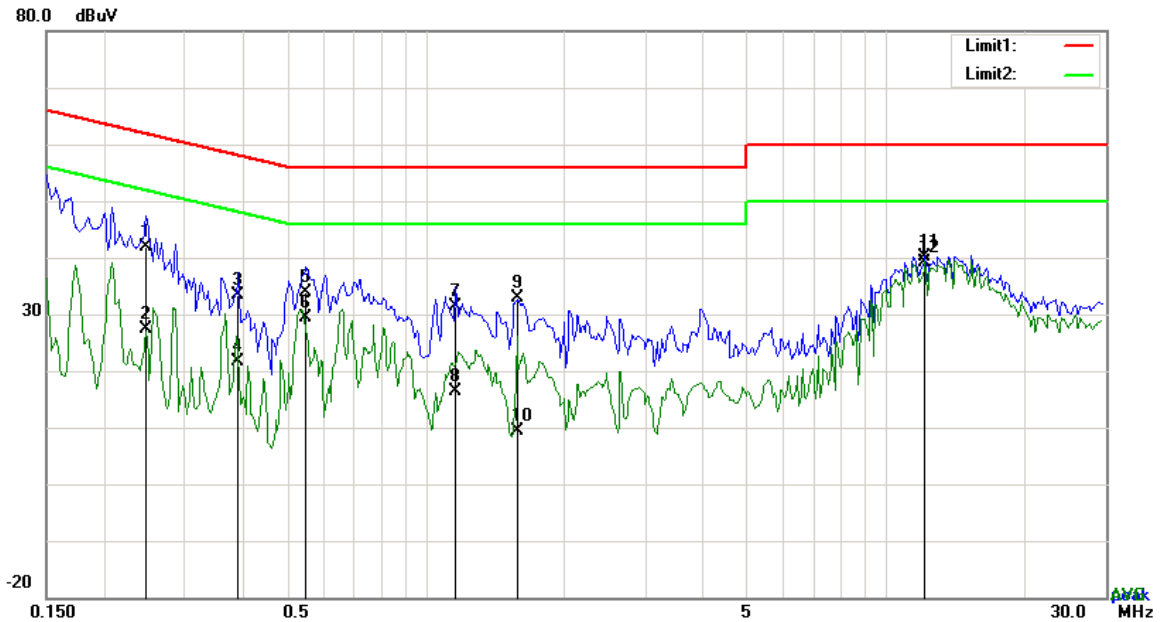


*Test Data*

**Phase Line Plot at 240Vac, 60Hz**

No.	P/L	Frequency	Reading	Detector	Corrected	Result	Limit	Margin
		(MHz)	(dBuV)		(dB}	(dBuV)	(dBuV)	(dB)
1	L1	0.1851	36.36	QP	10.02	46.38	64.25	-17.87
2	L1	0.1851	24.19	AVG	10.02	34.21	54.25	-20.04
3	L1	0.5595	25.11	QP	10.02	35.13	56.00	-20.87
4	L1	0.5595	19.78	AVG	10.02	29.80	46.00	-16.20
5	L1	0.8754	21.71	QP	10.03	31.74	56.00	-24.26
6	L1	0.8754	0.78	AVG	10.03	10.81	46.00	-35.19
7	L1	1.1211	19.29	QP	10.03	29.32	56.00	-26.68
8	L1	1.1211	9.26	AVG	10.03	19.29	46.00	-26.71
9	L1	3.7995	18.90	QP	10.06	28.96	56.00	-27.04
10	L1	3.7995	6.08	AVG	10.06	16.14	46.00	-29.86
11	L1	13.6392	29.99	QP	10.18	40.17	60.00	-19.83
12	L1	13.6392	29.28	AVG	10.18	39.46	50.00	-10.54

**Test Mode :** USB Mode



### Test Data

#### Phase Neutral Plot at 240Vac, 60Hz

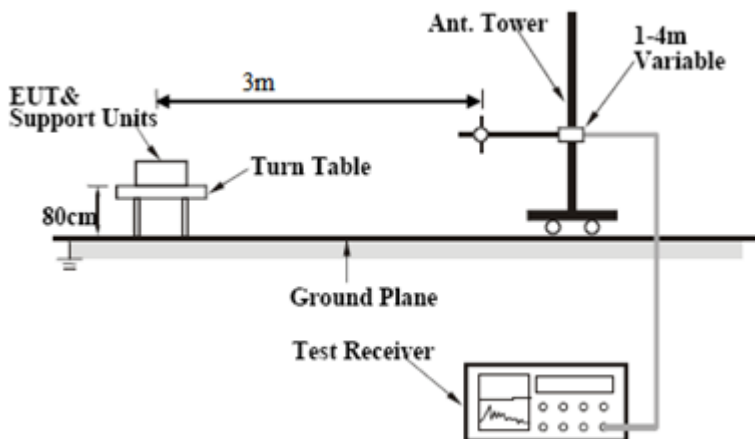
No.	P/L	Frequency	Reading	Detector	Corrected	Result	Limit	Margin
		(MHz)	(dBuV)		(dB)	(dBuV)	(dBuV)	(dB)
1	N	0.2475	31.89	QP	10.03	41.92	61.84	-19.92
2	N	0.2475	17.32	AVG	10.03	27.35	51.84	-24.49
3	N	0.3918	23.42	QP	10.03	33.45	58.03	-24.58
4	N	0.3918	11.54	AVG	10.03	21.57	48.03	-26.46
5	N	0.5517	23.81	QP	10.03	33.84	56.00	-22.16
6	N	0.5517	19.30	AVG	10.03	29.33	46.00	-16.67
7	N	1.1601	21.44	QP	10.03	31.47	56.00	-24.53
8	N	1.1601	6.28	AVG	10.03	16.31	46.00	-29.69
9	N	1.5774	22.88	QP	10.04	32.92	56.00	-23.08
10	N	1.5774	-0.63	AVG	10.04	9.41	46.00	-36.59
11	N	12.1572	30.00	QP	10.18	40.18	60.00	-19.82
12	N	12.1572	28.90	AVG	10.18	39.08	50.00	-10.92

## 6.2 Radiated Emissions

Temperature	23 °C
Relative Humidity	55%
Atmospheric Pressure	1012mbar
Test date :	September 04, 2017
Tested By :	Evans He

### Requirement(s):

Spec	Item	Requirement	Applicable	
47CFR§15.109(d)	a)	Except higher limit as specified elsewhere in other section, the emissions from the low-power radio-frequency devices shall not exceed the field strength levels specified in the following table and the level of any unwanted emissions shall not exceed the level of the fundamental emission. The tighter limit applies at the band edges	<div><input checked="" type="checkbox"/></div>	
		Frequency range (MHz)		Field Strength (µV/m)
		30 – 88		100
		88 – 216		150
		216 - 960		200
		Above 960		500

Test Setup	
------------	--

Procedure	<ol style="list-style-type: none"> <li>The EUT was switched on and allowed to warm up to its normal operating condition.</li> <li>The test was carried out at the selected frequency points obtained from the EUT characterization. Maximization of the emissions, was carried out by rotating the EUT, changing the antenna polarization, and adjusting the antenna height in the following manner: <ol style="list-style-type: none"> <li>Vertical or horizontal polarization (whichever gave the higher emission level</li> </ol> </li> </ol>
-----------	--

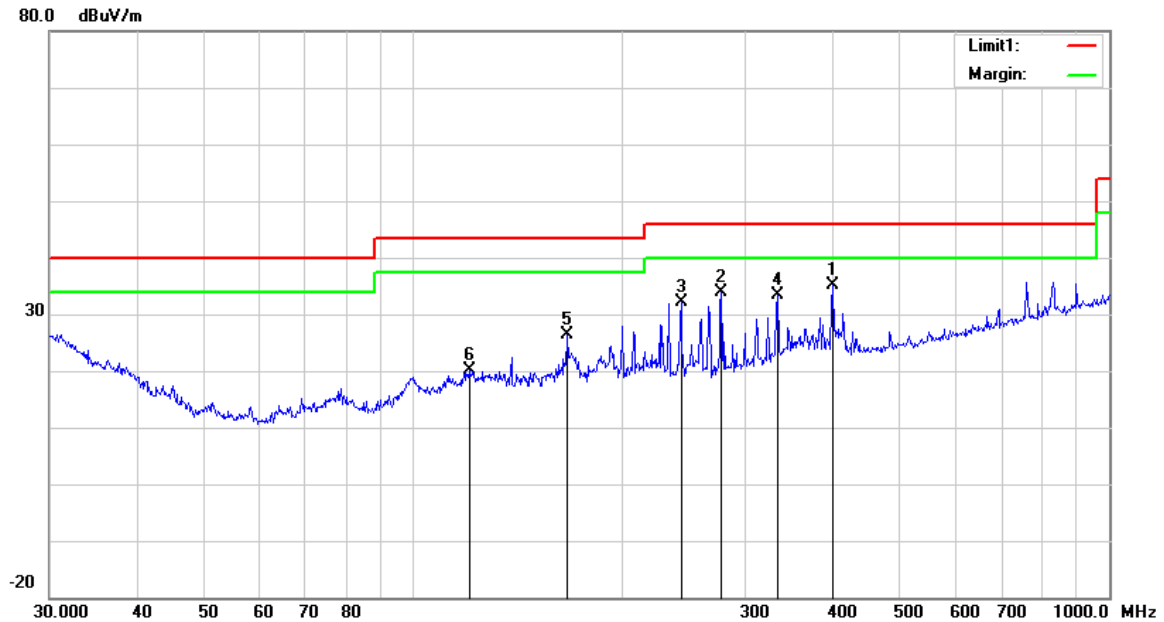
	<p>over a full rotation of the EUT) was chosen.</p> <p>b. The EUT was then rotated to the direction that gave the maximum emission.</p> <p>c. Finally, the antenna height was adjusted to the height that gave the maximum emission.</p> <p>3. The resolution bandwidth and video bandwidth of test receiver/spectrum analyzer is 120 kHz for Quasi Peak detection at frequency below 1GHz.</p> <p>4. The resolution bandwidth of test receiver/spectrum analyzer is 1MHz and video bandwidth is 3MHz with Peak detection for Peak measurement at frequency above 1GHz. The resolution bandwidth of test receiver/spectrum analyzer is 1MHz and the video bandwidth with Peak detection for Average Measurement as below at frequency above 1GHz. ■ 1 kHz (Duty cycle &lt; 98%) □ 10 Hz (Duty cycle &gt; 98%)</p> <p>5. Steps 2 and 3 were repeated for the next frequency point, until all selected frequency points were measured.</p>
Remark	
Result	<input checked="" type="checkbox"/> Pass <input type="checkbox"/> Fail

Test Data ☒ Yes ☐ N/A

Test Plot ☒ Yes (See below) ☐ N/A

Test Mode : USB Mode

**Below 1GHz**



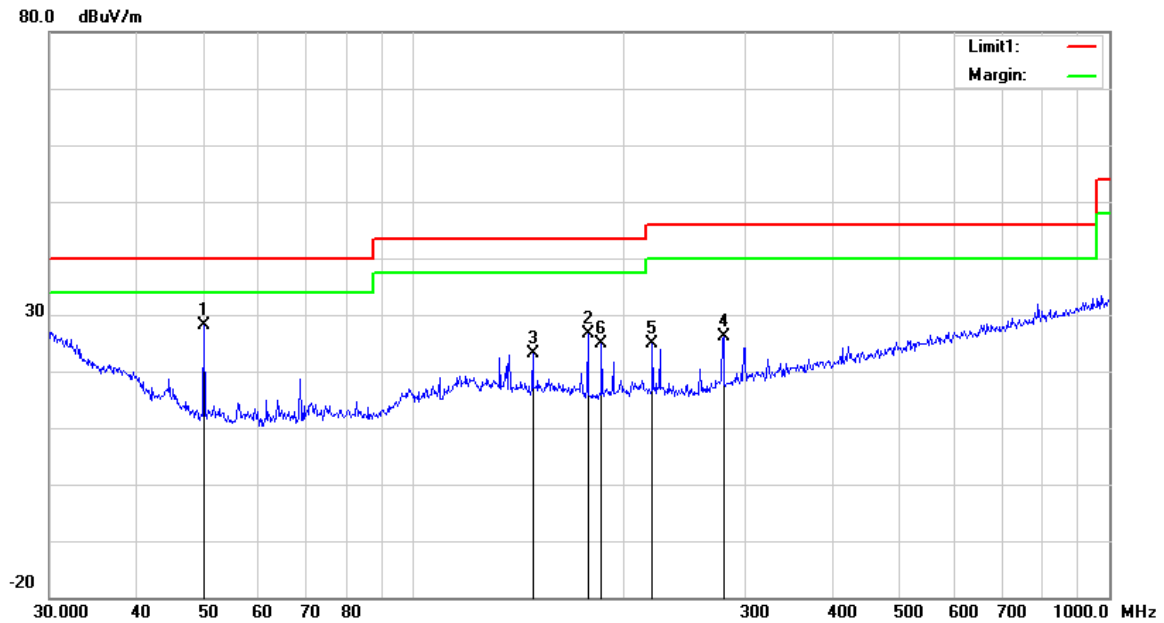
**Test Data**

**Horizontal Polarity Plot @3m**

No.	P/L	Frequency	Reading	Detector	Ant_F	PA_G	Cab_L	Result	Limit	Margin	Height	Degree
		(MHz)	(dBuV/m)		(dB/m)	(dB)	(dB)	(dBuV/m)	(dBuV/m)	(dB)	(cm)	(°)
1	H	400.4319	39.31	peak	15.71	22.01	2.01	35.02	46.00	-10.98	200	28
2	H	277.0935	41.77	peak	12.59	22.29	1.75	33.82	46.00	-12.18	100	125
3	H	242.5253	41.31	peak	11.50	22.30	1.68	32.19	46.00	-13.81	100	144
4	H	333.6867	39.40	peak	14.31	22.20	1.96	33.47	46.00	-12.53	100	49
5	H	166.6514	35.19	peak	12.07	22.26	1.37	26.37	43.50	-17.13	100	4
6	H	120.2766	27.46	peak	13.88	22.36	1.16	20.14	43.50	-23.36	100	214



## Below 1GHz



## Test Data

### Vertical Polarity Plot @3m

No.	P/L	Frequency	Reading	Detector	Ant_F	PA_G	Cab_L	Result	Limit	Margin	Height	Degree
		(MHz)	(dBuV/m)		(dB/m)	(dB)	(dB)	(dBuV/m)	(dBuV/m)	(dB)	(cm)	(°)
1	V	50.0566	41.25	peak	8.39	22.38	0.80	28.06	40.00	-11.94	100	356
2	V	178.1327	36.36	peak	11.15	22.25	1.36	26.62	43.50	-16.88	100	292
3	V	148.4410	31.46	peak	12.60	22.35	1.33	23.04	43.50	-20.46	200	286
4	V	279.0436	33.96	peak	12.68	22.29	1.75	26.10	46.00	-19.90	100	357
5	V	220.6171	33.78	peak	11.81	22.34	1.61	24.86	46.00	-21.14	100	338
6	V	186.4409	34.26	peak	11.35	22.29	1.48	24.80	43.50	-18.70	200	111

### *Above 1GHz*

Frequency (MHz)	Read_level (dBμV/m)	Azimuth	Height (cm)	Polarity (H/V)	Level (dBμV/m)	Factors (dB)	Limit (dBμV/m)	Margin (dB)	Detector (PK/AV)
1296.3	67.64	84	100	V	-19.38	48.26	74	-25.74	PK
1567.8	61.72	114	100	V	-18.21	43.51	74	-30.49	PK
2133.5	59.4	137	100	V	-14.64	44.76	74	-29.24	PK
1428.7	66.3	206	100	H	-18.95	47.35	74	-26.65	PK
1842.6	64.1	297	100	H	-15.98	48.12	74	-25.88	PK
2359.1	60.92	37	100	H	-13.97	46.95	74	-27.05	PK

*Note1: The highest frequency of the EUT is 2480 MHz, so the testing has been conformed to  $5 \times 2480 \text{ MHz} = 12,400 \text{ MHz}$ .*

*Note2: The frequency that above 3GHz is mainly from the environment noise.*

*Note3: The AV measurement performed, more than 20dB below limit so AV test data was not presented.*

## Annex A. TEST INSTRUMENT

Instrument	Model	Serial #	Cal Date	Cal Due	In use
<b>AC Line Conducted Emissions</b>					
EMI test receiver	ESCS30	8471241027	09/16/2016	09/15/2017	<input checked="" type="checkbox"/>
Line Impedance Stabilization Network	LI-125A	191106	09/24/2016	09/23/2017	<input checked="" type="checkbox"/>
Line Impedance Stabilization Network	LI-125A	191107	09/24/2016	09/23/2017	<input checked="" type="checkbox"/>
ISN	ISN T800	34373	09/24/2016	09/23/2017	<input type="checkbox"/>
Transient Limiter	LIT-153	531118	08/31/2016	08/30/2017	<input checked="" type="checkbox"/>
<b>Radiated Emissions</b>					
EMI test receiver	ESL6	100262	09/16/2016	09/15/2017	<input checked="" type="checkbox"/>
OPT 010 AMPLIFIER (0.1-1300MHz)	8447E	2727A02430	08/31/2016	08/30/2017	<input checked="" type="checkbox"/>
Microwave Preamplifier (1 ~ 26.5GHz)	8449B	3008A02402	03/23/2017	03/22/2018	<input checked="" type="checkbox"/>
Bilog Antenna (30MHz~6GHz)	JB6	A110712	09/20/2016	09/19/2017	<input checked="" type="checkbox"/>
Double Ridge Horn Antenna	AH-118	71259	09/23/2016	09/22/2017	<input checked="" type="checkbox"/>

## Annex B. EUT And Test Setup Photographs

### Annex B.i. Photograph: EUT External Photo

Whole Package View

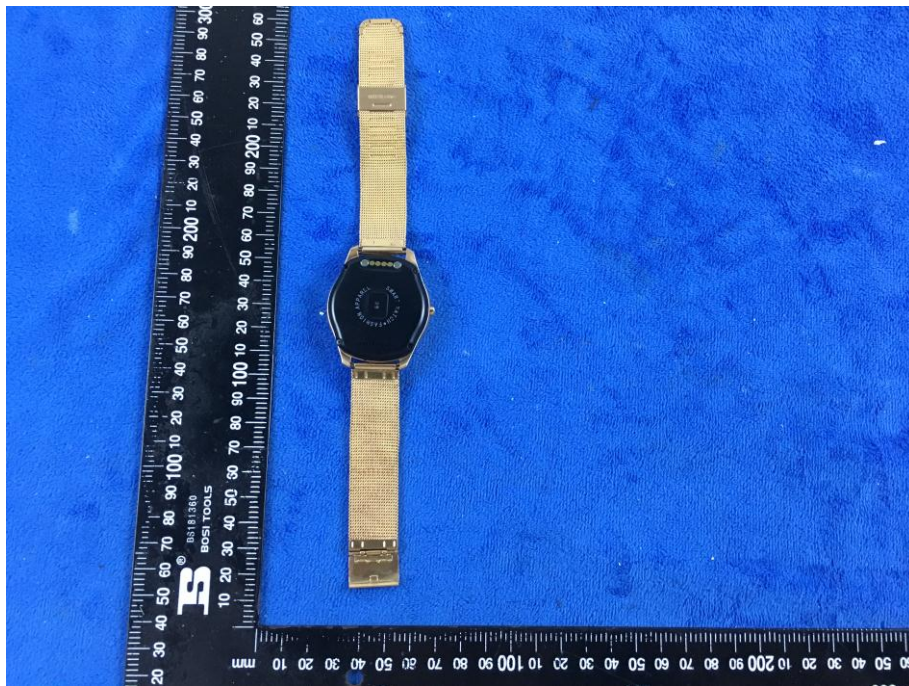


EUT - Front View





EUT - Rear View



EUT - Top View



EUT - Bottom View

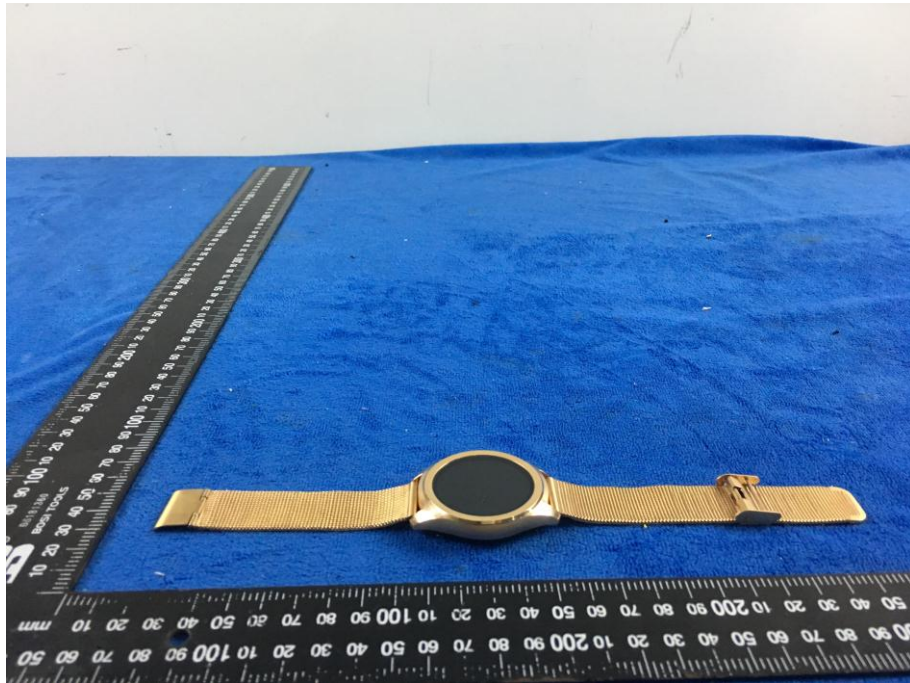


EUT - Left View



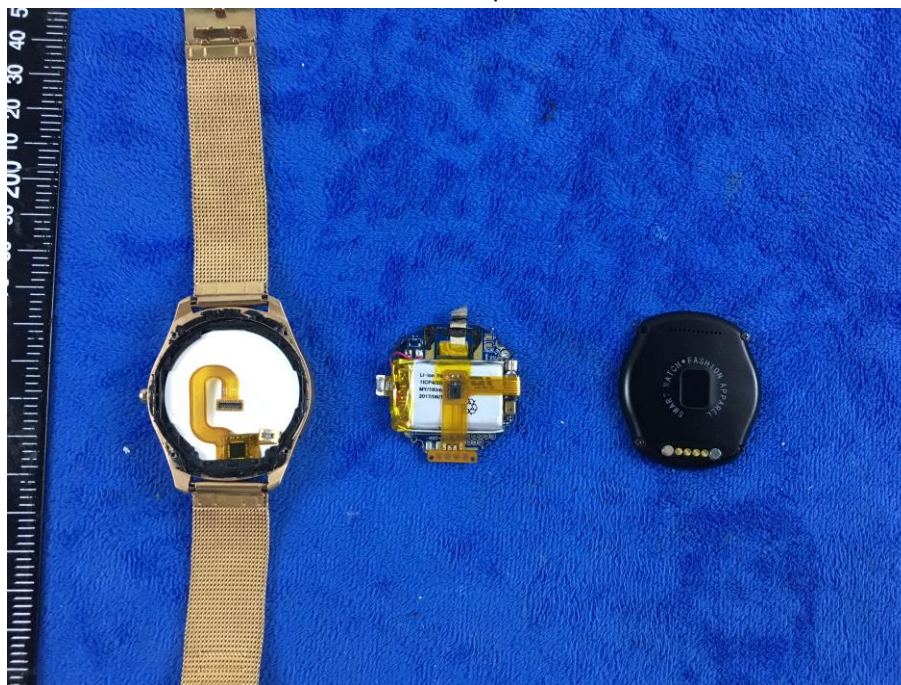


EUT - Right View

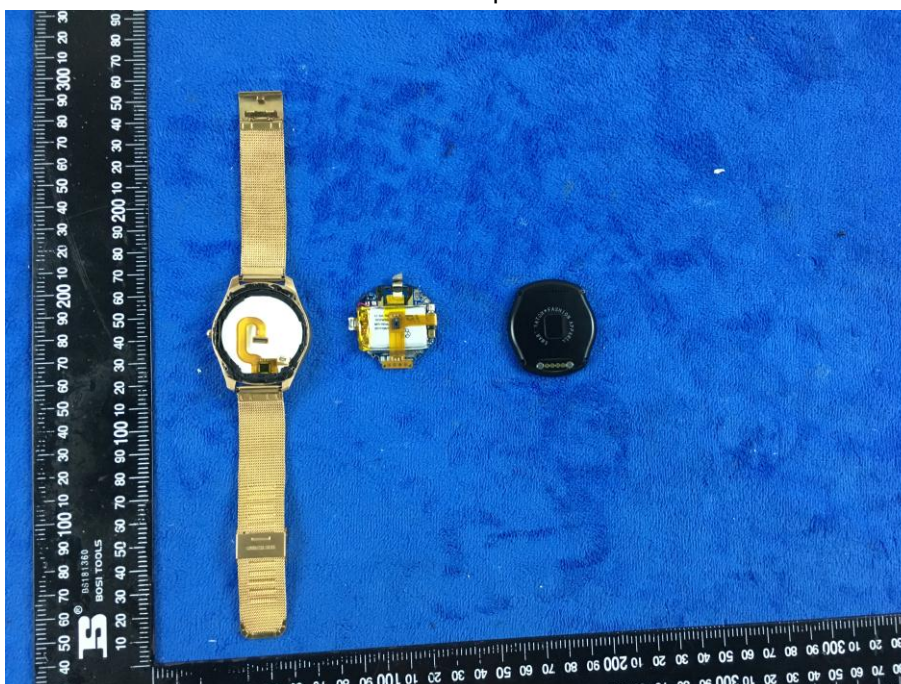


**Annex B.ii. Photograph: EUT Internal Photo**

Cover Off - Top View 1

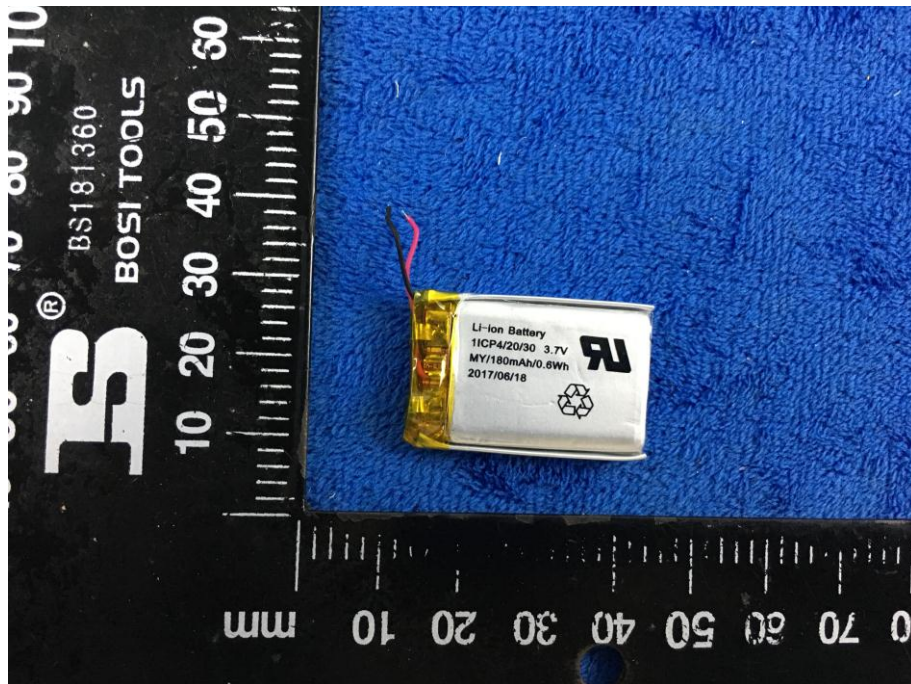


Cover Off - Top View 2

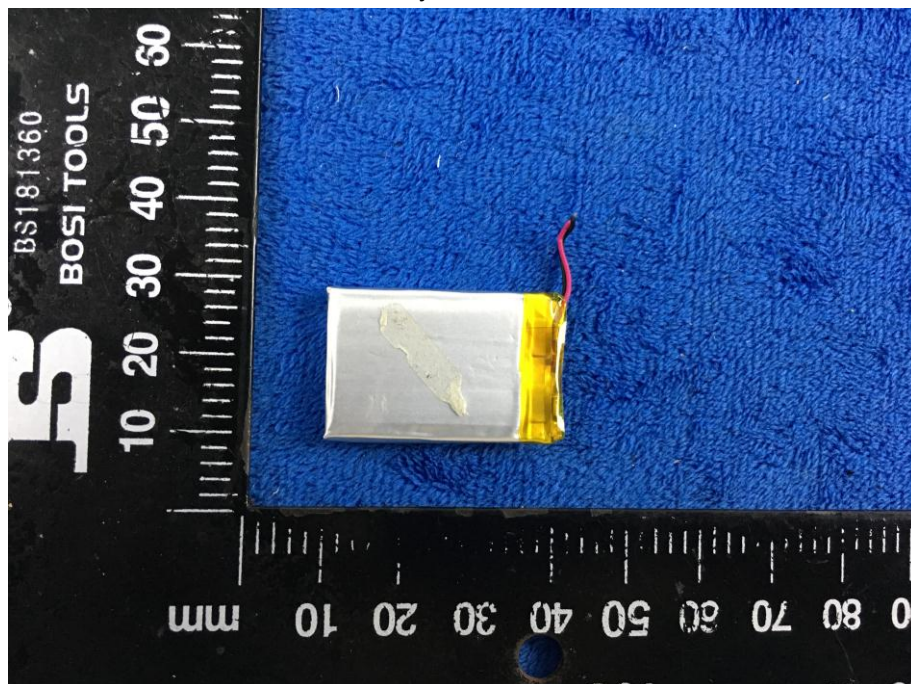




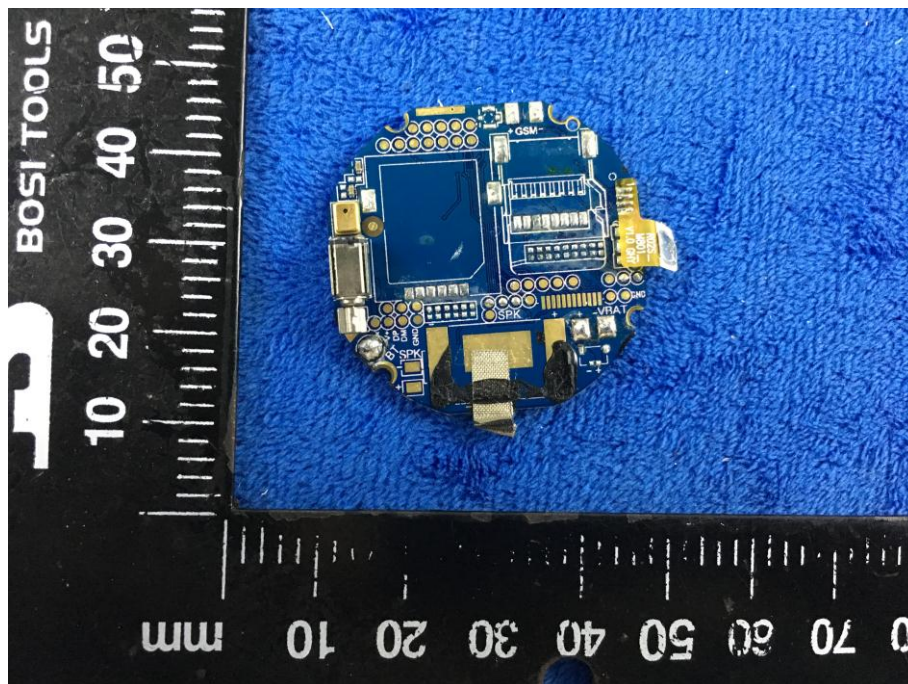
Battery - Front View



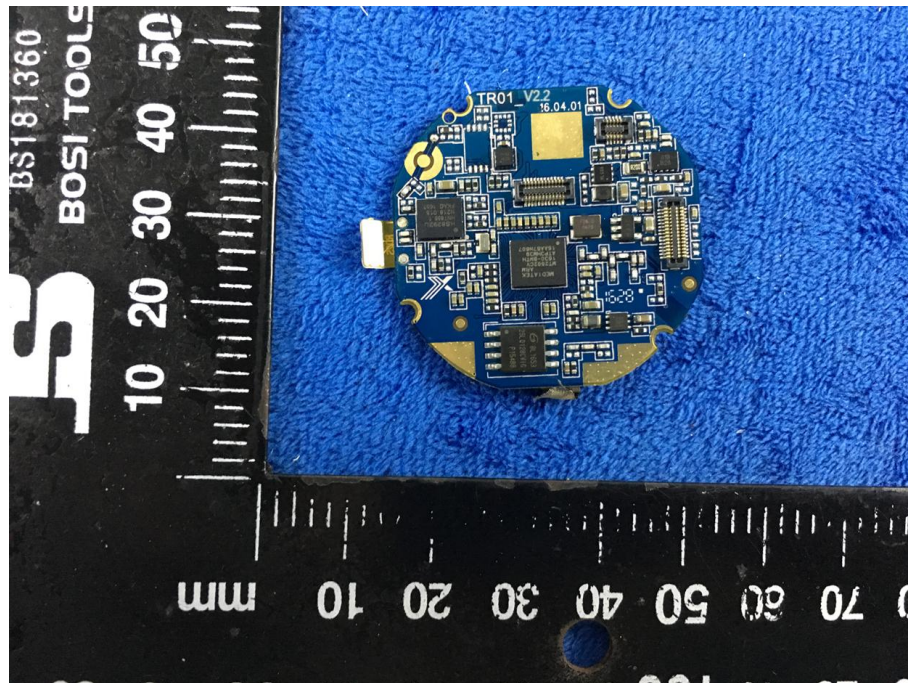
Battery - Rear View



Mainboard – Front View

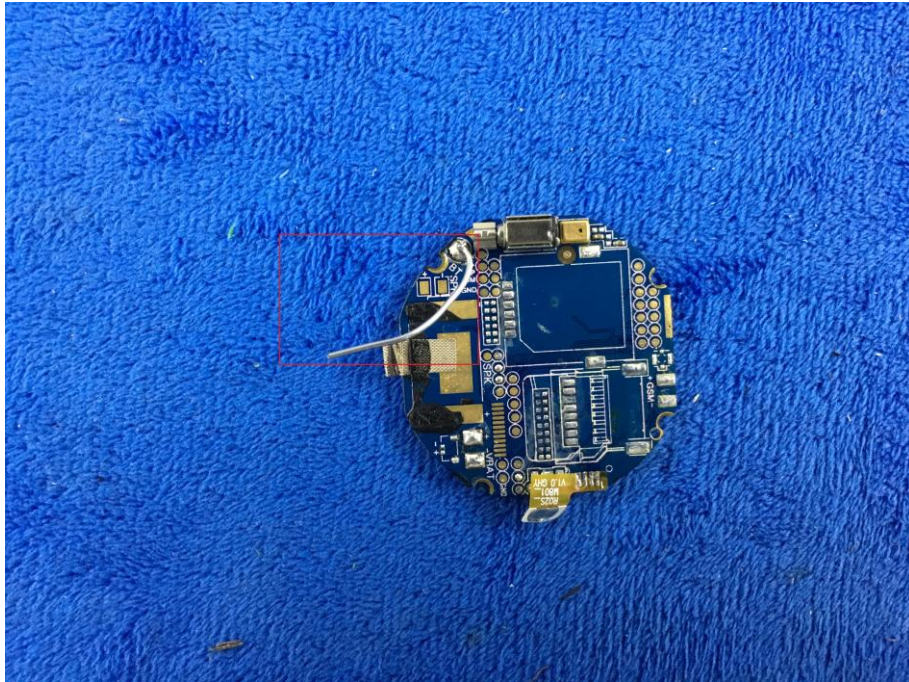


Mainboard – Rear View





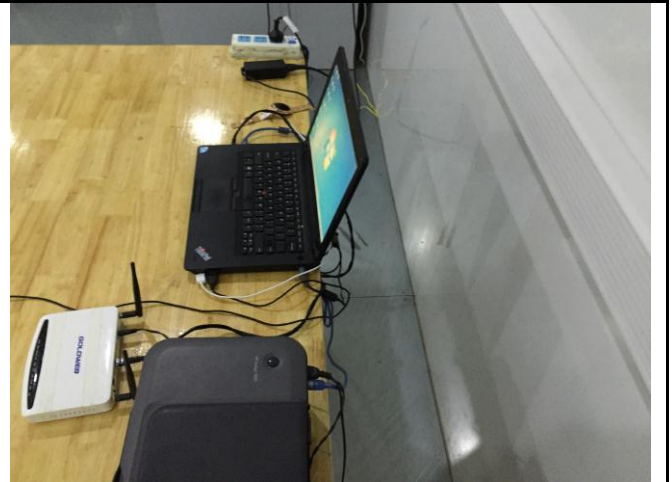
BT/BLE - Antenna View



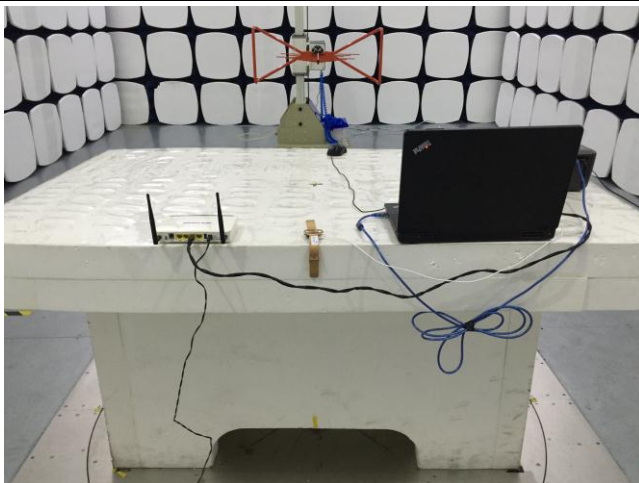
### Annex B.iii. Photograph: Test Setup Photo



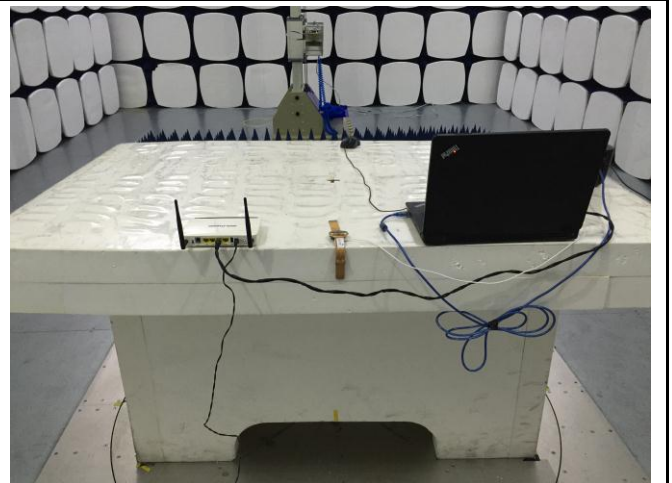
Conducted Emissions Test Setup – Front View



Conducted Emissions Test Setup – Side View



Radiated Emissions Test Setup Below 1GHz

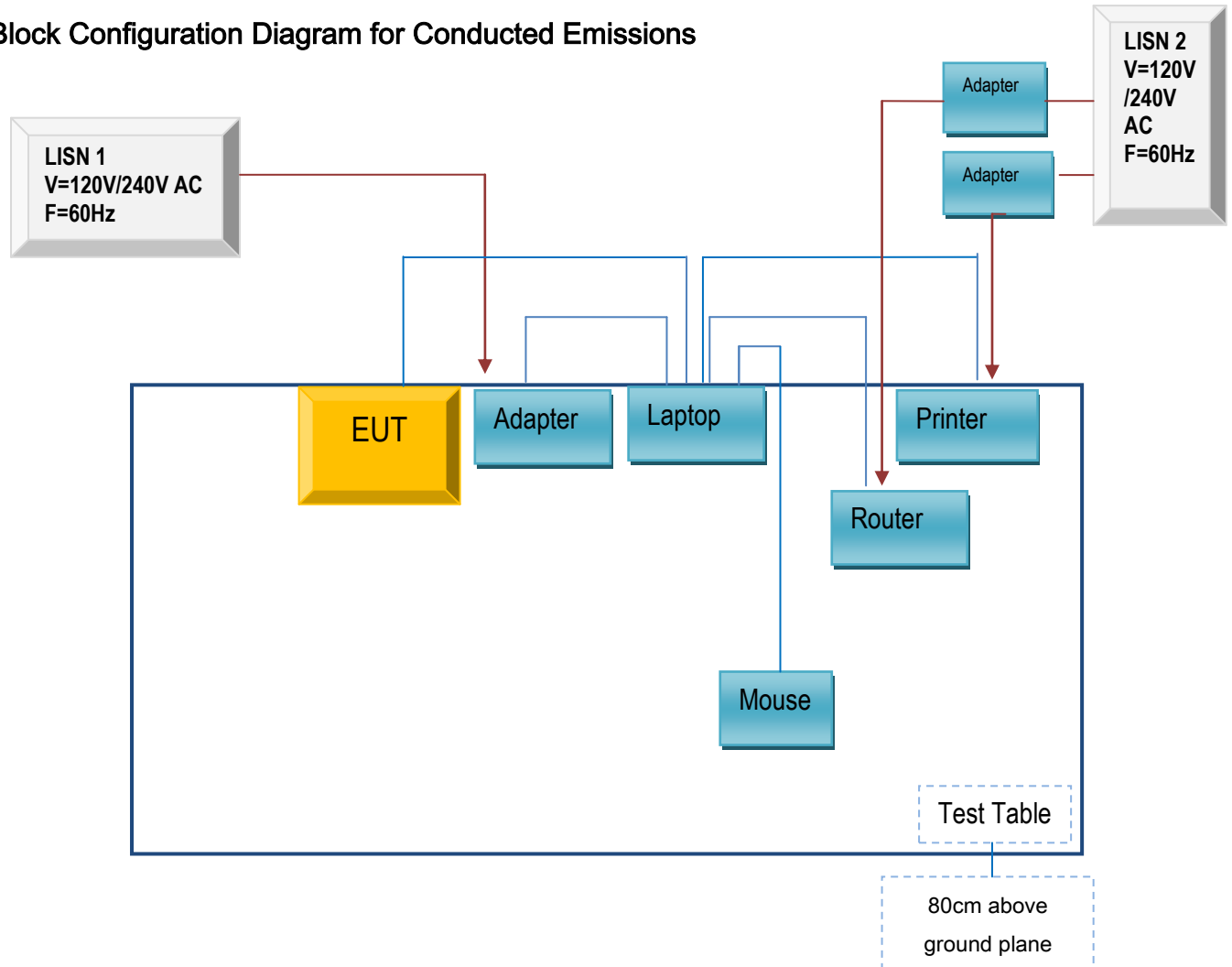


Radiated Emissions Test Setup Above 1GHz

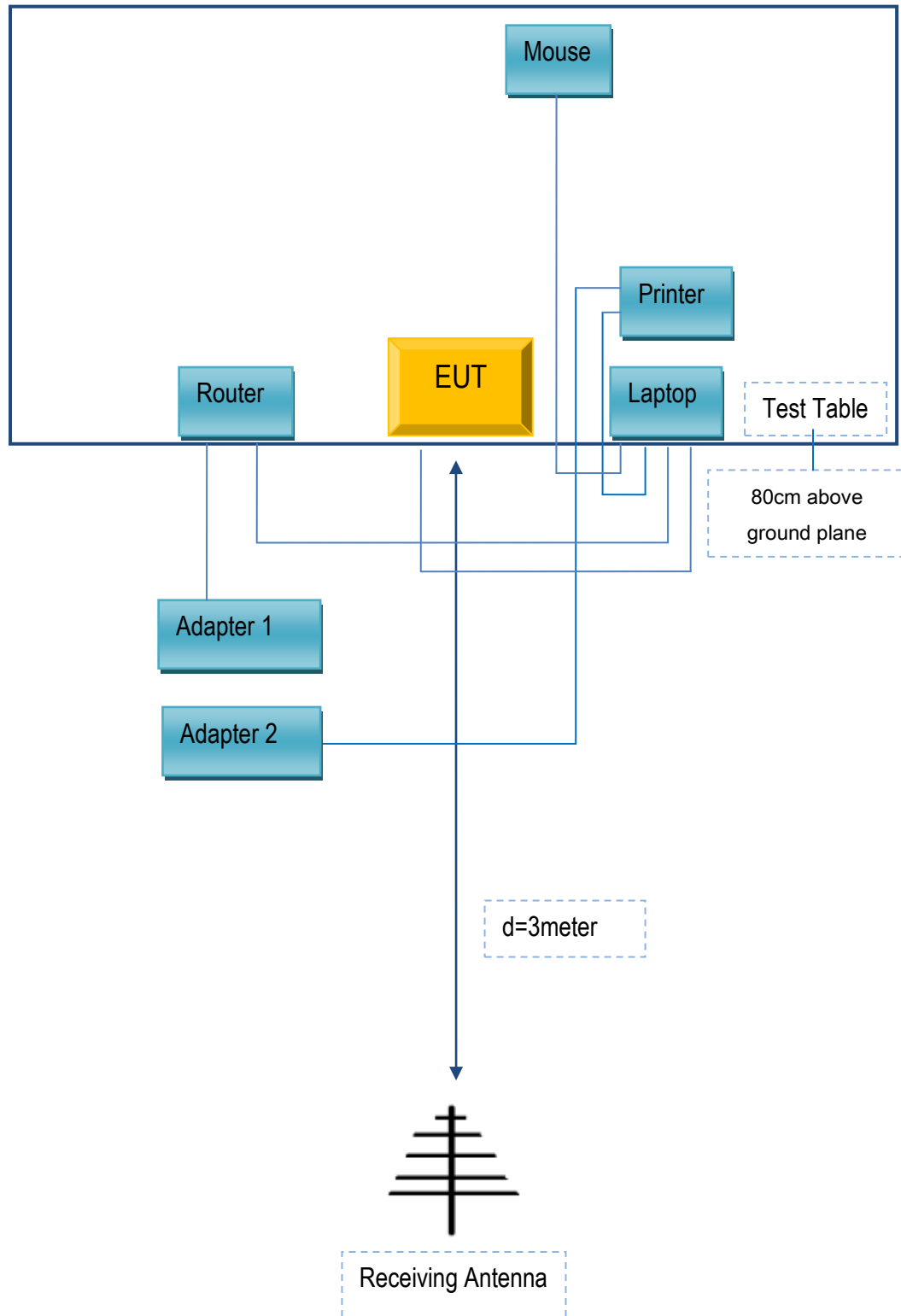
## Annex C. TEST SETUP AND SUPPORTING EQUIPMENT

### Annex C.ii. TEST SET UP BLOCK

#### Block Configuration Diagram for Conducted Emissions



## Block Configuration Diagram for Radiated Emissions



## **Annex C. ii. SUPPORTING EQUIPMENT DESCRIPTION**

The following is a description of supporting equipment and details of cables used with the EUT.

### **Supporting Equipment:**

Manufacturer	Equipment Description	Model	Serial No
Lenovo	Laptop	E40	LR-1EHRX
GOLDWEB	Router	R102	1202032094
Lenovo	AC Adapter	42T4416	21D9JU
HP	Printer	VCVRA-1003	CN36M19JWX
DELL	Mouse	E100	912NMTUT41481
BULL	Socket	GN-403	GN201203

### **Supporting Cable:**

Cable type	Shield Type	Ferrite Core	Length	Serial No
USB Cable	Un-shielding	No	2m	JX120051274
USB Cable	Un-shielding	No	2m	CBA3000AH0C1
RJ45 Cable	Un-shielding	No	2m	KX156327541
Router Power cable	Un-shielding	No	2m	13274630Z
Printer Power cable	Un-shielding	No	2m	127581031
Power Cable	Un-shielding	No	0.8m	GT211032
Earphone Cables	Un-shielding	No	0.5m	N/A

## Annex D. User Manual / Block Diagram / Schematics / Partlist

Please see the attachment



## Annex E. DECLARATION OF SIMILARITY

N/A