

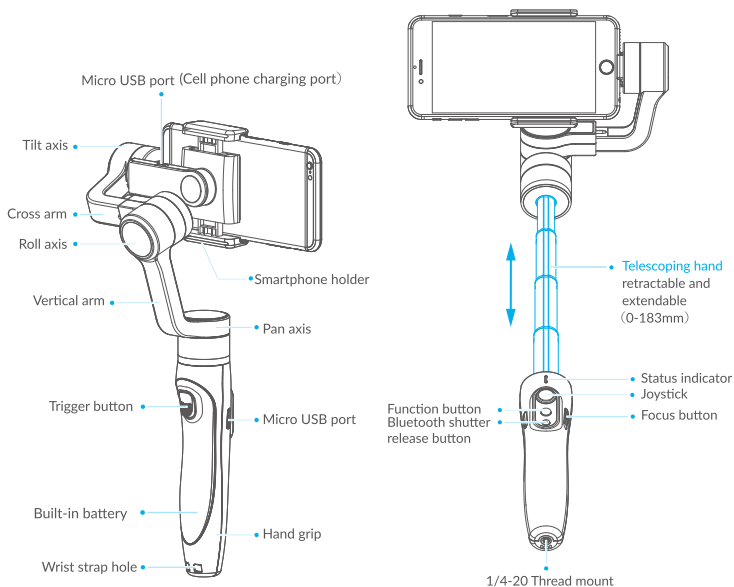
USER MANUAL

smovemobile.com

Product overview

1. Structure

Smartphone shown in illustrations is for reference only

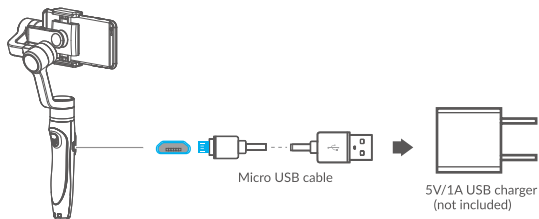


Operation guide

1. Gimbal charging

- Please fully charge the battery before powering on the gimbal for the first time

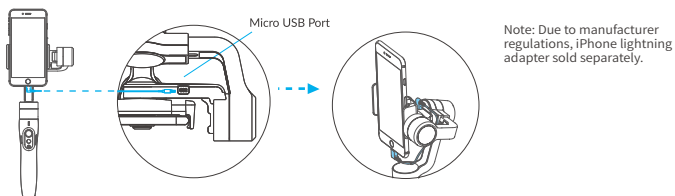
Charging with Micro USB cable Indicator is red in charging status, and becomes green when battery full.



- (1) Please install the smartphone before powering on the gimbal.
- (2) When not in use, turn off the gimbal and then remove the smartphone.

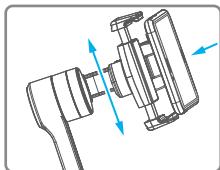
2. Smartphone charging (Optional)

Charge the phone via cable and choose the corresponding cable according to charging port.



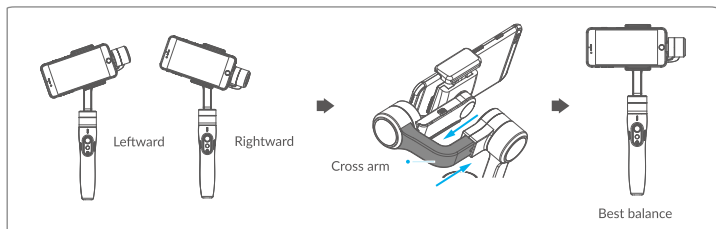
3. Insert smartphone

- It's recommended to remove your smartphone protective case.
- Smartphone holder width range : 57-84mm.



Place smartphone in holder so that the phone is snug against the back of the holder.

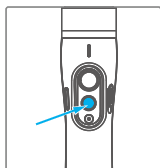
- If the smartphone is unbalanced after being mounted, refer to the following steps to make adjustment.



- (1) If smartphone tilts to the left, pull cross arm out to the right until phone is horizontal.
- (2) If smartphone tilts to the right, push cross arm into the left until phone is horizontal.

4. Power on / off

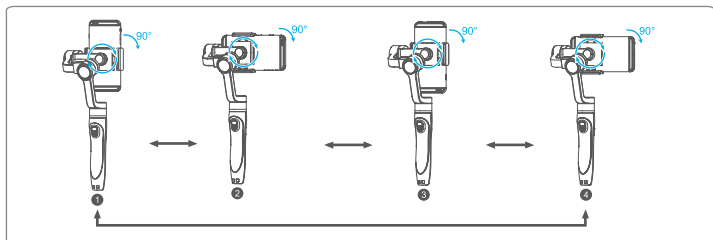
- Make sure the smartphone is secure before powering on the gimbal.
- When battery is low, the status indicator will blink red three times every 5 seconds. Please charge gimbal.



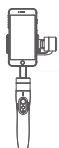
Power on: press and hold the function button until the status indicator turns green and gimbal beeps

Power off: press and hold the function button until the status indicator changes from a flashing red to a solid red light and gimbal beeps.

5. Smartphone rotation



Tip:



• Load weight:
100~200g



• Load weight:
≤130g

Modes and Functions

Operation method

Status Indicator Explanation

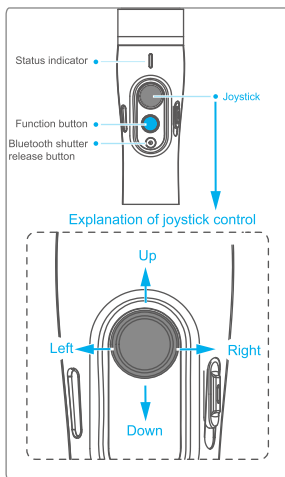
- The current mode of the gimbal can be identified by the indicator status.

Indicator status	Mode / Status
Blue light flashes once	Pan mode
Blue light flashes twice	Follow mode
Constant Blue light	Lock mode / gimbal initializing / motion control mode
Blue light keeps flashing	Initialization failure/ malfunction
Red light flashes three times	Low power
Red light keeps flashing	Gimbal powering off

Bluetooth shutter release button

By connecting bluetooth or SMOVE MOBILE App can operate as follow

Button	Mode / Indicator status
Single click	Photo / Status indicator flashes green once
Press & Hold	Video / Status indicator remains solid green during recording



Troubleshooting: if the gimbal fails to connect to the SMOVE MOBILE App power off the gimbal. Press and hold both the bluetooth shutter release button and the function button to reset the bluetooth connection.

Download App

1. Download App

iOS: "SMOVE MOBILE" App in iTunes App store.

Android: "SMOVE MOBILE" App in Google Play store.

- The firmware upgrade may occur manual operation function and the actual product features do not match. Please get the latest version manual on the official website.

Function button	Function	Explanation
Single click	Panning Mode / Lock Mode	Single tap to switch between panning mode and lock mode
Double clicks	Follow mode	In the follow mode, the joystick is pushed to the left / right, to push and control the angle is -30° ~ $+30^{\circ}$, push it up ward or down ward to realize pitching control.
Triple clicks	Switching camera lens	It needs to be used with SMOVE MOBILE APP
Four clicks	Motion Control mode	Both the panning and tilting directions can be rotated
Five clicks	Initialization	After the initialization succeeds or fails, you can click the function button to wake up the gimbal
Trigger button	Function	Explanation
Press & Hold	Temporary Lock	In the pan mode or follow mode, holding the trigger button temporarily locks panning and tilting until released
Double clicks	Reset to default	Centers the camera away from the user on all 3 axes (pan, tilt and roll) and switches back to the default pan mode
Focusing button	Function	Explanation
Sliding up-down	Adjust focus	Adjust field-of-view (FOV) (It needs to be used with SMOVE MOBILE App)

Modes

Pan mode(Default mode) ——The rolling and tilting direction are fixed, and the smartphone moves according to the hand movement direction of the user.

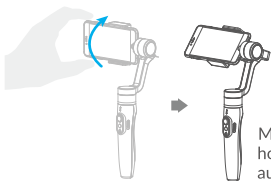
Follow mode ——The rolling direction is fixed, and the smartphone moves according to the hand movement direction of the user.

Lock mode——The orientation of the smartphone is fixed.

Reset——Return to pan mode, all to return to default.

Manual Lock

Smartphone can be manually positioned while in lock mode, follow mode or pan mode. Both the pan and tilt can be manually set.



Manually move smartphone to desired position, and hold for half a second. New tilt and/or pan positions are automatically saved.

Motion Control Mode

The gimbal can easily create constant speed moves by using the motion control mode. This mode can be used for recording both regular video and timelapse photography. For best results, attach gimbal to tripod, to keep it completely still.

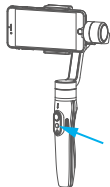
1. Set motion speed in SMOVE MOBILE App

To set the motion speed, connect to the SMOVE MOBILE App and select desired speed from the motion control option in the settings menu.

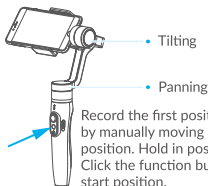
Motion control speed reference table

SMOVE MOBILE Rotation speed												
12 seconds / turn	18 seconds / turn	24 seconds / turn	30 seconds / turn	1 minute / turn	2 minutes / turn	4 minutes / turn	8 minutes / turn	15 minutes / turn	30 minutes / turn	1 hour /turn (default)	4 hours / turn	8 hours / turn

2. Enter motion control mode by clicking the function button 4 times

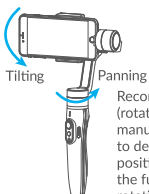


3. Set rotation start position



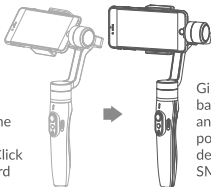
Record the first position (rotation start position) by manually moving smartphone to desired position. Hold in position for half a second. Click the function button to record rotation start position.

4. Set rotation end position



Record the second position (rotation end position) by manually moving smartphone to desired position. Hold in position for half a second. Click the function button to record rotation end position.

5. The gimbal is motion control from rotation start position to rotation end position



Gimbal will automatically move back to rotation start position and start moving to rotation end position at a constant speed as determined by user in the SMOVE MOBILE App.

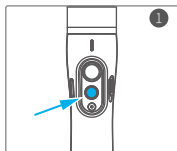
Exit operations:

1. Gimbal automatically exits motion control mode once move completes.
2. Click the function button to exit the motion control mode during automatic rotation and reset the gimbal.
3. Enter the motion control mode or motion control setting, double click the trigger button to exit the motion control mode and reset the gimbal.

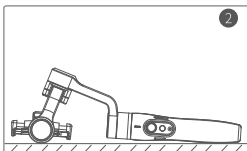
Gimbal Initialization

Initialize gimbal when:

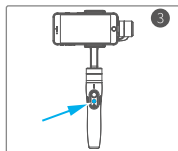
- (1) Smartphone fails to remain level.
- (2) Gimbal has not been used for a long period of time.
- (3) Gimbal is used in extreme temperature variations.



Click the function button five times. The motors will stop working. Status indicator turns solid blue.



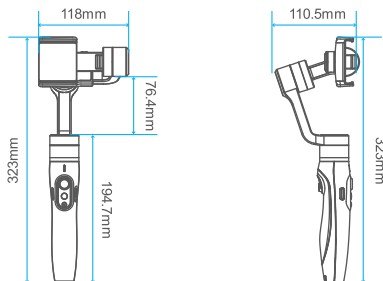
Place the gimbal on a flat, horizontal surface. The gimbal will automatically initialize after a few seconds detecting no movement. The blue light will flash three times to indicate end of initialization.



After the initialization is successful, click the function button to wake up.

Note: If the initialization is not successful, click the function button to wake up. Restart the initialization process.

Technical Specifications



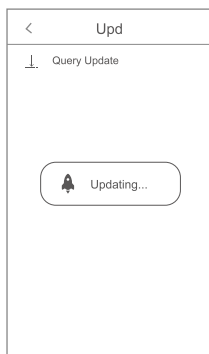
Max. tilting range	320°	Load weight	210g
Max. rolling range	320°		
Max. panning range	320°		
Operation time	Operation time in motion shooting: around 5 hours; operation time in normal shooting: around 10 hours		
Phone sizes	All size smartphones (3.5-6" screen)		
Weight	428g (not including smartphone)		

Firmware upgrade

Connect the gimbal to the SMOVE MOBILE App, to upgrade the firmware through the App



SMOVE MOBILE App



ATTENTION

Please install and use in accordance to the User Manual!

- Please charge the battery with the provided battery charger.
- Please install the smartphone securely before powering on the SMOVE stabilizer.
- Please keep the SMOVE stabilizer away from fire.
- You are solely responsible for all behaviors of purchase and use of the SMOVE products. SMOVE, nor any of its affiliates, are not liable nor responsible in any way for your use of the SMOVE stabilizer and SMOVE products.
- Prohibit any use for any illegal purchase. For any unknown and/or illegal sources of purchasing or using, we will not provide any service.
- SMOVE nor any of its affiliates assume zero liability for any risks related to or resulting from the debug and use of this product (including the direct, indirect or third-party losses).
- SMOVE reserves the right to amend this manual and the terms and conditions of use the SMOVE stabilizer and SMOVE products at any time.

WARNING!

Changes or modifications to this unit not expressly approved by the party responsible for compliance could void the user's authority to operate the equipment

ROHS

This product is in compliance with Directive 2011/65/EU of the European Parliament and of the Council of 8 June 2011, on the restriction of the use of certain hazardous substances in electrical equipment.

NOTE

This equipment has been tested and found to comply with the limits for a Class B digital device, pursuant to Part 15 of the FCC Rules. These limits are designed to provide reasonable protection against harmful interference in a residential installation. This equipment generates, uses and can radiate radio frequency energy and, if not installed and used in accordance with the instructions, may cause harmful interference to radio communications. However, there is no guarantee that interference will not occur in a particular installation. If this equipment does cause harmful interference to radio or television reception, which can be determined by turning the equipment off and on, the user is encouraged to try to correct the interference by one or more of the following measures:

- Reorient or relocate the receiving antenna.
- Increase the separation between the equipment and receiver.
- Connect the equipment into an outlet on a circuit different from that to which the receiver is connected.
- Consult the dealer or an experienced radio/TV technician for help.

This device complies with Part 15 of the FCC Rules. Operation is subject to the following two conditions:

- (1) This device may not cause harmful interference, and
- (2) This device must accept any interference received, including interference that may cause undesired operation.