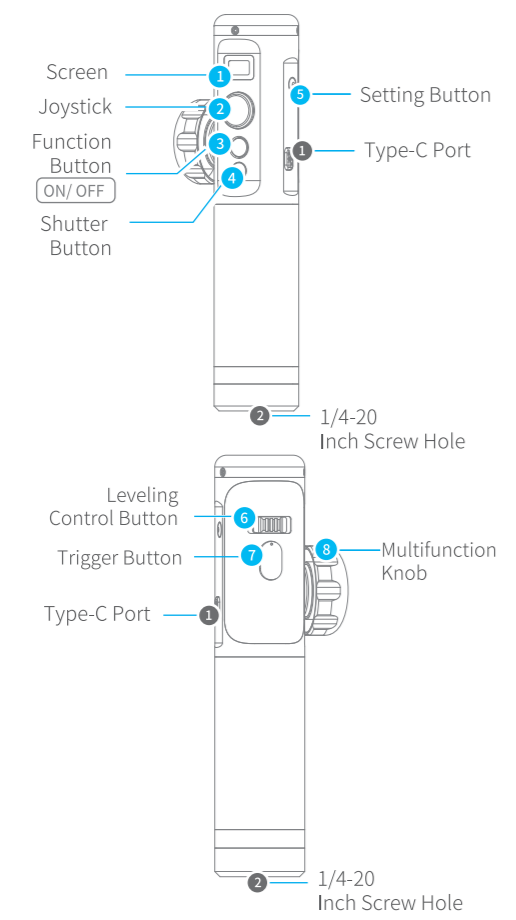


# Hyperlink Remote Controller

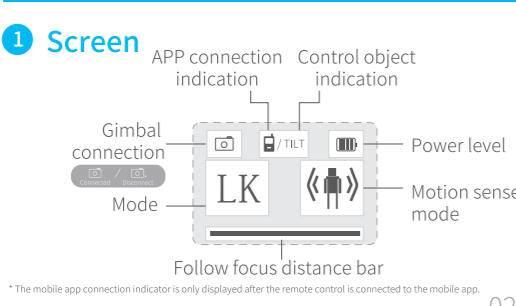
## Instructions

不印出

### Remote Controller Overview

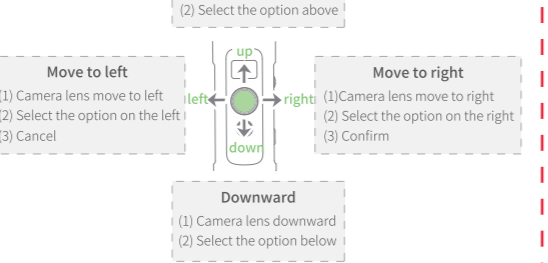


### Screen And Button Instruction



02

### 2 Joystick



### 3 Function button

Hold function button can power on/off, one/multi click can switch gimbal modes.  
\* Switching modes operation can be different from various gimbal mode.

### 4 Shutter button

After the remote control is successfully connected to the gimbal, you can control the device connected to the gimbal to shoot/record by clicking/long-pressing the capture button.  
\* Due to the different function of each type of gimble, whether record function can be implemented is based on the actual connected gimble.

### 5 Setting button

Single tap setting button can enter setting menu.

### 6 Leveling control button

After connected to the gimbal, scroll leveling control to adjust roll axis movements.  
\* Due to the different function of each type of gimbal, whether this function can be implemented is based on the actual connected gimble.

### 7 Trigger button

After connected to the gimbal, hold trigger button to enter motion-sense mode, release to exit.

### 8 Multifunction Knob

Press the knob under main screen can change the control object.

### 1 Type-C Port

Designed for charging the remote (input 5V/2A), and connect.  
\* Keep the port sealed with dust plug when not using.

### 2 1/4-20 Inch Screw Hole

For other accessories, such as the 1/4 inch tripod and extension bar and mobile phone clamp that come with the remote.

03

### Basic Operation

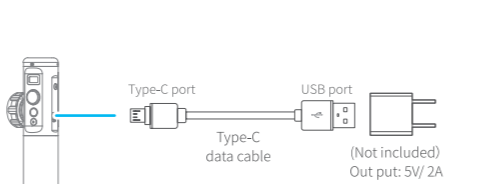
#### 1 Power on/off

Hold function button, display **FL**, release when main menu shows.

**Tips**  
(1) If power level is low, please charge right away.  
(2) power off then take out the battery if not using.

#### 2 Charging

Use Type-C cable to charge, as shown below:



**Tips**  
(1) Fully charge the remote before first use  
(2) Please do not charge with remote on!

### Connect/Disconnect Gimbal

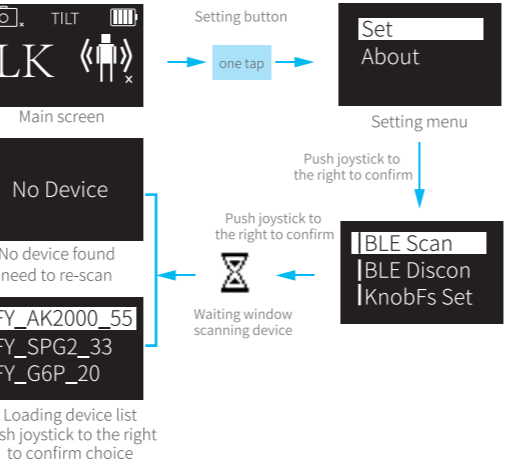
Under main screen, click setting button to enter menu, choose Bluetooth scan and find gimbal, or disconnect with gimbal.

In addition to manually disconnecting the Bluetooth connection, when the remote control and the gimbal are restarted or the Bluetooth connection is abnormally disconnected, the recently connected device is automatically reconnected.

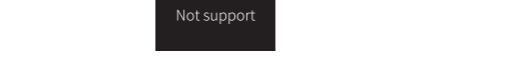
#### 1 Connection

If the remote is not connected with any device, tap setting button to enter setting menu and do the connection below.

04



If the device is not supported will display:

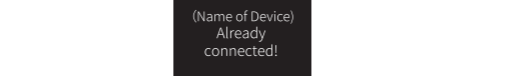


Choose another device to connect. After choosing will enter waiting window, wait and results will show:

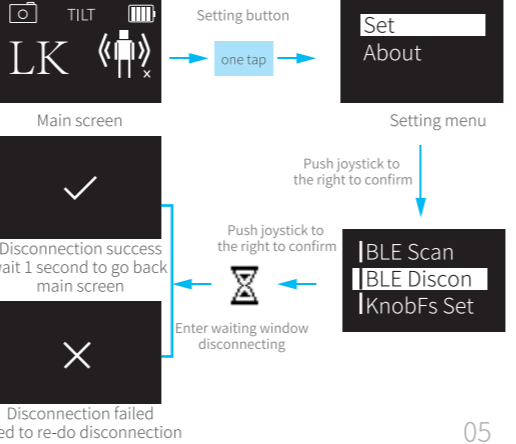


#### 2 Disconnect

Scanning device while connected, this window will pop up:



If the remote is connected to a device, Click setting button to enter setting menu and proceed disconnection:

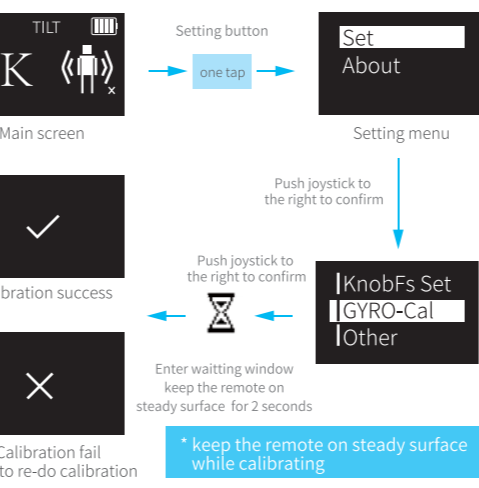


05

不印出

### Gyroscope Calibration

Gyroscope calibration is needed when first use or display remote not leveled:



press setting button or push joystick to the right to stop calibrating if needed.

### Screen Guide

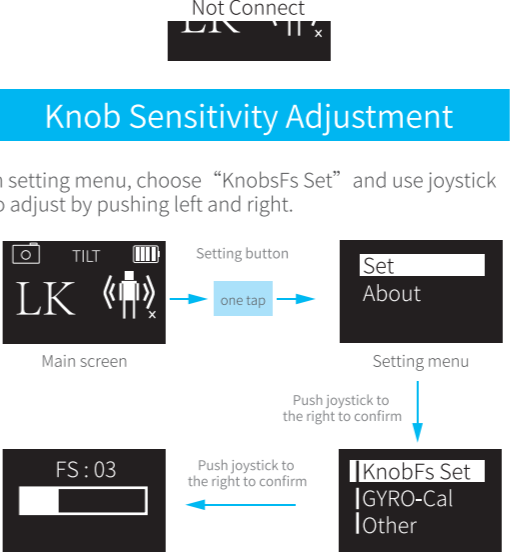
Screen icon	Mode/Status
HF	Pan follow mode
AF	All follow
LK	Lock mode
TF	Pan and tilt follow mode
*HFR	Pan and roll follow mode
*LKR	Lock and roll follow mode
*TFR	Pan/tilt and roll follow mode
🔋	Battery level
📱	APP connection
📷/📹	Gimbal connected/not connected
👤/👤	Motion sense mode on/off

\*HFR, LKR, TFR mode can only be changed on gimbal, remote is displaying only for these mode.

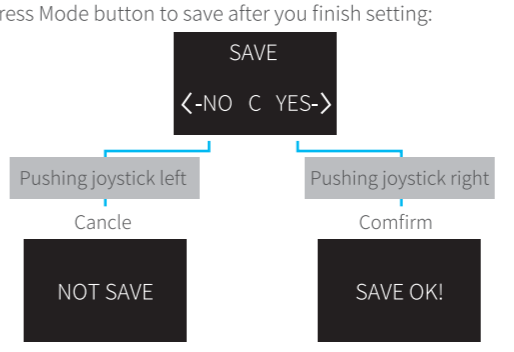
06

### Knob Sensitivity Adjustment

In setting menu, choose "KnobFs Set" and use joystick to adjust by pushing left and right.



Press Mode button to save after you finish setting:



\* Tap mode button under confirm window to go back setting, one tap setting button under setting window to save temporarily and go back to main screen, resets after reboot.

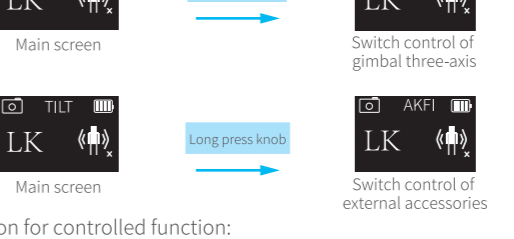
### Controlled Function

When you need to change the control object of the remote control, you can press the knob to operate. Single-pressing the knob can switch the control of the tilt axis/roll axis/pan axis of the gimbal, press and hold the knob to switch the control of the gimbal three-axis/external accessory device.

07

### Motion Sense Mode

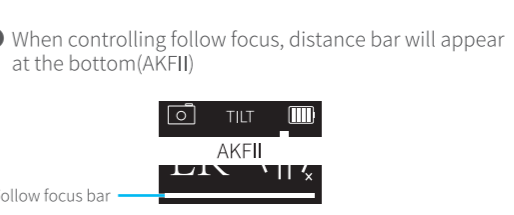
Hold trigger button to enter motion sense mode when connected with gimbal, Pan axis and Tilt axis will follow remote movement.



ICON	Controlled function
TILT	Tilt Axis
ROLL	Roll Axis
YAW	Pan Axis
AKFI	Servo Follow Focus
AKFI	Brushless Follow Focus

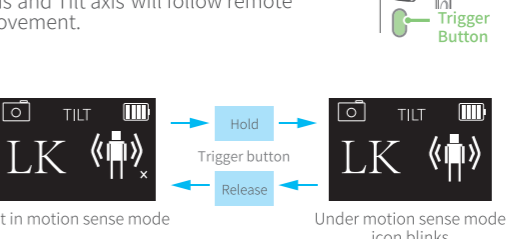
\* If the current device does not support the control of this object, the object will not be displayed on the screen. If the subsequent product update adds controllable external accessory device, the actual experience will prevail without prior notice.

Switch controlled function to control:  
● Use 4-way joysticks and knob to control movements when controlling three axis (TILT/ROLL/YAW)  
● When controlling follow focus, distance bar will appear at the bottom (AKFI)

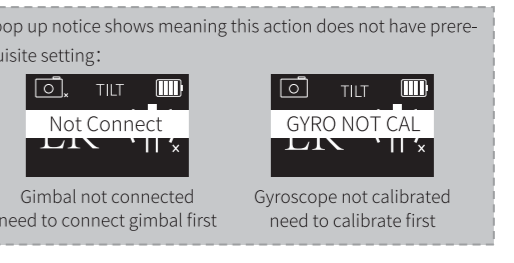
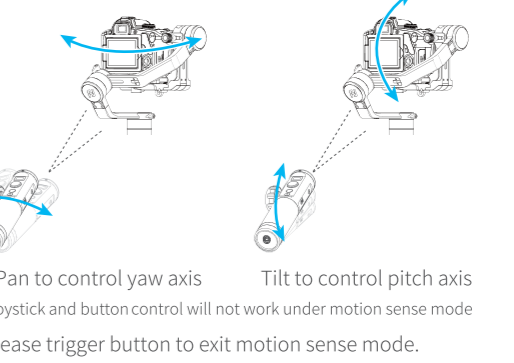


### Firmware update

Remote can be updated through Feiyu On App:



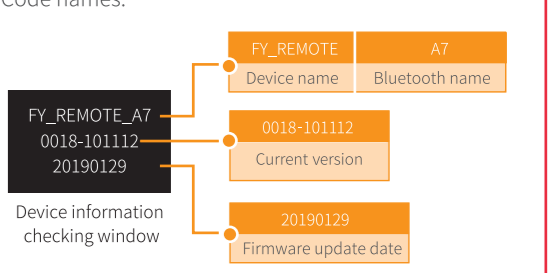
08



### Device Information

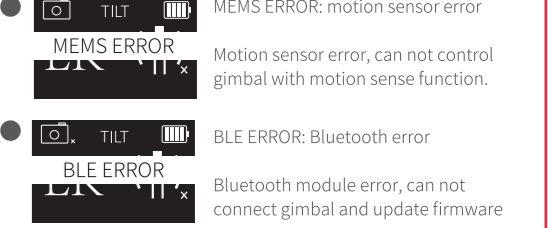
To check device information, tap setting button to enter menu and choose **About** icon, push right to check info.

09



### Device Error Information

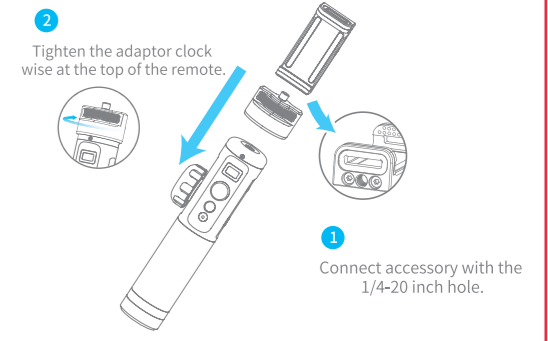
pop up window will display when encounter error:



When cases from above happens, please contact our support department for repair or exchange.

### Accessories Installation

The adaptor included can support 1/4-20 inch screw hole accessories, install guide down below:



All screw holes on the remote can be used as an extension port, add any suitable accessories as needed.

**FCC WARNING**  
This device complies with Part 15 of the FCC rules. Operation is subject to the following two conditions:  
1) This device may not cause harmful interference, and  
2) This device must accept any interference received, including interference that may cause undesired operation.  
Note: changes or modifications not expressly approved by the party responsible for compliance could void your authority to operate the equipment.  
Resistor Exposure Statement  
The device has been evaluated to meet general RF exposure requirement.  
The device can be used in portable exposure condition without restriction.

10