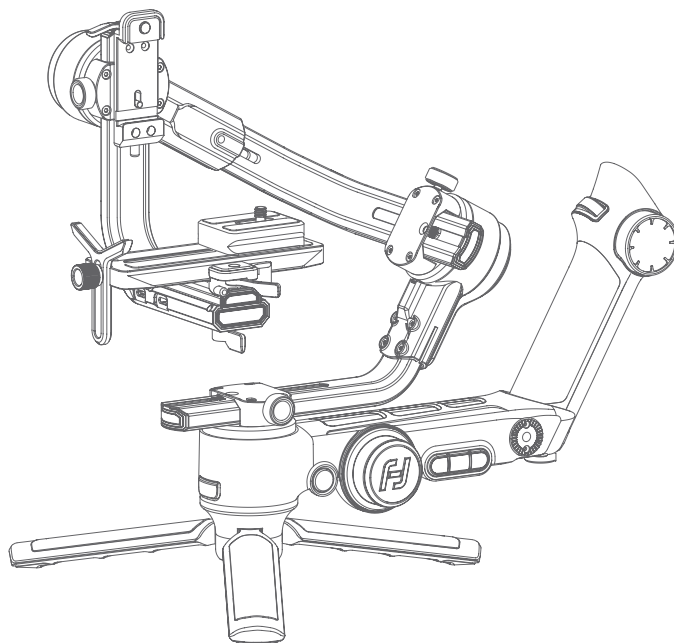


SCORP Pro

Quick Start Guide V.1.0

EN CN DE FR ES IT

Tutorial Videos



User manual

Scan the QR code to get the latest user manual or download it from the official website.

<https://www.feiyu-tech.com/feiyu-scorp-pro/>



User manual

Download the App

Scan the QR code to download the app, or search for "Feiyu SCORP" in the App Store or Google Play.

* Requires iOS 9.0 or above, Android 6.0 or above.



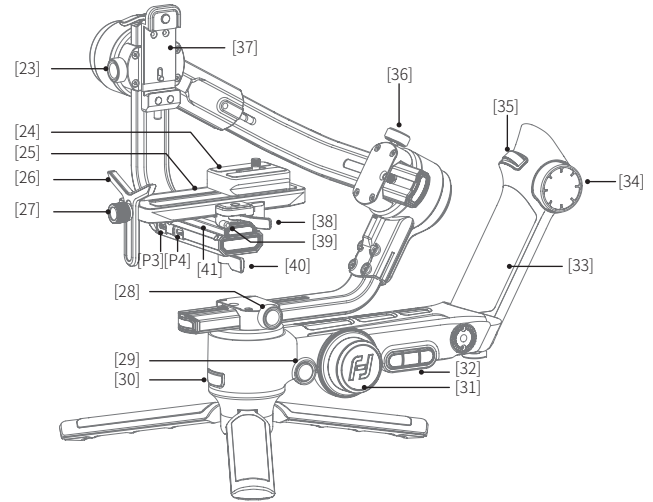
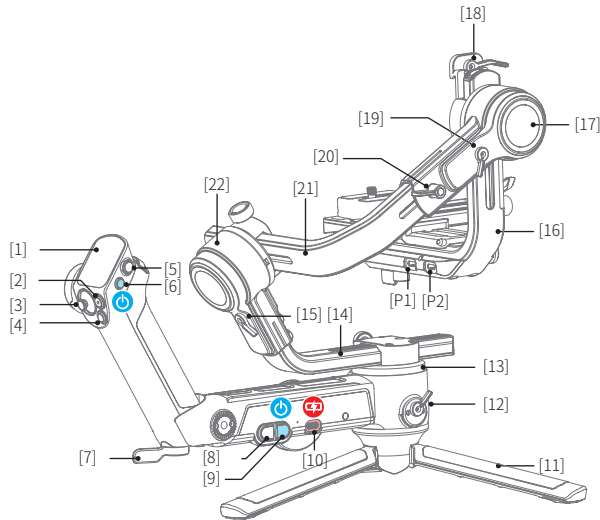
iOS



Android

1. Overview

* Not include camera.

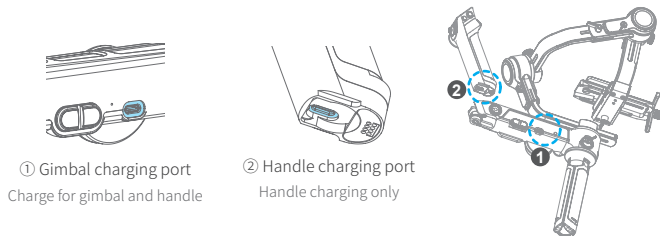


- | | | |
|---------------------------|---|---------------------------------------|
| [1] Touch Screen | [18] Vertical quick release plate safety lock | [33] Remote control handle |
| [2] Shutter button | [19] Tilt lock | [34] Multifunction knob (Handle knob) |
| [3] Joystick | [20] Cross arm extending position knob | [35] Focusing wheel |
| [4] Handle mode button | [21] Cross arm | [36] Cross arm lock knob |
| [5] Customizable button | [22] Roll axis | [37] Vertical mounting plate |
| [6] Handle power button | [23] Slide arm lock knob | [38] Quick release plate safety lock |
| [7] Handle lock | [24] Camera backing base | [39] Anti-drop column |
| [8] Gimbal mode button | [25] Quick release plate | [40] Slider lock |
| [9] Gimbal power button | [26] Lens holder | [41] Fixed plate slider |
| [10] Type-C charging port | [27] Lens holder screw | [P1] Camera control port |
| [11] Tripod | [28] Vertical arm lock knob | [P2] Image transmission port |
| [12] Pan lock | [29] Knob function switching button | [P3] Extension port 1 |
| [13] Pan axis | [30] Trigger button | [P4] Extension port 2 |
| [14] Vertical arm | [31] Multifunction knob (Main knob) | |
| [15] Roll lock | [32] A/B/C button (Record Mark points) | |
| [16] Slide arm | | |
| [17] Tilt axis | | |

2. Getting started

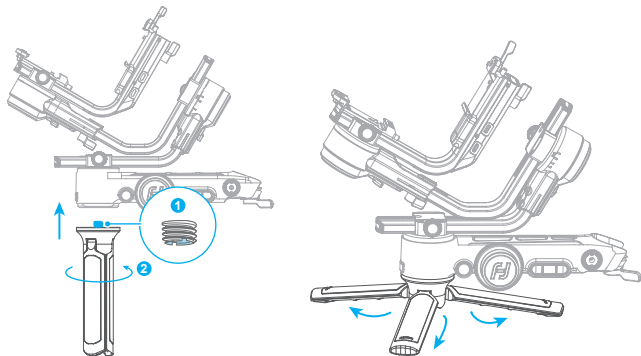
2.1 Charging

Please fully charge the battery before power on the gimbal for the first time. Charging with USB2.0 to Type-C cable, supports quick charge.



2.2 Install the tripod

Install the 3/8 - 1/4 inch thread ① insert on the 1/4 inch screw which is on the top of the tripod (The thread insert is factory mounted). Mount the tripod ② to the bottom of the gimbal, then unfold the tripod and place the gimbal on a flat surface.

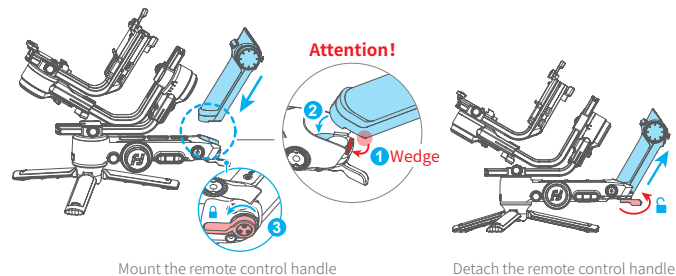


EN

2.3 Installer la poignée de télécommande

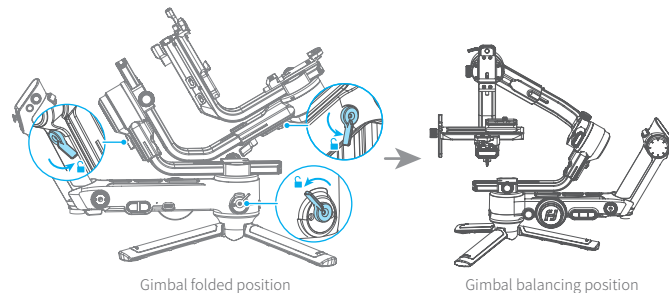
When install the handle, please wedge the buckle ①, then push down the handle from ②, until the handle lock ③ is engaged, then toggle the handle lock lever to the locked position to finish the installation.

When detach the handle, please toggle the handle lock lever to the unlocked position, and pull up the handle.



2.4 Adjust the gimbal position to gimbal balancing position

The gimbal is folded by default, please toggle the tilt lock, roll lock, and pan lock levers to the unlocked position and adjust the gimbal position to gimbal balancing position, and then toggle the three locks to the locked position.

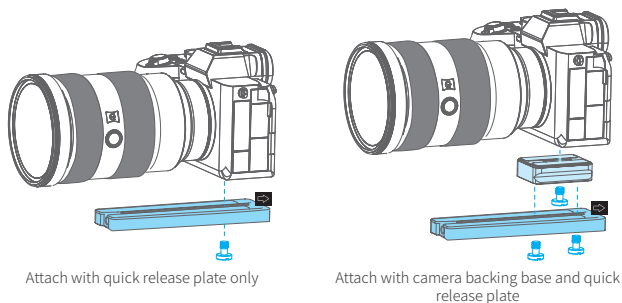


3. Mounting the Camera

Before mounting the camera, make sure the camera is ready for shooting (Install the camera lens, and the lens cover should be removed, the memory card and battery needs to be inserted to the camera, and battery is fully charged), complete all the steps which mentioned in chapter "2. Getting started" and the gimbal is adjusted to **gimbal balancing position**. Make sure the gimbal is powered off or in sleep mode before mounting the camera.

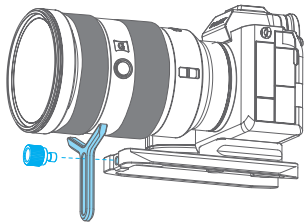
3.1 Attach the quick release plate and camera backing base(Optional)

Attach the quick release plate to camera by tightening the screw.
User can choose to attach the camera backing base according to need (For example, when using a long or heavy lens). Attach the camera backing base to camera, then attach it to quick release plate by tightening 2 screws.



3.2 Install lens holder (Optional)

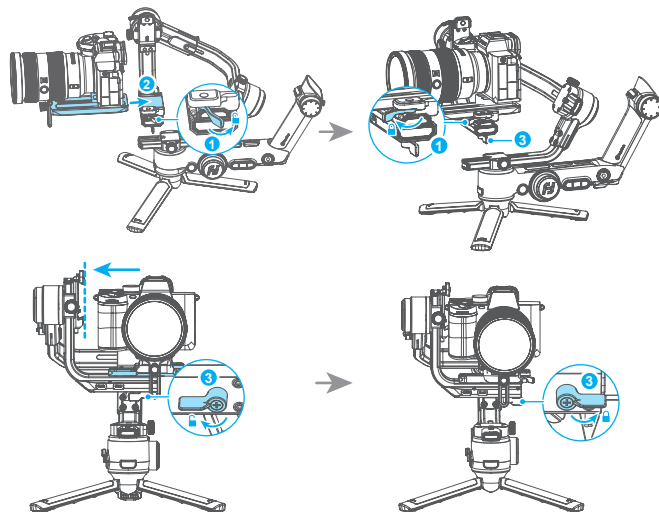
Install the lens holder on the quick release plate as needed, the rubber of the lens holder must be directly under the lens. It is recommended to use the lens holder when using a long or heavy lens.



3.3 Mount camera on gimbal

Horizontal mounting

Unlock the quick release plate safety lock ①, push the plate with the mounted camera into the slot ② in direction of arrow, lock the safety lock ① once the camera is roughly balanced. It is recommended to push the camera against the tilt axis. Unlock the slider lock ③ to move the camera left or right according to camera's width, then lock the slider lock ③.



Remove: Unlock the quick release plate safety lock ①, remove the quick release plate while pressing anti-drop column ④.

