



SCORP

3-Axis Stabilized Handheld Gimbal for Camera

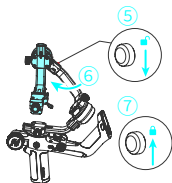
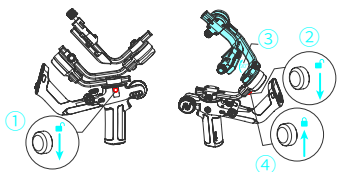
Quick Start Guide

EN V1.0

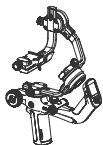
■ Quick Experience

Step 1: Unlock and lock

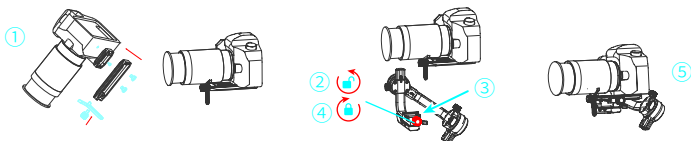
Stored lock status



Balance lock status

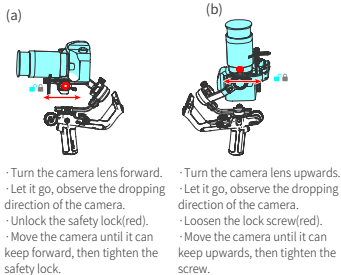


Step 2: Camera installation

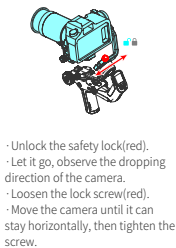


Step 3: Gimbal balancing

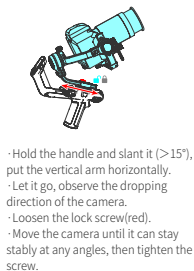
(1)Balance tilt axis



(2)Balance roll axis



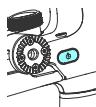
(3)Balance pan axis



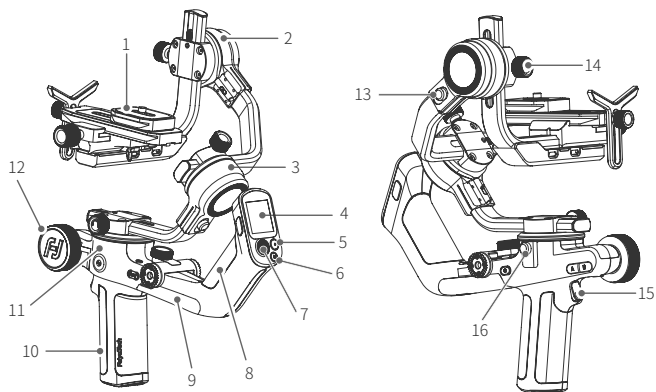
Step 4: Power ON/OFF

Check before powering on: Gimbal has enough energy, all the position locks have been unlocked safety lock, lock screw have been tightened. Camera is ready to shoot. (The lens cover should be removed from the camera and the memory card and battery needs to be inserted to the camera to complete all the connections.)

Long press power button, release the button until it shows LOGO on display.



■ Overview



1. quick release plate for camera
2. Tilt axis motor
3. Roll axis motor
4. Touch screen
5. Shutter Button

6. Mode button
7. Joystick
8. Versatile arm
9. kickstand
10. Handle

11. Pan axis motor
12. Multifunction knob
13. Tilt lock
14. Sliding arm lock screw
15. Trigger button
16. Shutter button

* This product does not include the camera.

■ Charging

 Please fully charge the battery before power on the gimbal for the first time.

Open the USB rubber cover. Connect the USB 2.0 AM to USB-C MALE cable to charge. Quick charge is available.

■ Download the Feiyu ON App

Scan the QR code to download the app, or search for "Feiyu ON" in the App Store or Google Play.

* Requires iOS 9.0 or above, Android 6.0 or above.



iOS Version



Android Version

■ Official Social Media



Facebook



Youtube



Instagram



Twitter

Guilin Feiyu Technology Incorporated Company

For more information, please visit our official website www.feiyu-tech.com

E-mail: support@feiyu-tech.com Tel: +86 773 2320865

Due to software and hardware improvements, your actual product might differ from the descriptions and pictures in this user manual. You can get the latest user manual from the official website.

FCC Statement

This device complies with Part 15 of the FCC Rules. Operation is subject to the following two conditions: (1) This device may not cause harmful interference, and (2) this device must accept any interference received, including interference that may cause undesired operation.

NOTE: This equipment has been tested and found to comply with the limits for a Class B digital device, pursuant to Part 15 of the FCC Rules. These limits are designed to provide reasonable protection against harmful interference in a residential installation. This equipment generates uses and can radiate radio frequency energy and, if not installed and used in accordance with the instructions, may cause harmful interference to radio communications. However, there is no guarantee that interference will not occur in a particular installation. If this equipment does cause harmful interference to radio or television reception, which can be determined by turning the equipment off and on, the user is encouraged to try to correct the interference by one of the following measures:

- Reorient or relocate the receiving antenna.
- Increase the separation between the equipment and receiver.
- Connect the equipment into an outlet on a circuit different from that to which the receiver is connected.
- Consult the dealer or an experienced radio/TV technician for help.

WARNING: Any changes or modifications not expressly approved by the party responsible for compliance could void the user's authority to operate this equipment.

The device must not be co-located or operating in conjunction with any other antenna or transmitter.

Notice:When charging, other functions cannot be used