

深圳市亿圣邦科技有限公司 样品承认书

SPECIFICATION FOR APPROVAL

公司名称 (客户填写): 东莞市艾普达科技有限公司
物料代码 (客户填写): _____
规格型号 (客户填写): N1457
承认日期 (客户填写): _____
供应商名称 (SLK填写): 深圳市亿圣邦科技有限公司
供应商规格型号 (SLK填写): WIFIMAIN:SLK-APD-3828-R-230IV-B
WIFIAUX:SLK-APD-3628-M-265IV-G

承 认 签 章

供 应 商 承 认 (SLK 填写栏)			东莞市艾普达科技有限公司		
工 程 师	审 核	批 准	工 程 师	审 核	批 准
陈仕联	黄震	林美财			
盖章签署		盖章签署			
日 期	2023-6-15	日 期			
批示: <input type="checkbox"/> 接受 <input type="checkbox"/> 有条件接受					
备注 (客户填写):					

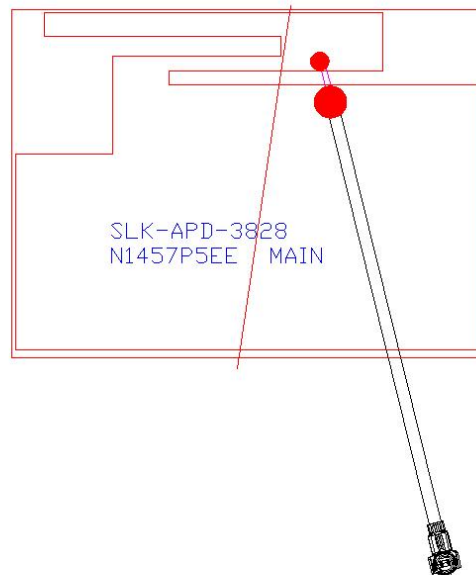
供应商名称: 深圳市亿圣邦科技有限公司
供应商地址: 东莞市塘厦镇蛟乙塘银园街 5 号厂房 2 楼
电 话: 0769-82553115 传 真: 0769-82553116

WIFIMAIN Antenna (3828)

1. Explanation of Product number :

S L K - A P D - 3 8 2 8 - R - 2 3 0 I V - B

1 2 3 4 5



Product Code:

(1) Customer:

APD: 艾普达

(2) Project:

3828: SLK-3828(WIFIMAIN antenna)

(3) Welding Position

R:Right

(4) Cable Length:

230IV: 230*0.81MM四代端子

(5)Cable Color

B:Black

2. Features

*Stable and reliable in performances

*Compact size

*RoHS compliance

3. Applications

- * IEEE802.11 (a/b/g/n)
- * Hand-held devices when WIFI (802.11 a/b/g/n) functions are needed

4. Description

Holy bond's FPC antenna series are specially designed for WIFI (802.11 a/b/g/n) applications. Based on Holy bond's proprietary design and processes, this FPC antenna has excellent stability and sensitivity to consistently provide high signal reception efficiency.

5. Electrical Specifications

5-1

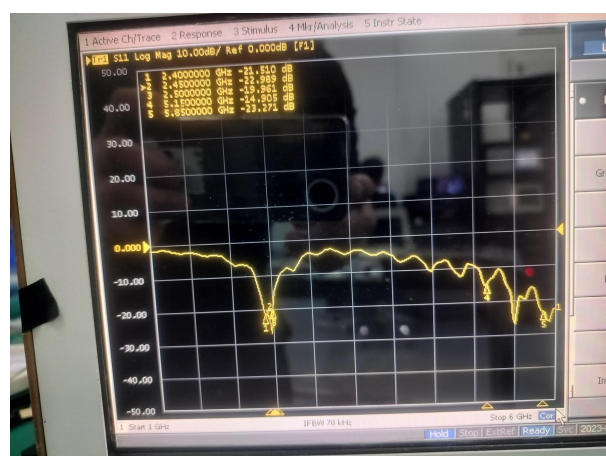
Characteristics	Specifications	Unit
Outline Dimensions	38.09x27.97x 0.12	mm
Center Frequency	2.4-2.5-5.15-5.85	GHz
Bandwidth(under-10dB return loss)	130min	MHz
VSWR	3max	

5-2.

VSWR

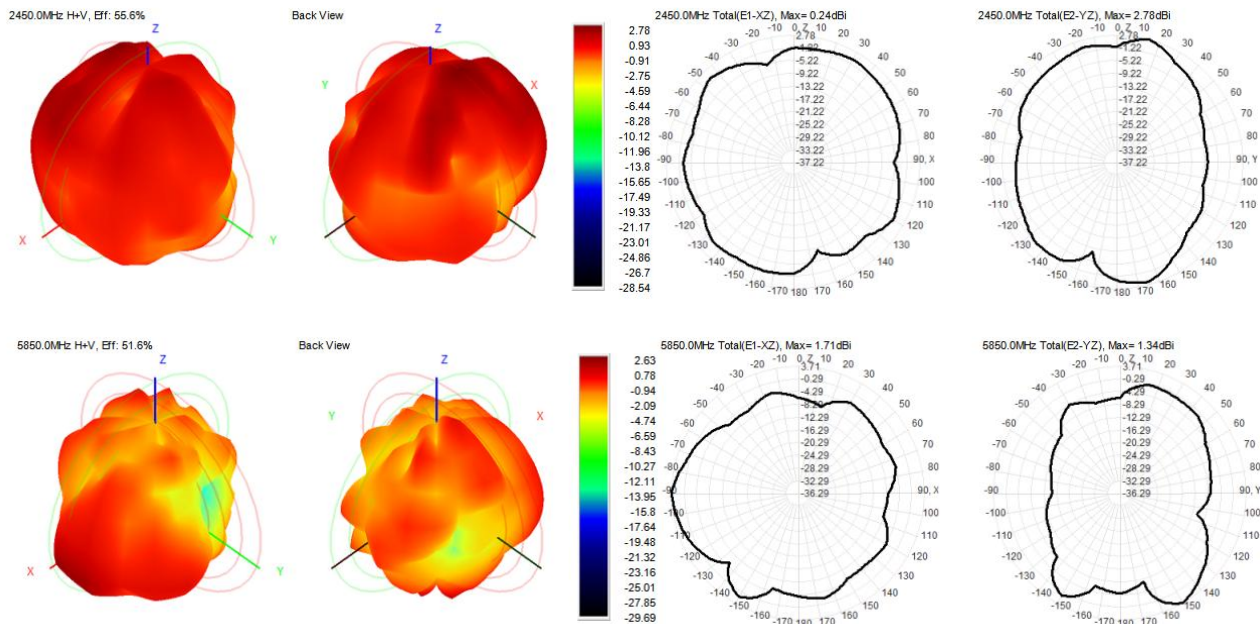


S11

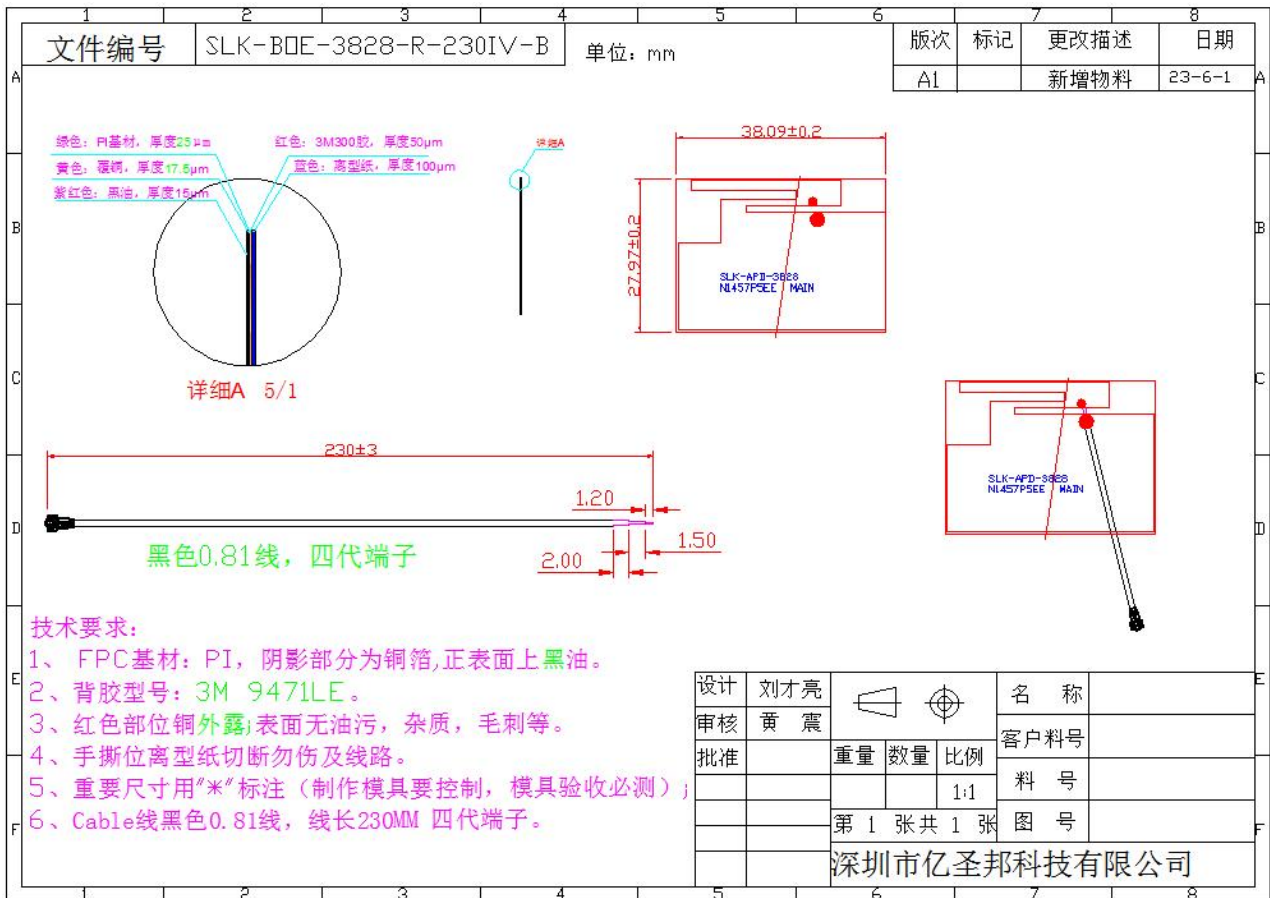


5-3.WIFI Antenna Gain/Efficiency/Radiation Pattern of 3D

Frequency (MHz)	Efficiency (dBi)	Gain (dBi)	Efficiency (%)
2400.0	-2.43	2.61	57.12
2410.0	-2.46	2.40	56.70
2420.0	-2.52	2.56	56.01
2430.0	-2.40	2.71	57.55
2440.0	-2.43	2.79	57.16
2450.0	-2.55	2.78	55.57
2460.0	-2.62	2.62	54.75
2470.0	-2.75	2.71	53.09
2480.0	-2.70	2.93	53.66
2490.0	-2.54	2.20	55.71
2500.0	-2.60	2.39	54.98
5150.0	-3.28	2.15	46.98
5350.0	-3.21	2.53	47.73
5550.0	-3.55	2.70	44.11
5750.0	-3.18	2.24	48.13
5850.0	-2.87	2.63	51.61



6. Antenna Dimensions (unit: mm)



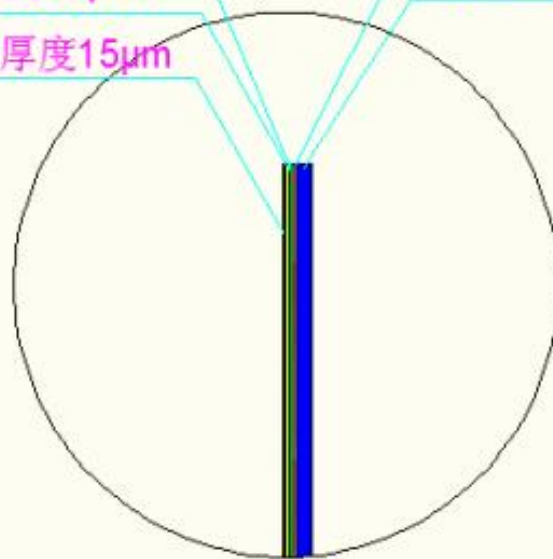
绿色: PI基材, 厚度25 μ m

红色: 3M300胶, 厚度50 μ m

黄色: 覆铜, 厚度35 μ m

蓝色: 离型纸, 厚度100 μ m

紫红色: 黑油, 厚度15 μ m



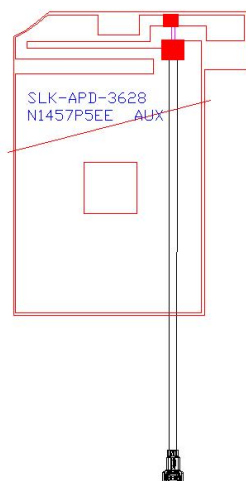
详细A 5/1

WIFIAUX Antenna (3628)

1.Explanation of Product number :

S L K - A P D - 3 6 2 8 - M - 2 6 5 I V - G

1 2 3 4 5



Product Code:

(1) Customer:

APD: 艾普达

(2) Project:

3628: SLK-3628(WIFIAUX antenna)

(3) Welding Position

M:Middle

(4) Cable Length:

265IV: 265*0.81MM四代端子

(5)Cable Color

G: Gray

2. Features

- *Stable and reliable in performances
- *Compact size
- *RoHS compliance

3. Applications

- * IEEE802.11 (a/b/g/n)
- * Hand-held devices when WIFI (802.11 a/b/g/n) functions are needed

4. Description

Holy bond's FPC antenna series are specially designed for WIFI (802.11 a/b/g/n) applications. Based on Holy bond's proprietary design and processes, this FPC antenna has excellent stability and sensitivity to consistently provide high signal reception efficiency.

5. Electrical Specifications

5-1

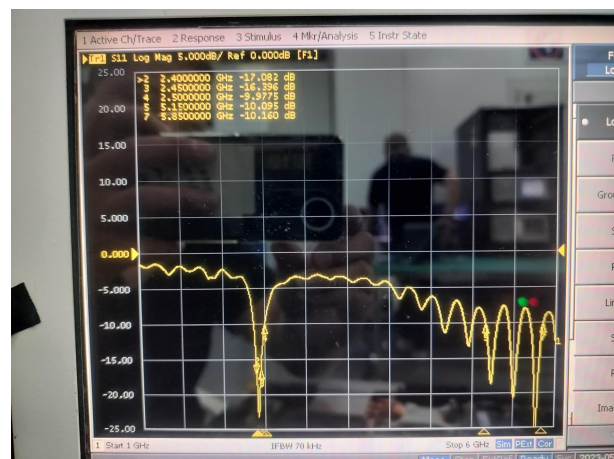
Characteristics	Specifications	Unit
Outline Dimensions	36.46x28.14x 0.12	mm
Center Frequency	2.4-2.5-5.15-5.85	GHz
Bandwidth(under-10dB return loss)	130min	MHz
VSWR	3max	

5-2.

VSWR

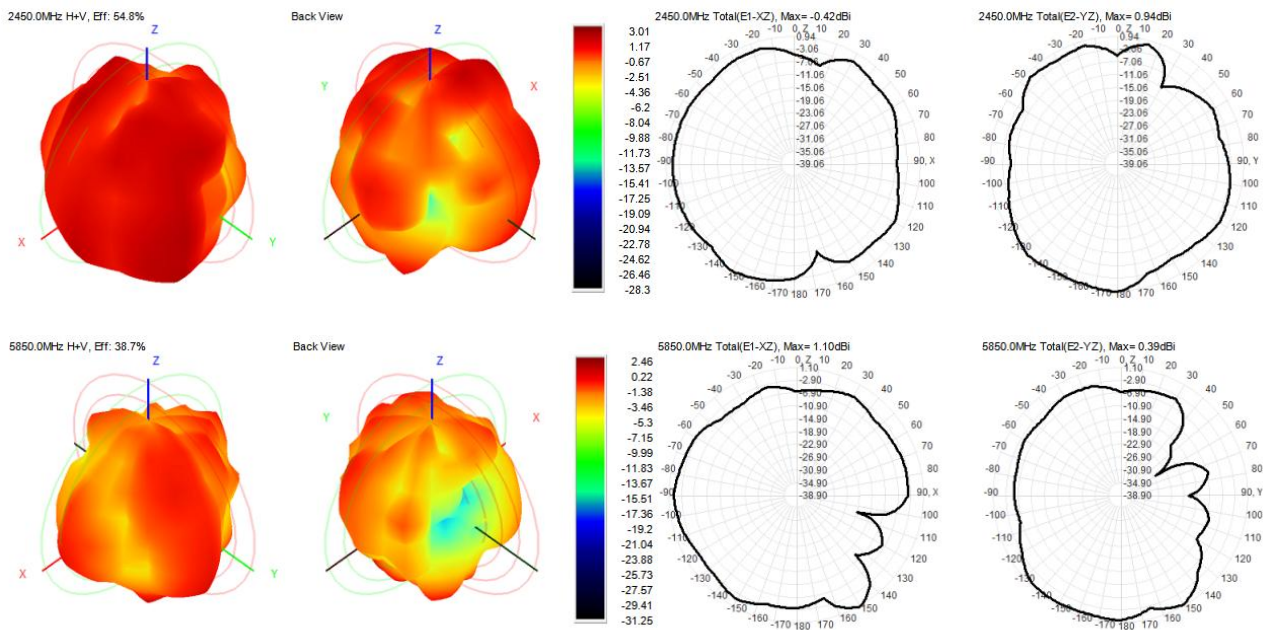


S11

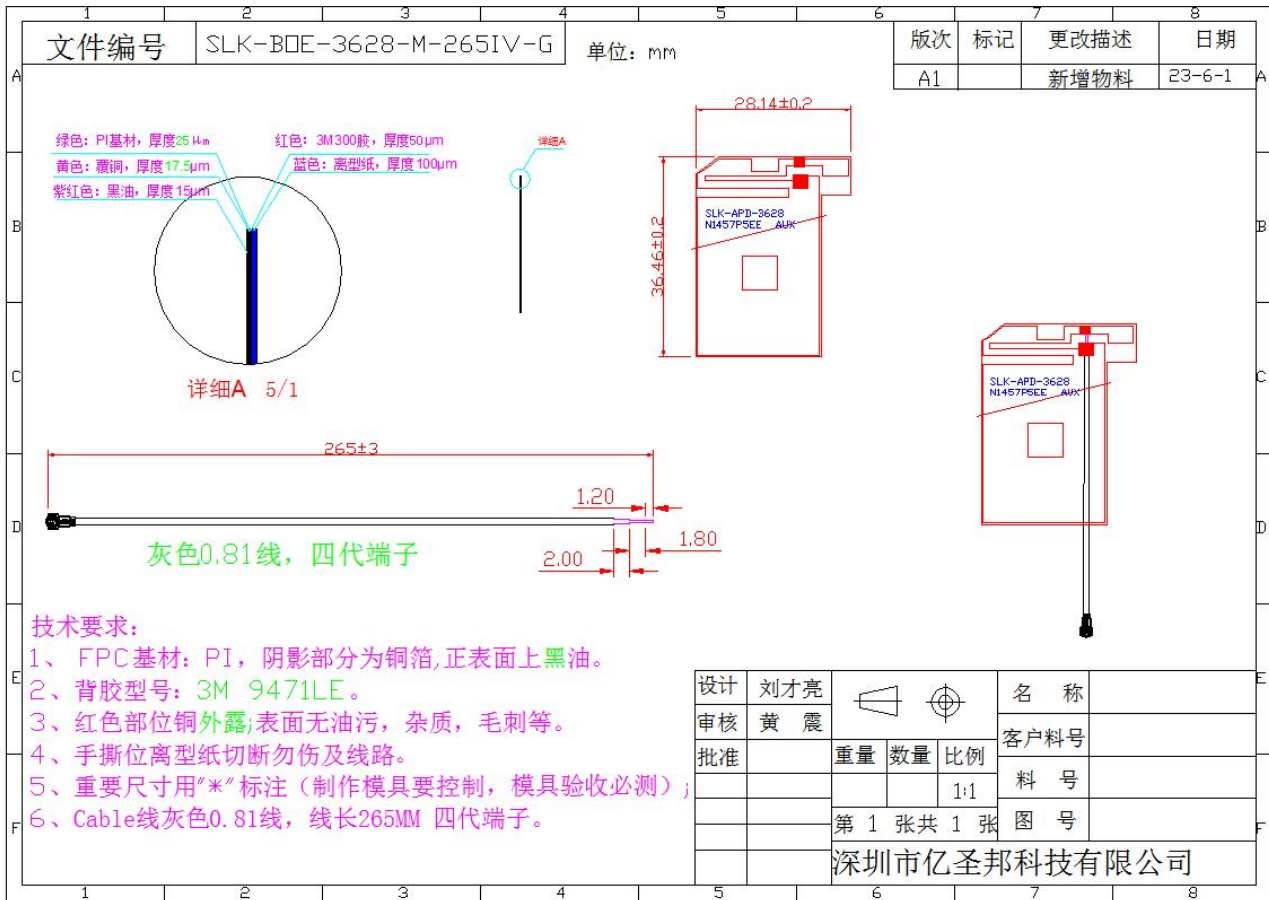


5-3.WIFI Antenna Gain/Efficiency/Radiation Pattern of 3D

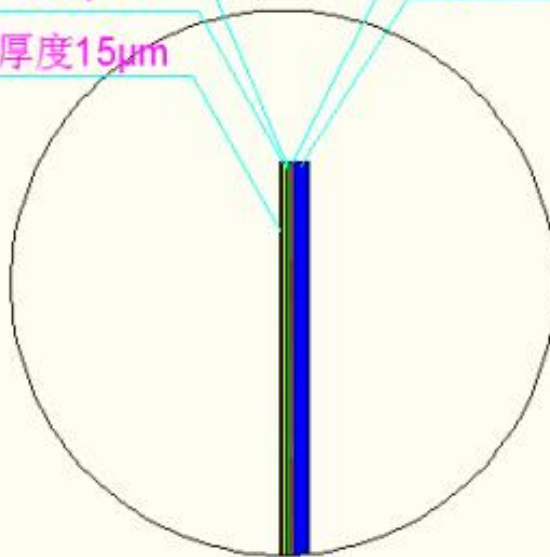
Frequency (MHz)	Efficiency (dBi)	Gain (dBi)	Efficiency (%)
2400.0	-2.62	2.65	54.73
2410.0	-2.61	2.87	54.78
2420.0	-2.63	2.31	54.57
2430.0	-2.48	2.30	56.43
2440.0	-2.51	2.20	56.11
2450.0	-2.61	3.01	54.82
2460.0	-2.61	2.90	54.82
2470.0	-2.77	2.62	52.81
2480.0	-2.72	2.65	53.45
2490.0	-2.54	2.77	55.78
2500.0	-2.62	2.17	54.67
5150.0	-3.33	2.12	46.42
5350.0	-3.07	2.19	49.35
5550.0	-4.23	2.07	37.76
5750.0	-3.76	2.49	42.12
5850.0	-4.13	2.46	38.68



6. Antenna Dimensions (unit: mm)



绿色: PI基材, 厚度25 μm
 黄色: 覆铜, 厚度35 μm
 紫红色: 黑油, 厚度15 μm
 红色: 3M300胶, 厚度50 μm
 蓝色: 离型纸, 厚度100 μm

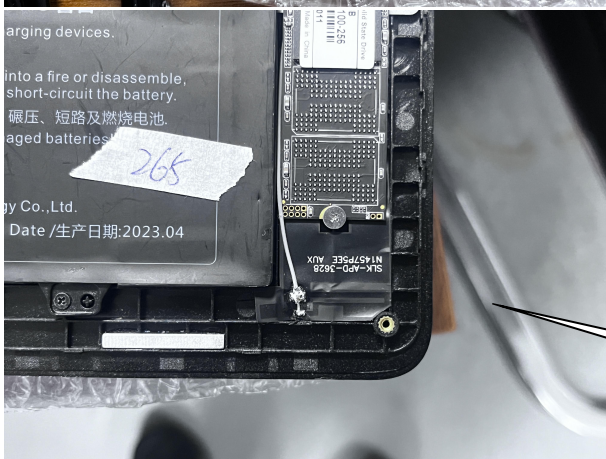


详细A 5/1

7. Antenna Picture



WIFI 主天线



WIFI 分集天线