



<i>Title</i>	<i>Crescendo FCC Marking</i>
<i>Author</i>	<i>R Weekly</i>
<i>Date</i>	<i>13th September 2016</i>
<i>Doc ID</i>	<i>6900-1604-002</i>
<i>Issue</i>	<i>1.3</i>
<i>Project Name</i>	<i>Crescendo</i>

Mystery Vibe

*C/O The Studio
Hill House Farm
Highfield Lane
Thursley, Godalming.
Surrey. UK*

Tel: +44(0)1252 444474

www.mysteryvibe.com

<i>Revision</i>	<i>Change</i>	<i>Date</i>
<i>1.0</i>	<i>Original</i>	<i>19/04/2016</i>
<i>1.1</i>	<i>Corrected typo Page 5 – should be Crescendo</i>	<i>25/07/2016</i>
<i>1.2</i>	<i>Added PCB Markings as requested by FCC</i>	<i>1/08/2016</i>
<i>1.3</i>	<i>Updated BOX image</i>	<i>13/09/2016</i>

TABLE OF CONTENTS

1 Introduction 5

2 FCC Marking..... 6

 2.1 FCC ID 6

 2.2 Crescendo Main Unit Marking 6

TABLE OF FIGURES

Figure 1 Crescendo Product 7

Figure 2 Crescendo Packaging with FCC ID 8

1 Introduction

This document provides information relating to the FCC Marking for the Crescendo Main Unit.

2 *FCC Marking*

2.1 *FCC ID*

The FCC ID shall be 2AHVA-6900.

2.2 *Crescendo Main Unit Marking*

The main Crescendo device has a silicon base outer sheaf, this sheaf cannot be marked and it is not possible to add a label on the outside due to the use case which involves the product being inserted into the body.

It will be inappropriate and unsafe to add any engraving or markings on the outside of the unit itself as these would collect dirt and impact on the ability to clean the device for use, which would make the toy unhygienic.

As such MysteryVibe intend to place the Crescendo FCC ID markings on the outer box cover such that it is visible at time of purchase.



Figure 1 Crescendo Product



Figure 2 Crescendo Packaging with FCC ID

2.2.1 Crescendo PCB Marking

In line with requests from the FCC all new PCB's manufactured shall now include the FCC information on the silk screen of the PCB. This is illustrated below:

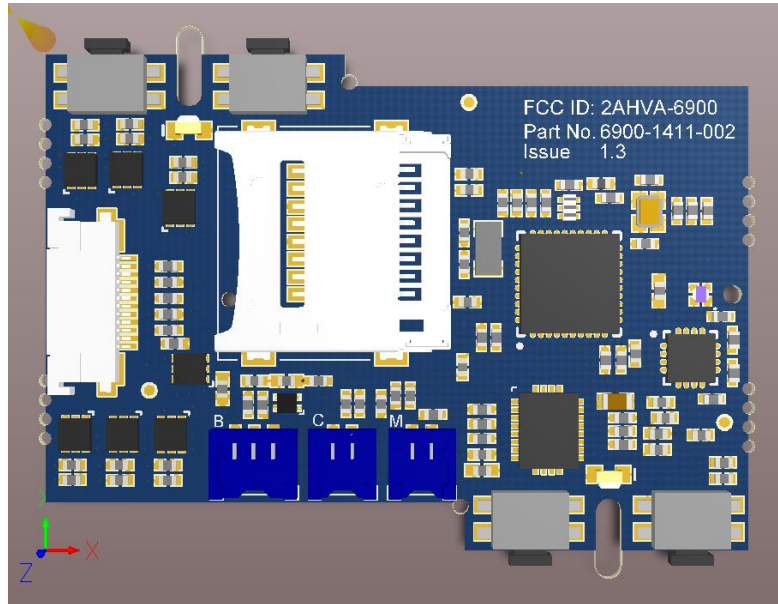


Figure 3 FCC ID To be added to Silk Screen