



# FPV AERIAL CAMERA # C4015

## INSTALLATION INSTRUCTION MANUAL

FCC ID: 2AHV3C4015

This device complies with Part 15 of the FCC Rules. Operation is subject to the following two conditions : (1) this device may not cause harmful interference, and (2) this device must accept any interference received, including interference that may cause undesired operation.

**Warning:** Changes or modifications to this unit not expressly approved by the party responsible for compliance could void the user's authority to operate the equipment.

**NOTE:** This equipment has been tested and found to comply with the limits for a Class B digital device, pursuant to Part 15 of the FCC Rules. These limits are designed to provide reasonable protection against harmful interference in a residential installation. This equipment generates, uses and can radiate radio frequency energy and, if not installed and used in accordance with the instructions, may cause harmful interference to radio communications.

However, there is no guarantee that interference will not occur in a particular installation. If this equipment does cause harmful interference to radio or television reception, which can be determined by turning the equipment off and on, the user is encouraged to try to correct the interference by one or more of the following measures:

- Reorient or relocate the receiving antenna.
- Increase the separation between the equipment and receiver.
- Connect the equipment into an outlet on a circuit different from that to which the receiver is connected.
- Consult the dealer or an experienced radio/TV technician for help.

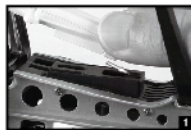
## FPV module #C4015 installation

### Install the holder of the mobile phone:



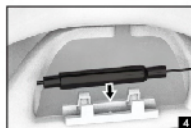
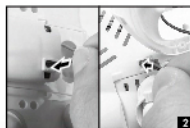
1. Connect the stand bar to the mobile phone holder.
2. Adjust the mobile phone holder upward or downward according to the size of the mobile phone.
3. Fix the connected ring of the stand bar to the top of the remote control.
4. Pull back the lock center of the stand bar and slowly push up the connected ring, the mobile phone holder would be taken down.

### Install the camera ( for helicopter):



1. The camera should be fastened to the interface at the bottom of the helicopter.
2. Fix the module by screwing clockwise.
3. Insert the white camera plug to the interface of the camera, and then, connect the red plug at the other end of the camera wire with the interface of the helicopter's PCB.
4. Fasten the antenna bracket to the oblique tube of the helicopter, then, install the antenna to the antenna bracket.

### Install the camera ( for quad-copter):



1. The camera should be fastened to the interface at the bottom of the quad-copter, fix the module by screwing clockwise.
2. Insert the white camera plug to the interface of the camera, and then, connect the red plug at the other end of the camera wire with the interface of the quad-copter.
3. Insert the antenna bracket into interface of the foot stand and lock the screws.
4. Install the antenna to the antenna bracket.

## FPV software download and installation

### Install software:

For Android system, please visit our website [www.mjxc.com](http://www.mjxc.com) to download the software "MJX H".  
For Apple IOS system, please go to the APP store to download the software "MJX H".

### Instructions:

Power on the model, enter into settings of the smart phone. Open WIFI, search the corresponding camera C4015 WIFI signal "MJX H \*\*\*\*" and connect it. After successful connection, exit settings. Open "MJX H" software at the smart phone and click the logo "MONITOR" to enter into the control interface to watch the real-time video or click "CONTROL" to enter into the APP control interface to control the flight by the APP.

### FPV MODEL:



OPEN "MJX H"



CLICK **MONITOR** BUTTON



IMAGE IS SHOWING ON THE SCREEN

### APP CONTROL MODEL:



OPEN "MJX H"

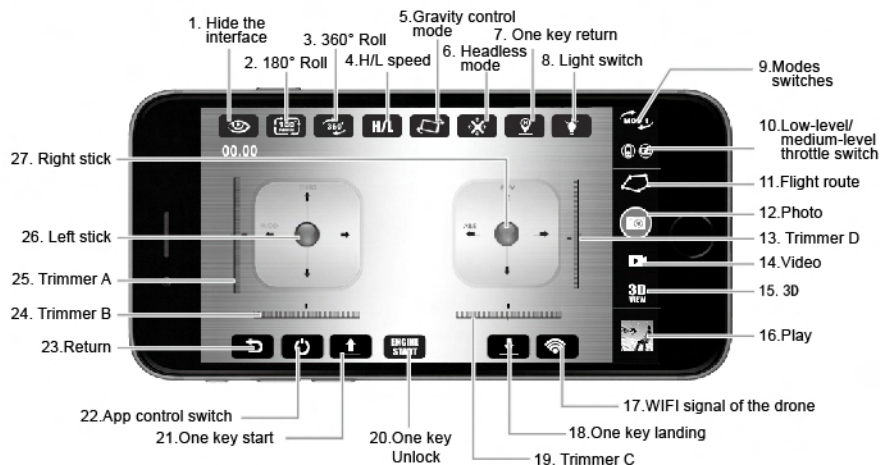


CLICK **CONTROL** BUTTON

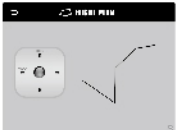


APP CONTROL IS SHOWN ON THE SCREEN

# Mobile phone APP “MJX H” control functions introduction



No.	Function switch	Function description
1	Hide the interface	Touch this button to hide the menu of the interface.
2	180° Roll	Touch this button to rotate the image 180-degree.
3	360° Roll	Once the drone is flying in the sky, touch this button the drone will 360 degree roll forward.
4	H/L speed	Turn on the APP control and then touch this button to enter into high and low speed choosing mode. When the H/L logo is in red color, the drone is in high speed mode; when the H/L logo is in black color, the drone is in low speed mode.
5	Gravity control mode	Touch this button to enter into the operation interface: MOD 2: The left control stick is the throttle control and left/right turning stick. The right stick is the forward/backward flight and leftward/rightward flight stick. MOD 1: The left control stick is the forward/backward control and left/right turning stick. The right stick is the throttle control and leftward/rightward flight stick. MOD 3: The left control stick is the forward/backward control and leftward/rightward flight stick. The right stick is the throttle control and leftward/rightward flight stick. MOD 4: The left control stick is the throttle control and leftward/rightward flight stick. The right stick is the forward/backward flight and left/right turning stick.

No.	Function switch	Function description
6	Headless mode	Turn on the remote control. Touch this icon to enter into headless mode and adjust the drone.
7	One key return	Touch this icon while the drone is in headless mode. The drone will return with rear heading back.
8	Light switch	Touch this button to turn on or turn off the light.
9	Modes switches	<p>The 4 modes are as below:</p> <p>MOD 2: The left control stick is the throttle control and left/right turning stick. The right stick is the forward/backward flight and leftward/rightward flight stick.</p> <p>MOD 1: The left control stick is the forward/backward control and left/right turning stick. The right stick is the throttle control and leftward/rightward flight stick.</p> <p>MOD 3: The left control stick is the forward/backward control and leftward/rightward flight stick. The right stick is the throttle control and leftward/rightward flight stick.</p> <p>MOD 4: The left control stick is the throttle control and leftward/rightward flight stick. The right stick is the forward/backward flight and left/right turning stick.</p>
10	Low-level/medium-level throttle switch	Low-level throttle is for drones without altitude hold mode playing. Medium-level throttle is for drones with altitude hold mode playing.
11	Flight route	<p>Turn on the APP control, and then touch here to enter into flight plan. The left stick is the throttle control stick; the right control stick is the left and right turning control stick. Touch the stick to control the flight. The blank space of the screen is for flight route drawing. Once the route is drawn out, the drone will fly forward, backward, leftward and rightward according to the indication of the route.</p> 
12	Photo	Touch here, the camera will take photo.
13	Trimmer D	<p>In stick Mode 1 and 3, this button is null.</p> <p>In stick Mode 2 and 4, it helps to tune the model's forward and backward flight.</p>
14	Video	Touch here, the camera will take video.
15	3D	Touch here and wear the 3D VR glasses to experience the 3D effects.
16	Play	Touch here to play the saved video.

No.	Function switch	Function description
17	WIFI signal of the drone	It indicates the strength of the WIFI signal.
18	One key landing	While the drone is flying, touch here to gently land the drone.
19	Trimmer C	In stick Mode 3 and 4, it helps to tune the model's left and right direction turning speed. In stick Mode 1 and 2, it helps to tune the model's sideward flight.
20	One key unlock	Short press this button to unlock the drone when the drone is not unlocked.
21	One key start	Once the model is unlocked and rotates slowly on the ground. Short press this button, the model will take off automatically.
22	App control switch	Touch this button, the icon will be in red color while the mobile phone is sending out connection signal. Once the drone's WIFI signal is successfully connected, the drone indicate will be constant "on".
23	Return	Touch here to exit the APP control interface and enter into mode choosing.
24	Trimmer B	In stick Mode 3 and 4, it helps to tune the model's sideward flight. In stick Mode 1 and 2, it helps to tune the model's left and right direction turning speed.
25	Trimmer A	In stick Mode 2 and 4, this button is null. In stick Mode 1 and 3, it helps to tune the model's forward and backward flight.
26	Left stick	STICK MODE 2: upward/downward, turn left/turn right; STICK MODE 4: upward/downward, leftward/rightward. STICK MODE 1: forward/backward, turn left/turn right; STICK MODE 3: forward/backward, leftward/rightward.
27	Right stick	STICK MODE 1: upward/downward, leftward/rightward; STICK MODE 3: upward/downward, turn left/turn right; STICK MODE 2: forward/backward, leftward/rightward; STICK MODE 4: forward/backward, turn left/turn right.

## Contents



For helicopter



For quad-copter

### Statement

“FCC RF Radiation Exposure Statement Caution: To maintain compliance with the FCC’s RF exposure guidelines, place the product at least 20cm from nearby persons.” “The device must not be co-located or operating in conjunction with any other antenna or transmitter.”