



User Manual



SLX-NANO MODEL

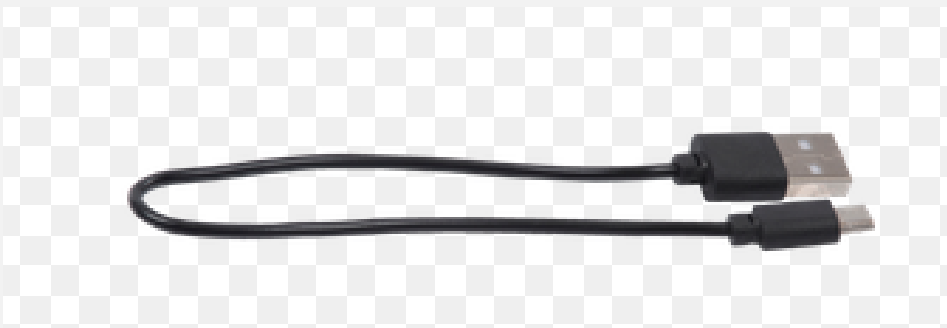
User Manual

Composition

SLX-NANO PRO model components.
It may be changed depending on some package keys.

NANO SENSOR

Glove Mount



Charger Cable

Register Product

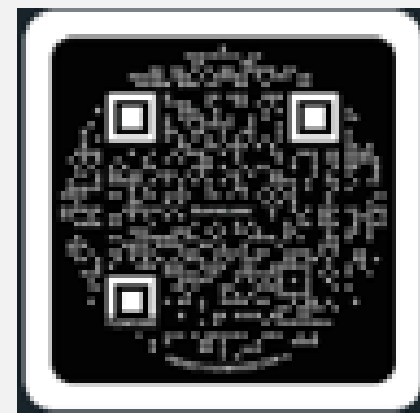
Welcome to SLX. Register your product right away.
After registration, you will receive an E6 Connect license.



Register Card

Scan QR with Camera App

You must register your product and serial number on SwingLogic.us and select the license type to receive your E6 License key



Or navigate to
<https://register.swinglogic.us>

Registration STEPS

Use Camera app to scan included QR code Fill out registration information. E6 license key will be emailed from registration@swinglogic.us and is accessible from the SwingLogic user portal Set up E6 account at <https://portal.e6golf.com/> using the same email address in step 2 Redeem license key Download E6 Connect and setup using the same email address as above

Caution) If you do not register the product, you will not be able to receive a license, and some AS and exchange may be difficult.

Swing with Nano sensor

If you use a nano sensor, you can get more accurate swing results. Golf gloves are required when swinging using the nano sensor.

Mount the sensor as shown in the figure below and install it vertically in the correct position to increase the accuracy. If you use nano sensor, you can get more accurate swing results. For accurate use, install it as shown in the figure below.



- 1 Insert the glove with the hook facing up as shown in the picture.
- 2 Insert the NANO sensor into the mount, turn it exactly 90 degrees clockwise (USB direction is down)
- 3 Be well leveled in the setup position
- 4 Swing within 3 seconds of vibration
- 5 Raise your wrist up to control the club

Note) Swing recognition may be difficult depending on the golfer's setup posture. In this case, adjust the position of your nano sensor to find the recognized position.

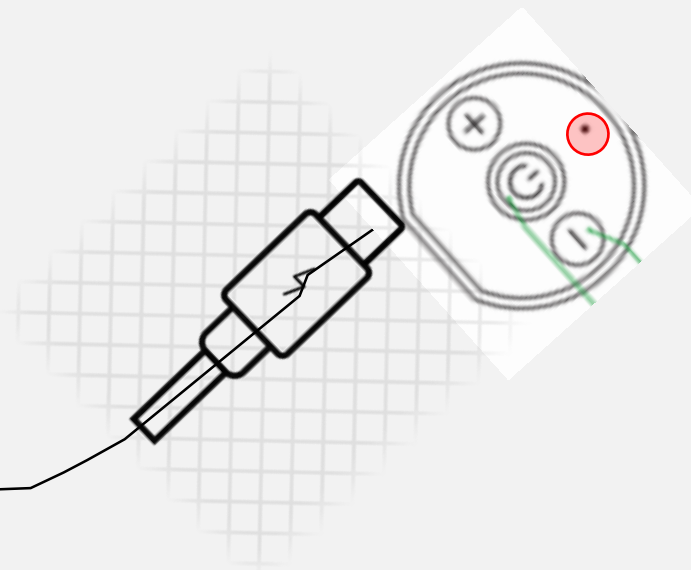
Charging and using Power bank

Charge your phone during a round of golf with power bank function

Device Charging

Adapter is not included

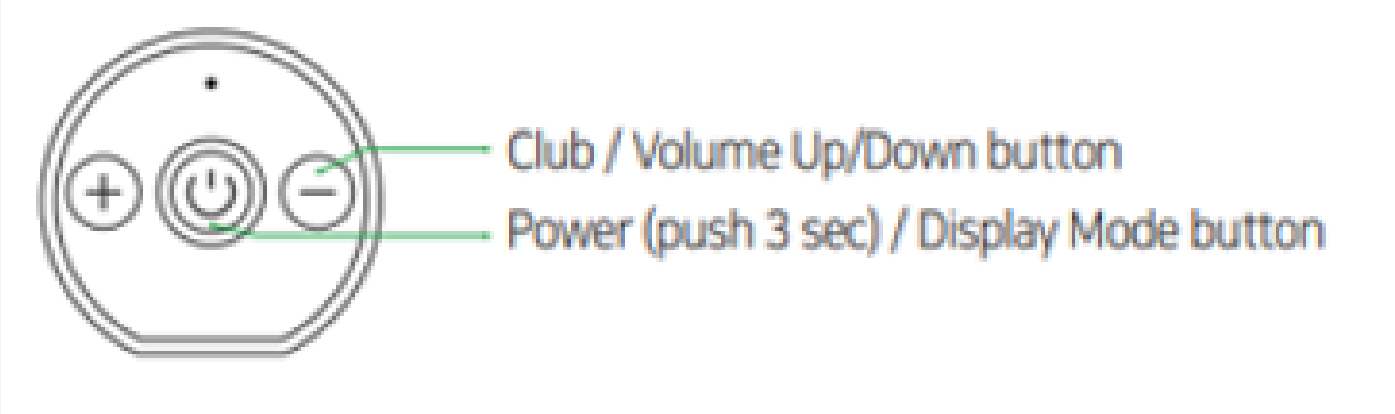
Nano
5V



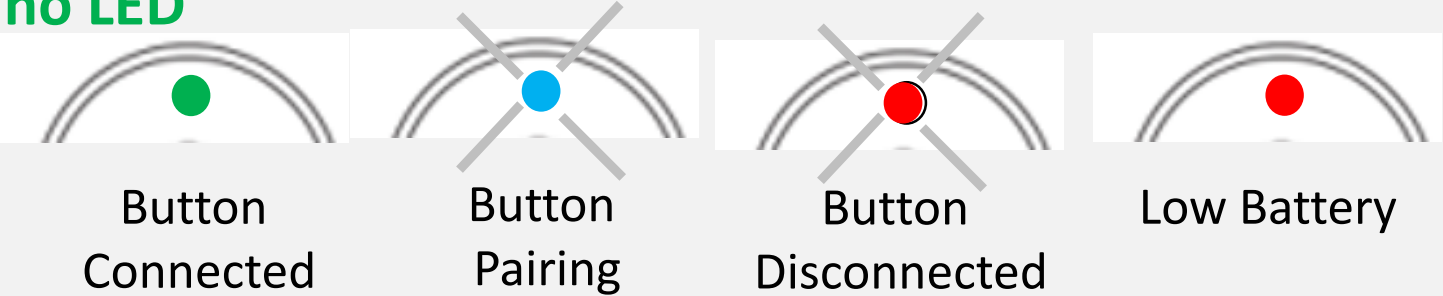
Caution) It can be charged with USB-C type using a 5V - 1AmH charging adapter. Hybrid charging time 8 hours, Nano charging time 2 hours

Enjoy the ultra-easy-to-operate buttons and the Nano button with remote control function.

Nano Button

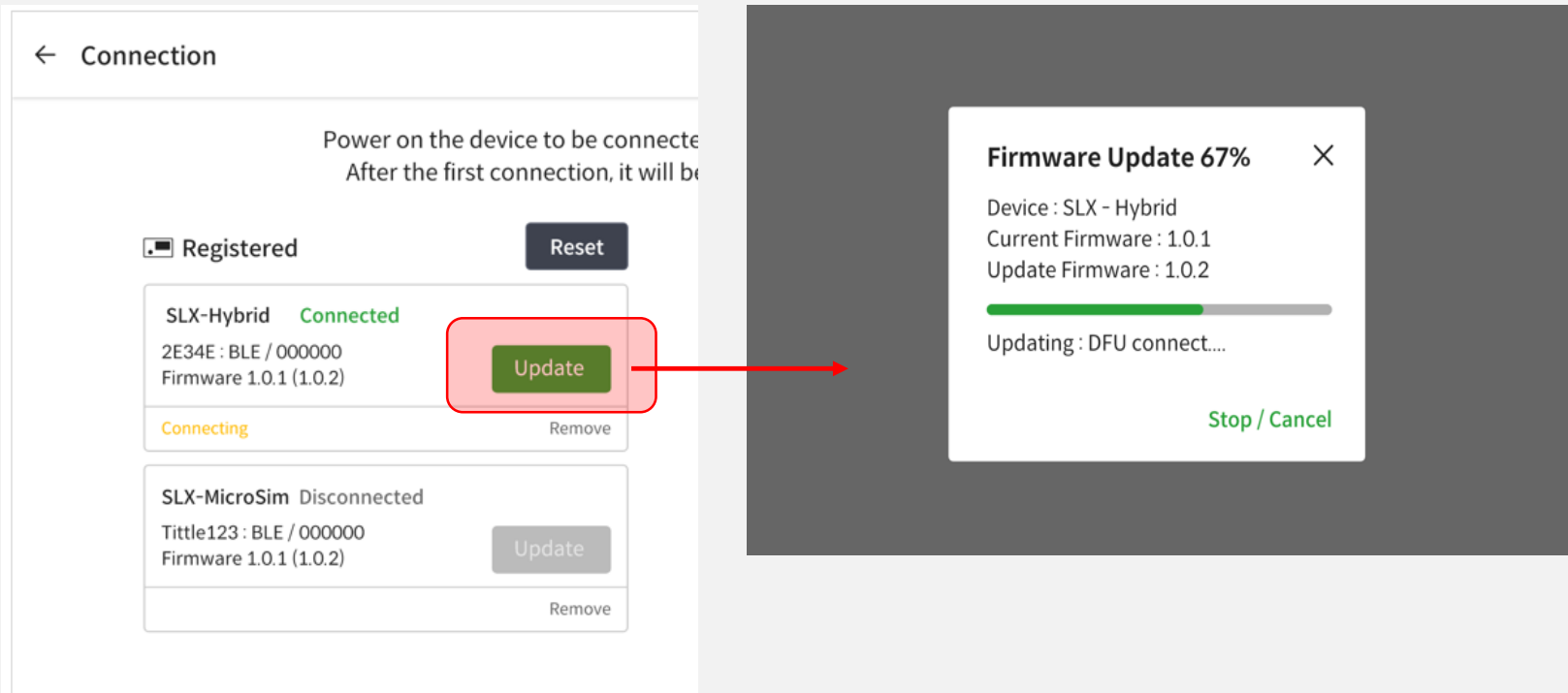


Nano LED



Connect SLX-CONNECT > Connect menu > Device Select

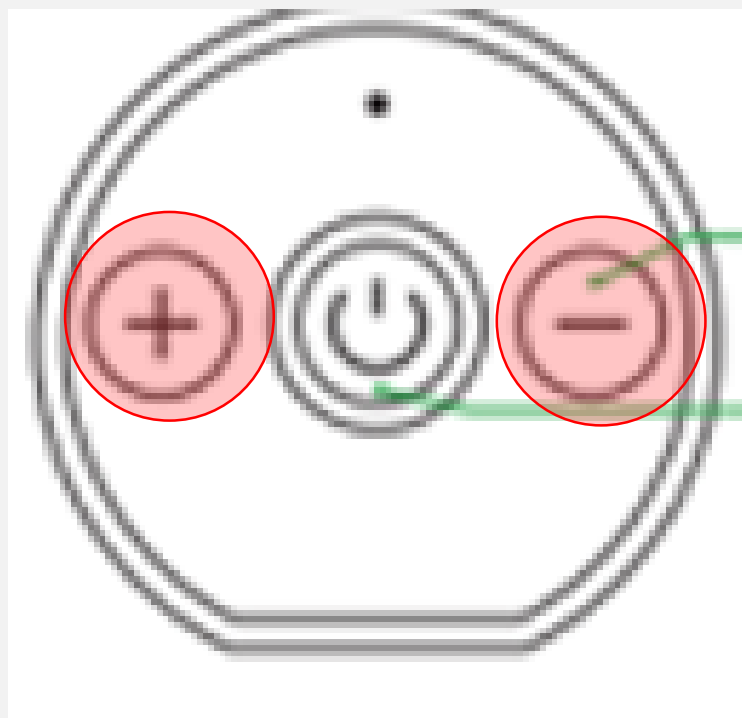
When the firmware of HW is updated, it is activated with a green button.



Device Factory Reset

If device is not connected continuously, any button does not work, or is incorrect, you can perform a factory reset through the button.

Press two fingers at the same time the + / - button continuously for more than **7 seconds**.



Nano

Caution) All stored calibration data will be deleted during factory reset.

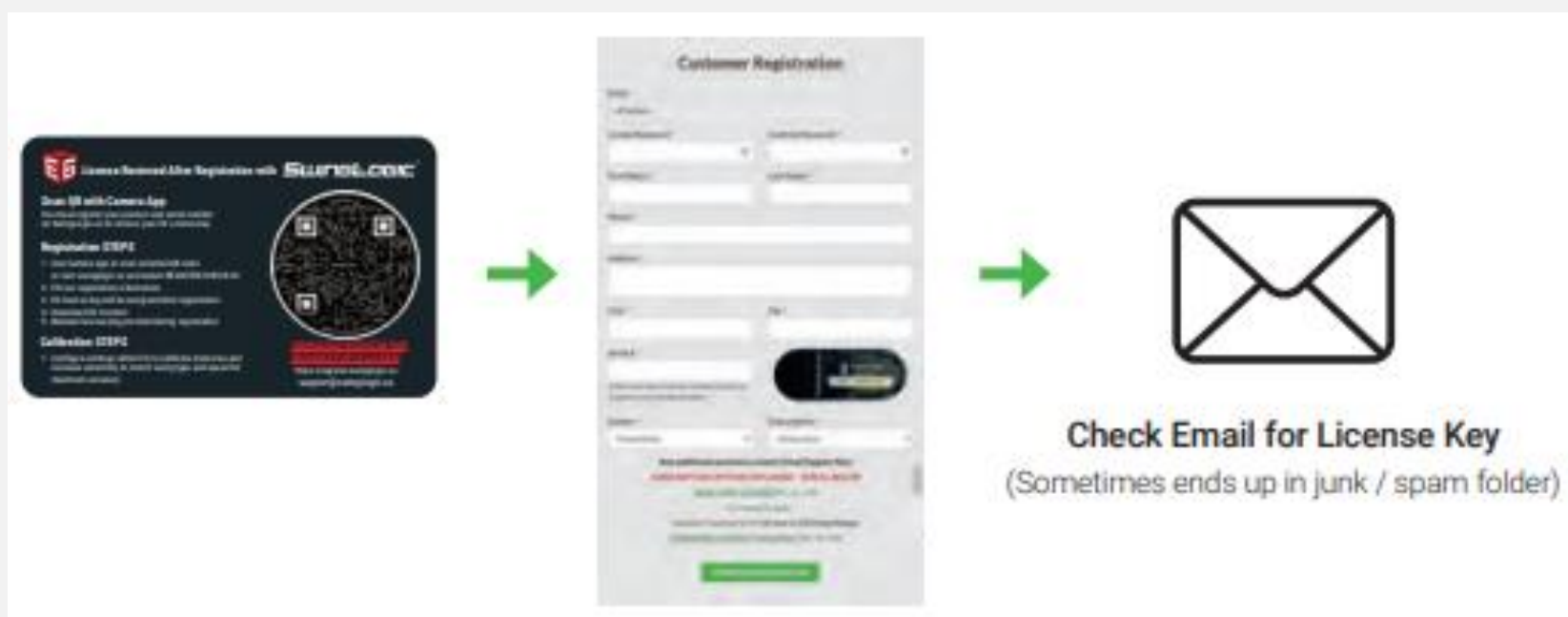
E6 CONNECT software is available.

Please install and connect according to each SETP.

Create an account and register with Swing Logic

STEP 1

Create an account and register with us STEP 1 Find the included Card as depicted below: You can either scan the QR code on your phone's camera or go to : <https://register.swinglogic.us>



LICENSE OPTIONS EXPLAINED (IMPORTANT)

5-Course Option is your FREE License and one version (iOS or PC) is included with Purchase. If you want to UPGRADE to the Expanded Content Subscription @ \$10/mo, that is the and Option DETAILS: Expanded Content Subscription now has ~40 Courses, mini games (darts, closest to pin, battleship...) & Online Play + multiple modes (Regular Stroke Play, captains choice, best ball etc...) Check out our website to learn more about the additional features if this interests you. If you are an avid golfer...\$10/mo for infinite rounds on 40 courses is a pretty good deal

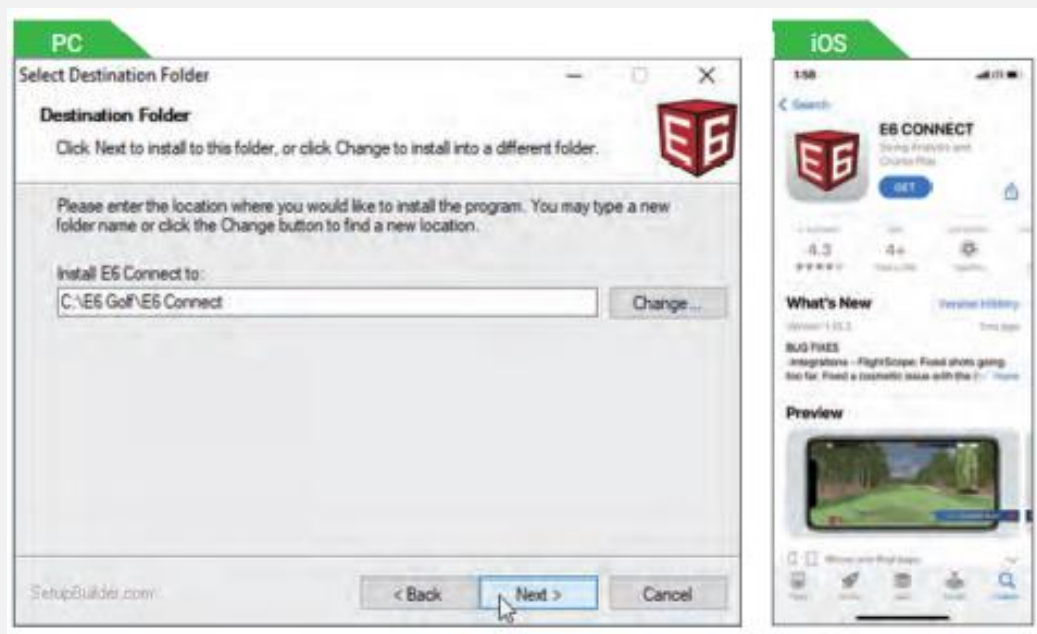
Install E6 CONNEC

STEP 2

After download, Run the program to install the software.

PC Version: <https://portal.e6golf.com/update/e6-connect>

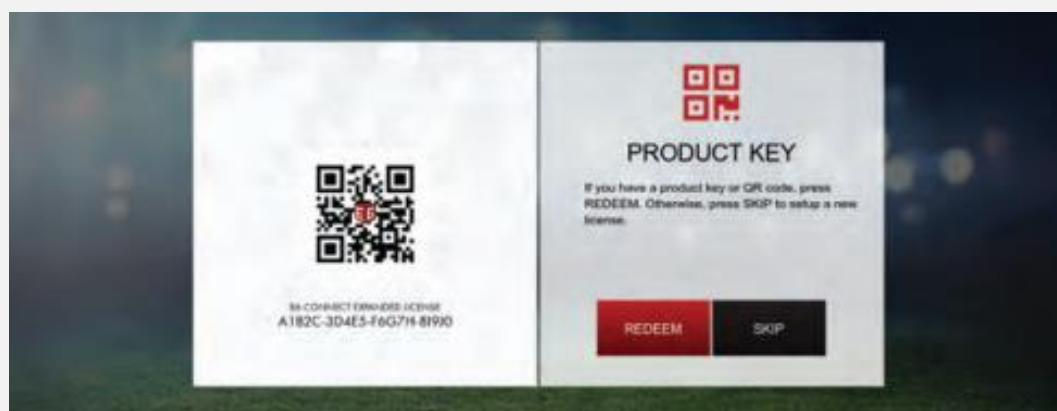
iOS Version: You will need to download the software from the app store. If you search for “E6 CONNECT” then it will pull up and you will be able to download



Start the E6 Application & Redeem your License

STEP 3

If you have a License code, press the REDEEM button to enter the code. If you don't have the code, press SKIP to move on. If you press SKIP, the demo version will be applied by default. You will also be required to setup an E6 Connect Account during this process. Please take note and remember your login credentials



License Activation

STEP 4

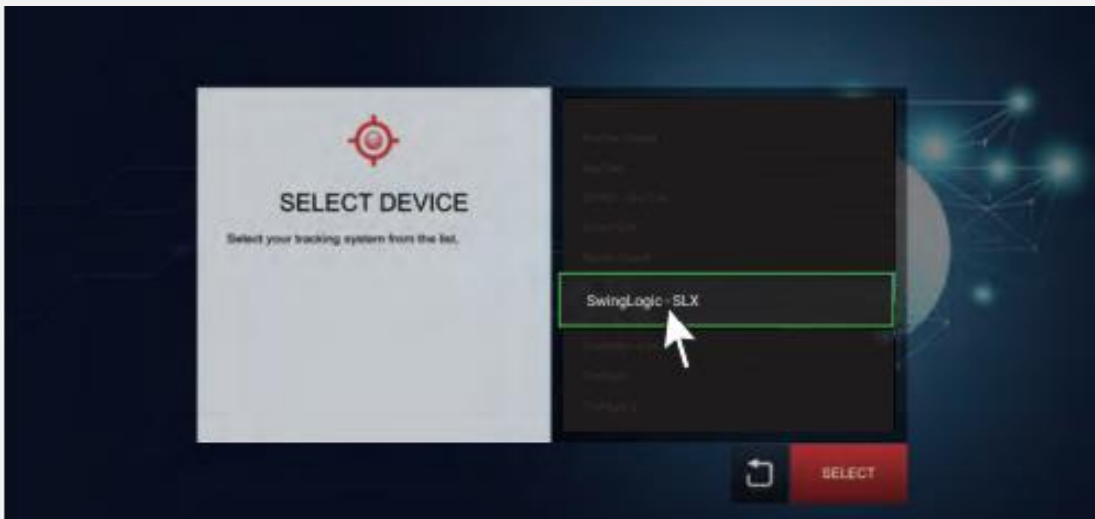
Enter License Key and press the Enter button



Select Tracking System Device

STEP 5

Select **“SwingLogic -SLX ”**

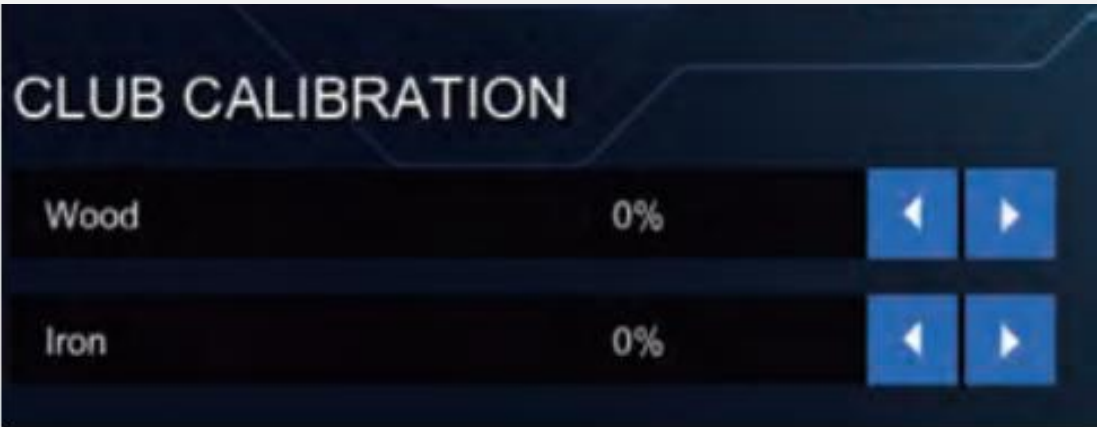


NOTE : Depending on the license type you are redeeming, the list of available trackers will be different. If you have redeemed any of the license we have provided, the list will be much shorter and contain only small sensor based products

Calibrate sensor Setting - Maximize Accuracy

STEP 8

When inside the application's Main Menu. **Settings→Simulator→Configure**



Important!

Default Settings should be: Difficulty = Normal, Sensitivity = Normal, Woods/Iron/Putter = Your Choice based on type of clubs you will be installing sensor on. It is best to start with 0% distance "boost" to see what your sensor is displaying initially then adjusting up or down based on simulator output vs expected ball flight. You can also increase the altitude in Enviromental Settings to have your ball fly further

Check the swing data on the screen

STEP 9

When you swing, the ball will fly on the screen and Post-Shot dialog is displayed.



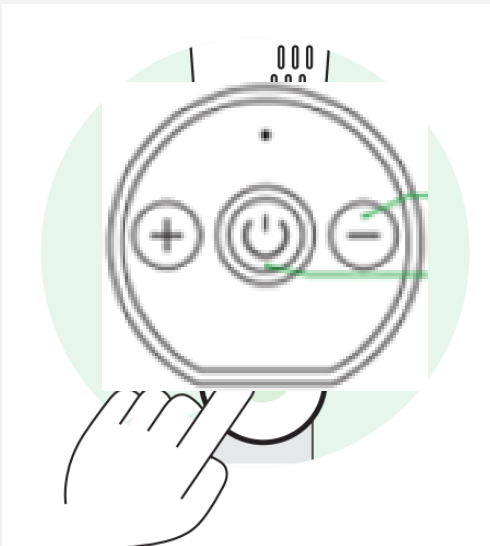
Important!

For more details on E6 Connect, check the “<https://e6golf.com/e6-connect/manual>”

Club selection control

STEP 10

You can change your club selection outside of the E6 Connect Application by click these up and down buttons



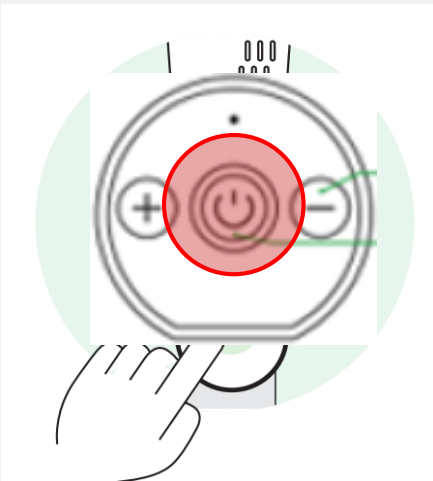
Important!

On the green, it automatically changes to the target direction. (Club side does not work on green)

Target Control

STEP 11

In the fairway / driving range, if you click the mode button once, it will change to "Target Control mode". Afterwards, you can change the target with the up/down buttons. If you click the mode button again, it will change to "Club Control mode".



Check the latest registered information at swinglogic.us/support. Below is a simple troubleshooting guide.

Replacing and reconnecting the Nano Sensor

- ✓ If the Hybrid and Nano are not connected or if you need to replace the Nano,
- ✓ See the "Nano Sensor Replacement" manual.
- ✓ If you press and hold the "-" button on the Hybrid and Nano sensors, they are automatically connected.

Nano Sensor Swing Recognition

- ✓ If the nano sensor does not recognize the swing well,
- ✓ try adjusting the position of the sensor installed on the glove.
- ✓ Depending on the customer's setup posture, it may not be recognized.



Calibration of swing results

- ✓ If the swing results are very different
- ✓ try adjusting each result in the SLX-Connect app > Settings > Calibration menu.

Factory reset

- ✓ If everything does not work,
- ✓ you can reset it by pressing the "+" / "-" buttons at the same time for 7 seconds. Read the "Factory Reset" menu.

FCC Compliance Statement

This device complies with part 15 of the FCC Rules.

Operation is subject to the following two conditions : (1) This device may not cause harmful interference, and (2) This device must accept any interference received, including interference that may cause undesired operation.

CAUTION: Changes or modifications not expressly approved by the party responsible for compliance could void the user's authority to operate the equipment

This equipment complies with FCC radiation exposure limits set forth for an uncontrolled environment.



SPECIFICATION

Product name : SLX-NANO (Model NO : SLX100N)

Size : 35mm * 35mm * 8 mm (22g)

Bluetooth : 4.0 BLE 2.4GHz 1Mbps

Power Source : Li-Polymer 80mAh

Operating Temperature: -10 °C ~ 50 °C

Storage temperature: 5 °C ~ 40 °C

Manufacturer: Ulike Co., Ltd. (MADE IN KOREA)

Address : 401, 23, Daehak 1-ro 58beon-gil, Yeongtong-gu,
Suwon-si, Gyeonggi-do, Republic of Korea



Ulike Co., Ltd.