

Parts

Package include	
● Emitter	1
● Receiver(Headphone)	1
● Instruction Manual	1
● Audio cable	1

Installation

● Installing the receiver:

Insert two AAA batteries into the battery compartment according to the + and - polarity. Turn the function switch to the location of WIRELESS or FM. The indicator on the headphone shine to ensure that the headphone work well.

● Installing the emitter:

Insert two AAA batteries into the battery compartment according to the + and - polarity, or insert the power adaptor (optional) into power socket of emitter (4.5V DC). Insert audio plug of the emitter into AUDIO-OUT socket of audio source (such as TV set, audio device, PC, DVD player, CD player, MP3 player, etc.). Please see Fig.1, Fig.2, Fig.3, Fig.4 (Note: locate the emitter at a high position in order to achieve best reception effect)

Operation

● Wireless headphone

- (1) Please see Fig.1, Insert the emitter audio cable into the AUDIO-OUT socket of the electronic device and turn the function switch of the emitter to the "Wireless Headphone" position, then the emitter indicator shine.
- (2) Built in the battery on the emitter and the receiver, turn the receiver power switch

switch to the "ON" position, the indicator of the headphone go on. Put the volume control to a suitable position, Press the "RESET" then "SCAN" button adjust the tiny modulation on the receiver(Headphone) till getting a best effect

● Wireless net audio chat

- (1) Connect the emitter audio cable into the audio out socket of the PC, then insert one end of the audio cable (optional) into the microphone socket(MIC) on the emitter, and insert the other end into the microphone in socket of the PC (see Fig.2).
- (2) Turn on the power switch of the emitter, then the indicator go on well, put the out-built MIC forward yourself and keep away with the distance of 0.5M(see Fig.2).
- (3) Open your chat tool and turn the switch to the "audio chat" position, Turn on the receiver then the indicator of the headphone go on well. Adjust the volume to the suitable position, then headphone can receive the sound via the SKYPE/MSN/QQ from your friends in the other end.

● Wireless Monitoring

Place the emitter near baby and old people etc. Put the out-built Microphone(Mic) forward Monitor.

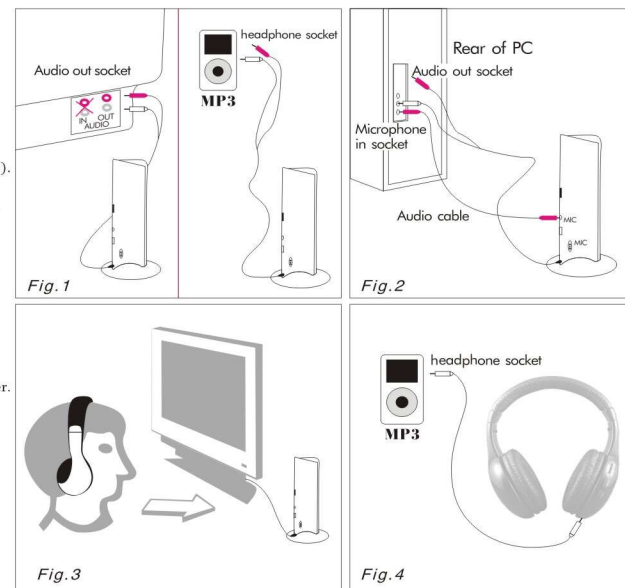
- (1) Turn the Power switch of the emitter to "MONITOR" the indicator bright.
- (2) Turn the Power switch of the receiver(ON/OFF) the indicator bright. Press the "RESET", then the "SCAN" button, the sound of the Monitor can be hear by receiver.

● Listen to the radio

The receiver can be used separately as an FM radio. Turn on the receiver, press the "RESET" once, then press the "SCAN" key in turn to search a higher range and lock one radio channel; when the highest range is reached, press "RESET" key, and the frequency returns to the lowest range. Press "SCAN" key again, and the receiver will search the radio channels from the low range again.

● Wired Headphone (without batteries)

Insert one end of the audio cable (optional) into the audio socket of the receiver (see Fig.4), and insert the other end into the headphone socket of the electronic devices, such as MP3 player, VCD player, DVD player, etc., and then the unit can be used as a wired headphone.



FM Hi-Fi Wireless Headphone User's Manual

Technical Specifications

Emitter

Emission frequency: 86 ± 0.5 MHz
Modulation mode: FM
Emission distance: 30M (with no interference)
Power supply: 2xAAA batteries or 4.5V DC.

Receiver(headphone)

Frequency range: 86MHz for wireless headphone and 87-108MHz for FM radio.
Reception Mode: FM
Distortion: $\leq 2\%$
Power Supply: 2xAAA batteries

Notes

- To achieve best reception spread out emitter audio cable of the emitter or locate the emitter at a higher position. (the emitter audio cable can also be used as antenna).
- If the sound is distorted or too strong, adjust the volume of the signal source (TV set, VCD, player, DVD player, PC, MP3, walkman etc.) To a lower level, and reception performance may be improve.
- Replace the batteries if you are having the following problems
 - 1) The emitter indicator becomes dim.
 - 2) The receiver reception is poor.
 - 3) The volume becomes weak and the sound is distorted.
- Turning off the unit
When the unit is not used, move the function switch on the emitter to "OFF" position to turn off the emitter, and turn the volume control receiver to the "OFF" position, and the power indicator receiver will go out, and the receiver will turn off. Remove batteries when not using unit for a long time.

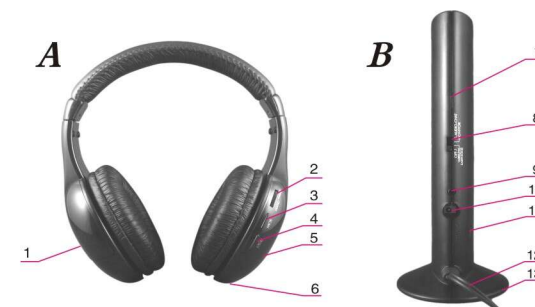
Appearance and Function Illustrations

A Receiver

1. Battery compartment cover
2. Volume control (VOL)
3. Power/Function switch (OFF-WIRELESS-FM)
4. Scan key(SCAN)
5. Reset key(RESET)
6. Power indicator
6. Audio socket

B Emitter

7. Power indicator (Front)
8. Power switch (Tiny Frequency modulation)
9. Microphone socket (MIC)
10. Power socket (4.5V DC)
11. Microphone (MIC)
12. Audio cable of emitter
13. Battery compartment (bottom)



FCC Warning Statement

Changes or modifications not expressly approved by the party responsible for compliance could void the user's authority to operate the equipment. This equipment has been tested and found to comply with the limits for a Class B digital device, pursuant to Part 15 of the FCC Rules. These limits are designed to provide reasonable protection against harmful interference in a residential installation. This equipment generates uses and can radiate radio frequency energy and, if not installed and used in accordance with the instructions, may cause harmful interference to radio communications. However, there is no guarantee that interference will not occur in a particular installation. If this equipment does cause harmful interference to radio or television reception, which can be determined by turning the equipment off and on, the user is encouraged to try to correct the interference by one or more of the following measures:

- - Reorient or relocate the receiving antenna.
- - Increase the separation between the equipment and receiver.
- -

Connect the equipment into an outlet on a circuit different from that to which the receiver is connected.

- - Consult the dealer or an experienced radio/TV technician for help.

This device complies with part 15 of the FCC Rules. Operation is subject to the following two conditions: (1) This device may not cause harmful interference, and (2) this device must accept any interference received, including interference that may cause undesired operation.