

Voyager.

Digital Wireless Observation Systems

FEATURING

WiSight[®]2.0
TECHNOLOGY

WVSXC150 - DIGITAL WIRELESS COLOR CMOS CAMERA

WVSXC150 Features:

- **WiSight[®]2.0** Digital Wireless Technology
- High Performance CMOS Sensor
- IR LED low Light Enhancement
- Waterproof (IP69K)
- Wide View Angle
- Integrated Audio Microphone

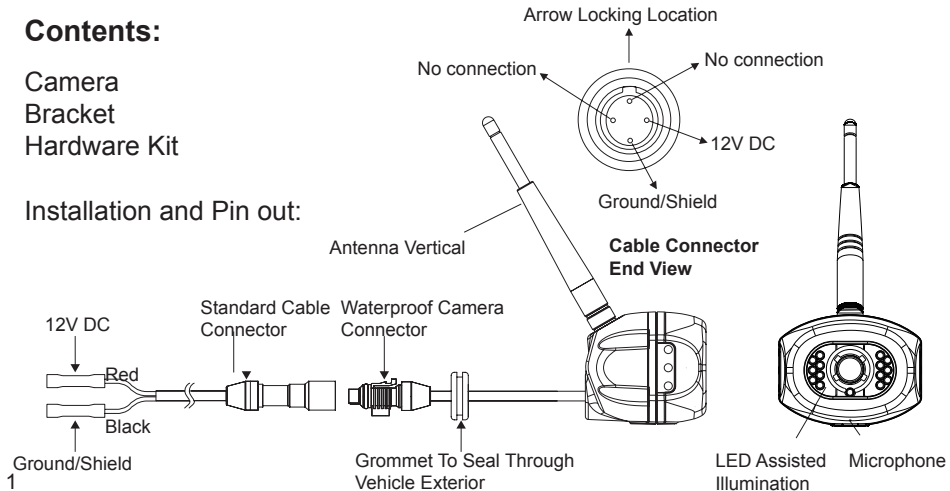
Patent # (9,054,743)

English

Contents:

Camera
Bracket
Hardware Kit

Installation and Pin out:



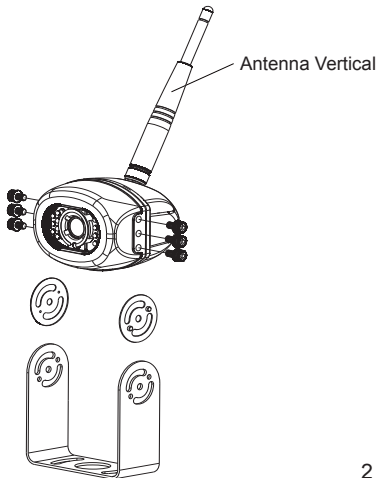
Installation

Screw For Use

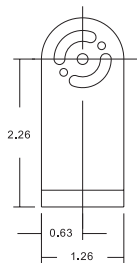
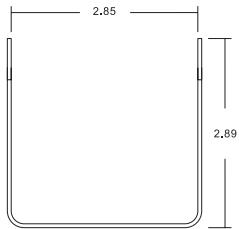
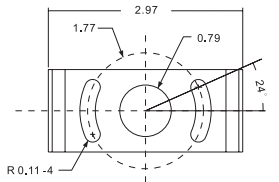
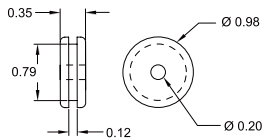
Hex Socket Head M4 X 6 mm Stainless screws

With Plain washer

Stainless Allen wrench

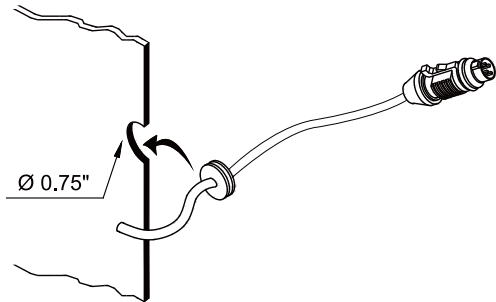


Bracket Mtg. Hole Dimensions




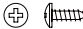

Unit : Inch


Recommended grommet Hole



Unit : Inch

Camera to bracket hardware

Specifications	Q'ty
 Hex Socket Head M4 X6 mm Stainless screws with plain washer	6
 Tapping P/H w/washer M5 X 16mm Stainless	4
 Allen wrench	1

Specifications	Q'ty
 Washer 30 x2 x0.5 mm PP	2

Specifications

Mounting Type	External type
Image sensor	1/3" CMOS camera
Resolution	640x480 pixels
Min illumination	0 Lux with IR on
Water resistance	IP69K
View angle	100°(H), 74°(V), 137°(D)
Dimension	85.5(W) X 85.1(H) X 59.8(D)mm 3.36(W) X 3.35(H) X 2.35(D)Inch
Working temperature	-20°C ~ +70°C
Weight	Approx. 0.35kg / 0.77lbs

Model: WVSXC150

FCC ID : 2AHU2WVSXC150

This device complies with Part 15 of the FCC Rules. Operation is subject to the following two conditions: (1) this device may not cause harmful interference, and (2) this device must accept any interference received, including interference that may cause undesired operation.

Notice:

The changes or modifications not expressly approved by the party responsible for compliance could void the user's authority to operate the equipment.

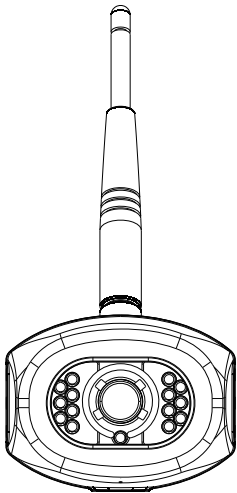
Important Note:

To comply with the FCC RF exposure compliance requirements, the antenna(s) used for this transmitter must be installed to provide a separation distance of at least 20 cm from all persons and must not be co-located or operating in conjunction with any other antenna or transmitter. No change to the antenna or the device is permitted. Any change to the antenna or the device could result in the device exceeding the RF exposure requirements and void user's authority to operate the device.

FEDERAL COMMUNICATIONS COMMISSION INTERFERENCE STATEMENT

This equipment has been tested and found to comply with the limits for a Class B digital device, pursuant to part 15 of the FCC Rules. These limits are designed to provide reasonable protection against harmful interference in a residential installation. This equipment generates, uses and can radiate radio frequency energy and, if not installed and used in accordance with the instructions, may cause harmful interference to radio communications. However, there is no guarantee that interference will not occur in a particular installation. If this equipment does cause harmful interference to radio or television reception, which can be determined by turning the equipment off and on, the user is encouraged to try to correct the interference by one or more of the following measures:

- Reorient or relocate the receiving antenna.
- Increase the separation between the equipment and receiver.
- Connect the equipment into an outlet on a circuit different from that to which the receiver is connected.
- Consult the dealer or an experienced radio/ TV technician for help.



Voyager.

Digital Wireless Observation Systems

FEATURING

WiSight[®]2.0
TECHNOLOGY

WVSXC150 – CAMARA DIGITAL COLOR INALAMBRICA CMOS

Características de WVSXC150

- Tecnología Digital Inalámbrica **WiSight[®]2.0**
- Sensor CMOS Alto Rendimiento
- Mejora Luz LED IR baja
- Impermeable (IP69K)
- Angulo de Visión Ancho
- Audio Micrófono Integrado

Patentar # (9,054,743)

Español

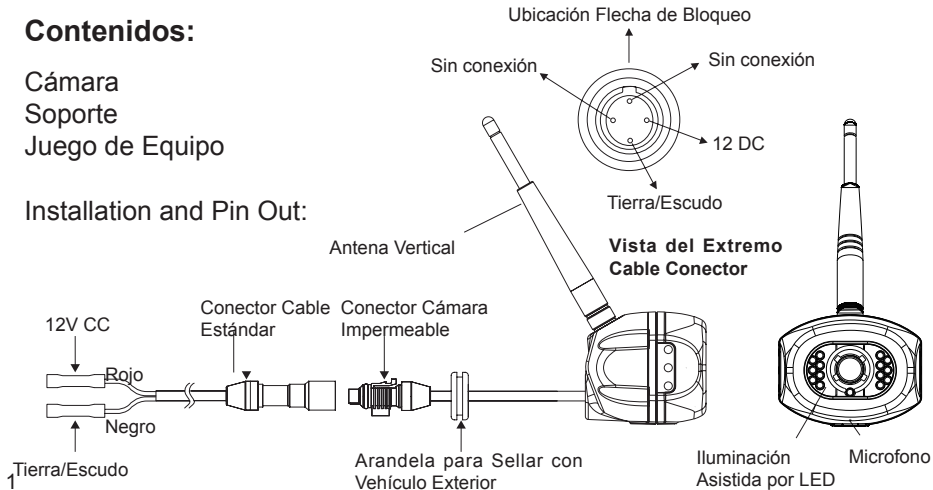
Contenidos:

Cámara

Soporte

Juego de Equipo

Installation and Pin Out:



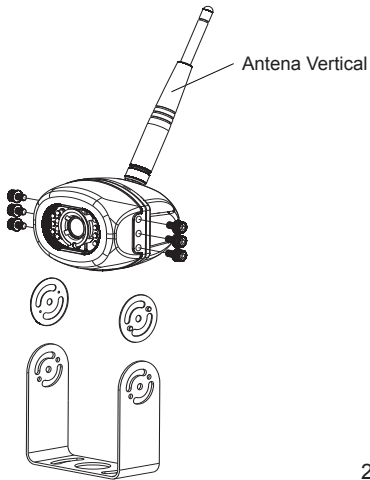
Instalación

Tornillo para Usar

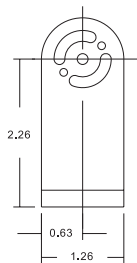
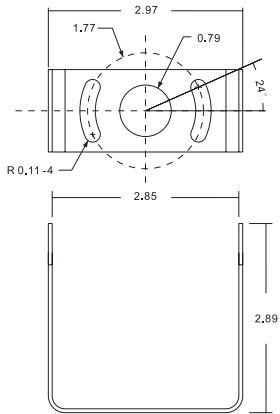
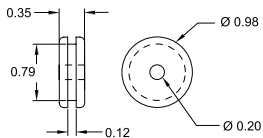
Tornillos Inoxidables Cabeza Hexagonal M4 X 6mm

Con arandela plana

Llave Allen inoxidable

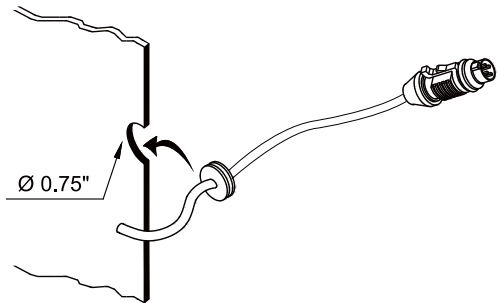


Dimensiones de Agujeros de Soporte








Unidades : Pulgadas


Agujero recomendado para arandela



Unidades : Pulgadas

Equipo para asegurar cámara a soporte

Especificaciones	Cant.
  Tornillos inoxidables con cabeza hexagonal M4 X 6 mm con arandela plana	6
  Tapón inoxidable M5 X 16mm P/H c/arandela	4
 Llave Allen	1

Especificaciones	Cant.
 Arandela 30 X 2 X 0.5mm PP	2

Especificaciones

Tipo de Soporte	Externo
Sensor de Imagen	Cámara 1/3" CMOS
Resolución	640x480 pixeles
Iluminación Mínima	0 Lux con IR encendido
Resistencia al Agua	IP69K
Angulo de Visión	100°(H), 74°(V), 137°(D)
Dimensiones	85.5(W) X 85.1(H) X 59.8(D)mm 3.36(W) X 3.35(H) X 2.35(D)pulg
Temperatura de Trabajo	-20°C ~ +70°C
Peso	Aprox. 0.35kg / 0.77lbs

Modelo: WVSXC150

FCC ID: 2AHU2WVSXC150

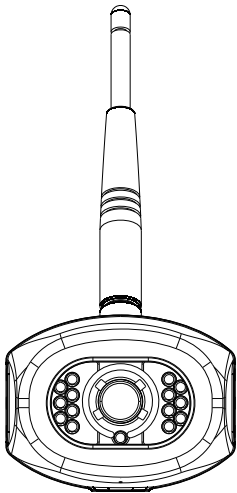
Este dispositivo cumple con la Parte 15 de las Normas de la FCC. El funcionamiento está sujeto a las dos condiciones siguientes: (1) este dispositivo no puede causar interferencias perjudiciales y (2) este dispositivo debe aceptar cualquier interferencia recibida, incluyendo interferencias que puedan causar un funcionamiento no deseado.

Nota:

Los cambios o modificaciones no aprobados expresamente por la parte responsable del cumplimiento podrían anular la autoridad del usuario para operar el equipo.

Nota importante:

Para cumplir con los requisitos de exposición a RF de la FCC, la antena (s) utilizada para este transmisor debe instalarse para proporcionar una distancia de separación de al menos 20 cm de todas las personas y no debe ubicarse ni utilizarse junto con ninguna otra antena o transmisor. No se permite ningún cambio a la antena o al dispositivo. Cualquier cambio a la antena o el dispositivo podría resultar en que el dispositivo exceda los requisitos de exposición a RF e invalide la autoridad del usuario para utilizar el dispositivo.



Voyager.

Digital Wireless Observation Systems

FEATURING

WiSight[®]2.0
TECHNOLOGY

WWSXC150- CÂMERA DIGITAL WIRELESS CMOS COLORIDA

Características da WWSXC150

- **WiSight[®]2.0** Tecnologia Wireless Digital
- Sensor CMOS de Alto Desempenho
- LED IR Luz Baixa Aprimorada
- À Prova D'água (IP69K)
- Ângulo de Visão Ampla
- Microfone com Áudio Integrado

Patente # (9,054,743)

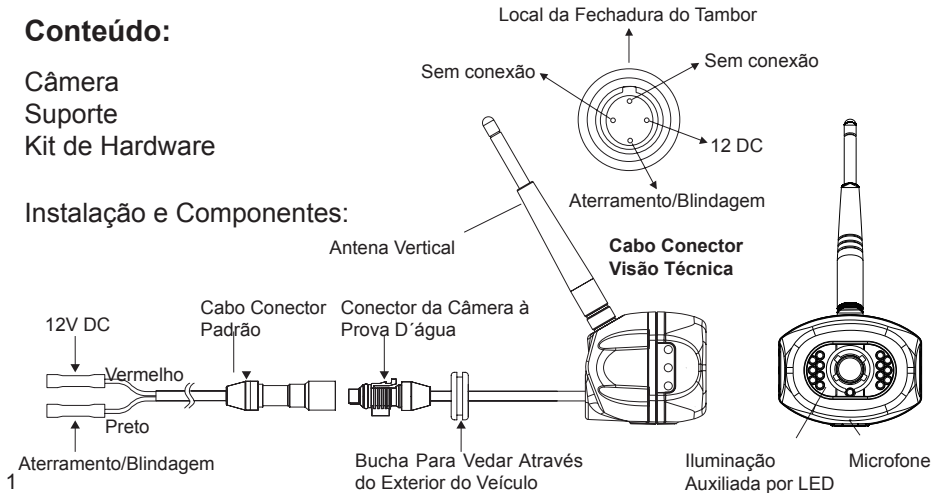
Conteúdo:

Câmera

Suporte

Kit de Hardware

Instalação e Componentes:



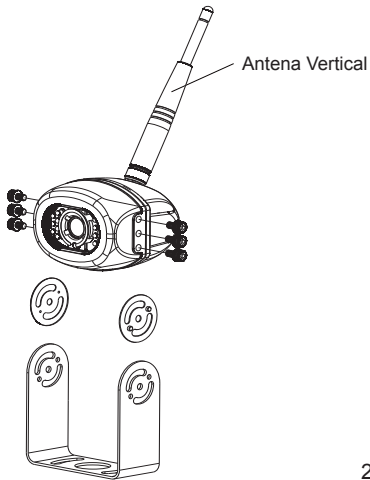
Instalação

Parafuso para Montagem

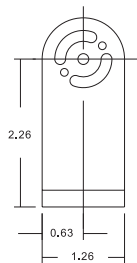
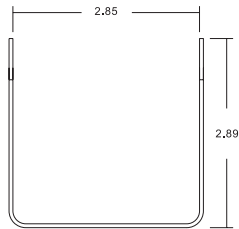
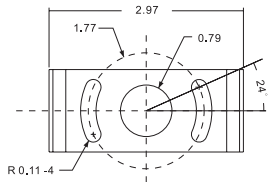
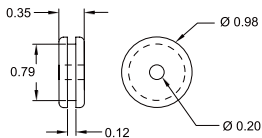
Parafusos Inox com Soquete Sextavado M4 X 6 mm

Com Arruela Simples

Chave Allen L Inox

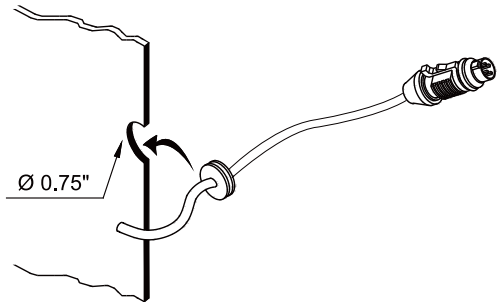


Suporte Dimensões do Orifício








Unidade: Polegada


Orifício anilhado Recomendado



Unidade: Polegada

Câmera para suporte de hardware

Especificações	Qtd
  Parafusos Inox com Soquete Sextavado M4 X 6 mm com arruela simples	6
  Parafuso P/H c/arruela M5 X 16mm Inox	4
 Chave Allen L	1

Especificações	Qtd
 Arruela 30 X 2 X 0.5mm PP	2

Especificações

Tipo de Montagem	Tipo Externo
Sensor de Imagem	1/3" câmera CMOS
Resolução	640x480 píxeis
Min iluminação	0 Lux com IR ligado
Resistência à água	IP69K
Ângulo de visão	100°(H), 74°(V), 137°(D)
Dimensões	85.5(L) X 85.1(A) X 59.8(D)mm 3.36(L) X 3.35(A) X 2.35(D)Polegadas
Temperatura de funcionamento	-20°C ~ +70°C
Peso	Aprox. 0.35kg / 0.77lbs

Modelo: WVSXC150

FCC ID: 2AHU2WVSXC150

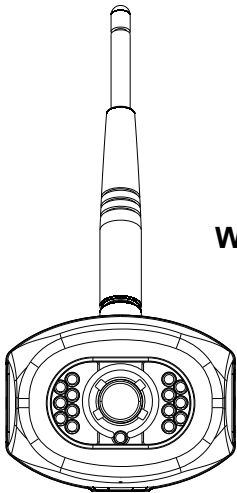
Este dispositivo está em conformidade com a Parte 15 das regras da FCC. Funcionamento está sujeito às duas condições a seguir: (1) este dispositivo não pode causar interferência nociva e (2) este dispositivo deve aceitar qualquer interferência recebida, incluindo interferências que possam causar operação indesejada.

Nota:

As alterações ou modificações não expressamente aprovadas pela parte responsável pela conformidade podem anular a autoridade do usuário para operar o equipamento.

Nota importante:

Para cumprir com os requisitos de conformidade de exposição RF da FCC, a antena (s) usada para este transmissor deve ser instalada para fornecer uma distância de separação de pelo menos 20 cm de todas as pessoas e não deve ser co-localizado ou operado em conjunto com qualquer outra antena ou transmissor. Nenhuma modificação a antena ou ao aparelho é permitido. Qualquer alteração a antena ou o dispositivo pode resultar no aparelho exceder os requisitos de exposição a RF e autoridade do usuário nula para operar o dispositivo.



Voyager.

Digital Wireless Observation Systems

FEATURING

WiSight®2.0
TECHNOLOGY

WVSXC150 – CAMÉRA NUMÉRIQUE COULEUR CMOS SANS FIL

Caractéristiques WVSC150:

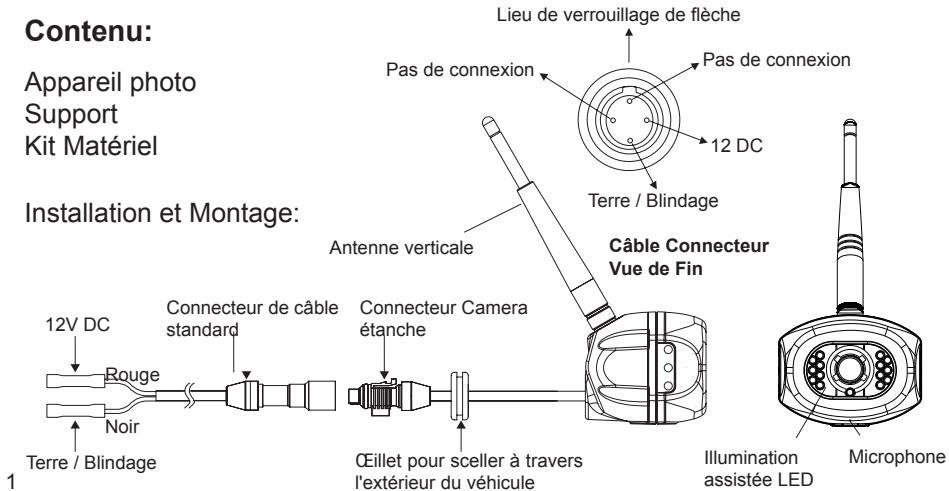
- Technologie numérique sans fil **WiSight®2.0**
- Haute performance CMOS
- Amélioration faible lumière LED IR
- Imperméable (IP 69K)
- Angle de Vue Large
- Microphone Audio intégré

Brevet # (9,054,743)

Contenu:

Appareil photo
Support
Kit Matériel

Installation et Montage:



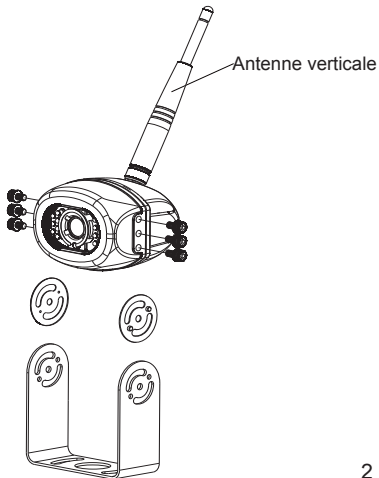
Installation

Hélice Pour utilisation

Vis à tête cylindrique M4 x vis en acier inox 6 mm

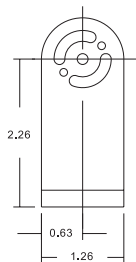
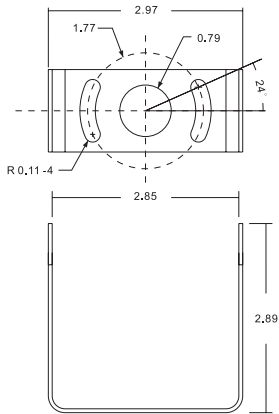
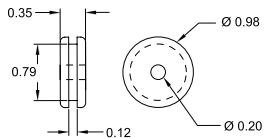
avec Rondelle

Clé Allen en acier inoxydable



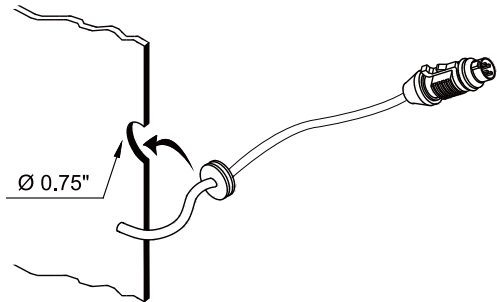
Mtg. Support

Dimensions des trous








Unité: Pouce


Trou Œillet recommandé



Unité: Pouce

Caméra au matériel de support

Caractéristiques	Qté
  Vis à tête cylindrique M4 x vis en acier inox 6 mm avec Rondelle	6
  Taraudage P / H avec rondelle M5 X 16mm Inoxydable	4
 Clé Allen	1

Caractéristiques	Qté
 Rondelle 30 X 2 X 0,5 mm PP	2

Caractéristiques

Type de montage	Type externe
Capteur d'images	1/3 "CMOS
Résolution	640x480 pixels
Éclairage min	0 Lux avec IR
Résistance à l'eau	IP69K
Angle de vue	100°(H), 74°(V), 137°(D)
Dimension	85.5(W) X 85.1(H) X 59.8(D)mm 3.36(W) X 3.35(H) X 2.35(D)cm
Température de travail	-20°C ~ +70°C
Poids	Env. 0,35 kg / 0.77lbs

Modèle: WVSXC150
FCC ID: 2AHU2WVSXC150

Cet appareil est conforme à la partie 15 des règles de la FCC. Son fonctionnement est soumis aux deux conditions suivantes: (1) ce dispositif ne doit pas causer d'interférences nuisibles, et (2) cet appareil doit accepter toute interférence reçue, y compris les interférences qui peuvent provoquer un fonctionnement indésirable.

Avis:

Les changements ou modifications non expressément approuvés par la partie responsable de la conformité pourraient annuler l'autorité de l'utilisateur à faire fonctionner l'équipement.

Remarque importante:

Pour se conformer aux exigences de conformité d'exposition RF de la FCC, l' (les) antenne (s) utilisée (s) pour cet émetteur doit (-vent) être installée (s) pour fournir une distance de séparation d'au moins 20 cm de toutes les personnes et ne doit (-vent) pas être co-localisées ou opérant en conjonction avec une autre antenne ou émetteur. Aucun changement à l'antenne ou au dispositif n'est autorisé. Tout changement à l'antenne ou au dispositif pourrait se traduire par un dépassement par l'appareil des exigences d'exposition aux radiofréquences et annuler l'autorité de l'utilisateur de faire fonctionner l'appareil.



Features and specifications subject to change without notice.
Les caractéristiques et spécifications peuvent être modifiées.
Características y especificaciones sujetas a cambios sin previo aviso.
Características e especificações sujeitas a mudanças sem aviso prévio.

For further technical support call:
Pour toute assistance technique plus détaillée, veuillez contacter le:
Para recibir soporte técnico llame al:
Se precisar de suporte técnico, ligue:

1-877-305-0445

600-2100017-011