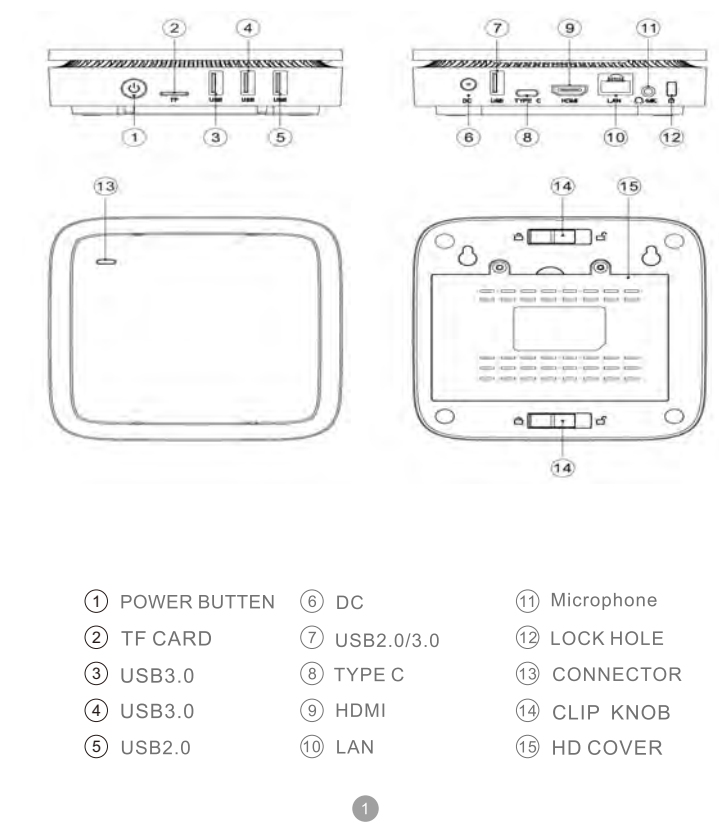
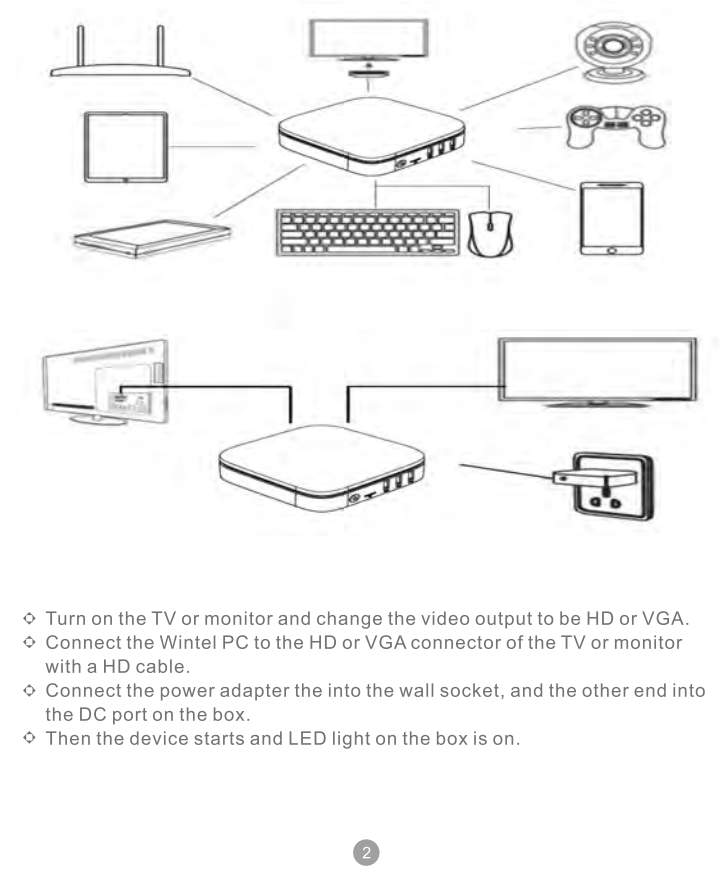


Product information



Connecting



Sleep Mode

Sleep mode: click (windows icon), then choose
→choose the sleeping mode



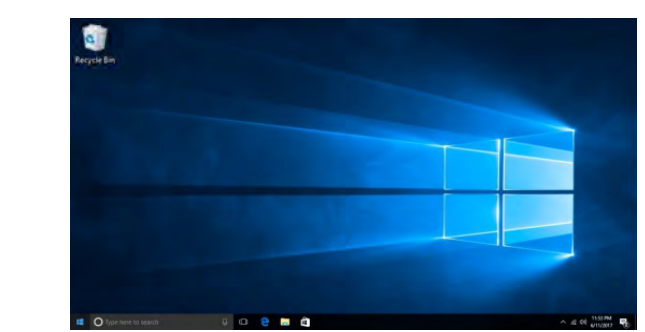
Turn Off

Turn off: click the bottom left windows icon (windows icon)
→power →power off



2 Windows 10 Operating Interface

Desktop



Start Menu



3 Auxiliary Function

Move the cursor to the left search icon, you are search for any applications, settings and documents.

4. Internet Connection

Wi-Fi connection

Turn on the Wi-Fi(wifi icon)



search the Wi-Fi around and input the password to connect it.

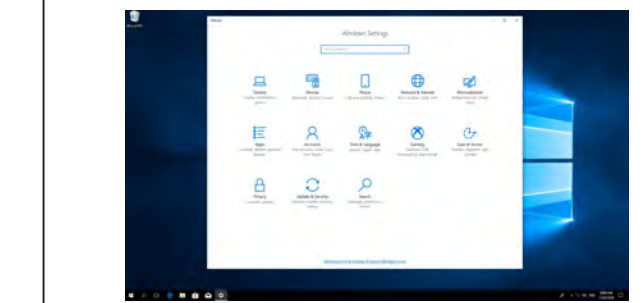


4.2 Ethernet Connection

Plug in the Ethernet cable, dial up and connection.

5. Get Start & Setting

If you get more setting for windows 10, please check the get start & setting, please do as the following methods. Click (windows icon), then to choose the setting. Or press Windows+F1.

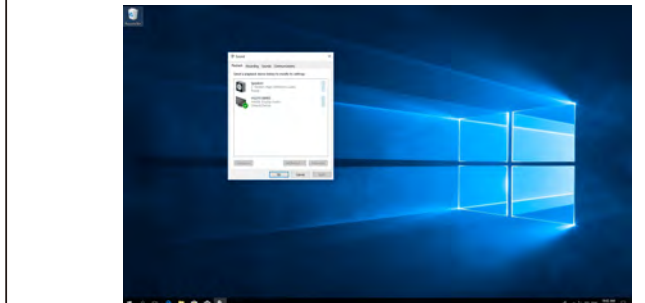


6. Sound Playback Settings

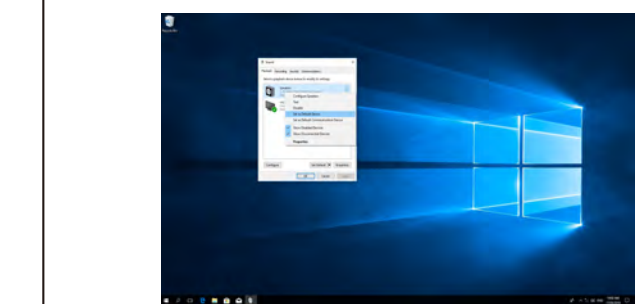
6.1 Before booting up, please connect the PC with TV or other display devices with HDMI cable. In this way, the system will recognize the current connected TV or monitor.



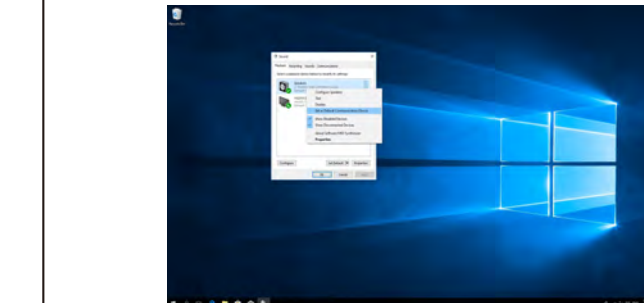
6.2 After booting up, use the right mouse button to click the sound icon on the bottom right of the desktop, please choose "Sounds" on the pop-up box to change the sound playback settings.



6.3 Change sound playback settings: Choose "Playback"-choose current connected TV/Monitor - Click "set default" - Click "OK", setting finished. The sound will come out from the connected TV/Monitor. As follows:



6.4 If you want to connect headphone to hear the sound, please also change the sound play setting from the audio playback settings. As follows:



How to install the mounting



Mini PC Wall Mounting Design

- ① Your monitor must have VESA standard holes
- ② Attach VESA standard bracket to back of monitor with screws
- ③ Hang Mini PC on the bracket

Others

Mountable To A Monitor

AK1 can be mounted to the back of your computer's LCD monitor, which makes it completely invisible on a desk. With such a low-noise PC, people will not even notice its existence at all.

Multi-display Productivity

AK1 supports two independent displays without the need for an additional graphics card. The additional displays give you more onscreen space for multi-tasking; you can spread out your work windows, mirror content, or extend a single window across multiple displays.

Windows Update

In the Windows Update section, you'll find (almost) everything you need to update Windows 10. At the top of the screen, you'll see a status message that tells you whether your computer is up to date, and when it last checked for updates. For more update options, click Advanced options.

Windows Defender

Windows Defender also has a place in the Update & security tab (though it hasn't been banished from the Control Panel like Windows Update has). In this section, you can turn on different Windows Defender options, including real-time protection, cloud-based protection, and automatic sample submission.

Windows Backup

In the Backup section you can set your backup settings: Add an external drive for backup, or click More options to see Advanced settings (this will take you to the File History window in the Control Panel).

Recovery

The Recovery section offers three options to help you fix your computer. Reset this PC, which will let you reinstall Windows without removing your files; Go back to an earlier build, which will let you go back to an earlier build of Windows (this will let you uninstall updates -- you can only go back to a previous version of Windows within the first month of upgrading); and Advanced startup, which restarts your PC so you can restore Windows from a system image, USB drive or disc.

Activation

You can now activate Windows 10 using a Windows 7, 8 or 8.1 product key, which means you can do a clean installation of Windows 10 and still receive the free upgrade promised to older Windows users. To activate your copy of Windows 10, go to the Activation section and click Change product key, or click Go to Store if you'd like to purchase a different edition of Windows.

For developers

The For developers section is designed for developers -- people making apps and programs for Windows 10. That doesn't mean you won't use it, however. If you want to sideload apps, for example, you'll need to go into this section to turn that feature on.

FCC compliance Notice

Any Changes expressly or modifications not approved by the party responsible for compliance could void the user's authority to operate the equipment.

This device complies with part 15 of the FCC Rules. Operation is subject to the following two conditions:

- (1) This device may not cause harmful interference.
- (2) This device must accept any interference received, including interference that may cause undesired operation.

Note: This equipment has been tested and found to comply with the limits for a Class B digital device, pursuant to part 15 of the FCC Rules. These limits are designed to provide reasonable protection against harmful interference in a residential installation. This equipment generates, uses and can radiate radio frequency energy and, if not installed and used in accordance with the instructions, may cause harmful interference to radio communications. However, there is no guarantee that interference will not occur in a particular installation. If this equipment does cause harmful interference to radio or television reception, which can be determined by turning the equipment off and on, the user is encouraged to try to correct the interference by one or more of the following measures:

- Reorient or relocate the receiving antenna.
- Increase the separation between the equipment and receiver.
- Connect the equipment into an outlet on a circuit different from that to which the receiver is connected.
- Consult the dealer or an experienced radio/TV technician for help.