

# The Clean Cap Manual – Installation and Activation

**WARNING** The user should first read the manual thoroughly before proceeding.

## Clean Cap Inventory

Boxed	Additional	Optional
Clean Cap	Magnet	Bracket
3 x short M5 torx screws	Torx driver	4 x M10 bolts
3 x long M5 torx screws		4 x M10 nuts
		4 x M10 washers
		4 x M10 bolt caps

## Clean Cap Installation

**NOTE** The Clean Cap can be installed on either the top lid or the inner side of a waste container. If the installation is for a waste container with a top lid, the Clean Cap should be installed under the top lid. If the installation is for a waste container without a top lid, the Clean Cap should be installed on the inner side of the waste container.

### Installing the Clean Cap on the top lid

**NOTE** The Clean Cap should be installed so that the sensor points to the center of the waste container to be fully effective.

*Required materials: Marker, M5 drill bit, Power drill, Torx driver, 3 x M5 torx bolts, Clean Cap*



1. Unscrew the 3 M5 torx bolts, and remove the top cover
2. Using the top cover, mark 3 holes where the Clean Cap is to be installed.
3. Using a power drill with a M5 drill bit, drill the holes according to the marked locations.
4. Position the Clean Cap underneath the top lid. Place the top cover on the top lid. Align the holes of the top cover, the top lid and the Clean Cap. Screw M5 torx bolts into each hole.

**NOTE** If the top lid is thick, long M5 torx screws are required.

## Installing the Clean CAP on the inner side

**NOTE** The Clean CAP should be installed so that the sensor points to the center of the waste container to be fully effective.

*Required materials: Marker, Torx driver, Power drill, M10 drill bit, Wrench, 4 x M10 nuts & bolts & washers & bolt caps, 3 x M5 torx bolts, Clean CAP, Bracket, 4 x M10 bolt caps*



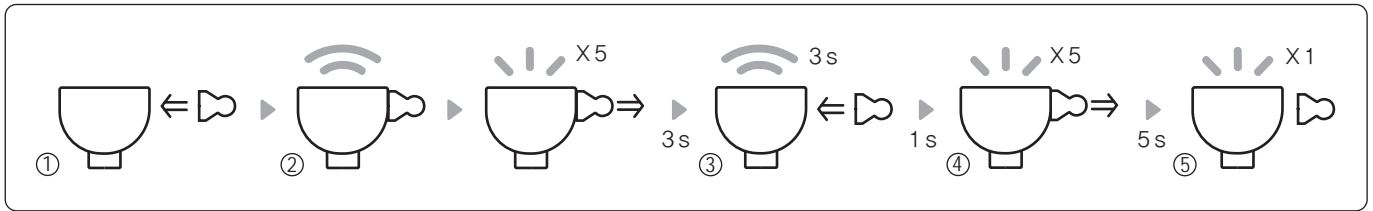
1. Unscrew the 3 M5 torx bolts from the Clean CAP, and remove the top cover.
2. Position the Clean CAP underneath the head of the bracket. Place the top cover over the head of the bracket. Align the holes of the top cover, the bracket, and the Clean CAP. Screw M5 torx bolts into each hole.
3. Position the bracket on the inner side of the waste container. Using the bracket, mark 4 holes where the bracket is to be installed.
4. Using a power drill with a M10 drill bit, drill the holes according to the marked location.
5. Position the bracket on the side of the waste container so that the holes are properly aligned. Insert a M10 bolt through each hole.
6. Place a M10 washer, followed by a M10 nut on each bolt. Tighten the nuts using a wrench. Fasten a M10 bolt cap on each bolt.

## Clean CAP Activation

### How to check the Clean CAP's status – ON/OFF

1. Place the magnet on the indent located along the side of the Clean CAP.
  - A. If the LED light **turns on immediately** for 1 second – Clean CAP OFF
  - B. If the LED light blinks once **after 1 second** – Clean CAP ON
2. Take the magnet off after the LED light turns on or blinks so that the Clean CAP returns to its existing ON/OFF status.

## How to turn the Clean CAP ON

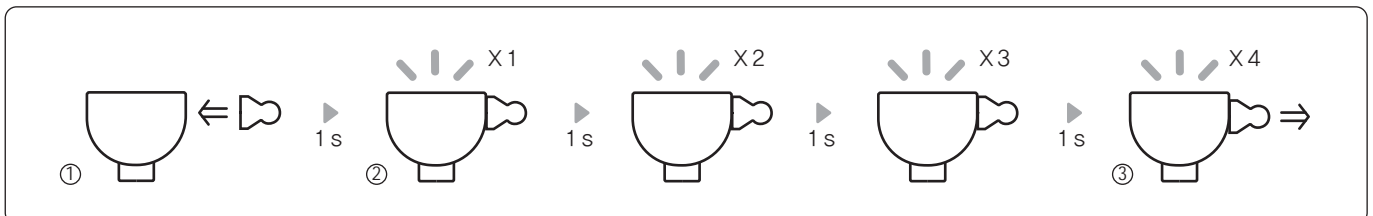


**NOTE** Avoid performing any procedures within ten minutes after turning the Clean CAP ON.

**NOTE** If the user fails to perform the correct procedure while turning the Clean CAP ON, the Clean CAP will return to its existing OFF status.

1. Place the magnet on the indent located along the side of the Clean CAP.
2. The LED light will **immediately turn on** for 1 second. After, the LED light will blink 5 times. Take the magnet off after the LED light starts blinking.
3. **3 seconds after it finishes blinking**, the LED light will turn on for 3 seconds. Place the magnet on the indent when the LED light turns on.
4. **1 second after placing the magnet on the indent**, the LED light will blink 5 times. Take the magnet off after the LED light starts blinking.
5. **5 seconds after it finishes blinking**, the LED light will blink once to confirm that the Clean CAP is ON.
6. After the Clean CAP is turned ON, it will automatically transmit data to the server. The Clean CAP cannot detect the magnet during this transmission period.

## How to turn the Clean CAP OFF

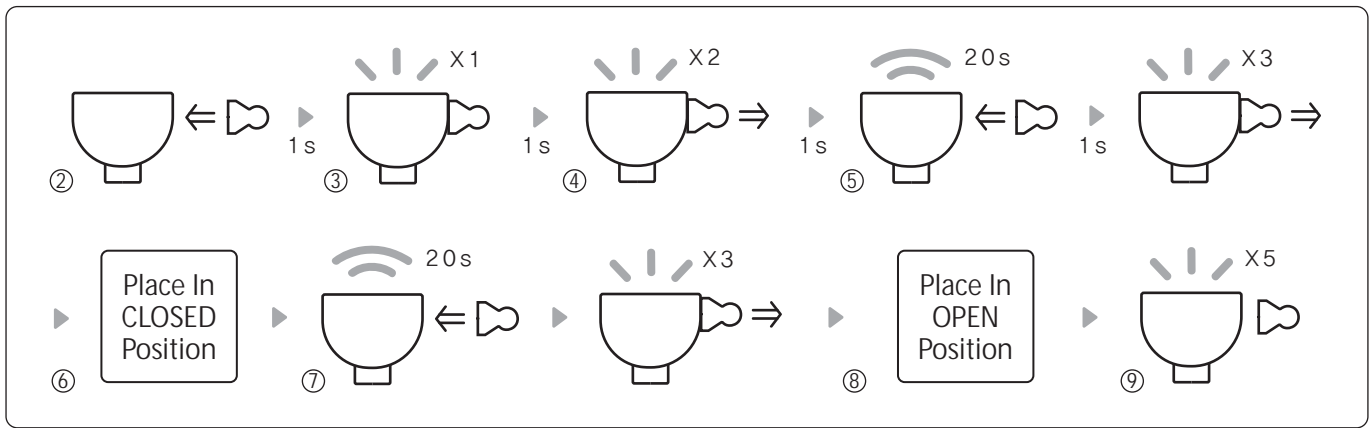


**NOTE** Avoid performing any procedures within ten minutes after turning the Clean CAP OFF.

**NOTE** If the user fails to perform the correct procedure while turning the Clean CAP OFF, the Clean CAP will return to its existing ON status.

1. Place the magnet on the indent located along the side of the Clean CAP.
2. **After 1 second**, the LED light will blink 1 time, 2 times, 3 times, and 4 times with 1 second intervals in between. This sequence will occur 3 times.
3. Take the magnet off while the LED light is blinking 4 times.
4. The Clean CAP will automatically transmit data to the server before turning OFF. The Clean CAP cannot detect the magnet during this transmission period.

## How to calibrate the Clean CAP



**NOTE** Users only need to perform the Clean CAP calibration procedure only when the Clean CAP is installed on a top lid of a waste container that opens and closes.

1. Check that the Clean CAP is ON.
2. Place the magnet on the indent located along the side of the Clean CAP.
3. **After 1 second**, the LED light will start blinking consecutively 1 time, 2 time, 3 times, and 4 times with 1 second intervals in between. This sequence will occur 3 times.
4. Take the magnet off while the LED light is blinking 2 times.
5. **After 1 second**, the LED light will turn on for 20 seconds. Place the magnet on the indent while the LED light is on. After 1 second, the LED light blink 3 times to indicate that it is ready for CLOSED position calibration. Take the magnet off while the LED light is blinking.
6. Close the top lid of the waste container within 5 seconds. The Clean CAP will take another 15 seconds to calibrate the CLOSED position.
7. **After successful calibration**, the LED light will turn on for 20 seconds. Place the magnet on the indent for 1 second while the LED light is on. The LED light will blink 3 times to indicate that it is ready for OPENED position calibration. Take the magnet off while the LED light is blinking.
8. Place the Clean CAP in OPEN position within 5 seconds. The Clean CAP will take another 5 seconds to calibrate the OPEN position.
9. The LED light will blink 5 times to indicate successful calibration.
10. After the Clean CAP has successfully calibrated, it will automatically transmit data to the server. Do not place the magnet on the indent during the transmission period, which may take up to 5 minutes.

## Regulatory notices

---

This equipment complies with FCC/IC regulations.

FCC: Part 22, Part 24

IC: RSS-132, RSS-133

Furthermore, this equipment complies with FCC/IC radiation exposure limits set forth for uncontrolled environments.

This equipment should be installed and operated with minimum distance 20cm between the radiating element of this device and the user.

Changes or modifications to this equipment may cause harmful interference unless the modifications are expressly approved in the instruction manual. Users may lose the authority to operate this equipment if an unauthorized change or codification is made.

Ce équipement est en conformité avec règlements FCC/IC.

Par ailleurs, ce équipement répond aux limites de la FCC/IC sur l'exposition aux rayonnements établies pour un environnement non-contrôlé.

Ce équipement doit être installé et opéré à une distance minimum de 20 cm entre les éléments de radiation et l'utilisateur.

Les changements ou les modifications à cet équipement peuvent causer des interférences nuisibles, à moins que les modifications n'aient été expressément approuvées dans le manuel d'instructions. Les utilisateurs peuvent perdre le droit de faire fonctionner cet équipement si une modification ou une codification non autorisée est effectuée.