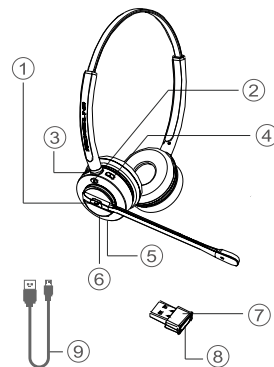


INSPIRE 16

PROFESSIONAL WIRELESS HEADSET

User Guide



1. Call Answer/End & Play/Pause
2. Power ON/OFF & Bluetooth Pairing & Mute
3. Volume -
4. Volume +
5. USB-C Charge Port
6. LED Indicator
7. Bluetooth Adapter
8. Bluetooth Adapter Button
9. USB Cable

Function and Buttons

Button/Port/LED	Function
1	Call Answer/End & Play/Pause Music Press the button to answer the call. Double-tap the button to reject the call. Press and hold the button for 1 second to end the call. Double-tap the button to switch between active and held call. Press and hold the button for 1 second to activate the voice assistant on you mobilephone when not on a call. Press the button to play/pause music.
2	Power ON/OFF & Mute & Bluetooth Pairing Press and hold the button for 3 seconds to power on/off. Press and hold the button for 4 seconds to pair the Bluetooth devices. Press the button to mute/unmute the microphone when on a call.
3	Volume - Press to decrease the volume when on a call or playing music.
4	Volume + Press to increase the volume when on a call or playing music.
5	USB-C Charge Port USB-C port, plug the USB cable to this port.
6	LED Indicator Show the status of power on/off, mute on/off, Bluetooth pairing and connection, battery and charging status.
7	Bluetooth Adapter Connect the headset to PC via Bluetooth connection.
8	Bluetooth Adapter Button Press and hold the button for 10 seconds to reset the connection if the adapter is bought separately.
9	USB Cable Connect the USB port of the headset to PC.

Wearing Instruction

INSPIRE 16 can be worn on the left or right. And you can adjust it to the comfortable fit. Please make sure to position the microphone 1 or 2 fingers away from your mouth.

Bendable Boom



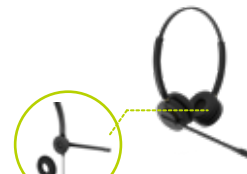
Adjustable Headband



Flexible Rotation



Replaceable Ear Cushion



Installation Instruction

1. Turn on/off the headset

Press and hold Power ON/OFF button (#2) for 3 seconds to turn the headset on or off.

You hear "power on" and battery level and the LED indicator (#6) will light up blue for 3 seconds when it turns on.

You hear "power off" and battery level and the LED indicator (#6) will light up red for 3 seconds when it turns off.

The headset will turn off automatically if there is no Bluetooth connection in 5 minutes.

2. Connect to power and charge the headset

Plug the USB cable (#9) to USB-C charge port (#5) of the headset, and then, connect the other end of the USB cable (#9) into any USB port on your PC or USB power adapter (not included) to charge battery.

The LED indicator (#6) shows the following colors in different battery levels when the headset is being charged.

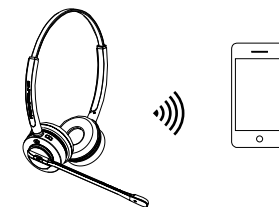
LED Indicator	Battery Status
Solid blue	Battery high
Solid blue and red	Battery medium
Solid red	Battery low

The LED indicator (#6) flashes red color when the battery is low.

It takes approximately 3 hours to charge the battery and the LED indicator (#6) turns off automatically when the headset is fully charged.

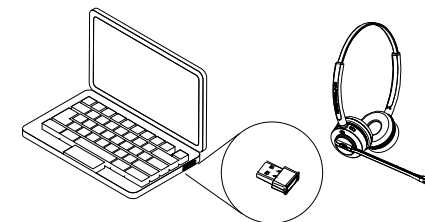
3. Connect to Bluetooth-enabled mobile devices

Press and hold Power ON/OFF button (#2) for 4 seconds to turn the headset on and begin pairing the mobilephone. You hear "pairing" and the LED indicator (#6) flashes blue and red. Enable Bluetooth on your phone and search for Bluetooth devices. Select "ADDA INSPIRE 16" as Bluetooth device. When pairing is successful, you hear "Your phone is connected." *** The headset will connect with the last successfully connected Bluetooth device automatically.



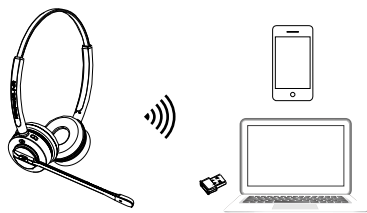
4. Connect to PC using Bluetooth adapter

Turn the headset on and plug Bluetooth adapter (#7) into a USB port on your PC. Bluetooth adapter (#7) is pre-paired to the headset. You hear "connected" when pairing is successful. Make sure to set "ADDA BT210" as default recording and playback devices in the sound settings of your PC and softphone.



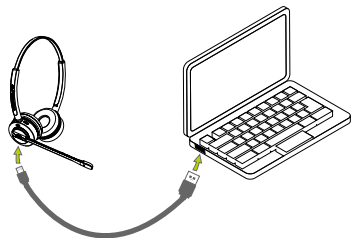
5. Connect to PC and mobilephone simultaneously

Turn the headset on and pair the mobilephone first. When pairing is successful, you hear "Your phone is connected."
And then, plug Bluetooth adapter (#7) into a USB port on your PC.
Bluetooth adapter (#7) is pre-paired to the headset. You hear "connected" when pairing is successful. Now the headset is paired to PC and mobilephone simultaneously.



6. Connect to PC using USB cable

Make sure to turn the headset on, and then plug the headset into a USB port on your PC using USB cable (#9). Select "ADDA INSPIRE 16" as default recording and playback devices in the sound settings of your PC and softphone. Please note your headset is charged at this time.



Usage Instruction

1. Answer/end or reject a call

Press the Call Answer/End button (#1) to answer a call. Double-tap the button (#1) to reject a call. Press and hold the button (#1) for 1 second to end a call. Double-tap the button (#1) to redial the last number that was called.
*** Call answer/end also work on Skype for Business and Microsoft Teams.

2. Handle multiple calls

Double-tap the Call Answer/End button (#1) to reject the incoming call and continue the current call. Press the button (#1) to answer the incoming call and hold the current call. Double-tap the button (#1) to switch between active and held call.

3. Mute/unmute the microphone

Press the Power ON/OFF button (#2) to mute the microphone when on a call. You hear "mute on" and the LED indicator (#6) shows solid red. Press the Power ON/OFF button (#2) to unmute the microphone when on a call. You hear "mute off" and the LED indicator (#6) shows solid.

4. Adjust the volume

Press the volume + (#4) button to increase the volume. Press the volume - (#3) button to decrease the volume.

5. Play/pause music

Press the Call Answer/End button (#1) to pause music when listening to music. Press the Call Answer/End button (#1) to play music.

6. Activate the voice assistant on your mobile phone

Press and hold the button for 1 second to activate the voice assistant on your mobilephone when not on a call.

7. Activate voice prompt

Voice prompt will be activated automatically when the headset is powered on.

Trouble Shooting

The Bluetooth headset can't be paired with PC.

-Make sure to choose "ADDA BT210" as default recording and playback devices in the sound settings of your PC and softphone.
-Re-plug the Bluetooth adapter.

The headset does not work when it connects to PC using USB cable.

-Please make sure to the headset is switched on first before it is connected to PC.
- Also choose "ADDA INSPIRE 16" as default recording and playback devices in the sound settings of your PC and softphone.

The headset has been paired successfully but has intermittent sound.

-Please note some factors like obstacles, signal strength and wireless congestion may affect the sound signal transmission.

Usage Attention

Make sure to store the headset when it is powered off.

The headset is not waterproof. Don't put it in humid environments.

Extreme temperatures may affect the battery life and performance.

Accessories

INSPIRE 16 Bluetooth Headset x1



Bluetooth Adapter X1



User Manual X1



USB-C Charging Cable x1



Headset Bag X1



Warranty Card X1



Limited Warranty

ADDASOUND offers a two-year limited warranty. Please visit our website for more warranty details: www.addasound.com.

FCC Compliance Information

1. INSPIRE 16 FCC ID : 2AHSPINSPIRE16
2. This equipment complies with FCC RF radiation exposure limits set forth for an uncontrolled environment.
3. This device complies with part 15 of the FCC rules. Operation is subject to the following two conditions: (1) this device may not cause harmful interference, and (2) this device must accept any interference received, including interference that may cause undesired operation.
4. NOTE: The manufacturer is not responsible for any radio or TV interference caused by unauthorized modifications to this equipment. Such modifications could void the user's authority to operate the equipment.
5. NOTE: This equipment has been tested and found to comply with the limits for a Class B digital device, pursuant to part 15 of the FCC Rules. These limits are designed to provide reasonable protection against harmful interference in a residential installation. This equipment generates uses and can radiate radio frequency energy and, if not installed and used in accordance with the instructions, may cause harmful interference to radio communications. However, there is no guarantee that interference will not occur in a particular installation. If this equipment does cause harmful interference to radio or television reception, which can be determined by turning the equipment off and on, the user is encouraged to try to correct the interference by one or more of the following measures:
- Reorient or relocate the receiving antenna.
- Increase the separation between the equipment and receiver.
-Connect the equipment into an outlet on a circuit different from that to which the receiver is connected.
-Consult the dealer or an experienced radio/TV technician for help.
- This device and its antenna(s) must not be co-located or operating in conjunction with any other antenna or transmitter.
6.This equipment complies with FCC radiation exposure limits set forth for an uncontrolled environment. This transmitter must not be co-located or operating in conjunction with any other antenna or transmitter.

RED Compliance Information

1. RF information:
Bluetooth : 2402-2480MHz
Max power : 0.34dBm
Battery:270mAh,3.7V,4.2V
2. CAUTION : RISK OF EXPLOSION IF BATTERY IS REPLACED BY AN INCORRECT TYPE. DISPOSE OF USED BATTERIES ACCORDING TO THE INSTRUCTIONS.
3. Charger description: The product does not come with a charger as standard. It is recommended that the user can use the charger specification (5V 1A charger);The maximum operating temperature of the product, please refer to : Ideal temperatures: 0°C to 45°C for operating.