

WiFi Switch Module User Manual

Package Includes

1x WiFi Switch Module
1x User Manual

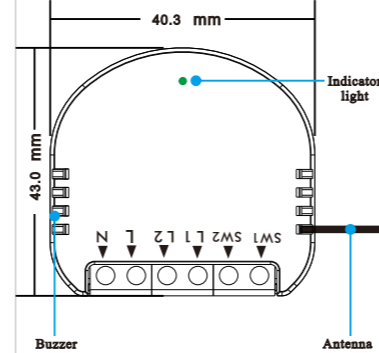
Specifications

Type	WiFi Switch Module
Model	TB41
Power supply mode	Neutral-Live Wire
Rated Voltage	AC100-250V~50/60Hz
Rated Power	INC1200W(Max) LED150W/Gang(Max)
Wireless Frequency	2.4GHZ
Wireless Standard	IEEE802.11 b/g/n
Size	40.3*43*22.5mm

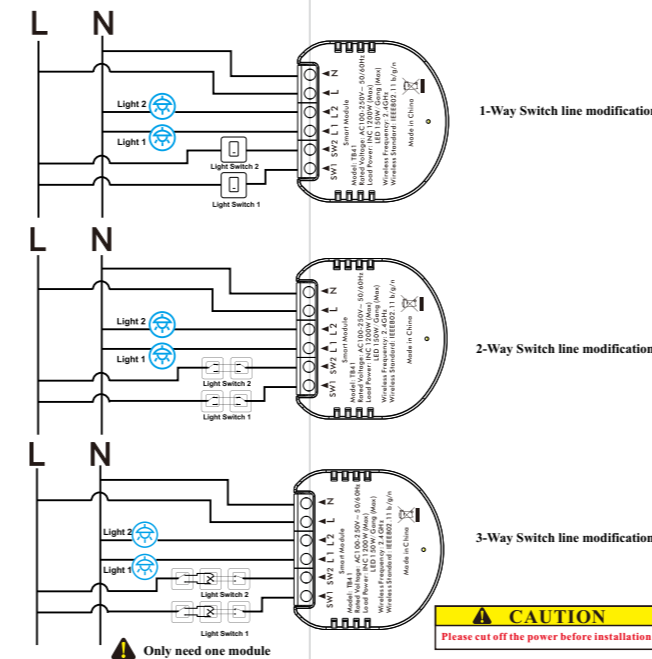
Indicator light meaning

Indicator	Status	Description
Buzzer sound	Di Di, Di Di, ...	Ready for connection (Default Mode Only)
Buzzer sound	Di Di, Di Di, Di Di, ...	Ready for connection (AP Mode Only)
Green light	Flash Rapidly (2 times or more)	Ready for connection (Default Mode Only)
Green light	Flash slowly (1 time every 2 S)	Ready for connection (AP Mode Only)

Product Diagram



Wiring Diagram



Install the "Smart Life" APP

Download the "Smart life"
1. Download and launch the "Smart life" App from the App Store or Google Play, or scan the QR code below.
(The free app "Smart Life" is compatible with mobile devices the support IOS8.0 above, Android 4.4 above)



2. Create a new account.
3. Connect you mobile device to a 2.4GHz Wi-Fi network.
Note: This product only support 2.4G networks.

FCC Warning

This device complies with part 15 of the FCC rules. Operation is subject to the following two conditions: (1) this device may not cause harmful interference, and (2) this device must accept any interference received, including interference that may cause undesired operation.

Changes or modifications not expressly approved by the party responsible for compliance could void the user's authority to operate the equipment.

NOTE: This equipment has been tested and found to comply with the limits for a Class B digital device, pursuant to part 15 of the FCC Rules. These limits are designed to provide reasonable protection against harmful interference in a residential installation. This equipment generates uses and can radiate radio frequency energy and, if not installed and used in accordance with the instructions, may cause harmful interference to radio communications. However, there is no guarantee that interference will not occur in a particular installation. If this equipment does cause harmful interference to radio or television reception, which can be determined by turning the equipment off and on, the user is encouraged to try to correct the interference by one or more of the following measures:

- Reorient or relocate the receiving antenna.
- Increase the separation between the equipment and receiver.
- Connect the equipment into an outlet on a circuit different from that to which the receiver is connected.
- Consult the dealer or an experienced radio/TV technician for help.

Radiation Exposure Statement

This equipment complies with FCC radiation exposure limits set forth for an uncontrolled environment. This equipment should be installed and operated with minimum distance 20cm between the radiator and your body.

Setup Guide

Easy Setup

- In the app, select the **+** icon. (Figure 1)
- Select the device type **Electrician**, and then tap **Switch(WI-FI)** (Figure 2)

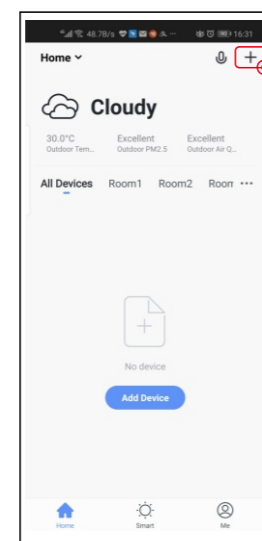


Figure 1

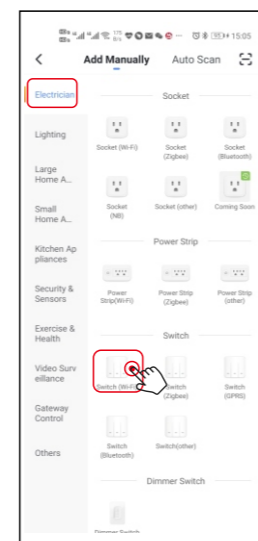
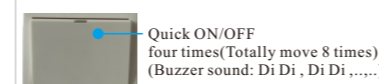
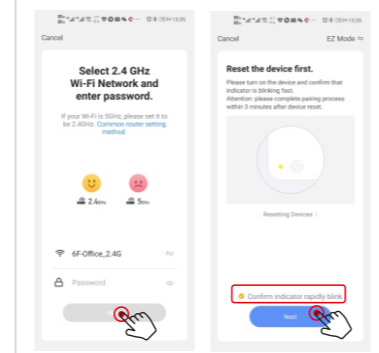


Figure 2

Default Mode(Recommend)



Step 1. Make sure the buzzer sound "Di Di, Di Di, Di Di," if not, Quick ON/OFF four times (Totally move 8 times) (Buzzer sound: Di Di, Di Di, ...)

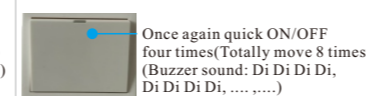


Step 2. Enter Wi-Fi password to join your network

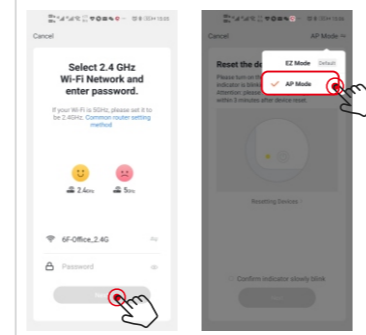
Step 3. Power on the device and confirm

Step 4. Follow the prompts to complete the next step.

AP Mode(Alternative)



Step 1. When the buzzer sound "Di Di, Di Di, Di Di, ..." once again quick ON/OFF four times, until the buzzer sound: "Di Di, Di Di, Di Di, Di Di, ..."



Step 2. Enter Wi-Fi password to join your network

Step 3. Select "AP Mode"

Step 4. Follow the prompts to complete the next step.

APP operation interface

