

# **USER MANUAL**

**Model: EP-DB1305**

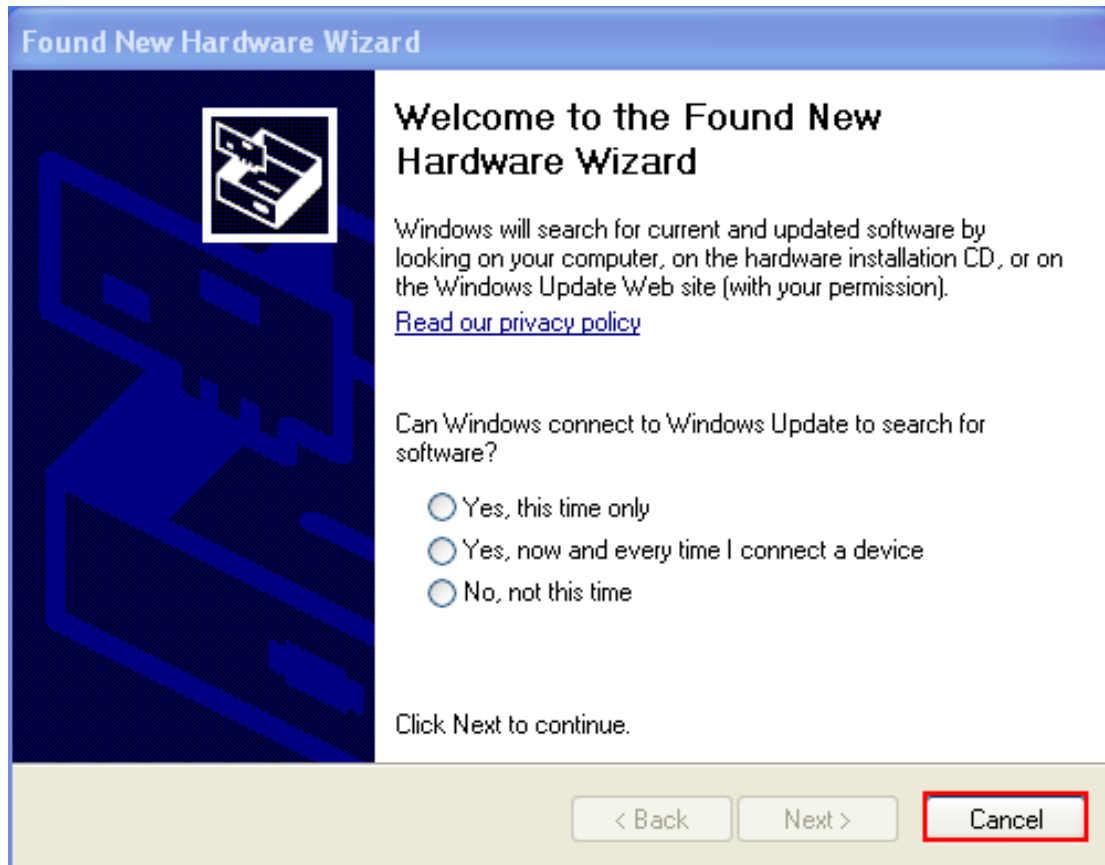
**Brand: EDUP**

## EDUP USB Wireless Adapter Quick Installation Guide

Note: This Manual based on WindowsXP & Windows7

### 1.WindowsXP

01. Once the wireless USB adapter be plugged into an USB port, the following message will appear on screen. Click "Cancel", As the following picture shows.(If it do not pop-up,Skip this step)

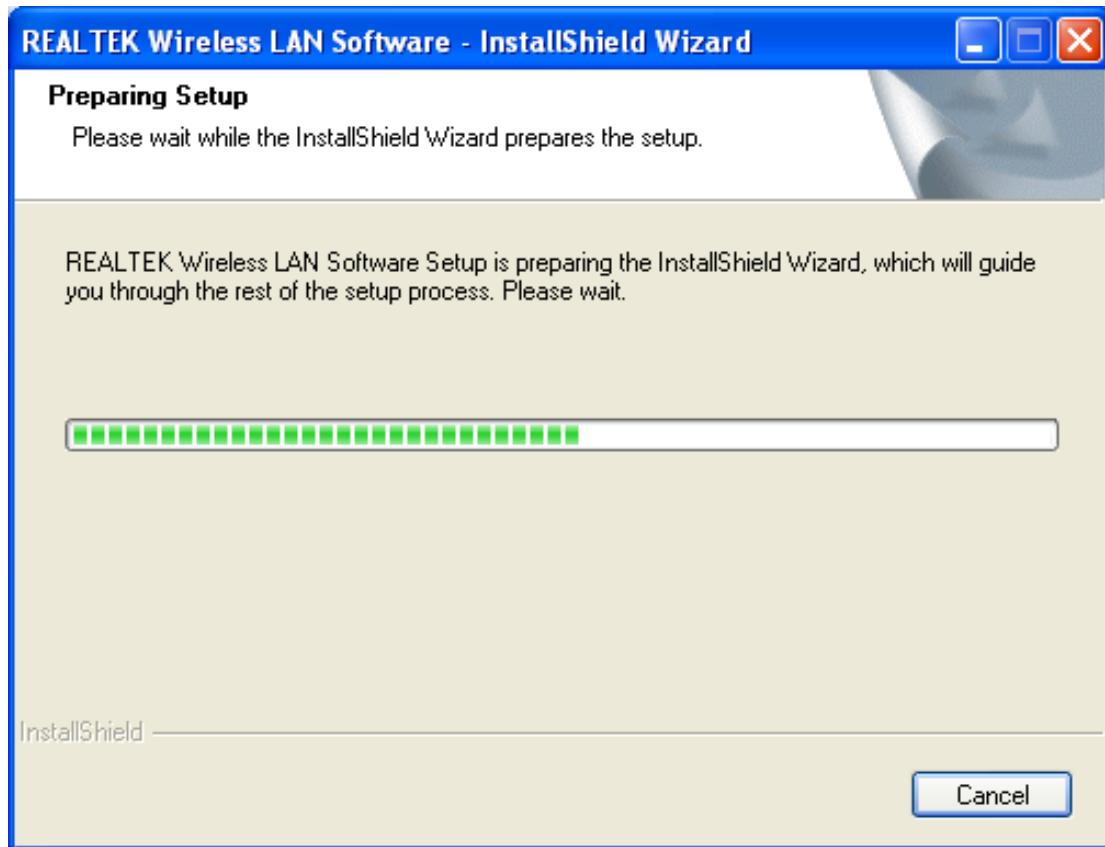


02. Please insert the disc into your CD-ROM drive. The disc should auto start, displaying the following window, If it does not start due to the system setting, open the browser window, find the Setup.exe file in your CD-ROM folder, click to run it.If you do not have CD-ROM Drive,you can download at EDUP official website:www.szedup.com


#### Devices with Removable Storage



03. Double click Setup.exe file, Software begin to initialization,then click the "next".There shows the installation progress.




04. Do not interrupt installation , Click “finish” to finish the driver installation.The computer automatically restart.

**REALTEK USB Wireless LAN Driver and Utility** 


**Setup Status**

REALTEK USB Wireless LAN Driver and Utility is configuring your new software installation.

Installing  
C:\...\{9C049509-055C-4CFF-A116-1D12312225EB}\data1.cab



InstallShield





Now installing REALTEK USB Wireless LAN Driver

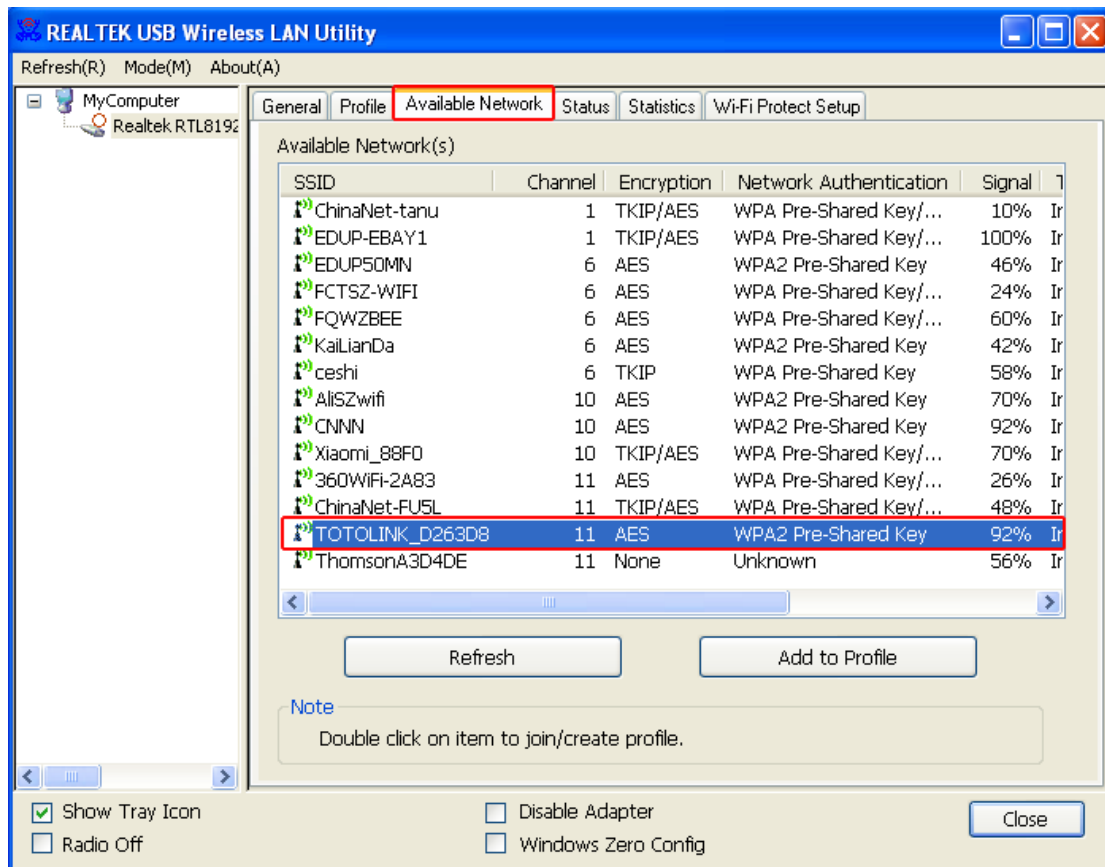


## Wireless Connection (two ways to realize)

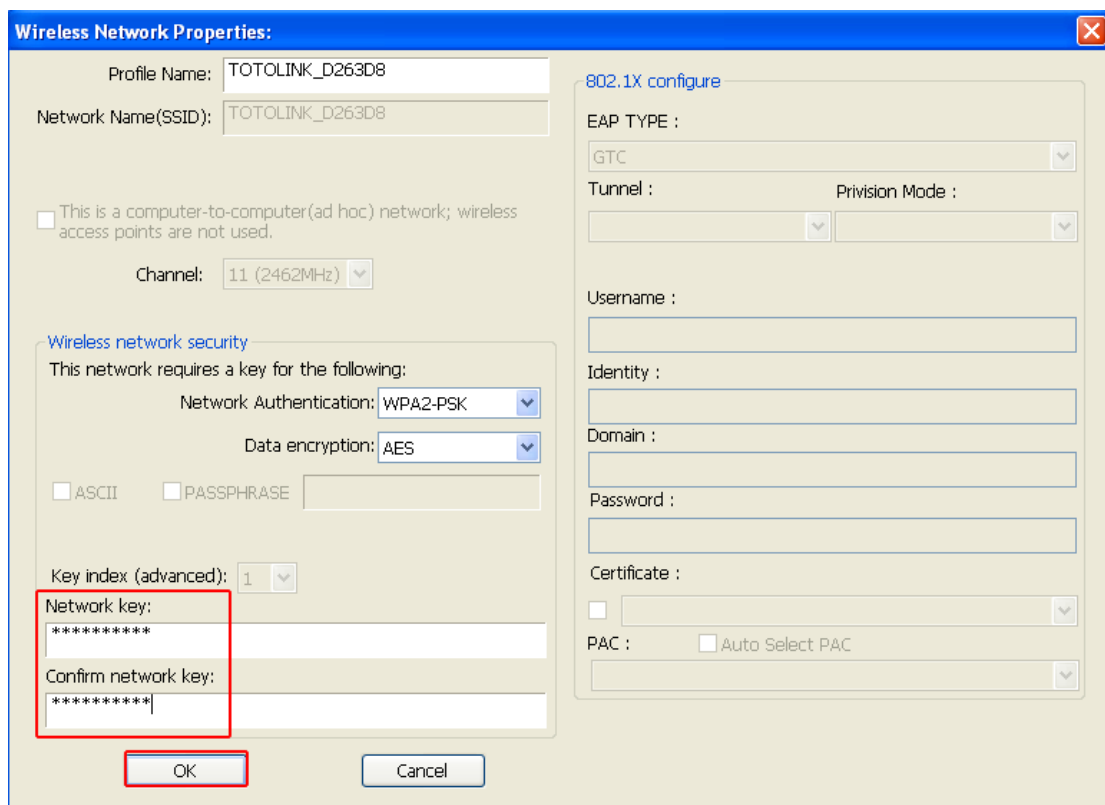
Wireless Connection 1:

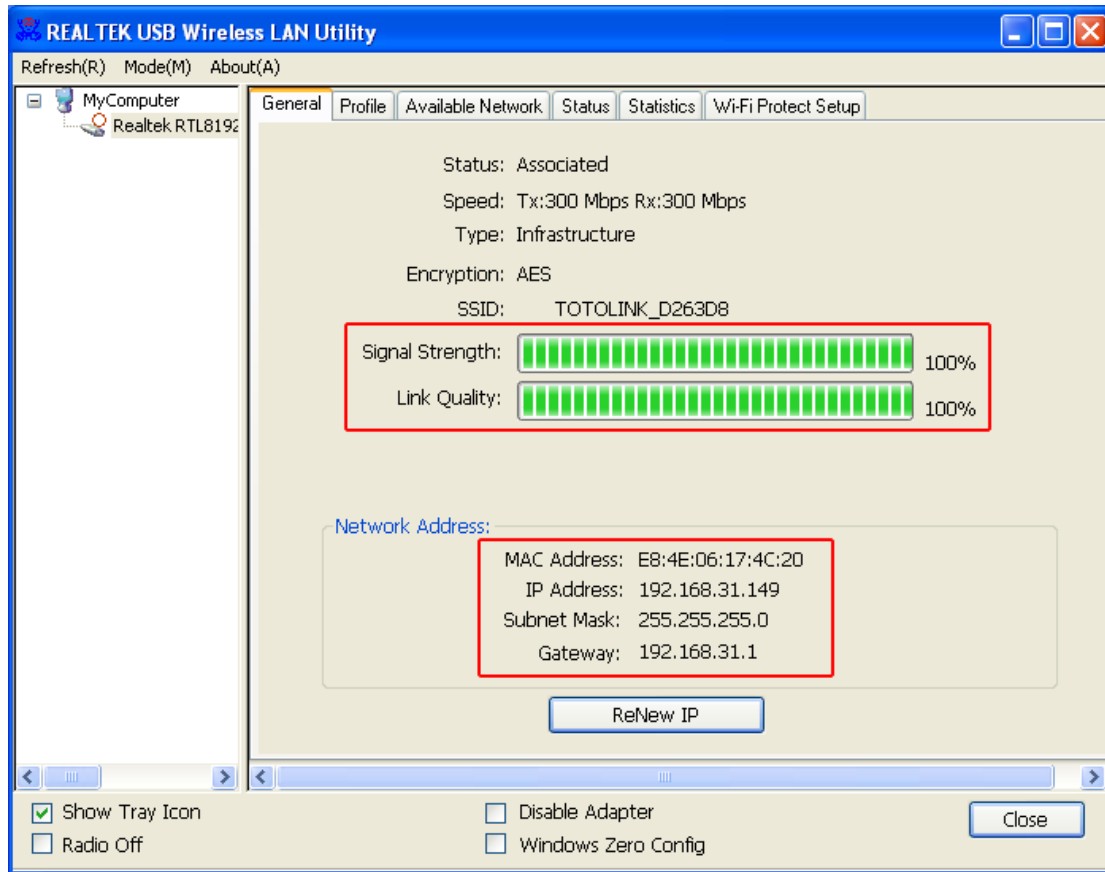
05. Click Icon  in the Windows system tray, which locates in the bottom-right corner of your

computer screen or double click , and pops up a message and click "Available Network" Double-click the utility icon or right click the icon and then select "View Available Wireless Networks" to launch the utility. the Wireless Network Connection window appears and displays your wireless network listed with the SSID you chose.





If the network security key hasn't been inputted before, enter the network's security key to access the wanted SSID. Type the encryption key that you wrote down earlier in both the Network key and Confirm network key boxes, and then click "ok".

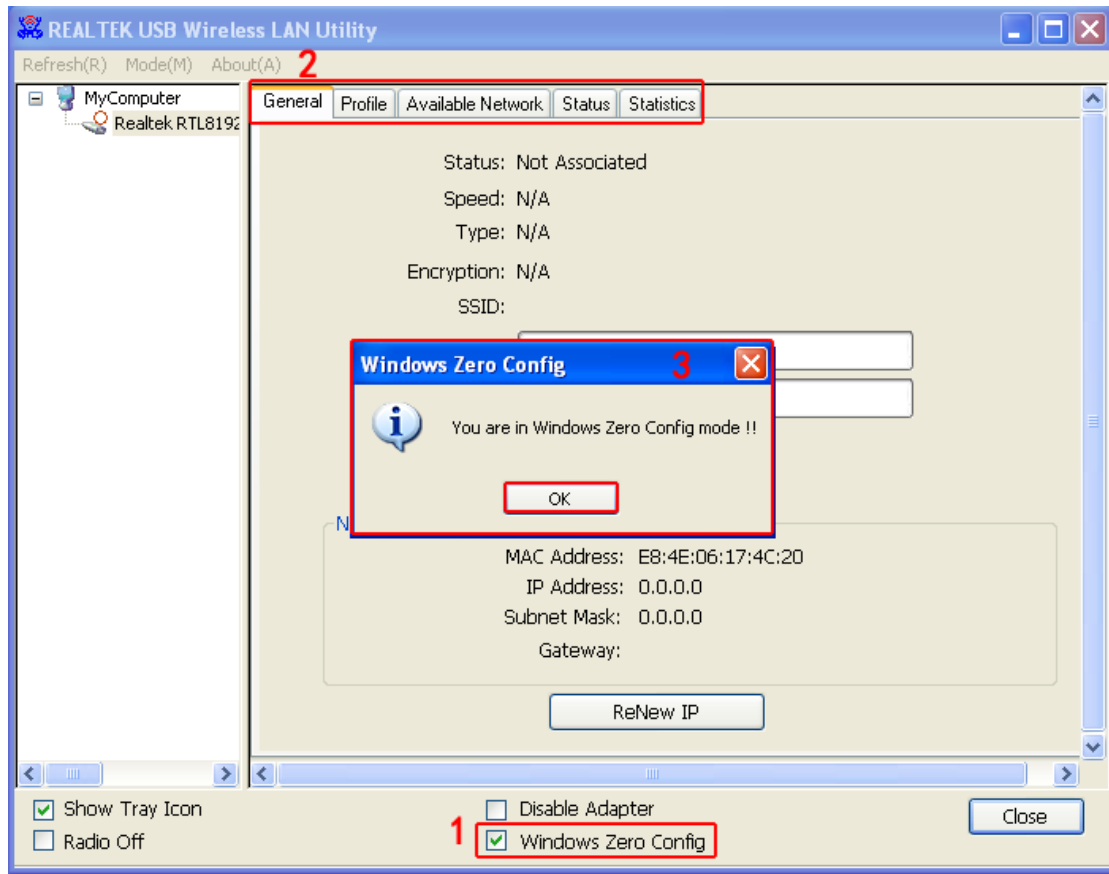





## Wireless Connection 2

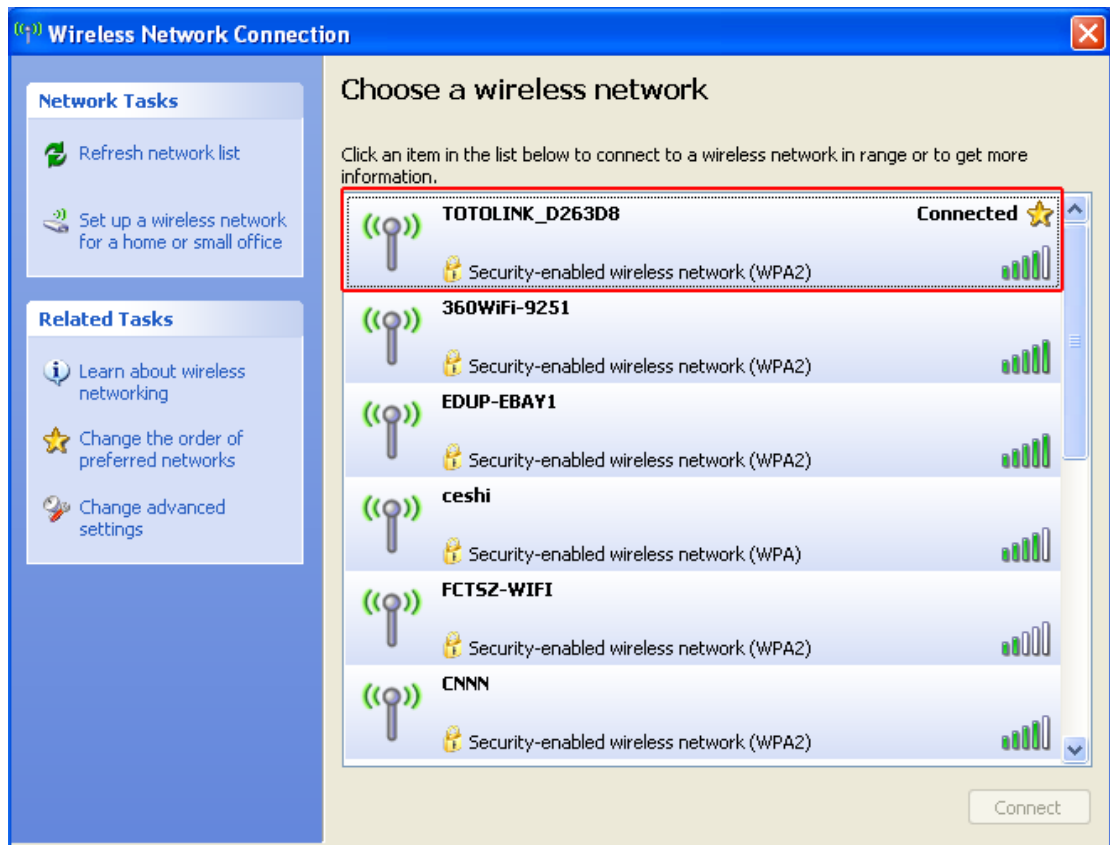
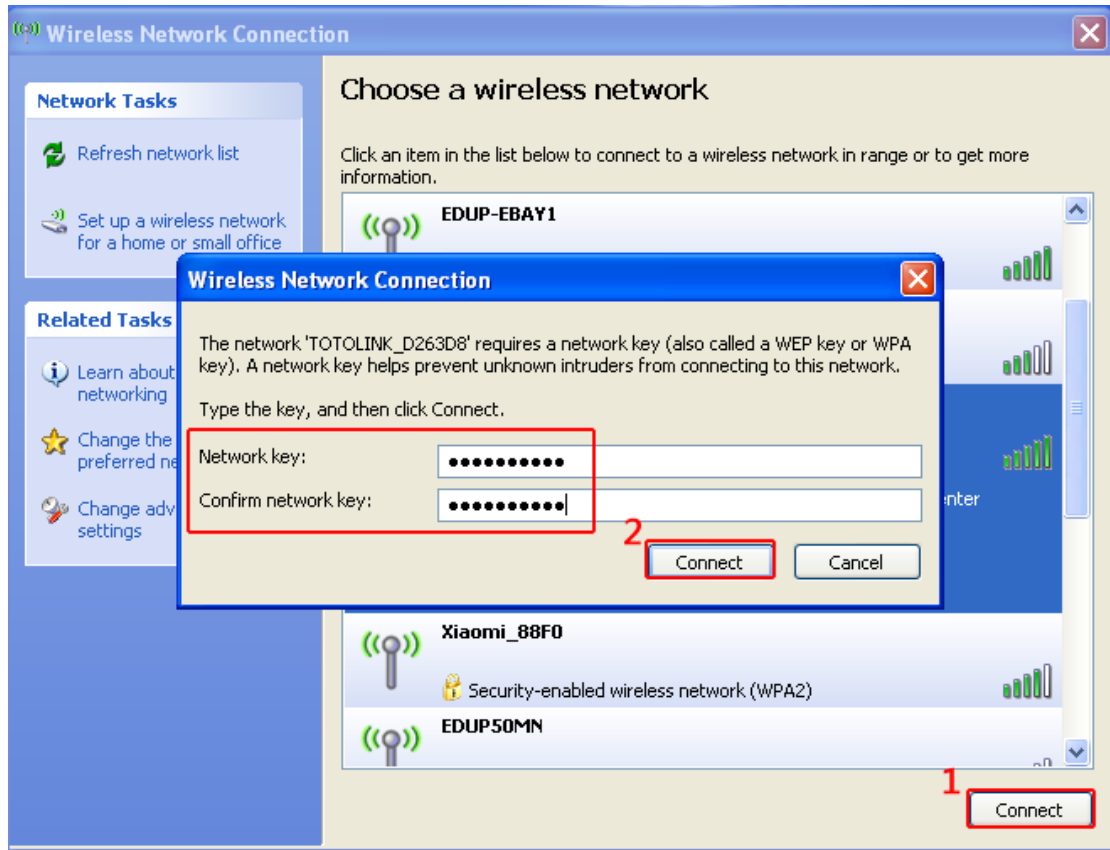
06. Click Icon  in the Windows system tray, which locates in the bottom-right corner of your

computer screen or double click , pops up a message and click "Windows Zero Config" (Figure1), pay attention to the change of figure2. Click "OK" on the pop up page as figure3



07. Double Click Icon  and then select the your preferred network, and then Double click, enter the network's security key to access the wanted SSID. Type the encryption key and then click "Connect".Or choose your wifireless signal and click connect as figure1,and enter the password and then click"connect as figure Now the Internet now is available.

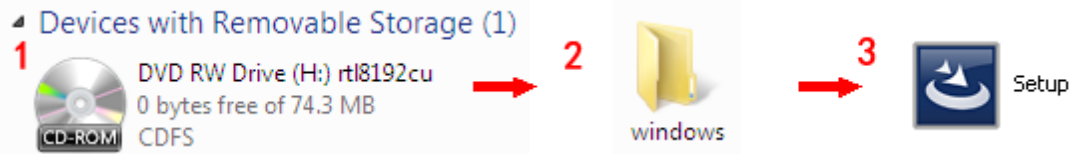




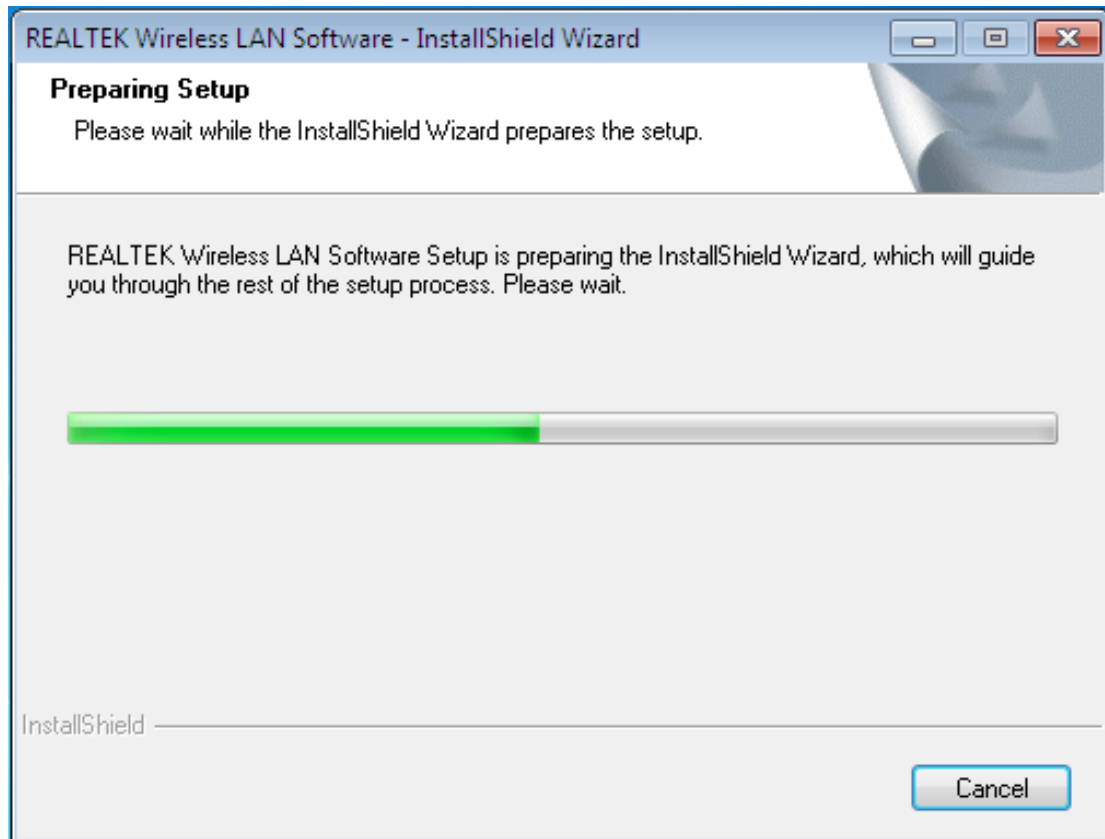
## 2.Windows7

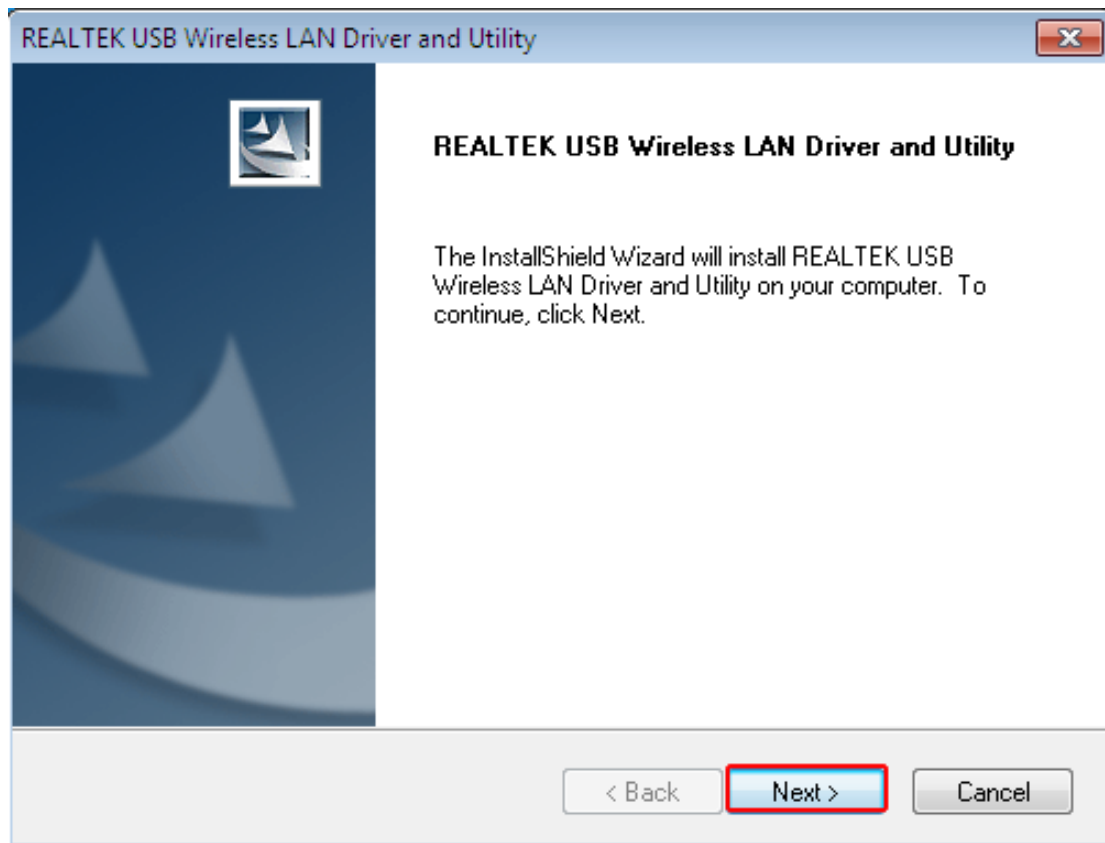
Please do as the following steps to setup:

01. Once the wireless USB adapter be plugged into an USB port (If do not have CD-ROM,please download on [www.szedup.com](http://www.szedup.com)), put in the CD and find windows file and Setup.exe.

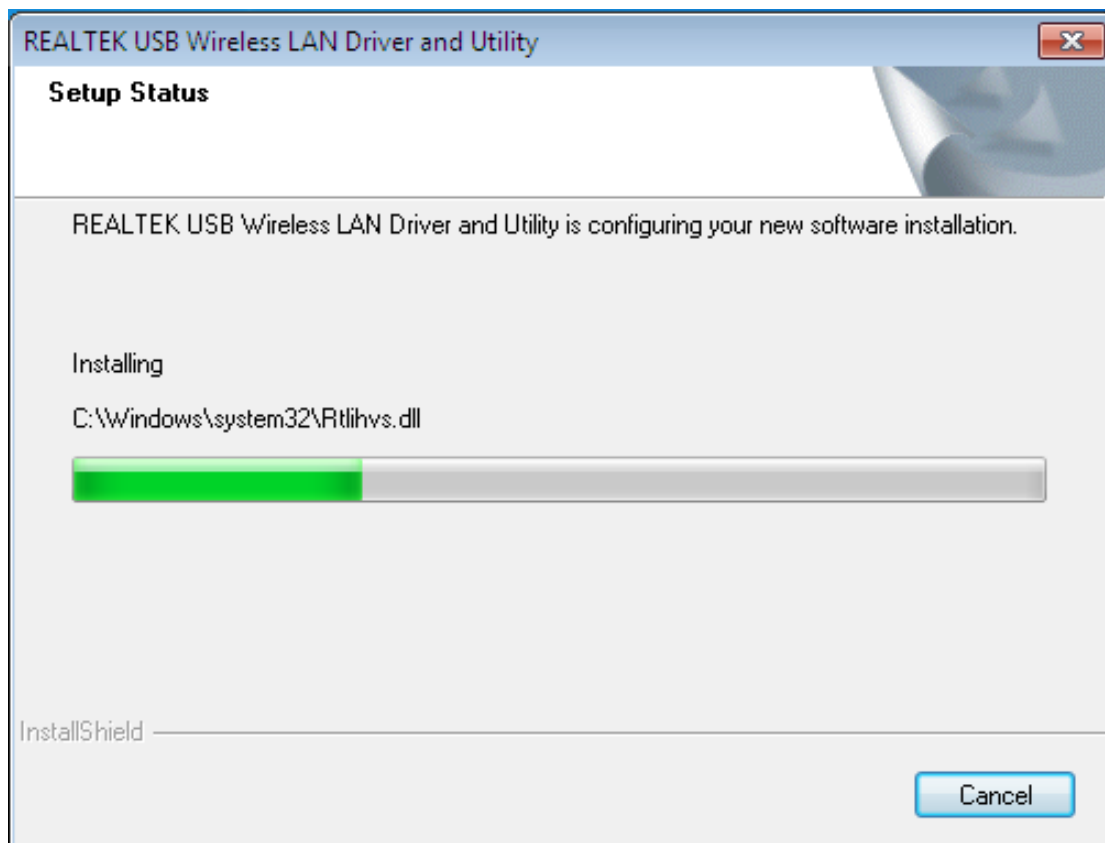


02. Double click Setup.exe file, Software begin to initialization,then click the “next”.There shows the installation progress.



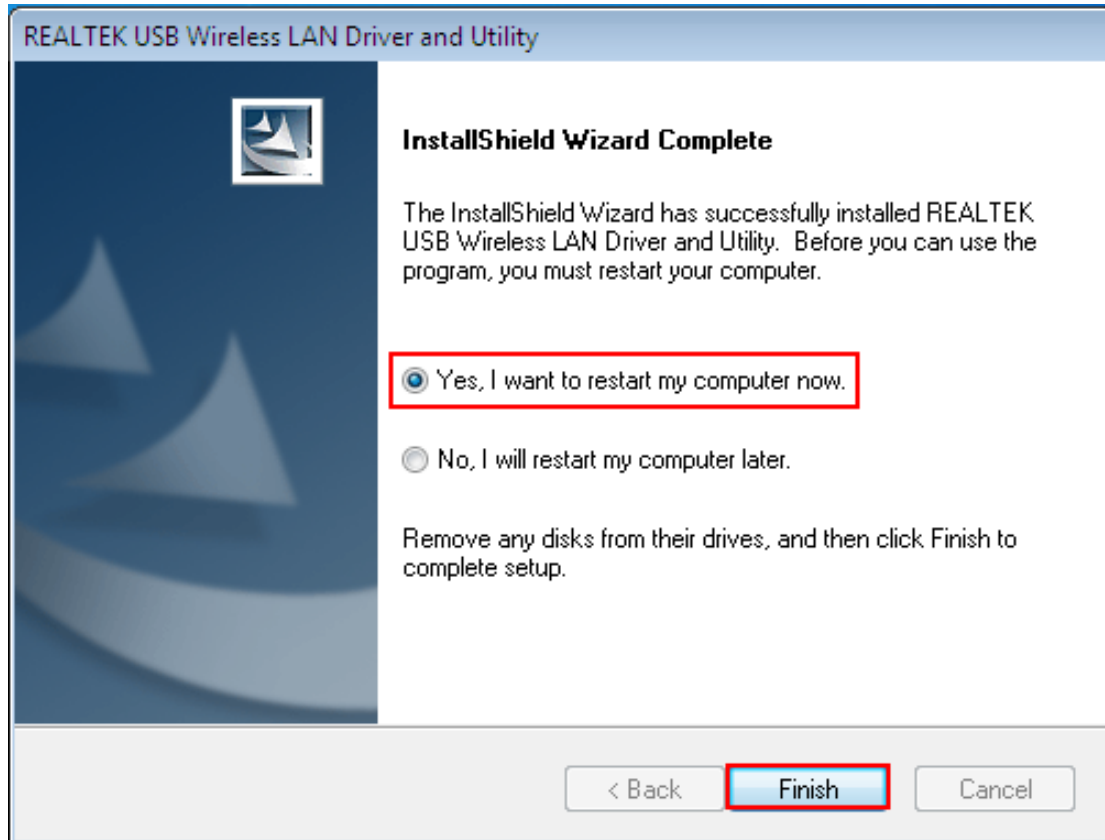


03. Do not interrupt installation, Click “finish” to finish the driver installation. The computer automatically restart.





Now installing REALTEK USB Wireless LAN Driver



Wireless connection (two ways to realize

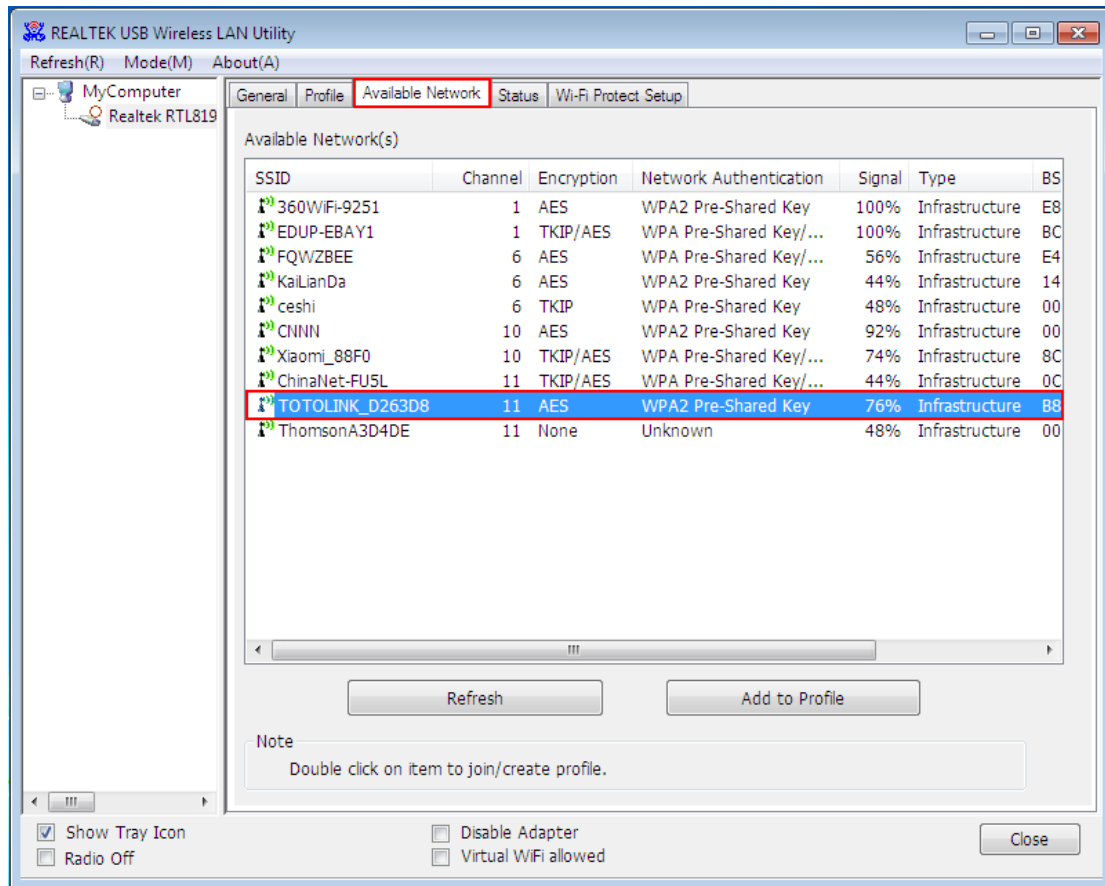
Wireless connection 1:



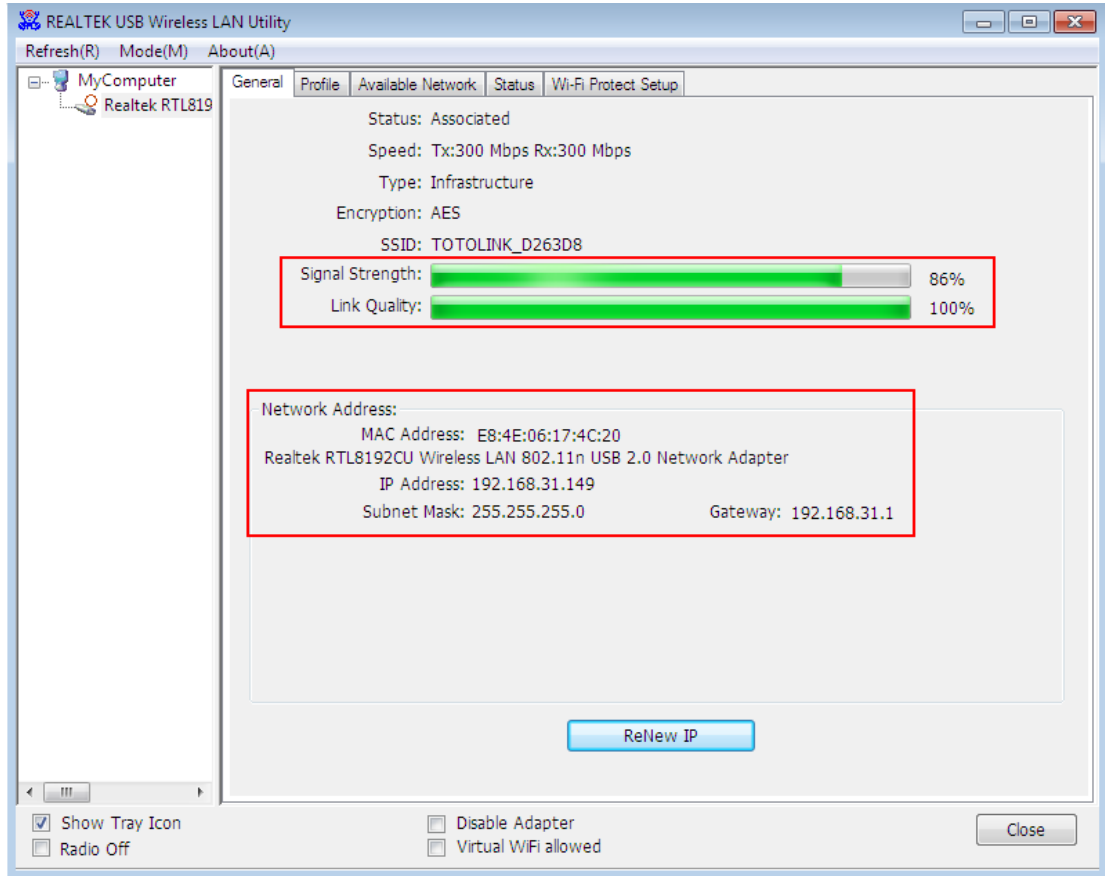
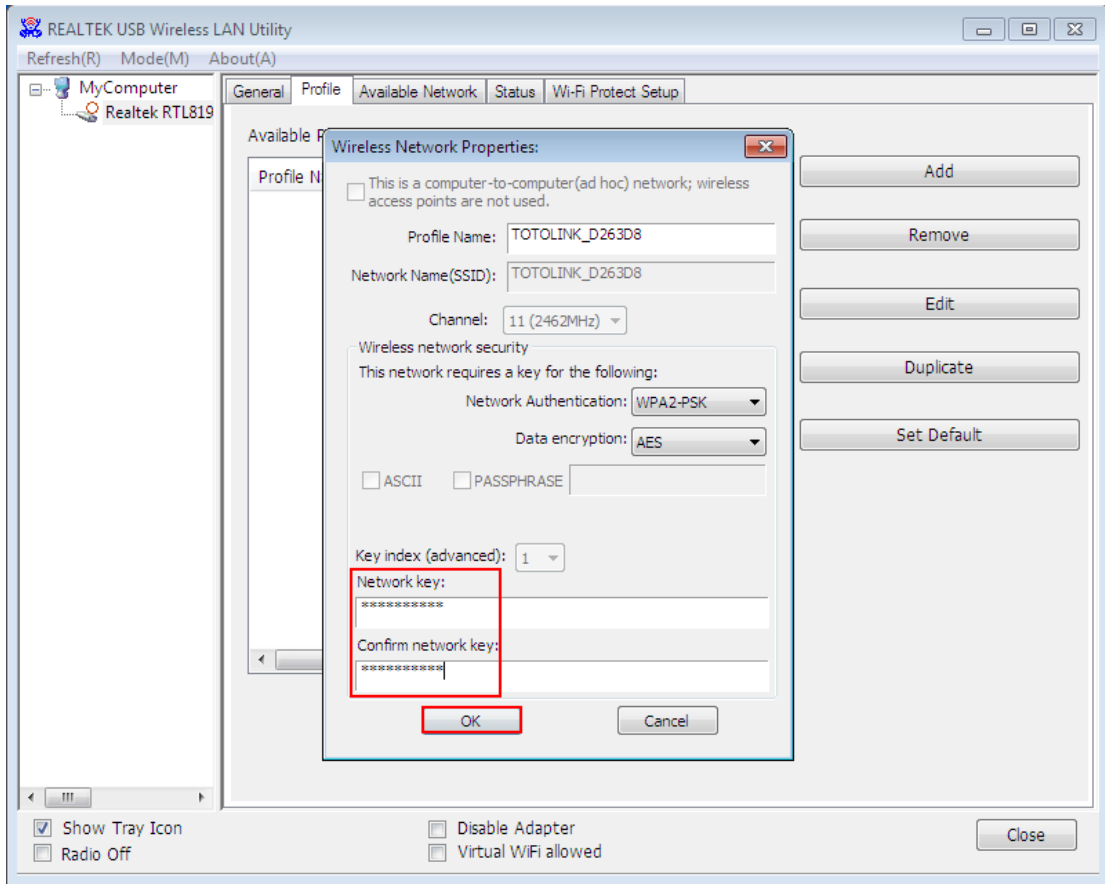
04. Click Icon in the Windows system tray, which locates in the bottom-right corner of




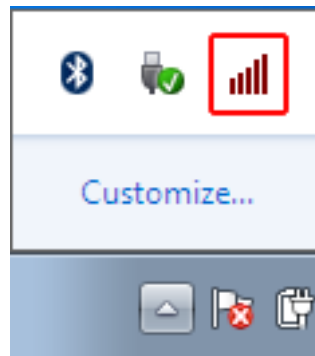
your computer screen or double click , and pops up a message and click "Available Network" Double-click the utility icon or right click the icon ,and the Wireless Network Connection window appears then double click the SSID you preferred.



Type the encryption key that you wrote down earlier in both the Network key and Confirm network key boxes, and then click “ok”.




Note:if there is no icon , please find it in the on right button,it have been hide as following



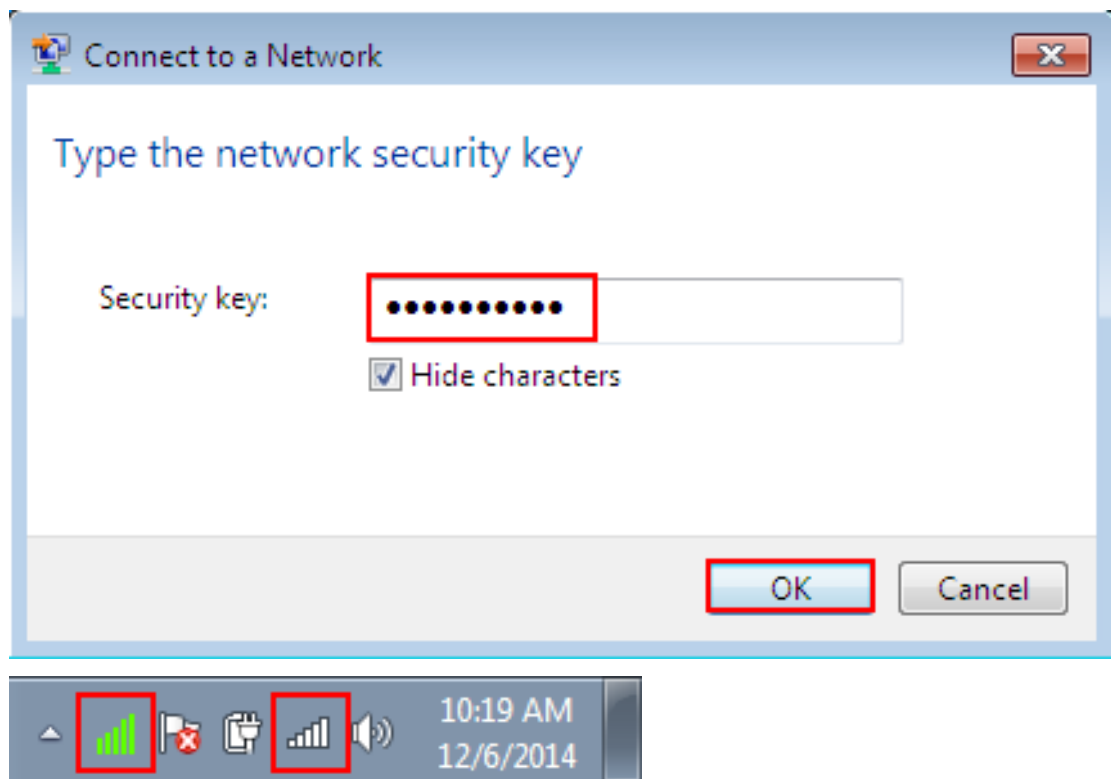
pictures shows:

Wireless Connection2.

05. Click Icon  which locates in the bottom-right corner of your computer screen,click the wireless network list and choose the SSID you preferred. and double click(Or click "Connect").无



Type the encryption key and then click "ok".





**FCC Caution.**

1.This device complies with part 15 of the FCC Rules. Operation is subject to the following two conditions: (1) This device may not cause harmful interference, and (2) this device must accept any interference received, including interference that may cause undesired operation.

2.Any Changes or modifications not expressly approved by the party responsible for compliance could void the user's authority to operate the equipment.

3.The device has been evaluated to meet general RF exposure requirement. The device can be used in portable exposure condition without restriction.

**Note:** This equipment has been tested and found to comply with the limits for a Class B digital device, pursuant to part 15 of the FCC Rules. These limits are designed to provide reasonable protection against harmful interference in a residential installation. This equipment generates uses and can radiate radio frequency energy and, if not installed and used in accordance with the instructions, may cause harmful interference to radio communications. However, there is no guarantee that interference will not occur in a particular installation. If this equipment does cause harmful interference to radio or television reception, which can be determined by turning the equipment off and on, the user is encouraged to try to correct the interference by one or more of the following measures:

-Reorient or relocate the receiving antenna.

-Increase the separation between the equipment and receiver.

-Connect the equipment into an outlet on a circuit different from that to which the receiver is connected.

-Consult the dealer or an experienced radio/TV technician for help.



#### CE Maintenance

- 1.The product shall only be connected to a USB interface of version USB2.0.
- 2.EUT Operating temperature range: 0° C to 40° C .
3. 5150-5250MHz can only be used indoor.

Input: DC 5V 500mA

Shenzhen EDUP Electronics Technology Co.,Ltd. hereby declares that this EDUP USB Wireless Adapter is in compliance with the essential requirements and other relevant provisions of Directive 1999/5/EC.a copy of the original declaration of conformity may be found or obtained at <http://www.edup.com>.

**C €0700**