

## 802.11AC Dual-Band Wi-Fi USB Adapter

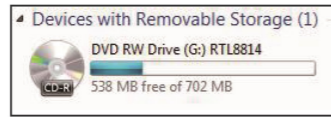
### Using Manual



Model: EP-AC1675

Note: This manual is based on the Windows7, please refer to the installation steps For others system.

1.Put in the CD and find windows file, please click up and find the Setup.exe .

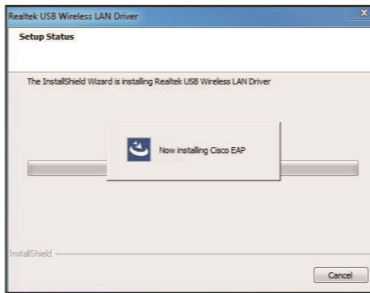


2.Double click the Setup.exe file, the driver starts to install, there shows the actual installation step screenshot.



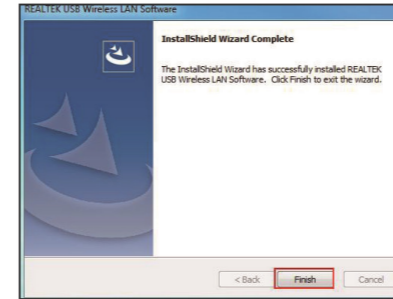
1

3.The installation status display interface is as follows.





2

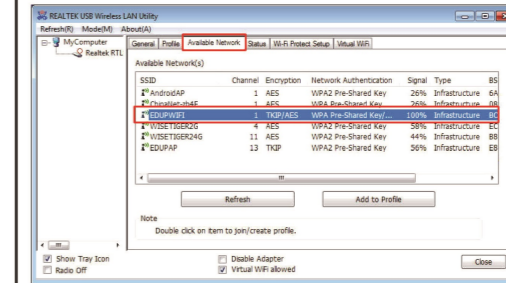
4.The installation completed interface is as follows.



Wireless connection (two ways to realize)  
Wireless connection 1:

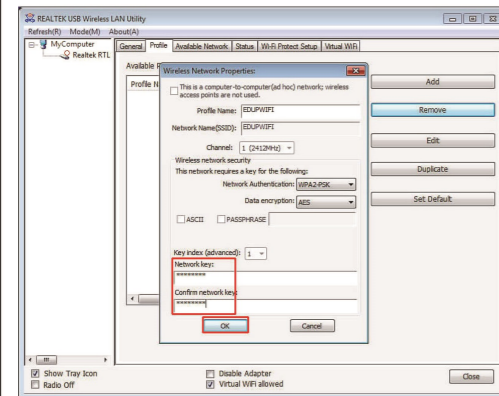
3

1.Click Icon  in the Windows system tray, which locates in the bottom-right corner of your computer screen or double click , and pops up a message and click "Available Network" Double-click the utility icon or right click the icon ,and the Wireless Network Connection window appears then double click the SSID you preferred.

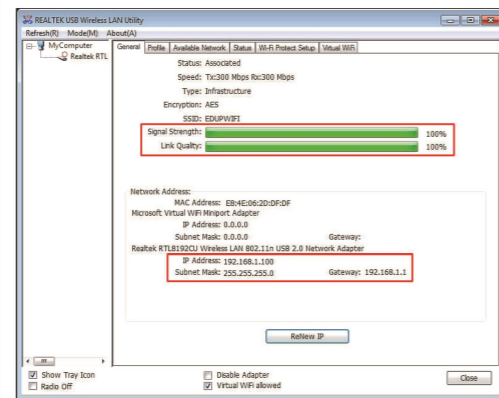


4

2.Type the encryption key that you wrote down earlier in both the Network key and Confirm network key boxes, and then click "ok".



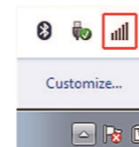
5




Note: if there is no icon , please find it in the on right bottom,it have been hide as following

6

Pictures Shows:



Wireless Connection2.

1. Click Icon  which locates in the bottom-right corner of your computer screen,click the wireless network list and choose the SSID you preferred. and double click (Or click "Connect").

7



Type the encryption key and then click "ok".

8



9

## FCC Statement

Any Changes or modifications not expressly approved by the party responsible for compliance could void the user's authority to operate the equipment.

This device complies with part 15 of the FCC Rules. Operation is subject to the following two conditions: (1) This device may not cause harmful interference, and (2) this device must accept any interference received, including interference that may cause undesired operation.

Note: This equipment has been tested and found to comply with the limits for a Class B digital device, pursuant to part 15 of the FCC Rules. These limits are designed to provide reasonable protection against harmful interference in a residential installation. This equipment generates uses and can radiate radio frequency energy and, if not installed and used in accordance with the instructions, may cause harmful interference to radio communications. However, there is no guarantee that interference will not occur in a particular installation. If this equipment does cause

harmful interference to radio or television reception, which can be determined by turning the equipment off and on, the user is encouraged to try to correct the interference by one or more of the following measures:

- Reorient or relocate the receiving antenna.
- Increase the separation between the equipment and receiver.
- Connect the equipment into an outlet on a circuit different from that to which the receiver is connected.
- Consult the dealer or an experienced radio/TV technician for help.

### Specific Absorption Rate (SAR) information

SAR tests are conducted using standard operating positions accepted by the FCC with the adapter transmitting at its highest certified power level in all tested frequency bands, although the SAR is determined at the highest certified power level, the actual SAR level of the adapter while operating can be well below the maximum value, in general, the closer you are to a wireless adapter antenna, the lower the power output.

Before a new model adapter is available for sale to the public, it must be tested and certified to the FCC that it does not exceed the exposure limit established by the FCC, Tests for each adapter are performed in positions and locations as required by the FCC.

For body worn operation, this adapter has been tested and meets the FCC RF exposure guidelines when used with an accessory designated for this product or when used with an accessory that contains no metal and that positions the adapter a minimum of 5 mm from the body.