



Professional Amplified Speaker System

Instruction Manual

Thank you very much for buying this speaker box, please kindly read instruction manual before operating the product

Product: Professional Amplified Speaker System

Model: BJC-15X2BT

Mark: Blackmore

Technical Specification:

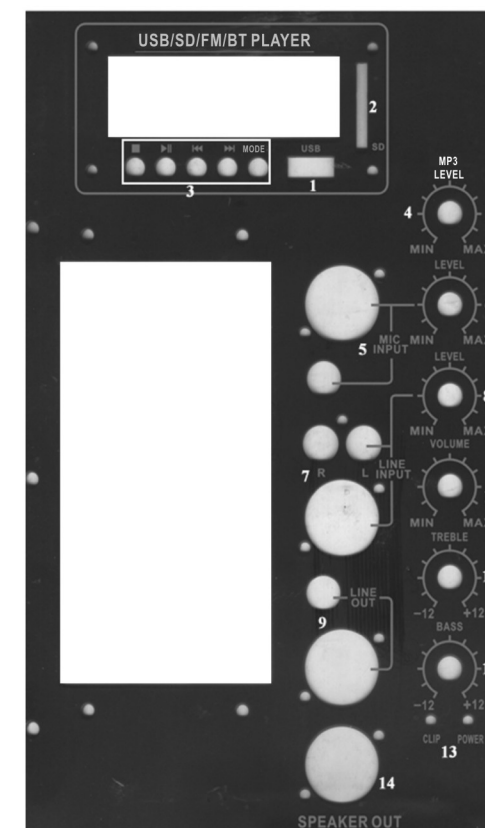
- 1.2-way amplified plastic loudspeaker.
2. Woofer : 15", 50Oz, 60mm VC.
Tweeter: 34mm VC, 13Oz
3. Frequency response: 50Hz-20KHz
4. Sensitivity: 96+-2dB
5. With USB,SD,FM and BT
6. Power: 3000W
7. Voltage: 120V/240V 50Hz/60Hz

Notes:

1. Please read the entire attached document carefully before using the device for your reference.
2. The power supply must match the demand of the device with reliable ground wire.
3. All covering signal should be complied with the demand of device
4. The device should be equipped far away high temperature, moisture and powerful electro and magnetic field.

Page 1

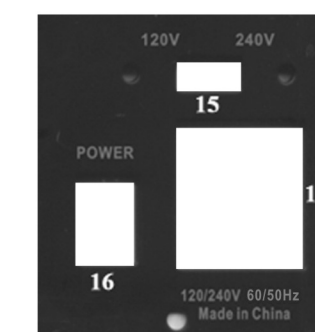
5. Please don't use the organic cleaner but dry soft cloth to clear the device.
6. When not in use, unplug the unit from the mains.
7. Set the unit to the lowest volume prior to switching it on.
8. Only use suitable means of transportation if you want to move the speaker box - BE WARE OF YOUR BACK!



1. USB port
2. SD port
3. USB,SD,FM and BT button
 - stop
 - ▶ play and pause
 - ◀ last song
 - ▶ next song

Page 2

- MODE:exchange between USB , SD, FM and BT function
4. MP3 level through this knob to adjust the volume of USB,SD,FM and BT
 5. MIC level to connect XLR and 6.35mm connector to put in signal to adjust the level of MIC input
 6. MIC level to adjust the level of MIC input
 7. Line input One XLR connector and one group stereo RCA input
 8. Line level to adjust the level of line input
 9. Line output to connect XLR and 6.35mm connector to put out signal
 10. Master volume to adjust the volume of speaker box
 11. Bass
 12. Treble
 13. Power and clip indicator
 14. Speakon out to connect another passive speaker box



15. Exchange of power from 120V to 240V
16. Power switch
17. Power connector

Blackmore Mobile Electronics
3400 E. Slauson Ave.
Maywood, CA 90270

Page 3

FCC Statement

This equipment has been tested and found to comply with the limits for a Class B digital device, pursuant to Part 15 of the FCC Rules. These limits are designed to provide reasonable protection against harmful interference in a residential installation. This equipment generates uses and can radiate radio frequency energy and, if not installed and used in accordance with the instructions, may cause harmful interference to radio communications. However, there is no guarantee that interference will not occur in a particular installation. If this equipment does cause harmful interference to radio or television reception, which can be determined by turning the equipment off and on, the user is encouraged to try to correct the interference by one or more of the following measures:

- Reorient or relocate the receiving antenna.
- Increase the separation between the equipment and receiver.
- Connect the equipment into an outlet on a circuit different from that to which the receiver is connected.
- Consult the dealer or an experienced radio/TV technician for help.

This device complies with part 15 of the FCC Rules. Operation is subject to the following two conditions:(1) This device may not cause harmful interference, and (2) this device must accept any interference received, including interference that may cause undesired operation.

Changes or modifications not expressly approved by the party responsible for compliance could void the user's authority to operate the equipment.