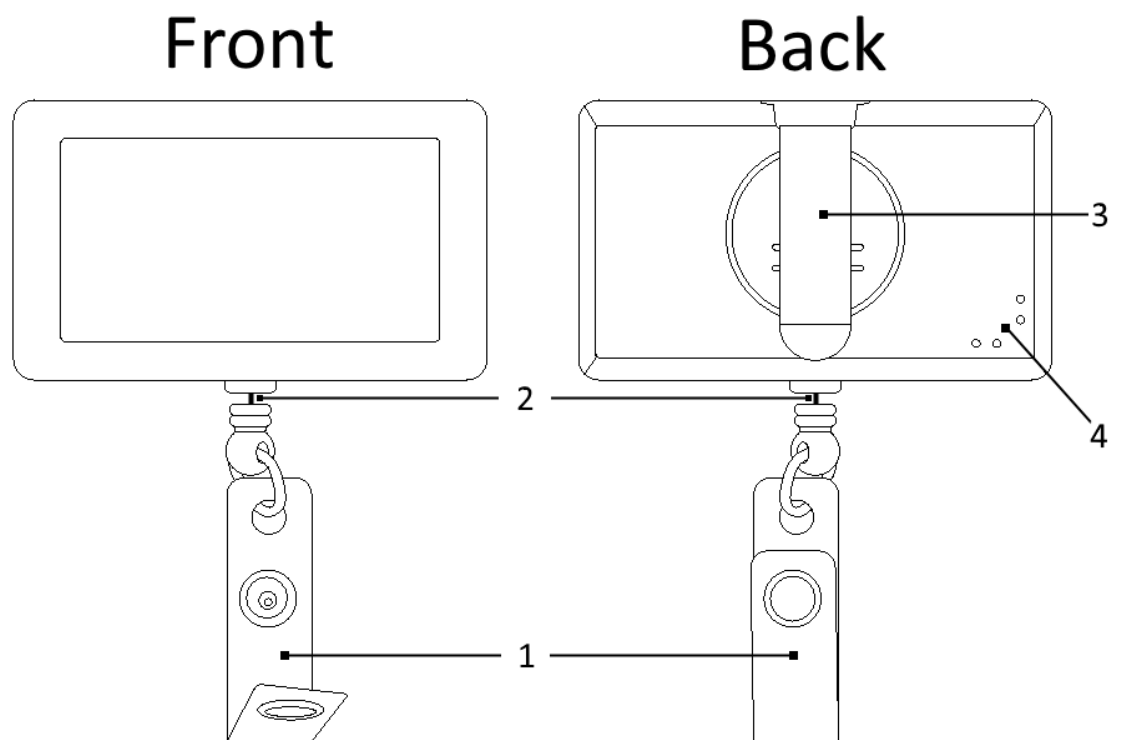


Product Overview



1. ID Holder w/Snap Fastener
2. Retractable Cord (~30")
3. Spring Pocket Clip
4. Programming Access (covered by unique code label)

Getting Started

Before using your badge reel, you will need to assign that badge to your Clean Hands Safe Hands account. To do this, log onto CleanHandsSafeHands.com and follow the badge assignment link where you will be prompted to enter the adjective-noun short code on the back of the reel. If you have problems getting your badge reel assigned, please contact your supervisor or Clean Hands Safe Hands support.

Normal Use

To use your badge reel, all you have to do is move your credentials from your old reel to the new Clean Hands Safe Hands badge reel and start wearing it around the hospital. Whenever you enter or exit a monitored room, or use a monitored dispenser, your activity will be recorded to your user account using the unique signature your badge broadcasts.

The battery in your badge reel is rated to last one year. Although there is no way to directly monitor the battery level and continued functionality of your badge, the system will alert your supervisor if your badge stops functioning and prompt you to replace it.

Cleaning

If your Badge becomes dirty you can clean it with a damp cloth or mild detergent. Be careful not to allow moisture to enter the device as this can damage the internal electronics. Neither the seam between the front and back of the badge, or the opening in the bottom where the cord exits, are rated to protect against liquid or moisture intrusion.

Recycling

Should you need to dispose of your badge, do not throw it in the trash. If you turn your badge in to your supervisor they will return them to Clean Hands Safe Hands for recycling.

Certification

This device complies with part 15 of the FCC Rules. Operation is subject to the following two conditions:

(1) This device may not cause harmful interference, and (2) this device must accept any interference received, including interference that may cause undesired operation.

Warning: Changes or modifications not expressly approved by the party responsible for compliance could void the user's authority to operate this equipment.

Note: This equipment has been tested and found to comply with the limits for a Class B digital device, pursuant to part 15 of the FCC Rules. These limits are designed to provide reasonable protection against harmful interference in a residential installation. This equipment generates, uses and can radiate radio frequency energy and, if not installed and used in accordance with the instructions, may cause harmful interference to radio communications. However, there is no guarantee that interference will not occur in a particular installation. If this equipment does cause harmful interference to radio or television reception, which can be determined by turning the equipment off and on, the user is encouraged to try to correct the interference by one or more of the following measures:

- Reorient or relocate the receiving antenna.
- Increase the separation between the equipment and receiver.
- Connect the equipment into an outlet on a circuit different from that to which the receiver is connected.
- Consult the dealer or an experienced radio/TV technician for help.