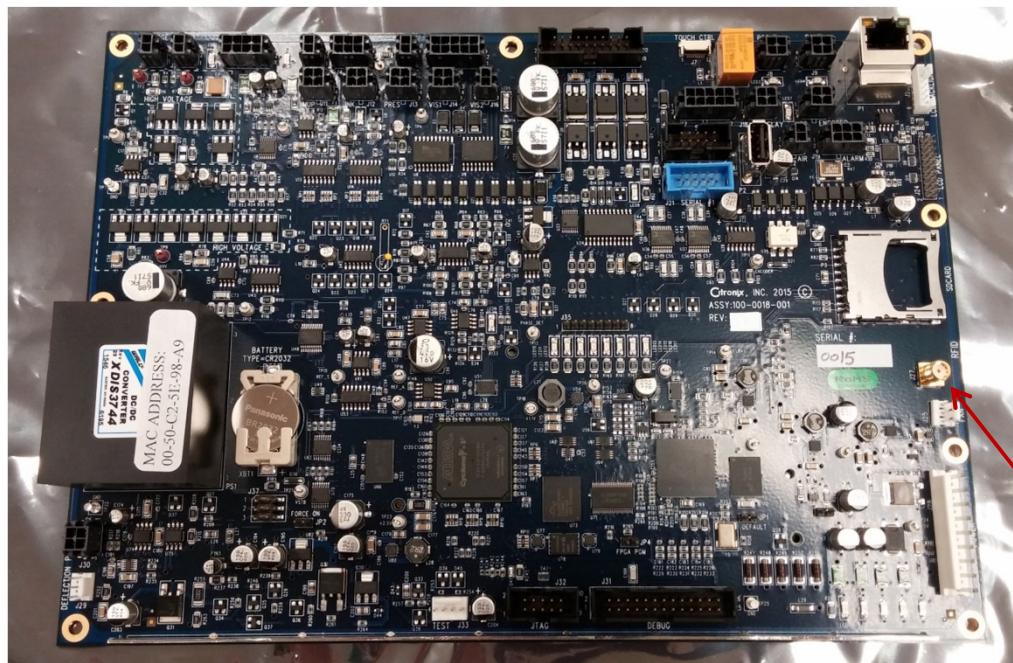
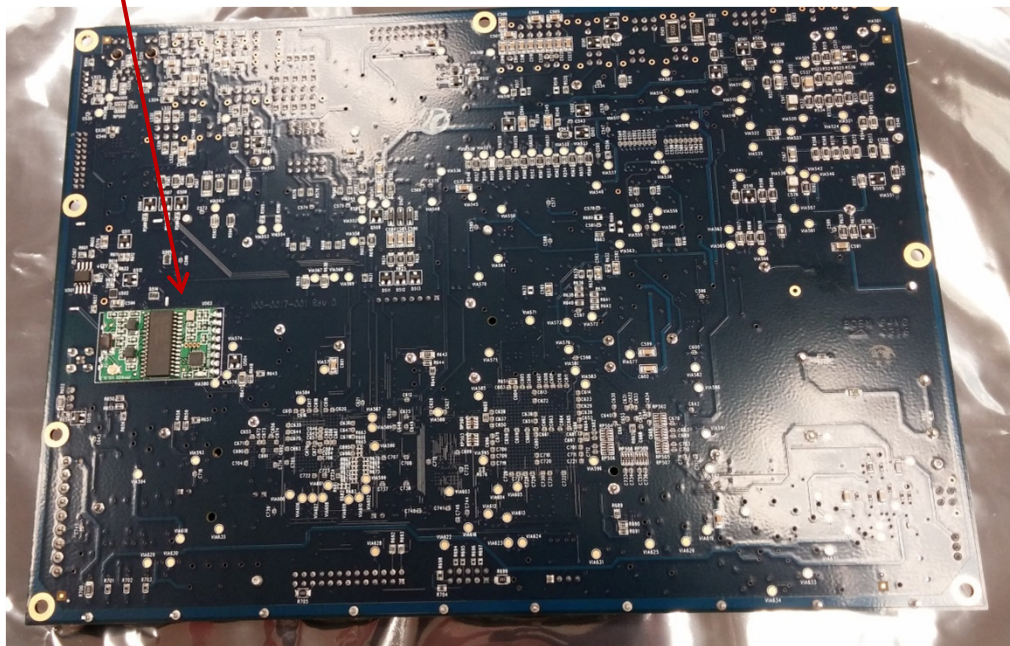


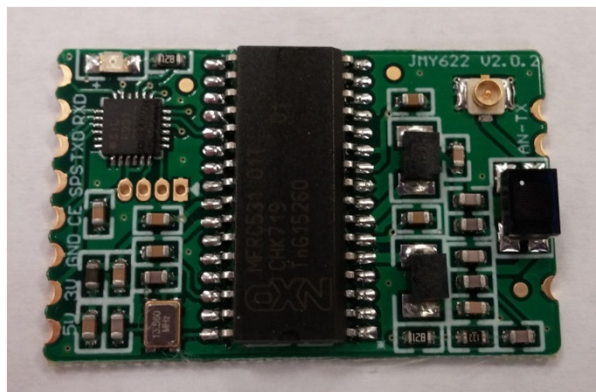
CPU Board



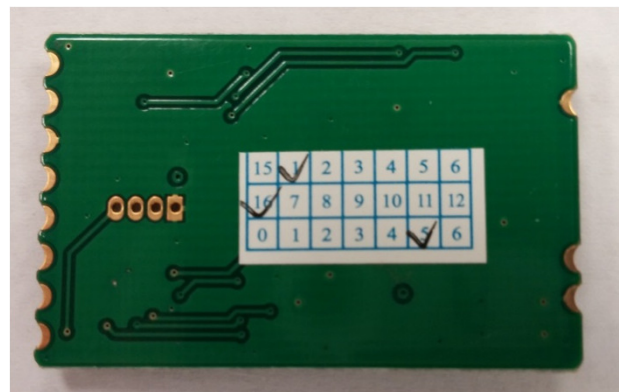
JMY622C



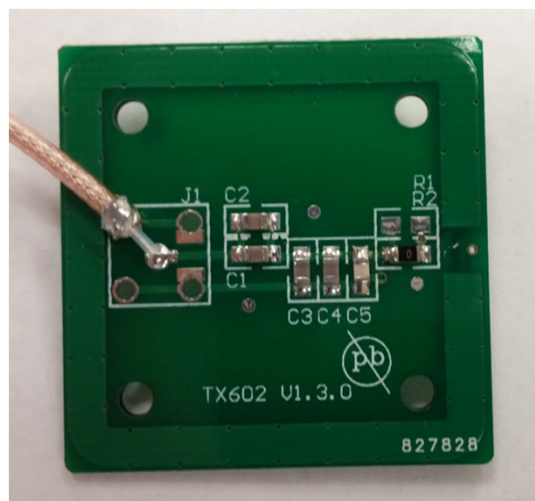
JMY622C Top



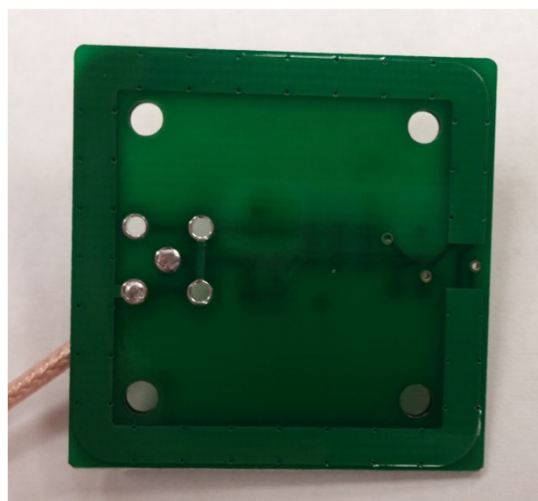
JMY622C Bottom



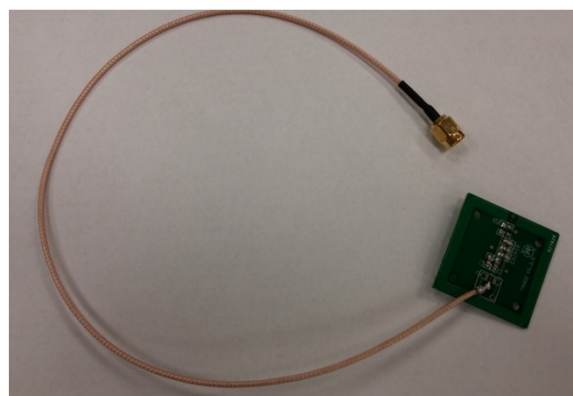
TX602 Antenna Top



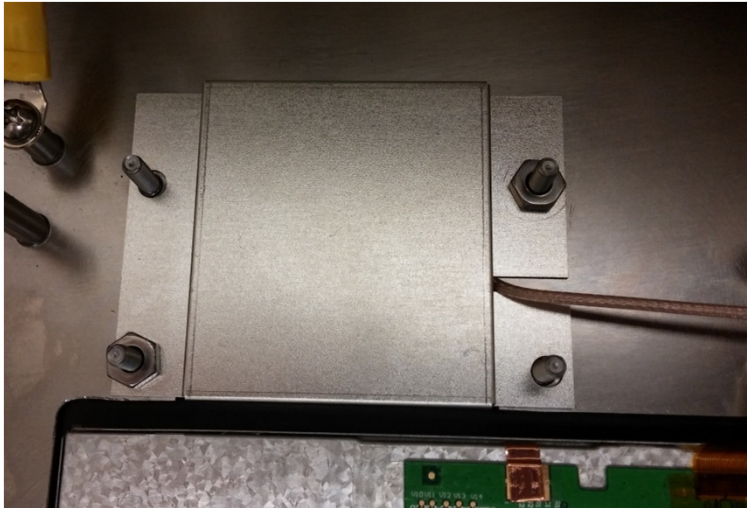
TX602 Antenna Bottom



TX602 Antenna Top with coax



TX602 Antenna installed with shield

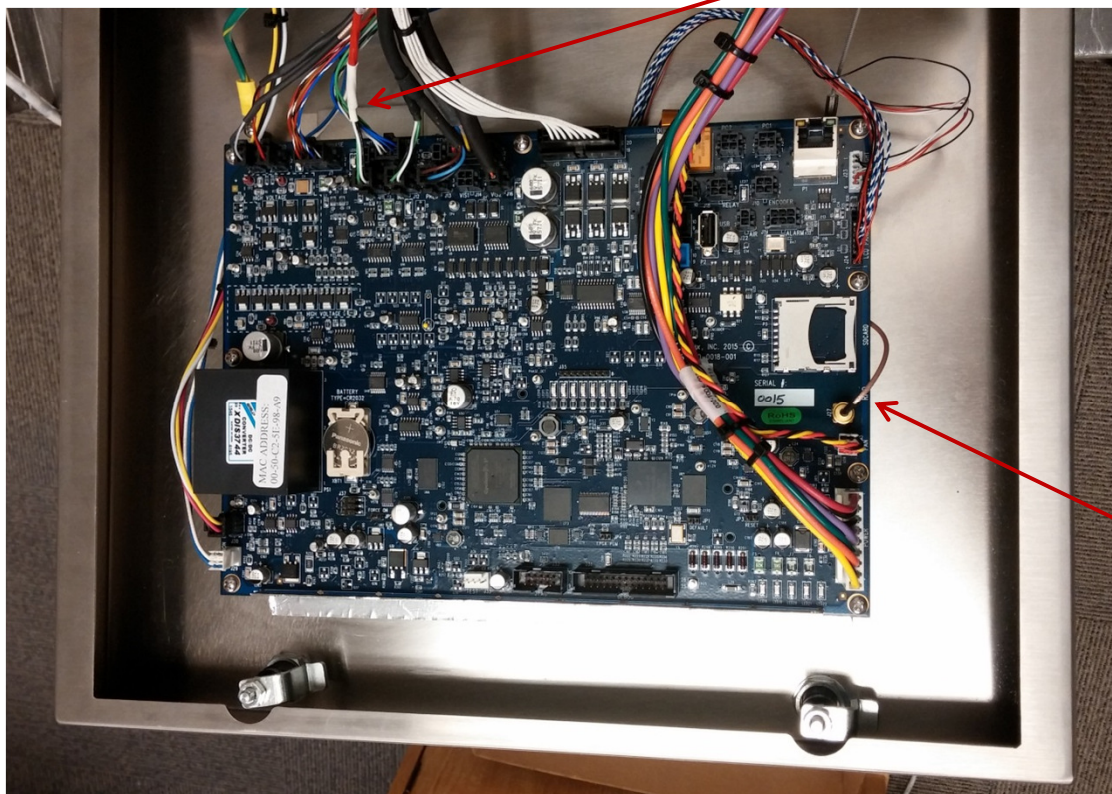


TX602 Antenna installed without shield



CPU Board installed inside front panel

TX602 Antenna installed with shield



Cable to Antenna

Close up view of TX602 Antenna installed with shield

