

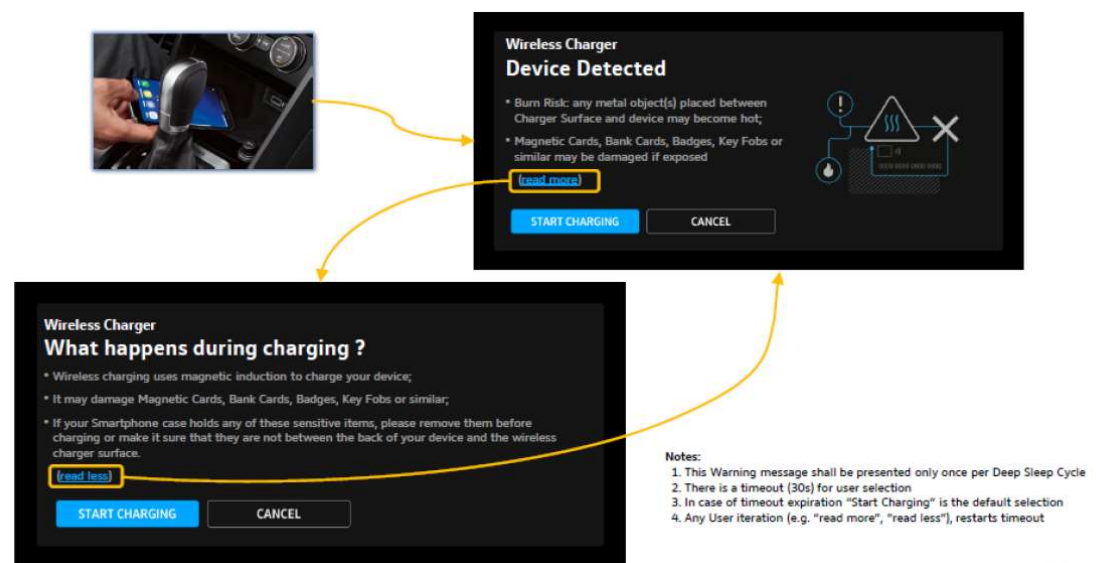
User Guide of Wireless Charger Module (WCM):

The Wireless Charger Module (WCM) will be placed near the Dashboard of the Vehicle as shown the below picture. It interacts with the Radio module via dedicated TELON line. WCM send the status "Charger Available" to the Radio Module once it wakes up. When the user places the mobile phone on top of the WCM. The user must accept the request "Start Charging" on the Radio as shown below.

The Wireless Charger operating frequency is 127 KHz.

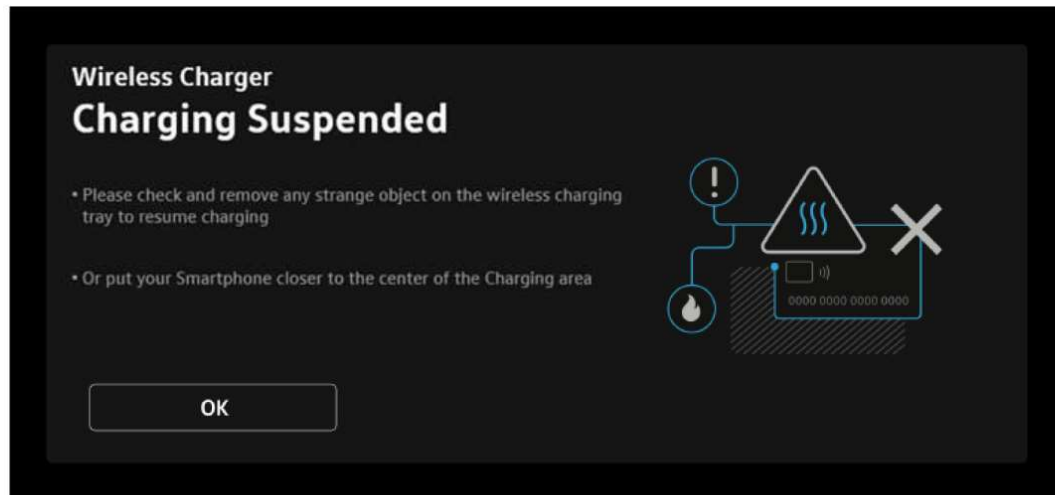
MIB Regio – HMI Warning Screens + User Acceptance

Before charging process, driver must accept it by pressing "START CHARGING" icon otherwise it will not start charging.



MIB Regio – HMI Warning Screens + Charging Suspended

In case FOD state, the driver will get a warning message. The chargeable device must be removed and once any foreign object is removed, chargeable device can be replaced to resume charging.



MIB Regio –Special Use Cases

- When we are in WLC screen (Device detection)
 - CP /AA Device plugged in -> HU shall start the session behind this WLC device detection screen
 - If CP/AA device reconnects -> HU shall start the session at the background (behind the screen)
 - Received a Phone call->No HMI notification/ no HMI impact. User can still use MFL and control the call. Same as RVC case
 - When HU is in Screen off state
 - Device is put in charging doc -> HU shall turn on the display and show notification
-
- When we are in FOD screen
 - CP /AA Device plugged in -> HU shall start the session can start in foreground. No Impact on CP/AA
 - If CP/AA device reconnects -> HU shall start the session based on last user mode. No impact
 - Received a Phone call->acknowledge and show the call status on HMI
 - When HU is in Screen off state
 - Device is put in charging doc -> HU shall not be impacted (Less Impact on Power Management logic)
 - If user start the screen than HU shall present this popup as it was not Charging.

WARNING! This device must be used more than 17cms from the Driver's knee.

FCC Regulatory notices

Modification statement

Harman International Industries, Inc has not approved any changes or modifications to this device by the user. Any changes or modifications could void the user's authority to operate the equipment.

Interference statement (if it is not placed in the device)

This device complies with Part 15 of the FCC Rules. Operation is subject to the following two conditions: (1) this device may not cause interference, and (2) this device must accept any interference, including interference that may cause undesired operation of the device.

Wireless notice

This device complies with FCC radiation exposure limits set forth for an uncontrolled environment and meets the FCC radio frequency (RF) Exposure Guidelines. This transmitter must not be co-located or operating in conjunction with any other antenna or transmitter. The antenna should be installed and operated with minimum distance of 17cm between the radiator and your body.

FCC Class B digital device notice

This equipment has been tested and found to comply with the limits for a Class B digital device, pursuant to part 15 of the FCC Rules. These limits are designed to provide reasonable protection against harmful interference in a residential installation. This equipment generates, uses and can radiate radio frequency energy and, if not installed and used in accordance with the instructions, may cause harmful interference to radio communications. However, there is no guarantee that interference will not occur in a installation. If this equipment does cause harmful interference to radio or television reception, which can be determined by turning the equipment off and on, the user is encouraged to try to correct the interference by one or more of the following measures:

- Reorient or relocate the receiving antenna.
- Increase the separation between the equipment and receiver.
- Connect the equipment into an outlet on a circuit different from that to which the receiver is connected.
- Consult the dealer or an experienced radio/TV technician for help.