

**System Performance Check-750MHz**

Communication System: UID 0, CW (0); Communication System Band: D750 (750.0 MHz); Frequency: 750 MHz;  
 Medium parameters used:  $f = 750$  MHz;  $\sigma = 0.932$  S/m;  $\epsilon_r = 42.719$ ;  $\rho = 1000$  kg/m<sup>3</sup>  
 Phantom section: Flat Section

DASY Configuration:

- Probe: EX3DV4 - SN7383; ConvF(10.64, 10.64, 10.64); Calibrated: 2020/11/30;
- Sensor-Surface: 1.4mm (Mechanical Surface Detection),  $z = 1.0, 31.0$
- Electronics: DAE3 Sn427; Calibrated: 2021/4/9
- Phantom: ELI v5.0; Type: QDOVA002AA; Serial: 1235
- DASY52 52.8.8(1222); SEMCAD X 14.6.10(7331)

**Configuration/Head D750/Area Scan (5x15x1):** Measurement grid:  $dx=15$ mm,  $dy=15$ mm

Maximum value of SAR (measured) = 2.25 W/kg

**Configuration/Head D750/Zoom Scan (7x7x11mm, graded), dist=3mm (7x7x5)/Cube 0:** Measurement grid:

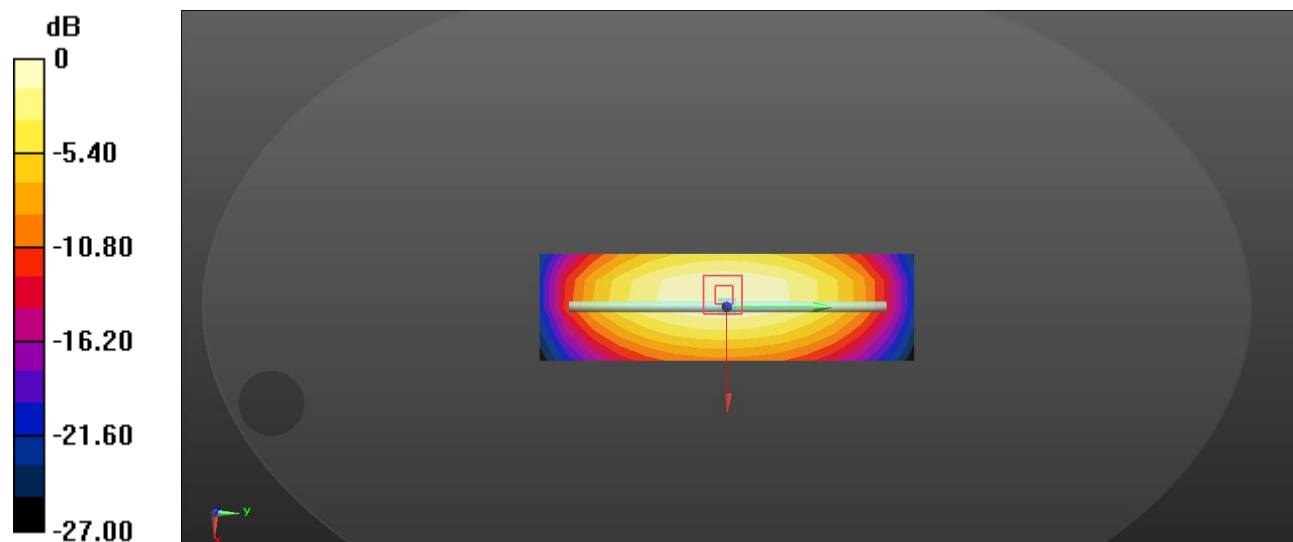
$dx=5$ mm,  $dy=5$ mm,  $dz=5$ mm

Reference Value = 45.56 V/m; Power Drift = 0.12 dB

Peak SAR (extrapolated) = 3.00 W/kg

**SAR(1 g) = 1.99 W/kg; SAR(10 g) = 1.28 W/kg**

Maximum value of SAR (measured) = 2.58 W/kg



0 dB = 2.25 W/kg = 3.52 dBW/kg

**System Performance Check-835MHz**

Communication System: UID 0, CW (0); Communication System Band: D835 (835.0 MHz); Frequency: 835 MHz;  
 Medium parameters used:  $f = 835$  MHz;  $\sigma = 0.943$  S/m;  $\epsilon_r = 42.10$ ;  $\rho = 1000$  kg/m<sup>3</sup>  
 Phantom section: Flat Section

DASY Configuration:

- Probe: EX3DV4 - SN7383; ConvF(10.2, 10.2, 10.2); Calibrated: 2020/11/30;
- Sensor-Surface: 1.4mm (Mechanical Surface Detection),  $z = 1.0, 31.0$
- Electronics: DAE3 Sn427; Calibrated: 2021/4/9
- Phantom: ELI v5.0; Type: QD000P40CD; Serial: TP: 1235
- DASY52 52.8.8(1222); SEMCAD X 14.6.10(7331)

**Configuration/Body/Area Scan (5x13x1):** Measurement grid:  $dx=15$ mm,  $dy=15$ mm

Maximum value of SAR (measured) = 2.75 W/kg

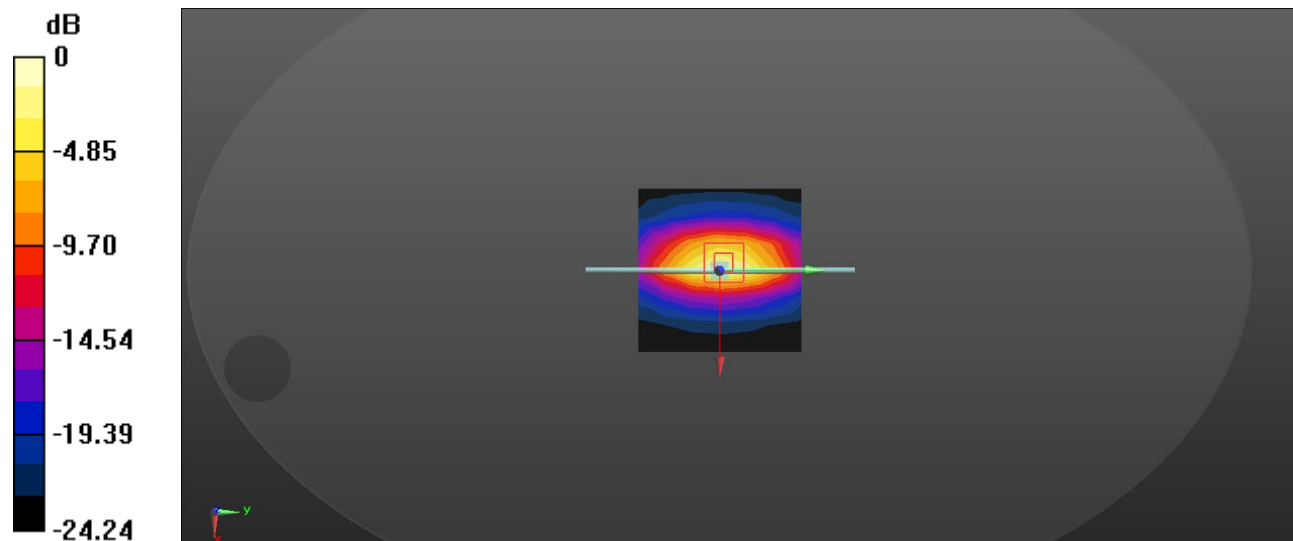
**Configuration/Body/Zoom Scan (5x5x7)/Cube 0:** Measurement grid:  $dx=8$ mm,  $dy=8$ mm,  $dz=5$ mm

Reference Value = 50.50 V/m; Power Drift = -0.01 dB

Peak SAR (extrapolated) = 3.39 W/kg

**SAR(1 g) = 2.41 W/kg; SAR(10 g) = 1.57 W/kg**

Maximum value of SAR (measured) = 2.80 W/kg



0 dB = 2.75 W/kg = 4.39 dBW/kg

## System Performance Check-1800MHz

Communication System: UID 0, CW (0); Communication System Band: D1800 (1800.0 MHz); Frequency: 1800 MHz;  
 Medium parameters used:  $f = 1800$  MHz;  $\sigma = 1.420$  S/m;  $\epsilon_r = 41.220$ ;  $\rho = 1000$  kg/m<sup>3</sup>  
 Phantom section: Flat Section

DASY Configuration:

- Probe: EX3DV4 - SN7383; ConvF(8.65, 8.65, 8.65); Calibrated: 2020/11/30;
- Sensor-Surface: 1.4mm (Mechanical Surface Detection),  $z = 1.0$
- Electronics: DAE3 Sn427; Calibrated: 2021/4/9
- Phantom: ELI v5.0; Type: QD000P40CD; Serial: TP:1235
- DASY52 52.10.0(1442); SEMCAD X 14.6.10(7331)

**Configuration/Body/Area Scan (7x11x1):** Measurement grid:  $dx=15$ mm,  $dy=15$ mm

Maximum value of SAR (measured) = 11.8 W/kg

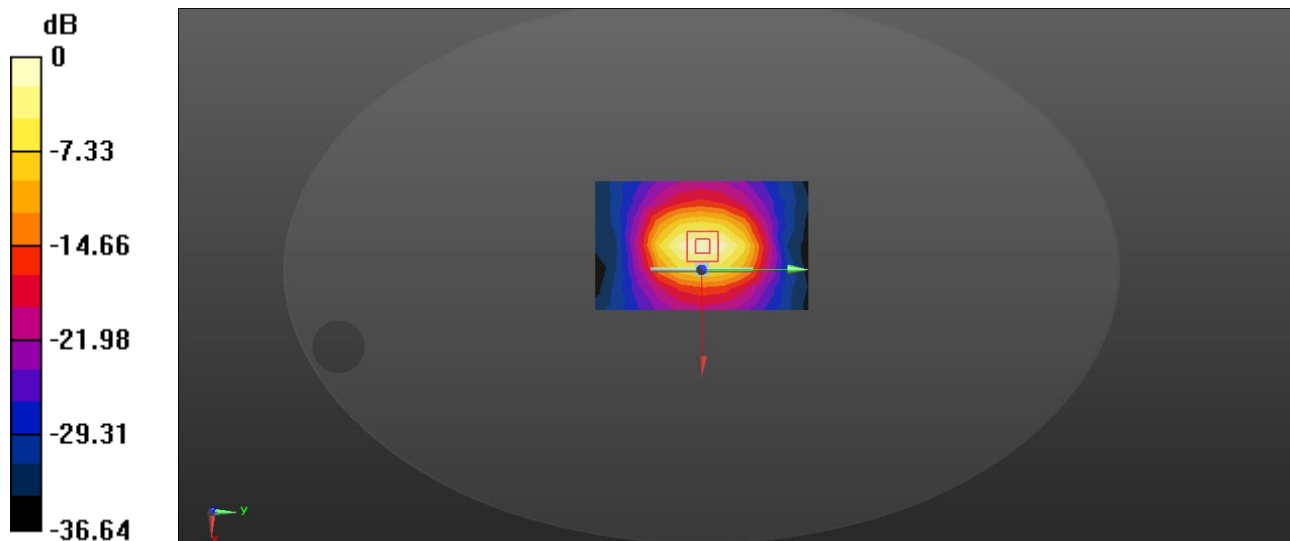
**Configuration/Body/Zoom Scan (5x5x7)/Cube 0:** Measurement grid:  $dx=8$ mm,  $dy=8$ mm,  $dz=5$ mm

Reference Value = 87.75 V/m; Power Drift = -0.08 dB

Peak SAR (extrapolated) = 16.2 W/kg

**SAR(1 g) = 9.28 W/kg; SAR(10 g) = 5.02 W/kg**

Maximum value of SAR (measured) = 11.5 W/kg



0 dB = 11.8 W/kg = 10.72 dBW/kg

### System Performance Check-1900MHz

Communication System: UID 0, CW (0); Communication System Band: D1900 (1900.0 MHz); Frequency: 1900 MHz;  
Medium parameters used:  $f = 1900$  MHz;  $\sigma = 1.439$  S/m;  $\epsilon_r = 41.040$ ;  $\rho = 1000$  kg/m<sup>3</sup>

Phantom section: Flat Section

DASY Configuration:

- Probe: EX3DV4 - SN7383; ConvF(8.36, 8.36, 8.36); Calibrated: 2020/11/30;
- Sensor-Surface: 1.4mm (Mechanical Surface Detection),  $z = 1.0$
- Electronics: DAE3 Sn427; Calibrated: 2021/4/9
- Phantom: ELI v5.0; Type: QD000P40CD; Serial: TP:1235
- DASY52 52.10.0(1442); SEMCAD X 14.6.10(7331)

**Configuration/Body/Area Scan (7x11x1):** Measurement grid:  $dx=15$ mm,  $dy=15$ mm

Maximum value of SAR (measured) = 11.4 W/kg

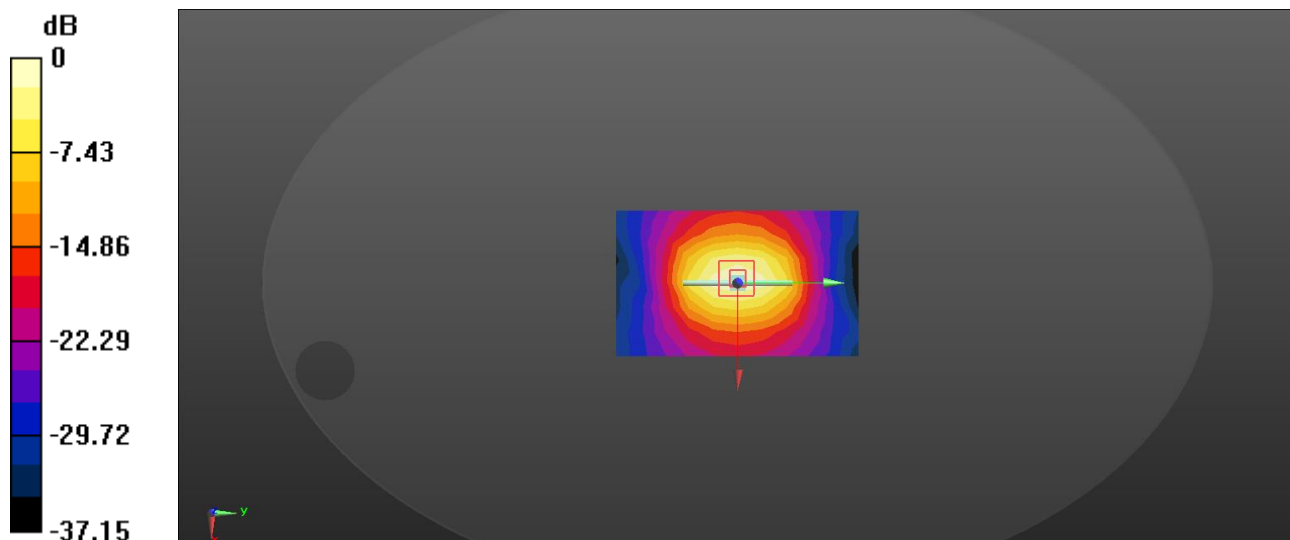
**Configuration/Body/Zoom Scan (5x5x7)/Cube 0:** Measurement grid:  $dx=8$ mm,  $dy=8$ mm,  $dz=5$ mm

Reference Value = 87.00 V/m; Power Drift = 0.02 dB

Peak SAR (extrapolated) = 16.0 W/kg

**SAR(1 g) = 10.03 W/kg; SAR(10 g) = 5.29 W/kg**

Maximum value of SAR (measured) = 11.3 W/kg



0 dB = 11.4 W/kg = 10.57 dBW/kg

**System Performance Check-2450MHz-Head**

Communication System: UID 0, CW (0); Communication System Band: D2450 (2450.0 MHz); Frequency: 2450 MHz;  
 Medium parameters used:  $f = 2450$  MHz;  $\sigma = 1.873$  S/m;  $\epsilon_r = 40.200$ ;  $\rho = 1000$  kg/m<sup>3</sup>  
 Phantom section: Flat Section

DASY Configuration:

- Probe: EX3DV4 - SN7383; ConvF(7.75, 7.75, 7.75); Calibrated: 2020/11/30;
- Sensor-Surface: 3mm (Mechanical Surface Detection),  $z = 1.0, 31.0$
- Electronics: DAE3 Sn427; Calibrated: 2021/4/9
- Phantom: ELI v5.0; Type: QDOVA002AA; Serial: TP:1235
- DASY52 52.8.8(1222); SEMCAD X 14.6.10(7331)

**Configuration/D2450V2/Area Scan (9x9x1):** Measurement grid:  $dx=12$ mm,  $dy=12$ mm

Maximum value of SAR (measured) = 15.9 W/kg

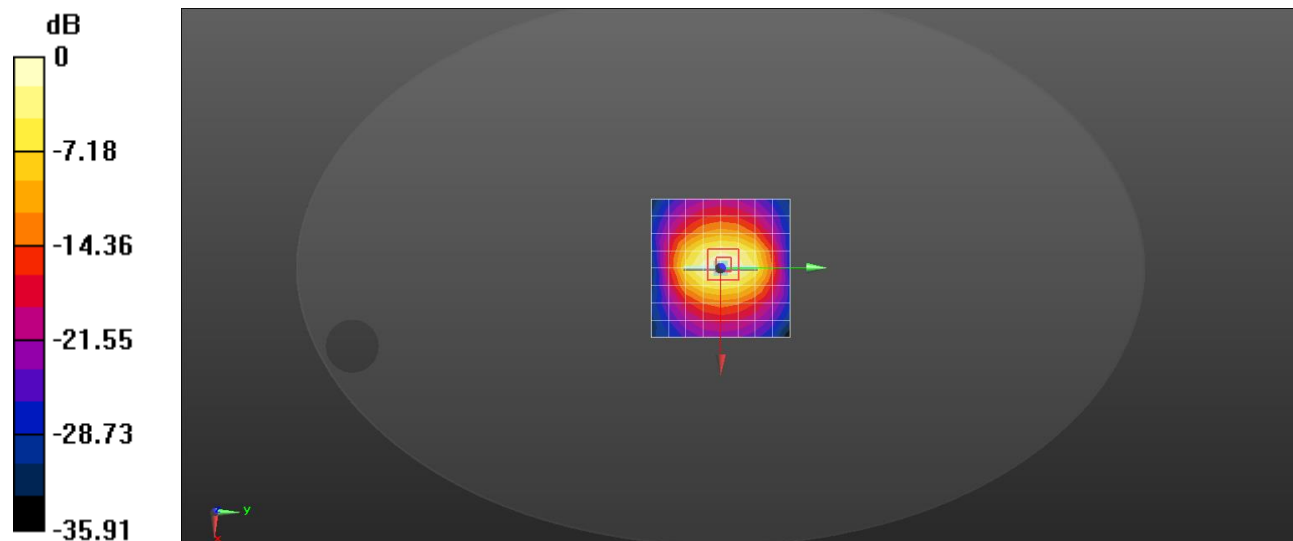
**Configuration/D2450V2/Zoom Scan (7x7x7)/Cube 0:** Measurement grid:  $dx=5$ mm,  $dy=5$ mm,  $dz=5$ mm

Reference Value = 86.55 V/m; Power Drift = 0.04 dB

Peak SAR (extrapolated) = 25.9 W/kg

**SAR(1 g) = 12.79 W/kg; SAR(10 g) = 6.02 W/kg**

Maximum value of SAR (measured) = 16.4 W/kg



0 dB = 15.9 W/kg = 12.01 dBW/kg