



MEASUREMENT REPORT FOR TAS700 BRAZIL C-CAR

SHANGHAI INTERNATIONAL

Shanghai Telematics Team

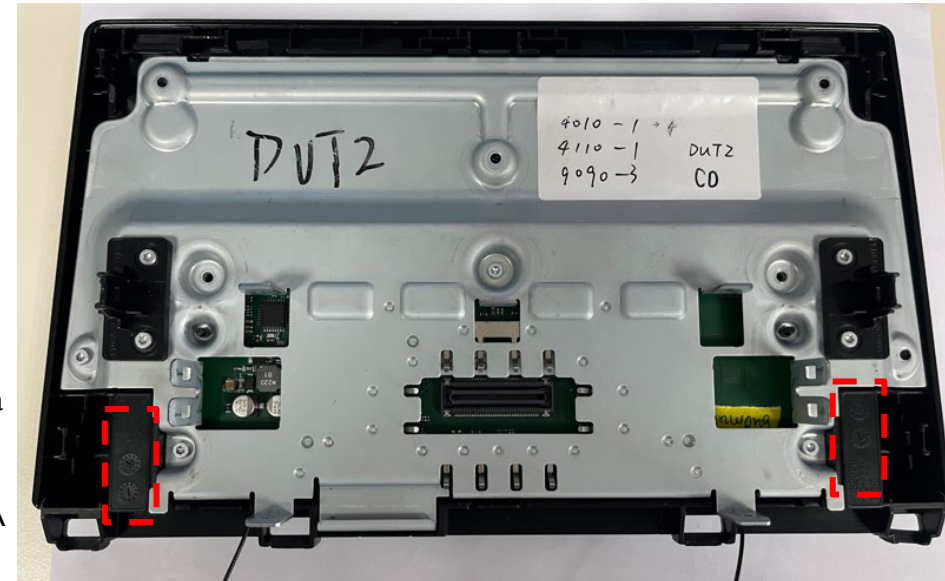
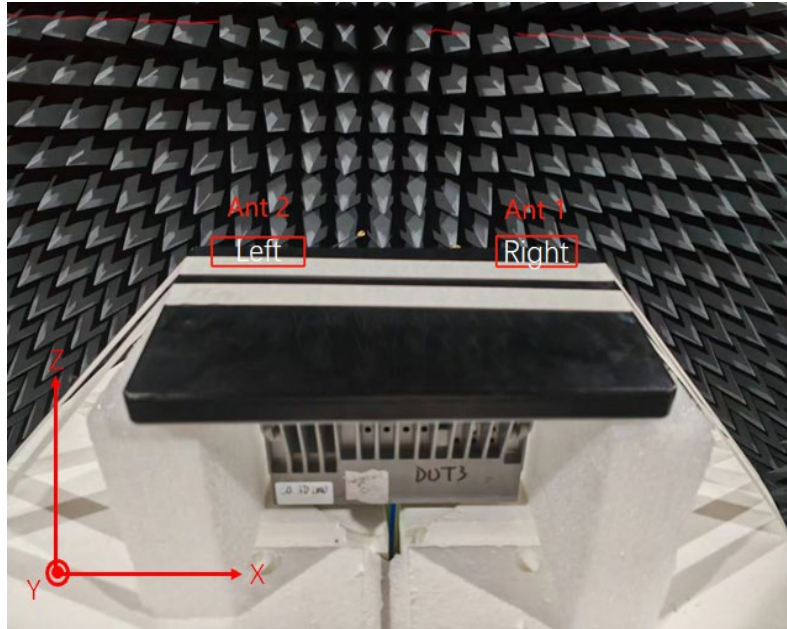
2024.0417

#1

TAS700 BRAZIL—C-CAR



Set up in the chamber and CS



The test result does not include the loss of the transmit line on board

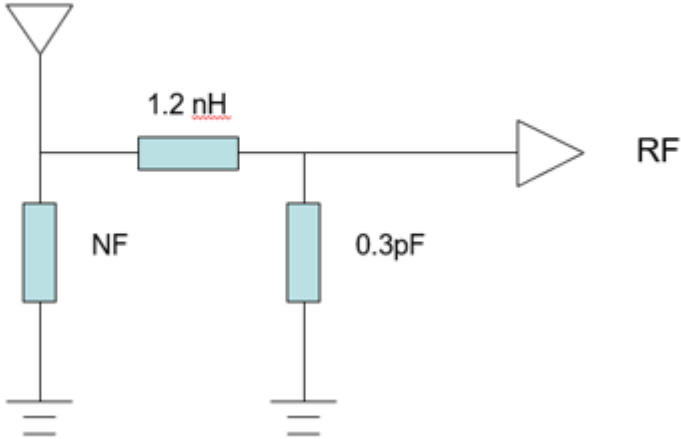
BT/WIFI antenna
2.4~2.5GHz;
5.15~5.85GHz
Antenna type: IFA

WIFI antenna
2.4~2.5GHz
Antenna type: IFA

Test result for WIFI antenna 2.4~2.5GHz

Frequency (MHz)	Efficiency(%)	Efficiency(dB)	Gain(dB)
2400	49%	-3.09	3.67
2420	51%	-2.89	3.38
2440	53%	-2.79	4.02
2460	51%	-2.89	4.53
2480	50%	-2.98	3.4
2500	49%	-3.1	2.99

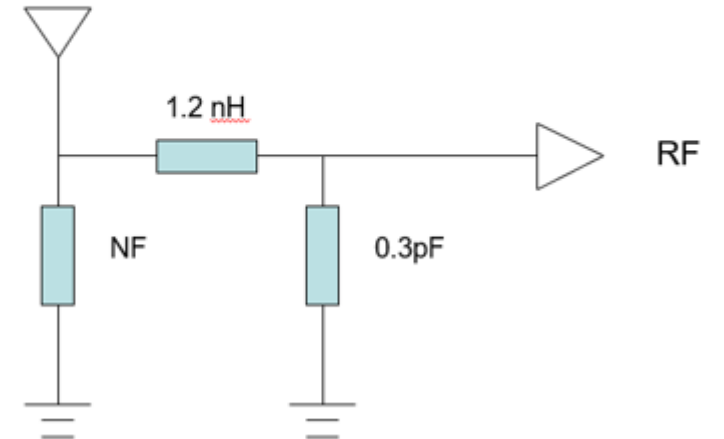
WIFI antenna 2.4~2.5GHz



Test result for BT/ WIFI antenna 2.4~2.5GHz;5.15~5.85GHz

Frequency (MHz)	Efficiency(%)	Efficiency(dB)	Gain(dB)	Frequency (MHz)	Efficiency(%)	Efficiency(dB)	Gain(dB)
2400	41%	-3.85	4.17	5150	57%	-2.44	4.28
2420	41%	-3.85	4.16	5200	58%	-2.39	4.66
2440	42%	-3.75	4.13	5250	60%	-2.25	4.91
2460	41%	-3.85	3.69	5300	55%	-2.56	5.59
2480	41%	-3.87	3.4	5350	58%	-2.37	5.29
2500	42%	-3.78	3.34	5400	56%	-2.5	5.08
				5450	56%	-2.55	5.66
				5500	55%	-2.63	5.42
				5550	53%	-2.74	5.32
				5600	56%	-2.52	4.86
				5650	54%	-2.65	4.66
				5700	55%	-2.61	4.6
				5750	56%	-2.52	4.97
				5800	56%	-2.54	5.74
				5850	55%	-2.57	5.67

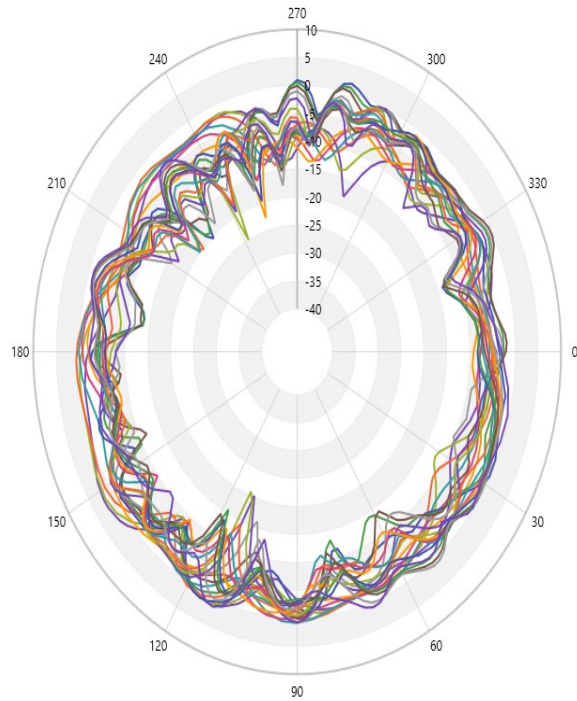
BT/ WIFI antenna
2.4~2.5GHz;5.15~5.85GHz



2D Radiation pattern for WIFI antenna 2.4~2.5GHz

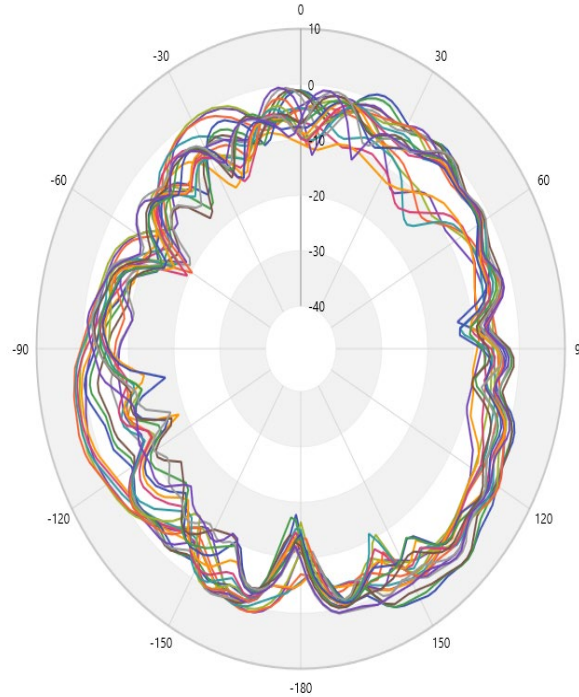


- 90° 2400.00 MHz ETotal
- 90° 2420.00 MHz ETotal
- 90° 2440.00 MHz ETotal
- 90° 2460.00 MHz ETotal
- 90° 2480.00 MHz ETotal
- 90° 2500.00 MHz ETotal
- 90° 5150.00 MHz ETotal
- 90° 5200.00 MHz ETotal
- 90° 5250.00 MHz ETotal
- 90° 5300.00 MHz ETotal
- 90° 5350.00 MHz ETotal
- 90° 5400.00 MHz ETotal
- 90° 5450.00 MHz ETotal
- 90° 5500.00 MHz ETotal
- 90° 5550.00 MHz ETotal
- 90° 5600.00 MHz ETotal
- 90° 5650.00 MHz ETotal
- 90° 5700.00 MHz ETotal
- 90° 5750.00 MHz ETotal
- 90° 5800.00 MHz ETotal
- 90° 5850.00 MHz ETotal



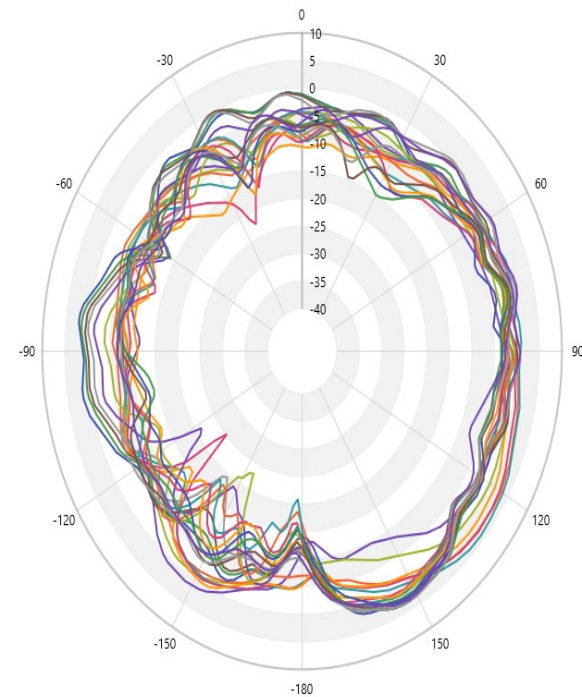
Theta 90

- 0° 2400.00 MHz ETotal
- 0° 2420.00 MHz ETotal
- 0° 2440.00 MHz ETotal
- 0° 2460.00 MHz ETotal
- 0° 2480.00 MHz ETotal
- 0° 2500.00 MHz ETotal
- 0° 5150.00 MHz ETotal
- 0° 5200.00 MHz ETotal
- 0° 5250.00 MHz ETotal
- 0° 5300.00 MHz ETotal
- 0° 5350.00 MHz ETotal
- 0° 5450.00 MHz ETotal
- 0° 5400.00 MHz ETotal
- 0° 5500.00 MHz ETotal
- 0° 5550.00 MHz ETotal
- 0° 5600.00 MHz ETotal
- 0° 5650.00 MHz ETotal
- 0° 5700.00 MHz ETotal
- 0° 5750.00 MHz ETotal
- 0° 5800.00 MHz ETotal
- 0° 5850.00 MHz ETotal



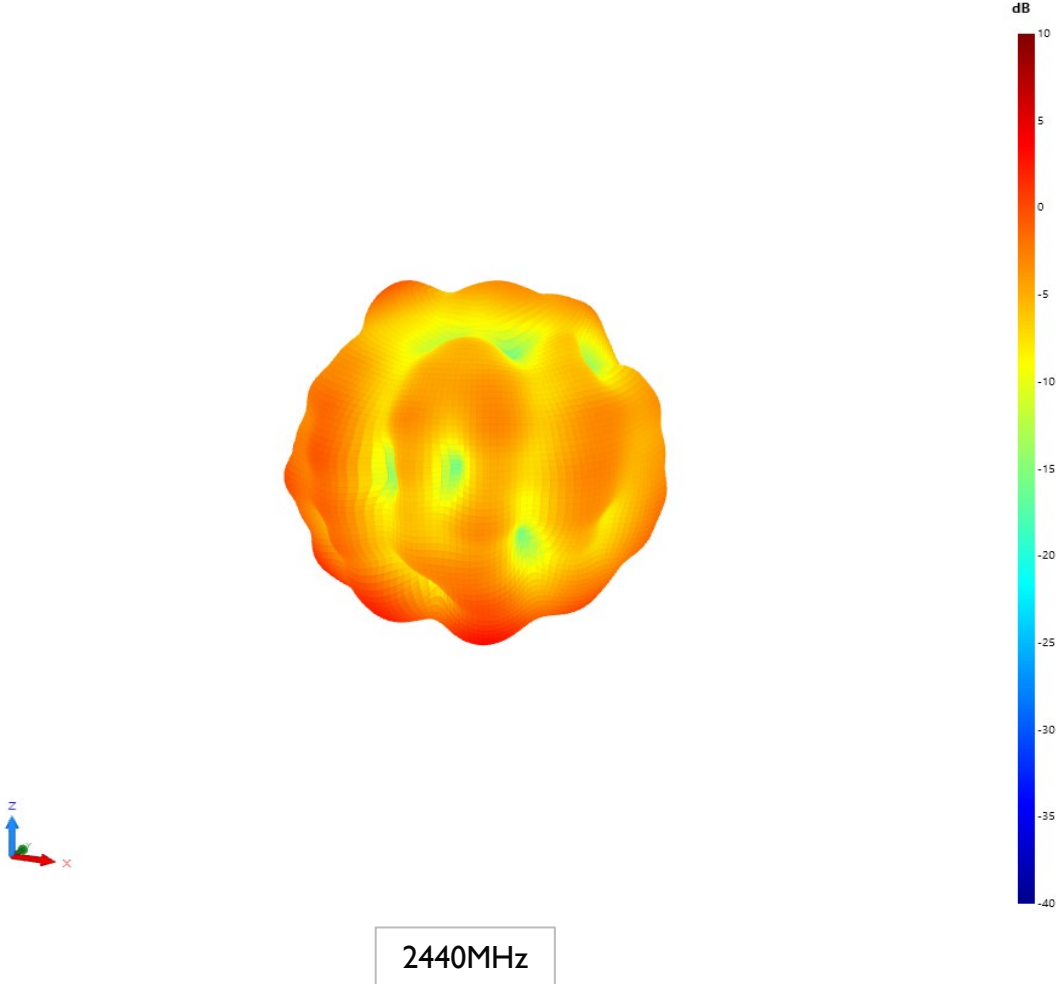
Phi 0

- 90° 2400.00 MHz ETotal
- 90° 2420.00 MHz ETotal
- 90° 2440.00 MHz ETotal
- 90° 2460.00 MHz ETotal
- 90° 2480.00 MHz ETotal
- 90° 2500.00 MHz ETotal
- 90° 5150.00 MHz ETotal
- 90° 5200.00 MHz ETotal
- 90° 5250.00 MHz ETotal
- 90° 5300.00 MHz ETotal
- 90° 5350.00 MHz ETotal
- 90° 5400.00 MHz ETotal
- 90° 5450.00 MHz ETotal
- 90° 5500.00 MHz ETotal
- 90° 5550.00 MHz ETotal
- 90° 5600.00 MHz ETotal
- 90° 5650.00 MHz ETotal
- 90° 5700.00 MHz ETotal
- 90° 5750.00 MHz ETotal
- 90° 5800.00 MHz ETotal
- 90° 5850.00 MHz ETotal

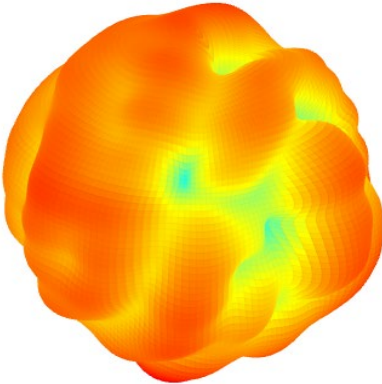


Phi 90

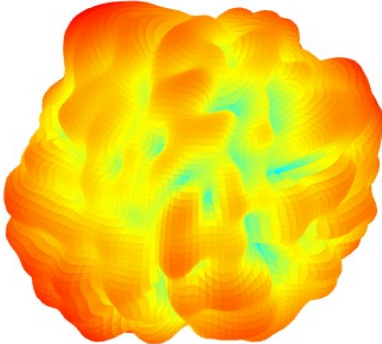
3D Radiation pattern for WIFI antenna 2.4~2.5GHz



3D Radiation pattern for BT/ WIFI antenna 2.4~2.5GHz; 5.15~5.85GHz



2440MHz



5500MHz

