

TEST REPORT

Applicant Name : Bytech NY Inc.
 Address : 2585 West 13th Street Brooklyn NY 11223 USA
 Report Number : SZ3220602-24347E-RF
 FCC ID: 2AHN6-OPCP116

Test Standard (s)

FCC Part 15C

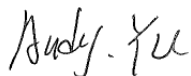
Sample Description

Product Type: 10Watt Wireless Charger-BK
 Model No.: BY-OP-CP-116-BK
 Trade Mark: N/A
 Date Received: 2022-06-02
 Date of Test: 2022-06-14 to 2022-06-19
 Report Date: 2022-12-13

Test Result:	Pass*
--------------	-------

* In the configuration tested, the EUT complied with the standards above.

Prepared and Checked By:



Audy.Yu
EMC Engineer

Approved By:



Candy Li
EMC Engineer

Note: This report may contain data that are not covered by the A2LA accreditation and are marked with an asterisk "★".

Shenzhen Accurate Technology Co., Ltd. is not responsible for the authenticity of any test data provided by the applicant. Data included from the applicant that may affect test results are marked with an asterisk "★". Customer model name, addresses, names, trademarks etc. are not considered data.

This report cannot be reproduced except in full, without prior written approval of the Company. Unless otherwise stated the results shown in this test report refer only to the sample(s) tested. This report is valid only with a valid digital signature. The digital signature may be available only under the Adobe software above version 7.0.

Shenzhen Accurate Technology Co., Ltd.

1/F., Building A, Changyuan New Material Port, Science & Industry Park, Nanshan District, Shenzhen, Guangdong, P.R. China
 Tel: +86 755-26503290 Fax: +86 755-26503396 Web: www.atc-lab.com

TABLE OF CONTENTS

DOCUMENT REVISION HISTORY	3
GENERAL INFORMATION.....	4
PRODUCT DESCRIPTION FOR EQUIPMENT UNDER TEST (EUT)	4
OBJECTIVE	4
TEST METHODOLOGY	4
MEASUREMENT UNCERTAINTY	4
TEST FACILITY	5
SYSTEM TEST CONFIGURATION.....	6
JUSTIFICATION	6
EUT EXERCISE SOFTWARE	6
LOCAL SUPPORT EQUIPMENT.....	6
EXTERNAL I/O CABLE.....	6
BLOCK DIAGRAM OF TEST SETUP	7
SUMMARY OF TEST RESULTS	8
TEST EQUIPMENT LIST	9
FCC§15.203 – ANTENNA REQUIREMENT.....	10
APPLICABLE STANDARD	10
ANTENNA CONNECTED CONSTRUCTION	10
FCC §15.207 (A) – AC LINE CONDUCTED EMISSIONS	11
APPLICABLE STANDARD	11
EUT SETUP.....	11
EMI TEST RECEIVER SETUP.....	11
TEST PROCEDURE	12
FACTOR & MARGIN CALCULATION	12
TEST DATA	12
FCC §15.205 & §15.209 - RADIATED EMISSIONS TEST	15
APPLICABLE STANDARD	15
EUT SETUP.....	15
EMI TEST RECEIVER SETUP.....	16
CORRECTED AMPLITUDE & MARGIN CALCULATION	16
TEST DATA	16
FCC§15.215(C) - 20DB EMISSION BANDWIDTH	25
APPLICABLE STANDARD	25
TEST PROCEDURE	25
TEST DATA	25

DOCUMENT REVISION HISTORY

Revision Number	Report Number	Description of Revision	Date of Revision
0	SZ3220602-24347E-RF	Original Report	2022-12-13

GENERAL INFORMATION

Product Description for Equipment under Test (EUT)

Product Type	10Watt Wireless Charger-BK
Test Model	BY-OP-CP-116-BK
UPC Number	805112093366
SKU Number	6620000
Lot Number	BY071122
Frequency Range	133kHz
Antenna Type	Coil
Input Voltage	DC 5V 2A/9V 2A from USB port
Output Power	10W/7.5W/5W
Sample serial number	SZ3220602-24347E-RF-S1 (Assigned by ATC, Shenzhen)
Sample/EUT Status	Good condition

Objective

This test report is in accordance with Part 2, Subpart J, and Part 15, Subparts A and C of the Federal Communications Commission's rules.

The objective is to determine the compliance of EUT with FCC rules, section 15.203, 15.205, 15.207, 15.209 and 15.215.

Test Methodology

All measurements contained in this report were conducted with ANSI C63.10-2013, American National Standard of Procedures for Compliance Testing of Unlicensed Wireless Devices.

All emissions measurement was performed at Shenzhen Accurate Technology Co., Ltd. The radiated testing was performed at an antenna-to-EUT distance of 3 meters.

Measurement Uncertainty

Parameter		Uncertainty
Occupied Channel Bandwidth		5%
Unwanted Emission, conducted		1.6dB
AC Power Lines Conducted Emissions		2.72dB
Emissions, Radiated	9kHz – 30MHz	2.66dB
	30MHz - 1GHz	4.28dB
Temperature		1°C
Humidity		6%
Supply voltages		0.4%

Note: The extended uncertainty given in this report is obtained by combining the standard uncertainty times the coverage factor K with the 95% confidence interval. Otherwise required by the applicant or Product Regulations, Decision Rule in this report did not consider the uncertainty.

Test Facility

The test site used by Shenzhen Accurate Technology Co., Ltd. to collect test data is located on the 1/F., Building A, Changyuan New Material Port, Science & Industry Park, Nanshan District, Shenzhen, Guangdong, P.R. China.

The test site has been approved by the FCC under the KDB 974614 D01 and is listed in the FCC Public Access Link (PAL) database, FCC Registration No.: 708358, the FCC Designation No.: CN1189.

Accredited by American Association for Laboratory Accreditation (A2LA). The Certificate Number is 4297.01

The lab has been recognized by Innovation, Science and Economic Development Canada to test to Canadian radio equipment requirements, the CAB identifier: CN0016. The Registration Number is 5077A.

SYSTEM TEST CONFIGURATION

Justification

The system was configured for testing in a test mode.

Note: The device tested under full load.

EUT Exercise Software

No software used in test.

Local Support Equipment

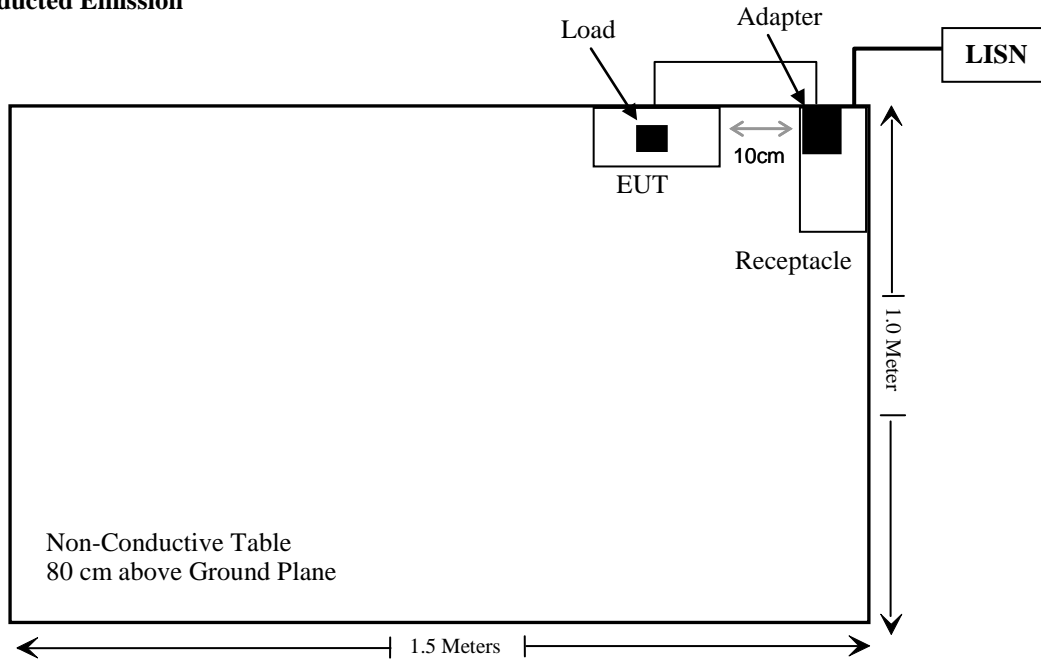
Manufacturer	Description	Model	Serial Number
DLIGHT STAR	Load	DZ0111	Unknown
XIAOMI	adapter	MDY-11-EB	CA62010U101960G

External I/O Cable

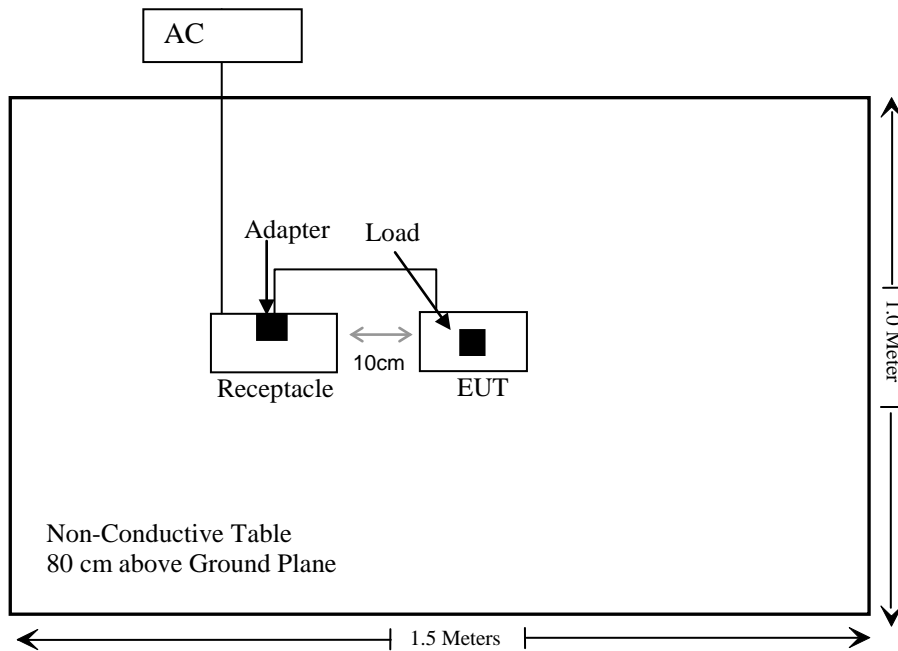
Cable Description	Length (m)	From Port	To
Unshielded Un-Detachable AC Cable	1.2	LISN	Receptacle
Unshielded Detachable USB Cable	0.5	Adapter	EUT

Block Diagram of Test Setup

For Conducted Emission



For Radiated Emission



SUMMARY OF TEST RESULTS

FCC Rules	Description of Test	Result
FCC§15.203	Antenna Requirement	Compliant
FCC§15.207	AC Line Conducted Emission	Compliant
§15.209 §15.205	Radiated Emission Test	Compliant
§15.215	20dB Emission Bandwidth	Compliant

TEST EQUIPMENT LIST

Manufacturer	Description	Model	Serial Number	Calibration Date	Calibration Due Date
Conducted Emission test					
Rohde& Schwarz	EMI Test Receiver	ESCI	100784	2021/12/13	2022/12/12
Rohde & Schwarz	L.I.S.N.	ENV216	101314	2021/12/13	2022/12/12
Anritsu Corp	50 Coaxial Switch	MP59B	6100237248	2021/12/13	2022/12/12
Unknown	RF Coaxial Cable	No.17	N0350	2021/12/14	2022/12/13
Conducted Emission Test Software: e3 19821b (V9)					
RF Radiated test					
Rohde & Schwarz	Test Receiver	ESR	102725	2021/12/13	2022/12/12
SONOMA INSTRUMENT	Amplifier	310 N	186131	2021/11/09	2022/11/08
Rohde&Schwarz	Spectrum Analyzer	FSV40	101949	2021/12/13	2022/12/12
SCHWARZBECK	LOOP ANTENNA	FMZB1516	1516131	2021/12/22	2024/12/21
Schwarzbeck	Bilog Antenna	VULB9163	9163-323	2021/07/06	2024/07/05
Unknown	RF Coaxial Cable	No.12	N040	2021/12/14	2022/12/13
Unknown	RF Coaxial Cable	No.13	N300	2021/12/14	2022/12/13
Unknown	RF Coaxial Cable	No.14	N800	2021/12/14	2022/12/13
Radiated Emission Test Software: e3 19821b (V9)					

* **Statement of Traceability:** Shenzhen Accurate Technology Co., Ltd. attests that all calibrations have been performed in accordance to requirements that traceable to National Primary Standards and International System of Units (SI).

FCC§15.203 – ANTENNA REQUIREMENT

Applicable Standard

An intentional radiator shall be designed to ensure that no antenna other than that furnished by the responsible party shall be used with the device. The use of a permanently attached antenna or of an antenna that uses a unique coupling to the intentional radiator shall be considered sufficient to comply with the provisions of this section.

Antenna Connected Construction

The EUT has one coil antenna arrangement which was permanently attached, fulfill the requirement of this section. Please refer to the EUT photos.

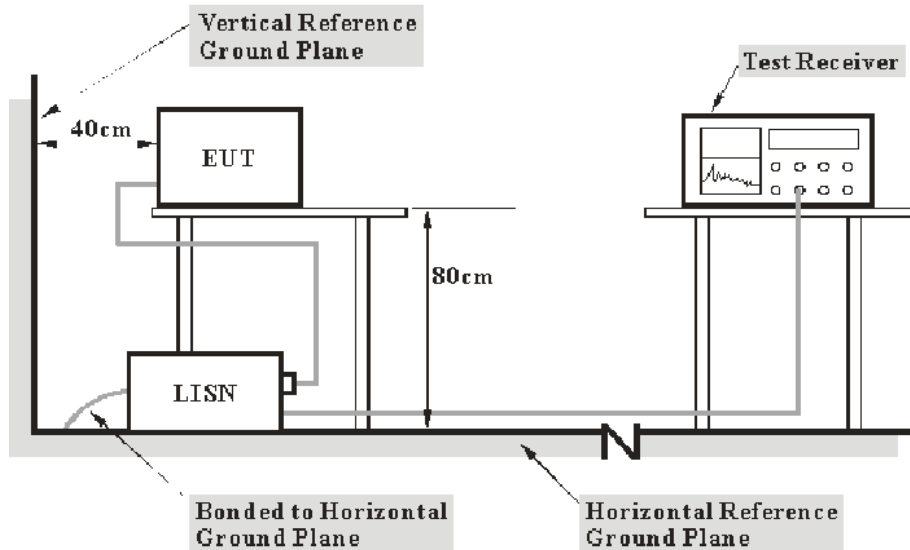
Result: Compliant.

FCC §15.207 (a) – AC LINE CONDUCTED EMISSIONS

Applicable Standard

FCC §15.207(a)

EUT Setup



- Note: 1. Support units were connected to second LISN.
 2. Both of LISNs (AMN) 80 cm from EUT and at the least 80 cm from other units and other metal planes support units.

The measurement procedure of EUT setup is according with ANSI C63.10-2013. The related limit was specified in FCC Part 15.207.

The spacing between the peripherals was 10 cm.

EMI Test Receiver Setup

The EMI test receiver was set to investigate the spectrum from 150 kHz to 30 MHz.

During the conducted emission test, the EMI test receiver was set with the following configurations:

Frequency Range	IF B/W
150 kHz – 30 MHz	9 kHz

Test Procedure

During the conducted emission test, the adapter was connected to the outlet of the LISN.

Maximizing procedure was performed on the six (6) highest emissions of the EUT.

All final data was recorded in the Quasi-peak and average detection mode.

Factor & Margin Calculation

The factor is calculated by adding LISN VDF (Voltage Division Factor) and Cable Loss. The basic equation is as follows:

$$\text{Factor} = \text{LISN VDF} + \text{Cable Loss}$$

The “**Over limit**” column of the following data tables indicates the degree of compliance with the applicable limit. For example, an Over limit of -7 dB means the emission is 7 dB below the limit. The equation for calculation is as follows:

$$\begin{aligned} \text{Over Limit} &= \text{Level} - \text{Limit} \\ \text{Level} &= \text{Read Level} + \text{Factor} \end{aligned}$$

Test Data

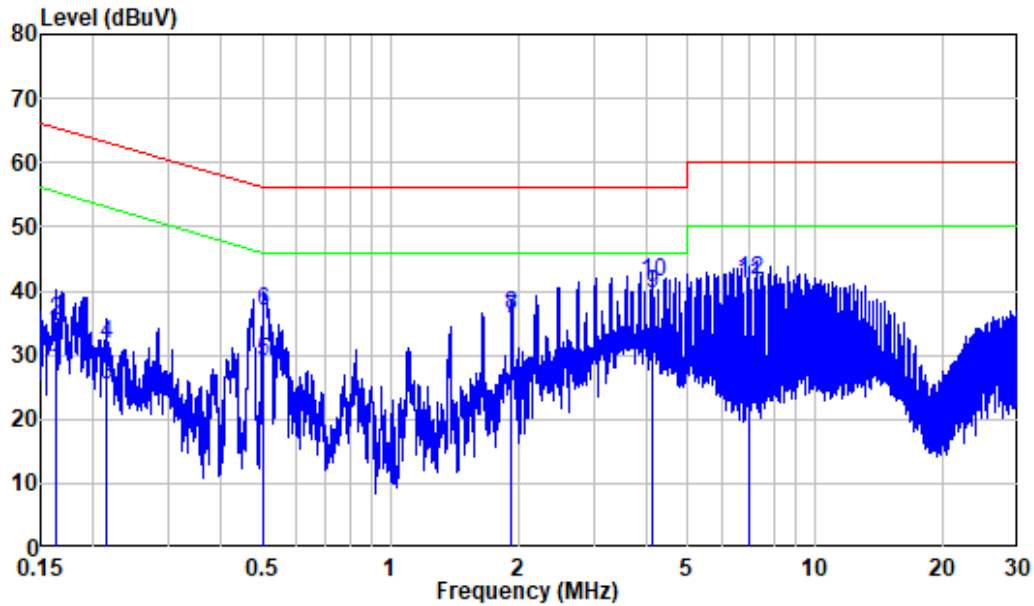
Environmental Conditions

Temperature:	23 °C
Relative Humidity:	55 %
ATM Pressure:	101.0 kPa

The testing was performed by Jason Liu on 2022-06-14.

EUT operation mode: Wireless Charging Full Load (Worst case)

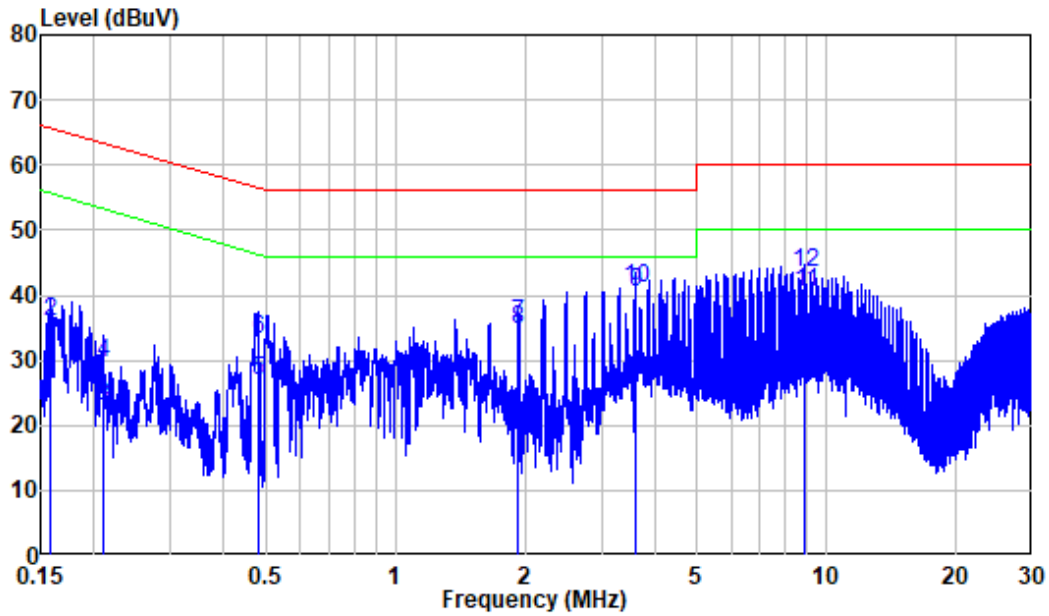
AC 120V/60 Hz, Line



Site : Shielding Room
 Condition: Line
 Mode : Full load
 Model : BY-OP-CP-116-BK
 Power : AC 120V 60Hz

	Freq	Factor	Read Level	Level	Limit Line	Over Limit	Remark
	MHz	dB	dBuV	dBuV	dBuV	dB	
1	0.163	9.80	17.96	27.76	55.32	-27.56	Average
2	0.163	9.80	25.45	35.25	65.32	-30.07	QP
3	0.214	9.80	15.49	25.29	53.06	-27.77	Average
4	0.214	9.80	22.00	31.80	63.06	-31.26	QP
5	0.502	9.80	19.11	28.91	46.00	-17.09	Average
6	0.502	9.80	27.01	36.81	56.00	-19.19	QP
7	1.918	9.82	25.72	35.54	46.00	-10.46	Average
8	1.918	9.82	26.51	36.33	56.00	-19.67	QP
9	4.147	9.84	29.83	39.67	46.00	-6.33	Average
10	4.147	9.84	31.58	41.42	56.00	-14.58	QP
11	6.983	9.87	31.28	41.15	50.00	-8.85	Average
12	6.983	9.87	31.93	41.80	60.00	-18.20	QP

AC 120V/60 Hz, Neutral



Site : Shielding Room
 Condition: Neutral
 Mode : Full load
 Model : BY-OP-CP-116-BK
 Power : AC 120V 60Hz

	Freq	Factor	Read Level	Level	Limit Line	Over Limit	Remark
	MHz	dB	dBuV	dBuV	dBuV	dB	
1	0.158	9.80	17.37	27.17	55.58	-28.41	Average
2	0.158	9.80	26.15	35.95	65.58	-29.63	QP
3	0.210	9.80	13.08	22.88	53.21	-30.33	Average
4	0.210	9.80	19.64	29.44	63.21	-33.77	QP
5	0.479	9.80	17.05	26.85	46.35	-19.50	Average
6	0.479	9.80	23.42	33.22	56.35	-23.13	QP
7	1.917	9.82	25.72	35.54	46.00	-10.46	Average
8	1.917	9.82	24.87	34.69	56.00	-21.31	QP
9	3.591	9.84	30.69	40.53	46.00	-5.47	Average
10	3.591	9.84	31.17	41.01	56.00	-14.99	QP
11	8.905	9.99	30.52	40.51	50.00	-9.49	Average
12	8.905	9.99	33.45	43.44	60.00	-16.56	QP

FCC §15.205 & §15.209 - RADIATED EMISSIONS TEST

Applicable Standard

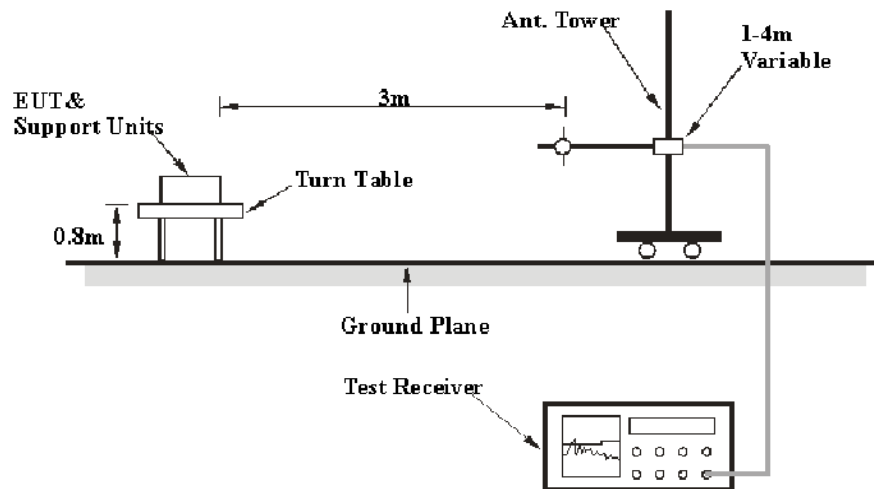
As per FCC Part 15.209

(a) Except as provided elsewhere in this subpart, the emissions from an intentional radiator shall not exceed the field strength levels specified in the following table:

Frequency (MHz)	Field strength (microvolts/meter)	Measurement distance (meters)
0.009-0.490	2400/F(kHz)	300
0.490-1.705	24000/F(kHz)	30
1.705-30.0	30	30
30-88	100**	3
88-216	150**	3
216-960	200**	3
Above 960	500	3

**Except as provided in paragraph (g), fundamental emissions from intentional radiators operating under this section shall not be located in the frequency bands 54-72 MHz, 76-88 MHz, 174-216 MHz or 470-806 MHz. However, operation within these frequency bands is permitted under other sections of this part, e.g., §§15.231 and 15.241.

EUT Setup



The radiated emission tests were performed in the 3-meter chamber test site, using the setup accordance with the ANSI C63.10-2013. The specification used was the FCC Part Subpart C limits.

The spacing between the peripherals was 10 cm.

EMI Test Receiver Setup

During the radiated emission test, the EMI test Receiver was set with the following configurations:

Frequency Range	RBW	Video B/W	Measurement
9 kHz – 150 kHz	300 Hz	1 kHz	PK
150 kHz – 30 MHz	10 kHz	30 kHz	PK
30 MHz – 1000 MHz	120 kHz	300 kHz	QP

The emission limits shown in the above table are based on measurements employing a CISPR quasi-peak detector except for the frequency bands 9-90 kHz, 110-490 kHz and above 1000 MHz. Radiated emission limits in these three bands are based on measurements employing an average detector.

If the maximized peak measured value complies with under the QP/Average limit more than 6dB, then it is unnecessary to perform QP/Average measurement.

Corrected Amplitude & Margin Calculation

The Factor is calculated by adding the Antenna Factor and Cable Loss, and subtracting the Amplifier Gain. The basic equation is as follows:

$$\text{Factor} = \text{Antenna Factor} + \text{Cable Loss} - \text{Amplifier Gain}$$

The “**Over Limit/Margin**” column of the following data tables indicates the degree of compliance with the applicable limit. For example, an Over Limit/margin of -7dB means the emission is 7dB below the limit. The equation for calculation is as follows:

$$\begin{aligned} \text{Over Limit/Margin} &= \text{Level} / \text{Corrected Amplitude} - \text{Limit} \\ \text{Level} / \text{Corrected Amplitude} &= \text{Read Level} + \text{Factor} \end{aligned}$$

Test Data

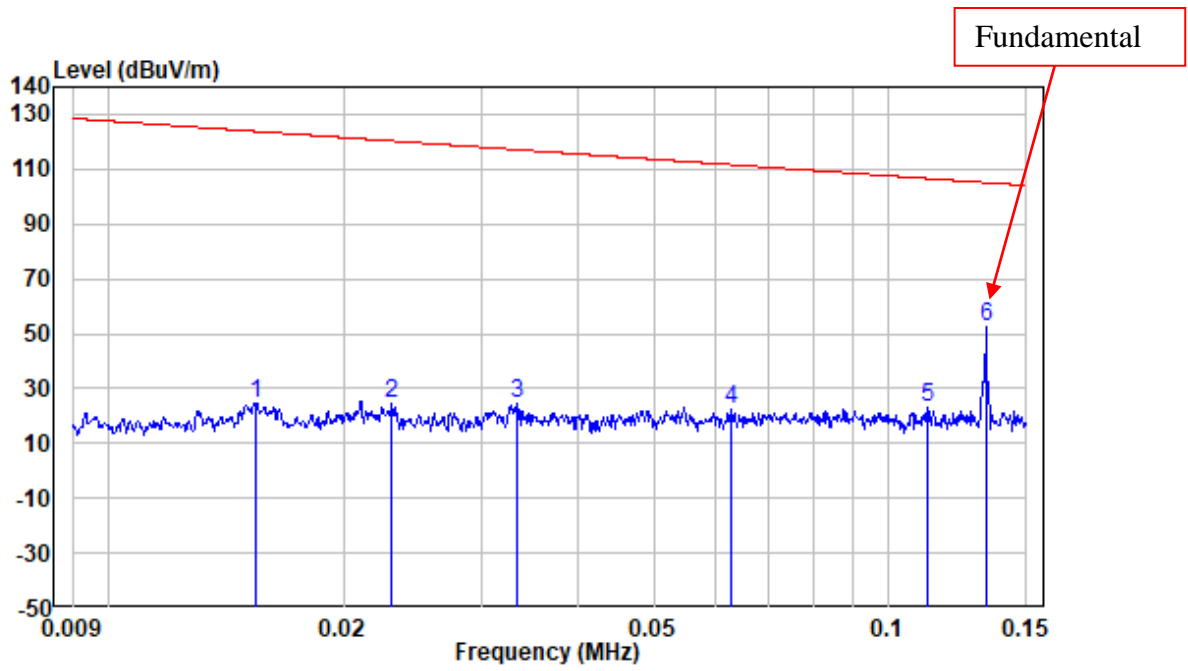
Environmental Conditions

Temperature:	25 °C
Relative Humidity:	54 %
ATM Pressure:	101.0 kPa

The testing was performed by Level Li on 2022-06-18.

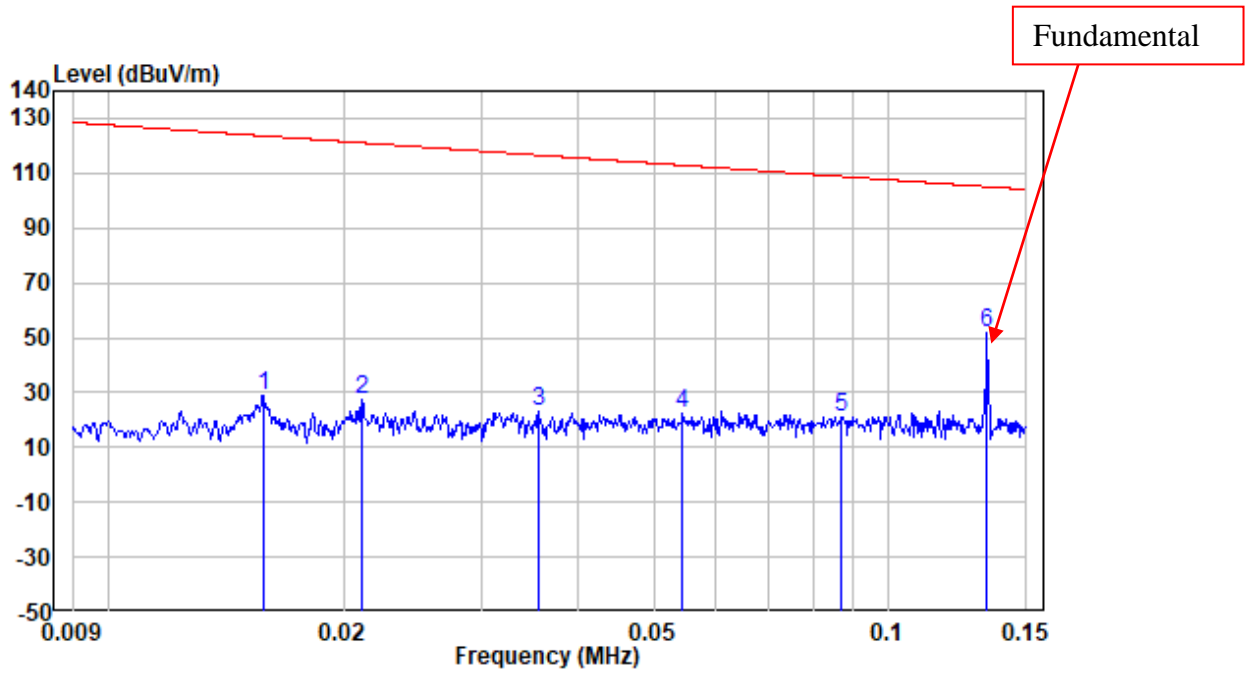
Test Mode: Wireless Charging Full Load (Worst case)

9 kHz~150kHz:



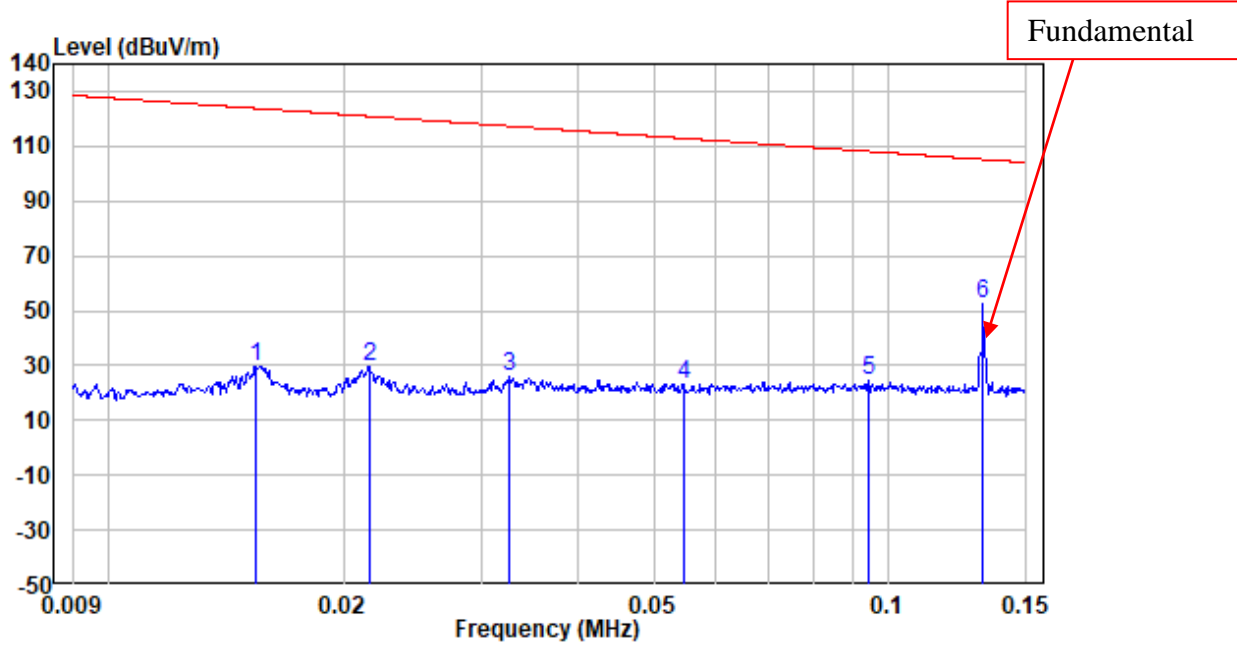
Site : chamber
 Condition: 3m
 Job No. : SZNS220602-24347E-RF
 Test Mode: Full load
 Note : Ground-parallel

	Freq	Factor	Read Level	Level	Limit Line	Over Limit	Remark
	MHz	dB/m	dBuV	dBuV/m	dBuV/m	dB	
1	0.015	-11.53	36.11	24.58	123.83	-99.25	Peak
2	0.023	-11.68	36.28	24.60	120.33	-95.73	Peak
3	0.033	-11.62	36.20	24.58	117.13	-92.55	Peak
4	0.063	-11.56	34.31	22.75	111.63	-88.88	Peak
5	0.112	-11.69	34.62	22.93	106.62	-83.69	Peak
6	0.133	-11.94	64.56	52.62	105.11	-52.49	Peak



Site : chamber
 Condition: 3m
 Job No. : SZNS220602-24347E-RF
 Test Mode: Full load
 Note : Perpendicular

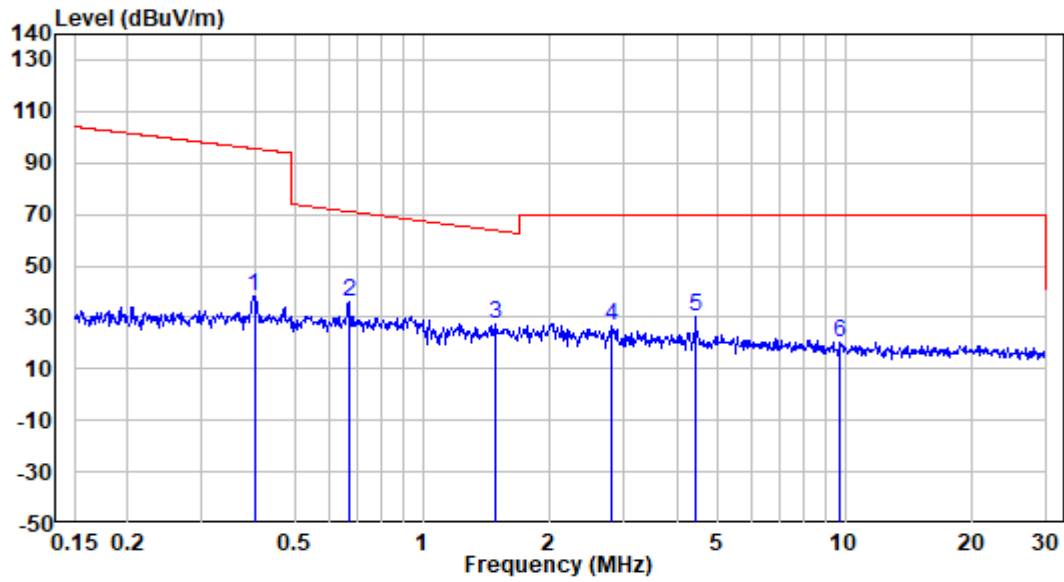
	Read	Limit	Over	
Freq	Factor	Level	Level	Line
MHz	dB/m	dBuV	dBuV/m	dBuV/m
1	0.016	-11.54	40.17	28.63
2	0.021	-11.69	39.44	27.75
3	0.036	-11.61	34.96	23.35
4	0.054	-11.54	34.07	22.53
5	0.087	-11.57	32.59	21.02
6	0.134	-11.94	63.69	51.75



Site : chamber
 Condition: 3m
 Job No. : SZNS220602-24347E-RF
 Test Mode: Full load
 Note : Parallel

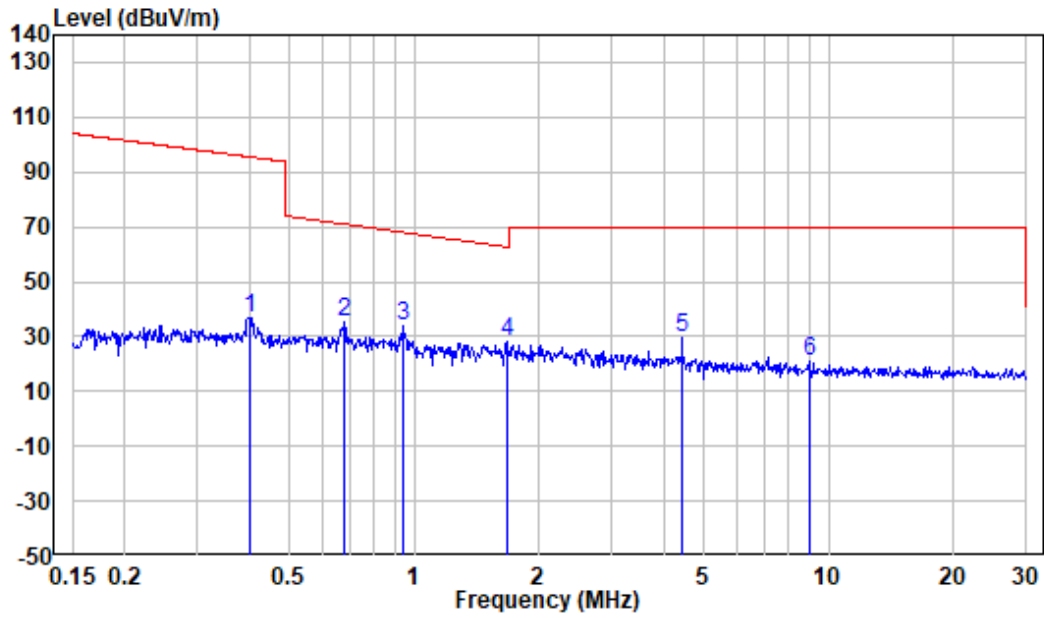
	Read	Limit	Over	
Freq	Factor	Level	Level	Line
MHz	dB/m	dBuV	dBuV/m	dBuV/m
1	0.015	-11.53	41.42	29.89
2	0.022	-11.68	41.38	29.70
3	0.033	-11.62	37.87	26.25
4	0.055	-11.54	34.95	23.41
5	0.094	-11.56	35.78	24.22
6	0.132	-11.92	64.45	52.53

150kHz~30MHz:



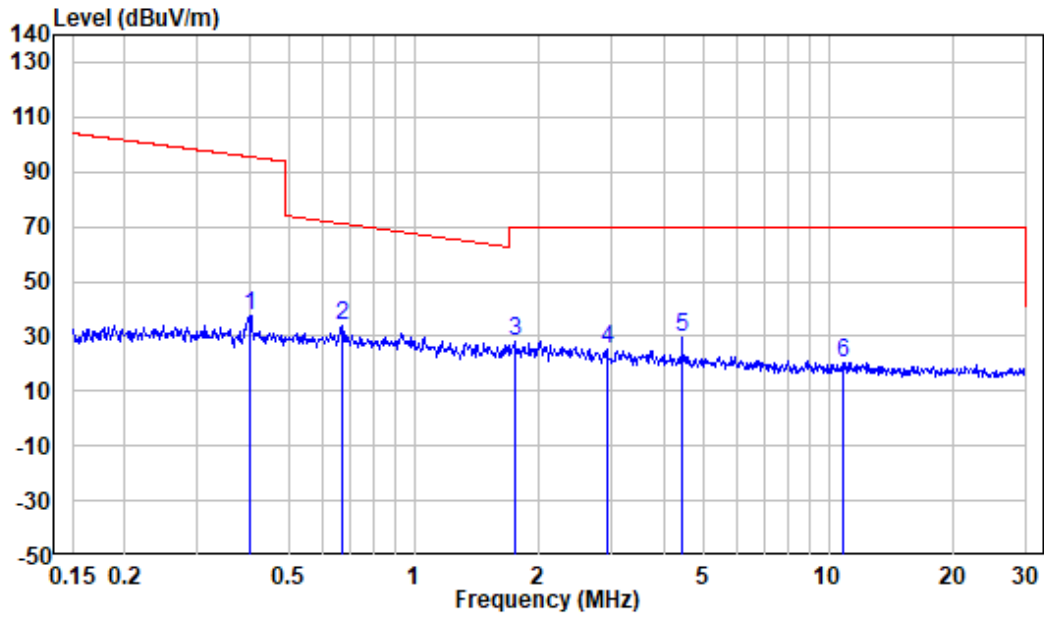
Site : chamber
 Condition: 3m
 Job No. : SZNS220602-24347E-RF
 Test Mode: Full load
 Note : Ground-parallel

	Freq	Factor	Read Level	Level	Limit Line	Over Limit	Remark
	MHz	dB/m	dBuV	dBuV/m	dBuV/m	dB	
1	0.400	-11.70	50.03	38.33	95.57	-57.24	Peak
2	0.668	-11.82	47.71	35.89	71.05	-35.16	Peak
3	1.495	-11.45	38.88	27.43	63.90	-36.47	Peak
4	2.794	-11.77	38.23	26.46	69.54	-43.08	Peak
5	4.430	-11.69	41.83	30.14	69.54	-39.40	Peak
6	9.705	-10.99	31.32	20.33	69.54	-49.21	Peak



Site : chamber
 Condition: 3m
 Job No. : SZNS220602-24347E-RF
 Test Mode: Full load
 Note : Perpendicular

	Freq	Factor	Read Level	Level	Limit Line	Over Limit	Remark
	MHz	dB/m	dBuV	dBuV/m	dBuV/m	dB	
1	0.402	-11.70	48.65	36.95	95.52	-58.57	Peak
2	0.679	-11.83	47.27	35.44	70.91	-35.47	Peak
3	0.943	-11.66	45.23	33.57	67.99	-34.42	Peak
4	1.671	-11.42	39.39	27.97	62.92	-34.95	Peak
5	4.430	-11.69	41.45	29.76	69.54	-39.78	Peak
6	8.964	-11.08	32.38	21.30	69.54	-48.24	Peak

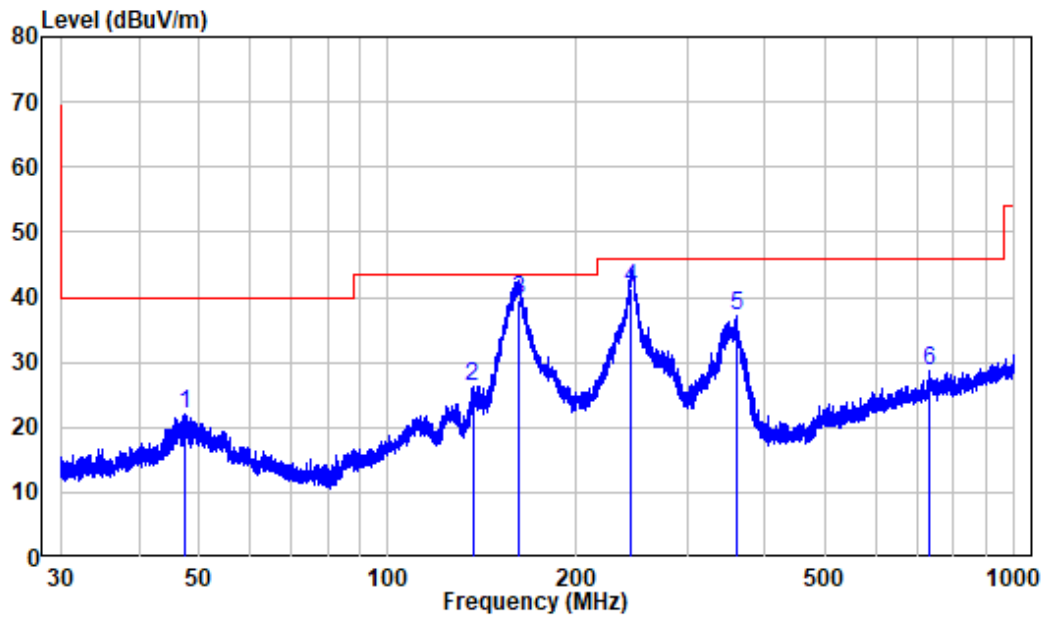


Site : chamber
 Condition: 3m
 Job No. : SZNS220602-24347E-RF
 Test Mode: Full load
 Note : Parallel

	Freq	Factor	Read Level	Level	Limit Line	Over Limit	Remark
	MHz	dB/m	dBuV	dBuV/m	dBuV/m	dB	
1	0.402	-11.70	49.37	37.67	95.52	-57.85	Peak
2	0.668	-11.82	45.93	34.11	71.05	-36.94	Peak
3	1.753	-11.39	39.56	28.17	69.54	-41.37	Peak
4	2.915	-11.83	37.41	25.58	69.54	-43.96	Peak
5	4.430	-11.69	41.00	29.31	69.54	-40.23	Peak
6	10.790	-10.91	31.50	20.59	69.54	-48.95	Peak

30MHz~1GHz:

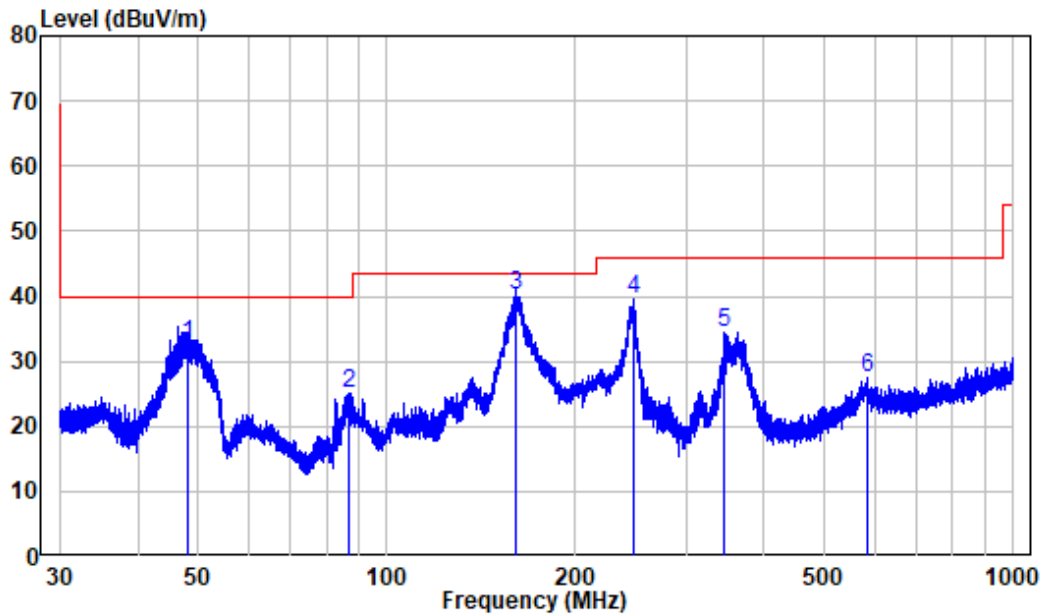
Horizontal



Site : chamber
 Condition: 3m HORIZONTAL
 Job No. : SZNS220602-24347E-RF
 Test Mode: Full load

	Freq	Factor	Read Level	Level	Limit Line	Over Limit	Remark
	MHz	dB/m	dBuV	dBuV/m	dBuV/m	dB	
1	47.326	-10.00	32.06	22.06	40.00	-17.94	Peak
2	136.520	-15.15	41.28	26.13	43.50	-17.37	Peak
3	161.262	-14.24	53.76	39.52	43.50	-3.98	QP
4	244.446	-10.61	51.84	41.23	46.00	-4.77	QP
5	361.239	-7.65	44.65	37.00	46.00	-9.00	Peak
6	731.279	-0.85	29.51	28.66	46.00	-17.34	Peak

Vertical



Site : chamber
 Condition: 3m VERTICAL
 Job No. : SZNS220602-24347E-RF
 Test Mode: Full load

	Freq	Factor	Read Level	Limit Level	Limit Line	Over Limit	Remark
	MHz	dB/m	dBuV	dBuV/m	dBuV/m	dB	
1	47.931	-10.00	42.52	32.52	40.00	-7.48	QP
2	86.731	-14.97	39.98	25.01	40.00	-14.99	Peak
3	160.909	-14.24	54.40	40.16	43.50	-3.34	QP
4	247.031	-10.65	50.06	39.41	46.00	-6.59	Peak
5	345.898	-7.23	41.65	34.42	46.00	-11.58	Peak
6	586.330	-2.93	30.37	27.44	46.00	-18.56	Peak

FCC§15.215(c) - 20dB EMISSION BANDWIDTH

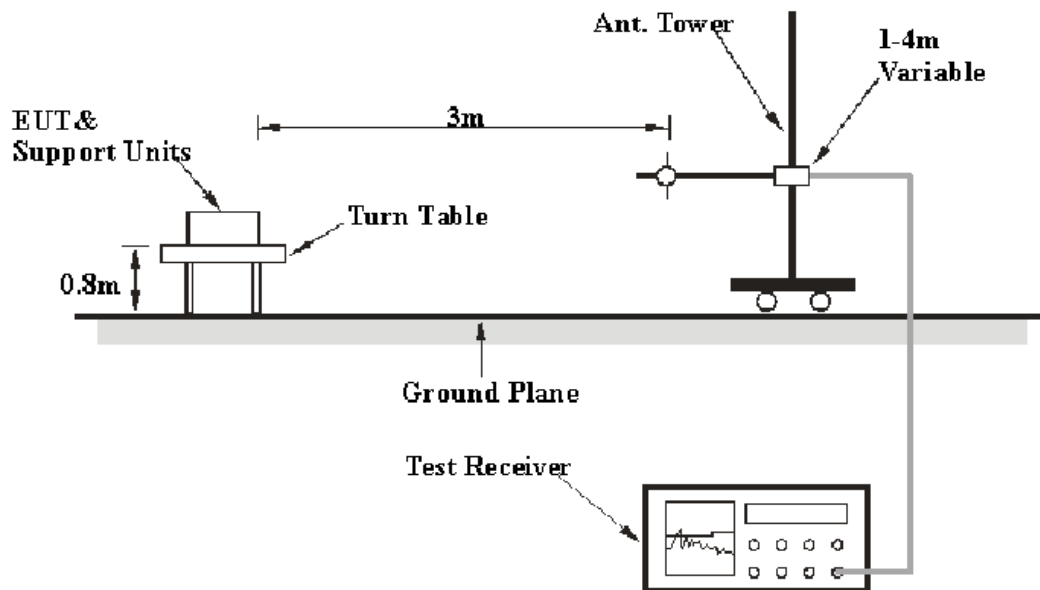
Applicable Standard

Intentional radiators operating under the alternative provisions to the general emission limits, as contained in § 15.217 through 15.257 and in Subpart E of this part, must be designed to ensure that the 20 dB bandwidth of the emission, or whatever bandwidth may otherwise be specified in the specific rule section under which the equipment operates, is contained within the frequency band designated in the rule section under which the equipment is operated.

Test Procedure

According to ANSI C63.10-2013, section 6.9.2

Measure the frequency difference of two frequencies that were attenuated 20 dB from the reference level. Record the frequency difference as the emission bandwidth.



Test Data

Environmental Conditions

Temperature:	23 °C
Relative Humidity:	56 %
ATM Pressure:	101.1 kPa

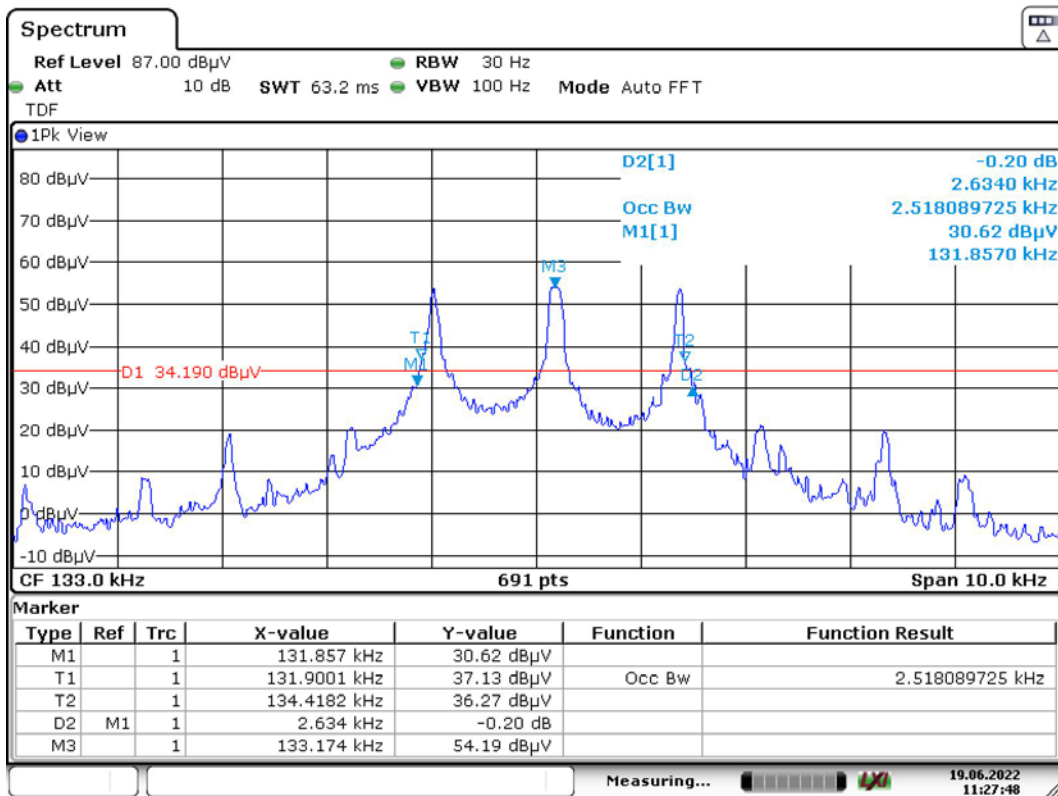
The testing was performed by Jason Liu on 2022-06-19.

Test Mode: Transmitting

Please refer to the following table and plots.

Test Frequency (kHz)	20dB Bandwidth (kHz)	99% Occupied Bandwidth (kHz)
133	2.634	2.518

20 dB Emission Bandwidth & OBW



Date: 19.JUN.2022 11:27:49

******* END OF REPORT *******