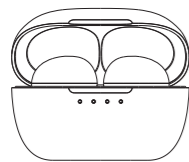


## INSTRUCTION MANUAL



True Wireless Earbuds

Model NO.: HM-AU-BE-218

Thank you for purchasing your new true wireless earbuds.

We recommend that you spend some time reading this instruction manual in order to fully understand all the operational features it offers.

Read all the safety instructions carefully before use and keep this instruction manual for future reference.

### Safety Rules

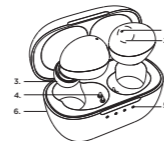
1. Charge the earbuds and the charging case at least once every 6 months.
2. Do not store the product in extreme temperature (below 0 C or above 45 C)
3. Do not use chemicals or detergents to clean the product.
4. Do not drop or knock the product on hard surfaces.
5. Do not scrape the surface of product with sharp objects.
6. Do not try to take the product apart.

### In the Box

Wireless Earbuds  
Portable Charging Case  
Type-C Charging Cable  
User manual  
Ear-Tips x 4 (S/M/L)

-1-

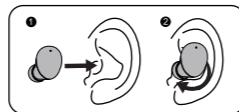
### Product Overview



1. Indicator/Microphone
2. Touch Area
3. Silicone Ear-tips
4. Earphones Charging Contacts
5. Charging Case Indicator
6. USB-C Charging Port

### Find Your Fit

Choose the size of silicone ear-tips that you feel the most comfortable with.



-2-

### Specification

Bluetooth version	V5.1
BT profiles support	SPP/HFP/A2DP/AVCTP/HID
Bluetooth range	10 m / 33 ft
Frequency response	20 Hz - 20 kHz
Battery capacity	50mAh for each earbuds 400mAh for charging case
Charging time	Around 1.2 hour
Playing time	Around 5 hours Up to 20 hours with charging case
Talk time	3-5 hours
Earbuds weight	5g each
Case weight	10g

-3-

### Power ON/OFF

Power ON

1. Take the earbuds out of the charging case the earbuds will power on automatically.
2. Long press the left and right touch area of the earbuds for three seconds, the earbuds indicator light flashes red and blue, and the earbuds powered on.



Power OFF

1. Put the earbuds into the charging case, the earbuds will power off automatically.
2. Long press the left and right touch area of the earbuds for eight seconds, the earbuds indicator light turn off, and the earbuds powered off.

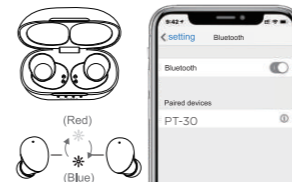


-4-

### Pairing

1. When using PT-30 True Wireless Earbuds the first time. Take the earbuds out of the charging case, the earbuds indicator lights flash red and blue the "pairing mode" is on.
2. Turn on Bluetooth on your mobile device.
3. Search and select "PT-30".
4. When successfully connected, the blue LEDs flash every 5 seconds.

Remark: Earbuds power off when they stay out of range for over two minutes.



-5-

### Charging

1. Fully charge both the earbuds and the charging case before the first use.
2. To prevent damage, use the provided USB-C cable.
3. Fully dry off the earbuds and the USB port before charging.
4. Charging takes around 1.2 hours.
5. When fully charged, all LEDs will stay on.

EARBUDS	LED Status	State
• Red LED	⏻	Charging
• No LED	⏻	Fully Charged
CHARGING CASE	LED Status	State
• Blue LED blinks	⏻	Charging
• Four Blue LED	⏻	Fully Charged

### Multi Functions

Pause/Play	Single tap L/R
Previous Song	Double tap L
Next Song	Double tap R
Volume Down	Long press L
Volume Up	Long press R
Active Siri/Google Assitant	Triple tap L/R
Answer/End a call	Tap L/R
Refuse the call	Long press L/R

-6-

### Factory reset

1. Ensure L&R disconnect to any device. (turn off the bluetooth device connected before)
2. Triple tap the touch area of the left and right earbud.
3. When hear the prompt tone, The earbuds is ready to pair with your device now.

### WARNING

1. Listening to earbuds at high volume levels, particularly over extended periods of time, may damage your hearing.
2. Supervise children when using equipment. This product is not a toy.
3. The small parts included with this product can be a choking hazard. This product is not intended for use by small children and should be kept away from children under 3 years of age.

**FCC Warning**  
This device complies with part 15 of the FCC rules. Operation is subject to the following two conditions: (1) this device may not cause harmful interference, and (2) this device must accept any interference received, including interference that may cause undesired operation.  
Changes or modifications not expressly approved by the party responsible for compliance could void the user's authority to operate the equipment.  
NOTE: This equipment has been tested and found to comply with the limits for a Class B digital device, pursuant to part 15 of the FCC rules. These limits are designed to provide reasonable protection against harmful interference in a residential installation. This equipment generates uses and can radiate radio frequency energy and, if not installed and used in accordance with the instructions, may cause harmful interference to radio communications. However, there is no guarantee that interference will not occur in a particular installation. If this equipment does cause harmful interference to radio or television reception, which can be determined by turning the equipment off and on, the user is encouraged to try to correct the interference by one or more of the following measures:  
• Reorient or relocate the receiving antenna.  
• Increase the separation between the equipment and receiver.  
• Connect the equipment into an outlet on a circuit different from that to which the receiver is connected.  
• Consult the dealer or an experienced radio/TV technician for help.  
**Radiation Exposure Statement**  
The device has been evaluated to meet general RF exposure requirement. The device can be used as portable exposure condition without restriction.

**CE RoHS**  
MADE IN CHINA



-7-