

|  |
|--|
| <b>Appendix A:SAR System performance Check Plots</b> |
| <b>Table of contents</b>                             |
| <b>System Performance Check-D2450</b>                |
| <b>System Performance Check-D5200</b>                |
| <b>System Performance Check-D5800</b>                |

Test Laboratory: CTI SAR Lab

**Systemcheck 2450-Head****DUT: D2450V2 - SN959; Type: D2450V2; Serial: SN959**

Communication System: UID 0, CW (0); Communication System Band: D2450 (2450.0 MHz); Frequency: 2450 MHz; Duty Cycle: 1:1

Medium parameters used:  $f = 2450$  MHz;  $\sigma = 1.804$  S/m;  $\epsilon_r = 39.813$ ;  $\rho = 1000$  kg/m<sup>3</sup>

Phantom section: Flat Section

DASY Configuration:

- Probe: EX3DV4 - SN7328; ConvF(7.68, 7.68, 7.68); Calibrated: 2/8/2020;
- Sensor-Surface: 1.4mm (Mechanical Surface Detection),  $z = 1.0, 31.0$
- Electronics: DAE4 Sn1458; Calibrated: 1/8/2020
- Phantom: ELI v6.0; Type: QDOVA003AA; Serial: 2024
- DASY52 52.8.8(1222); SEMCAD X 14.6.10(7331)

**Configuration/d=10mm,Pin=250mW/Area Scan (10x10x1):** Measurement grid:  $dx=12$ mm,  $dy=12$ mm

Maximum value of SAR (measured) = 16.8 W/kg

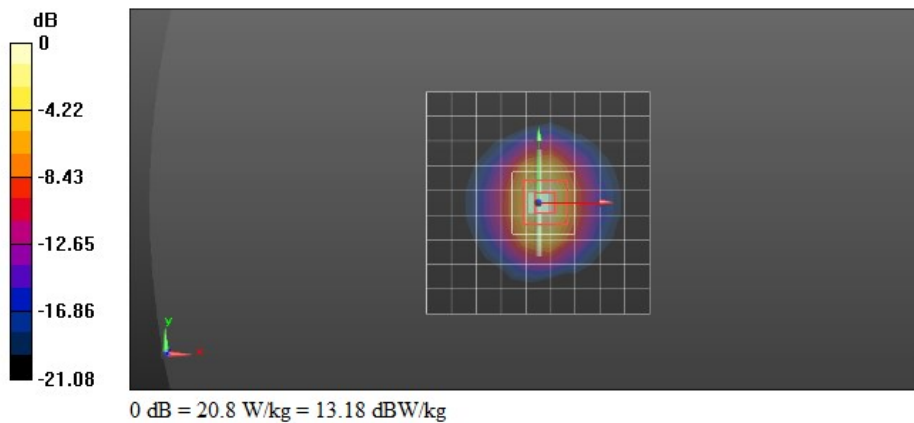
**Configuration/d=10mm,Pin=250mW/Zoom Scan (7x7x7)/Cube 0:** Measurement grid:  $dx=5$ mm,  $dy=5$ mm,  $dz=5$ mm

Reference Value = 108.8 V/m; Power Drift = -0.18 dB

Peak SAR (extrapolated) = 25.6 W/kg

**SAR(1 g) = 12.5 W/kg; SAR(10 g) = 5.88 W/kg**

Maximum value of SAR (measured) = 20.8 W/kg



Test Laboratory: CTI SAR Lab

**Systemcheck 5200-Head****DUT: D5GHzV2 - SN1208; Type: D5GHzV2; Serial: SN1208**

Communication System: UID 0, CW (0); Communication System Band: D5GHz (5000.0 - 6000.0 MHz); Frequency: 5200 MHz; Duty Cycle: 1:1

Medium parameters used:  $f = 5200$  MHz;  $\sigma = 4.632$  S/m;  $\epsilon_r = 36.17$ ;  $\rho = 1000$  kg/m<sup>3</sup>

Phantom section: Flat Section

DASY Configuration:

- Probe: EX3DV4 - SN7328; ConvF(5.46, 5.46, 5.46); Calibrated: 2/8/2020;
- Sensor-Surface: 1.4mm (Mechanical Surface Detection),  $z = 1.0, 23.0$
- Electronics: DAE4 Sn1458; Calibrated: 1/8/2020
- Phantom: ELI v6.0; Type: QDOVA003AA; Serial: 2024
- DASY52 52.8.8(1222); SEMCAD X 14.6.10(7331)

**Configuration/d=10mm,Pin=100mW/Area Scan (11x11x1):** Measurement grid: dx=10mm, dy=10mm

Maximum value of SAR (measured) = 15.5 W/kg

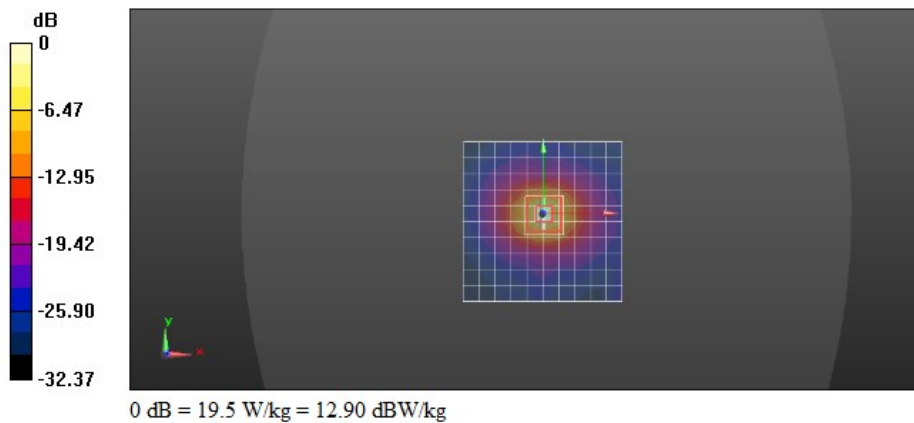
**Configuration/d=10mm,Pin=100mW/Zoom Scan (7x7x12)/Cube 0:** Measurement grid: dx=4mm, dy=4mm, dz=2mm

Reference Value = 43.95 V/m; Power Drift = -0.17 dB

Peak SAR (extrapolated) = 31.8 W/kg

**SAR(1 g) = 7.83 W/kg; SAR(10 g) = 2.29 W/kg**

Maximum value of SAR (measured) = 19.5 W/kg



Test Laboratory: CTI SAR Lab

**Systemcheck 5800-Head****DUT: D5GHzV2 - SN1208; Type: D5GHzV2; Serial: SN1208**

Communication System: UID 0, CW (0); Communication System Band: D5GHz (5000.0 - 6000.0 MHz); Frequency: 5800 MHz; Duty Cycle: 1:1

Medium parameters used:  $f = 5800$  MHz;  $\sigma = 5.414$  S/m;  $\epsilon_r = 35.082$ ;  $\rho = 1000$  kg/m<sup>3</sup>

Phantom section: Flat Section

DASY Configuration:

- Probe: EX3DV4 - SN7328; ConvF(4.9, 4.9, 4.9); Calibrated: 2/8/2020;
- Sensor-Surface: 1.4mm (Mechanical Surface Detection),  $z = 1.0, 31.0$
- Electronics: DAE4 Sn1458; Calibrated: 1/8/2020
- Phantom: ELI v6.0; Type: QDOVA003AA; Serial: 2024
- DASY52 52.8.8(1222); SEMCAD X 14.6.10(7331)

**Configuration/d=10mm,Pin=100mW/Area Scan (11x11x1):** Measurement grid:  $dx=10$ mm,  $dy=10$ mm

Maximum value of SAR (measured) = 16.3 W/kg

**Configuration/d=10mm,Pin=100mW/Zoom Scan (8x8x16)/Cube 0:** Measurement grid:  $dx=4$ mm,  $dy=4$ mm,  $dz=2$ mm

Reference Value = 38.65 V/m; Power Drift = -0.00 dB

Peak SAR (extrapolated) = 38.4 W/kg

**SAR(1 g) = 8.56 W/kg; SAR(10 g) = 2.45 W/kg**

Maximum value of SAR (measured) = 21.9 W/kg

