



Shenzhen CTL Testing Technology Co., Ltd.
Tel: +86-755-89486194 E-mail: ctl@ctl-lab.com

TEST REPORT

47 CFR FCC Part 15 Subpart C 15.231

Report Reference No. : CTL2111101021-WF

Compiled by: Happy Guo
(position+printed name+signature) (File administrators)

Tested by: Gary Gao
(position+printed name+signature) (Test Engineer)

Approved by: Ivan Xie
(position+printed name+signature) (Manager)



Product Name : CHASING RGB REMOTE

Model/Type reference : HE-CHASE-RM

List Model(s)..... : See next page

Trade Mark..... : Metra Electronics

FCC ID..... : 2AHL8HE-CHASE-RM

Applicant's name : Metra Electronics

Address of applicant : 460 Walker St, Holly Hill Florida 32117 United States

Test Firm..... : Shenzhen CTL Testing Technology Co., Ltd.

Address of Test Firm : Floor 1-A, Baisha Technology Park, No.3011, Shahexi Road, Nanshan District, Shenzhen, China 518055

Test specification..... :

Standard : 47 CFR FCC Part 15 Subpart C 15.231

TRF Originator : Shenzhen CTL Testing Technology Co., Ltd.

Master TRF..... : Dated 2011-01

Date of receipt of test item : Nov. 12, 2021

Date of Test Date..... : Nov. 12, 2021–Nov. 24, 2021

Data of Issue..... : Nov. 25, 2021

Result..... : Pass

Shenzhen CTL Testing Technology Co., Ltd. All rights reserved.

This publication may be reproduced in whole or in part for non-commercial purposes as long as the Shenzhen CTL Testing Technology Co., Ltd. is acknowledged as copyright owner and source of the material. Shenzhen CTL Testing Technology Co., Ltd. takes no responsibility for and will not assume liability for damages resulting from the reader's interpretation of the reproduced material due to its placement and context.

TEST REPORT

Test Report No. :	CTL2111101021-WF	Nov. 25, 2021
		Date of issue

Equipment under Test : CHASING RGB REMOTE

Sample No. CTL211110102-1-S001

Model /Type : HE-CHASE-RM

Listed Models : HE-CHASE-W14, HE-CHASE-W155, HE-CHASE-W17, HE-CHASE-4KT, HE-CHASE-8KT, HE-CHASE-UNDGKT, JP-RGB18-CHASE, JP-RGB07-CHASE, MPS-CHWP-1, MPS-CHWP-2, JP-707RGBKT, JP-708RGBKT, JP-709RGBKT, JP-710RGBKT, BC-707RGBKT, BC-708RGBKT, BC-CHASE-K1, BC-CHASE-K2, MPS-UNDG-KT1, MPS-UNDG-KT2, JP-901RGBKT, JP-902RGBKT, BC-CHASE-K3, BC-CHASE-K4, HE-CHASE-FD1, HE-CHASE-FD2, HE-CHASE-GM1, HE-CHASE-GM2, HE-CHASE-RAM1, HE-CHASE-CRY1, HE-CHASE-K1, HE-CHASE-K2, HE-CHASE-K3, HE-CHASE-K4, HE-CHASE-K5, HE-CHASE-K6, HE-CHASE-5M, ML-CHASE-K1, ML-CHASE-K2, ML-CHASE-K3, ML-CHASE-K4

Applicant : **Metra Electronics**

Address : 460 Walker St, Holly Hill Florida 32117 United States

Manufacturer : **Metra Electronics**

Address : 460 Walker St, Holly Hill Florida 32117 United States

Test result	Pass *
--------------------	---------------

* In the configuration tested, the EUT complied with the standards specified page 5.

The test results presented in this report relate only to the object tested.

This report shall not be reproduced, except in full, without the written approval of the issuing testing laboratory.

Table of Contents

Page

1. SUMMARY	5
1.1. TEST STANDARDS.....	5
1.2. TEST DESCRIPTION.....	5
1.3. TEST FACILITY	6
1.4. STATEMENT OF THE MEASUREMENT UNCERTAINTY.....	6
2. GENERAL INFORMATION	8
2.1. ENVIRONMENTAL CONDITIONS	8
2.2. GENERAL DESCRIPTION OF EUT	8
2.3. EQUIPMENTS USED DURING THE TEST	8
2.4. RELATED SUBMITTAL(S) / GRANT (S).....	9
2.5. MODIFICATIONS.....	9
3. TEST CONDITIONS AND RESULTS	10
3.1. CONDUCTED EMISSION (AC MAIN)	10
3.2. RADIATED EMISSION	11
3.3. 20dB BANDWIDTH.....	18
3.4. DEACTIVATION TIME	19
3.5. ANTENNA REQUIREMENT.....	20
4. TEST SETUP PHOTOS OF THE EUT	21
5. EXTERNAL AND INTERNAL PHOTOS OF THE EUT.....	22

1. SUMMARY

1.1. Test Standards

The tests were performed according to following standards:

[FCC Rules Part 15.231](#): Periodic operation in the band 40.66-40.70 MHz and above 70 MHz.

[ANSI C63.10:2013](#) : American National Standard for Testing Unlicensed Wireless Devices

1.2. Test Description

FCC and IC Requirements		
FCC Part 15.207	Conducted Emission	N/A
FCC Part 15.231(a)(2)	Automatically Deactivate	PASS
FCC Part 15.231(b)	Electric Field Strength of Fundamental Emission	PASS
FCC Part 15.205 & 15.209 & 15.231(b)	Electric Field Strength of Spurious Emission	PASS
FCC Part 15.231(c)	-20dB bandwidth	PASS

Remark: The measurement uncertainty is not included in the test result.

1.3. Test Facility

1.3.1 Address of the test laboratory

Shenzhen CTL Testing Technology Co.,Ltd.

Floor 1-A, Baisha Technology Park, No. 3011, Shahexi Road, Nanshan, Shenzhen 518055 China

There is one 3m semi-anechoic chamber and two line conducted labs for final test. The Test Sites meet the requirements in documents ANSI C63.4 and CISPR 22/EN 55022 requirements.

1.3.2 Laboratory accreditation

The test facility is recognized, certified, or accredited by the following organizations:

CNAS-Lab Code: L7497

Shenzhen CTL Testing Technology Co., Ltd. has been assessed and proved to be in compliance with CNAS-CL01 Accreditation Criteria for Testing and Calibration Laboratories (identical to ISO/IEC 17025: 2005 General Requirements) for the Competence of Testing and Calibration Laboratories.

A2LA-Lab Cert. No. 4343.01

Shenzhen CTL Testing Technology Co., Ltd, EMC Laboratory has been accredited by A2LA for technical competence in the field of electrical testing, and proved to be in compliance with ISO/IEC 17025: 2005 General Requirements for the Competence of Testing and Calibration Laboratories and any additional program requirements in the identified field of testing.

IC Registration No.: 9618B

CAB identifier: CN0041

The 3m alternate test site of Shenzhen CTL Testing Technology Co., Ltd. EMC Laboratory has been registered by Innovation, Science and Economic Development Canada to test to Canadian radio equipment requirements with Registration No.: 9618B on Jan. 22, 2019.

FCC-Registration No.: 399832

Designation No.: CN1216

Shenzhen CTL Testing Technology Co., Ltd. EMC Laboratory has been registered and fully described in a report filed with the (FCC) Federal Communications Commission. The acceptance letter from the FCC is maintained in our files. Registration 399832, December 08, 2017.

1.4. Statement of the measurement uncertainty

The data and results referenced in this document are true and accurate. The reader is cautioned that there may be errors within the calibration limits of the equipment and facilities. The measurement uncertainty was calculated for all measurements listed in this test report acc. to CISPR 16 - 4 "Specification for radio disturbance and immunity measuring apparatus and methods – Part 4: Uncertainty in EMC Measurements" and is documented in the Shenzhen CTL Testing Technology Co., Ltd. quality system acc. to DIN EN ISO/IEC 17025. Furthermore, component and process variability of devices similar to that tested may result in additional deviation. The manufacturer has the sole responsibility of continued compliance of the device.

Hereafter the best measurement capability for CTL laboratory is reported:

Test	Measurement Uncertainty	Notes
Transmitter power conducted	±0.57 dB	(1)
Transmitter power Radiated	±2.20 dB	(1)
Conducted spurious emission 9KHz-40 GHz	±2.20 dB	(1)
Occupied Bandwidth	±0.01ppm	(1)

Radiated Emission 30~1000MHz	$\pm 4.10\text{dB}$	(1)
Radiated Emission Above 1GHz	$\pm 4.32\text{dB}$	(1)
Conducted Disturbance 0.15~30MHz	$\pm 3.20\text{dB}$	(1)

(1) This uncertainty represents an expanded uncertainty expressed at approximately the 95% confidence level using a coverage factor of $k=2$.

2. GENERAL INFORMATION

2.1. Environmental conditions

During the measurement the environmental conditions were within the listed ranges:

Normal Temperature:	25°C
Relative Humidity:	55 %
Air Pressure:	101 kPa

2.2. General Description of EUT

Product Name:	CHASING RGB REMOTE
Model/Type reference:	HE-CHASE-RM
Power supply:	DC3.0V from Battery
Modulation:	ASK
Operation frequency:	433.92MHz
Channel number:	1
Antenna type:	PCB Antenna
Antenna gain:	0dBi

Note: For more details, please refer to the user's manual of the EUT.

2.3. Equipments Used during the Test

Test Equipment	Manufacturer	Model No.	Serial No.	Calibration Date	Calibration Due Date
LISN	R&S	ENV216	3560.6550.1 2	2021/05/23	2022/05/22
LISN	R&S	ESH2-Z5	860014/010	2021/05/23	2022/05/22
Bilog Antenna	Sunol Sciences Corp.	JB1	A061713	2021/05/23	2022/05/22
EMI Test Receiver	R&S	ESCI	1166.5950.03	2021/05/23	2022/05/22
Spectrum Analyzer	Agilent	E4407B	MY41440676	2021/01/20	2022/01/19
Spectrum Analyzer	Agilent	N9020	US46220290	2021/01/15	2022/01/14
Controller	EM Electronics	EM 1000	060859	2021/05/25	2022/05/24
Horn Antenna	Sunol Sciences Corp.	DRH-118	A062013	2021/05/23	2022/05/22
Active Loop Antenna	Da Ze	ZN30900A	/	2021/05/23	2022/05/22
Amplifier	Agilent	8449B	3008A02306	2021/05/23	2022/05/22
Amplifier	Agilent	8447D	2944A10176	2021/05/23	2022/05/22
Temperature/Humidity Meter	Gangxing	CTH-608	02	2021/06/15	2022/06/14
High-Pass Filter	micro-tranics	HPM50108	G174	2021/06/15	2022/06/14
High-Pass Filter	micro-tranics	HPM50111	G142	2021/06/15	2022/06/14
Coaxial Cables	HUBER+SUHN	SUCOFLEX	10m	2021/06/15	2022/06/14

	ER	104PEA-10M			
Coaxial Cables	HUBER+SUHN ER	SUCOFLEX 104PEA-3M	3m	2021/06/15	2022/06/14
Coaxial Cables	HUBER+SUHN ER	SUCOFLEX 104PEA-3M	3m	2021/06/15	2022/06/14
RF Cable	Megalon	RF-A303	N/A	2021/06/15	2022/06/14

The calibration interval was one year

2.4. Related Submittal(s) / Grant (s)

This submittal(s) (test report) is intended to comply with Section 15.231 of the FCC Part 15, Subpart C Rules.

2.5. Modifications

No modifications were implemented to meet testing criteria.

3. TEST CONDITIONS AND RESULTS

3.1. Conducted Emission (AC Main)

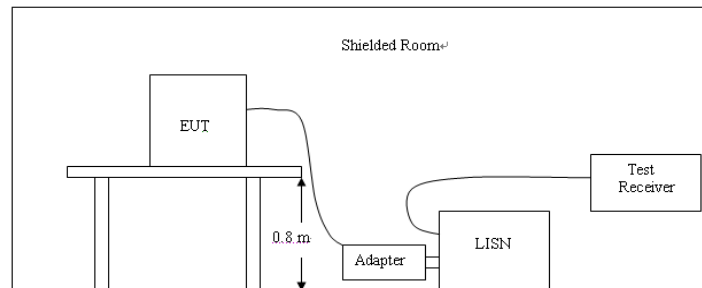
LIMIT

FCC CFR Title 47 Part 15 Subpart C Section 15.207

Frequency range (MHz)	Limit (dBuV)	
	Quasi-peak	Average
0.15-0.5	66 to 56*	56 to 46*
0.5-5	56	46
5-30	60	50

* Decreases with the logarithm of the frequency.

TEST CONFIGURATION



TEST PROCEDURE

1. The equipment was set up as per the test configuration to simulate typical actual usage per the user's manual. The EUT is a flood stand system; a wooden table with a height of 0.1 meters is used and is placed on the ground plane as per ANSI C63.10-2013.
2. Support equipment, if needed, was placed as per ANSI C63.10-2013
3. All I/O cables were positioned to simulate typical actual usage as per ANSI C63.10-2013
4. If a EUT received DC power from the USB Port of Notebook PC, the PC's adapter received AC120V/60Hz power through a Line Impedance Stabilization Network (LISN) which supplied power source and was grounded to the ground plane.
5. All support equipments received AC power from a second LISN, if any.
6. The EUT test program was started. Emissions were measured on each current carrying line of the EUT using a spectrum Analyzer / Receiver connected to the LISN powering the EUT. The LISN has two monitoring points: Line 1 (Hot Side) and Line 2 (Neutral Side). Two scans were taken: one with Line 1 connected to Analyzer / Receiver and Line 2 connected to a 50 ohm load; the second scan had Line 1 connected to a 50 ohm load and Line 2 connected to the Analyzer / Receiver.
7. Analyzer / Receiver scanned from 150 KHz to 30MHz for emissions in each of the test modes.
8. During the above scans, the emissions were maximized by cable manipulation.

TEST RESULTS

Not applicable for device which is battery supply.

3.2. Radiated Emission

Limit

For intentional device, according to 15.209(a) the general requirement of field strength of radiated emission from intentional radiators at a distance of 3 meters shall not exceed the following table.

Frequency (MHz)	Distance (Meters)	Radiated (dBμV/m)	Radiated (μV/m)
0.009-0.49	3	$20\log(2400/F(KHz))+40\log(300/3)$	2400/F(KHz)
0.49-1.705	3	$20\log(24000/F(KHz))+ 40\log(30/3)$	24000/F(KHz)
1.705-30	3	$20\log(30)+ 40\log(30/3)$	30
30-88	3	40.0	100
88-216	3	43.5	150
216-960	3	46.0	200
Above 960	3	54.0	500

In addition to the provisions of 15.231(b) and RSS 210-A1.1.2, the field strength of emissions from intentional radiators operated under this section shall not exceed the following:

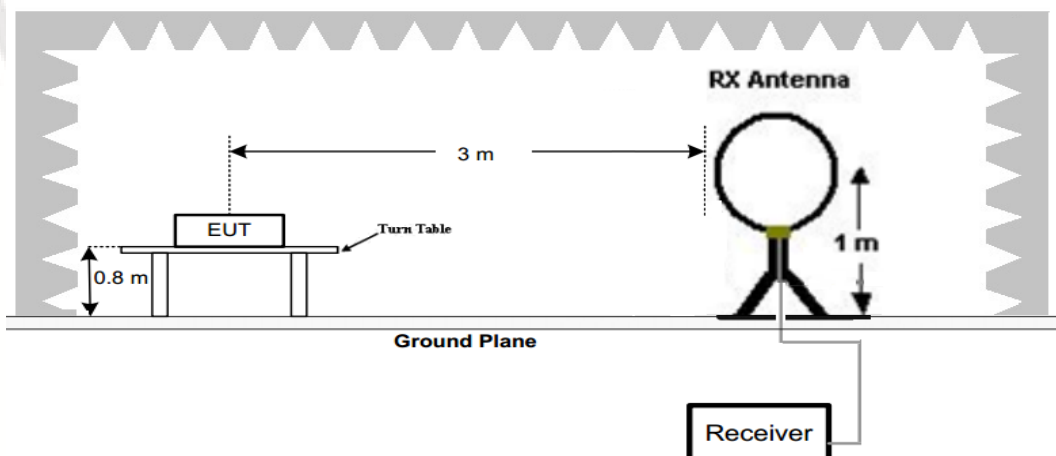
Funda-mental fre-quency (MHz)	Field strength of funda-mental (microvolts/ meter)	Field strength of spurious emissions (microvolts/meter)
40.66– 40.70.	2,250	225
70–130	1,250	125
130–174	¹ 1,250 to 3,750	¹ 125 to 375
174–260	3,750	375
260–470	¹ 3,750 to 12,500	¹ 375 to 1,250
Above 470	12,500	1,250

¹ Linear interpolations.

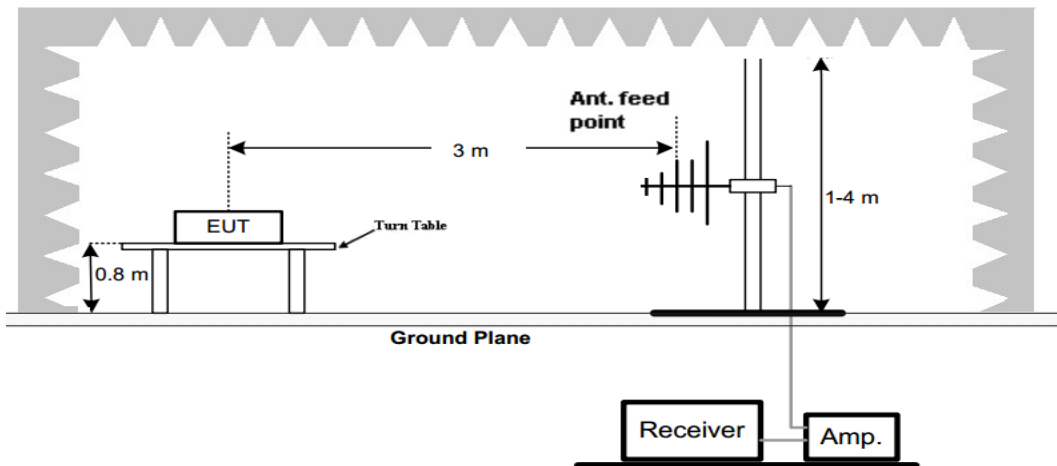
[Where F is the frequency in MHz, the formulas for calculating the maximum permitted fundamental field strengths are as follows: for the band 260-470 MHz, μV/m at 3 meters = $41.6667(F) - 7083.3333$. The maximum permitted unwanted emission level is 20 dB below the maximum permitted fundamental level.]

TEST CONFIGURATION

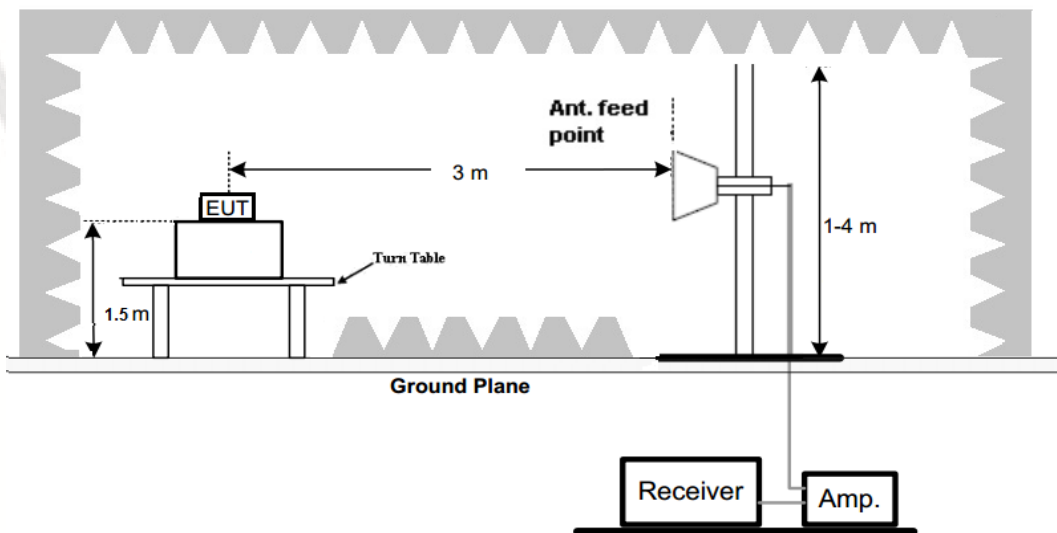
(A) Radiated Emission Test Set-Up, Frequency Below 30MHz



(B) Radiated Emission Test Set-Up, Frequency below 1000MHz



(C) Radiated Emission Test Set-Up, Frequency above 1000MHz

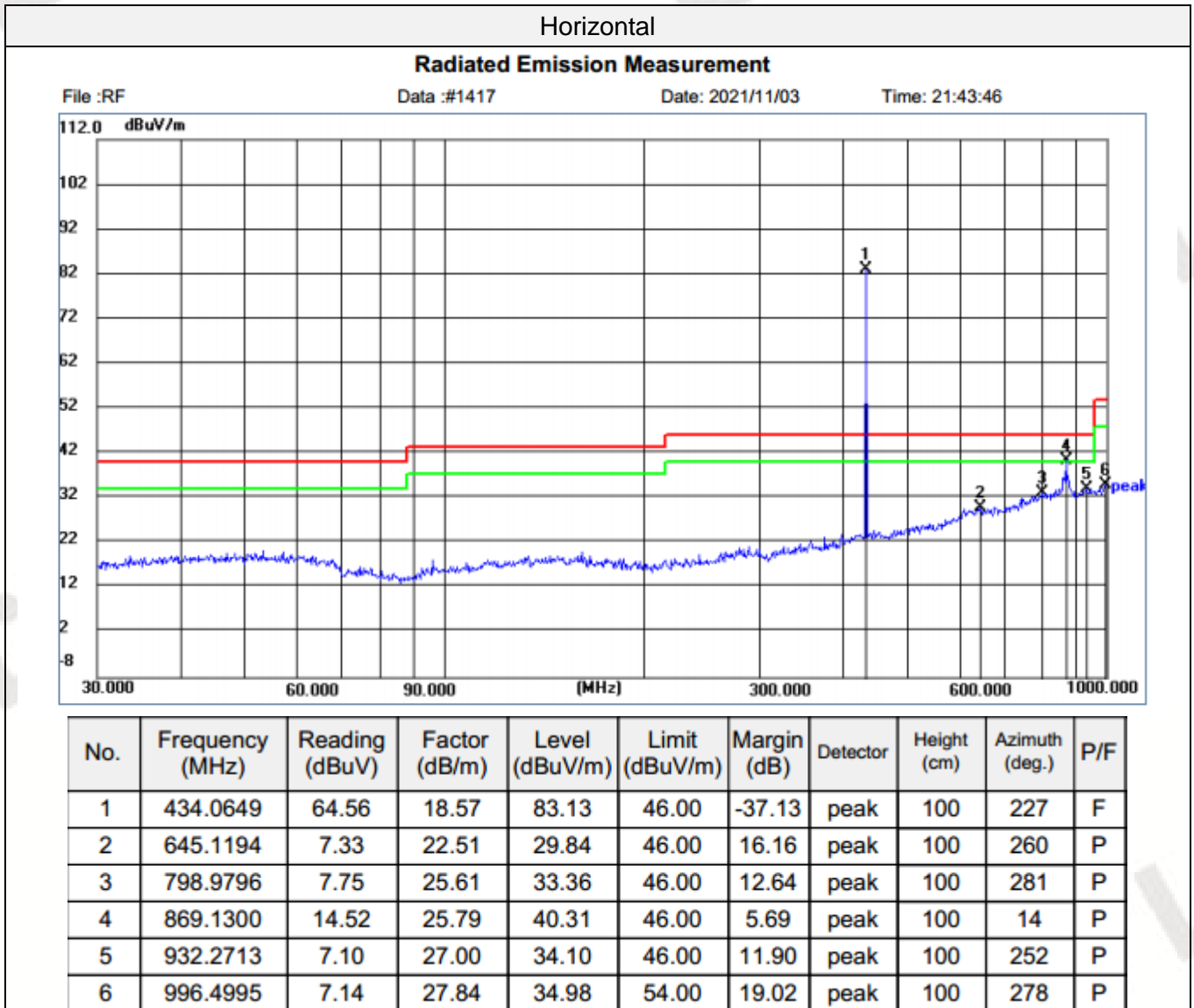


Test Procedure

1. Below 1GHz measurement the EUT is placed on a turntable which is 0.8m above ground plane, and above 1GHz measurement EUT was placed on a low permittivity and low loss tangent turn table which is 1.5m above ground plane.
2. Maximum procedure was performed by raising the receiving antenna from 1m to 4m and rotating the turn table from 0° to 360° to acquire the highest emissions from EUT
3. And also, each emission was to be maximized by changing the polarization of receiving antenna both horizontal and vertical.
4. Repeat above procedures until all frequency measurements have been completed.

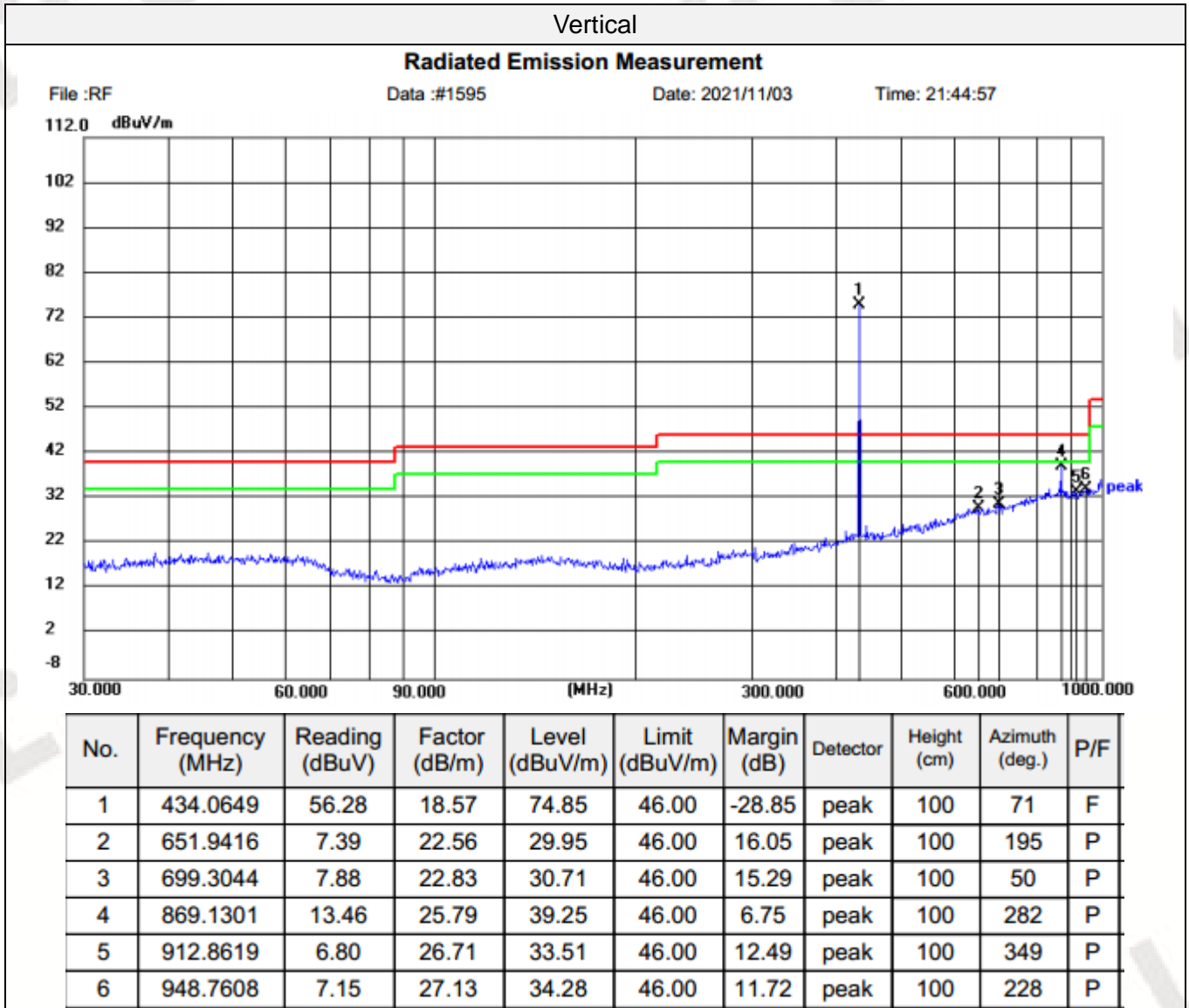
TEST RESULTS

For 30MHz-1GHz



Note: point 1 is the fundamental, Limit is 100.82 dB μ V/m, 4 is the second harmonic, Limit is 80.82 dB μ V/m

Fundamental and Harmonics Average Result						
Frequency (MHz)	Peak Level (dB μ V/m)	AV Factor (dB μ V/m)	Average Level (dB μ V/m)	Limit (dB μ V/m) (average)	Margin (dB μ V/m)	Conclusion
433.94	83.13	-6.56	76.57	80.82	-4.25	PASS
867.88	40.31	-6.56	33.75	60.82	-27.07	PASS



Note: point 1 is the fundamental, Limit is 100.82 dB μ V/m, 4 is the second harmonic, Limit is 80.82 dB μ V/m

Fundamental and Harmonics Average Result						
Frequency (MHz)	Peak Level (dB μ V/m)	AV Factor (dB μ V/m)	Average Level (dB μ V/m)	Limit (dB μ V/m) (average)	Margin (dB μ V/m)	Conclusion
433.94	74.85	-6.56	68.29	80.82	-12.53	PASS
867.88	39.25	-6.56	32.69	60.82	-28.13	PASS

For 1GHz to 5GHz

Peak Value:				
Frequency (MHz)	Reading Level(dBuV)	Limit Line (dBuV/m)	Margin (dBuV/m)	Polarization
1301.76	45.81	74	-28.19	Horizontal
1735.83	37.85	74	-36.15	Horizontal
2169.40	41.17	74	-32.83	Horizontal
1301.55	45.19	74	-28.81	Vertical
1735.74	36.07	74	-37.93	Vertical
2169.43	40.69	74	-33.31	Vertical

Average Value:						
Frequency (MHz)	Reading Level(dBuV)	Duty cycle factor	Average value (dBuV/m)	Limit Line (dBuV/m)	Margin (dBuV/m)	Polarization
1301.76	42.74	-6.56	36.18	54	-17.82	Horizontal
1735.83	38.54	-6.56	31.98	54	-22.02	Horizontal
2169.40	41.12	-6.56	34.56	54	-19.44	Horizontal
1301.55	40.53	-6.56	33.97	54	-20.03	Vertical
1735.74	38.07	-6.56	31.51	54	-22.49	Vertical
2169.43	39.76	-6.56	33.20	54	-20.80	Vertical

Note:

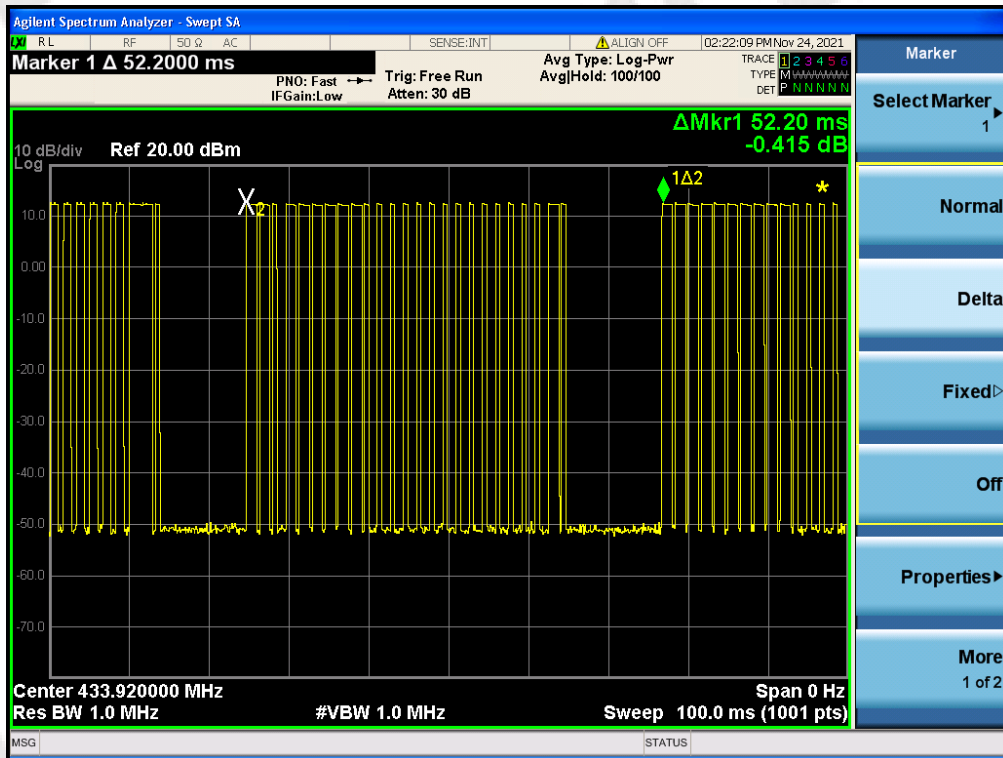
- All Readings are Peak Value
- Correct Factor= Antenna Factor +Cable Loss- Amplifier Gain
- Emission Level= Reading Level+Probe Factor +Cable Loss
- AV Level (dBuV/m)= PK Level (dBuV/m)+ AV Factor(dB)
- Margin = TrueValue – limit(if margin is minus means under limit)
- a transmit cycle 52.2ms period found 1.4ms burst 10pcs, 0.7ms burst 15pcs, the Duty Cycle can calculate as below:

$$\text{Duty Cycle} = (1.4 \times 10 + 0.7 \times 15) / 52.2 = 0.47$$

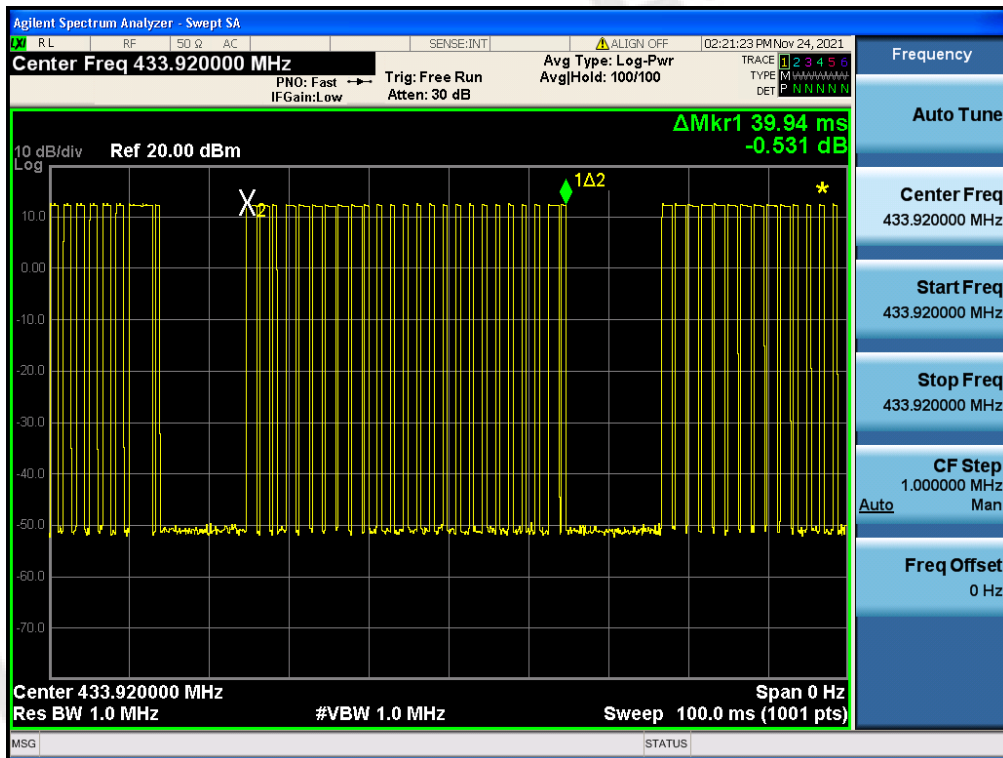
$$\text{AV Factor} = 20 \times \log(\text{Duty Cycle}) = 20 \times \log(0.47) = -6.56$$

(The plot of Duty Cycle See the follow page)

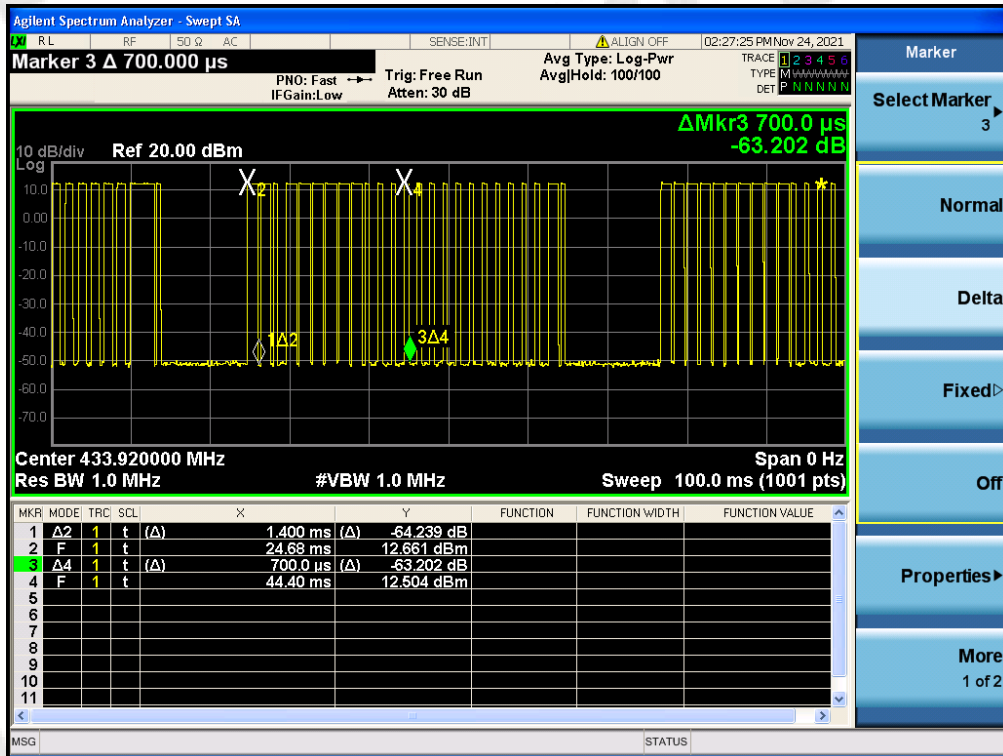
- All the x/y/z orientation has been investigated, and only worst case is presented in this report.



(Transmit cycle 52.2ms)



(Total Bursts in a transmit cycle 25 pcs)



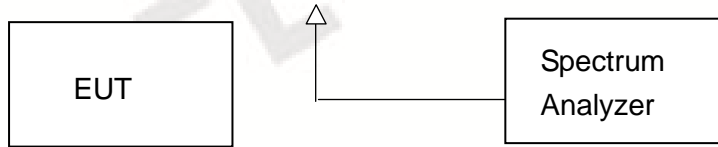
(1.4ms burst 10pcs and 0.7ms burst 15pcs)

3.3. 20dB Bandwidth

Limit

According to 47 CFR 15.231(c) The bandwidth of the emission shall be no wider than 0.25% of the centre frequency for devices operating above 70MHz and below 900MHz. Bandwidth is determined at the points 20dB down from the modulated carrier.

Test Configuration



Test Procedure

The 20dB bandwidth and 99% bandwidth is measured with a spectrum analyzer connected via a receive antenna placed near the EUT while the EUT is operating in transmission mode.

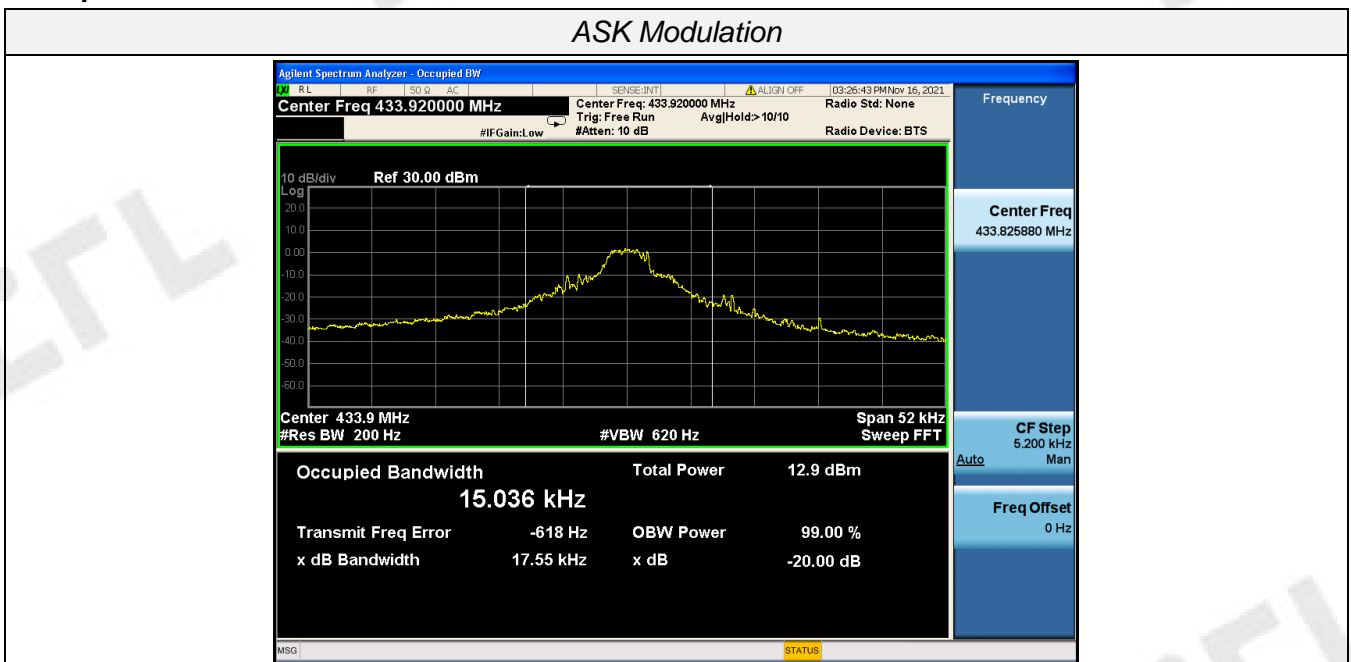
The 20dB bandwidth is defined as the total spectrum the power of which is higher than peak power minus 20dB.

The occupied bandwidth (OBW), that is the frequency bandwidth such that, below its lower and above its upper frequency limits, the mean powers radiated are each equal to 0.5 percent of the total mean power radiated by a given emission.

Test Results

Modulation	Channel Frequency (MHz)	99% OBW (KHz)	20dB bandwidth (KHz)	Limit (KHz)	Result
ASK	433.92	15.036	17.55	$0.25\% * 433.92 = 1084.8$	Pass

Test plot as follows:

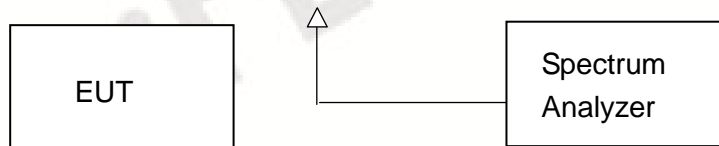


3.4. Deactivation Time

Limit

According to FCC §15.231(a)(2), A transmitter activated automatically shall cease transmission within 5 seconds after activation.

Test Configuration



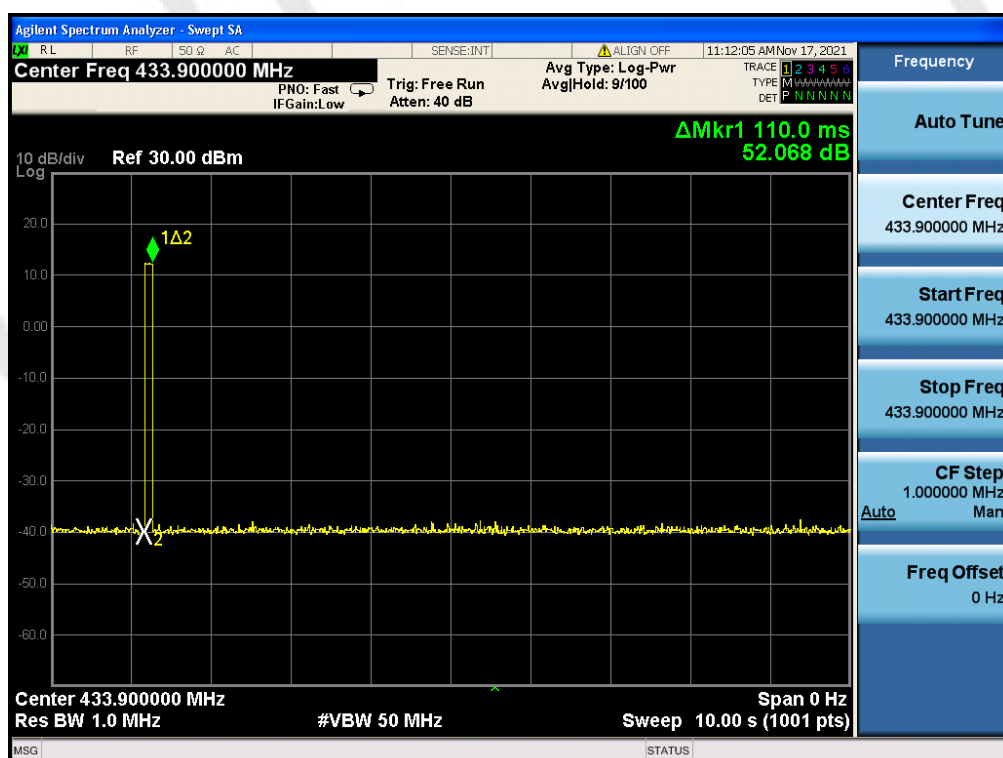
Test Procedure

1. The EUT was placed on a wooded table which is 0.8m height and close to receiver antenna of spectrum analyzer.
2. The spectrum analyzer resolution bandwidth was set to 1 MHz and video bandwidth was set to 1 MHz to encompass all significant spectral components during the test. The spectrum analyzer was operated in linear scale and zero span mode after tuning to the transmitter carrier frequency.

TEST RESULTS

Note: The transmitter was automatically activated, and the carrier frequency 433.92MHz:

Frequency (MHz)	One transmission time (S)	Limit(S)	Result
433.92	0.11	5	Pass



3.5. Antenna Requirement

Standard Applicable

According to FCC Part 15C 15.203

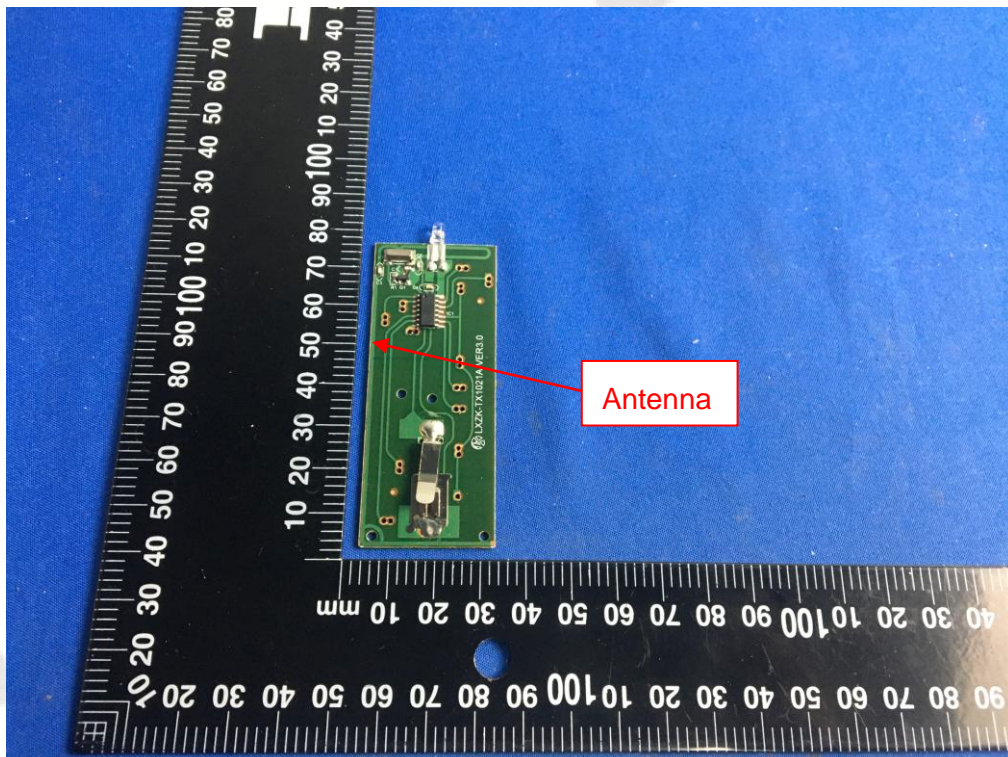
- a) An intentional radiator shall be de-signed to ensure that no antenna other than that furnished by the responsible party shall be used with the device.
- b) The manufacturer may design the unit so that a broken antenna can be replaced by the user, but the use of a standard antenna jack or electrical connector is prohibited.

Refer to statement below for compliance.

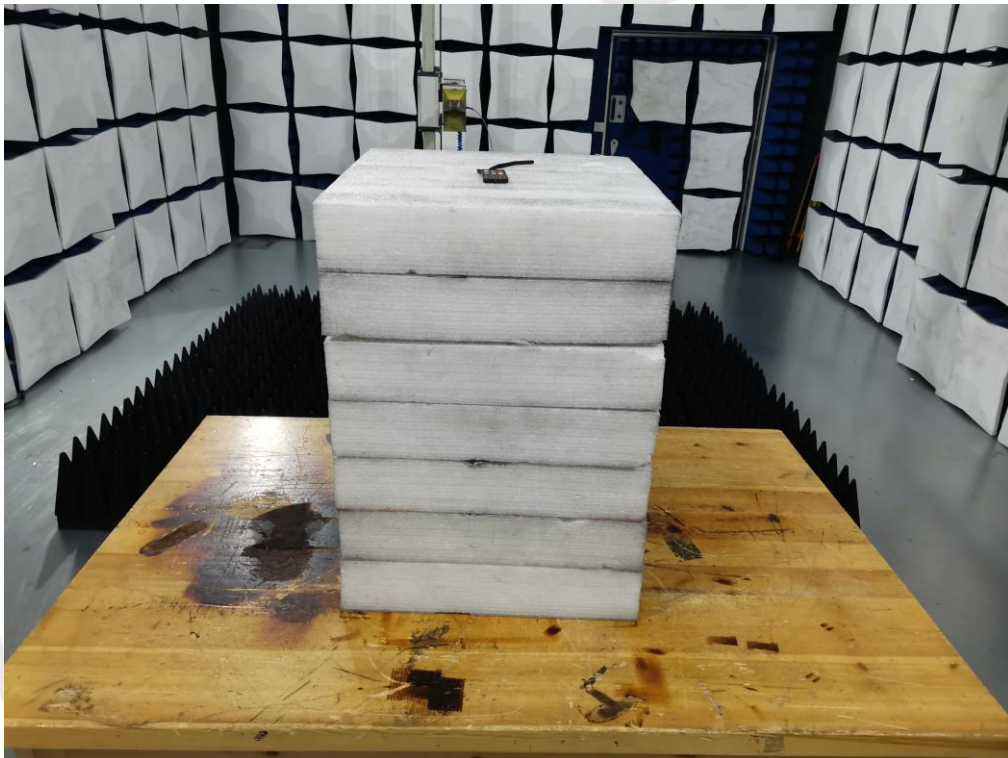
The manufacturer may design the unit so that the user can replace a broken antenna, but the use of a standard antenna jack or electrical connector is prohibited. Further, this requirement does not apply to intentional radiators that must be professionally installed.

Antenna Connected Construction

The antenna used in this product is an PCB Antenna, The directional gains of antenna used for transmitting is 0dBi.

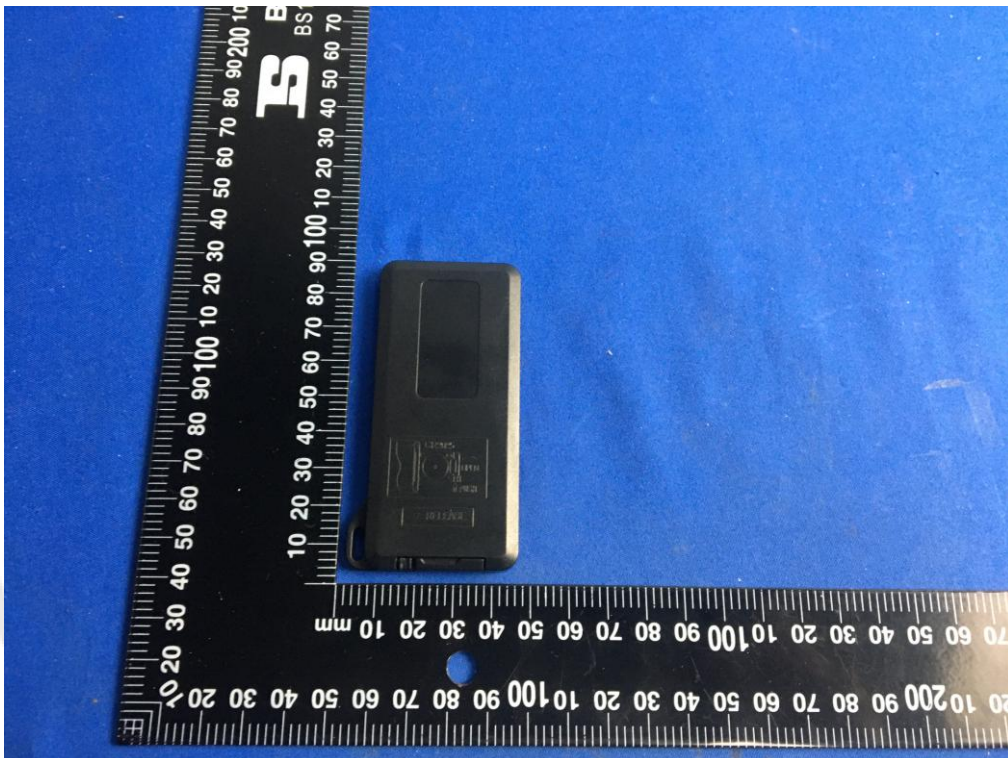
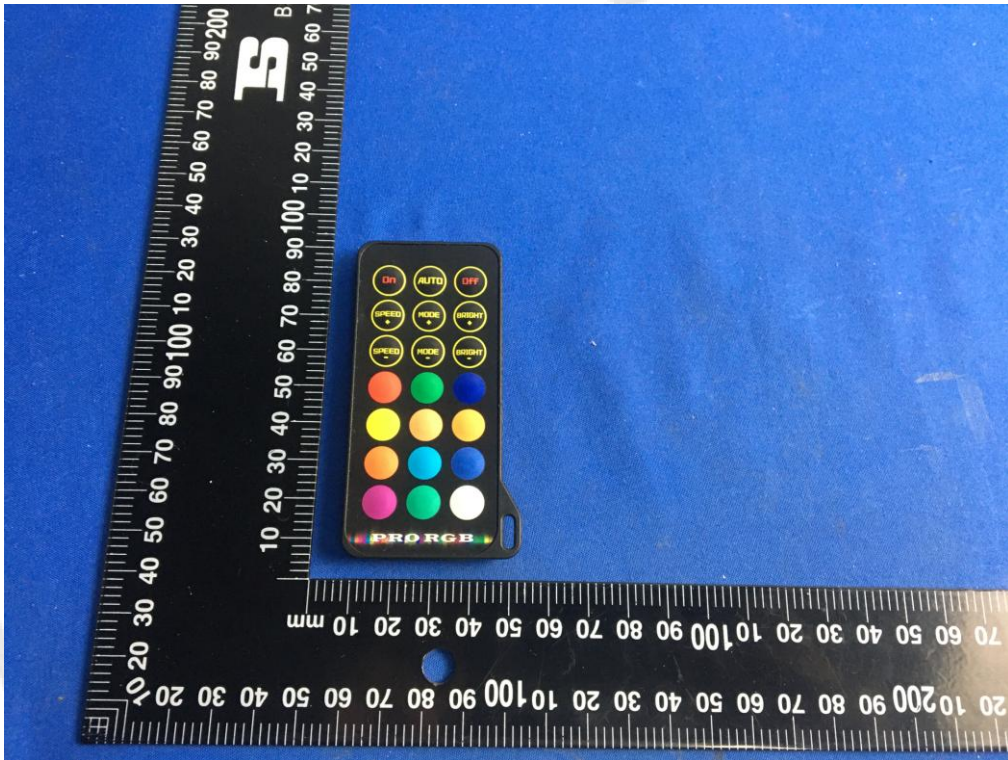


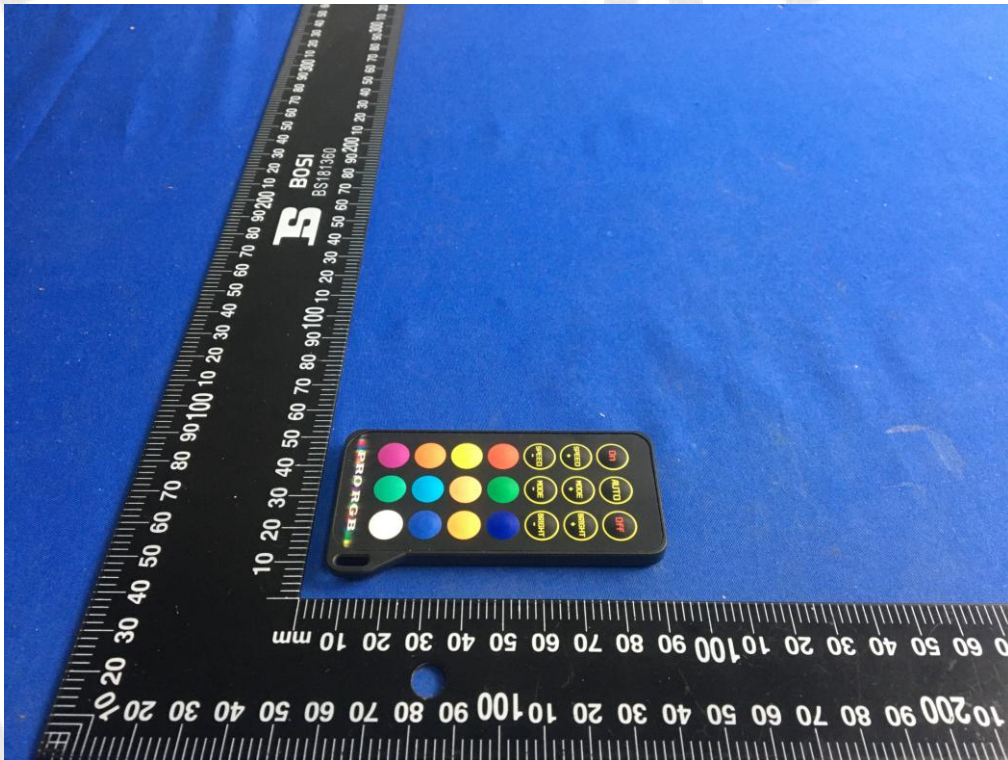
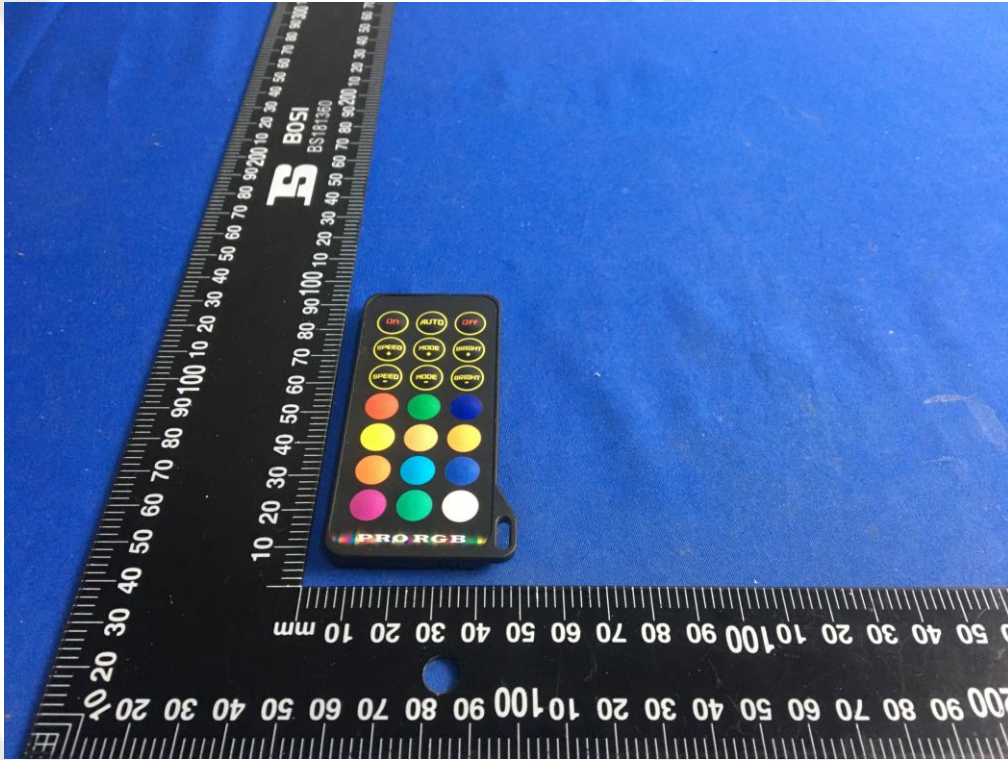
4. Test Setup Photos of the EUT

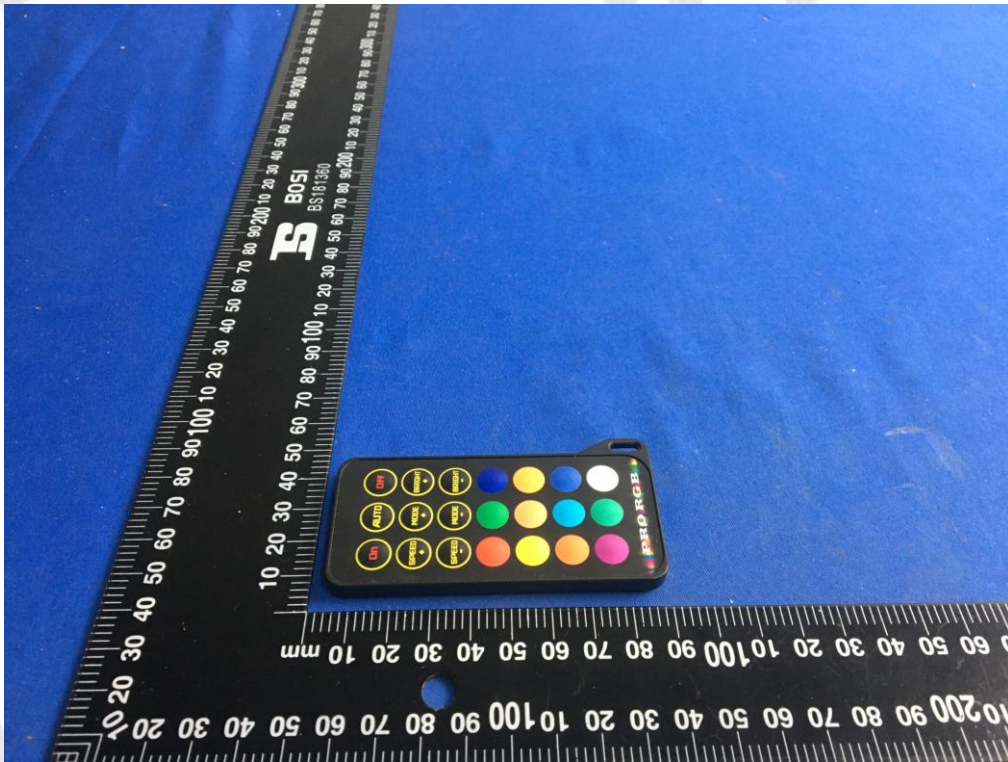
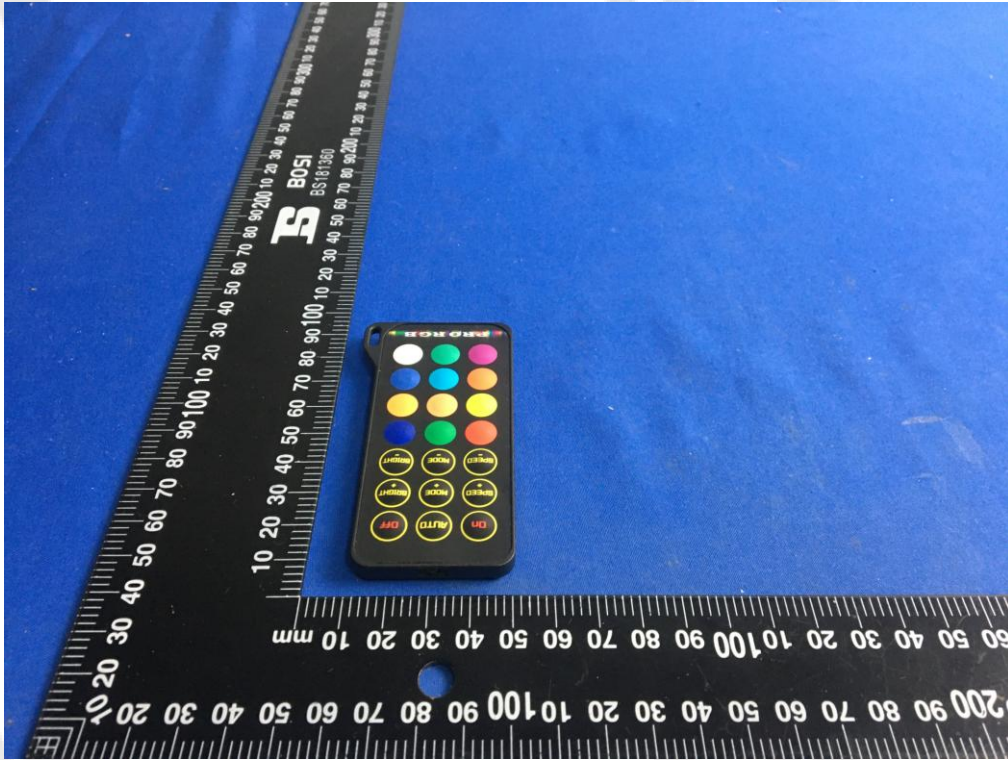


5. External and Internal Photos of the EUT

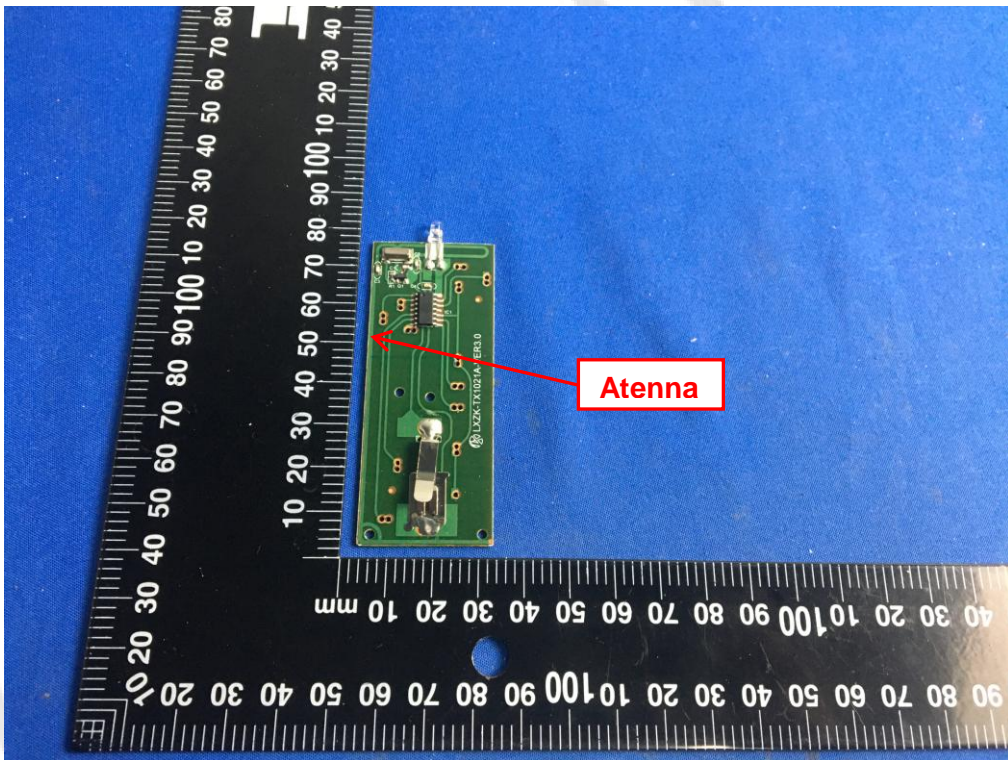
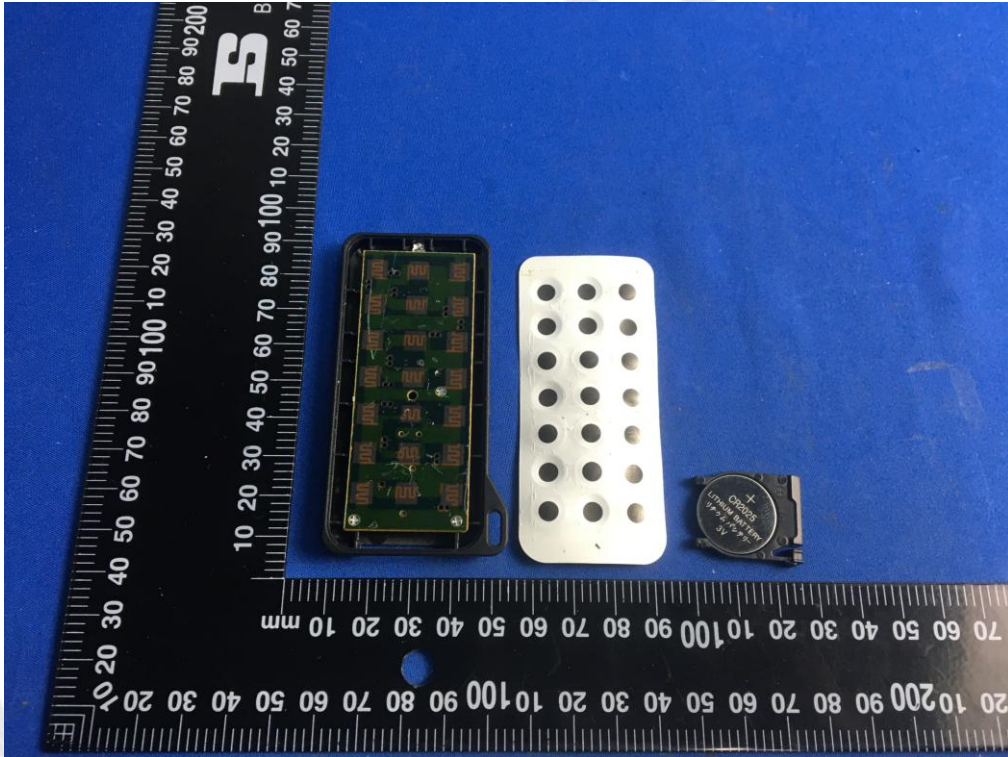
External Photos of EUT

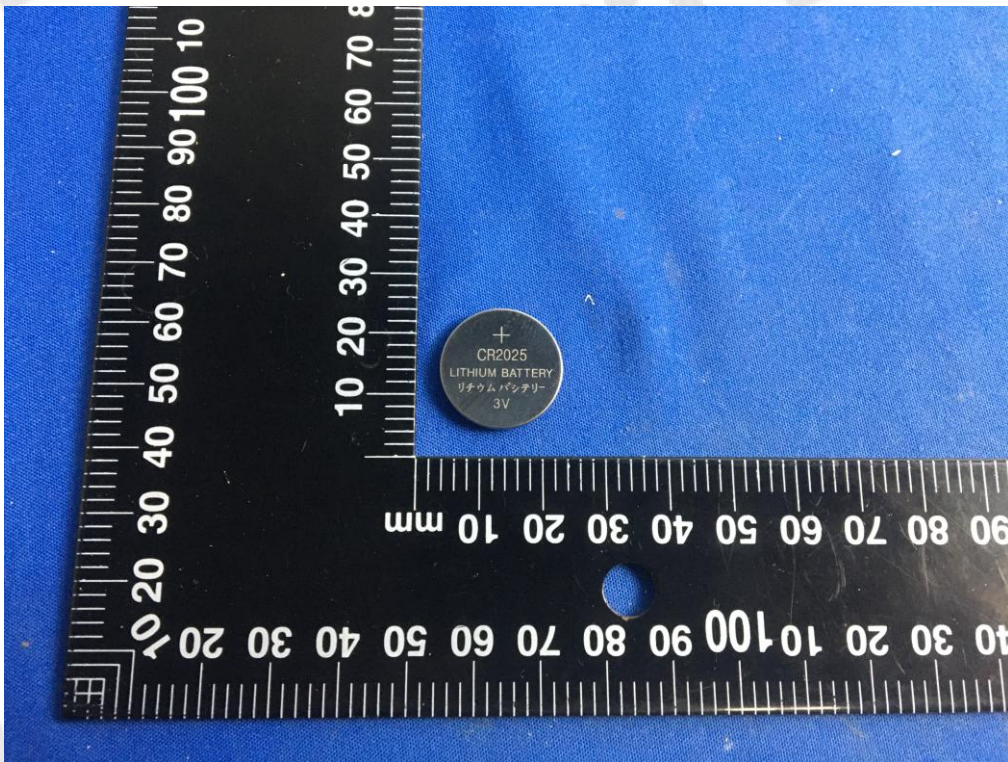
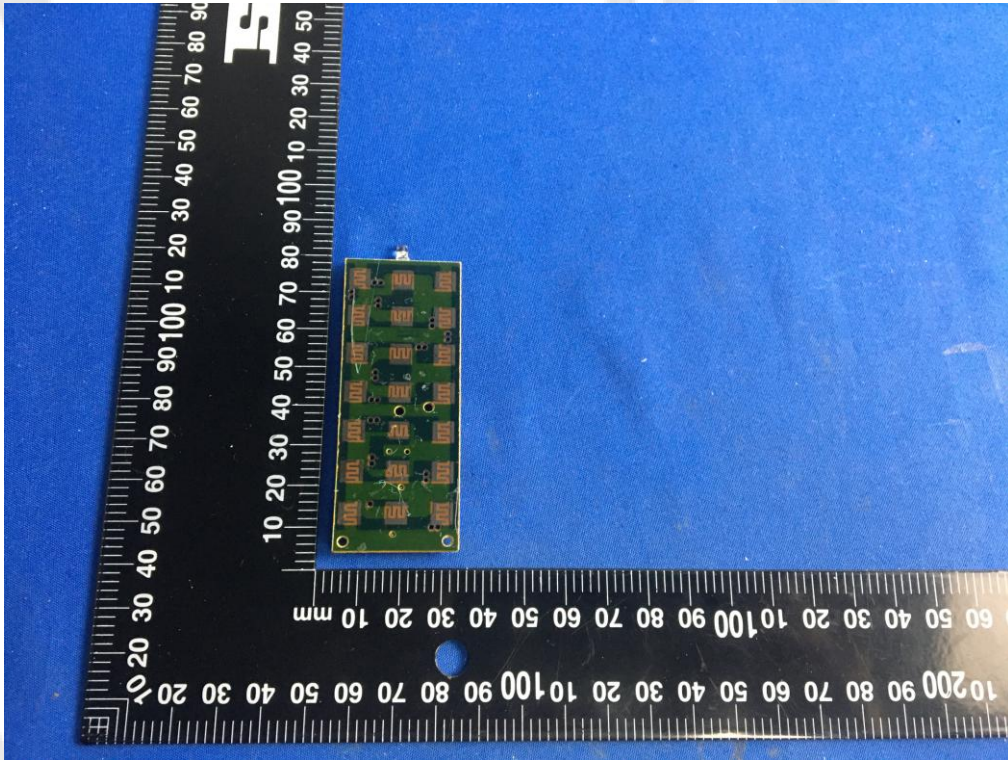






Internal Photos of EUT





***** End of Report *****