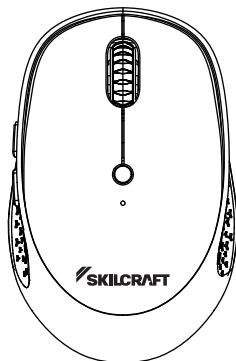
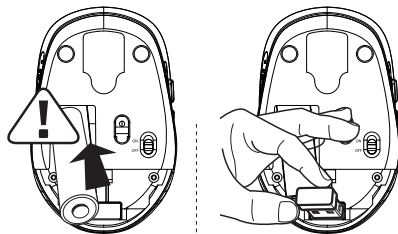




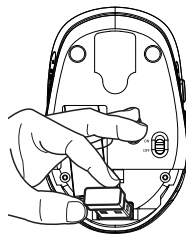
Wireless Mouse User Manual



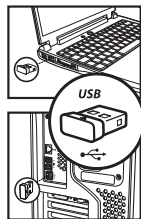
Model: NMA001M
FCC ID: 2AHKSNMA001M



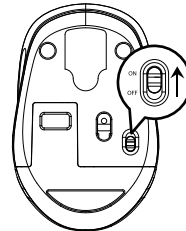
1. Open the battery cover.
Install the battery.



2. Remove the USB receiver.



3. Insert the USB receiver into
the USB port of computer.



4. Slide the power switch to "ON"

Basic parameter

Number of keys: 6 keys
Mouse button life: 5 million cycles
DPI: 800-1200-1600DPI
Mouse size: 99x64x38mm
Net weight: 80g (including USB receiver)

Transmission Parameters
Working voltage: 1.5V
Working distance: 10m
Working current: 17mA±0.5mA
Polling rate: 250Hz

System Requirement
Windows XP, Win7/8/10/11, Mac OS systems

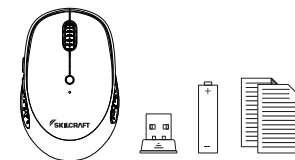
FCC Requirement

Any changes or modifications not expressly approved by the party responsible for compliance could void the user's authority to operate the equipment. This device complies with Part 15 of the FCC Rules. Operation is subject to the following two conditions: (1) this device may not cause harmful interference, and (2) this device must accept any interference received, including interference that may cause undesired operation. Note: This equipment has been tested and found to comply with the limits for a Class B digital device, pursuant to Part 15 of the FCC Rules. These limits are designed to provide reasonable protection against harmful interference in a residential installation. This equipment generates, uses, and can radiate radio frequency energy, and if not installed and used in accordance with the instructions, may cause harmful interference to radio communications. However, there is no guarantee that interference will not occur in a particular installation. If this equipment does cause harmful interference to radio or television reception, which can be determined by turning the equipment off and on, the user is encouraged to try to correct the interference by one or more of the following measures:

– Reorient or relocate the receiving antenna. – Increase the separation between the equipment and receiver. – Connect the equipment into an outlet on a circuit different from that to which the receiver is connected. – Consult the dealer or an experienced radio/TV technician for help.

Package Contents

- ▶ Wireless Mouse
- ▶ Nano Receiver
- ▶ AA alkaline battery
- ▶ Quick start guide



Wireless Mouse
Product name:NMA001 Ambidextrous Mouse
Model:NMA001M
FCC ID:2AHKSNMA001M

Nano Receiver
Product name:NMA001 Ambidextrous Mouse Receiver
Model:NMA001R
FCC ID:2AHKSNMA001R

06.11.01.

E580美国Novaport说明书 尺寸60x90mm展开240x90mm 材质100克书写纸 单面黑色印刷 风琴折