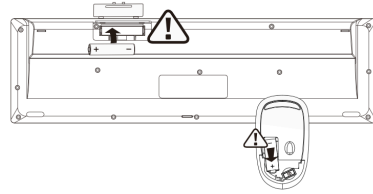


**Package contents:**

- Wireless keyboard
- Wireless mouse
- Nano receiver
- Quick start guide

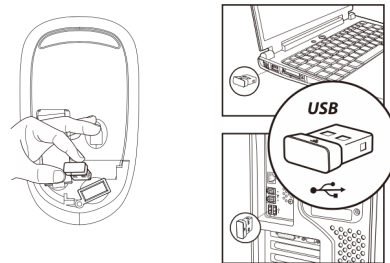
**System requirements:**

- Windows 2000/ME/XP (x64)/Vista/7/8/10
- Mac OS X(10.4 or later)
- USB-A port



Open the battery covers and insert a AAA battery in the keyboard and a AA battery in the mouse.

Remove the receiver and insert into your computer.



**FCC Declaration of Compliance Statement**

changes or modifications not expressly approved by the party responsible for compliance could void the user's authority to operate the equipment.

This device complies with Part 15 of the FCC Rules. Operation is subject to two conditions: (1) This device may not cause harmful interference, and, (2) this device must accept any interference received, including interference that may cause undesired operation. Note: This equipment has been tested and found to comply with the limits for a Class B digital device, pursuant to Part 15 of the FCC Rules. These limits are designed to provide reasonable protection against harmful interference in a residential installation. This equipment generates, uses, and can radiate radio frequency energy and, if not installed and used in accordance with the instructions, may cause harmful interference to radio communications. However, there is no guarantee that interference will not occur in a particular installation. If this equipment does cause harmful interference to radio or television reception, which can be determined by turning the equipment off and on, the user is encouraged to try to correct the interference by one or more of the following measures.

- Reorient or relocate the receiving antenna.
- Increase the separation between the equipment and receiver.
- Connect the equipment into an outlet on a circuit different from that to which the receiver is connected.
- Consult the dealer or an experienced radio/TV technician for help.

**Product features**

- **2.4GHz wireless technology** provides reliable transmission up to 30 meters.
- **Ultra smooth chocolate keycaps** increase finger contact area and provide a more comfortable feel.
- **Silent micro switch design** reduces operation noise and increases service life.
- **Power saving chip** reduces energy consumption and increases battery life.

**Product specifications:**

**Mouse**

- Data Transmission: 1Mbps
- Frequency: 2405 MHz-2476MHz
- Channel: 16
- Distance: 30m
- Voltage: 1.5V
- Current: 11mA
- Resolution: 1500DPI

**Keyboard**

- Data Transmission: 1Mbps
- Frequency: 2405 MHz-2476MHz
- Channel: 16
- Distance: 30m
- Voltage: 1.5V

# SKILCRAFT

Quick Start Guide

