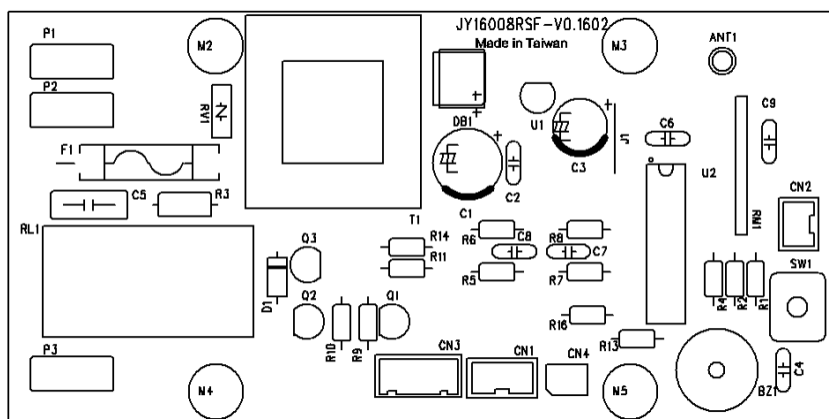


## Dust Cyclone- Remote control panel function



Control panel wire diagram (Refer to attachment 1)

Switch

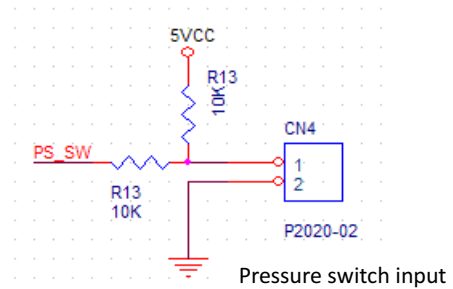
1. Switch on the power source, the panel will beep for 0.25seconds.
2. Press the SW1 button until you hear a beep that lasts for 0.15 seconds, this beep will go off twice. Thereafter, press the D button on the hand held remote controller to send a code to the panel, which will read the code in 5 seconds completing the CODE SAVE CPU EEPROM, 0.15 second beep, stopping for 0.15 seconds continuously for three times will mean that you have completed the setup. If this is not done within the 5 second time frame, you will have to repeat the code link set up again. Repeating this will not clear the first code setup.
3. Press the A button on the hand held remote controller, the control panel will activate the RELAY (RL1) ON + LED OUT ON and beep for 0.15 seconds.
4. Press the B button on the hand held remote controller, the control panel will activate the RELAY (RL1) OFF + LED OUT OFF and beep for 0.15 seconds.
5. In RELAY OFF mode, press the green button on the switch (CN3) to activate RELAY (RL1) ON + LED OUT ON and will beep for 0.15 seconds.
6. In RELAY ON mode, press the red button on the switch (CN3) to activate RELAY (RL1) OFF + LED OUT OFF and will beep for 0.15 seconds.



## JY16008RSF- Remote control panel function

Pressure switch input:

1. When the PS\_SW is 0, the forced output is RELAY (RL1) OFF. This will affect the other functions.
2. When the PS\_SW is 1, RELAY (RL1) will function normally.
3. Refer to the diagram on the right:



Hand held remote controller function:

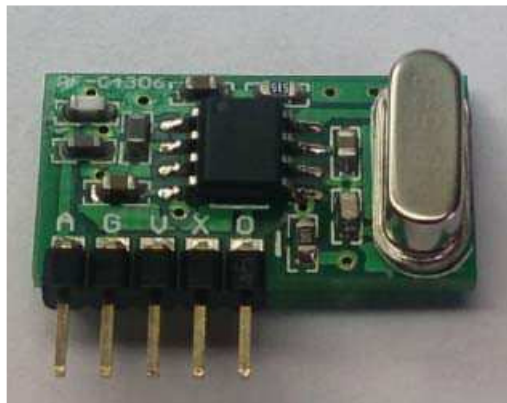
1. A is ON, B is OFF, C(NC), D is code output
2. First pressing D will send a code signal, and the LED will flash, simultaneously press the set button on the control panel to save the code.



3. Pressing A, the LED will flash and signal ON
4. Pressing B, the LED will flash and signal OFF
5. Output frequency is 433MHZ

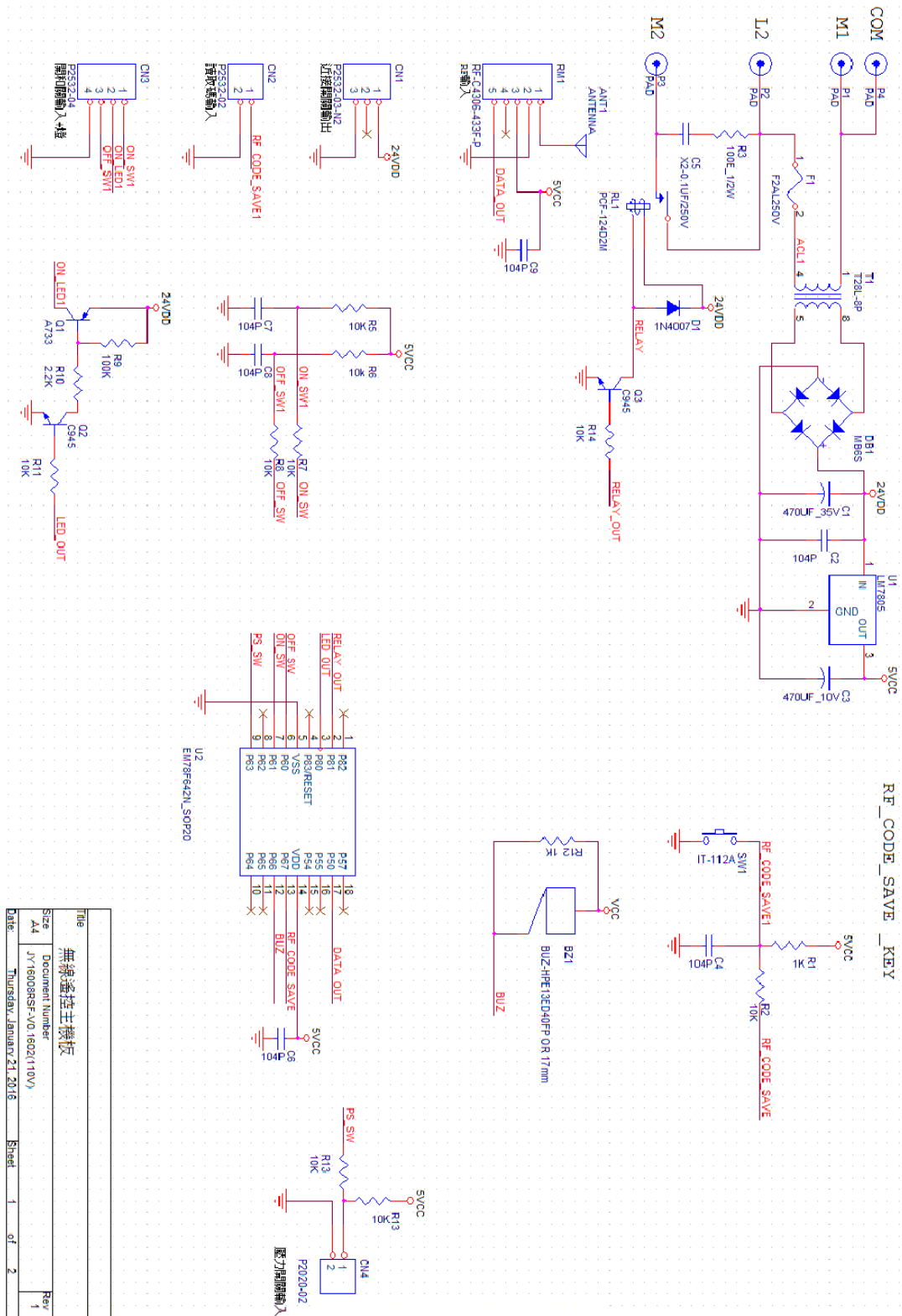


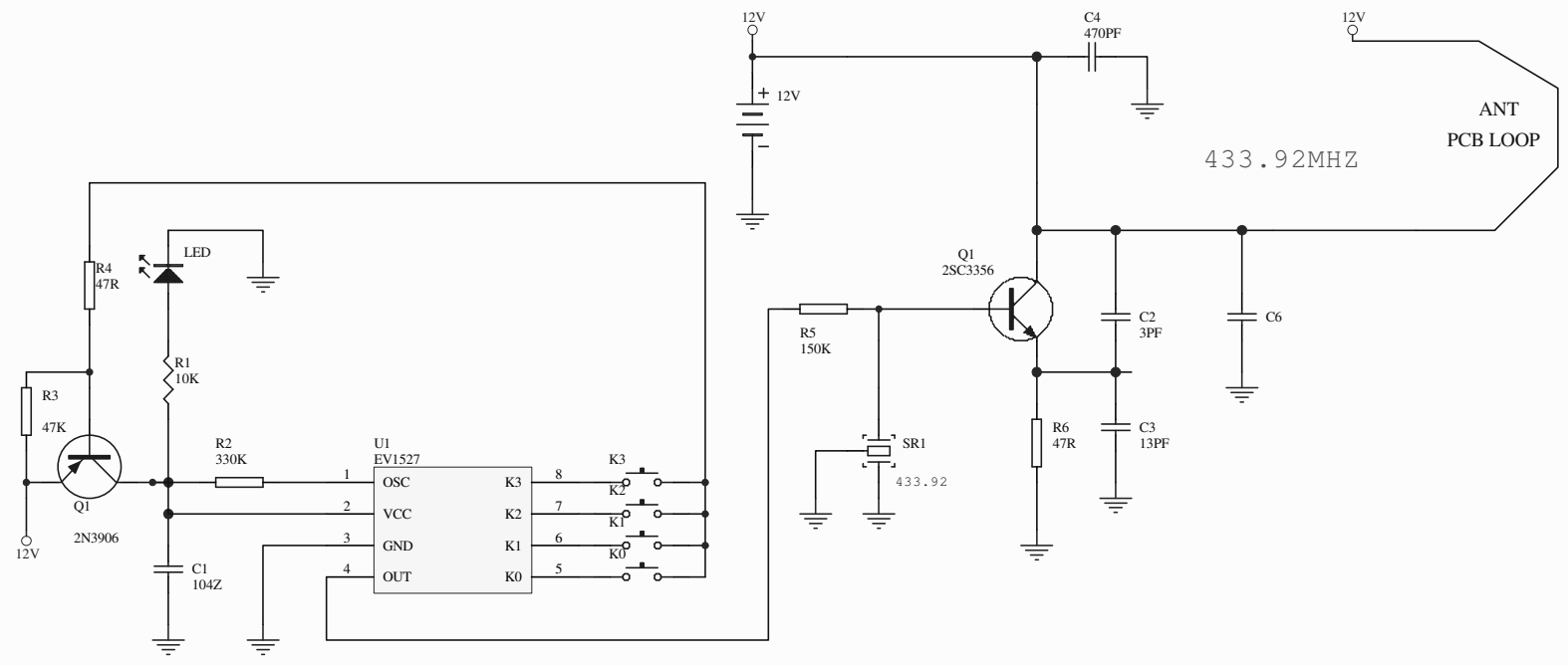
Control panel receiver : DATASHEET per attachment (2)



# JY16008RSF- Remote control panel function

## ATTACHMENT(1)





Title			TX-4KEY-434		
Size	Number		Revision		
A4					
Date:	21-Jan-2016		Sheet of		
File:	D:\PCB\通文遙控馬達組\TX-4KEY-1527		Drawn By:		

## JY16008RSF- Remote control panel function

### ATTACHMENT(2)

### DATA SHEET

Receiver Module :RF-C4306-433F-P (ROHS)

\* Frequency Range :433.92MHz

\* Modulate Mode :ASK/OOK

\* Data Rate :4KBIT/S

\* Sensitivity :-112dB

\* Low Power Supply Voltage :2.4~5.5V

\* EDS=+-4KV(Contact)

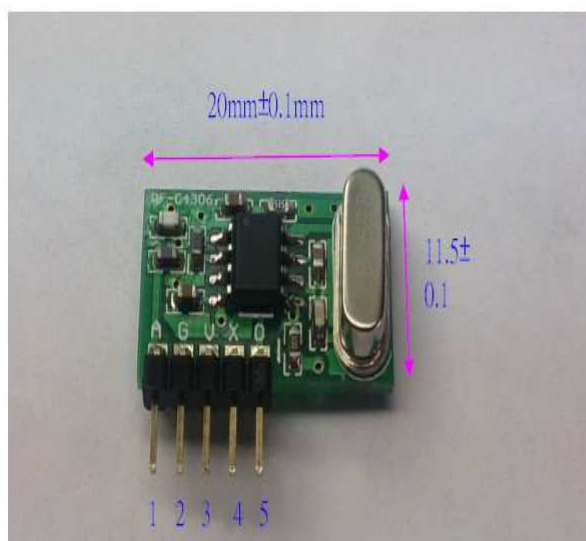


#### DC Characteristics

Symbol	Parameter	Conditions	Min.	Typ.	Max.	Unit
Vcc	Operating Supply Voltage		2.4	5	5.5	V
I	Current Consumption		4.2	4.6	5	mA
	Operating Temperature range		-30	25	70	°C

#### Electrical Characteristics :

Characteristics	Sym	Min.	Typ.	Max.	Unit
Operating Radio Frequency	FC		433.92		MHz
Sensitivity	Pref.	-110	-112		dBm
IF Bandwidth			380		KHZ
Baseboard Data Rate			2	10	KB/S



PIN1:Ant about(16.3cm)

PIN2:GND

PIN3:VCC(2.4~5.5V)

PIN4:NC

PIN5:DATA OUT

PIN=5P/2.0 排針

## **Federal Communication Commission Interference Statement**

This equipment has been tested and found to comply with the limits for a Class B digital device, pursuant to Part 15 of the FCC Rules. These limits are designed to provide reasonable protection against harmful interference in a residential installation. This equipment generates, uses and can radiate radio frequency energy and, if not installed and used in accordance with the instructions, may cause harmful interference to radio communications. However, there is no guarantee that interference will not occur in a particular installation. If this equipment does cause harmful interference to radio or television reception, which can be determined by turning the equipment off and on, the user is encouraged to try to correct the interference by one of the following measures:

- Reorient or relocate the receiving antenna.
- Increase the separation between the equipment and receiver.
- Connect the equipment into an outlet on a circuit different from that to which the receiver is connected.
- Consult the dealer or an experienced radio/TV technician for help.

FCC Caution: Any changes or modifications not expressly approved by the party responsible for compliance could void the user's authority to operate this equipment.

This device complies with Part 15 of the FCC Rules. Operation is subject to the following two conditions: (1) This device may not cause harmful interference, and (2) this device must accept any interference received, including interference that may cause undesired operation.

**Industry Canada statement:**

*This device complies with Industry Canada's licence-exempt RSSs. Operation is subject to the following two conditions:*

- (1) This device may not cause interference; and*
- (2) This device must accept any interference, including interference that may cause undesired operation of the device.*

*Le présent appareil est conforme aux CNR d'Industrie Canada applicables aux appareils radio exempts de licence. L'exploitation est autorisée aux deux conditions suivantes:*

- 1) l'appareil ne doit pas produire de brouillage;*
- 2) l'utilisateur de l'appareil doit accepter tout brouillage radioélectrique subi, même si le brouillage est susceptible d'en compromettre le fonctionnement.*