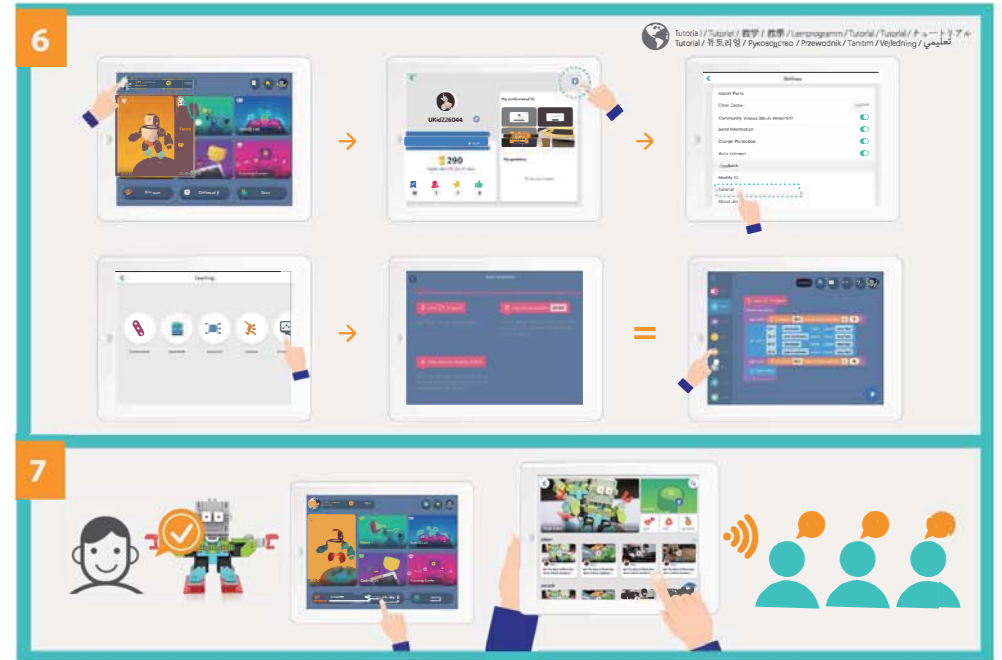

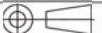


front



rear

 <b>UBTECH</b> Dream With Robots		PART NAME		
		Jimu Robot-		
Scale	1:1	Date	Material	300G双铜
Design By		2018-04-27	Part No.	1.4.1.04.0024
Check By			Version	V1.0
Approve By		2018-04-27	Tolerance	±1mm
Unit	mm	DO NOT SCALE THIS DRAWING		

## RECHARGEABLE BATTERY INFORMATION

- Do not recharge the battery pack if it is hot. Allow it to cool before recharging.
- Do not attempt to use or charge the battery pack if it shows signs of leakage or corrosion.
- Do not crush or disassemble the battery pack.
- Exercise caution in handling a hot battery pack.
- If battery pack and/or charger are wet, thoroughly dry before charging.
- Do not recharge non-rechargeable batteries.
- Do not dispose of the battery pack in a fire.

## NOTE TO ADULTS

- Rechargeable battery pack should only be charged by an adult.
- Periodically examine this product for damage to the plug, housing, or other parts that may result in the risk of fire, electric shock or injury. If the product is damaged, do not use it.
- The battery charger is not a toy.
- This battery charger is intended to be correctly oriented in a vertical or floor mount position.
- Periodically examine this battery charger for damage to the cord, housing or other parts that may result in the risk of fire, electric shock or injury. If the battery charger is damaged, do not use it.

## BATTERY DISPOSAL

Unlike NiCd (Nickel-Cadmium) rechargeable batteries, your SUPER SPEED (Li-ion) battery pack requires no special procedures or precautions for disposal. However, as with all products, you should dispose of your battery pack in an environmentally responsible and considerate manner.

## BATTERY SAFETY INFORMATION

In exceptional circumstances batteries may leak fluids that can cause a chemical burn injury or ruin your product. To avoid battery leakage:

- Non-rechargeable batteries are not to be recharged.
- Rechargeable batteries are to be removed from the product before being charged.
- Rechargeable batteries are only to be charged under adult supervision.
- Do not mix alkaline, standard (carbon-zinc), or rechargeable batteries.
- Do not mix old and new batteries.
- Only batteries of the same or equivalent type as recommended are to be used.
- Batteries are to be inserted with the correct polarity.
- Exhausted batteries are to be removed from the product.
- The supply terminals are not to be short-circuited.
- Dispose of battery(ies) safely.
- Do not dispose of this product in a fire. The batteries inside may explode or leak.



Protect the environment by not disposing of this product or any batteries with household waste. This symbol indicates that this product shall not be treated as household waste. Check your local authority for recycling advice and facilities.

## FOR PRODUCT SOLD IN USA

### THIS DEVICE COMPLIES WITH PART 15 OF THE FCC RULES.

Operation is subject to the following two conditions: (1) This device may not cause harmful interference, and (2) this device must accept any interference received, including interference that may cause undesired operation.

- This equipment has been tested and found to comply with the limits for a Class B digital device, pursuant to part 15 of the FCC rules. These limits are designed to provide reasonable protection against harmful interference in a residential installation. This equipment generates, uses and can radiate radio frequency energy and, if not installed and used in accordance with the instructions, may cause harmful interference to radio communications. However, there is no guarantee that interference will not occur in a particular installation. If this equipment does cause harmful interference to radio or television reception, which can be determined by turning the equipment off and on, the user is encouraged to try to correct the interference by one or more of the following measures:
  - Reorient or relocate the receiving antenna.
  - Increase the separation between the equipment and receiver.
  - Connect the equipment into an outlet on a circuit different from that to which the receiver is connected.
  - Consult the dealer or an experienced radio/TV technician for help.

This equipment should be installed and operated with minimum distance 20 cm between the radiator and your body.

**Note:** Changes or modifications not expressly approved by the manufacturer responsible for compliance could void the user's authority to operate the equipment.

Keep these instructions for future reference as they contain important information.

**IMPORTANT:** Please read all instructions before operating your product.

FCC ID: 2AHJX-JRA0101



UBTECH ROBOTICS CORP

Product Description: Jimu Robot

Model #:JRA0101

UBTECH ROBOTIC CORP BAOAN BRANCH

Huilongda Industrial Park

Shilongzai, Shiyuan Town, Baoan District

Shenzhen City, China [www.ubtrobot.com](http://www.ubtrobot.com)

Tel: **800-276-6137**

Customer Service: [jimu.service@ubtrobot.com](mailto:jimu.service@ubtrobot.com)

Made in China



FCC ID:2AHJX-JRA0101