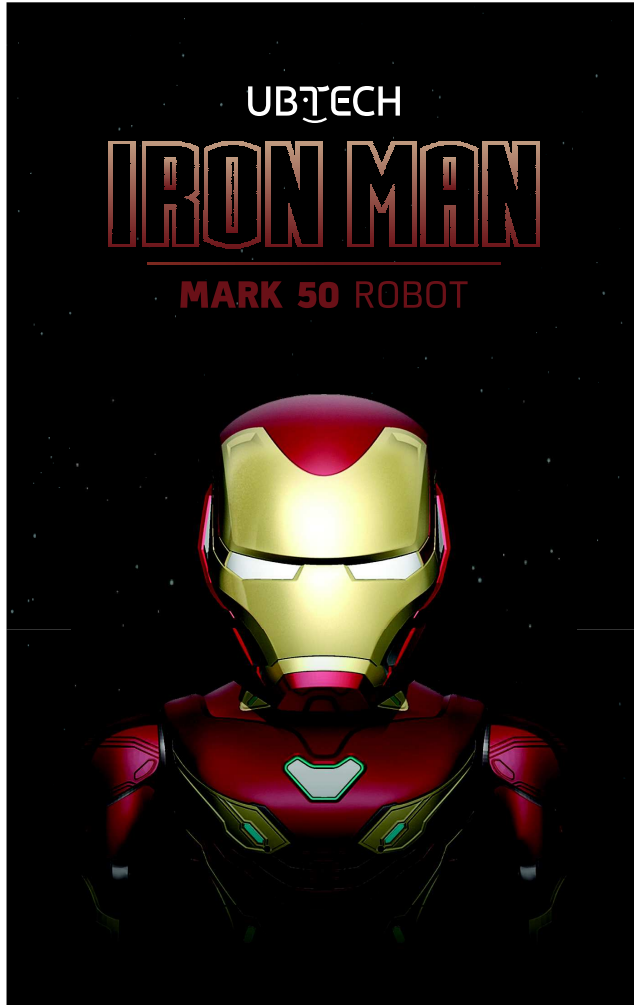


UBTECH

IRON MAN

MARK 50 ROBOT



1 Product Components

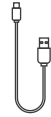
Product: IRON MAN MK50 ROBOT BY UBTECH
Project No.:IM050



Robot



AR Pad



USB Cable



Legal Guide



Quick Start Guide

2 Warning & Prohibition

⚠ Not suitable for children under 3 years-old, suitable for users above 14 years-old.

Instruction for Lithium Battery:

- The battery should be kept away from the inflammable.
- Please do not expose the battery to direct sunlight.
- The battery risks of explosion, overheating, or flaming. Do not disassemble, modify, heat, or short circuit the battery. Please do not throw the battery into fire or expose it under high temperature environment.
- Please do not break the battery and keep the charging end away from water.
- Please carefully read the user manual and charge the battery according to the correct instruction.
- In case of leakage or explosion, please extinguish the fire with sand or chemical extinguisher.
- The battery should be properly reclaimed or disposed.
- The battery should be recycled or dealt with in accordance with the respective local guidelines.

3 Downloading the APP & Installing the Software

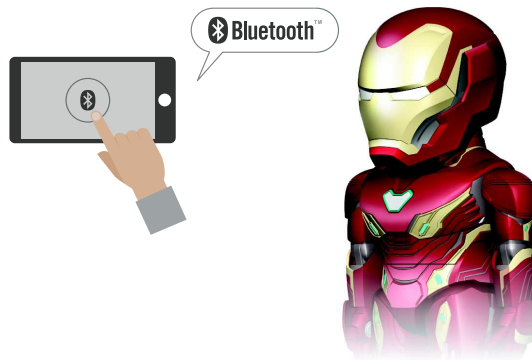
3.1 Downloading the APP



3.2 Turn on the switch on the back neck of the robot

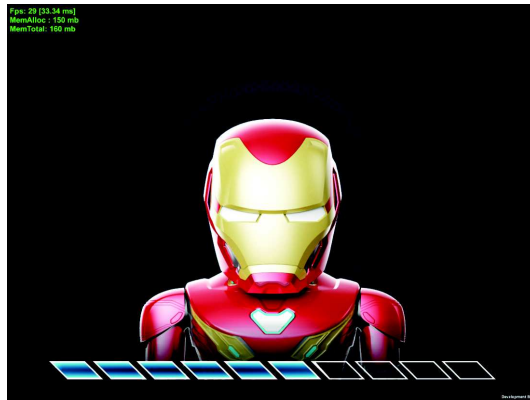


3.3 Turn on the Bluetooth



4 Connect and Start Up the APP

4.1 Open the APP, waiting for the starting interface



4.2 Select a language and accept the terms of use



4 Connect and Start Up the APP

4.3 Select whether or not using Bluetooth (When not connect to the Bluetooth, the device cannot support gaming, but still can go on to the main interface)



4.4 Input APP code, confirm the code and input the User mail (The process can be neglected by pressing the SKIP button at the top right-hand corner)

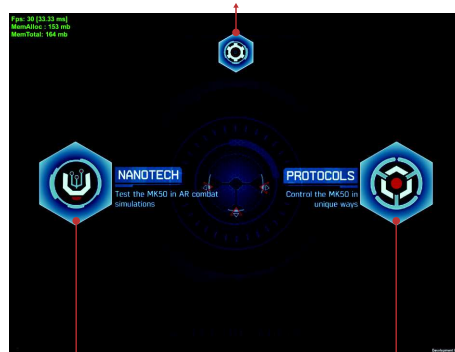


5 APP Function

5 Main Interface



Setting



5.1 Nanotech



5.2 Protocols

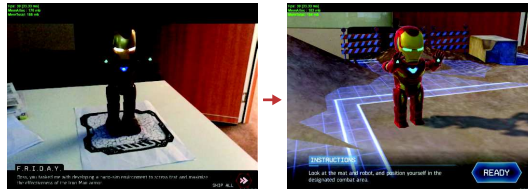
5 APP Function

5.1 Nanotech / AR Game Guidance

5.1.1 Enter AR Gaming, put the robot at the right place of the map (The location for the robot is the double feet vacancy on the map)



5.1.2 Direct the camera towards the map and the robot, while the APP keeps detecting



5 APP Function

5.1.3 Adjust the angle of the device so that it coordinates with the angle of the 3D robot, making it easier for attacking during the game



The enemy target is fixed after the device center targets the enemy for 2 seconds. Then press the attack button at the bottom right-hand corner to attack the enemy.

Click the attack button: fire laser cannon at the enemy.

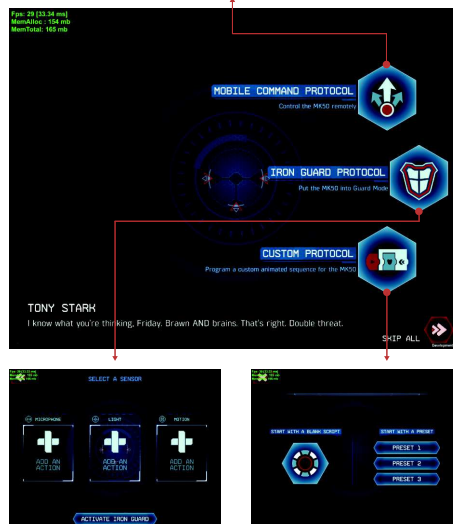
Continually press the attack button: fire laser ray at the enemy until the enemy is destroyed.

5 APP Function

5.2 Protocols



5.2.1 Mobile Command Protocol

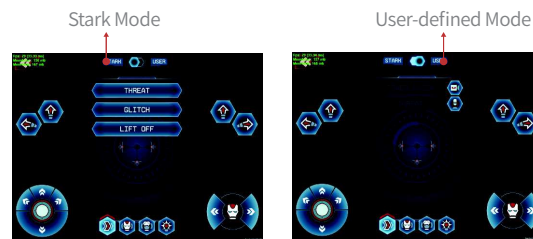


5.2.2 Iron Guard Protocol Custom Protocol

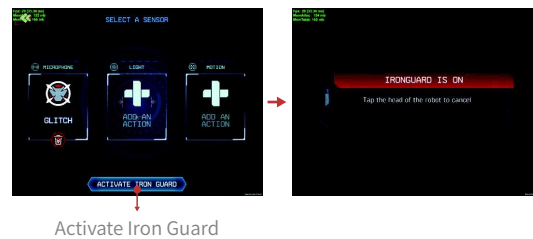


5 APP Function

5.2.1 Stark Mode and User-defined Mode



5.2.2 Defending Mode (Confirm activation to enter the defending mode and press the robot head with the palm to withdraw from the defending mode)



Activate Iron Guard

6 Copyright Information

The copyright of ©2018 is held by UBTECH Robotics.

The logos and icons of UBTECH and UBTECH Technology belong to UBTECH Robotics. For more information on the copyrighter of all other logos and corporate names, please login our website: www.ubtrobot.com.

©2018 MARVEL is authorized by Marvel Entertainment LLC. All rights reserved.

Apple and the logo of Apple is registered by Apple, Inc. in the United States as well as the other related countries. App Store is the service logo of Apple, Inc.

Google Play is the service logo of Google, Inc.

Ironman MK50 Robot is designed by UBTECH Robotics and made in China.

The use of Ironman MK50 Robot denotes the acceptance of the user terms and the privacy terms.

Company Address: 16th and 22th Floor, Building C1, Nanshan I Park, No. 1001 Xueyuan Road, Nanshan District, Shenzhen City, P.R. China

7 Questions and Answers

What is the solution when the APP cannot connect with the robot?

Please first make sure that the Bluetooth is turned on and the robot has been started up. Open the App and put it near the robot, then the App will try to connect. If the connection still fails, please try re-starting the robot or refreshing the App.

What's the suggested environment for robot walking?

It is suggested that the users put the robot for walking on the floor with certain friction, like wood floor, thin carpet etc. Walking on the glass or wool surface is not recommended.

How to preserve the robot?

The Ironman MK50 Robot does not withstand high temperature and is not dust-free or water free. It is suggested to be kept in a dry place at the room temperature of 25°.

Why there is no reaction after placing the palm on the robot head?

The sensor area of the robot is in the front of the robot head, which mode is not turned on until you set and start up the respective Iron Guard protocol at the App.

8 Warranty

The warranty of the Ironman MK50 Robot is one year. During the warranty, UBTECH Robotics provides free maintenance and parts replacement for non-human caused performance failure. For purchase in the other countries, the purchaser is protected by the local consumer protection law or the local regulations.

The following situations are beyond the warranty:

- 1 Damage caused by usage not following the user manual.
- 2 Human caused or accidental damage to the product.
- 3 Unauthorized repair, modification, or damage to the sealing sticker of the product.
- 4 Aging, bruise or scratch of the product surface.

For further questions, please visit ironman.service@ubtrobot.com for more information or contact our service 400-6666-700 for help.

UBTECH

IRON MAN

MARK 50 ROBOT