

Antenna Specification

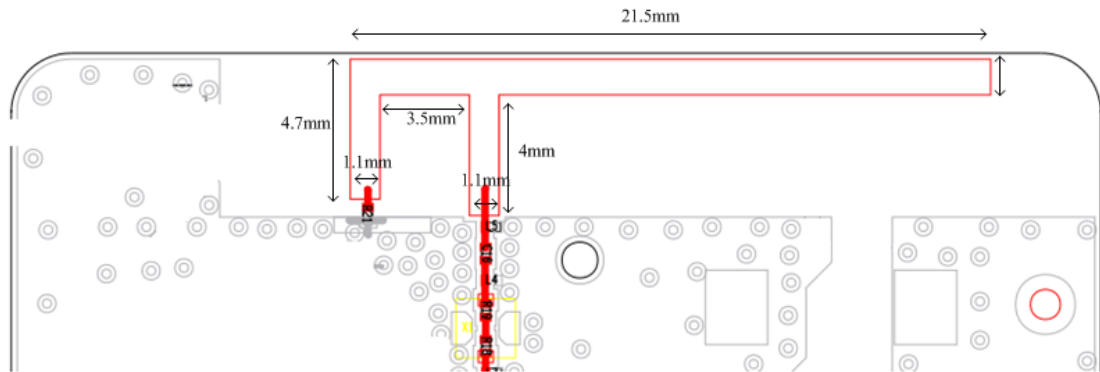
For

Manufactory:	Nubia Technology Co., Ltd.
Frequency range:	2.40GHz-2.50GHz
Antenna Type:	PCB Antenna
Model:	WD1102B
Antenna gain(MAX):	1.92 dBi
Approver	Tom Wang

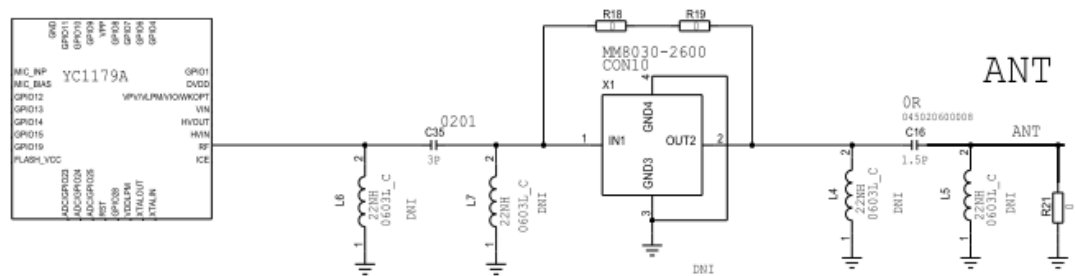
:

一： Antenna shape and size

Type of Antenna: PCB Antenna

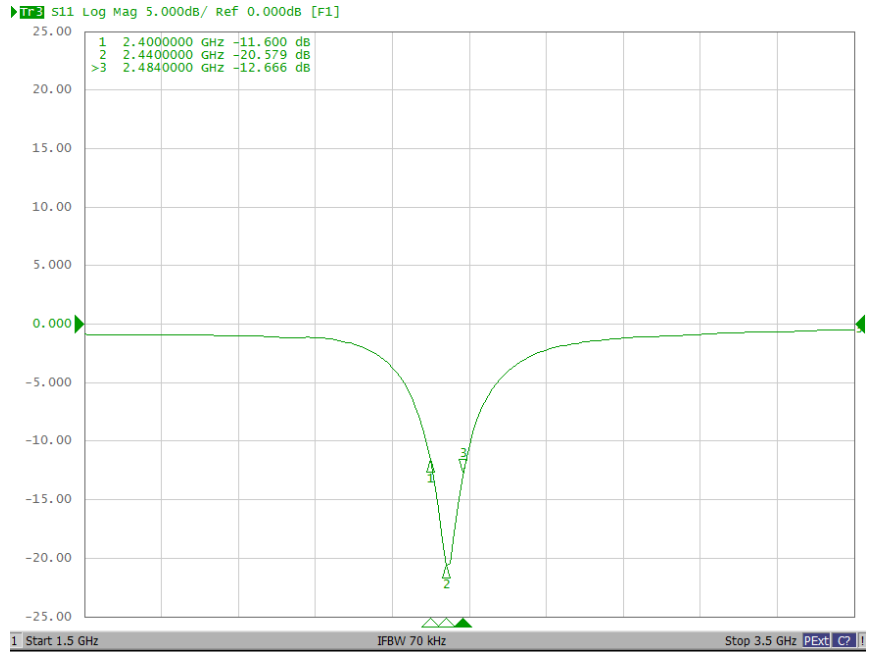


Antenna schematic



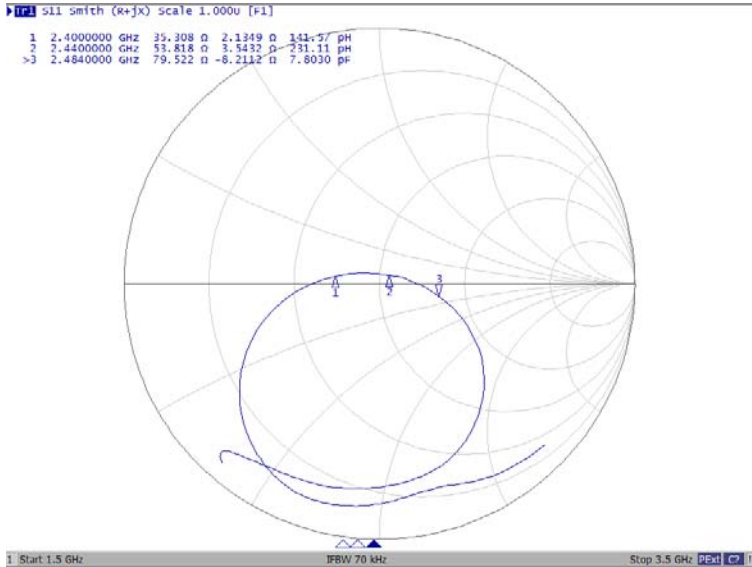


Antenna frequency and Gain: 2.4GHz-2.5 GHz

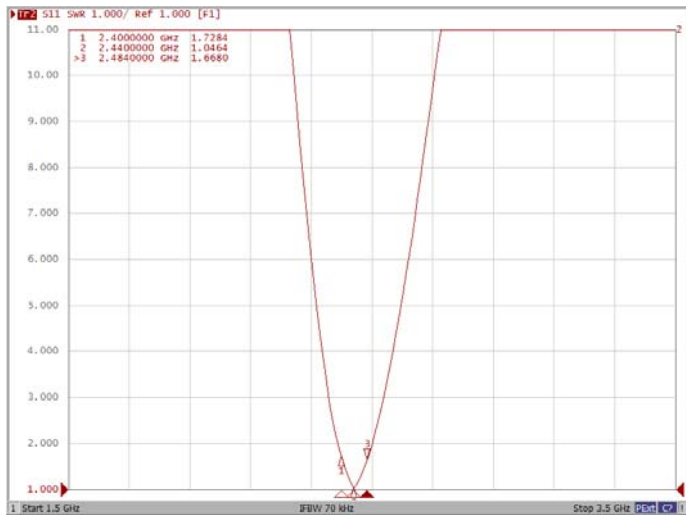


Freq_MHz	Directivity	Gain_dBi	Efficiency_dB	Efficiency_Pcent
2400	4.52	1.72	-2.80	52.52
2410	4.51	1.92	-2.59	55.09
2420	4.39	1.86	-2.53	55.85
2430	4.24	1.62	-2.62	54.68
2440	4.18	1.45	-2.72	53.40
2450	4.16	1.43	-2.72	53.42
2460	4.20	1.56	-2.64	54.42
2470	4.23	1.51	-2.72	53.45
2480	4.17	1.20	-2.97	50.46
2490	4.19	1.11	-3.08	49.25
2500	4.21	1.09	-3.12	48.75

Antenna impedance: $53.8\Omega + 3.54j\Omega$



Antenna voltage standing wave ratio: 1.0464



Antenna radiation pattern

