

# Antenna Specification

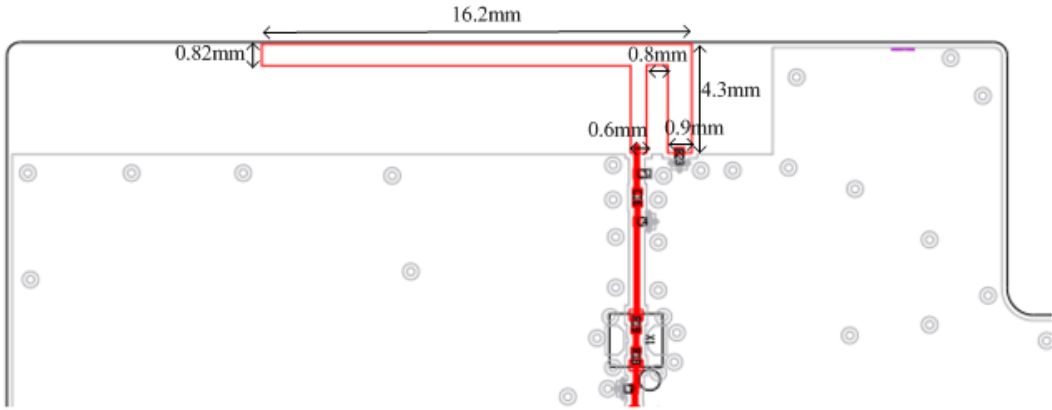
For

<b>Manufactory:</b>	Nubia Technology Co., Ltd.
<b>Frequency range:</b>	2.40GHz-2.50GHz
<b>Antenna Type:</b>	PCB Antenna
<b>Model:</b>	WD1102FI
<b>Antenna gain(MAX):</b>	1.86 dBi
<b>Approver</b>	Tom Wang

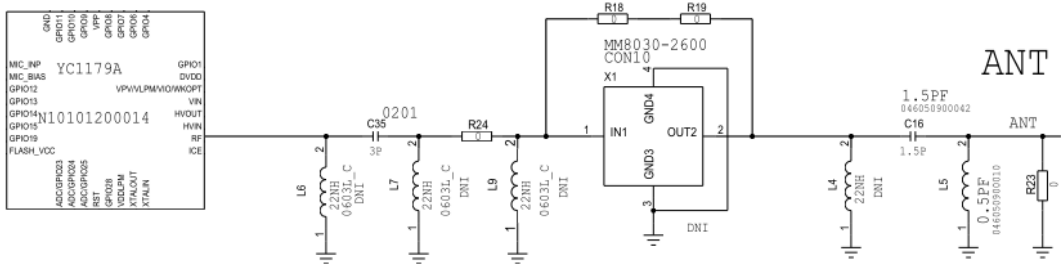
:

# Antenna shape and size

Type of Antenna: PCB Antenna

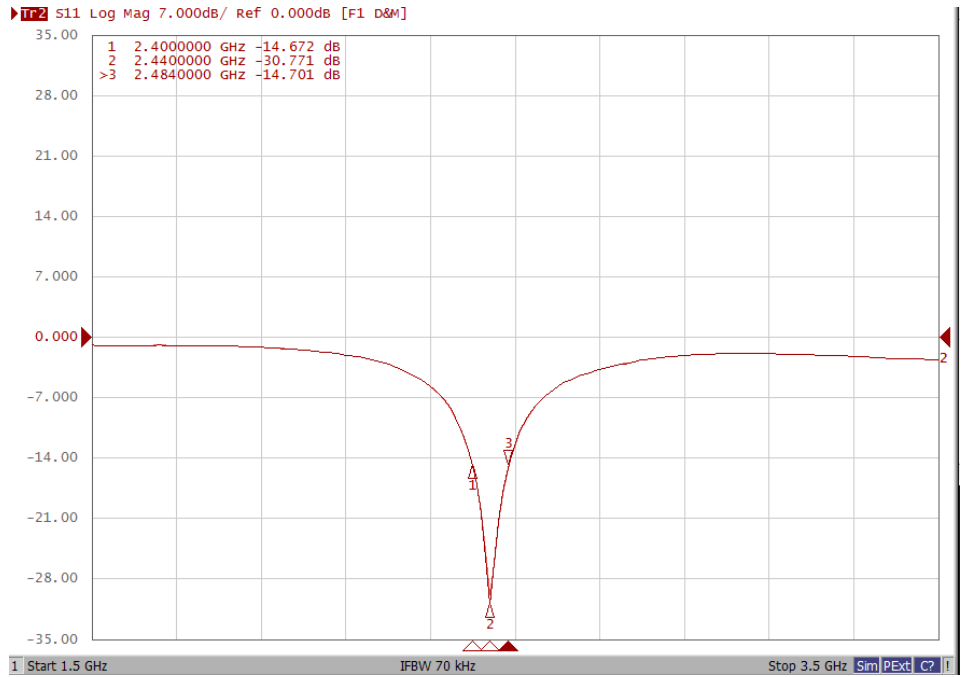


## Antenna schematic





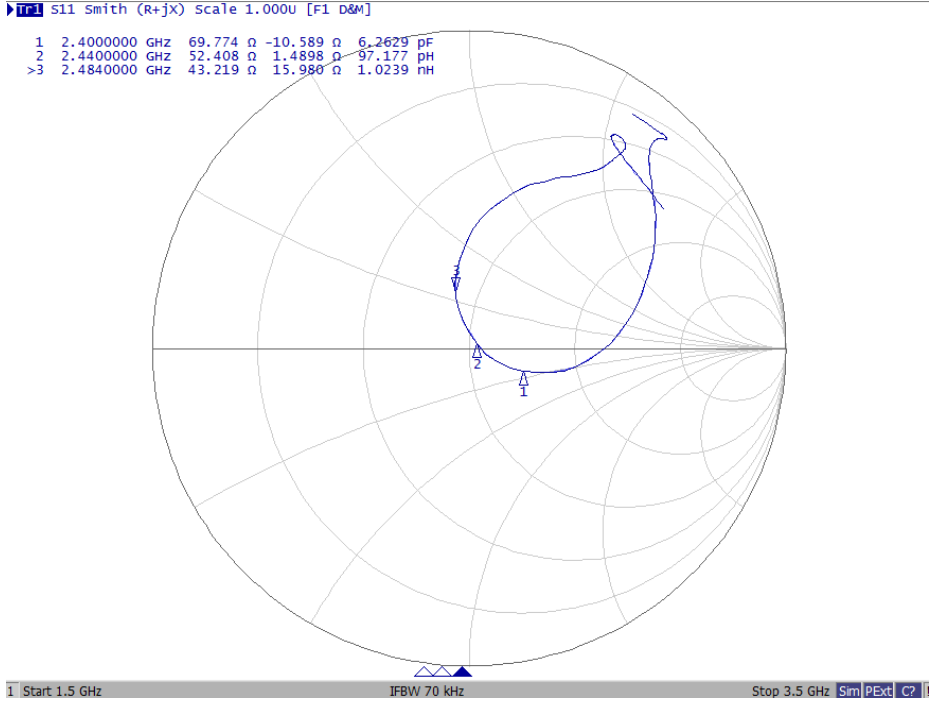
### Antenna frequency and Gain: 2.4GHz-2.5 GHz



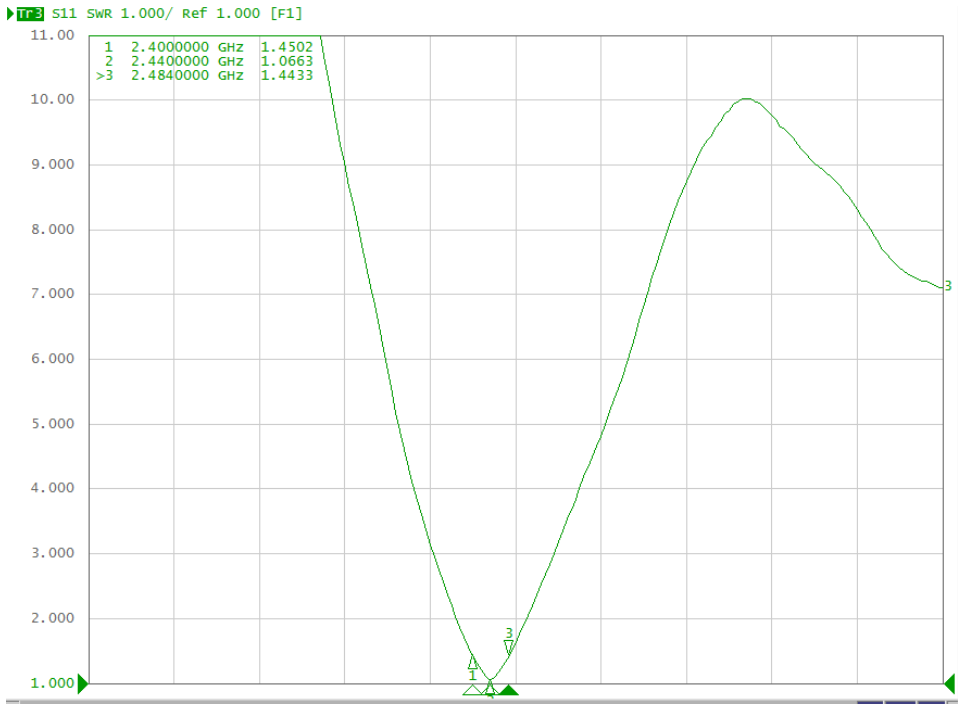
Freq	Directivity	Gain	Efficiency_dB	Efficiency_Pcent
2400	3.59	1.72	-1.87	64.97
2410	3.61	1.82	-1.79	66.22
2420	3.72	1.86	-1.86	65.19
2430	3.65	1.61	-2.04	62.51
2440	3.70	1.56	-2.14	61.12
2450	3.79	1.66	-2.13	61.22
2460	3.76	1.66	-2.10	61.72
2470	3.87	1.76	-2.11	61.51
2480	3.93	1.72	-2.21	60.06
2490	3.92	1.51	-2.40	57.52
2500	3.93	1.39	-2.54	55.72



**Antenna impedance:  $52.4\Omega + j1.49\Omega$**



**Antenna voltage standing wave ratio: 1.0663**



### Antenna radiation pattern

