

Antenna Specification

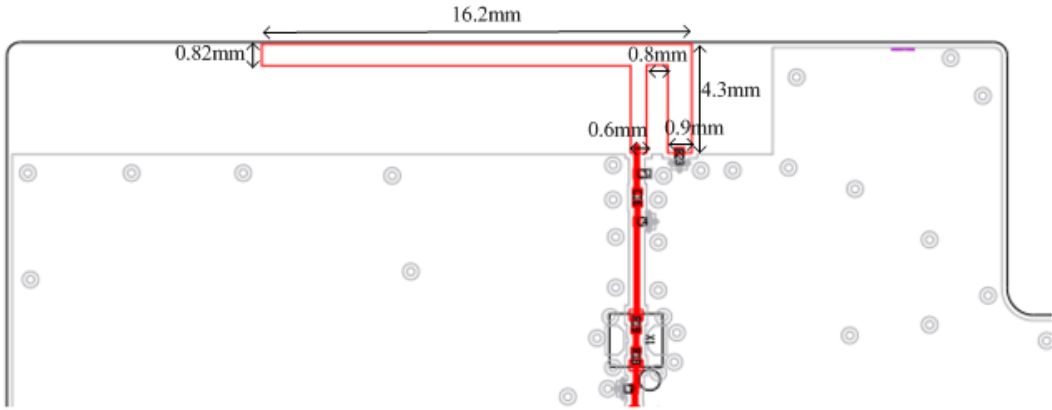
For

Manufactory:	Nubia Technology Co., Ltd.
Frequency range:	2.40GHz-2.50GHz
Antenna Type:	PCB Antenna
Model:	WD1102F
Antenna gain(MAX):	1.86 dBi
Approver	Tom Wang

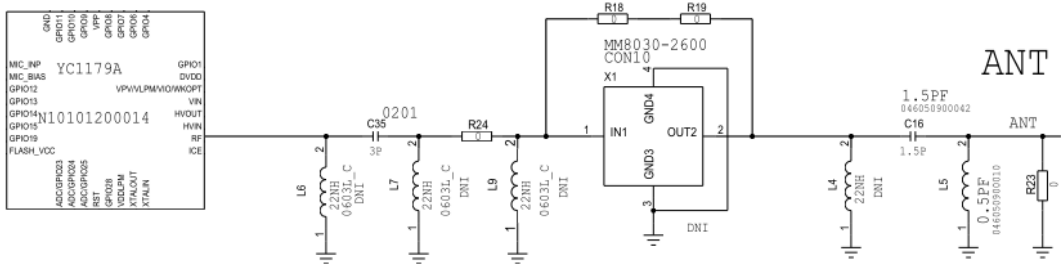
:

Antenna shape and size

Type of Antenna: PCB Antenna

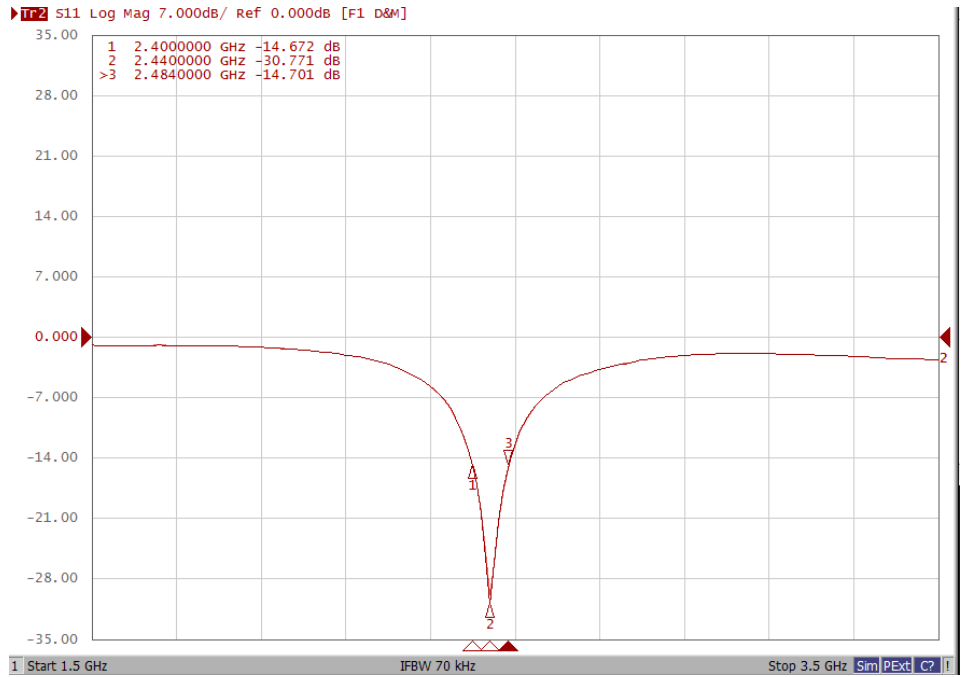


Antenna schematic





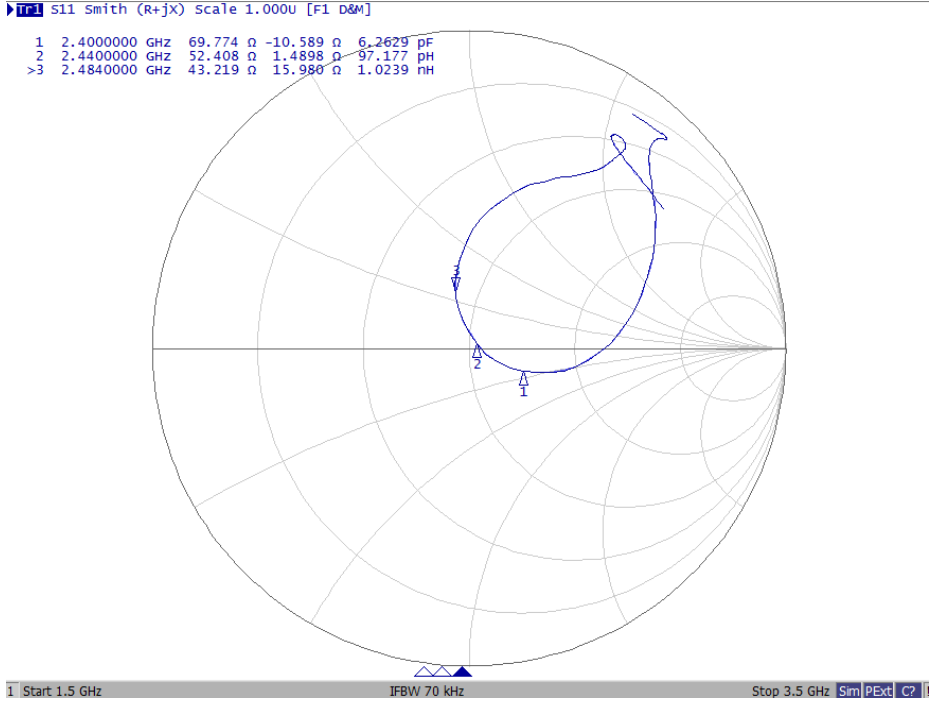
Antenna frequency and Gain: 2.4GHz-2.5 GHz



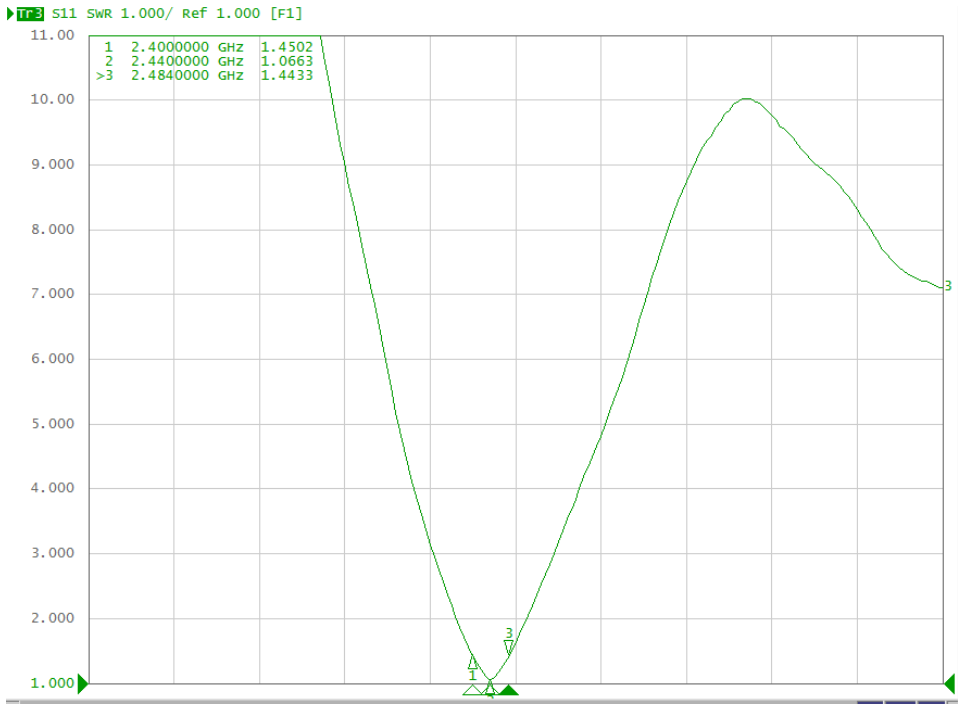
Freq	Directivity	Gain	Efficiency_dB	Efficiency_Pcent
2400	3.59	1.72	-1.87	64.97
2410	3.61	1.82	-1.79	66.22
2420	3.72	1.86	-1.86	65.19
2430	3.65	1.61	-2.04	62.51
2440	3.70	1.56	-2.14	61.12
2450	3.79	1.66	-2.13	61.22
2460	3.76	1.66	-2.10	61.72
2470	3.87	1.76	-2.11	61.51
2480	3.93	1.72	-2.21	60.06
2490	3.92	1.51	-2.40	57.52
2500	3.93	1.39	-2.54	55.72



Antenna impedance: $52.4\Omega + j1.49\Omega$



Antenna voltage standing wave ratio: 1.0663



Antenna radiation pattern

