

Antenna Specification

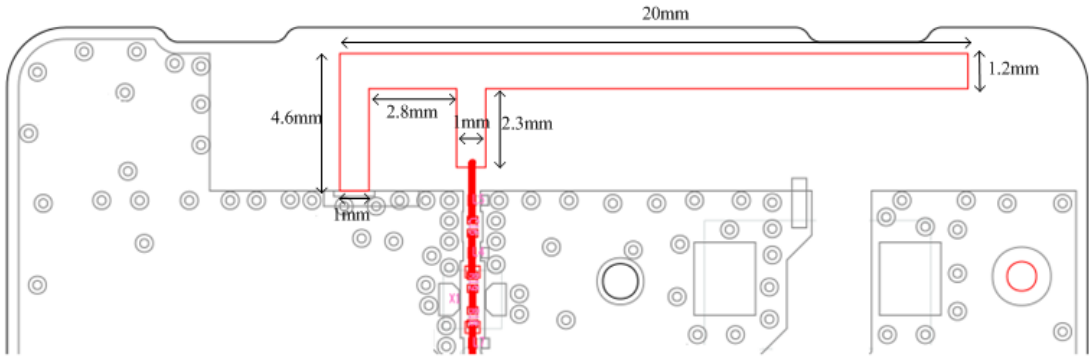
For

Manufactory:	Nubia Technology Co., Ltd.
Frequency range:	2.40GHz-2.50GHz
Antenna Type:	PCB Antenna
Model:	WD1102C
Antenna gain(MAX):	3.24 dBi
Approver	Tom Wang

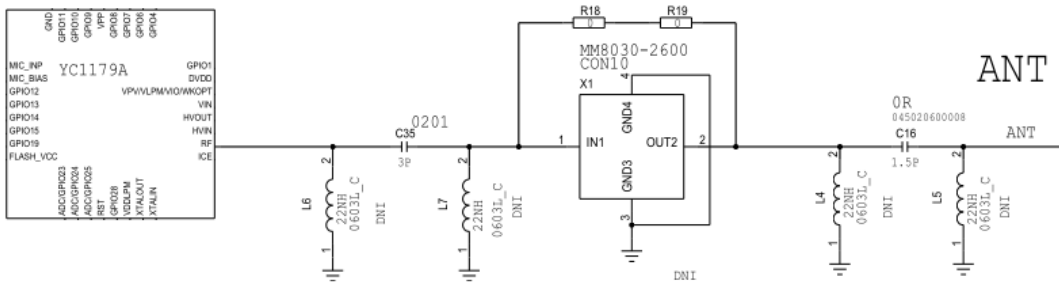
:

Antenna shape and size

Type of Antenna: PCB Antenna

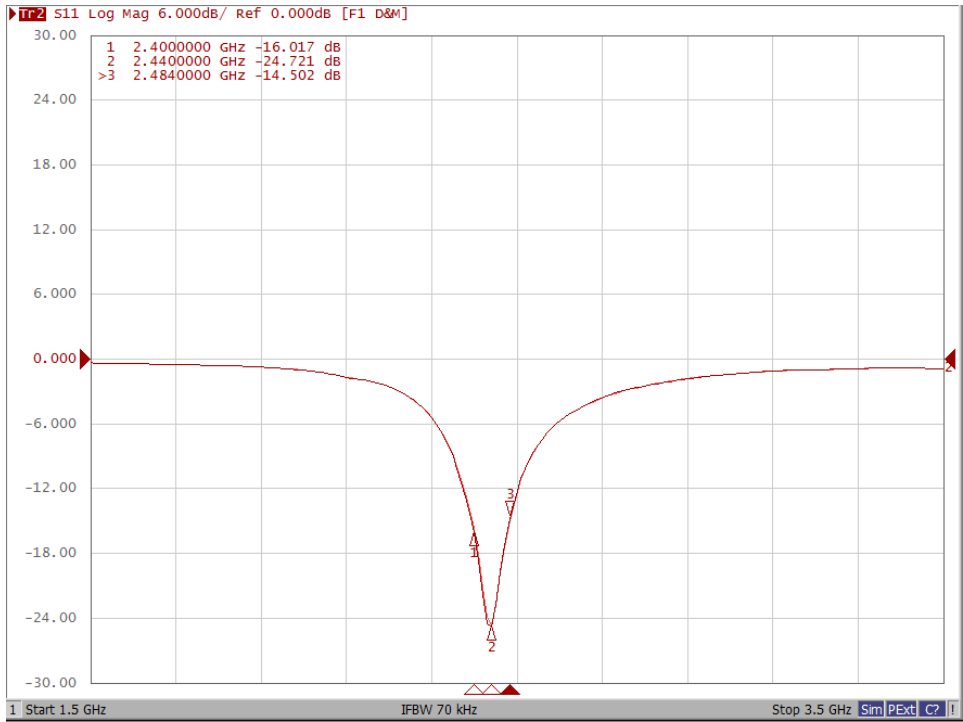


Antenna schematic





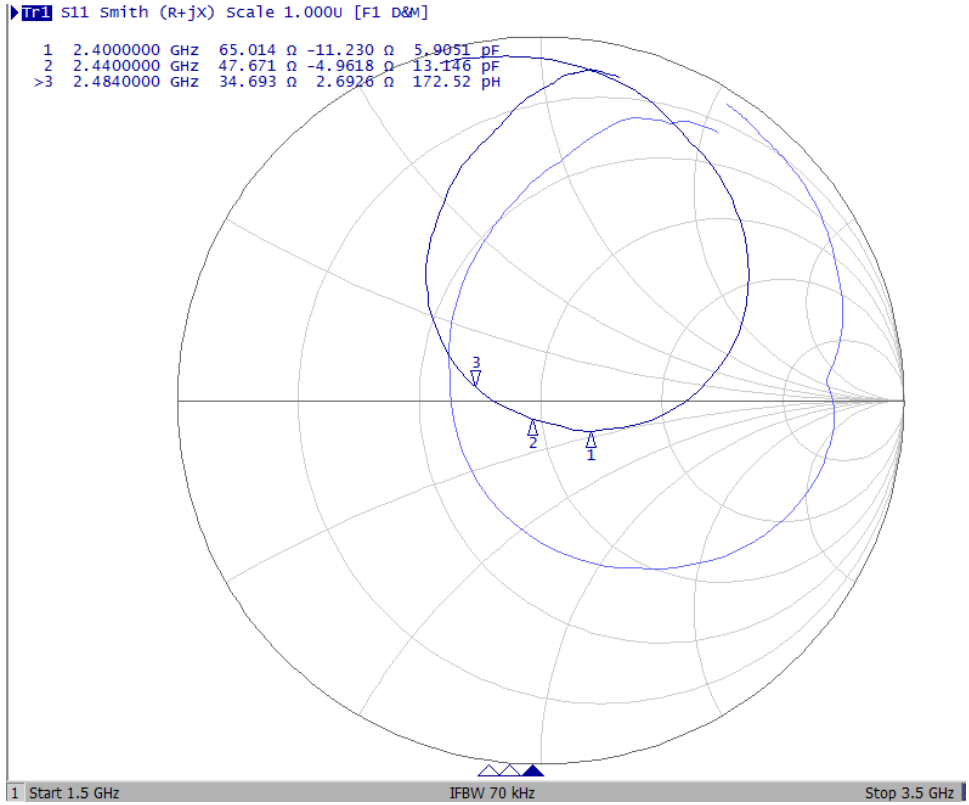
Antenna frequency and Gain: 2.4GHz-2.5 GHz



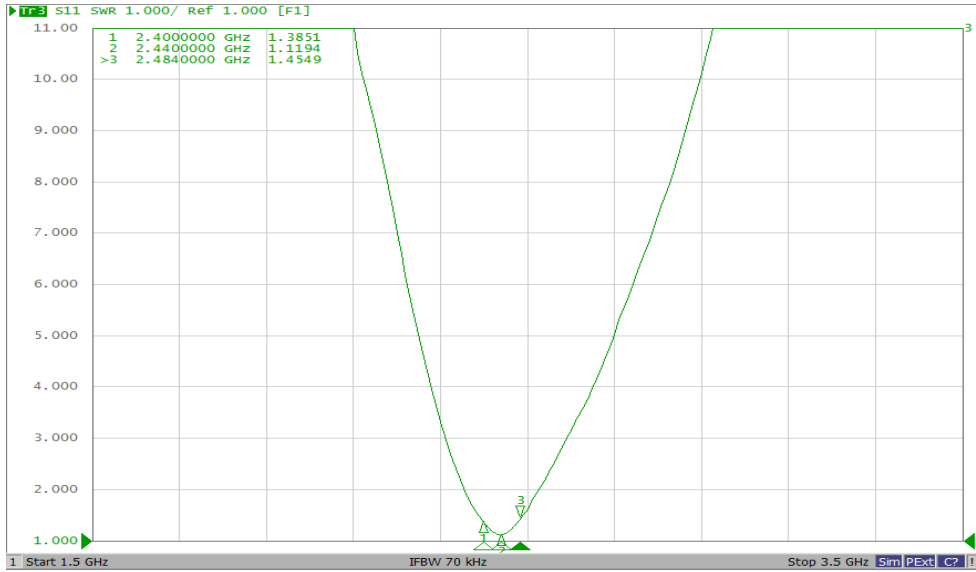
Freq_MHz	Directivity	Gain_dBi	Efficiency_dB	Efficiency_Pcent
2400	5.30	3.09	-2.21	60.06
2410	5.33	3.24	-2.09	61.84
2420	5.26	3.12	-2.13	61.20
2430	5.19	2.93	-2.26	59.38
2440	5.18	2.80	-2.38	57.81
2450	5.15	2.80	-2.35	58.22
2460	5.21	3.06	-2.15	60.95
2470	5.20	3.14	-2.06	62.18
2480	5.15	3.02	-2.13	61.25
2490	5.14	3.05	-2.09	61.79
2500	5.15	3.13	-2.02	62.75



Antenna impedance: $47.67\Omega - j4.96\Omega$



Antenna voltage standing wave ratio: 1.1194



Antenna radiation pattern

