



# Hearing Aid Compatibility (HAC) RF Emissions Test Report

**APPLICANT** : Nubia Technology Co.,Ltd.  
**PRODUCT NAME** : 5G Mobile Phone  
**MODEL NAME** : NX669J  
**BRAND NAME** : REDMAGIC  
**FCC ID** : 2AHJO-NX669J  
**STANDARD(S)** : FCC 47 CFR Part 20(20.19)  
ANSI C63.19-2011  
**RECEIPT DATE** : 2021-01-03  
**TEST DATE** : 2021-03-12  
**ISSUE DATE** : 2021-03-24

Edited by: Liang Yumei  
Liang Yumei (Rapporteur)  
Approved by: Peng Huarui  
Peng Huarui (Supervisor)

**NOTE:** This document is issued by MORLAB, the test report shall not be reproduced except in full without prior written permission of the company. The test results apply only to the particular sample(s) tested and to the specific tests carried out which is available on request for validation and information confirmed at our website.





# DIRECTORY

|                                             |    |
|---------------------------------------------|----|
| 1. Attestation of Testing Summary           | 4  |
| 2. Technical Information                    | 5  |
| 2.1. Applicant and Manufacturer Information | 5  |
| 2.2. Equipment under Test (EUT) Description | 5  |
| 2.3. Photographs of the EUT                 | 4  |
| 2.4. Applied Reference Documents            | 4  |
| 3. RF Audio Interference Level              | 5  |
| 4. Air Interface and Operating Mode         | 6  |
| 5. HAC (RF) Measurement System              | 8  |
| 5.1. RF Measurement Setup                   | 8  |
| 5.2. System Unit                            | 9  |
| 6. RF Measurement Procedure                 | 11 |
| 6.1. General Guidance                       | 11 |
| 6.2. RF Test Instructions                   | 12 |
| 7. Test Equipment List                      | 14 |
| 8. System Validation                        | 15 |
| 8.1. Test setup                             | 15 |
| 8.2. Validation Result                      | 16 |
| 9. Modulation Interference Factor           | 17 |
| 10. Conducted Power                         | 19 |
| 10.1. Full Power                            | 19 |
| 10.2. Reduced Power                         | 21 |
| 11. Low-power Exemption                     | 23 |
| 12. Summary Test Results                    | 24 |
| 13. Uncertainty Assessment                  | 26 |
| Annex A General Information                 | 27 |



- Annex B Test Setup Photos**
- Annex C Plots of Performance System Check**
- Annex D Plots of RF Emission Test Results**
- Annex E DASY Calibration Certificate**

| <b>Change History</b> |             |                          |
|-----------------------|-------------|--------------------------|
| <b>Version</b>        | <b>Date</b> | <b>Reason for change</b> |
| 1.0                   | 2021-03-24  | First edition            |
|                       |             |                          |



# 1. Attestation of Testing Summary

| Air Interface   | Frequency Band | E-field M-Rating |
|-----------------|----------------|------------------|
| GSM CMRS Voice  | GSM850         | M4               |
|                 | GSM1900        | M3               |
| CDMA CMRS Voice | CDMA BC 0      | M4               |
|                 | CDMA BC 1      | M4               |
| LTE             | LTE Band 38    | M4               |
|                 | LTE Band 40A   | M4               |
|                 | LTE Band 40B   | M4               |

**Note:**

1. It is compliance with HAC limits for this device that specified in FCC 47 CFR Part 20.19 and ANSI C63.19.
2. When the test result is a critical value, we will use the measurement uncertainty give the judgment result based on the 95% risk level.



## 2. Technical Information

Note: Provide by Applicant.

### 2.1. Applicant and Manufacturer Information

|                              |                                                                                                                                              |
|------------------------------|----------------------------------------------------------------------------------------------------------------------------------------------|
| <b>Applicant:</b>            | Nubia Technology Co.,Ltd.                                                                                                                    |
| <b>Applicant Address:</b>    | Room 1801, Building 2, Chongwen Park, Nanshan Zhiyuan, No.3370, Liuxian Rd, Nanshan District, Shenzhen City,Guangdong Province, P. R. China  |
| <b>Manufacturer:</b>         | Nubia Technology Co.,Ltd.                                                                                                                    |
| <b>Manufacturer Address:</b> | Room 1801, Building 2, Chongwen Park, Nanshan Zhiyuan, No.3370, Liuxian Rd, Nanshan District, Shenzhen City, Guangdong Province, P. R. China |

### 2.2. Equipment under Test (EUT) Description

|                          |                                                                                                                                                                                                                                                                                                                                                                                                                                                                                                                                                                                                                                                                                                                       |
|--------------------------|-----------------------------------------------------------------------------------------------------------------------------------------------------------------------------------------------------------------------------------------------------------------------------------------------------------------------------------------------------------------------------------------------------------------------------------------------------------------------------------------------------------------------------------------------------------------------------------------------------------------------------------------------------------------------------------------------------------------------|
| <b>Product Name:</b>     | 5G Mobile Phone                                                                                                                                                                                                                                                                                                                                                                                                                                                                                                                                                                                                                                                                                                       |
| <b>Hardware Version:</b> | NX669J_V1AMB                                                                                                                                                                                                                                                                                                                                                                                                                                                                                                                                                                                                                                                                                                          |
| <b>Software Version:</b> | NX669J_EUCommon_V3.05                                                                                                                                                                                                                                                                                                                                                                                                                                                                                                                                                                                                                                                                                                 |
| <b>Frequency Bands:</b>  | GSM 850: 824 MHz ~ 849 MHz<br>GSM 1900: 1850 MHz ~ 1910 MHz<br>WCDMA Band II: 1850 MHz ~ 1910 MHz<br>WCDMA Band IV: 1710 MHz ~ 1755 MHz<br>WCDMA Band V: 824 MHz ~ 849 MHz<br>CDMA2000 BC0: 824 MHz ~ 849 MHz<br>CDMA2000 BC1: 1850 MHz ~ 1910 MHz<br>LTE Band 2: 1850 MHz ~ 1910 MHz<br>LTE Band 4: 1710 MHz ~ 1755 MHz<br>LTE Band 5: 824 MHz ~ 849 MHz<br>LTE Band 7: 2500 MHz ~ 2570MHz<br>LTE Band 12: 699 MHz ~ 716 MHz<br>LTE Band 17: 704 MHz ~ 716 MHz<br>LTE Band 18: 815 MHz ~ 830MHz<br>LTE Band 19: 830 MHz ~ 845MHz<br>LTE Band 26: 814 MHz ~ 849 MHz<br>LTE Band 38: 2570 MHz ~ 2620 MHz<br>LTE Band 40A: 2305 MHz ~ 2315 MHz<br>LTE Band 40B: 2350 MHz ~ 2360 MHz<br>LTE Band 66: 1710 MHz ~ 1780 MHz |



|                               |                                                                                                                                                                                                                                                                                                                                                                                                                       |                                    |
|-------------------------------|-----------------------------------------------------------------------------------------------------------------------------------------------------------------------------------------------------------------------------------------------------------------------------------------------------------------------------------------------------------------------------------------------------------------------|------------------------------------|
|                               | 5G NR n41: 2496 MHz ~ 2690 MHz<br>WLAN 2.4GHz: 2412 MHz ~ 2462 MHz<br>WLAN 5.2GHz: 5180 MHz ~ 5240 MHz<br>WLAN 5.3GHz: 5260 MHz ~ 5320 MHz<br>WLAN 5.6GHz: 5500 MHz ~ 5720 MHz<br>WLAN 5.8GHz: 5745 MHz ~ 5825 MHz<br>Bluetooth: 2402 MHz ~ 2480 MHz<br>NFC: 13.56MHz                                                                                                                                                 |                                    |
| <b>Modulation Mode:</b>       | GSM/GPRS: GMSK<br>EDGE: 8PSK<br>WCDMA: QPSK, 16QAM, 64QAM<br>CDMA2000 1XRTT: QPSK<br>CDMA2000 1XEV-DO: QPSK<br>LTE: QPSK, 16QAM, 64QAM<br>5G NR: DFT-s-OFDM/CP-OFDM, PI/2 BPSK<br>QPSK, 16QAM, 64QAM, 256QAM<br>802.11b: DSSS<br>802.11a/g/n-HT20/HT40/ac-VHT20/40/80: OFDM<br>802.11ax-HEW20/40/80/160: OFDMA<br>BR+EDR: GFSK(1Mbps), $\pi/4$ -DQPSK(2Mbps), 8-DPSK(3Mbps)<br>Bluetooth LE: GFSK(1Mbps)<br>NFC : ASK |                                    |
| <b>Multi-slot Class:</b>      | GPRS: Multi-slot Class 33<br>EDGE: Multi-slot Class 33                                                                                                                                                                                                                                                                                                                                                                |                                    |
| <b>Operation Class:</b>       | Class B                                                                                                                                                                                                                                                                                                                                                                                                               |                                    |
| <b>Carrier Aggregation:</b>   | Downlink Only                                                                                                                                                                                                                                                                                                                                                                                                         |                                    |
| <b>VoLTE Mode:</b>            | Support                                                                                                                                                                                                                                                                                                                                                                                                               |                                    |
| <b>Hotspot Mode:</b>          | WWAN/2.4G WLAN                                                                                                                                                                                                                                                                                                                                                                                                        |                                    |
| <b>WWAN MIMO:</b>             | 2 x 2                                                                                                                                                                                                                                                                                                                                                                                                                 |                                    |
| <b>WLAN MIMO:</b>             | 2 x 2                                                                                                                                                                                                                                                                                                                                                                                                                 |                                    |
| <b>Antenna Type:</b>          | WWAN: PIFA Antenna<br>WLAN: PIFA Antenna<br>Bluetooth: PIFA Antenna<br>NFC: Loop Antenna                                                                                                                                                                                                                                                                                                                              |                                    |
| <b>Battery:</b>               | Manufacturer:                                                                                                                                                                                                                                                                                                                                                                                                         | Dongguan Ampere Technology Limited |
|                               | Model Name:                                                                                                                                                                                                                                                                                                                                                                                                           | Li3945T44P8h906455                 |
|                               | Capacity:                                                                                                                                                                                                                                                                                                                                                                                                             | 4960mAh                            |
|                               | Rated Voltage:                                                                                                                                                                                                                                                                                                                                                                                                        | 3.87V                              |
| <b>SIM Cards Description:</b> | SIM 1                                                                                                                                                                                                                                                                                                                                                                                                                 | GSM+ WCDMA+CDMA+LTE+5G NR          |



|  |                                                                                                                                                     |                           |
|--|-----------------------------------------------------------------------------------------------------------------------------------------------------|---------------------------|
|  | SIM 2                                                                                                                                               | GSM+ WCDMA+CDMA+LTE+5G NR |
|  | For dual SIM card version, both the SIM 1 and SIM 2 share the same chipset unit and tested as a single chipset, the SIM 1 was selected for testing. |                           |

**Note:**

For more detailed description, please refer to specification or user manual supplied by the applicant and/or manufacturer.



## 2.3. Photographs of the EUT

**Note:** Please refer to the External Photos for the Photos of the EUT

## 2.4. Applied Reference Documents

**Leading reference documents for testing:**

| No. | Identity                   | Document Title                                                                                                              | Method determination /Remark |
|-----|----------------------------|-----------------------------------------------------------------------------------------------------------------------------|------------------------------|
| 1   | FCC 47 CFR Part 20 (20.19) | Hearing aid-compatible mobile handsets.                                                                                     | No deviation                 |
| 2   | ANSI C63.19-2011           | American National Standard Methods of Measurement of Compatibility between Wireless Communications Devices and Hearing Aids | No deviation                 |
| 3   | KDB 285076 D01v05          | HAC Guidance                                                                                                                | No deviation                 |



### 3. RF Audio Interference Level

FCC wireless hearing aid compatibility rules ensure that consumers with hearing loss are able to access wireless communications services through a wide selection of handsets without experiencing disabling radio frequency (RF) interference or other technical obstacles. To define and measure the hearing aid compatibility of handsets, in CFR47 part 20.19 ANSI C63.19 is referenced.

A handset is considered hearing aid-compatible for acoustic coupling if it meets a rating of at least M3 under ANSI C63.19, and A handset is considered hearing aid compatible for inductive coupling if it meets a rating of at least T3. According to ANSI C63.19 2011 version, for acoustic coupling, the RF electric field emissions of wireless communication devices should be measured and rated according to the emission level as below.

**Table 3.1 WD RF audio Interference level categories in logarithmic units**

| Emission Categories | E-field Emissions |                   |
|---------------------|-------------------|-------------------|
|                     | <960MHz           | >960MHz           |
| M1                  | 50 to 55 dB (V/m) | 45 to 50 dB (V/m) |
| M2                  | 45 to 50 dB (V/m) | 35 to 40 dB (V/m) |
| M3                  | 40 to 45 dB (V/m) | 30 to 35 dB (V/m) |
| M4                  | <40 dB (V/m)      | <30 dB (V/m)      |

**Table 3.2 System performance classification table**

| System classification | Category sum                                         |
|-----------------------|------------------------------------------------------|
|                       | Hearing aid category + telephone category            |
| Usable                | Hearing aid category + telephone category = 4        |
| Normal use            | Hearing aid category + telephone category = 5        |
| Excellent performance | Hearing aid category + telephone category = $\geq 6$ |



## 4. Air Interface and Operating Mode

| Air Interface     | Band            | Transport Type | Simultaneous Transmitter | Name of Voice Service | Power Reduction |
|-------------------|-----------------|----------------|--------------------------|-----------------------|-----------------|
| GSM               | GSM850          | VO             | WLAN & BT                | CMRS Voice            | No              |
|                   | GSM1900         |                |                          |                       | No              |
|                   | EDGE850         | DT             | WLAN & BT                | N/A                   | No              |
|                   | EDGE1900        |                |                          |                       | No              |
| WCDMA (UMTS)      | Band II         | VO             | WLAN & BT                | CMRS Voice            | No              |
|                   | Band IV         |                |                          |                       | No              |
|                   | Band V          |                |                          |                       | No              |
|                   | HSPA            | DT             | WLAN & BT                | N/A                   | No              |
| CDMA              | BC0             | VO             | WLAN&BT                  | CMRS Voice            | No              |
|                   | EVDO            | DT             | WLAN&BT                  | N/A                   | No              |
|                   | BC1             | VO             | WLAN&BT                  | CMRS Voice            | No              |
|                   | EVDO            | DT             | WLAN&BT                  | N/A                   | No              |
| FDD-LTE & TDD-LTE | Band 2          | VO             | WLAN & BT                | VoLTE                 | No              |
|                   | Band 4          |                |                          |                       | No              |
|                   | Band 5          |                |                          |                       | No              |
|                   | Band 7          |                |                          |                       | No              |
|                   | Band 12         |                |                          |                       | No              |
|                   | Band 17         |                |                          |                       | No              |
|                   | Band 18         |                |                          |                       | No              |
|                   | Band 19         |                |                          |                       | No              |
|                   | Band 26         |                |                          |                       | No              |
|                   | Band 38         |                |                          |                       | No              |
|                   | Band 40         |                |                          |                       | No              |
| Band 66           | No              |                |                          |                       |                 |
| WiFi              | 2450            | DT             | GSM,UMTS, CDMA, LTE      | N/A                   | No              |
|                   | 5200 (U-NII-1)  |                |                          |                       | No              |
|                   | 5300 (U-NII-2A) |                |                          |                       | No              |
|                   | 5500 (U-NII-2C) |                |                          |                       | No              |
|                   | 5800 (U-NII-3)  |                |                          |                       | No              |
| BT                | 2450            | DT             | GSM,UMTS, CDMA, LTE      | N/A                   | No              |

**Where:**

VO=Voice Only

DT=Digital Transport only



VD=CMRS and IP Voice Service over Digital Transport

BT=Bluetooth

\* Ref Lev in accordance with 7.4.2.1 of ANSI C63.19-2011 and the July 2012 VoLTE interpretation

\*\* Ref Lev -20 dBm0

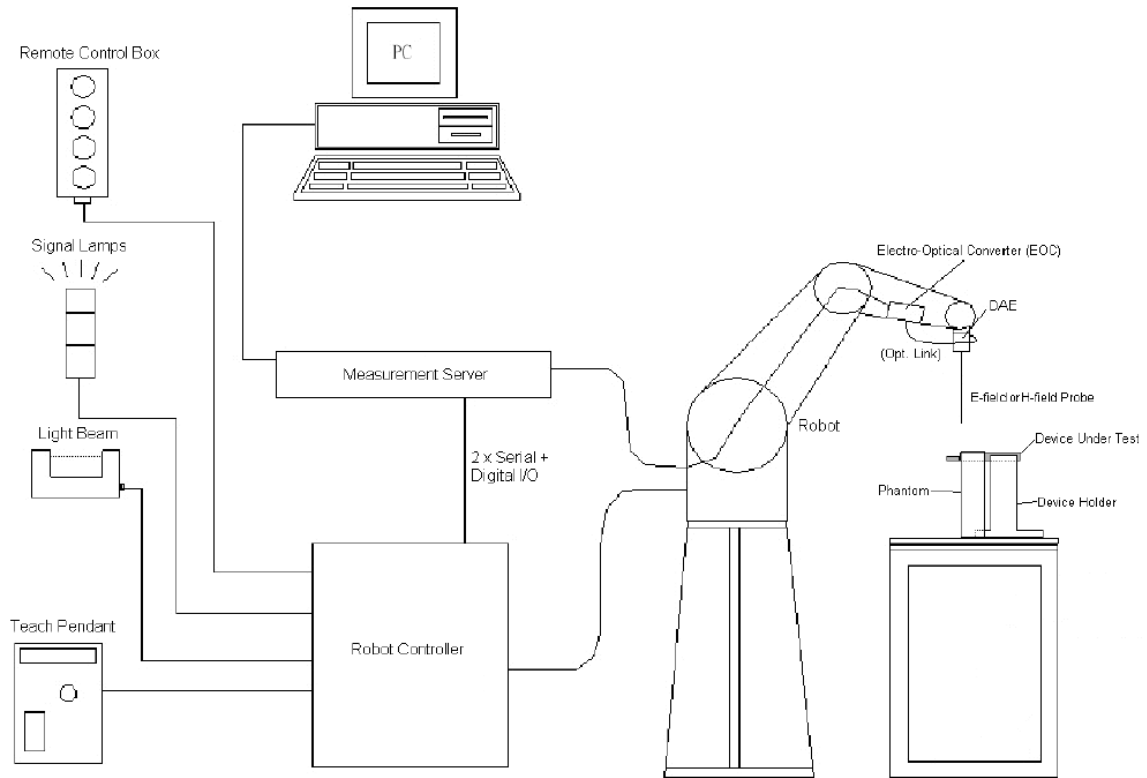
\*\*\* Ref Lev XYNet established by KDB Inquiry NNNNNN @ -16 dBm0

**Note:**

- 1) Air Interface/Band MHz: List of all air interfaces and bands supported by the handset.
- 2) Type: For each air interface, indicate the type of voice transport mode:
  - i. VO = legacy Cellular Voice Service, from Table 7.1 in 7.4.2.1 of ANSI C63.19-2011;
  - ii. DT = Digital Transport only (no voice);
  - iii. VD = IP Voice Service over Digital Transport.
- 3) Simultaneous Transmitter: Indicate any air interface/bands that operate in simultaneous or concurrent service transmission mode.
- 4) Name of Voice Service: See Q4 in 285076 D03 HAC FAQ for further clarification.
  - a) Ref Lev in accordance with 7.4.2.1 of ANSI C63.19-2011 and the July 2012 VoLTE interpretation
  - b) \*\* Ref Lev -20 dBm0
  - c) \*\*\* Ref Lev XYNet established by KDB Inquiry NNNNNN @ -16 dBm0

## 5. HAC (RF) Measurement System

### 5.1. RF Measurement Setup



**Fig 5.1 SPEAG RF System Configurations**


## 5.2. System Unit

### ➤ E-Field Probe

The RF measurement is conducted with the dosimetric probe (manufactured by SPEAG). The probe is specially designed and calibrated for use with high permittivity. The dosimetric probe has special calibration at different frequency. This probe has a built in optical surface detection system to prevent from collision with phantom.

### E-Field Probe Specification

#### <ER3DV6>

|                                                                                                                                                                                                                                                                            |                                                                                                                              |                                                                                                                                                        |
|----------------------------------------------------------------------------------------------------------------------------------------------------------------------------------------------------------------------------------------------------------------------------|------------------------------------------------------------------------------------------------------------------------------|--------------------------------------------------------------------------------------------------------------------------------------------------------|
| Construction                                                                                                                                                                                                                                                               | One dipole parallel, two dipoles normal to probe axis<br>Built-in shielding against static charges                           |  <p style="text-align: center;"><b>Fig 5.2 Photo of ER3DV6</b></p> |
| Calibration                                                                                                                                                                                                                                                                | In air from 100 MHz to 3.0 GHz<br>(Absolute accuracy $\pm 6.0\%$ , $k=2$ )                                                   |                                                                                                                                                        |
| Frequency                                                                                                                                                                                                                                                                  | 10 MHz to 6 GHz; Linearity: $\pm 0.2$ dB                                                                                     |                                                                                                                                                        |
| Directivity                                                                                                                                                                                                                                                                | $\pm 0.2$ dB in HSL (rotation around probe axis)<br>$\pm 0.4$ dB in HSL (rotation normal to probe axis)                      |                                                                                                                                                        |
| Dynamic Range                                                                                                                                                                                                                                                              | 2 V/m to 1000 V/m<br>(M3 or better device readings fall well below diode compression point)                                  |                                                                                                                                                        |
| Linearity                                                                                                                                                                                                                                                                  | $\pm 0.2$ dB                                                                                                                 |                                                                                                                                                        |
| Dimensions                                                                                                                                                                                                                                                                 | Overall length: 330 mm (Tip: 16 mm)<br>Tip diameter: 8 mm (Body: 12 mm)<br>Distance from probe tip to dipole centers: 2.5 mm |                                                                                                                                                        |
| <b>Probe Tip Description:</b><br>HAC field measurements take place in the close near field with high gradients. Increasing the measuring distance from the source will generally decrease the measured field values (in case of the validation dipole approx. 10% per mm). |                                                                                                                              |                                                                                                                                                        |

➤ **Data Acquisition Electronics (DAE)**

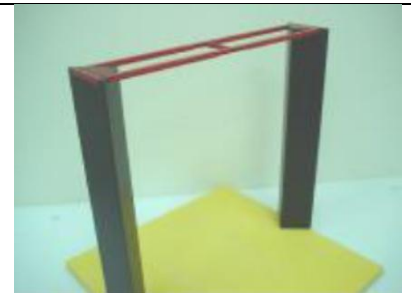
The data acquisition electronics (DAE) consists of a highly sensitive electrometer-grade preamplifier with auto-zeroing, a channel and gain-switching multiplexer, a fast 16 bit AD-converter and a command decoder and control logic unit. AD-converter and a command decoder and control logic unit. Transmission to the measurement server is accomplished through an optical downlink for data and status information as well as an optical uplink for commands and the clock. The input impedance of the DAE is 200 MOhm; the inputs are symmetrical and floating. Common mode rejection is above 80 dB.



**Fig 5.3 Photo of DAE**

➤ **Test Arch**

|                     |                                                                                                                                            |
|---------------------|--------------------------------------------------------------------------------------------------------------------------------------------|
| <b>Construction</b> | Active single sensor probe for both the axial and radial measurement scans – Fully RF shielded, compatible with DAE and adapted probe cup. |
| <b>Dimensions</b>   | Length: 370 mm<br>Width: 370 mm<br>Height: 370 mm                                                                                          |



**Fig 5.4 Photo of Arch**



## 6. RF Measurement Procedure

### 6.1. General Guidance

Referenced from ANSI C63.19 -2011 section 5.5.1:

1. Confirm the proper operation of the field probe, probe measurement system, and other instrumentation and the positioning system.
2. Position the WD in its intended test position.
3. Set the WD to transmit a fixed and repeatable combination of signal power and modulation characteristic that is representative of the worst case (highest interference potential) encountered in normal use. Transiently occurring start-up, changeover, or termination conditions, or other operations likely to occur less than 1% of the time during normal operation, may be excluded from consideration. Transiently occurring start-up, changeover, or termination conditions, or other operations likely to occur less than 1% of the time during normal operation, may be excluded from consideration.
4. The center sub-grid shall be centered on the T-Coil mode perpendicular measurement point or the acoustic output, as appropriate. Locate the field probe at the initial test position in the 50 mm by 50 mm grid, which is contained in the measurement plane, refer to illustrated in Figure 8.2. If the field alignment method is used, align the probe for maximum field reception.
5. Record the reading at the output of the measurement system.
6. Scan the entire 50 mm by 50 mm region in equality spaced increments and record the reading at each measurement point, the distance between measurement points shall be sufficient to assure the identification of the maximum reading.
7. Identify the five contiguous sub-grids around the center sub-grid whose maximum reading is the lowest of all available choices. This eliminates the three sub-grids with the maximum readings. Thus, the six areas to be used to determine the WD's highest emissions are identified.
8. Identify the maximum reading within the non-excluded sub-grids identified in step 7).
9. Convert the maximum reading identified in step 8) to RF audio interference level, in, V/m, by taking the square root of the reading and then dividing it by the measurement system transfer function, established in ANSI C63.19 -2011 section 5.5.1.1. Convert the result to dB(V/m) by taking the base-10 logarithm and multiplying it by 20. Expressed as a formula:

$$\text{RF audio interference level in dB(V/m)} = 20 \times \log(R_{\max}^{1/2}/TF),$$

where  $R_{\max}$  is the maximum reading.

10. The RF audio interference level in dB (V/m) is obtained by adding the MIF (in dB) to the maximum steady-state rms field-strength reading, in dB (V/m)
11. Compare this RF audio interference level with the categories in ANSI C63.19-2011 clause 8 and record the resulting WD category rating.

## 6.2. RF Test Instructions

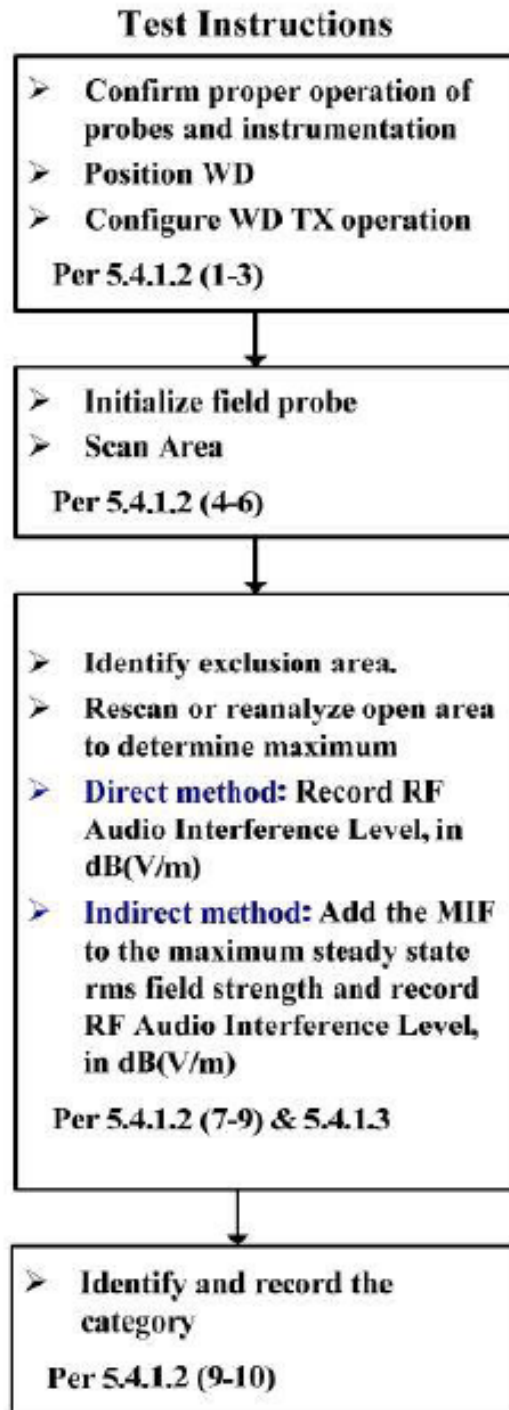


Fig 6.1 WD near-field emission scan flowchart



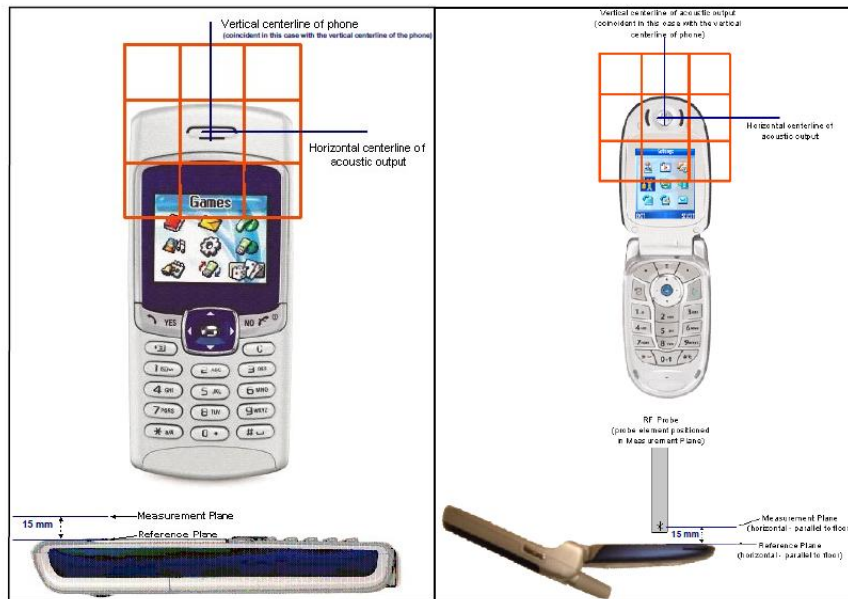


Fig 6.2 WD reference and plane for RF emission measurements

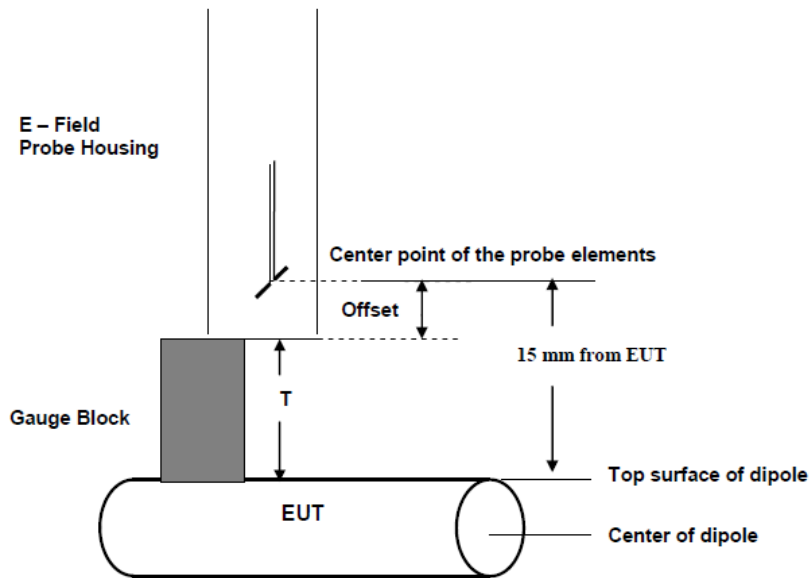


Fig 6.3 Gauge block with E-field probe



## 7. Test Equipment List

| Manufacturer  | Name of Equipment            | Type/Model | Serial Number | Calibration |            |
|---------------|------------------------------|------------|---------------|-------------|------------|
|               |                              |            |               | Last Cal.   | Due Date   |
| SPEAG         | Isotropic E-Field Probe      | ER3DV6     | 2344          | 2020.06.23  | 2021.06.22 |
| SPEAG         | Audio Holder                 | N/A        | 1094          | NCR         | NCR        |
| SPEAG         | 835MHz Calibration Dipole    | CD835V3    | 1113          | 2018.10.23  | 2021.10.22 |
| SPEAG         | 1880MHz Calibration Dipole   | CD1880V3   | 1111          | 2018.10.23  | 2021.10.22 |
| SPEAG         | 2300MHz Calibration Dipole   | CD2300V3   | 7483          | 2020.10.23  | 2023.10.22 |
| SPEAG         | 2600MHz Calibration Dipole   | CD2600V3   | 1010          | 2018.10.23  | 2021.10.22 |
| SPEAG         | Data Acquisition Electronics | DAE4       | 480           | 2020.06.03  | 2021.06.02 |
| R&S           | Base Station                 | CMU200     | 107082        | 2020.10.19  | 2021.10.18 |
| R&S           | Network Emulator             | CMW500     | 124534        | 2020.10.28  | 2021.10.27 |
| Agilent       | Signal Generator             | N5182B     | MY53050509    | 2020.10.19  | 2021.10.18 |
| Agilent       | Power Sensor                 | N8482A     | MY41090849    | 2020.10.20  | 2021.10.19 |
| Agilent       | Power Meter                  | E4416A     | MY45102093    | 2020.10.20  | 2021.10.19 |
| Anritsu       | Power Sensor                 | MA2411B    | N/A           | 2020.10.20  | 2021.10.19 |
| Anritsu       | Power Meter                  | NRVD       | 101066        | 2020.10.20  | 2021.10.19 |
| mini-circuits | Amplifier                    | ZHL-42W+   | 608501717     | NCR         | NCR        |
| Agilent       | Dual Directional Coupler     | 778D       | 50422         | NA          | NA         |

## 8. System Validation

According to ANSI C63.19, before hearing aid testing commences, the experimental setup shall be validated. Sub clauses 6.3.1 through 6.3.5 include a set of pretest procedures designed to validate the experimental setup to ensure the accuracy of the results. To verify that the hearing aid performs per the manufacturer's specifications, 6.3.5 advises that the hearing aid be pretested per ANSI S3.22.

### 8.1. Test setup

1. In the simplified setup for system evaluation, the EUT is replaced by a calibrated dipole and the power source is replaced by a continuous wave which comes from a signal generator.
2. Position the E-field probe at a 15 mm distance from the top surface of the dipole, which is also fixed in an appropriate fixture.
3. Make sure that the desired measuring channel of the probe is aligned for maximum reception of the E-field generated by the dipole. This may be accomplished by rotating the probe until the maximum value is located. The E-field probe shall have been calibrated over the frequency range to be measured using standard calibration techniques.
4. Adjust the power level (20dBm  $\rightarrow$  100mW) of the signal generator at the initial starting frequency such that the desired E-field strength at the 15 mm distance from the tip of the dipole is achieved. Setting the field strength to be in the range of category M2 is advised.
5. Step the frequency in increments of  $\leq 1\%$ , adjusting the power fed into the dipole such that the desired E-field strength is maintained.

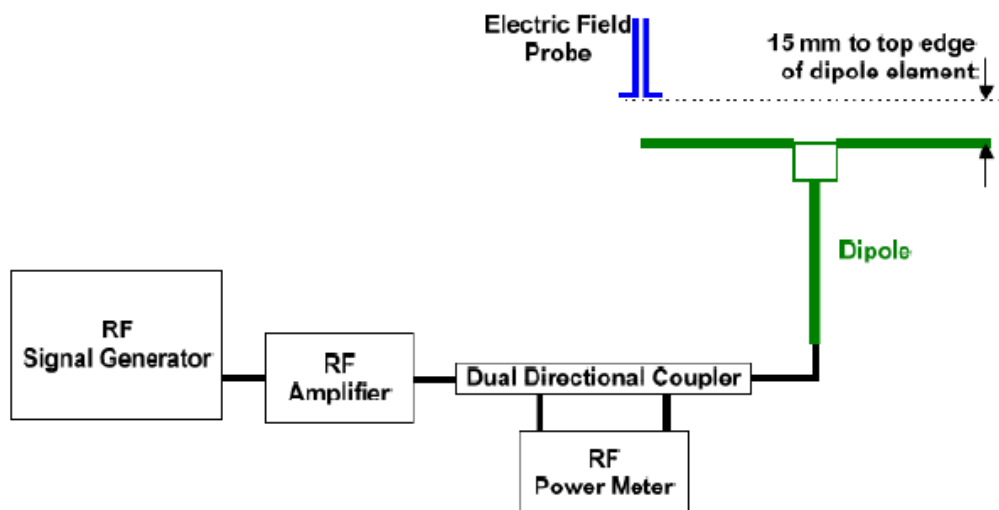


Fig 8.1 WD dipole calibration procedure

## 8.2. Validation Result

After testing, record the frequency and signal generator setting at each frequency for use during the actual immunity test. Comparing to the original E-field value provided by SPEAG, the verification data should be within its specification of 25 %. Table 6.1 shows the target value and measured value. The table below indicates the system performance check can meet the variation criterion and the plots can be referred to annex A of this report. Deviation = ((Average E-field Value) - (Target value)) / (Target value) \* 100%

| Fre. (MHz) | Input Power (mW) | Target Value (V/m) | E-Field above high end (V/m) | E-Field above low end (V/m) | Average Value (V/m) | Deviation (%) | Limit (%) | Date       |
|------------|------------------|--------------------|------------------------------|-----------------------------|---------------------|---------------|-----------|------------|
| 835        | 100              | 110.8              | 120.92                       | 120.5                       | 120.71              | 8.94          | ±12.8     | 2021.03.12 |
| 1880       | 100              | 89.5               | 97.05                        | 95.83                       | 96.44               | 7.75          | ±12.8     | 2021.03.12 |
| 2300       | 100              | 72.7               | 81.7                         | 78.7                        | 80.2                | 10.32         | ±12.8     | 2021.03.12 |
| 2600       | 100              | 86.8               | 94.51                        | 91.94                       | 93.225              | 7.40          | ±12.8     | 2021.03.12 |



## 9. Modulation Interference Factor

The HAC Standard ANSI C63.19-2011 defines a new scaling using the Modulation Interference Factor (MIF). For any specific fixed and repeatable modulated signal, a modulation interference factor (MIF, expressed in dB) may be developed that relates its interference potential to its steady-state rms signal level or average power level.

This factor is a function only of the audio-frequency amplitude modulation characteristics of the signal and is the same for field-strength and conducted power measurements. It is important to emphasize that the MIF is valid only for a specific repeatable audio-frequency amplitude modulation characteristic. Any change in modulation characteristic requires determination and application of a new MIF.

The Modulation Interference factor (MIF, in dB) is added to the measured average E-field (in dBV/m) and converts it to the RF Audio Interference level (in dBV/m). This level considers the audible amplitude modulation components in the RF E-field. CW fields without amplitude modulation are assumed to not interfere with the hearing aid electronics. Modulations without time slots and low fluctuations at low frequencies have low MIF values, TDMA modulations with narrow transmission and repetition rates of few 100 Hz have high MIF values and give similar classifications as ANSI C63.19-2011. ER3D, EF3D and EU2D E-field probes have a bandwidth <10 kHz and can therefore not evaluate the RF envelope in the full audio band. DASY52 is therefore using the indirect measurement method according to ANSI C63.19-2011 which is the primary method. These near field probes read the averaged E-field measurement. Especially for the new high peak-to-average (PAR) signal types, the probes shall be linearized by PMR calibration in order to not overestimate the field reading. Probe Modulation Response (PMR) calibration linearizes the probe response over its dynamic range for specific modulations which are characterized by their UID and result in an uncertainty specified in the probe calibration certificate. The MIF is characteristic for a given waveform envelope and can be used as a constant conversion factor if the probe has been PMR calibrated. The evaluation method for the MIF is defined in ANSI C63.19-2011 section D.7. An RMS demodulated RF signal is fed to a spectral filter (similar to an A weighting filter) and forwarded to a temporal filter acting as a quasi-peak detector. The averaged output of these filtering is scaled to a 1 kHz 80% AM signal as reference. MIF measurement requires additional instrumentation and is not well suited for evaluation by the end user with reasonable uncertainty. It may alternatively be determined through analysis and simulation, because it is constant and characteristic for a communication signal. DASY52 uses well-defined signals for PMR calibration. The MIF of these signals has been determined by simulation and it is automatically applied. The MIF measurement uncertainty is estimated as follows, declared by HAC equipment provider SPEAG, for modulation frequencies from slotted waveforms with fundamental frequency and at least 2 harmonics within 10 kHz:



|                |                 |              |
|----------------|-----------------|--------------|
| 0.2 dB for MIF | 0.5 dB for MIF  | 1 dB for MIF |
| -7dB to +5 dB  | -13dB to +11 dB | > -20 dB     |

MIF values applied in this test report were provided by the HAC equipment provider of SPEAG, and the worst values for all air interface are listed below to be determine the Low-power Exemption.

| UID   | Communication System Name                         | MIF(dB) |
|-------|---------------------------------------------------|---------|
| 10021 | GSM-FDD(TDMA,GMSK)                                | 3.63    |
| 10025 | EDGE-FDD (TDMA, 8PSK, TN 0)                       | 3.75    |
| 10460 | UMTS-FDD(WCDMA, AMR)                              | -25.43  |
| 10225 | UMTS-FDD (HSPA+)                                  | -20.39  |
| 10081 | CDMA2000 (1xRTT, RC3 Full Rate)                   | -19.71  |
| 10295 | CDMA2000 (1xRTT, RC1 SO3, 1/8th Rate 25 fr.)      | 3.26    |
| 10403 | CDMA2000 (1xEV-DO)                                | -17.67  |
| 10169 | LTE-FDD(SC-FDMA,1RB,20MHz,QPSK)                   | -15.63  |
| 10170 | LTE-FDD(SC-FDMA,1RB,20MHz,16-QAM)                 | -9.76   |
| 10179 | LTE-FDD(SC-FDMA,1RB,20MHz,64-QAM)                 | -9.93   |
| 10181 | LTE-FDD(SC-FDMA,1RB,15MHz,QPSK)                   | -15.63  |
| 10175 | LTE-FDD(SC-FDMA,1RB,10MHz,QPSK)                   | -15.63  |
| 10177 | LTE-FDD(SC-FDMA,1RB,5MHz,QPSK)                    | -15.63  |
| 10184 | LTE-FDD(SC-FDMA,1RB,3MHz,QPSK)                    | -15.62  |
| 10187 | LTE-FDD(SC-FDMA,1RB,1.4MHz,QPSK)                  | -15.62  |
| 10172 | LTE-TDD (SC-FDMA, 1 RB, 20 MHz, QPSK)             | -1.62   |
| 10173 | LTE-TDD (SC-FDMA, 1 RB, 20 MHz, 16-QAM)           | -1.44   |
| 10174 | LTE-TDD (SC-FDMA, 1 RB, 20 MHz, 64-QAM)           | -1.54   |
| 10240 | LTE-TDD (SC-FDMA, 1 RB, 15 MHz, QPSK)             | -1.62   |
| 10237 | LTE-TDD (SC-FDMA, 1 RB, 10 MHz, QPSK)             | -1.62   |
| 10234 | LTE-TDD (SC-FDMA, 1 RB, 5 MHz, QPSK)              | -1.62   |
| 10231 | LTE-TDD (SC-FDMA, 1 RB, 3 MHz, QPSK)              | -1.62   |
| 10228 | LTE-TDD (SC-FDMA, 1 RB, 1.4 MHz, QPSK)            | -1.62   |
| 10061 | IEEE 802.11b WiFi 2.4 GHz (DSSS, 11 Mbps)         | -2.02   |
| 10077 | IEEE 802.11g WiFi 2.4 GHz (DSSS/OFDM, 54 Mbps)    | 0.12    |
| 10427 | IEEE 802.11n (HT Greeneld, 150 Mbps, 64-QAM)      | -13.44  |
| 10069 | IEEE 802.11a/n WiFi 5 GHz (OFDM, 54 Mbps)         | -3.15   |
| 10616 | IEEE 802.11ac WiFi (40MHz, MCS0, 90pc duty cycle) | -5.57   |



# 10. Conducted Power

## 10.1. Full Power

### > GSM Conducted Power

| GSM850                | Burst Average Power (dBm) |       |       | Frame-Average Power (dBm) |       |       |
|-----------------------|---------------------------|-------|-------|---------------------------|-------|-------|
| TX Channel            | 128                       | 189   | 251   | 128                       | 189   | 251   |
| Frequency (MHz)       | 824.2                     | 836.4 | 848.8 | 824.2                     | 836.4 | 848.8 |
| GSM (GMSK, 1 Tx slot) | 32.71                     | 32.83 | 32.77 | 23.71                     | 23.83 | 23.77 |

| GSM1900               | Burst Average Power (dBm) |       |        | Frame-Average Power (dBm) |       |        |
|-----------------------|---------------------------|-------|--------|---------------------------|-------|--------|
| TX Channel            | 512                       | 661   | 810    | 512                       | 661   | 810    |
| Frequency (MHz)       | 1850.2                    | 1880  | 1909.8 | 1850.2                    | 1880  | 1909.8 |
| GSM (GMSK, 1 Tx slot) | 30.32                     | 30.51 | 30.42  | 21.32                     | 21.51 | 21.42  |

### > CDMA Conducted Power

| Band                      | CDMA2000 BC0 |        |        | Tune-up Limit (dBm) |
|---------------------------|--------------|--------|--------|---------------------|
| TX Channel                | 1013         | 384    | 777    |                     |
| Frequency (MHz)           | 824.7        | 836.52 | 848.31 |                     |
| 1xRTT RC1 SO3, 1/8th Rate | 23.02        | 23.01  | 23.12  | 23.50               |

| Band                      | CDMA2000 BC1 |       |         | Tune-up Limit (dBm) |
|---------------------------|--------------|-------|---------|---------------------|
| TX Channel                | 25           | 600   | 1175    |                     |
| Frequency (MHz)           | 1851.25      | 1880  | 1908.75 |                     |
| 1xRTT RC1 SO3, 1/8th Rate | 22.88        | 22.95 | 22.85   | 23.50               |

### > LTE Conducted Power

#### <TDD-LTE Band 38>

| BW [MHz]        | Modulation | RB Size | RB Offset | Low channel | Middle channel | High channel | Tune-up limit (dBm) |
|-----------------|------------|---------|-----------|-------------|----------------|--------------|---------------------|
| Channel         |            |         |           | 37850       | 38000          | 38150        |                     |
| Frequency (MHz) |            |         |           | 2580        | 2595           | 2610         |                     |
| 20              | QPSK       | 1       | 0         | 22.61       | 22.77          | 22.72        | 23.50               |
| 20              | QPSK       | 1       | 49        | 22.60       | 22.67          | 22.65        |                     |
| 20              | QPSK       | 1       | 99        | 22.56       | 22.54          | 22.54        |                     |
| 20              | QPSK       | 50      | 0         | 21.48       | 21.54          | 21.41        | 22.50               |



|    |      |     |    |       |       |       |  |
|----|------|-----|----|-------|-------|-------|--|
| 20 | QPSK | 50  | 24 | 21.44 | 21.51 | 21.51 |  |
| 20 | QPSK | 50  | 50 | 21.51 | 21.36 | 21.35 |  |
| 20 | QPSK | 100 | 0  | 21.48 | 21.58 | 21.54 |  |

**<TDD-LTE Band 40A>**

| BW [MHz]        | Modulation | RB Size | RB Offset | Low channel | Middle channel | High channel | Tune-up limit (dBm) |
|-----------------|------------|---------|-----------|-------------|----------------|--------------|---------------------|
| Channel         |            |         |           | 38750       |                |              |                     |
| Frequency (MHz) |            |         |           | 2310        |                |              |                     |
| 10              | QPSK       | 1       | 0         | 22.79       |                |              | 23.50               |
| 10              | QPSK       | 1       | 25        | 22.73       |                |              |                     |
| 10              | QPSK       | 1       | 49        | 22.55       |                |              |                     |
| 10              | QPSK       | 25      | 0         | 21.91       |                |              | 22.50               |
| 10              | QPSK       | 25      | 12        | 21.81       |                |              |                     |
| 10              | QPSK       | 25      | 25        | 21.82       |                |              |                     |
| 10              | QPSK       | 50      | 0         | 21.84       |                |              |                     |

**<TDD-LTE Band 40B>**

| BW [MHz]        | Modulation | RB Size | RB Offset | Low channel | Middle channel | High channel | Tune-up limit (dBm) |
|-----------------|------------|---------|-----------|-------------|----------------|--------------|---------------------|
| Channel         |            |         |           | 39200       |                |              |                     |
| Frequency (MHz) |            |         |           | 2355        |                |              |                     |
| 10              | QPSK       | 1       | 0         | 22.75       |                |              | 23.50               |
| 10              | QPSK       | 1       | 25        | 22.66       |                |              |                     |
| 10              | QPSK       | 1       | 49        | 22.69       |                |              |                     |
| 10              | QPSK       | 25      | 0         | 21.88       |                |              | 22.50               |
| 10              | QPSK       | 25      | 12        | 21.85       |                |              |                     |
| 10              | QPSK       | 25      | 25        | 21.77       |                |              |                     |
| 10              | QPSK       | 50      | 0         | 21.85       |                |              |                     |





## 10.2. Reduced Power

### > GSM Conducted Power

| GSM850               | Burst Average Power (dBm) |       |       | Frame-Average Power (dBm) |       |       |
|----------------------|---------------------------|-------|-------|---------------------------|-------|-------|
| TX Channel           | 128                       | 189   | 251   | 128                       | 189   | 251   |
| Frequency (MHz)      | 824.2                     | 836.4 | 848.8 | 824.2                     | 836.4 | 848.8 |
| GSM (GMSK,1 Tx slot) | 25.66                     | 25.20 | 25.60 | 16.66                     | 16.20 | 16.60 |

| GSM1900              | Burst Average Power (dBm) |       |        | Frame-Average Power (dBm) |       |        |
|----------------------|---------------------------|-------|--------|---------------------------|-------|--------|
| TX Channel           | 512                       | 661   | 810    | 512                       | 661   | 810    |
| Frequency (MHz)      | 1850.2                    | 1880  | 1909.8 | 1850.2                    | 1880  | 1909.8 |
| GSM (GMSK,1 Tx slot) | 23.87                     | 23.81 | 23.76  | 14.87                     | 14.81 | 14.76  |

### > CDMA Conducted Power

| Band                     | CDMA2000 BC0 |        |        | Tune-up Limit (dBm) |
|--------------------------|--------------|--------|--------|---------------------|
| TX Channel               | 1013         | 384    | 777    |                     |
| Frequency (MHz)          | 824.7        | 836.52 | 848.31 |                     |
| 1xRTT RC1 SO3,1/8th Rate | 17.79        | 17.81  | 17.51  |                     |

| Band                     | CDMA2000 BC1 |       |         | Tune-up Limit (dBm) |
|--------------------------|--------------|-------|---------|---------------------|
| TX Channel               | 25           | 600   | 1175    |                     |
| Frequency (MHz)          | 1851.25      | 1880  | 1908.75 |                     |
| 1xRTT RC1 SO3,1/8th Rate | 15.35        | 15.76 | 15.39   |                     |

### > LTE Conducted Power

#### <TDD-LTE Band 38>

| BW [MHz]        | Modulation | RB Size | RB Offset | Low channel | Middle channel | High channel | Tune-up limit (dBm) |
|-----------------|------------|---------|-----------|-------------|----------------|--------------|---------------------|
| Channel         |            |         |           | 37850       | 38000          | 38150        |                     |
| Frequency (MHz) |            |         |           | 2580        | 2595           | 2610         |                     |
| 20              | QPSK       | 1       | 0         | 15.57       | 15.58          | 15.36        | 16.00               |
| 20              | QPSK       | 1       | 49        | 15.54       | 15.48          | 15.44        |                     |
| 20              | QPSK       | 1       | 99        | 15.43       | 15.38          | 15.51        |                     |
| 20              | QPSK       | 50      | 0         | 14.64       | 14.75          | 14.59        | 15.00               |
| 20              | QPSK       | 50      | 24        | 14.71       | 14.65          | 14.65        |                     |
| 20              | QPSK       | 50      | 50        | 14.73       | 14.66          | 14.63        |                     |
| 20              | QPSK       | 100     | 0         | 14.75       | 14.71          | 14.68        |                     |



**<TDD-LTE Band 40A>**

| BW [MHz]        | Modulation | RB Size | RB Offset | Low channel | Middle channel | High channel | Tune-up limit (dBm) |
|-----------------|------------|---------|-----------|-------------|----------------|--------------|---------------------|
| Channel         |            |         |           | 38750       |                |              |                     |
| Frequency (MHz) |            |         |           | 2310        |                |              |                     |
| 10              | QPSK       | 1       | 0         | 15.62       |                |              | 16.00               |
| 10              | QPSK       | 1       | 25        | 15.40       |                |              |                     |
| 10              | QPSK       | 1       | 49        | 15.27       |                |              |                     |
| 10              | QPSK       | 25      | 0         | 14.78       |                |              | 15.00               |
| 10              | QPSK       | 25      | 12        | 14.69       |                |              |                     |
| 10              | QPSK       | 25      | 25        | 14.66       |                |              |                     |
| 10              | QPSK       | 50      | 0         | 14.76       |                |              |                     |

**<TDD-LTE Band 40B>**

| BW [MHz]        | Modulation | RB Size | RB Offset | Low channel | Middle channel | High channel | Tune-up limit (dBm) |
|-----------------|------------|---------|-----------|-------------|----------------|--------------|---------------------|
| Channel         |            |         |           | 39200       |                |              |                     |
| Frequency (MHz) |            |         |           | 2355        |                |              |                     |
| 10              | QPSK       | 1       | 0         | 15.58       |                |              | 16.00               |
| 10              | QPSK       | 1       | 25        | 15.49       |                |              |                     |
| 10              | QPSK       | 1       | 49        | 15.49       |                |              |                     |
| 10              | QPSK       | 25      | 0         | 14.77       |                |              | 15.00               |
| 10              | QPSK       | 25      | 12        | 14.74       |                |              |                     |
| 10              | QPSK       | 25      | 25        | 14.62       |                |              |                     |
| 10              | QPSK       | 50      | 0         | 14.69       |                |              |                     |

**Note:**

The EUT respectively defined the top and bottom antenna maximum output power in the software and the default antenna including TX & RX is the bottom antenna. The top and bottom antenna will switch automatically according to the receiver signal strength and maximum transmission power level.



## 11. Low-power Exemption

| Air Interface             | Max Tune-up Limit (dBm) | Worst Case MIF (dB) | Power + MIF(dB) | C63.19 Test Required |
|---------------------------|-------------------------|---------------------|-----------------|----------------------|
| GSM 850                   | 33.50                   | 3.63                | 37.13           | Yes                  |
| GSM 1900                  | 31.50                   | 3.63                | 35.13           | Yes                  |
| EDGE 850                  | 26.50                   | 3.75                | 30.25           | Yes                  |
| EDGE 1900                 | 22.50                   | 3.75                | 26.25           | Yes                  |
| WCDMA II                  | 24.00                   | -25.43              | -1.43           | No                   |
| WCDMA IV                  | 24.00                   | -25.43              | -1.43           | No                   |
| WCDMA V                   | 24.00                   | -25.43              | -1.43           | No                   |
| CDMA BC0 Full Rate        | 24.00                   | -19.71              | 4.29            | No                   |
| CDMA BC0 1/8th Frame Rate | 23.50                   | 3.26                | 26.76           | Yes                  |
| BC0 EVDO                  | 24.00                   | -17.67              | 6.33            | No                   |
| CDMA BC1 Full Rate        | 24.00                   | -19.71              | 4.29            | No                   |
| CDMA BC1 1/8th Frame Rate | 23.50                   | 3.26                | 26.76           | Yes                  |
| BC0 EVDO                  | 24.00                   | -17.67              | 6.33            | No                   |
| LTE Band 2                | 23.50                   | -15.63              | 7.87            | No                   |
| LTE Band 4                | 23.00                   | -15.63              | 7.37            | No                   |
| LTE Band 5                | 24.00                   | -15.63              | 8.37            | No                   |
| LTE Band 7                | 23.00                   | -15.63              | 7.37            | No                   |
| LTE Band 12               | 24.00                   | -15.63              | 8.37            | No                   |
| LTE Band 17               | 24.00                   | -15.63              | 8.37            | No                   |
| LTE Band 18               | 24.00                   | -15.63              | 8.37            | No                   |
| LTE Band 19               | 24.00                   | -15.63              | 8.37            | No                   |
| LTE Band 26               | 23.50                   | -15.63              | 7.87            | No                   |
| LTE Band 38               | 23.50                   | -1.62               | 21.88           | Yes                  |
| LTE Band 40A              | 23.50                   | -1.62               | 21.88           | Yes                  |
| LTE Band 40B              | 23.50                   | -1.62               | 21.88           | Yes                  |
| LTE Band 66               | 23.50                   | -15.63              | 7.87            | No                   |

**Note:**

1. According to ANSI C63.19 2011-version, for the air interface technology of a device is exempt from testing when its average antenna input power plus its MIF is  $\leq 17$  dBm for any of its operating modes.
2. For all of bands, the worst case of maximum tune-up limit will be test RF emission, therefore WCDMA and FDD-LTE mode is not necessary for testing.
3. For GSM mode, only GSM voice will be tested for the low power exemption of EDGE is less than Voice mode.



4. HAC RF rating is M4 for the air interface which meets the low power exemption.
5. The power reduction is lower than the full power, so please use the full power for the exemption evaluation.

## 12. Summary Test Results

### > Top Antenna

| Plot No. | Air Interface | Mode                       | Channel | MIF   | E-Field (dBV/m) | Margin to FCC M3 limit (dB) | E-Field M Rating |
|----------|---------------|----------------------------|---------|-------|-----------------|-----------------------------|------------------|
| 1        | GSM850        | GSM Voice                  | 128     | 3.63  | 37.75           | 7.25                        | M4               |
| 2        | GSM850        | GSM Voice                  | 189     | 3.63  | 38.08           | 6.92                        | M4               |
| 3        | GSM850        | GSM Voice                  | 251     | 3.63  | 37.96           | 7.04                        | M4               |
| 4        | GSM1900       | GSM Voice                  | 512     | 3.63  | 31.41           | 3.59                        | M3               |
| 5        | GSM1900       | GSM Voice                  | 661     | 3.63  | 31.81           | 3.19                        | M3               |
| 6        | GSM1900       | GSM Voice                  | 810     | 3.63  | 31.64           | 3.36                        | M3               |
| 7        | CDMA BC0      | 1xRTT, RC1 SO3, 1/8th Rate | 1013    | 3.63  | 15.33           | 29.67                       | M4               |
| 8        | CDMA BC0      | 1xRTT, RC1 SO3, 1/8th Rate | 384     | 3.63  | 14.87           | 30.13                       | M4               |
| 9        | CDMA BC0      | 1xRTT, RC1 SO3, 1/8th Rate | 777     | 3.63  | 14.87           | 30.13                       | M4               |
| 10       | CDMA BC1      | 1xRTT, RC1 SO3, 1/8th Rate | 25      | 3.63  | 14.73           | 20.27                       | M4               |
| 11       | CDMA BC1      | 1xRTT, RC1 SO3, 1/8th Rate | 600     | 3.63  | 14.85           | 20.15                       | M4               |
| 12       | CDMA BC1      | 1xRTT, RC1 SO3, 1/8th Rate | 1175    | 3.63  | 15.15           | 19.85                       | M4               |
| 13       | LTE Band 38   | QPSK/1RB#0/20MHz           | 37850   | -1.62 | 27.22           | 7.78                        | M4               |
| 14       | LTE Band 38   | QPSK/1RB#0/20MHz           | 38000   | -1.62 | 27.12           | 7.88                        | M4               |
| 15       | LTE Band 38   | QPSK/1RB#0/20MHz           | 38150   | -1.62 | 26.95           | 8.05                        | M4               |
| 16       | LTE Band 40A  | QPSK/1RB#0/10MHz           | 38750   | -1.62 | 26.94           | 8.06                        | M4               |
| 17       | LTE Band 40B  | QPSK/1RB#0/10MHz           | 39200   | -1.62 | 27.36           | 7.64                        | M4               |

➤ **Bottom Antenna**

| Plot No. | Air Interface | Mode                       | Channel | MIF   | E-Field (dBV/m) | Margin to FCC M3 limit (dB) | E-Field M Rating |
|----------|---------------|----------------------------|---------|-------|-----------------|-----------------------------|------------------|
| 1        | GSM850        | GSM Voice                  | 128     | 3.63  | 33.03           | 11.97                       | M4               |
| 2        | GSM850        | GSM Voice                  | 189     | 3.63  | 34.26           | 10.74                       | M4               |
| 3        | GSM850        | GSM Voice                  | 251     | 3.63  | 34.29           | 10.71                       | M4               |
| 4        | GSM1900       | GSM Voice                  | 512     | 3.63  | 28.24           | 6.76                        | M4               |
| 5        | GSM1900       | GSM Voice                  | 661     | 3.63  | 28.77           | 6.23                        | M4               |
| 6        | GSM1900       | GSM Voice                  | 810     | 3.63  | 27.96           | 7.04                        | M4               |
| 7        | CDMA BC0      | 1xRTT, RC1 SO3, 1/8th Rate | 1013    | 3.63  | 14.77           | 30.23                       | M4               |
| 8        | CDMA BC0      | 1xRTT, RC1 SO3, 1/8th Rate | 384     | 3.63  | 14.72           | 30.28                       | M4               |
| 9        | CDMA BC0      | 1xRTT, RC1 SO3, 1/8th Rate | 777     | 3.63  | 14.81           | 30.19                       | M4               |
| 10       | CDMA BC1      | 1xRTT, RC1 SO3, 1/8th Rate | 25      | 3.63  | 14.92           | 20.08                       | M4               |
| 11       | CDMA BC1      | 1xRTT, RC1 SO3, 1/8th Rate | 600     | 3.63  | 15.52           | 19.48                       | M4               |
| 12       | CDMA BC1      | 1xRTT, RC1 SO3, 1/8th Rate | 1175    | 3.63  | 15.83           | 19.17                       | M4               |
| 13       | LTE Band 38   | QPSK/1RB#0/20MHz           | 37850   | -1.62 | 18.23           | 16.77                       | M4               |
| 14       | LTE Band 38   | QPSK/1RB#0/20MHz           | 38000   | -1.62 | 19.08           | 15.92                       | M4               |
| 15       | LTE Band 38   | QPSK/1RB#0/20MHz           | 38150   | -1.62 | 19.73           | 15.27                       | M4               |
| 16       | LTE Band 40A  | QPSK/1RB#0/10MHz           | 38750   | -1.62 | 17.18           | 17.82                       | M4               |
| 17       | LTE Band 40B  | QPSK/1RB#0/10MHz           | 39200   | -1.62 | 17.66           | 17.34                       | M4               |

**Remark:**

1. Phone condition: HAC Air on, Backlight off, maximum volume.
2. Test Engineer: Liang Yumei



## 13. Uncertainty Assessment

The component of uncertainty may generally be categorized according to the methods used to evaluate them. The evaluation of uncertainty by the statistical analysis of a series of observations is termed a Type A evaluation of uncertainty. The evaluation of uncertainty by means other than the statistical analysis of a series of observations is termed a Type B evaluation of uncertainty. Each component of uncertainty, however evaluated, is represented by an estimated standard deviation, termed standard uncertainty, which is determined by the positive square root of the estimated variance.

The combined standard uncertainty of the measurement result represents the estimated standard deviation of the result. It is obtained by combining the individual standard uncertainties of both Type A and Type B evaluation using the usual "root-sum-squares" (RSS) methods of combining standard deviations by taking the positive square root of the estimated variances. Expanded uncertainty is a measure of uncertainty that defines an interval about the measurement result within which the measured value is confidently believed to lie. It is obtained by multiplying the combined standard uncertainty by a coverage factor. For purpose of this document, a coverage factor two is used, which corresponds to confidence interval of about 95 %. The DASY uncertainty Budget is shown in Table 12.1.



## Annex A General Information

### 1. Identification of the Responsible Testing Laboratory

|                     |                                                                                                                                  |
|---------------------|----------------------------------------------------------------------------------------------------------------------------------|
| Laboratory Name:    | Shenzhen Morlab Communications Technology Co., Ltd.Morlab Laboratory                                                             |
| Laboratory Address: | FL.3, Building A, FeiYang Science Park, No.8 LongChang Road, Block 67, BaoAn District, ShenZhen, GuangDong Province, P. R. China |
| Telephone:          | +86 755 36698555                                                                                                                 |
| Facsimile:          | +86 755 36698525                                                                                                                 |

### 2. Identification of the Responsible Testing Location

|          |                                                                                                                                  |
|----------|----------------------------------------------------------------------------------------------------------------------------------|
| Name:    | Shenzhen Morlab Communications Technology Co., Ltd. Morlab Laboratory                                                            |
| Address: | FL.3, Building A, FeiYang Science Park, No.8 LongChang Road, Block 67, BaoAn District, ShenZhen, GuangDong Province, P. R. China |

**Note:**

The main report is end here and the other annex (B,C,D,E) will be submitted separately.

\*\*\*\*\* END OF MAIN REPORT \*\*\*\*\*