



REPORT No. : SZ19070119S01

Annex C Plots of System Performance Check

System Check_750MHz_Head_190902

Communication System: UID 0, CW (0); Frequency: 750 MHz; Duty Cycle: 1:1

Medium: HSL_750 Medium parameters used: $f = 750 \text{ MHz}$; $\sigma = 0.882 \text{ S/m}$; $\epsilon_r = 41.200$; $\rho = 1000 \text{ kg/m}^3$

Ambient Temperature : 23.1 °C; Liquid Temperature : 22.6 °C

DASY5 Configuration:

- Probe: ES3DV3 - SN3154; ConvF(6.34, 6.34, 6.34); Calibrated: 2019.07.16;
- Sensor-Surface: 4mm (Mechanical Surface Detection)
- Electronics: DAE4 Sn480; Calibrated: 2019.04.11
- Phantom: SAM 2; Type: QD000P40CC; Serial: TP:1464
- Measurement SW: DASY52, Version 52.8 (8); SEMCAD X Version 14.6.10 (7331)

CW 750/Area Scan (81x81x1): Interpolated grid: $dx=1.500 \text{ mm}$, $dy=1.500 \text{ mm}$

Maximum value of SAR (interpolated) = 2.37 W/kg

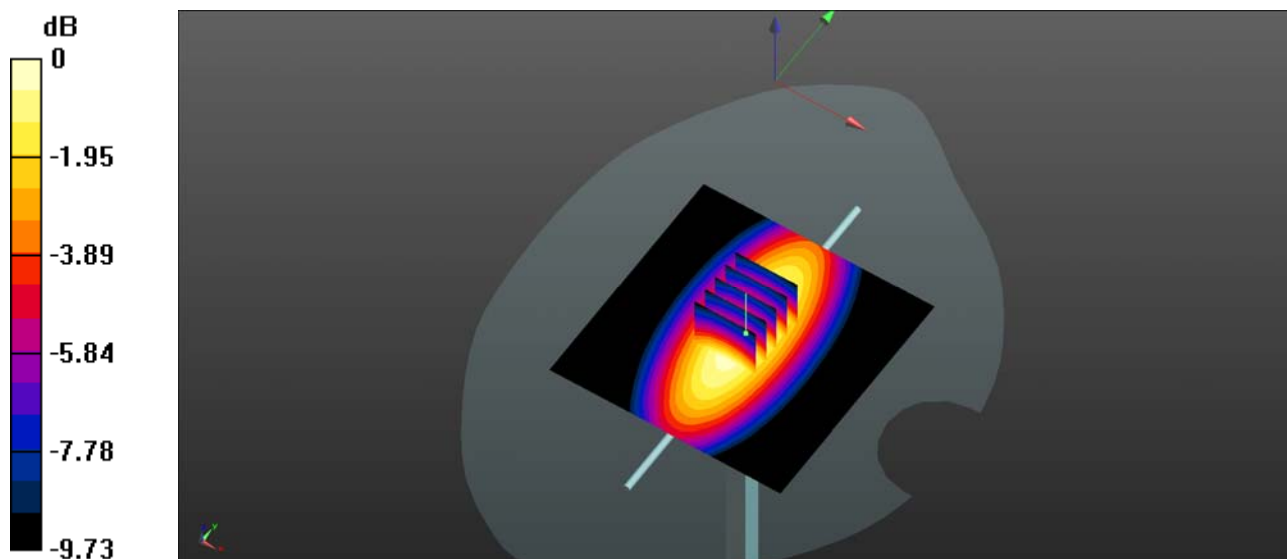
CW 750/Zoom Scan (5x5x7)/Cube 0: Measurement grid: $dx=8\text{mm}$, $dy=8\text{mm}$, $dz=5\text{mm}$

Reference Value = 49.15 V/m; Power Drift = 0.04 dB

Peak SAR (extrapolated) = 2.82 W/kg

SAR(1 g) = 2.12 W/kg; SAR(10 g) = 1.40 W/kg

Maximum value of SAR (measured) = 2.38 W/kg



0 dB = 2.37 W/kg

System Check_835MHz_Head_190829

Communication System: UID 0, CW (0); Frequency: 835 MHz; Duty Cycle: 1:1

Medium: HSL_835 Medium parameters used: $f = 835 \text{ MHz}$; $\sigma = 0.923 \text{ S/m}$; $\epsilon_r = 42.274$; $\rho = 1000 \text{ kg/m}^3$

Ambient Temperature : 23.4 °C ; Liquid Temperature : 22.7 °C

DASY5 Configuration:

- Probe: EX3DV4 - SN3823; ConvF(9.32, 9.32, 9.32); Calibrated: 2018.11.12;
- Sensor-Surface: 4mm (Mechanical Surface Detection)
- Electronics: DAE4 Sn480; Calibrated: 2019.04.11
- Phantom: SAM 2; Type: QD000P40CC; Serial: TP:1464
- Measurement SW: DASY52, Version 52.8 (8); SEMCAD X Version 14.6.10 (7331)

CW835/Area Scan (81x81x1): Interpolated grid: $dx=1.500 \text{ mm}$, $dy=1.500 \text{ mm}$

Maximum value of SAR (interpolated) = 2.45 W/kg

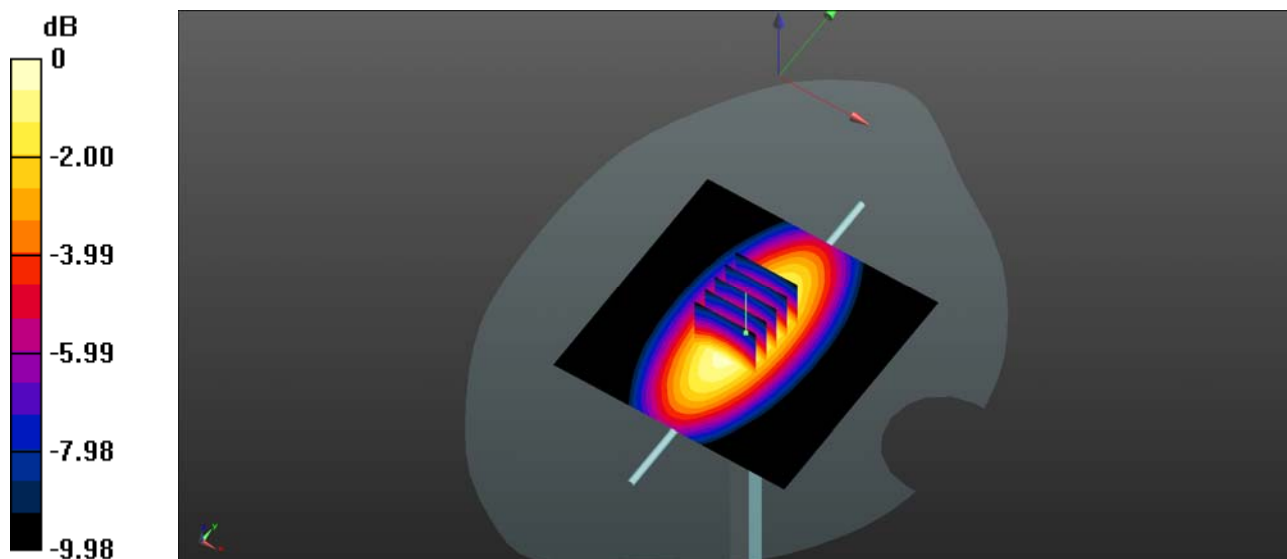
CW835/Zoom Scan (5x5x7)/Cube 0: Measurement grid: $dx=8\text{mm}$, $dy=8\text{mm}$, $dz=5\text{mm}$

Reference Value = 53.72 V/m; Power Drift = -0.14 dB

Peak SAR (extrapolated) = 3.28 W/kg

SAR(1 g) = 2.37 W/kg; SAR(10 g) = 1.51 W/kg

Maximum value of SAR (measured) = 2.43 W/kg



0 dB = 2.43 W/kg

System Check_1750MHz_Head_190831

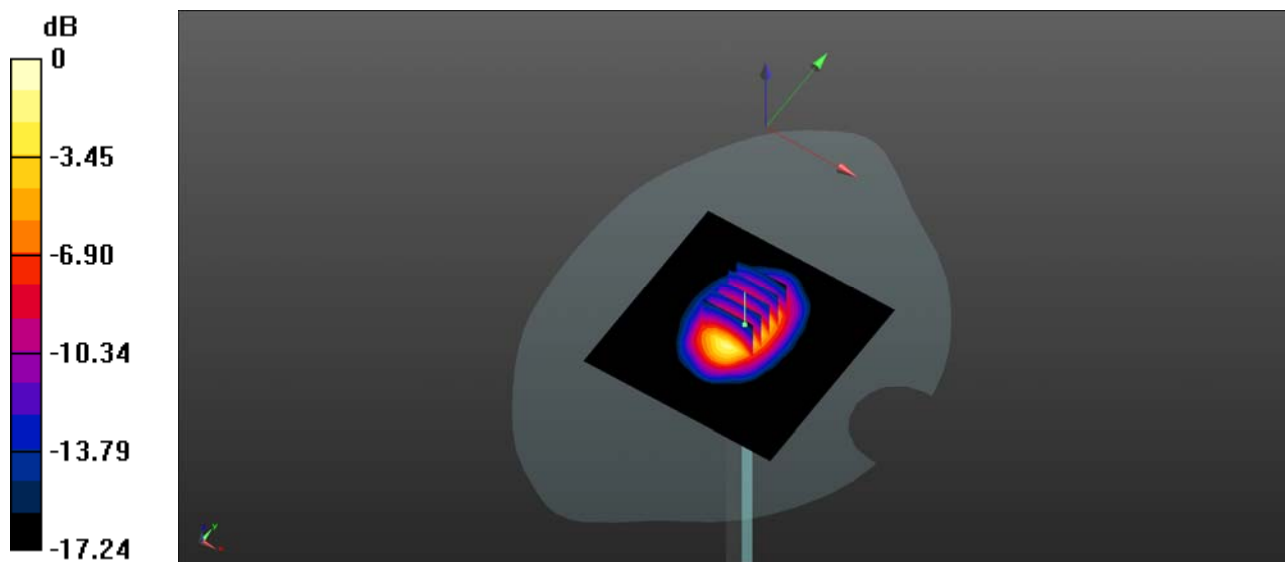
Communication System: UID 0, CW (0); Frequency: 1750 MHz; Duty Cycle: 1:1
 Medium: HSL_1750 Medium parameters used: $f = 1750$ MHz; $\sigma = 1.38$ S/m; $\epsilon_r = 40.594$; $\rho = 1000$ kg/m³
 Ambient Temperature : 23.3 °C; Liquid Temperature : 22.6 °C

DASY5 Configuration:

- Probe: EX3DV4 - SN3823; ConvF(7.98, 7.98, 7.98); Calibrated: 2018.11.12;
- Sensor-Surface: 4mm (Mechanical Surface Detection)
- Electronics: DAE4 Sn480; Calibrated: 2019.04.11
- Phantom: SAM 1; Type: QD000P40CC; Serial: TP:1471
- Measurement SW: DASY52, Version 52.8 (8); SEMCAD X Version 14.6.10 (7331)

CW1750/Area Scan (81x81x1): Interpolated grid: dx=1.500 mm, dy=1.500 mm
 Maximum value of SAR (interpolated) = 10.6 W/kg

CW1750/Zoom Scan (5x5x7)/Cube 0: Measurement grid: dx=8mm, dy=8mm, dz=5mm
 Reference Value = 86.15 V/m; Power Drift = 0.02 dB
 Peak SAR (extrapolated) = 17.1 W/kg
SAR(1 g) = 9.29 W/kg; SAR(10 g) = 4.99 W/kg
 Maximum value of SAR (measured) = 10.3 W/kg



0 dB = 10.3 W/kg

System Check_1900MHz_Head_190914

Communication System: UID 0, CW (0); Frequency: 1900 MHz; Duty Cycle: 1:1

Medium: HSL_1900 Medium parameters used: $f = 1900$ MHz; $\sigma = 1.397$ S/m; $\epsilon_r = 39.984$; $\rho = 1000$ kg/m³

Ambient Temperature : 23.1 °C; Liquid Temperature : 22.4 °C

DASY5 Configuration:

- Probe: EX3DV4 - SN3823; ConvF(7.68, 7.68, 7.68); Calibrated: 2018.11.12;
- Sensor-Surface: 4mm (Mechanical Surface Detection)
- Electronics: DAE4 Sn480; Calibrated: 2019.04.11
- Phantom: SAM 2; Type: QD000P40CC; Serial: TP:1464
- Measurement SW: DASY52, Version 52.8 (8); SEMCAD X Version 14.6.10 (7331)

CW 1900/Area Scan (81x81x1): Interpolated grid: dx=1.500 mm, dy=1.500 mm

Maximum value of SAR (interpolated) = 10.6 W/kg

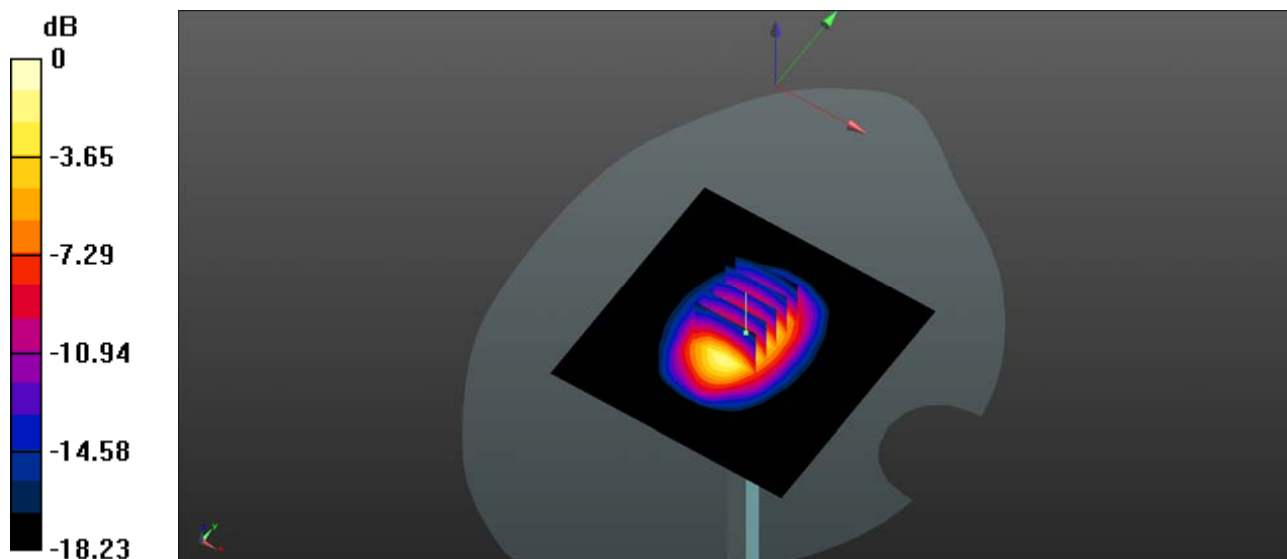
CW 1900/Zoom Scan (5x5x7)/Cube 0: Measurement grid: dx=8mm, dy=8mm, dz=5mm

Reference Value = 86.62 V/m; Power Drift = 0.17 dB

Peak SAR (extrapolated) = 17.5 W/kg

SAR(1 g) = 9.58 W/kg; SAR(10 g) = 5.18 W/kg

Maximum value of SAR (measured) = 10.6 W/kg



0 dB = 10.6 W/kg

System Check_2300MHz_Head_190903

Communication System: UID 0, CW (0); Frequency: 2300 MHz; Duty Cycle: 1:1
Medium: HSL_2300 Medium parameters used: $f = 2300$ MHz; $\sigma = 1.68$ S/m; $\epsilon_r = 40.616$; $\rho = 1000$ kg/m³

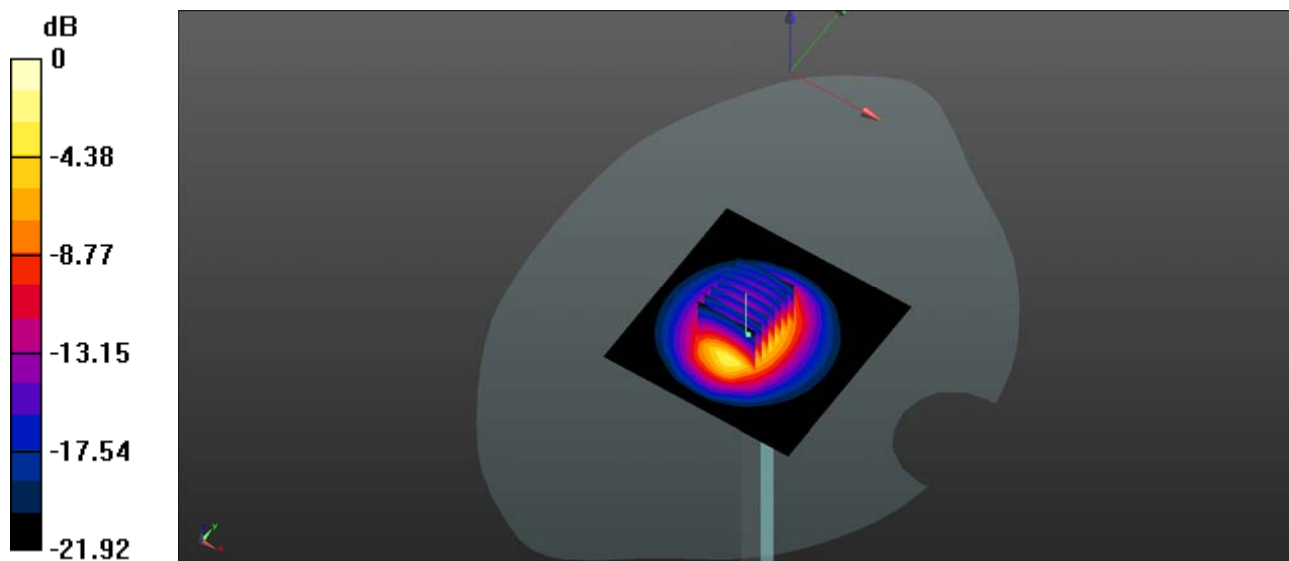
Ambient Temperature : 23.6 °C; Liquid Temperature : 22.4 °C

DASY5 Configuration:

- Probe: EX3DV4 - SN3823; ConvF(7.55, 7.55, 7.55); Calibrated: 2018.11.12;
- Sensor-Surface: 2mm (Mechanical Surface Detection)
- Electronics: DAE4 Sn480; Calibrated: 2019.04.11
- Phantom: SAM 1; Type: QD000P40CC; Serial: TP:1471
- Measurement SW: DASY52, Version 52.8 (8); SEMCAD X Version 14.6.10 (7331)

CW2300/Area Scan (81x81x1): Interpolated grid: dx=1.200 mm, dy=1.200 mm
Maximum value of SAR (interpolated) = 15.9 W/kg

CW2300/Zoom Scan (7x7x7)/Cube 0: Measurement grid: dx=5mm, dy=5mm, dz=5mm
Reference Value = 93.72 V/m; Power Drift = 0.12 dB
Peak SAR (extrapolated) = 22.0 W/kg
SAR(1 g) = 12.4 W/kg; SAR(10 g) = 5.85 W/kg
Maximum value of SAR (measured) = 16.0 W/kg



0 dB = 15.9 W/kg

System Check_2450MHz_Head_190903

Communication System: UID 0, CW (0); Frequency: 2450 MHz; Duty Cycle: 1:1

Medium: HSL_2450 Medium parameters used: $f = 2450$ MHz; $\sigma = 1.751$ S/m; $\epsilon_r = 39.883$; $\rho = 1000$ kg/m³

Ambient Temperature : 23.4 °C; Liquid Temperature : 22.6 °C

DASY5 Configuration:

- Probe: EX3DV4 - SN3823; ConvF(7.34, 7.34, 7.34); Calibrated: 2018.11.12;
- Sensor-Surface: 4mm (Mechanical Surface Detection)
- Electronics: DAE4 Sn480; Calibrated: 2019.04.11
- Phantom: SAM 2; Type: QD000P40CC; Serial: TP:1464
- Measurement SW: DASY52, Version 52.8 (8); SEMCAD X Version 14.6.10 (7331)

CW2450/Area Scan (71x81x1): Interpolated grid: dx=1.200 mm, dy=1.200 mm

Maximum value of SAR (interpolated) = 16.6 W/kg

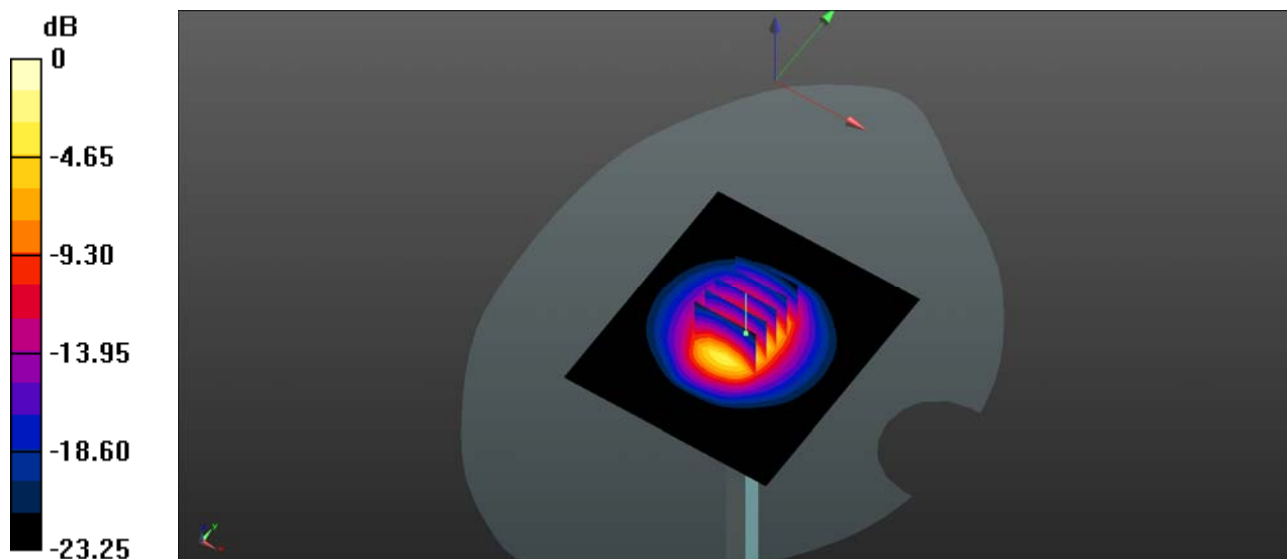
CW2450/Zoom Scan (5x5x7)/Cube 0: Measurement grid: dx=5mm, dy=5mm, dz=5mm

Reference Value = 90.71 V/m; Power Drift = 0.09 dB

Peak SAR (extrapolated) = 28.5 W/kg

SAR(1 g) = 13.22 W/kg; SAR(10 g) = 6.1 W/kg

Maximum value of SAR (measured) = 16.6 W/kg



0 dB = 16.6 W/kg

System Check_2600MHz_Head_190901

Communication System: UID 0, CW (0); Frequency: 2600 MHz; Duty Cycle: 1:1

Medium: HSL_2600 Medium parameters used: $f = 2600$ MHz; $\sigma = 2.011$ S/m; $\epsilon_r = 39.957$; $\rho = 1000$ kg/m³

Ambient Temperature : 23.1 °C; Liquid Temperature : 22.5 °C

DASY5 Configuration:

- Probe: EX3DV4 - SN3823; ConvF(6.98, 6.98, 6.98); Calibrated: 2018.11.12;
- Sensor-Surface: 4mm (Mechanical Surface Detection)
- Electronics: DAE4 Sn480; Calibrated: 2019.04.11
- Phantom: SAM 2; Type: QD000P40CC; Serial: TP:1464
- Measurement SW: DASY52, Version 52.8 (8); SEMCAD X Version 14.6.10 (7331)

CW2600/Area Scan (71x81x1): Interpolated grid: dx=1.200 mm, dy=1.200 mm

Maximum value of SAR (interpolated) = 17.7 W/kg

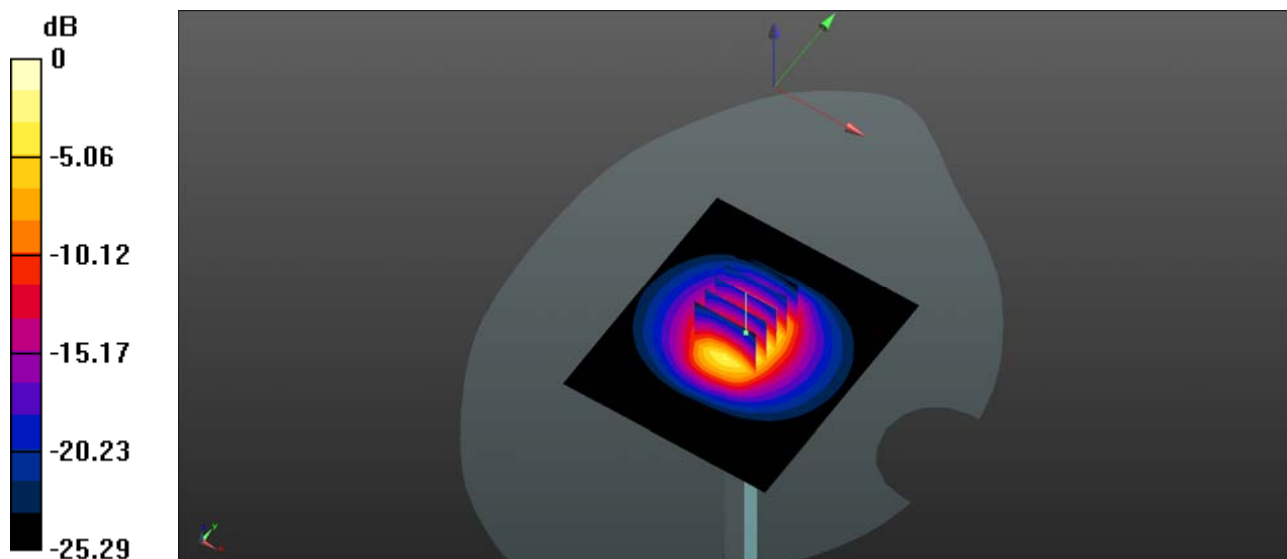
CW2600/Zoom Scan (5x5x7)/Cube 0: Measurement grid: dx=5mm, dy=5mm, dz=5mm

Reference Value = 87.67 V/m; Power Drift = 0.07 dB

Peak SAR (extrapolated) = 31.7 W/kg

SAR(1 g) = 13.57 W/kg; SAR(10 g) = 6.21 W/kg

Maximum value of SAR (measured) = 17.7 W/kg



0 dB = 17.7 W/kg

System Check_5250MHz_Head_190909

Communication System: UID 0, CW (0); Frequency: 5250 MHz; Duty Cycle: 1:1

Medium: HSL_5250 Medium parameters used: $f = 5250$ MHz; $\sigma = 4.699$ S/m; $\epsilon_r = 36.146$; $\rho = 1000$ kg/m³

Ambient Temperature : 23.4 °C; Liquid Temperature : 22.3 °C

DASY5 Configuration:

- Probe: EX3DV4 - SN3823; ConvF(4.6, 4.6, 4.6); Calibrated: 2018.11.12;
- Sensor-Surface: 2mm (Mechanical Surface Detection)
- Electronics: DAE4 Sn480; Calibrated: 2019.04.11
- Phantom: SAM 1; Type: QD000P40CC; Serial: TP:1471
- Measurement SW: DASY52, Version 52.8 (8); SEMCAD X Version 14.6.10 (7331)

CW 5250/Area Scan (201x201x1): Interpolated grid: dx=1.000 mm, dy=1.000 mm
Maximum value of SAR (interpolated) = 8.65 W/kg

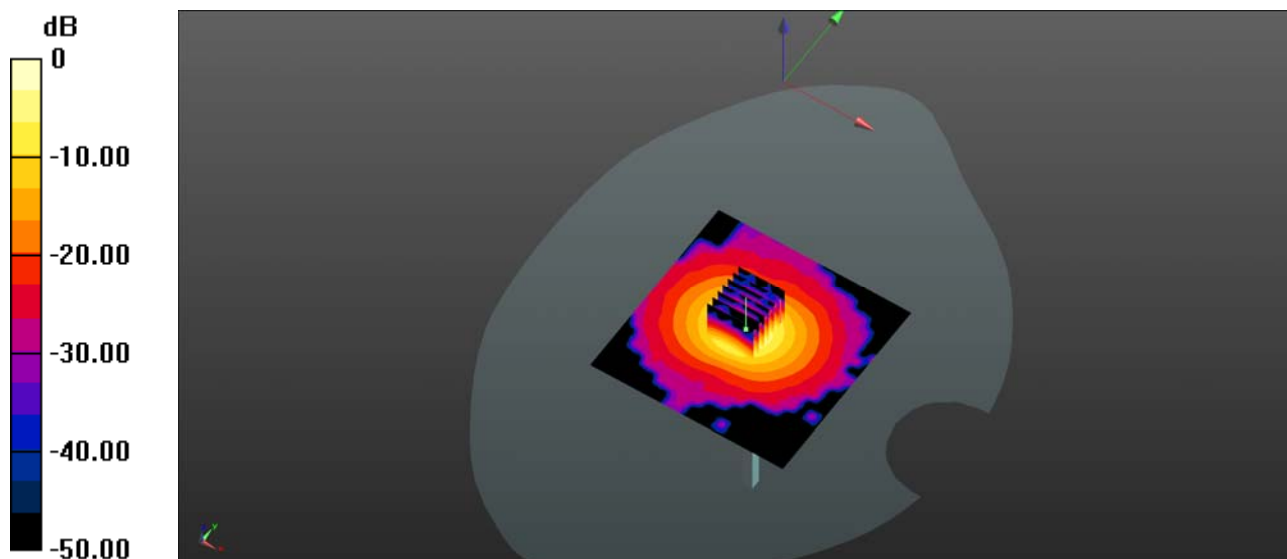
CW 5250/Zoom Scan (7x7x7)/Cube 0: Measurement grid: dx=4mm, dy=4mm, dz=2mm

Reference Value = 35.37 V/m; Power Drift = 0.04 dB

Peak SAR (extrapolated) = 46.7 W/kg

SAR(1 g) = 7.67 W/kg; SAR(10 g) = 2.23 W/kg

Maximum value of SAR (measured) = 8.24 W/kg



System Check_5600MHz_Head_190909

Communication System: UID 0, CW (0); Frequency: 5600 MHz; Duty Cycle: 1:1

Medium: HSL_5600 Medium parameters used: $f = 5600$ MHz; $\sigma = 5.125$ S/m; $\epsilon_r = 35.435$; $\rho = 1000$ kg/m³

Ambient Temperature : 23.4 °C; Liquid Temperature : 22.3 °C

DASY5 Configuration:

- Probe: EX3DV4 - SN3823; ConvF(4.5, 4.5, 4.5); Calibrated: 2018.11.12;
- Sensor-Surface: 2mm (Mechanical Surface Detection)
- Electronics: DAE4 Sn480; Calibrated: 2019.04.11
- Phantom: SAM 1; Type: QD000P40CC; Serial: TP:1471
- Measurement SW: DASY52, Version 52.8 (8); SEMCAD X Version 14.6.10 (7331)

CW 5600/Area Scan (201x201x1): Interpolated grid: dx=1.000 mm, dy=1.000 mm

Maximum value of SAR (interpolated) = 8.96 W/kg

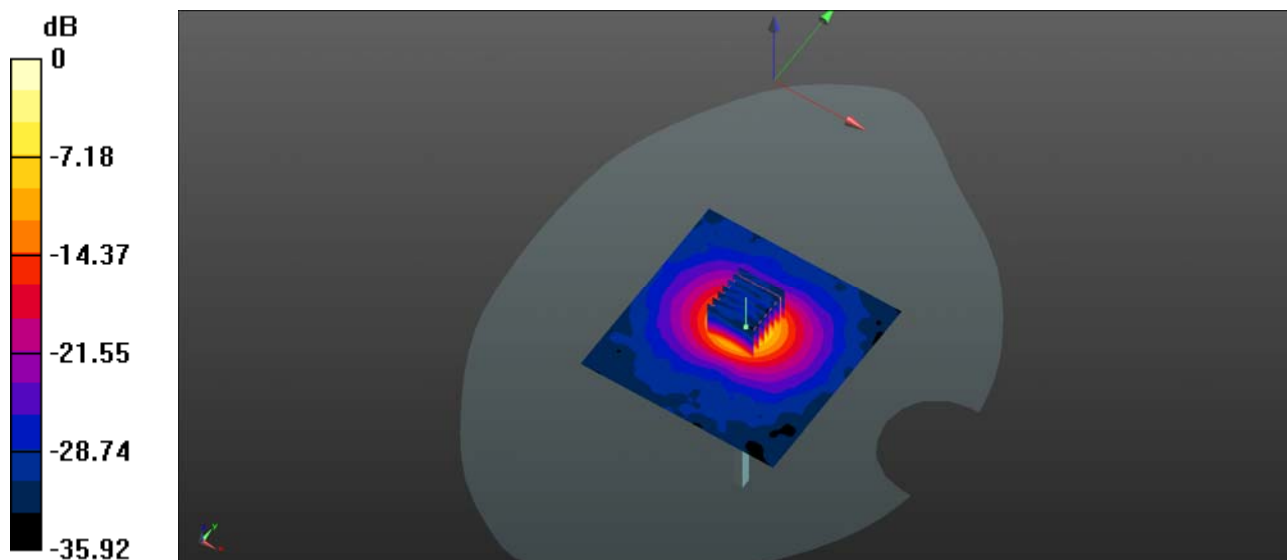
CW 5600/Zoom Scan (7x7x13)/Cube 0: Measurement grid: dx=4mm, dy=4mm, dz=2mm

Reference Value = 33.62 V/m; Power Drift = -0.06 dB

Peak SAR (extrapolated) = 40.3 W/kg

SAR(1 g) = 8.31 W/kg; SAR(10 g) = 2.3 W/kg

Maximum value of SAR (measured) = 17.9 W/kg



0 dB = 17.9 W/kg

System Check_5750MHz_Head_190909

Communication System: UID 0, CW (0); Frequency: 5750 MHz; Duty Cycle: 1:1

Medium: HSL_5750 Medium parameters used: $f = 5750$ MHz; $\sigma = 5.298$ S/m; $\epsilon_r = 35.158$; $\rho = 1000$ kg/m³

Ambient Temperature : 23.4 °C; Liquid Temperature : 22.3 °C

DASY5 Configuration:

- Probe: EX3DV4 - SN3823; ConvF(4.6, 4.6, 4.6); Calibrated: 2018.11.12;
- Sensor-Surface: 2mm (Mechanical Surface Detection)
- Electronics: DAE4 Sn480; Calibrated: 2019.04.11
- Phantom: SAM 1; Type: QD000P40CC; Serial: TP:1471
- Measurement SW: DASY52, Version 52.8 (8); SEMCAD X Version 14.6.10 (7331)

CW5750/Area Scan (101x101x1): Interpolated grid: dx=1.000 mm, dy=1.000 mm

Maximum value of SAR (interpolated) = 16.4 W/kg

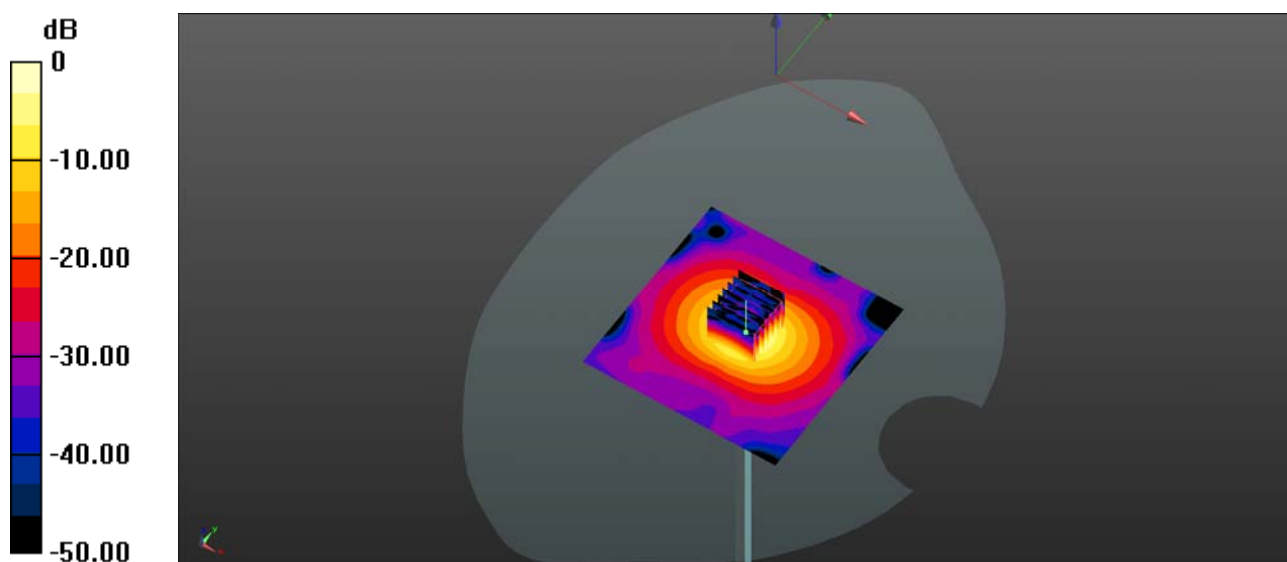
CW5750/Zoom Scan (7x7x13)/Cube 0: Measurement grid: dx=4mm, dy=4mm, dz=2mm

Reference Value = 37.87 V/m; Power Drift = 0.10 dB

Peak SAR (extrapolated) = 39.3 W/kg

SAR(1 g) = 7.96 W/kg; SAR(10 g) = 2.31 W/kg

Maximum value of SAR (measured) = 16.4 W/kg



0 dB = 16.4 W/kg

System Check_750MHz_Body_190907

Communication System: UID 0, CW (0); Frequency: 750 MHz; Duty Cycle: 1:1

Medium: MSL_750 Medium parameters used: $f = 750 \text{ MHz}$; $\sigma = 0.960 \text{ S/m}$; $\epsilon_r = 53.900$; $\rho = 1000 \text{ kg/m}^3$

Ambient Temperature : $23.5 \text{ }^\circ\text{C}$; Liquid Temperature : $22.4 \text{ }^\circ\text{C}$

DASY5 Configuration:

- Probe: ES3DV3 - SN3154; ConvF(6.34, 6.34, 6.34); Calibrated: 2019.07.16;
- Sensor-Surface: 4mm (Mechanical Surface Detection)
- Electronics: DAE4 Sn480; Calibrated: 2018.10.29
- Phantom: SAM 1; Type: QD000P40CC; Serial: TP:1471
- Measurement SW: DASY52, Version 52.8 (8); SEMCAD X Version 14.6.10 (7331)

CW 750/Area Scan (81x81x1): Interpolated grid: $dx=1.500 \text{ mm}$, $dy=1.500 \text{ mm}$

Maximum value of SAR (interpolated) = 4.22 W/kg

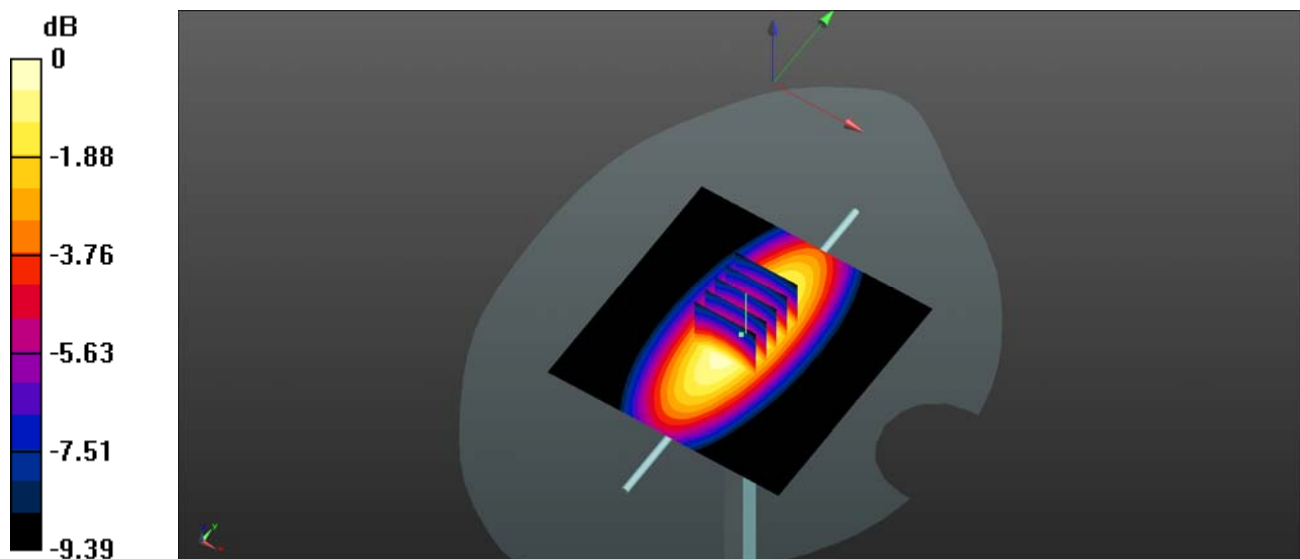
CW 750/Zoom Scan (5x5x7)/Cube 0: Measurement grid: $dx=8\text{mm}$, $dy=8\text{mm}$, $dz=5\text{mm}$

Reference Value = 66.33 V/m ; Power Drift = 0.02 dB

Peak SAR (extrapolated) = 5.87 W/kg

SAR(1 g) = 2.16 W/kg ; SAR(10 g) = 1.45 W/kg

Maximum value of SAR (measured) = 4.20 W/kg



0 dB = 4.20 W/kg

System Check_835MHz_Body_190904

Communication System: UID 0, CW (0); Frequency: 835 MHz; Duty Cycle: 1:1

Medium: MSL_835 Medium parameters used: $f = 835 \text{ MHz}$; $\sigma = 0.981 \text{ S/m}$; $\epsilon_r = 55.748$; $\rho = 1000 \text{ kg/m}^3$

Ambient Temperature : $23.4 \text{ }^\circ\text{C}$; Liquid Temperature : $22.4 \text{ }^\circ\text{C}$

DASY5 Configuration:

- Probe: EX3DV4 - SN3823; ConvF(9.24, 9.24, 9.24); Calibrated: 2018.11.12;
- Sensor-Surface: 4mm (Mechanical Surface Detection)
- Electronics: DAE4 Sn480; Calibrated: 2019.04.11
- Phantom: SAM 1; Type: QD000P40CC; Serial: TP:1471
- Measurement SW: DASY52, Version 52.8 (8); SEMCAD X Version 14.6.10 (7331)

CW835/Area Scan (81x81x1): Interpolated grid: $dx=1.500 \text{ mm}$, $dy=1.500 \text{ mm}$

Maximum value of SAR (interpolated) = 2.56 W/kg

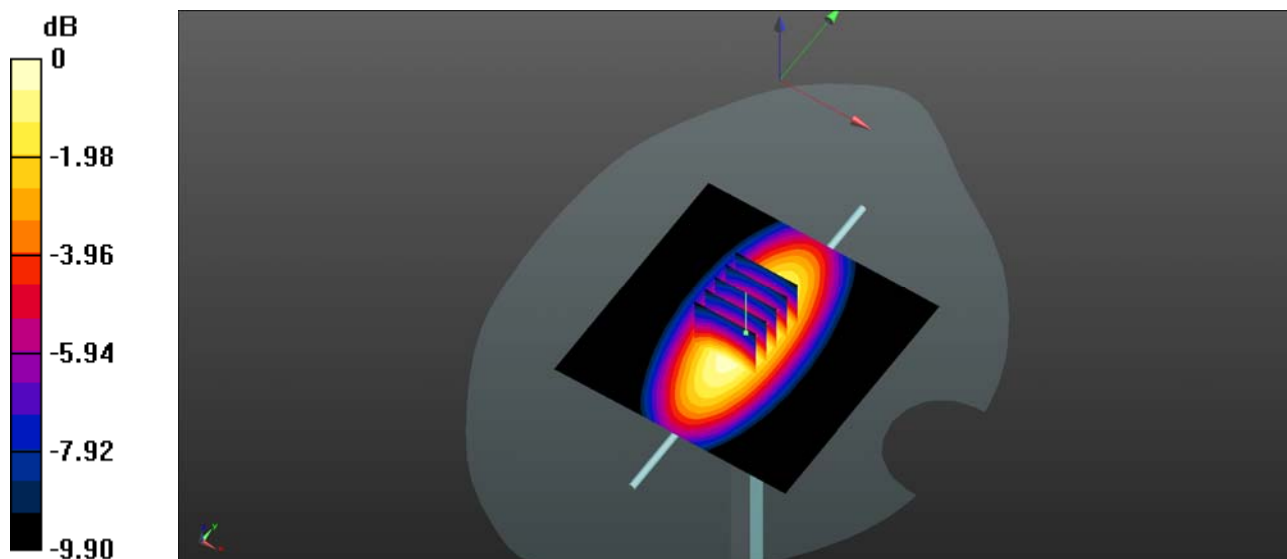
CW835/Zoom Scan (5x5x7)/Cube 0: Measurement grid: $dx=8\text{mm}$, $dy=8\text{mm}$, $dz=5\text{mm}$

Reference Value = 51.37 V/m ; Power Drift = 0.01 dB

Peak SAR (extrapolated) = 3.44 W/kg

SAR(1 g) = 2.37 W/kg ; SAR(10 g) = 1.57 W/kg

Maximum value of SAR (measured) = 2.56 W/kg



0 dB = 2.56 W/kg

System Check_1750MHz_Body_190906

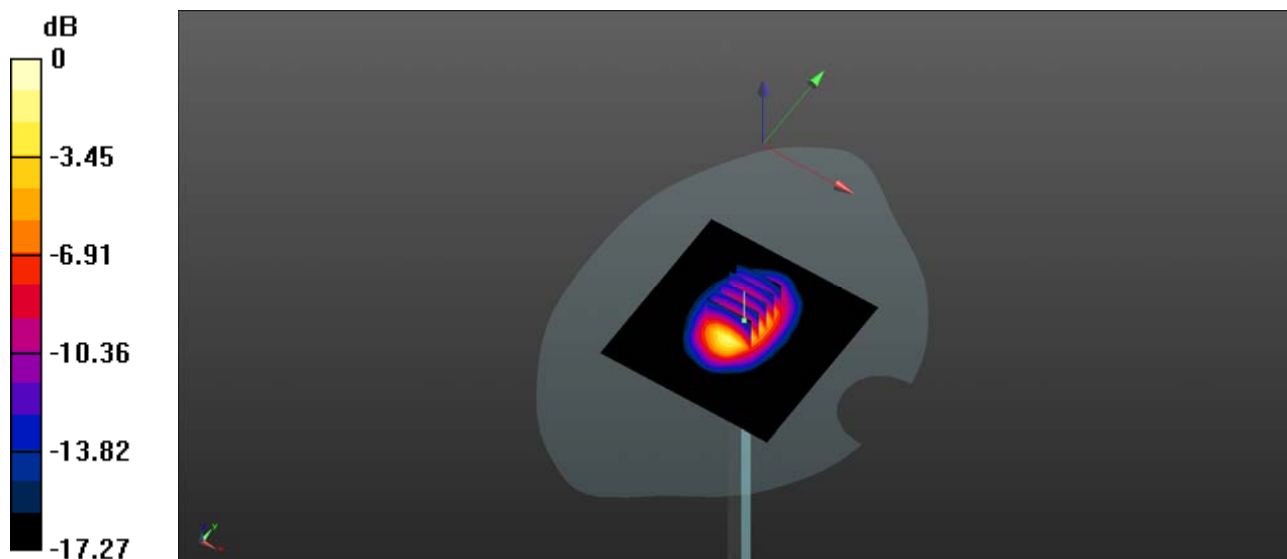
Communication System: UID 0, CW (0); Frequency: 1750 MHz; Duty Cycle: 1:1
 Medium: MSL_1750 Medium parameters used: $f = 1750$ MHz; $\sigma = 1.499$ S/m; $\epsilon_r = 53.911$; $\rho = 1000$ kg/m³
 Ambient Temperature : 23.6 °C; Liquid Temperature : 22.3 °C

DASY5 Configuration:

- Probe: EX3DV4 - SN3823; ConvF(7.65, 7.65, 7.65); Calibrated: 2018.11.12;
- Sensor-Surface: 4mm (Mechanical Surface Detection)
- Electronics: DAE4 Sn480; Calibrated: 2019.04.11
- Phantom: SAM 1; Type: QD000P40CC; Serial: TP:1471
- Measurement SW: DASY52, Version 52.8 (8); SEMCAD X Version 14.6.10 (7331)

CW1750/Area Scan (81x81x1): Interpolated grid: dx=1.500 mm, dy=1.500 mm
 Maximum value of SAR (interpolated) = 12.0 W/kg

CW1750/Zoom Scan (5x5x7)/Cube 0: Measurement grid: dx=8mm, dy=8mm, dz=5mm
 Reference Value = 88.23 V/m; Power Drift = 0.02 dB
 Peak SAR (extrapolated) = 20.7 W/kg
SAR(1 g) = 9.9 W/kg; SAR(10 g) = 4.97 W/kg
 Maximum value of SAR (measured) = 11.7 W/kg



0 dB = 12.0 W/kg

System Check_1900MHz_Body_190917

Communication System: UID 0, CW (0); Frequency: 1900 MHz; Duty Cycle: 1:1

Medium: MSL_1900 Medium parameters used: $f = 1900$ MHz; $\sigma = 1.519$ S/m; $\epsilon_r = 54.555$; $\rho = 1000$ kg/m³

Ambient Temperature : 23.5 °C; Liquid Temperature : 22.7 °C

DASY5 Configuration:

- Probe: EX3DV4 - SN3823; ConvF(7.4, 7.4, 7.4); Calibrated: 2018.11.12;
- Sensor-Surface: 4mm (Mechanical Surface Detection)
- Electronics: DAE4 Sn480; Calibrated: 2019.04.11
- Phantom: SAM 1; Type: QD000P40CC; Serial: TP:1471
- Measurement SW: DASY52, Version 52.8 (8); SEMCAD X Version 14.6.10 (7331)

CW 1900/Area Scan (81x81x1): Interpolated grid: dx=1.500 mm, dy=1.500 mm

Maximum value of SAR (interpolated) = 11.0 W/kg

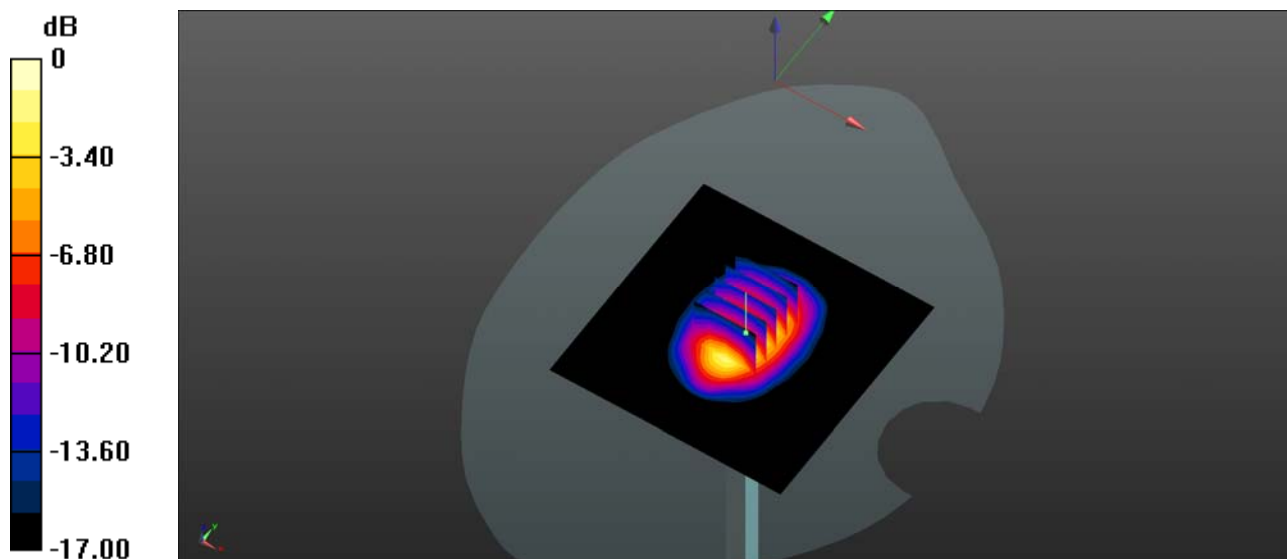
CW 1900/Zoom Scan (5x5x7)/Cube 0: Measurement grid: dx=8mm, dy=8mm, dz=5mm

Reference Value = 84.47 V/m; Power Drift = 0.02 dB

Peak SAR (extrapolated) = 17.2 W/kg

SAR(1 g) = 9.79 W/kg; SAR(10 g) = 5.22 W/kg

Maximum value of SAR (measured) = 10.8 W/kg



0 dB = 11.0 W/kg

System Check_Body_2300MHz_190908

Communication System: UID 0, CW (0); Frequency: 2300 MHz; Duty Cycle: 1:1

Medium: MSL_2300 Medium parameters used: $f = 2300$ MHz; $\sigma = 1.779$ S/m; $\epsilon_r = 53.478$; $\rho = 1000$ kg/m³

Ambient Temperature : 23.6 °C; Liquid Temperature : 22.4 °C

DASY5 Configuration:

- Probe: EX3DV4 - SN3823; ConvF(7.38, 7.38, 7.38); Calibrated: 2018.11.12;
- Sensor-Surface: 4mm (Mechanical Surface Detection)
- Electronics: DAE4 Sn480; Calibrated: 2019.04.11
- Phantom: SAM 1; Type: QD000P40CC; Serial: TP:1471
- Measurement SW: DASY52, Version 52.8 (8); SEMCAD X Version 14.6.10 (7331)

CW2300/Area Scan (81x81x1): Interpolated grid: dx=1.200 mm, dy=1.200 mm

Maximum value of SAR (interpolated) = 16.0 W/kg

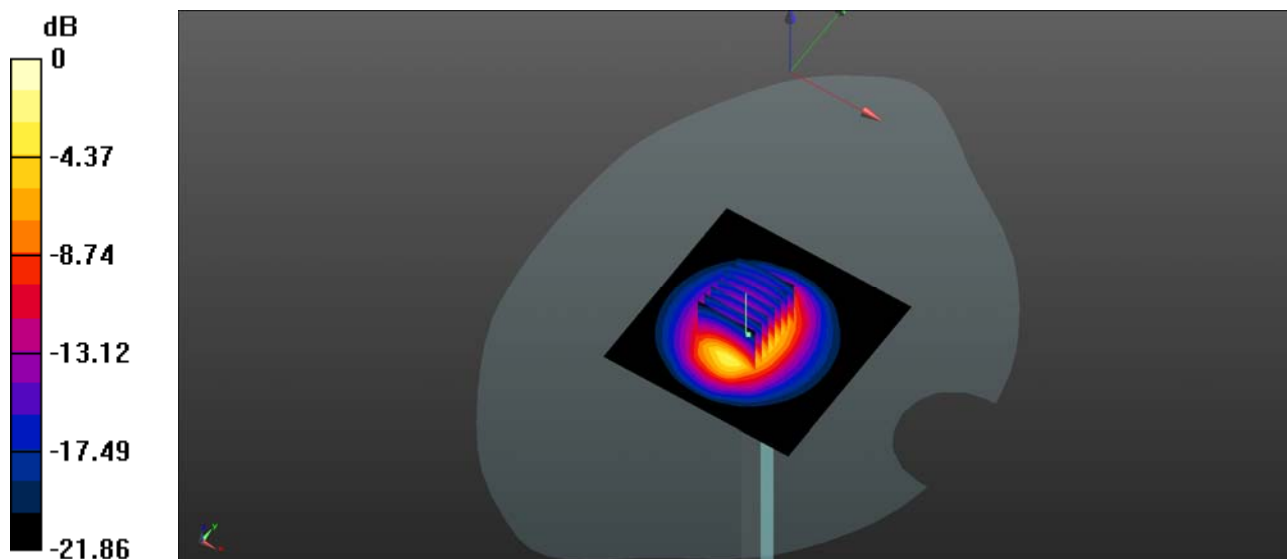
CW2300/Zoom Scan (7x7x7)/Cube 0: Measurement grid: dx=5mm, dy=5mm, dz=5mm

Reference Value = 94.79 V/m; Power Drift = 0.02 dB

Peak SAR (extrapolated) = 21.9 W/kg

SAR(1 g) = 12.1 W/kg; SAR(10 g) = 5.62 W/kg

Maximum value of SAR (measured) = 16.1 W/kg



0 dB = 16.0 W/kg

System Check_2450MHz_Body_190910

Communication System: UID 0, CW (0); Frequency: 2450 MHz; Duty Cycle: 1:1

Medium: MSL_2450 Medium parameters used: $f = 2450$ MHz; $\sigma = 1.897$ S/m; $\epsilon_r = 53.047$; $\rho = 1000$ kg/m³

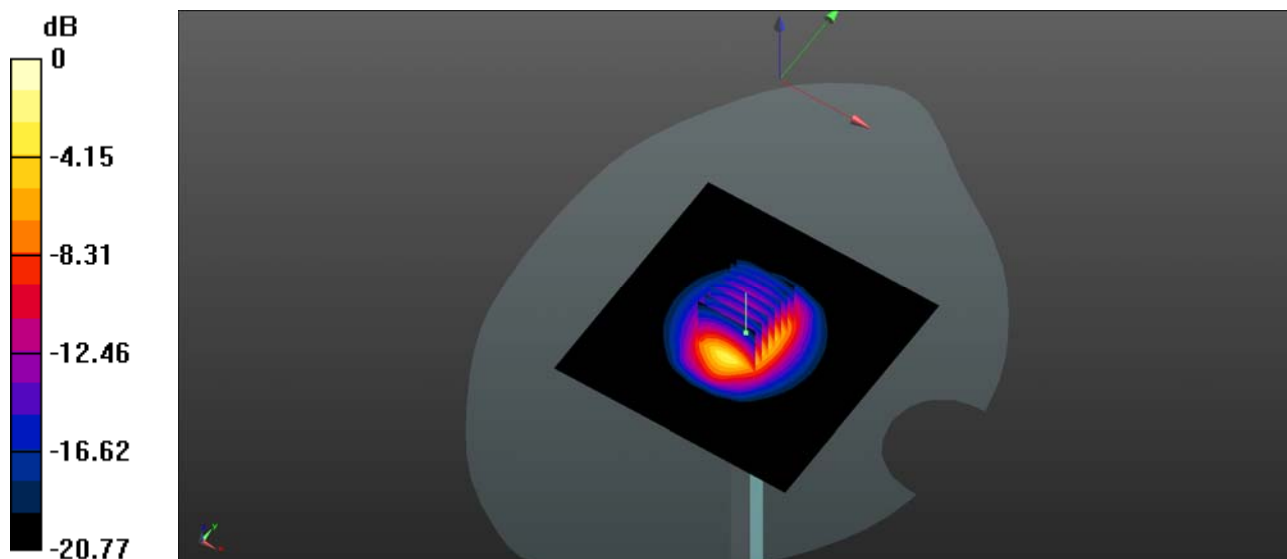
Ambient Temperature : 23.4 °C; Liquid Temperature : 22.2 °C

DASY5 Configuration:

- Probe: EX3DV4 - SN3823; ConvF(7.15, 7.15, 7.15); Calibrated: 2018.11.12;
- Sensor-Surface: 4mm (Mechanical Surface Detection)
- Electronics: DAE4 Sn480; Calibrated: 2019.04.11
- Phantom: SAM 2; Type: QD000P40CC; Serial: TP:1464
- Measurement SW: DASY52, Version 52.8 (8); SEMCAD X Version 14.6.10 (7331)

CW 2450/Area Scan (101x101x1): Interpolated grid: dx=1.200 mm, dy=1.200 mm
 Maximum value of SAR (interpolated) = 14.3 W/kg

CW 2450/Zoom Scan (7x7x7)/Cube 0: Measurement grid: dx=5mm, dy=5mm, dz=5mm
 Reference Value = 87.03 V/m; Power Drift = 0.02 dB
 Peak SAR (extrapolated) = 24.5 W/kg
SAR(1 g) = 12.31 W/kg; SAR(10 g) = 5.74 W/kg
 Maximum value of SAR (measured) = 14.2 W/kg



0 dB = 14.3 W/kg

System Check_2600MHz_Body_190908

Communication System: UID 0, CW (0); Frequency: 2600 MHz; Duty Cycle: 1:1

Medium: MSL_2600 Medium parameters used: $f = 2600$ MHz; $\sigma = 2.171$ S/m; $\epsilon_r = 52.512$; $\rho = 1000$ kg/m³

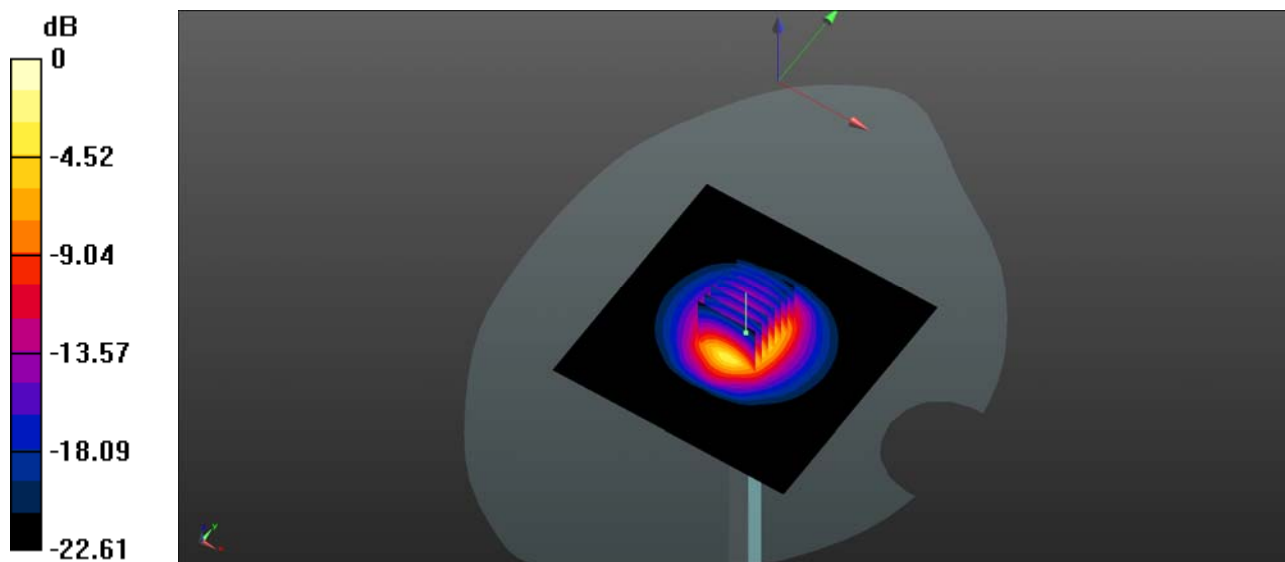
Ambient Temperature : 23.6 °C; Liquid Temperature : 22.4 °C

DASY5 Configuration:

- Probe: EX3DV4 - SN3823; ConvF(7.01, 7.01, 7.01); Calibrated: 2018.11.12;
- Sensor-Surface: 4mm (Mechanical Surface Detection)
- Electronics: DAE4 Sn480; Calibrated: 2019.04.11
- Phantom: SAM 1; Type: QD000P40CC; Serial: TP:1471
- Measurement SW: DASY52, Version 52.8 (8); SEMCAD X Version 14.6.10 (7331)

CW 2600/Area Scan (101x101x1): Interpolated grid: dx=1.200 mm, dy=1.200 mm
Maximum value of SAR (interpolated) = 14.7 W/kg

CW 2600/Zoom Scan (7x7x7)/Cube 0: Measurement grid: dx=5mm, dy=5mm, dz=5mm
Reference Value = 83.27 V/m; Power Drift = 0.03 dB
Peak SAR (extrapolated) = 26.2 W/kg
SAR(1 g) = 13.23 W/kg; SAR(10 g) = 5.97 W/kg
Maximum value of SAR (measured) = 14.6 W/kg



0 dB = 14.7 W/kg

System Check_5250MHz_Body_190910

Communication System: UID 0, CW (0); Frequency: 5250 MHz; Duty Cycle: 1:1

Medium: MSL_5250 Medium parameters used: $f = 5250$ MHz; $\sigma = 5.40$ S/m; $\epsilon_r = 48.920$; $\rho = 1000$ kg/m³

Ambient Temperature : 23.4 °C; Liquid Temperature : 22.2 °C

DASY5 Configuration:

- Probe: EX3DV4 - SN3823; ConvF(4.73, 4.73, 4.73); Calibrated: 2018.11.12;
- Sensor-Surface: 2mm (Mechanical Surface Detection)
- Electronics: DAE4 Sn480; Calibrated: 2019.04.11
- Phantom: SAM 1; Type: QD000P40CC; Serial: TP:1471
- Measurement SW: DASY52, Version 52.8 (8); SEMCAD X Version 14.6.10 (7331)

CW 5250/Area Scan (201x201x1): Interpolated grid: dx=1.000 mm, dy=1.000 mm

Maximum value of SAR (interpolated) = 11.0 W/kg

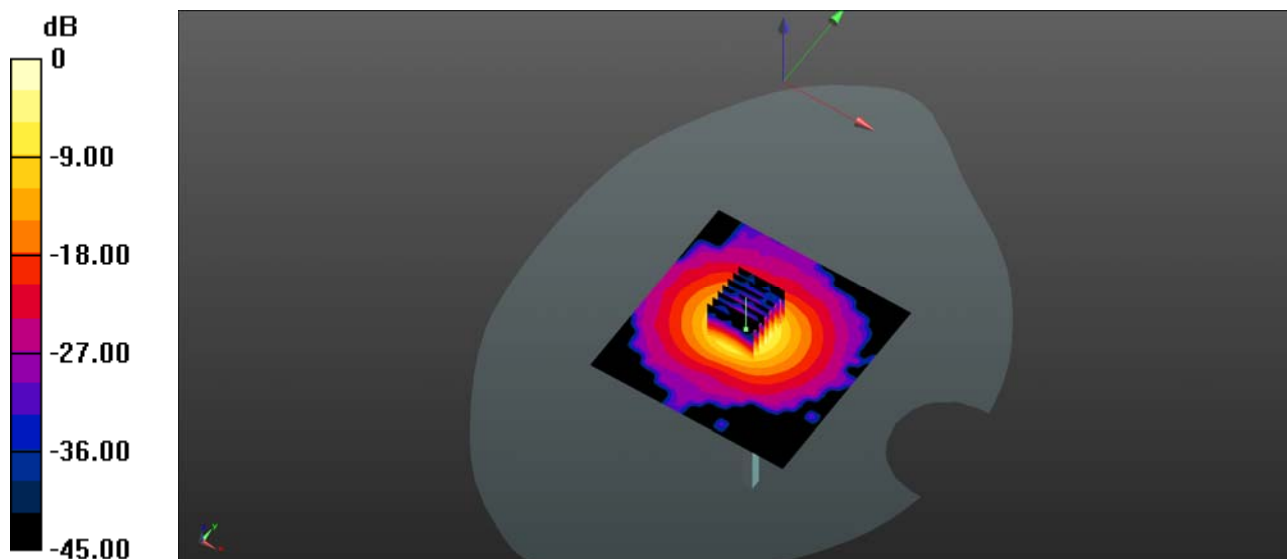
CW 5250/Zoom Scan (7x7x7)/Cube 0: Measurement grid: dx=4mm, dy=4mm, dz=2mm

Reference Value = 37.26 V/m; Power Drift = 0.04 dB

Peak SAR (extrapolated) = 58.8 W/kg

SAR(1 g) = 7.58 W/kg; SAR(10 g) = 2.09 W/kg

Maximum value of SAR (measured) = 10.5 W/kg



0 dB = 11.0 W/kg

System Check_5600MHz_Body_190910

Communication System: UID 0, CW (0); Frequency: 5600 MHz; Duty Cycle: 1:1

Medium: MSL_5600 Medium parameters used: $f = 5600$ MHz; $\sigma = 5.789$ S/m; $\epsilon_r = 47.929$; $\rho = 1000$ kg/m³

Ambient Temperature : 23.4 °C; Liquid Temperature : 22.2 °C

DASY5 Configuration:

- Probe: EX3DV4 - SN3823; ConvF(3.96, 3.96, 3.96); Calibrated: 2018.11.12;
- Sensor-Surface: 2mm (Mechanical Surface Detection)
- Electronics: DAE4 Sn480; Calibrated: 2019.04.11
- Phantom: SAM 1; Type: QD000P40CC; Serial: TP:1471
- Measurement SW: DASY52, Version 52.8 (8); SEMCAD X Version 14.6.10 (7331)

CW5600/Area Scan (201x201x1): Interpolated grid: dx=1.000 mm, dy=1.000 mm

Maximum value of SAR (interpolated) = 22.5 W/kg

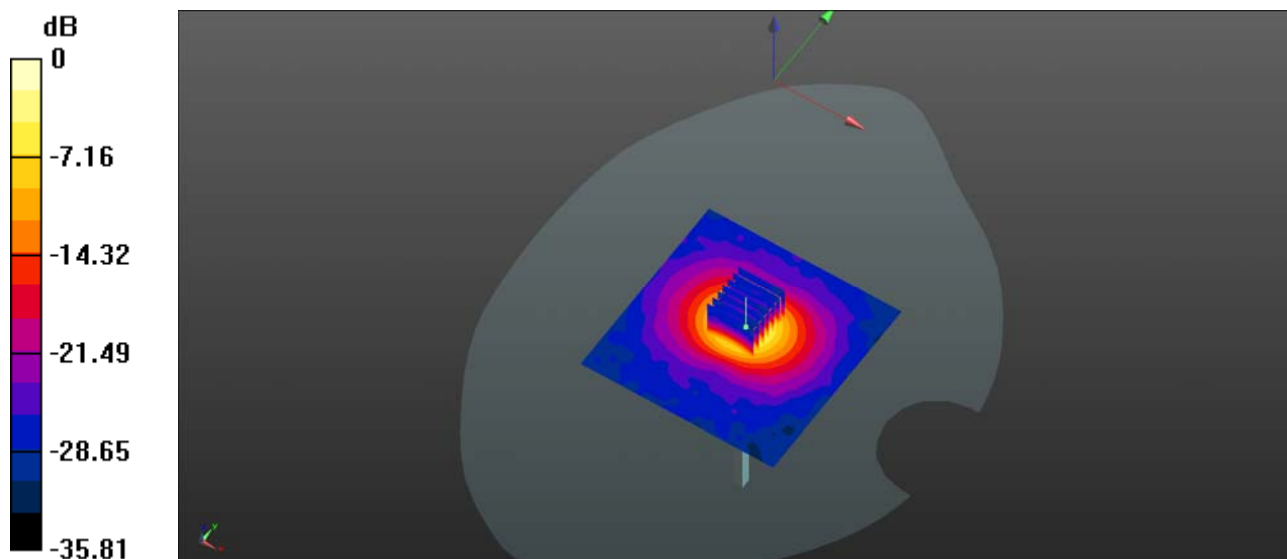
CW5600/Zoom Scan (7x7x13)/Cube 0: Measurement grid: dx=4mm, dy=4mm, dz=2mm

Reference Value = 35.84 V/m; Power Drift = -0.06 dB

Peak SAR (extrapolated) = 47.8 W/kg

SAR(1 g) = 8.03 W/kg; SAR(10 g) = 2.17 W/kg

Maximum value of SAR (measured) = 22.4 W/kg



0 dB = 22.5 W/kg

System Check_5750MHz_Body_190910

Communication System: UID 0, CW (0); Frequency: 5750 MHz; Duty Cycle: 1:1

Medium: MSL_5750 Medium parameters used: $f = 5750$ MHz; $\sigma = 6.062$ S/m; $\epsilon_r = 47.473$; $\rho = 1000$ kg/m³

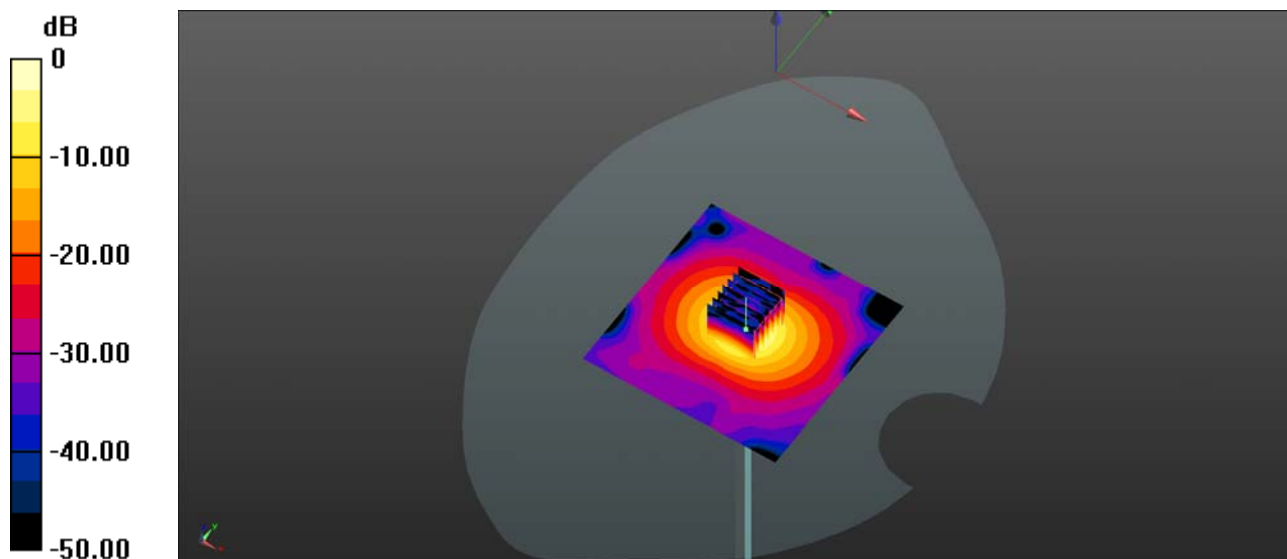
Ambient Temperature : 23.4 °C; Liquid Temperature : 22.2 °C

DASY5 Configuration:

- Probe: EX3DV4 - SN3823; ConvF(3.98, 3.98, 3.98); Calibrated: 2018.11.12;
- Sensor-Surface: 2mm (Mechanical Surface Detection)
- Electronics: DAE4 Sn480; Calibrated: 2019.04.11
- Phantom: SAM 1; Type: QD000P40CC; Serial: TP:1471
- Measurement SW: DASY52, Version 52.8 (8); SEMCAD X Version 14.6.10 (7331)

CW 5750/Area Scan (101x101x1): Interpolated grid: dx=1.000 mm, dy=1.000 mm
Maximum value of SAR (interpolated) = 20.8 W/kg

CW 5750/Zoom Scan (7x7x13)/Cube 0: Measurement grid: dx=4mm, dy=4mm, dz=2mm
Reference Value = 40.71 V/m; Power Drift = 0.10 dB
Peak SAR (extrapolated) = 46.8 W/kg
SAR(1 g) = 7.85 W/kg; SAR(10 g) = 2.12 W/kg
Maximum value of SAR (measured) = 20.7 W/kg



0 dB = 20.8 W/kg