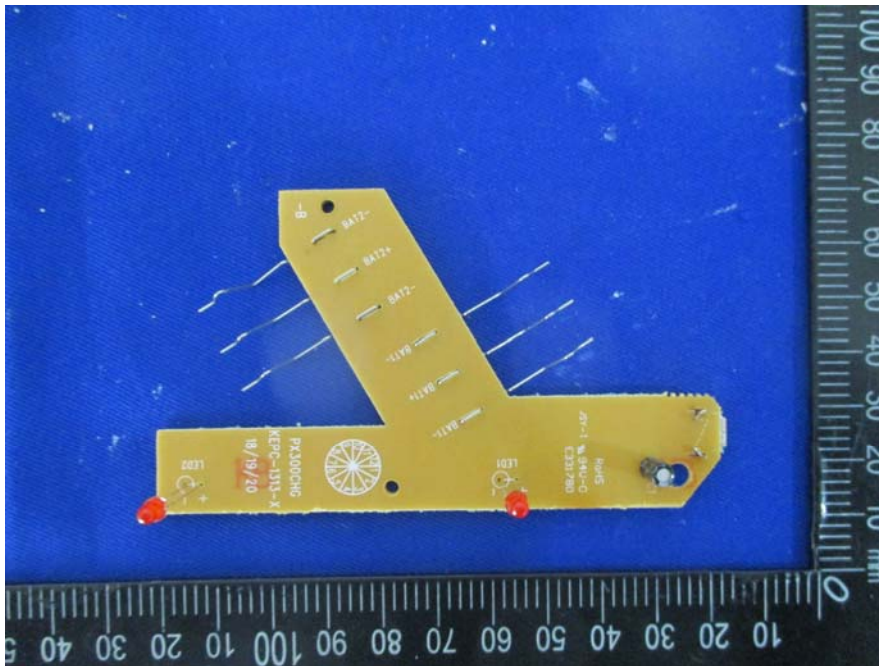


EXHIBIT C - EUT INTERNAL PHOTOGRAPHS

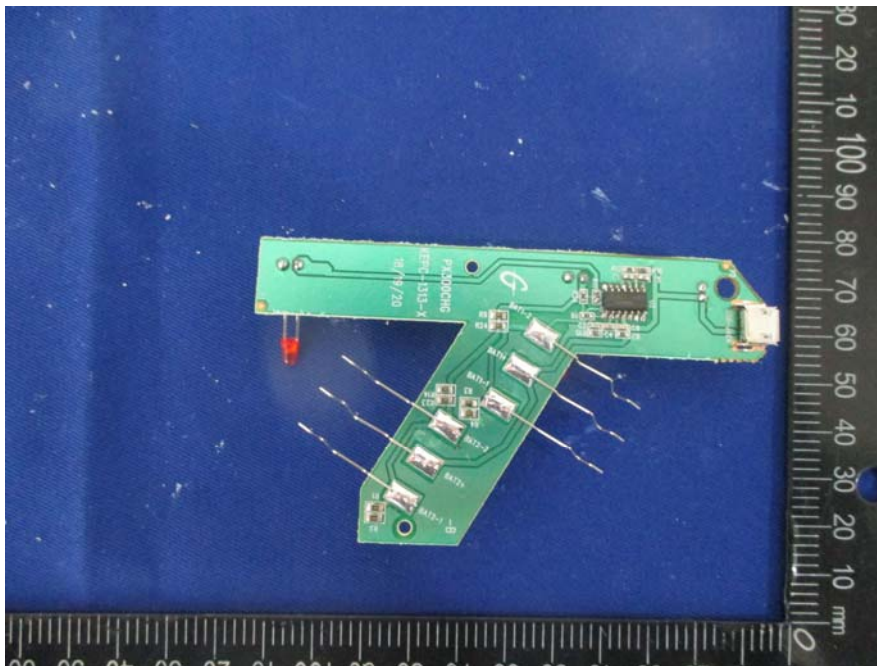
EUT –Charger Base Uncover View



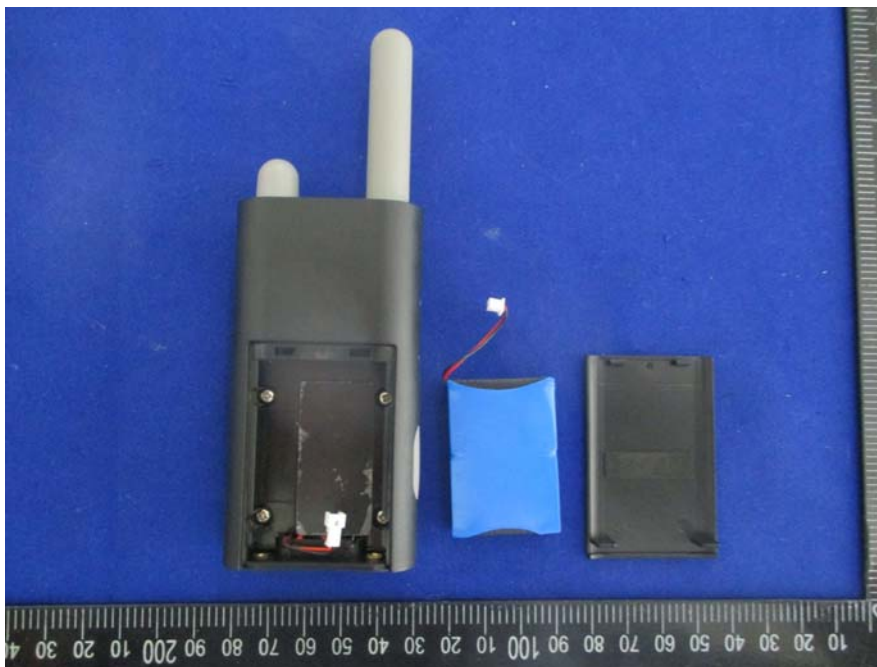
EUT –Charger Base PCB Top View



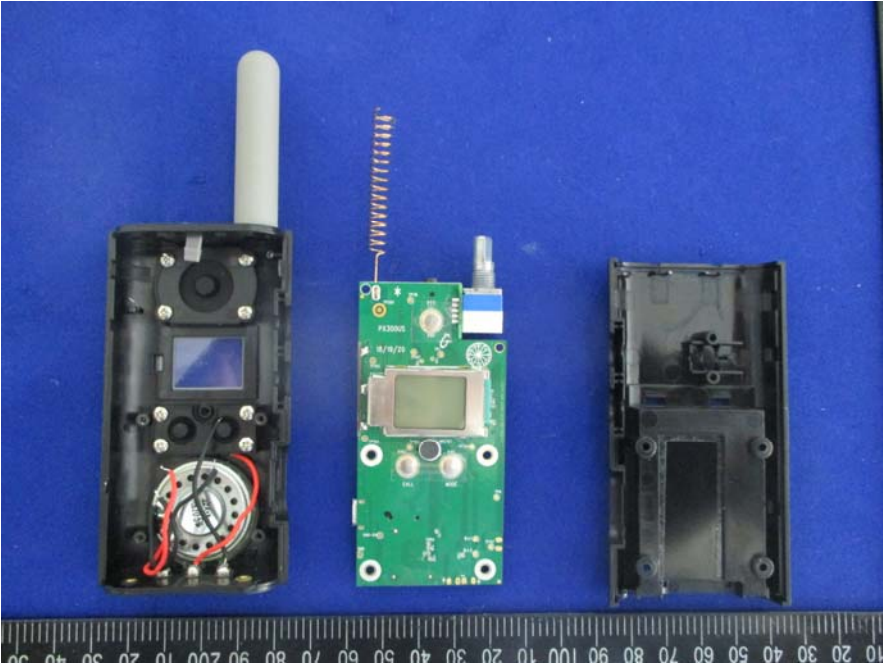
EUT –Charger Base PCB Bottom View



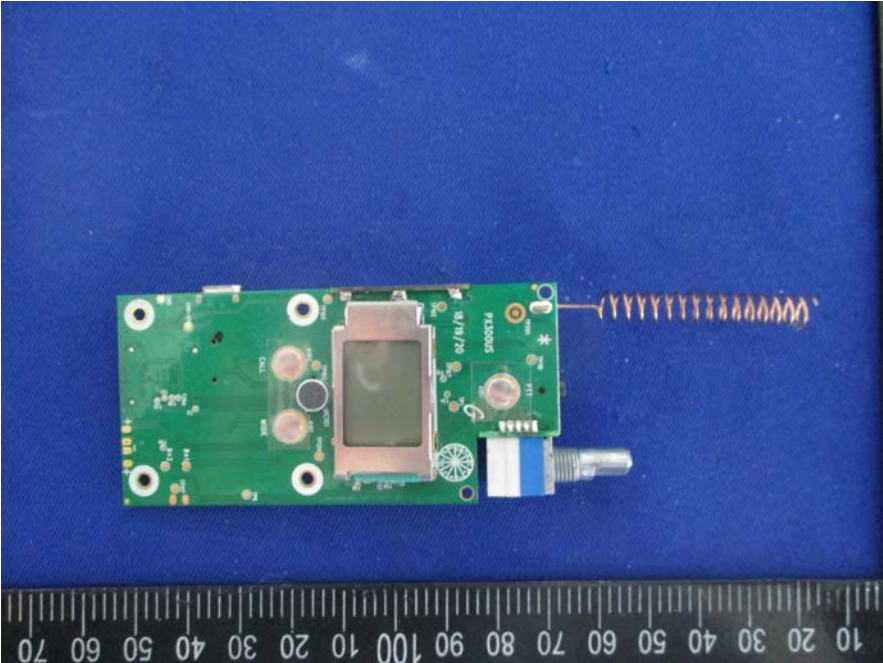
EUT –Uncover View



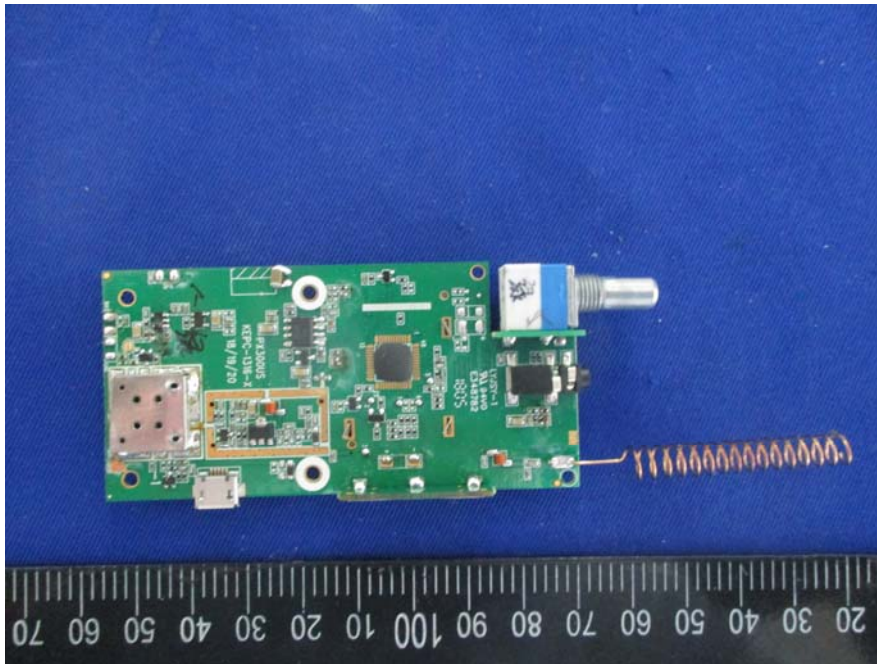
EUT –Uncover View



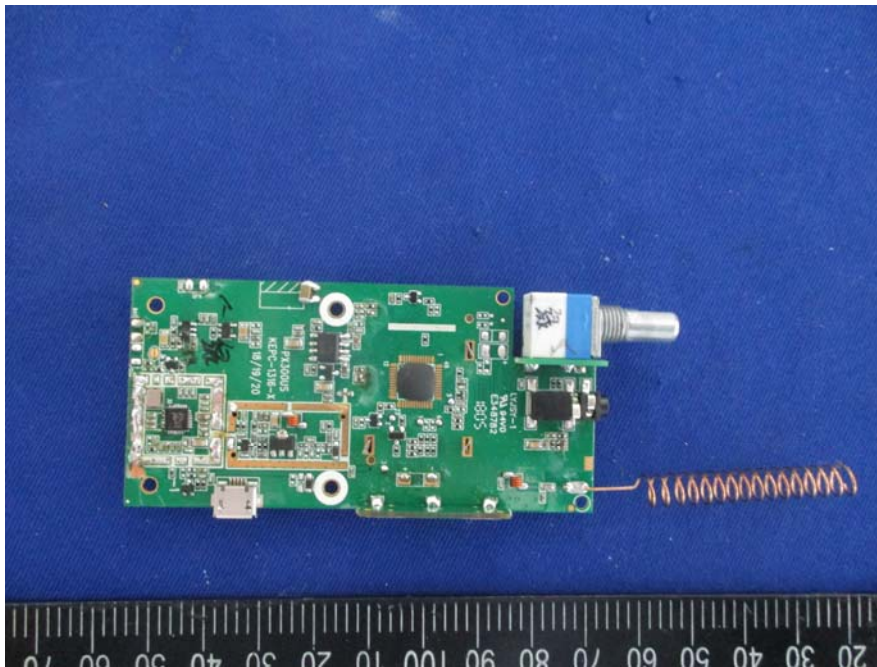
EUT –Main PCB Top View



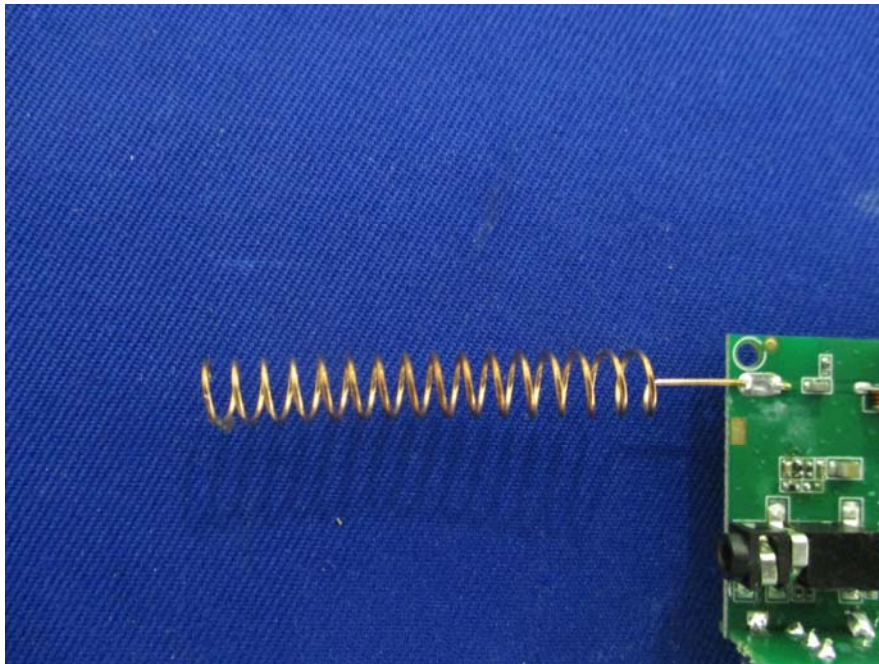
EUT –Main PCB Back With Cover View



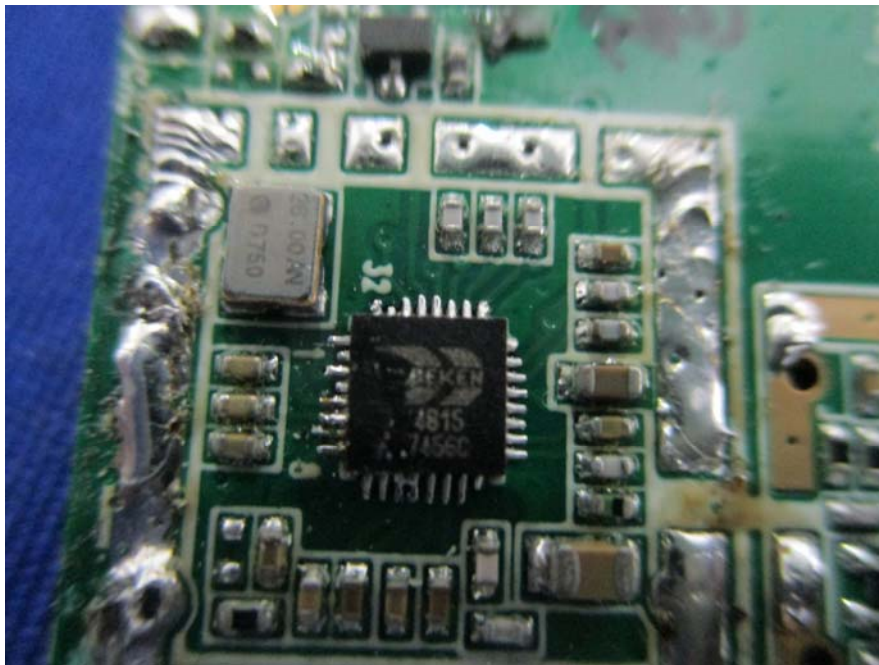
EUT –Main PCB Back Without Cover View



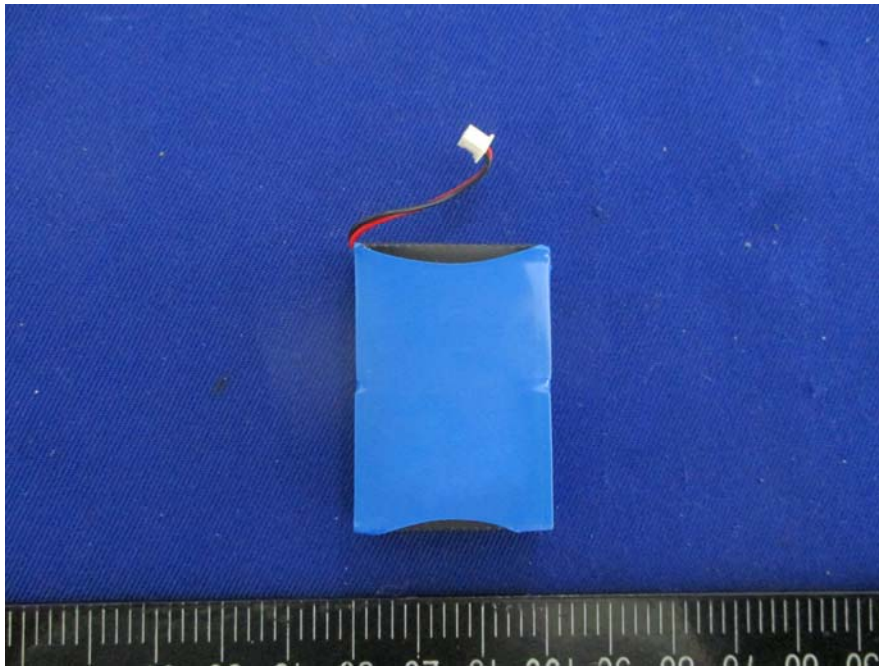
EUT –Antenna View



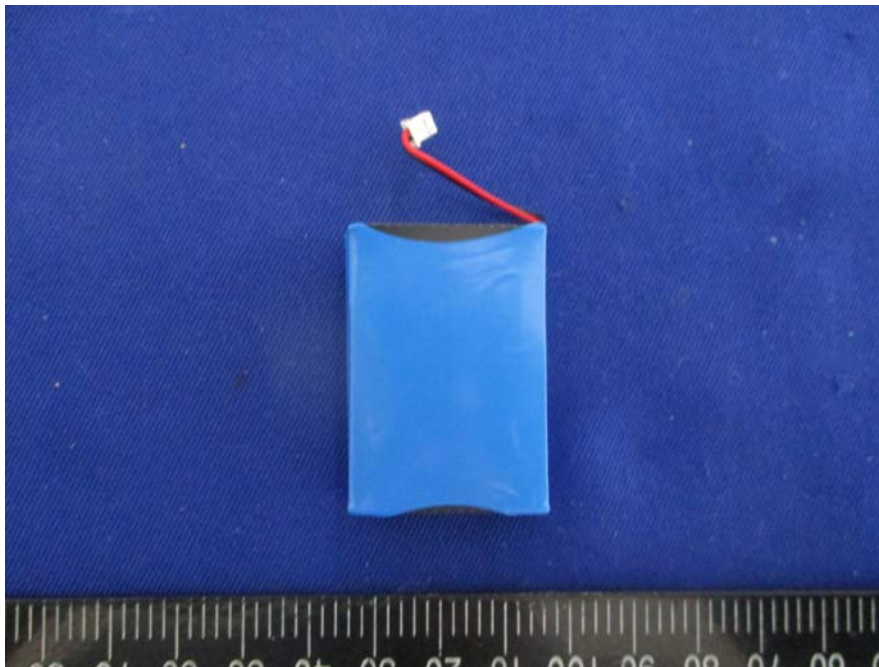
EUT –Chip View



EUT –Battery Top View



EUT –Battery Back View



EUT –Battery Label View

Lithium polymer battery

Model: 863040P

Specification: 3.7V/1000mAh(3.7Wh)

Limited charge voltage:4.2V

Executive standard:GB31241-2014

Manufacture date:2017-12



Warning : See Owner's Manual for all safety and operating instructions

●LI-POLYMER BATTERY. DO NOT TRANSPORT PACKAGE IF DAMAGED. A FIRE HAZARD COULD EXIST.

- Do not disassemble, crush, deform, puncture, shred or incinerate the battery.
- Do not expose to fire or high temperature.
- Charge with dedicated charger only.
- Do not use the battery if swell or damage.
- Replace only the battery pack designated for this product

Factory: Shenzhen EPT battery Co., Ltd