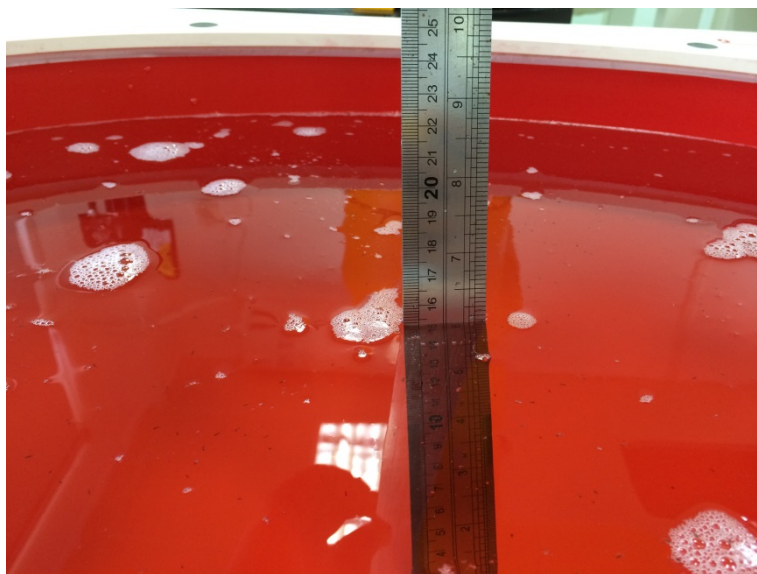
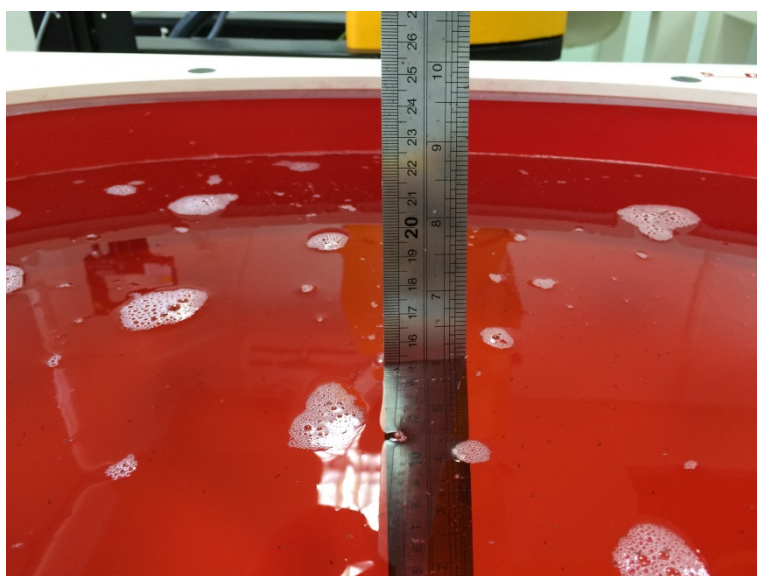


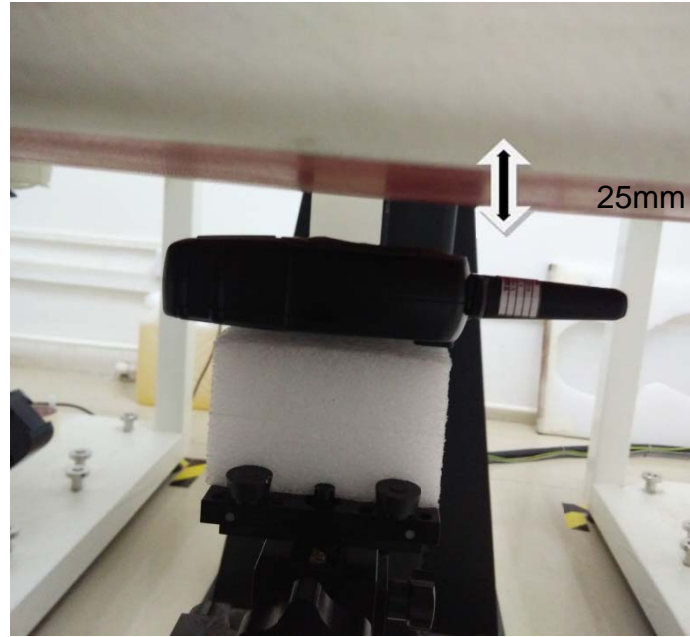
1. Test Setup Photos



Photograph of the depth in the Head Phantom (450MHz, 15.2cm)



Photograph of the depth in the Body Phantom (450MHz, 15.3cm)



Face-held, the front of the EUT towards phantom

Antenna Distance (mm)

Antenna Type	Separation Distance (mm)		
	@ front surface of the EUT	@ antenna's base	@ antenna's tip
A1	25.0	28.2	30.7



Body-worn Configuration with A1, B1, BC1

Antenna Distance (mm)

Antenna Type	Separation Distance (mm)		
	@ front surface of the EUT	@ antenna's base	@ antenna's tip
A1	4.2	7.8	7.1