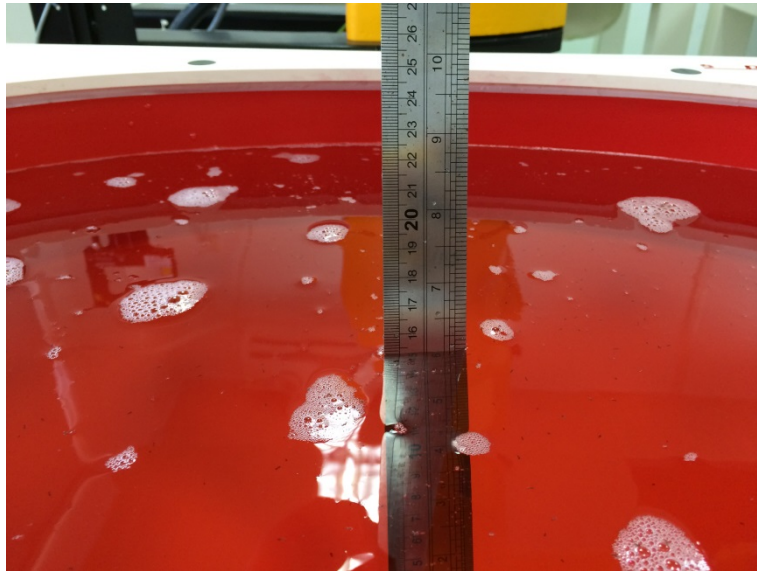
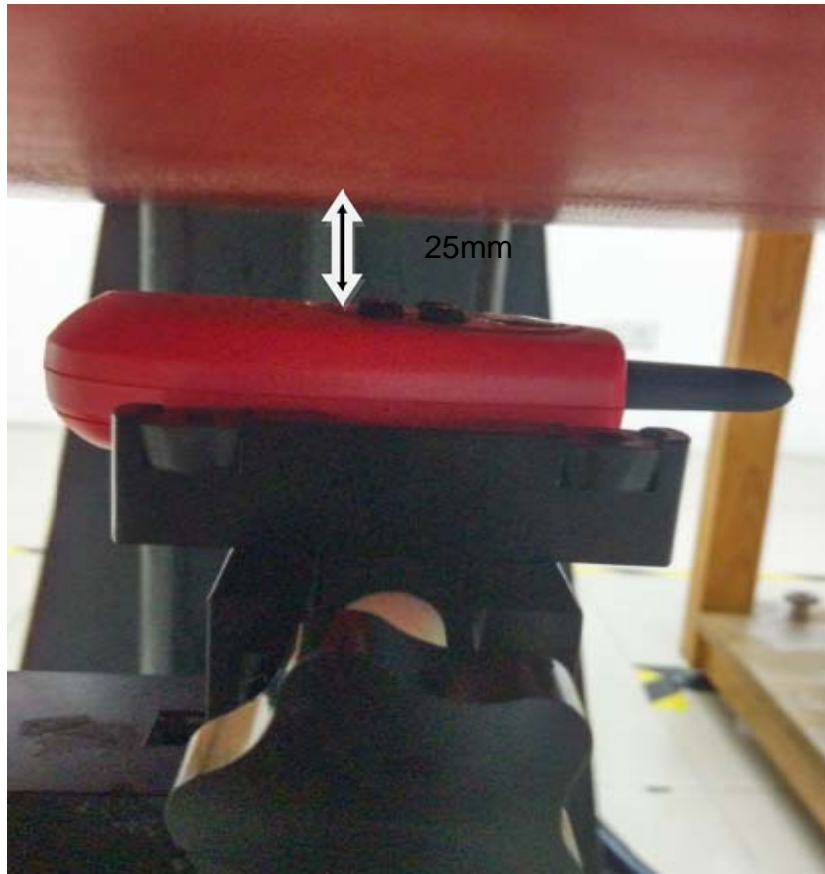


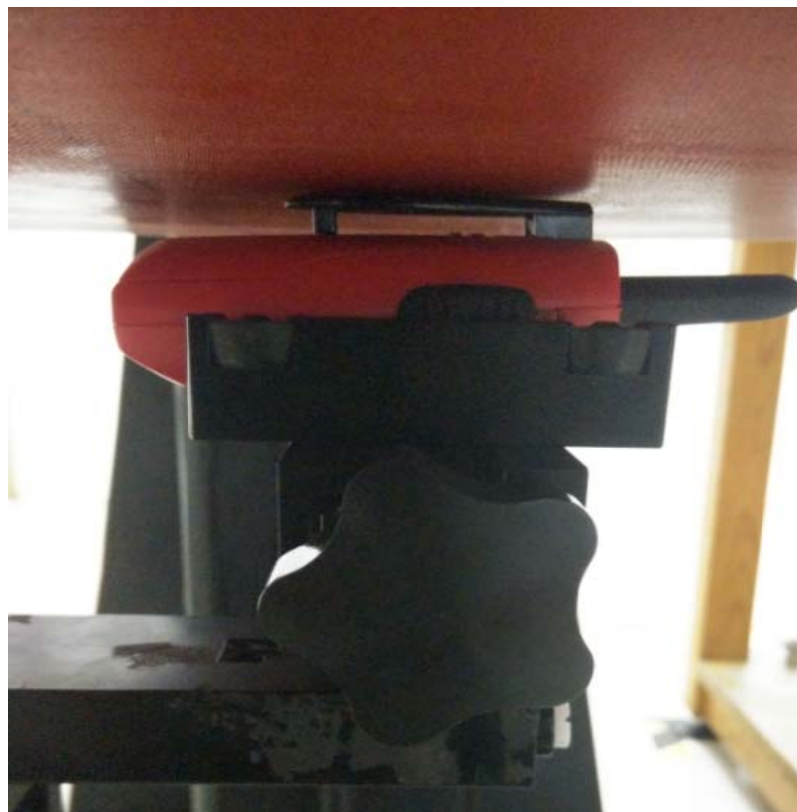
Photograph of the depth in the Head Phantom (450MHz)



Photograph of the depth in the Body Phantom (450MHz)



Face-held, the front of the EUT towards phantom (The distance was 25mm)



Body-worn Configuration with A1, B1, BC1

Antenna Distance (mm)

Antenna Type	Separation Distance (mm)		
	@ Bottom surface of the EUT	@ antenna's base	@ antenna's tip
A1	5.0	10.5	10.0

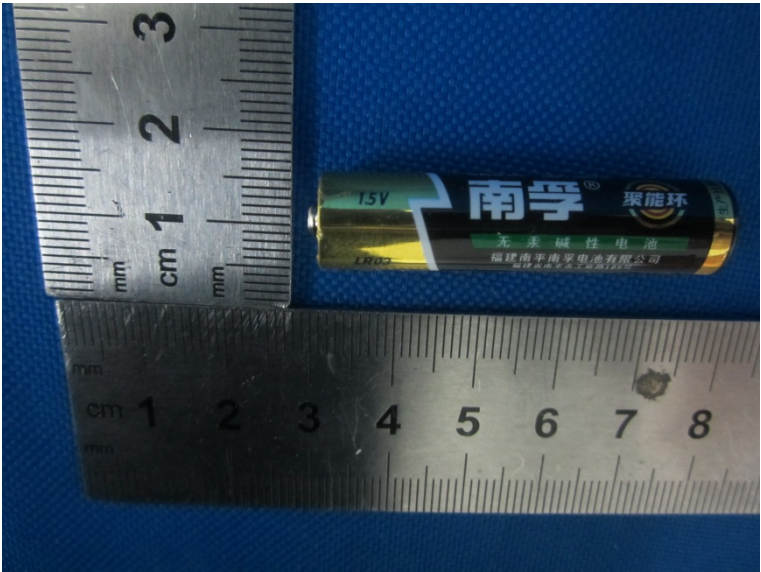
External photo – front side



External photo – rear side



B1 – Battery, Intrinsically Safe Li-ion Battery



BC1- Belt clip

