

# WalabotDIY2

## User manual

FCC ID: 2AHIS-VMAKERPROW  
Contains FCC ID: 2AHIS-VMAKERPROUWB  
IC: 21498-VMAKERPROW  
Contains IC: 21498-VMAKERPROU  
Models: VMPRO19CB4BAT,  
VMPRO19CB4WREP,  
VMPRO19EB4BAT,  
VMPRO19EB4WREP,  
VMPRO19FB4BAT



# What's in the box

- ▶ WalabotDIY2 device
- ▶ Gel Pad
- ▶ USB charging cable

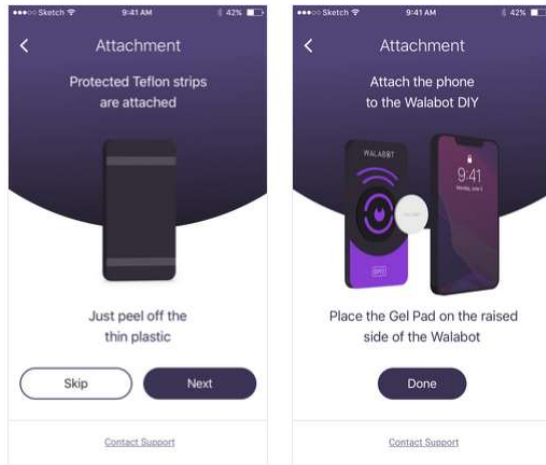
<p><b>Contents</b></p> <ul style="list-style-type: none"> <li>Walabot DIY 2 Device</li> <li>Gel Pad</li> <li>USB Charging Cable</li> </ul> <p><b>Get Started</b></p> <ol style="list-style-type: none"> <li>Download the Walabot DIY app to your phone from the App Store (iPhone users) or Google Play (Android users).</li> <li>Launch the app and follow the in-app instructions to pair your phone and the Walabot DIY 2 using Wi-Fi.</li> </ol> <p>Watch our online tutorial series: <a href="http://walabot.com/diy">walabot.com/diy</a></p> <p>Questions? Visit <a href="http://walabot.com/diy/support@walabot.com">walabot.com/diy/support@walabot.com</a></p>	<p><b>Inhalt</b></p> <ul style="list-style-type: none"> <li>Walabot DIY 2 Gerät</li> <li>Gel-Pad</li> <li>USB-Ladekabel</li> </ul> <p><b>Erste Schritte</b></p> <ol style="list-style-type: none"> <li>Laden Sie sich im App-Store (iPhone-Nutzer) oder im Google Play Store (Android-Nutzer) die Walabot DIY App auf Ihr Handy herunter.</li> <li>Starten Sie die App und folgen Sie den dortigen Anweisungen, um Ihr Handy und Walabot DIY2 mithilfe von WLAN zu verbinden.</li> </ol> <p>Suchen Sie sich unsere Online-Tutorial-Reihe an: <a href="http://walabot.com/diy">walabot.com/diy</a></p> <p>Fragen? Besuchen Sie <a href="http://walabot.com/diy/support@walabot.com">walabot.com/diy/support@walabot.com</a></p>	<p><b>Contenus</b></p> <ul style="list-style-type: none"> <li>Appareil Walabot DIY 2</li> <li>Coussin de Gel</li> <li>Cable USB</li> </ul> <p><b>Commencer</b></p> <ol style="list-style-type: none"> <li>Téléchargez l'application Walabot DIY sur votre téléphone à partir de l'App Store (iPhone) ou de Google Play (Android).</li> <li>Lancez l'application et suivez les instructions pour appairer votre téléphone et le Walabot DIY 2 en utilisant le Wi-Fi.</li> </ol> <p>Regardez notre série de tutoriels en ligne: <a href="http://walabot.com/diy">walabot.com/diy</a></p> <p>Des questions? Visitez <a href="http://walabot.com/diy/support@walabot.com">walabot.com/diy/support@walabot.com</a></p>	<p><b>Contenido</b></p> <ul style="list-style-type: none"> <li>Dispositivo Walabot DIY2</li> <li>Almohadilla de gel</li> <li>Cable de carga USB</li> </ul> <p><b>Comenzar</b></p> <ol style="list-style-type: none"> <li>Descargue la aplicación Walabot DIY en su teléfono desde App Store (usuarios de iPhone) o Google Play (usuarios de Android).</li> <li>Inicie la aplicación y siga las instrucciones para emparejar su teléfono y Walabot DIY 2 a través de Wi-Fi.</li> </ol> <p>Ve nuestra serie de tutoriales en línea: <a href="http://walabot.com/diy">walabot.com/diy</a></p> <p>¿Preguntas? Visite <a href="http://walabot.com/diy/support@walabot.com">walabot.com/diy/support@walabot.com</a></p>	<p><b>Keep Your Walabot DIY 2 Safe</b></p> <p><b>Get the Walabot Accessory Kit</b></p> <p>PACKAGE INCLUDES:          Soft-Touch Protective Case          Gel Pads          Protective Straps</p> <p>Get one at <a href="http://walabot.com/uses">walabot.com/uses</a></p>
<p><b>Contenuti</b></p> <ul style="list-style-type: none"> <li>Dispositivo Walabot DIY 2</li> <li>Cuscinetto in Gel</li> <li>Cavo USB per la ricarica</li> </ul> <p><b>Per iniziare</b></p> <ol style="list-style-type: none"> <li>Scarica l'app Walabot DIY sul tuo telefono dall'App Store (iPhone) o da Google Play (Android).</li> <li>Avvia l'applicazione e segui le istruzioni in-app per collegare il tuo telefono al Walabot DIY 2 utilizzando il Wi-Fi.</li> </ol> <p>Guarda i nostri tutorial online: <a href="http://walabot.com/diy">walabot.com/diy</a></p> <p>Domande? Visita il sito <a href="http://walabot.com/diy/support@walabot.com">walabot.com/diy/support@walabot.com</a></p>	<p><b>Conteúdo</b></p> <ul style="list-style-type: none"> <li>Dispositivo Walabot DIY 2</li> <li>Almofada de Gel</li> <li>Cabo carregador USB</li> </ul> <p><b>Começar</b></p> <ol style="list-style-type: none"> <li>Acesse a App Store (usuários de iPhone) ou Google Play (usuários de Android) em seu telefone e baixe o aplicativo Walabot DIY.</li> <li>inicialize o aplicativo e siga as instruções on-line para pará-lo seu telefone e o Walabot DIY 2 usando o Wi-Fi.</li> </ol> <p>Assista nossa série de tutorial em linha: <a href="http://walabot.com/diy">walabot.com/diy</a></p> <p>Dúvidas? Visite <a href="http://walabot.com/diy/support@walabot.com">walabot.com/diy/support@walabot.com</a></p>	<p><b>内容</b></p> <ul style="list-style-type: none"> <li>Walabot DIY 2 设备</li> <li>凝胶垫</li> <li>USB充电线</li> </ul> <p><b>开始使用</b></p> <ol style="list-style-type: none"> <li>请从 App Store (iPhone 用户) 或 Google Play (Android 用户) 将 Walabot DIY 应用下载到手机上。</li> <li>启动该应用，然后按照应用内提示，使用 Wi-Fi 将手机和 Walabot DIY 2 配对。</li> </ol> <p>观看我们的在线教程系列: <a href="http://walabot.com/diy">walabot.com/diy</a></p> <p>有疑问吗? 请访问 <a href="http://walabot.com/diy/support@walabot.com">walabot.com/diy/support@walabot.com</a></p>	<p><b>同梱品</b></p> <ul style="list-style-type: none"> <li>Walabot DIY 2 デバイス</li> <li>ジェルパッド</li> <li>USB電源ケーブル</li> </ul> <p><b>さあ始めましょう</b></p> <ol style="list-style-type: none"> <li>Walabot DIYアプリをApp Store (iPhoneユーザー)またはGoogle Play (Androidユーザー)からスマートフォンにダウンロードします。</li> <li>アプリを起動し、アプリ内の指示に従って、Wi-Fiを使用してスマートフォンとWalabot DIY 2をペアリングします。</li> </ol> <p>オンラインチュートリアルシリーズをご覧ください: <a href="http://walabot.com/diy">walabot.com/diy</a></p> <p>ご質問? <a href="http://walabot.com/diy">walabot.com/diy</a>にアクセスして<a href="mailto:support@walabot.com">support@walabot.com</a></p>	<p><b>제품 구성</b></p> <ul style="list-style-type: none"> <li>Walabot DIY2 장치</li> <li>젤 패드</li> <li>USB 충전 케이블</li> </ul> <p><b>시작하기</b></p> <ol style="list-style-type: none"> <li>App Store (iPhone 사용자) 또는 Google Play (Android 사용자)에서 Walabot DIY 앱을 다운로드합니다.</li> <li>앱을 실행하고 앱의 지침에 따라 Wi-Fi를 사용하여 휴대폰과 Walabot DIY 2를 페어링합니다.</li> </ol> <p>온라인 튜토리얼 시리즈를 보십시오: <a href="http://walabot.com/diy">walabot.com/diy</a></p> <p>궁금한 점이 있으신가요? <a href="http://walabot.com/diy">walabot.com/diy</a> 사이트의 <a href="mailto:support@walabot.com">support@walabot.com</a>에 문의하십시오.</p>

# Tutorial

## Step 1

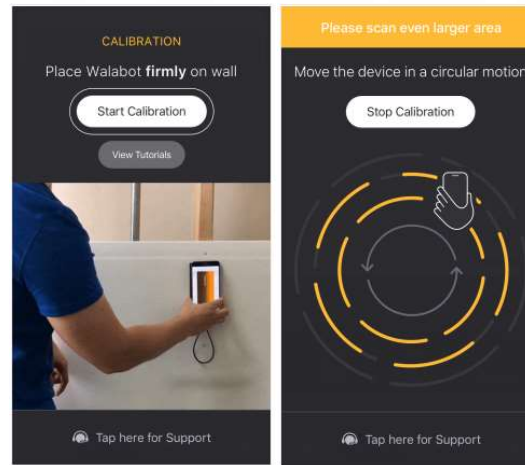
Download WalabotDIY app from Google Play (Android users) or from AppStore (iOS users)

Follow the app guidance to learn how to attach the phone to the Walabot, and how to scan your wall properly



## Step 2

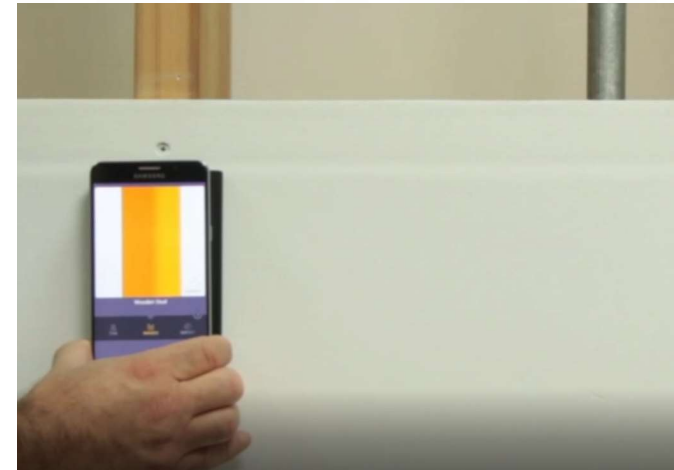
Choose desired wall type as instructed, place Walabot DIY firmly on wall, where the Teflon strips are against the wall, then tap "Start Calibration" and move it in a circular motion



## Step 3

Choose Images mode and start scanning your wall. When you hit an object, a visualization of it will appear on your screen.

For more information, please visit [walabot.com/diy](http://walabot.com/diy)



## Warning

### FCC Regulation

#### FCC Interference Statement (Part 15.105 (b))

This equipment has been tested and found to comply with the limits for a Class B digital device, pursuant to Part 15 of the FCC Rules. These limits are designed to provide reasonable protection against harmful interference in a residential installation. This equipment generates uses and can radiate radio frequency energy and, if not installed and used in accordance with the instructions, may cause harmful interference to radio communications. However, there is no guarantee that interference will not occur in a particular installation. If this equipment does cause harmful interference to radio or television reception, which can be determined by turning the equipment off and on, the user is encouraged to try to correct the interference by one of the following measures: Reorient or relocate the receiving antenna. Increase the separation between the equipment and receiver. Connect the equipment into an outlet on a circuit different from that to which the receiver is connected. Consult the dealer or an experienced radio/TV technician for help.

#### FCC Part 15 Clause 15.21

“Changes or modifications not expressly approved by the party responsible for compliance could void the user’s authority to operate the equipment”

#### FCC Part 15.19(a) [interference compliance statement

“This device complies with part 15 of the FCC Rules. Operation is subject to the following two conditions: (1) This device may not cause harmful interference, and (2) this device must accept any interference received, including interference that may cause undesired operation.”

“This device contains licence-exempt transmitter(s)/receiver(s) that comply with Innovation, Science and Economic Development Canada’s licence-exempt RSS(s). Operation is subject to the following two conditions: This device may not cause interference. This device must accept any interference, including interference that may cause undesired operation of the device.”

“L’émetteur/récepteur exempt de licence contenu dans le présent appareil est conforme aux CNR d’Innovation, Sciences et Développement économique Canada applicables aux appareils radio exempts de licence. L’exploitation est autorisée aux deux conditions suivantes : L’appareil ne doit pas produire de brouillage;L’appareil doit accepter tout brouillage radioélectrique subi, même si le brouillage est susceptible d’en compromettre le fonctionnement.”

#### ISED Canada ICES-003 Compliance Label

“CAN ICES-3 (B)/NMB-3(B)”

## Labels

FCC and IC certifications can be found inside the App. Go to Menu→Regulation →Certifications