

WalabotDIY2 User manual

FCC ID: 2AHIS-VMAKERPROW
Contains FCC ID: 2AHIS-VMAKERPROUWB
IC: 21498-VMAKERPROW
Contains IC: 21498-VMAKERPROU
Models: VMPRO19CB4BAT,
VMPRO19CB4WREP,
VMPRO19EB4BAT,
VMPRO19EB4WREP



What's in the box

- ▶ WalabotDIY2 device
- ▶ Gel Pad
- ▶ USB charging cable

Contents

- Walabot DIY 2 Device
- Gel Pad
Please recharge the Walabot DIY 2 (on the island circle) and your phone to hold the device together.
- USB Charging Cable
Use to recharge the Walabot DIY 2's internal battery.

Get Started

- Download the Walabot DIY app to your phone from the App Store (iPhone users) or Google Play (Android users).
- Launch the app and follow the in-app instructions to pair your phone and the Walabot DIY 2 using Wi-Fi.

Watch our online tutorial series: [Visit walabot.com/diy](http://www.walabot.com/diy)

Questions? [Visit walabot.com/diy/support@walabot.com](http://www.walabot.com/diy/support@walabot.com)

Use of Walabot technology in particular environments may be subject to local regulations. The terms and conditions, including the limited warranty, are detailed in the Terms and Conditions at walabot.com.

Inhalt

- Walabot DIY 2 Gerät
- Gel-Pad
Bitte laden Sie das Pad zwischen Walabot DIY 2 und dem enthaltenen Handy und Ihrem Handy an, um beide Geräte zusammenzusetzen.
- USB-Ladekabel
Zur Aufladung der internen Batterie des Walabot DIY 2.

Erste Schritte

- Laden Sie sich im App-Store (iPhone-Nutzer) oder im Google Play Store (Android-Nutzer) die Walabot DIY App auf Ihr Handy herunter.
- Starten Sie die App und folgen Sie den dortigen Anweisungen, um Ihr Handy und Walabot DIY 2 mithilfe von WLAN zu verbinden.

Sehen Sie sich unsere Online-Tutorial-Reihe an: www.walabot.com/diy

Fragen? [Besuchen Sie walabot.com/diy/support@walabot.com](http://www.walabot.com/diy/support@walabot.com)

Die Verwendung von Walabot-Technologie in bestimmten Umgebungen kann unter bestimmten Vorschriften unterliegen. Die Geschäftsbedingungen, einschließlich der beschränkten Garantie, sind in den Geschäftsbedingungen auf walabot.com detailliert aufgeführt.

Contenus

- Appareil Walabot DIY 2
- Coussin de Gel
Placez le coussin entre le Walabot DIY 2 (sur le cercle en îlot) et votre téléphone pour maintenir ensemble les deux appareils.
- Cable USB
À utiliser pour recharger la batterie interne du Walabot DIY 2.

Commencer

- Téléchargez l'application Walabot DIY sur votre téléphone à partir de App Store (iPhone) ou de Google Play (Android).
- Lancez l'application et suivez les instructions pour appairer votre téléphone et le Walabot DIY 2 en utilisant le Wi-Fi.

Regardez notre série de tutoriels en ligne : www.walabot.com/diy

Des questions? [Visitez walabot.com/diy/support@walabot.com](http://www.walabot.com/diy/support@walabot.com)

L'utilisation de la technologie Walabot dans certains environnements peut être soumise à des réglementations locales. Les conditions d'utilisation, y compris la garantie limitée, sont détaillées dans les Termes et conditions sur walabot.com.

Contenido

- Dispositivo Walabot DIY2
- Almohadilla de gel
Colóquela entre el Walabot DIY 2 (en el círculo aislado) y su teléfono para mantener los dispositivos acoplados.
- Cable de carga USB
Utilízalo para recargar la batería interna del Walabot DIY 2.

Comenzar

- Descargue la aplicación Walabot DIY en su teléfono desde App Store (usuarios de iPhone) o Google Play (usuarios de Android).
- Inicio la aplicación y siga las instrucciones para emparejar su teléfono y Walabot DIY 2 a través de Wi-Fi.

Vea nuestra serie de tutoriales en línea: www.walabot.com/diy

¿Preguntas? [Visite walabot.com/diy/support@walabot.com](http://www.walabot.com/diy/support@walabot.com)

El uso de la tecnología Walabot en determinados entornos puede estar sujeto a las regulaciones locales. Las condiciones, incluida la garantía limitada, se detallan en la sección de condiciones de walabot.com.

Keep Your Walabot DIY 2 Safe



Get the Walabot Accessory Kit

PACKAGE INCLUDES:
Eco-Hand Protective Case
Gel Pads
Protective Strips

Get one at [walabot.com/cases](http://www.walabot.com/cases)

No magnets included.

Contenuti

- Dispositivo Walabot DIY 2
- Cuscinetto in Gel
Posizionalo tra il Walabot DIY 2 (sul cerchio isolato) e il tuo telefono per tenere uniti i dispositivi.
- Cavo USB per la ricarica
Usalo per ricaricare la batteria del Walabot DIY 2.

Per iniziare

- Scarica l'app Walabot DIY sul tuo telefono dall'App Store (iPhone) o da Google Play (Android).
- Avvia l'applicazione e segui le istruzioni in-app per collegare il tuo telefono al Walabot DIY 2 utilizzando il Wi-Fi.

Guarda i nostri tutorial online: www.walabot.com/diy

Domande? [Visita il sito walabot.com/diy/support@walabot.com](http://www.walabot.com/diy/support@walabot.com)

L'uso della tecnologia Walabot in alcuni ambienti potrebbe essere soggetto a norme locali. I termini e le condizioni, inclusa la garanzia limitata, sono descritti in dettaglio in "Termini e Condizioni" sul sito walabot.com.

Conteúdo

- Dispositivo Walabot DIY 2
- Almofada de Gel
Posicione a almofada entre o Walabot DIY 2 (no círculo isolado) e seu telefone para manter os dispositivos juntos.
- Cabo carregador USB
Use-o para recarregar a bateria interna do Walabot DIY 2.

Começar

- Acesse a App Store (usuários de iPhone) ou Google Play (usuários de Android) em seu telefone e baixe o aplicativo Walabot DIY.
- Inicialize o aplicativo e siga as instruções contidas nele para parear seu telefone e o Walabot DIY 2 usando a Wi-Fi.

Assista nossa série de tutorial on-line: www.walabot.com/diy

Dúvidas? [Visite walabot.com/diy/support@walabot.com](http://www.walabot.com/diy/support@walabot.com)

O uso da tecnologia Walabot em ambientes específicos pode estar sujeito às regulamentações locais. Os termos e condições, incluindo a garantia limitada, são descritos nos Termos e Condições em walabot.com.

内容

- Walabot DIY 2 设备
- 凝胶垫
将凝胶垫置于 Walabot DIY 2 (在岛状圆圈上) 和手机之间，以保持两个设备合为一体。
- USB 充电线
用于为 Walabot DIY 2 的内部电池充电。

开始使用

- 请从 App Store (iPhone 用户) 或 Google Play (Android 用户) 将 Walabot DIY 应用下载到手机上。
- 启动该应用，然后按照应用内提示说明，使用 Wi-Fi 将手机和 Walabot DIY 2 配对。

请观看我们的视频教程系列：www.walabot.com/diy

有疑问吗？[请访问 walabot.com/diy/support@walabot.com](http://www.walabot.com/diy/support@walabot.com)

在特定环境下使用 Walabot 技术时，可能受当地法规或特定法规约束。包括有限保修在内的使用条款和条件，可在 walabot.com 上的“Terms and Conditions”中查看。

同梱品

- Walabot DIY 2 デバイス
- ジェルパッド
Walabot DIY 2 (島状の円の上) とスマートフォンを接続するために、デバイス間の隙間に使用します。
- USB 電源ケーブル
Walabot DIY 2 の内部電池を充電に使用します。

さあ始めましょう

- Walabot DIY アプリを App Store (iPhone ユーザー) または Google Play (Android ユーザー) からスマートフォンにダウンロードします。
- アプリを起動し、アプリ内の指示に従って、Wi-Fi を使用してスマートフォンと Walabot DIY 2 をペアリングします。

オンラインチュートリアルシリーズをご覧ください。www.walabot.com/diy

ご質問？ [walabot.com/diy にアクセスしてください support@walabot.com](http://www.walabot.com/diy/support@walabot.com)

特定の環境で Walabot 製品を使用する際、ご利用地の法規制や特定の法規制に適用される場合があります。包括限定的保証を含む利用規約は、walabot.com 上の「Terms and Conditions」をご覧ください。

제품 구성

- Walabot DIY2 장치
- 젤 패드
Walabot DIY 2 (이 섬 모양의 원 위에) 휴대폰과 함께 놓아 장치를 연결합니다.
- USB 충전 케이블
Walabot DIY 2 의 내부 배터리를 충전하기 위해 사용됩니다.

시작하기

- App Store (iPhone 사용자) 또는 Google Play (Android 사용자)에서 Walabot DIY 앱을 다운로드합니다.
- 앱을 실행하고 앱의 설명에 따라 Wi-Fi를 사용하여 휴대폰과 Walabot DIY 2를 페어링합니다.

온라인 튜토리얼 시리즈를 보십시오.www.walabot.com/diy

궁금한 점이 있으신가요? [walabot.com/diy 사이트로 방문해 주세요 support@walabot.com](http://www.walabot.com/diy/support@walabot.com)에 문의하세요

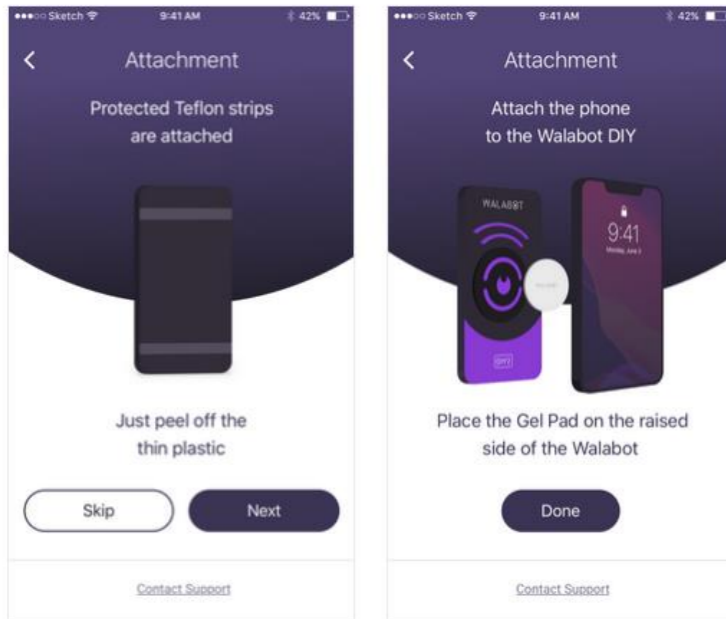
일부 지역에서는 Walabot 기술 사용이 현지 사법의 적용과 특정 법규를 준수할 수 있습니다. Walabot.com 사용 약관 페이지에서 제한된 보증 포함을 포함한 자세한 사용 약관 및 용어를 확인할 수 있습니다.

Tutorial

Step 1

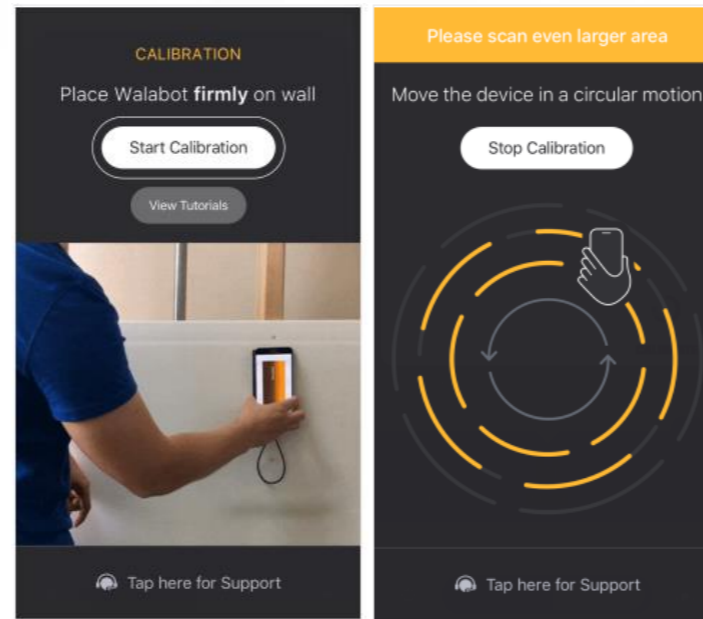
Download WalabotDIY app from Google Play (Android users) or from AppStore (iOS users)

Follow the app guidance to learn how to attach the phone to the Walabot, and how to scan your wall properly



Step 2

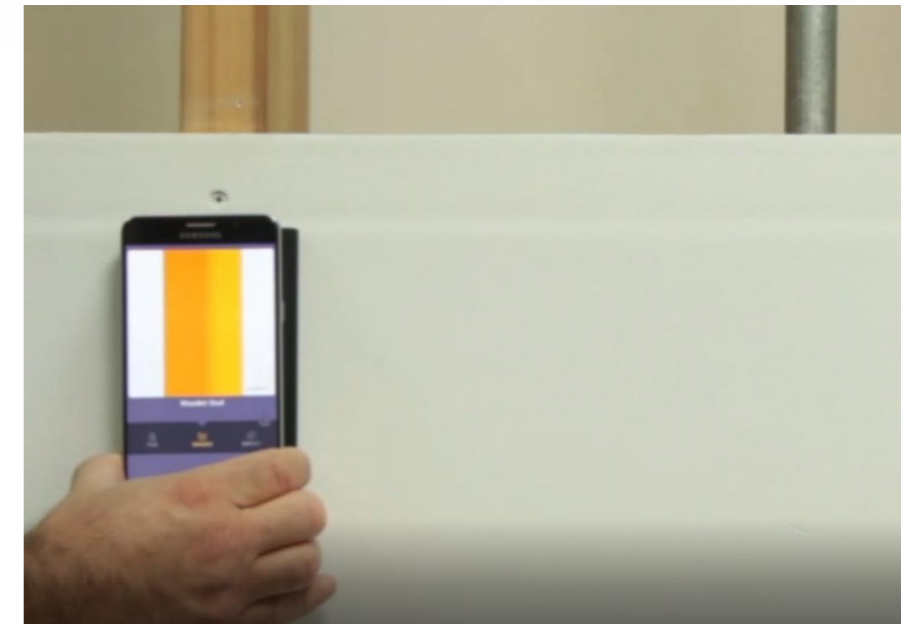
Choose desired wall type as instructed, place Walabot DIY firmly on wall, where the Teflon strips are against the wall, then tap "Start Calibration" and move it in a circular motion



Step 3

Choose Images mode and start scanning your wall. When you hit an object, a visualization of it will appear on your screen.

For more information, please visit walabot.com/diy



Warning

FCC Regulation

FCC Interference Statement (Part 15.105 (b))

This equipment has been tested and found to comply with the limits for a Class B digital device, pursuant to Part 15 of the FCC Rules. These limits are designed to provide reasonable protection against harmful interference in a residential installation. This equipment generates uses and can radiate radio frequency energy and, if not installed and used in accordance with the instructions, may cause harmful interference to radio communications. However, there is no guarantee that interference will not occur in a particular installation. If this equipment does cause harmful interference to radio or television reception, which can be determined by turning the equipment off and on, the user is encouraged to try to correct the interference by one of the following measures: Reorient or relocate the receiving antenna. Increase the separation between the equipment and receiver. Connect the equipment into an outlet on a circuit different from that to which the receiver is connected. Consult the dealer or an experienced radio/TV technician for help.

FCC Part 15 Clause 15.21

“Changes or modifications not expressly approved by the party responsible for compliance could void the user's authority to operate the equipment”

FCC Part 15.19(a) [interference compliance statement

“This device complies with part 15 of the FCC Rules. Operation is subject to the following two conditions: (1) This device may not cause harmful interference, and (2) this device must accept any interference received, including interference that may cause undesired operation.”

“This device contains licence-exempt transmitter(s)/receiver(s) that comply with Innovation, Science and Economic Development Canada’s licence-exempt RSS(s). Operation is subject to the following two conditions: This device may not cause interference. This device must accept any interference, including interference that may cause undesired operation of the device.”

“L’émetteur/récepteur exempt de licence contenu dans le présent appareil est conforme aux CNR d’Innovation, Sciences et Développement économique Canada applicables aux appareils radio exempts de licence. L’exploitation est autorisée aux deux conditions suivantes : L’appareil ne doit pas produire de brouillage;L’appareil doit accepter tout brouillage radioélectrique subi, même si le brouillage est susceptible d’en compromettre le fonctionnement.”

ISED Canada ICES-003 Compliance Label

“CAN ICES-3 (B)/NMB-3(B)”

Labels

FCC and IC certifications can be found inside the App. Go to Menu→Regulation →Certifications