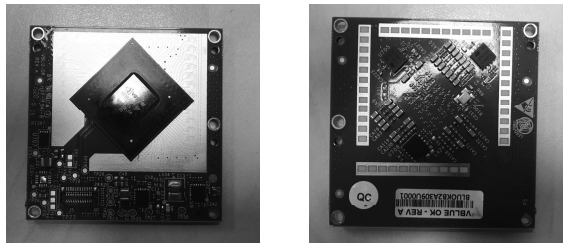


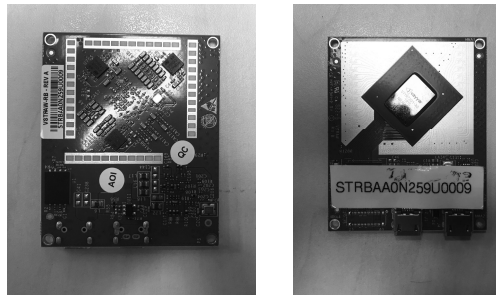
Models Difference Letter

The V60G-HOME family will include, but not restricted to, the following members, having the same RF components, antennas type and array, RF layout and stack-up and same transmissions profile within 57-71GHz - differ only by their DC and digital interfaces:

1. **vBLU_OK_CTPB2, vBLU_MW_CTPB2** - SPI interface, 30-pin DC\digital connector (2 types)



2. **vStraw_CTPB2** - USB + SPI interface and connector



Summary of the differences between the models:

	vStraw CTPB2	vBlu-MW CTPB2	vBlu-OK CTPB2
Interface	USB through CYUSB2014	SPI	SPI
Voltage supply	5V for RF and I/O	5V for RF & Digital, 3.3V for external I/O	5V for RF & Digital, 3.3V for external I/O
Connector	uUSB	OK-06F030-04	2BBDVM-F-30pin